

APPROX. WEIGHT
(LBS)
232

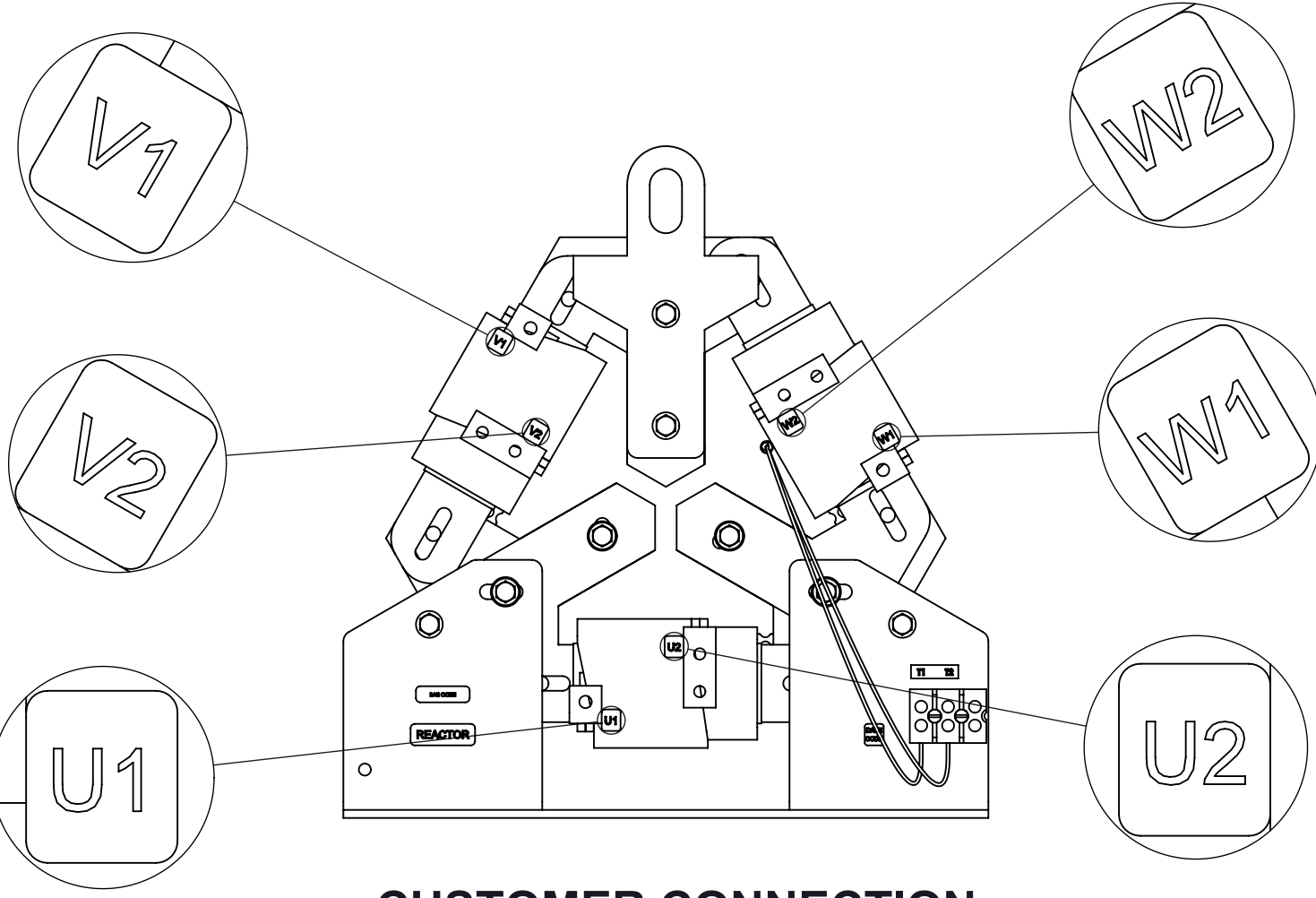
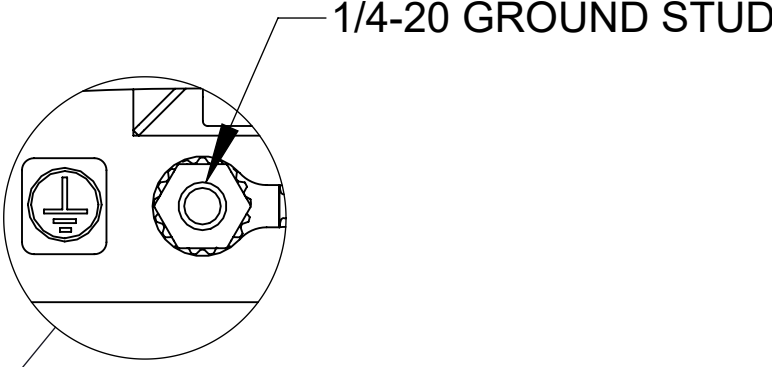
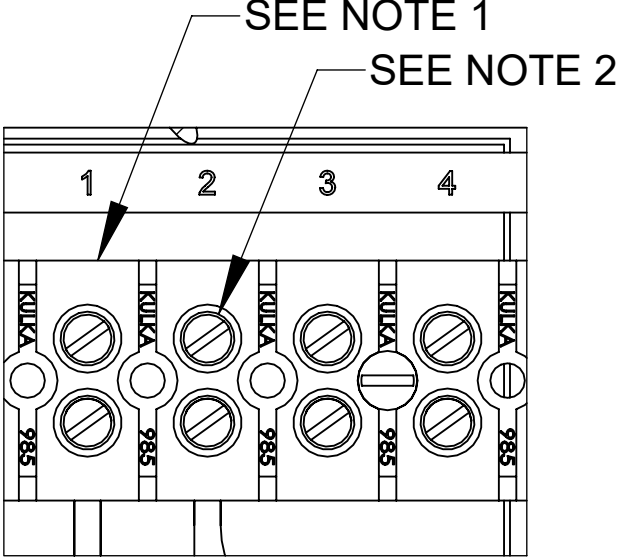
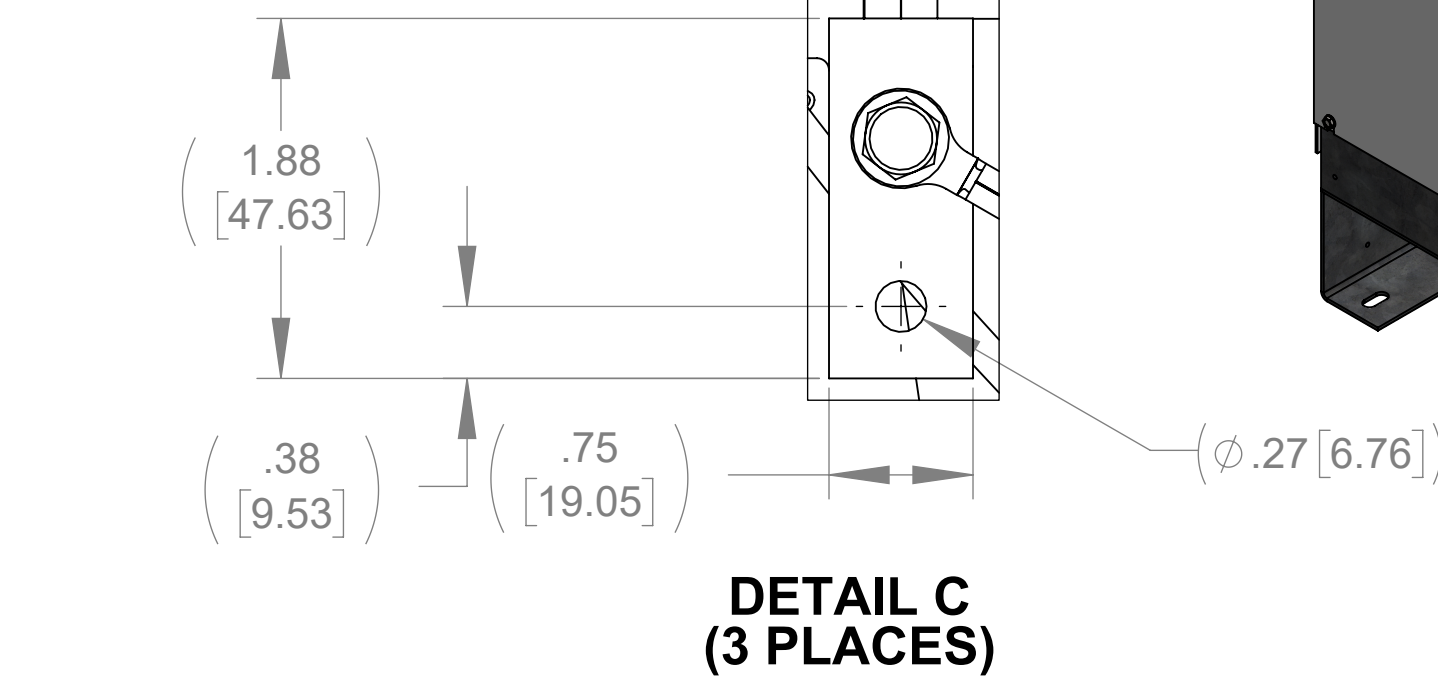
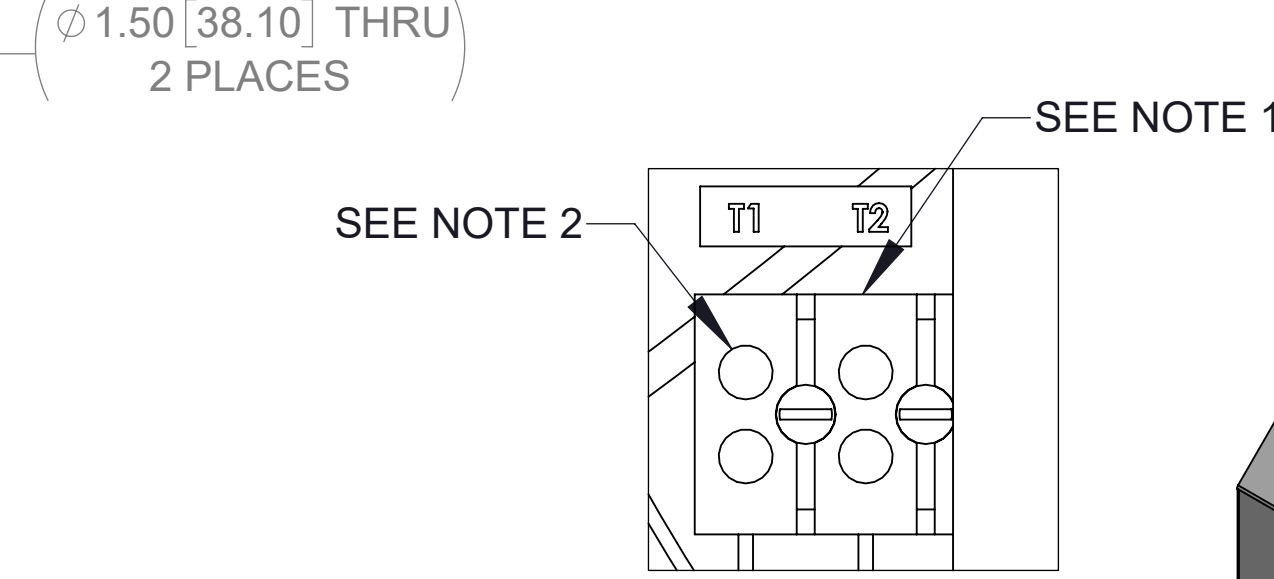
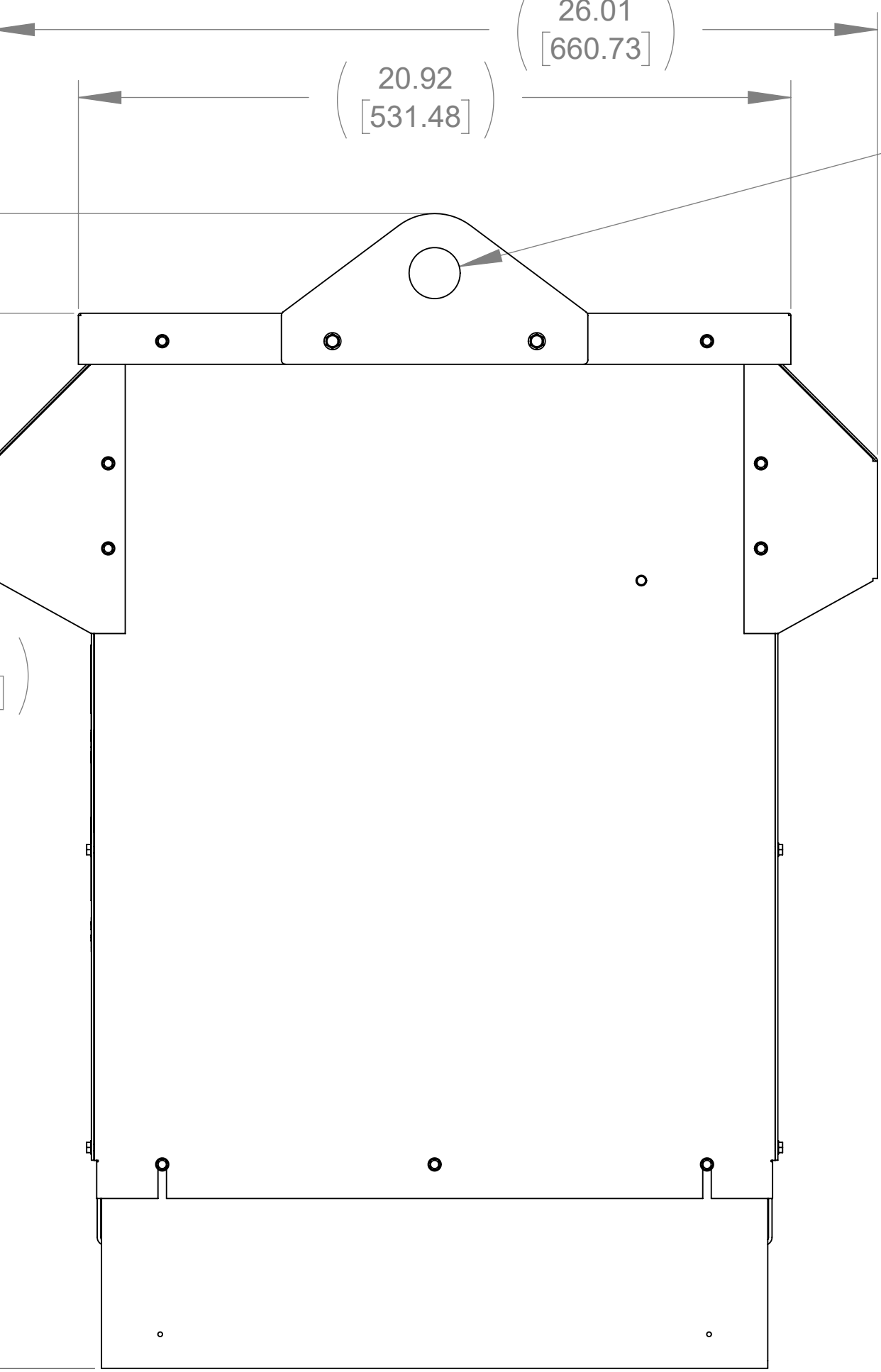
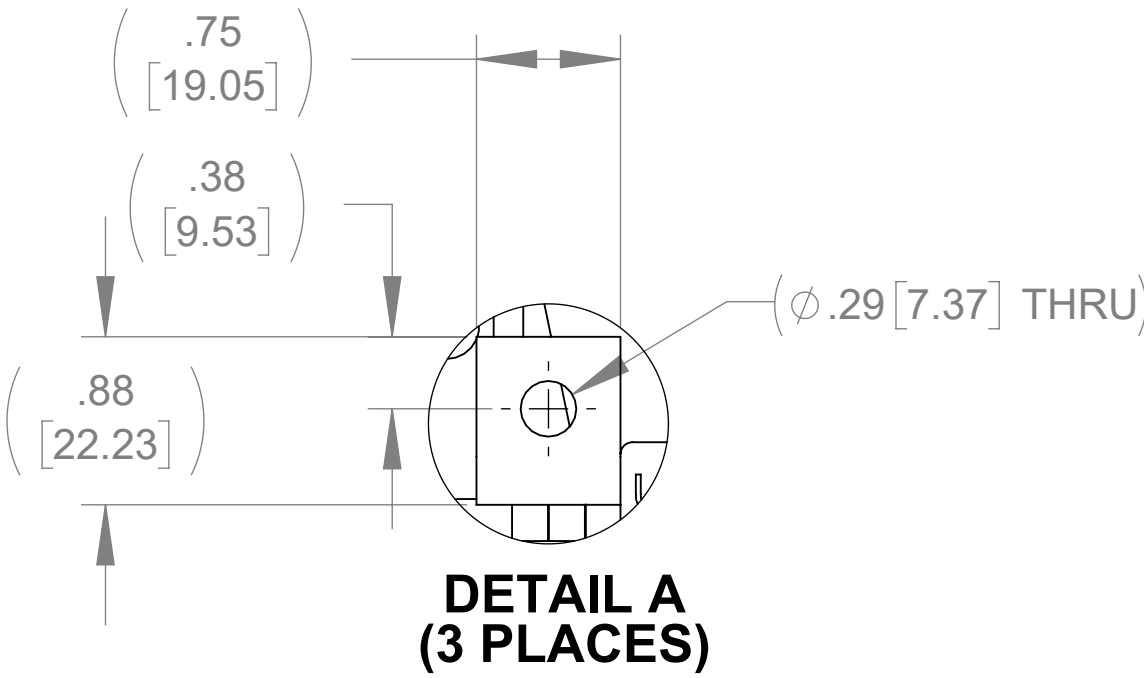
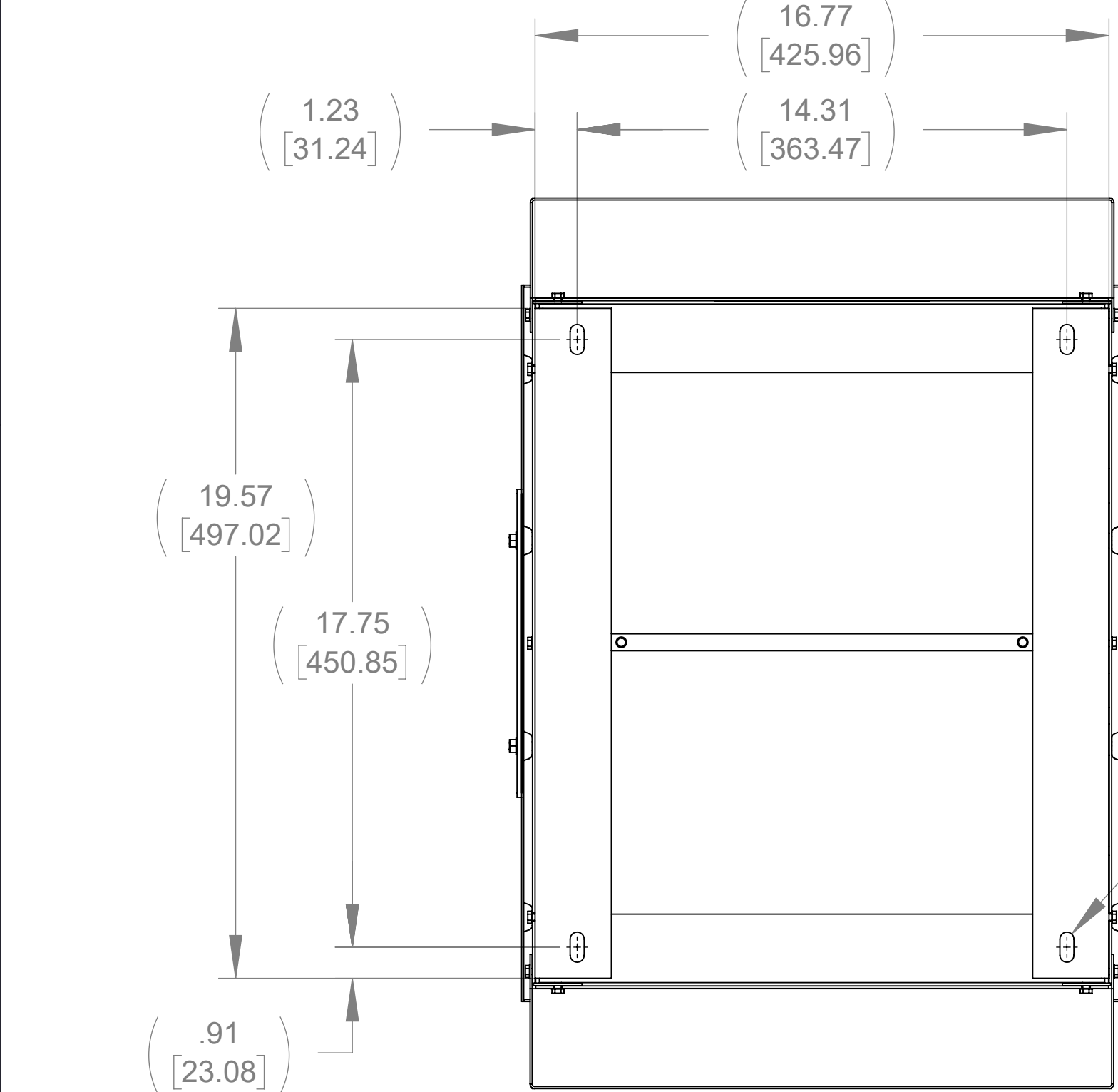
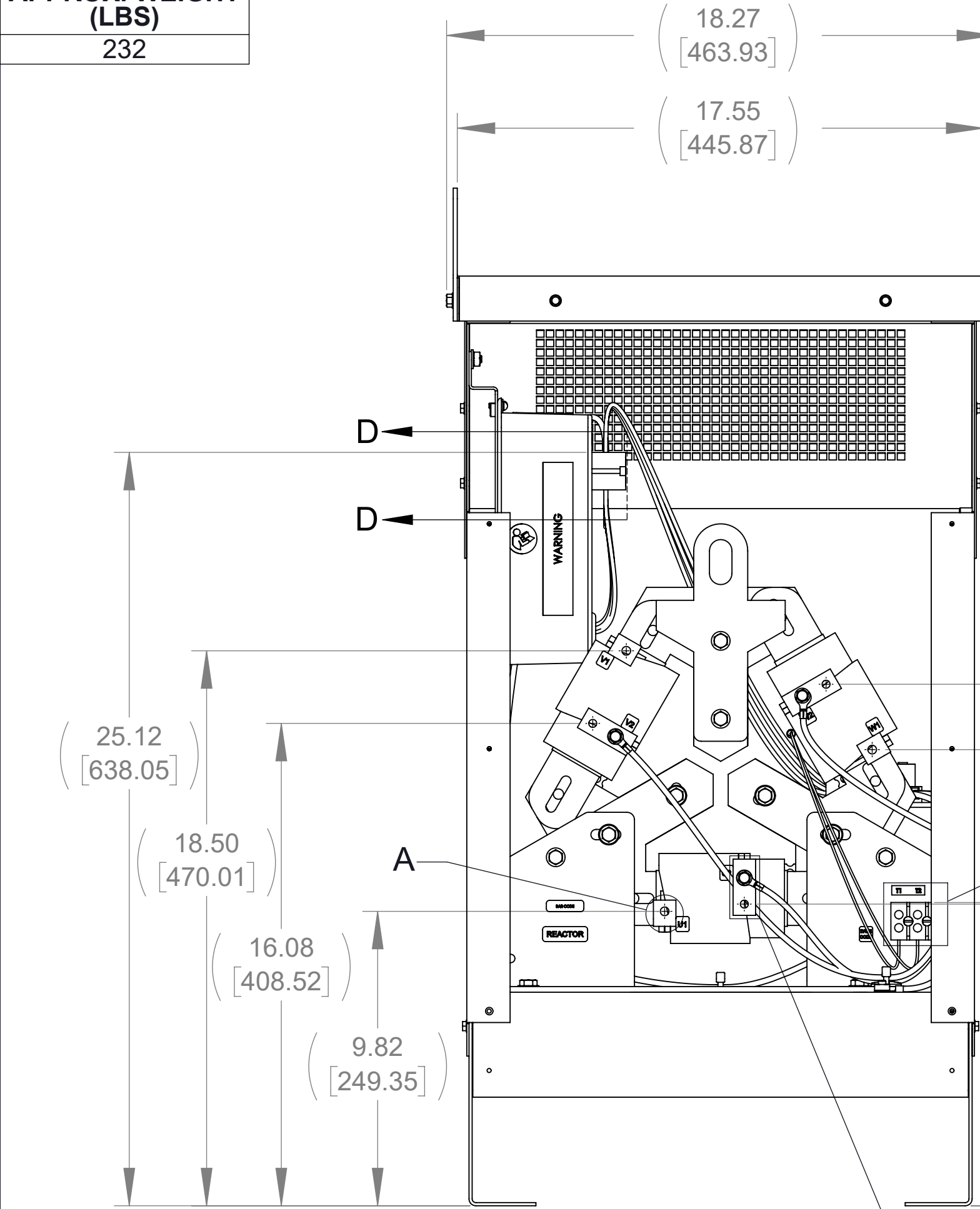
ECO No	DESCRIPTION	REV BY	DATE
M12075	CHANGE TO CAB-17, REPLACE CMP W/CMB, REPLACE CAPPANEL W/CAP	MN	11/07/19

D

C

B

A



- NOTES:**
1. TERMINAL WIRE RANGE: 4-18 AWG.
 2. TERMINAL SCREW TIGHTENING TORQUE: 16 IN/LBS.
 3. REFER TO USER MANUAL FOR COMPLETE INSTALLATION INSTRUCTIONS

THE COMPONENT, PART OR ASSEMBLY DESCRIBED IN THIS DOCUMENT MUST COMPLY WITH THE EU (EUROPEAN UNION) DIRECTIVE RoHS2		MATERIAL		CONFIDENTIAL AND PROPRIETARY INFORMATION THIS DOCUMENT CONTAINS CONFIDENTIAL AND PROPRIETARY INFORMATION OF MTE CORPORATION AND MAY NOT BE USED, COPIED OR DISCLOSED TO OTHERS EXCEPT WITH THE AUTHORIZED WRITTEN PERMISSION OF MTE CORPORATION	
CONTAINS <0.1% OF ANY SVHC BY WEIGHT PER REACH REGULATION				DESCRIPTION	
UNLESS OTHERWISE SPECIFIED DIMENSIONS ARE IN INCHES [MM] TOLERANCES ARE: ANGLES: ± 1 ° 1 PLACE .X: ± .1 [2.5] 2 PLACE .XX: ± .03 [0.76] 3 PLACE .XXX: ± .010 [0.254]		MTE POWER QUALITY. SOLVED. N83 W13330 Leon Road Menomonee Falls, WI 53051 USA 800.455.4683 262.253.8200		SINEWAVE NEXUS FILTER 110A 480V 60Hz NEMA 3R ENCL	
DRAWN MN		DATE 04/10/19		SIZE D	
CHECKED MN		DATE 11/07/19		DWG No. CD SWNW0110D	
APPROVED RH		DATE 11/14/19		REV 01	
SCALE 1:4				SHEET 1 OF 1	

D

C

B

A