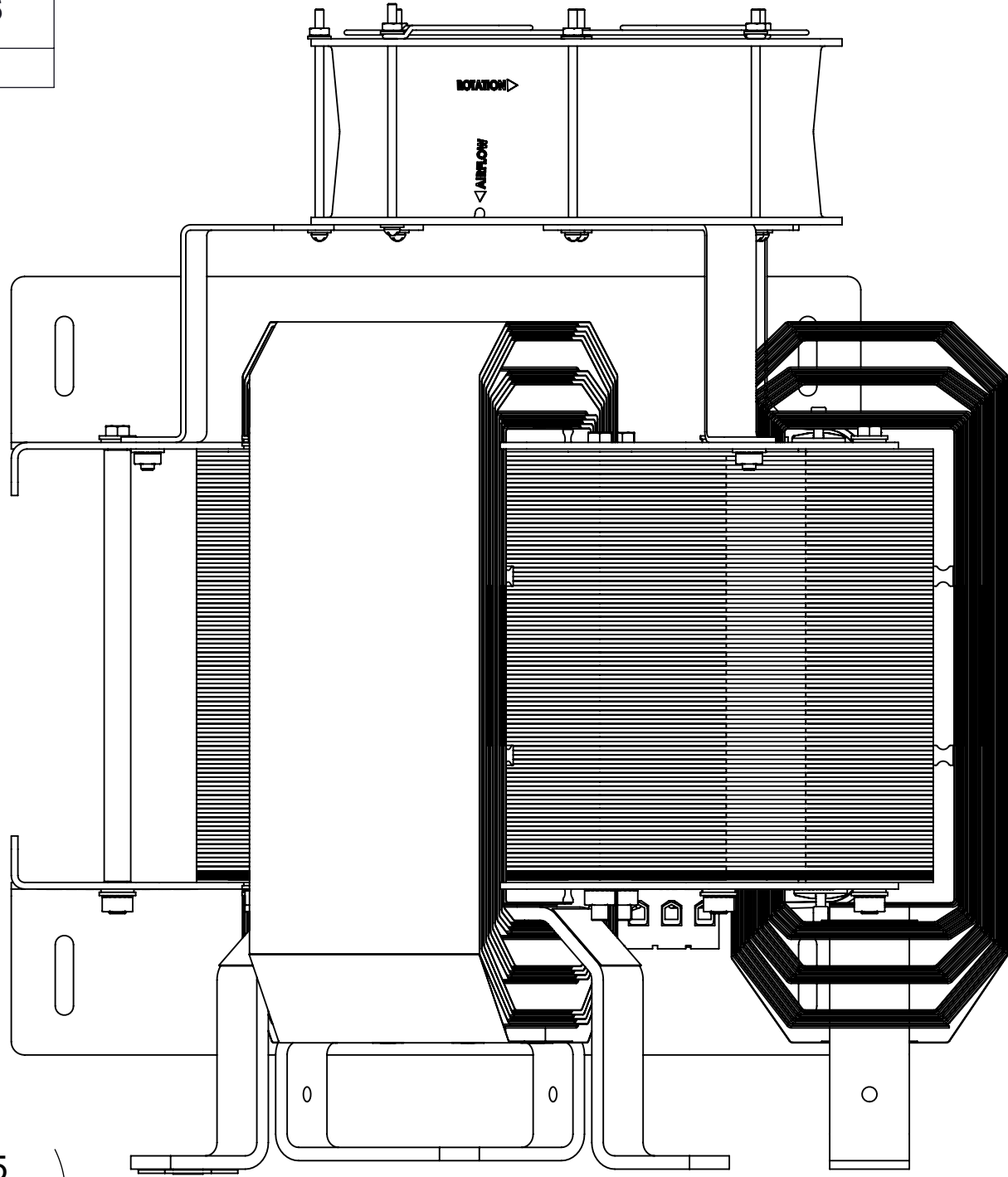
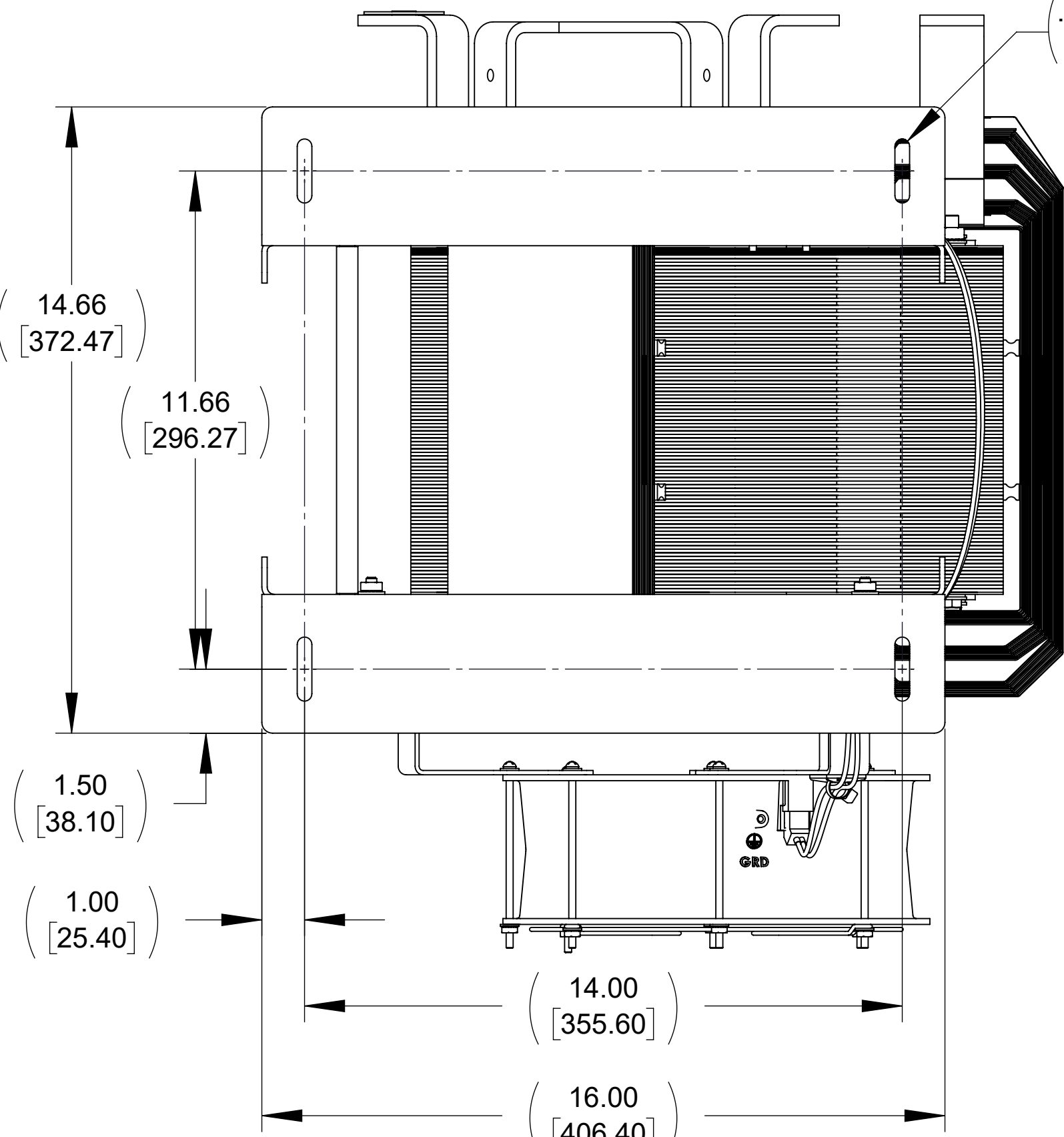


APPROX. WEIGHT (LBS)	WATTS LOSS
443	1144

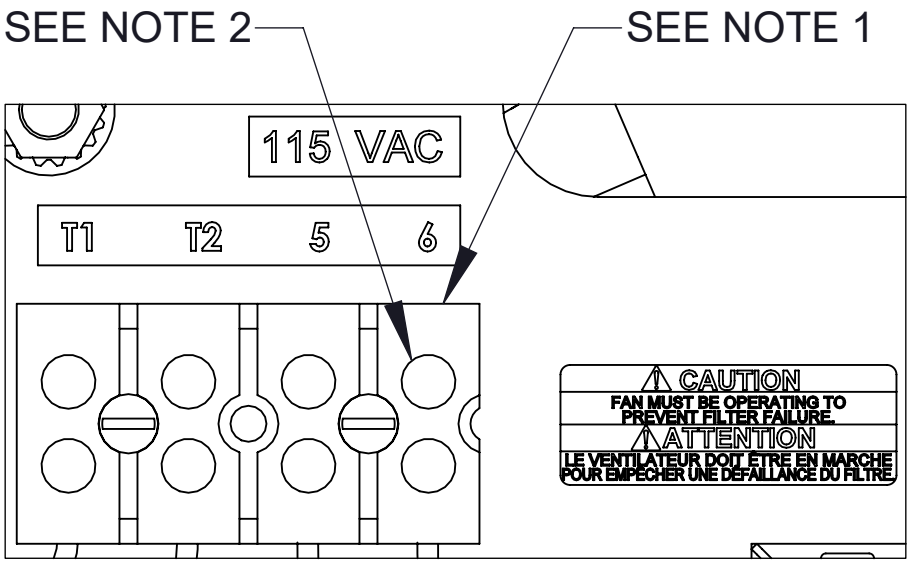
ECO No	DESCRIPTION	REV BY	DATE
M14998	ADDED WATTS LOSS, UPDATED DESCRIPTION		



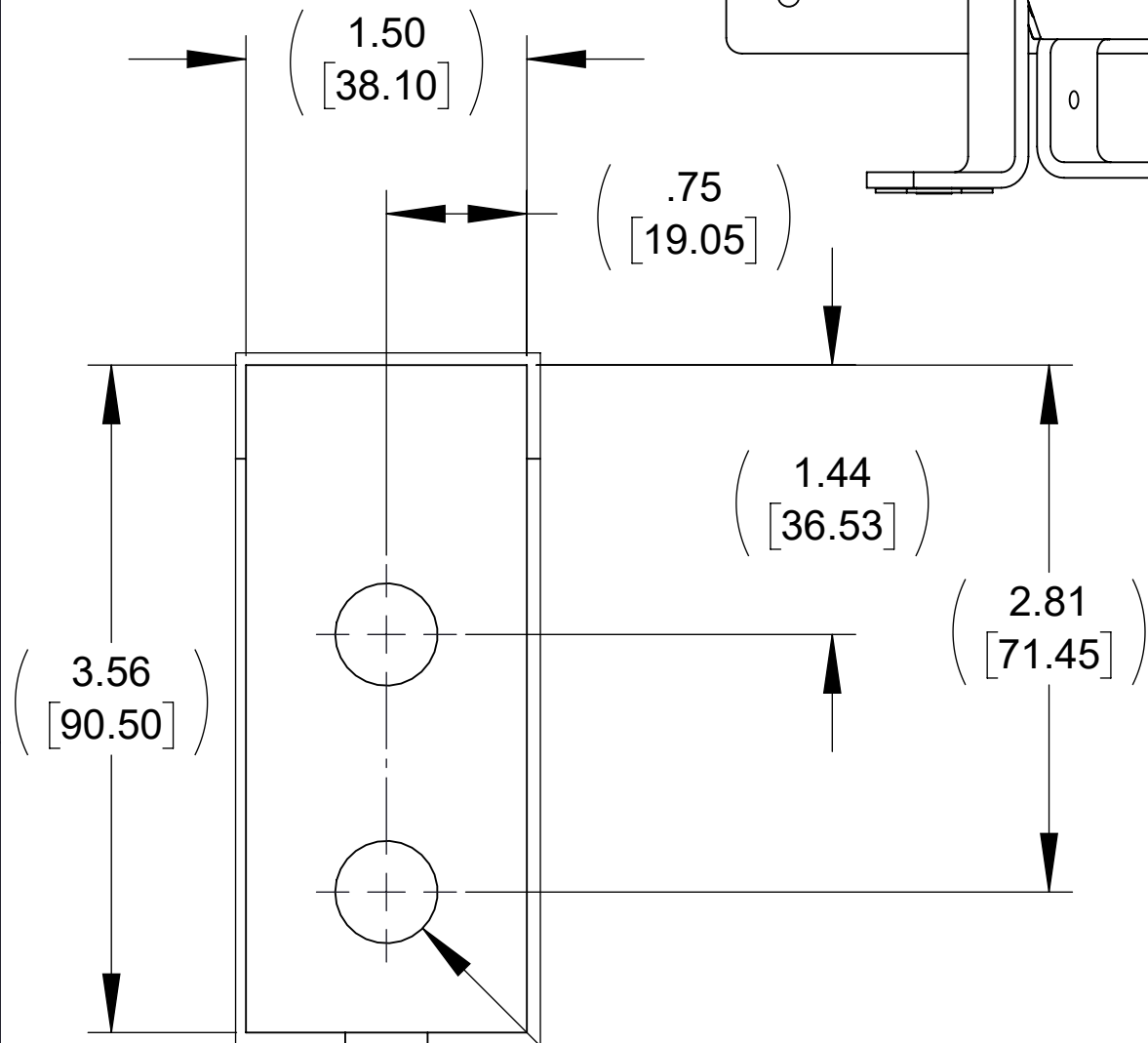
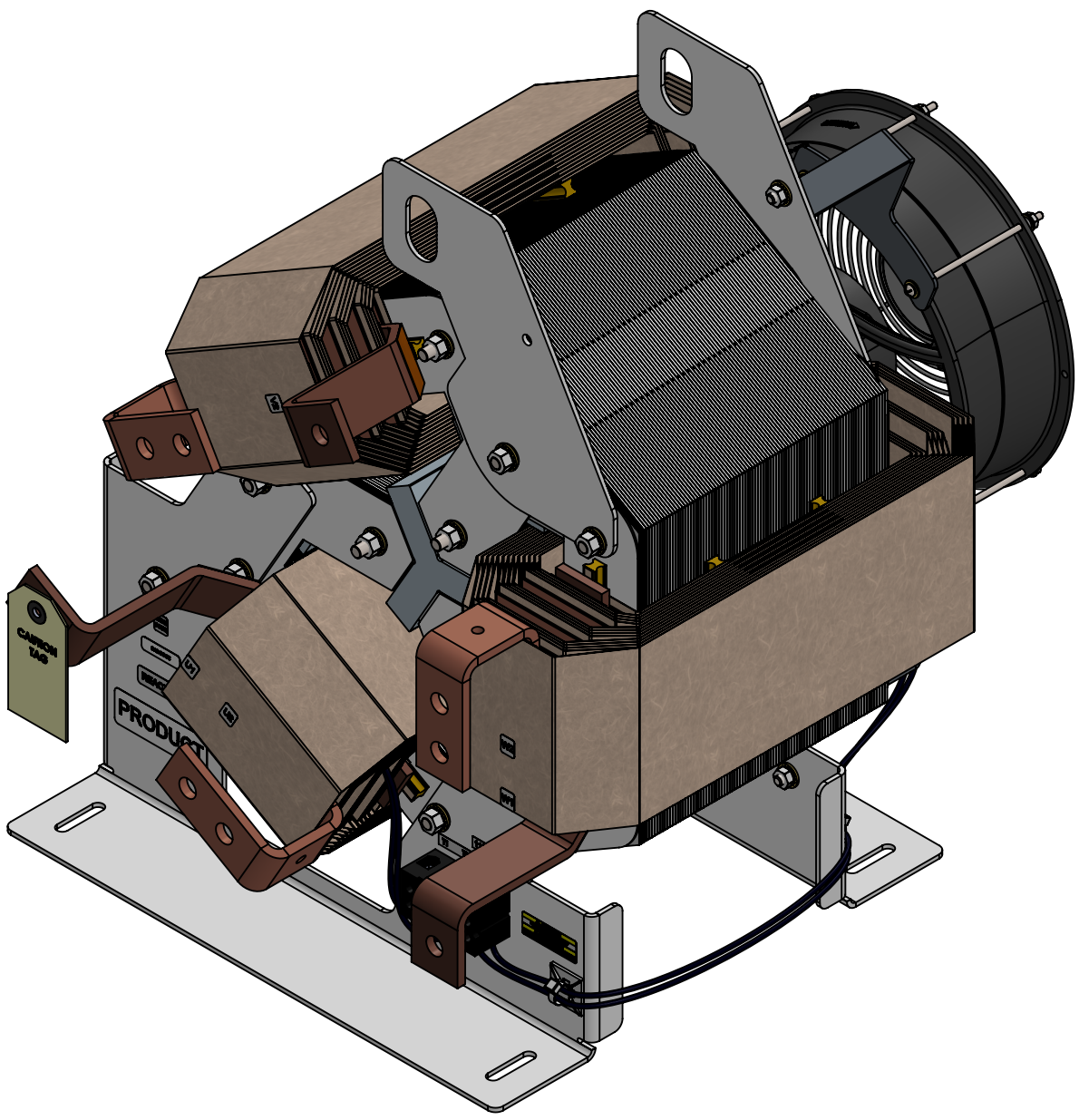
TOP VIEW



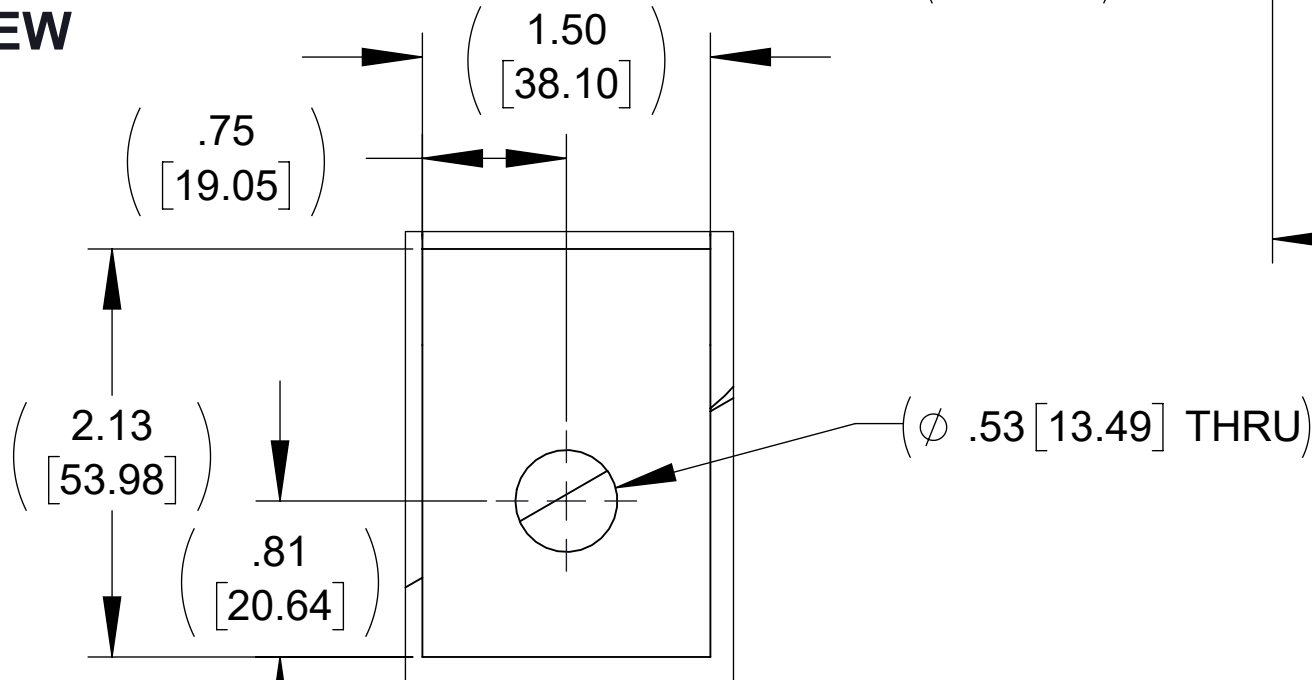
BOTTOM VIEW



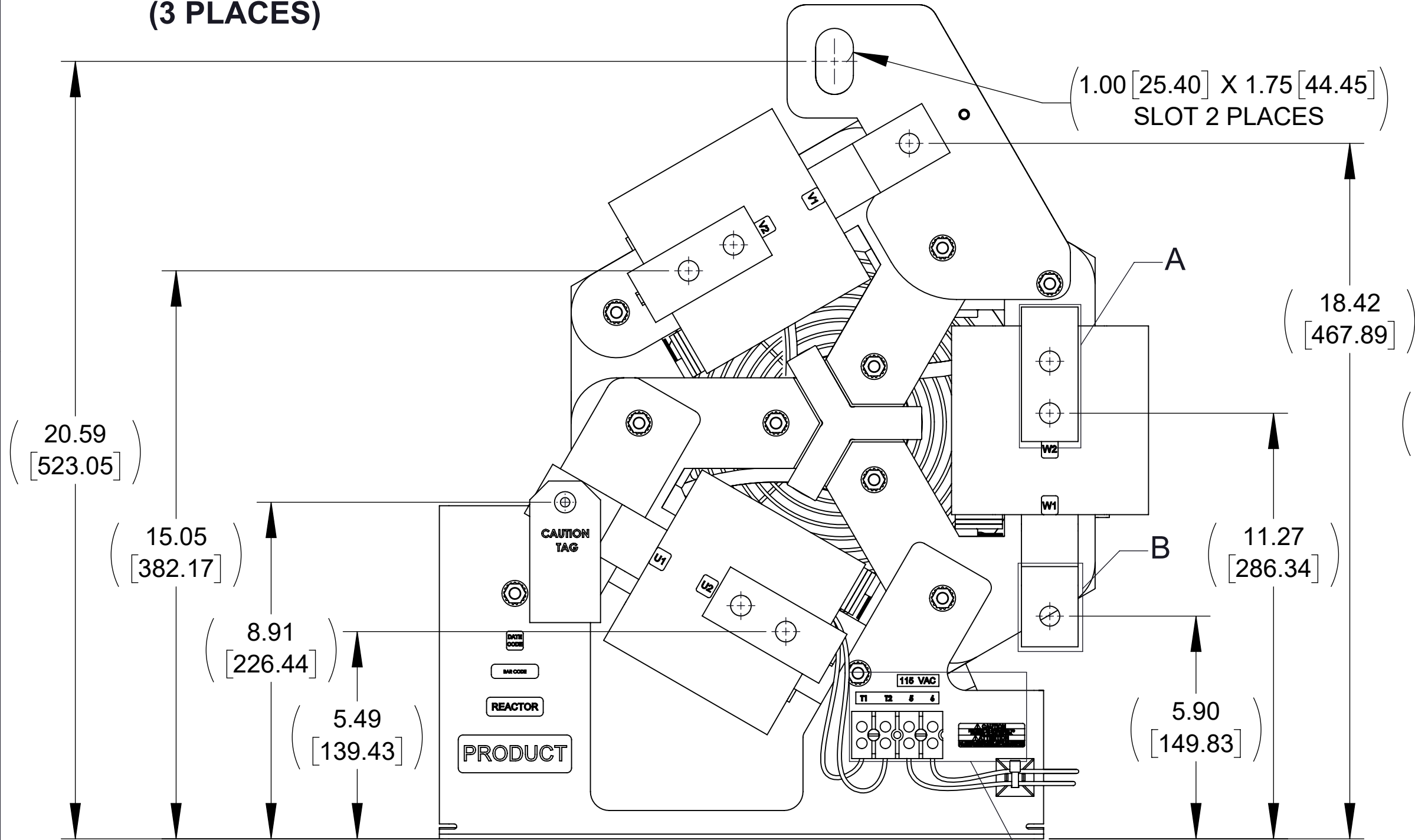
DETAIL C
CUSTOMER CONNECTION
DETAIL VIEW
(THERMAL & FAN)



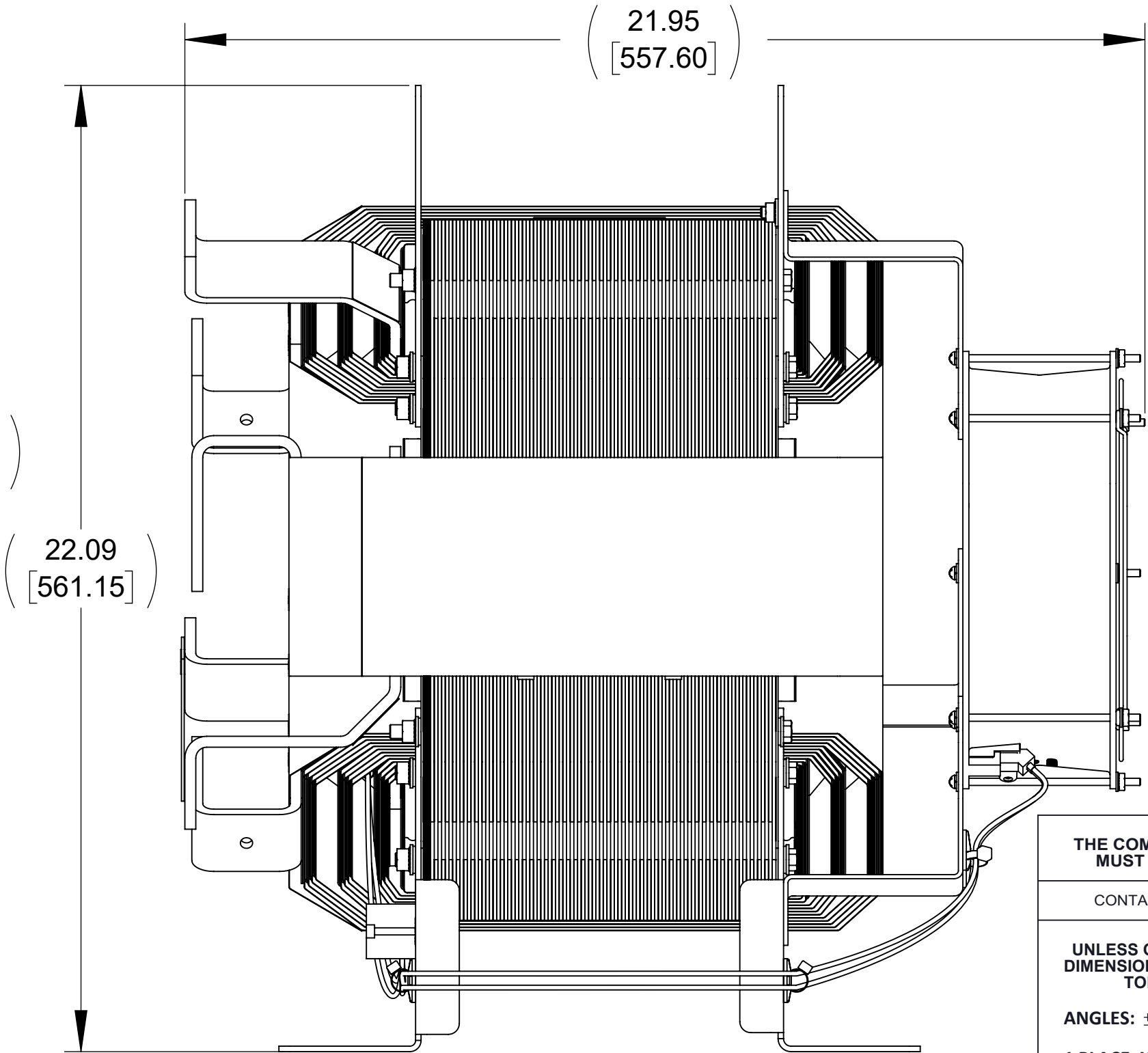
DETAIL A
(3 PLACES)



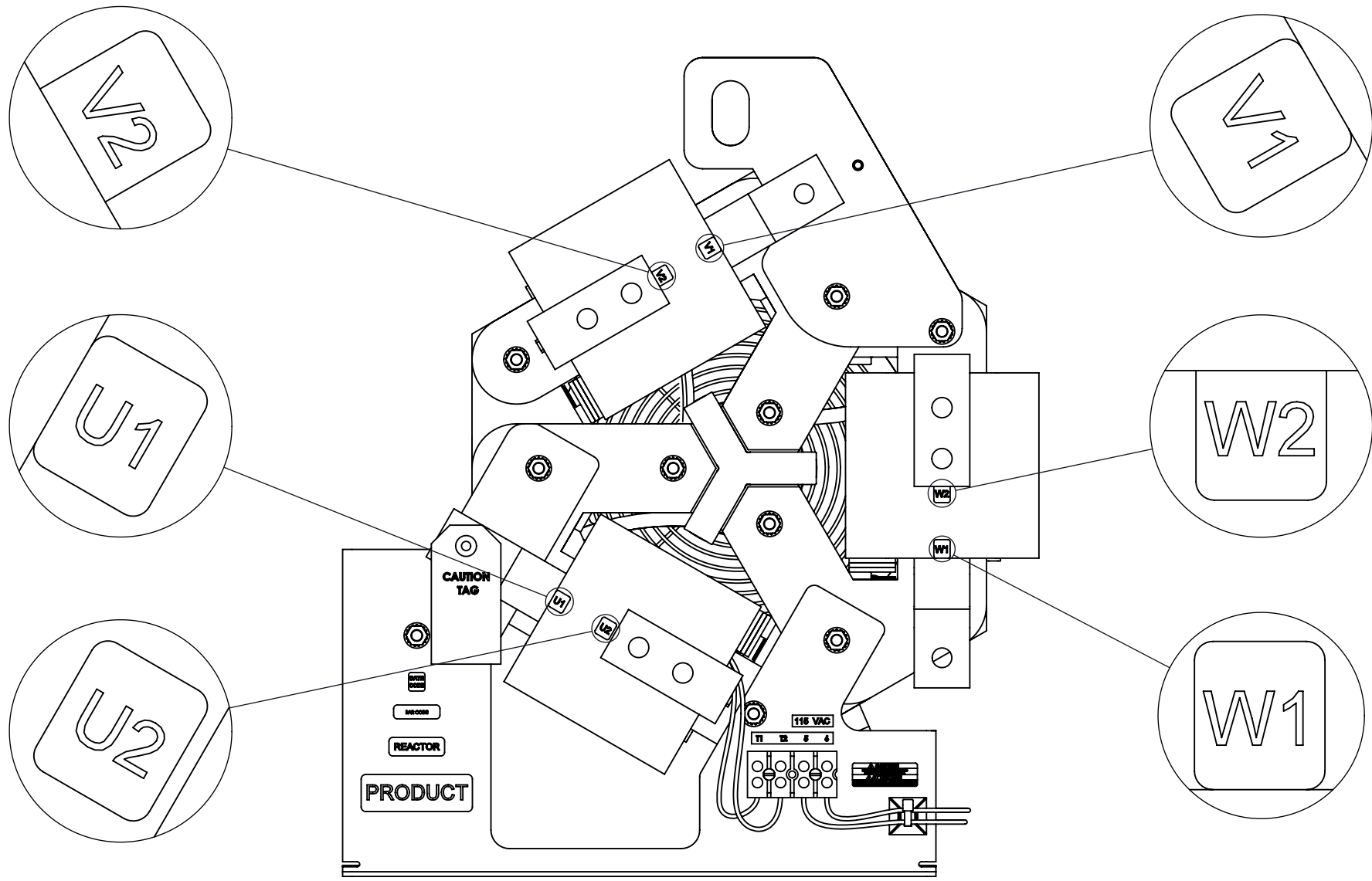
DETAIL B
(3 PLACES)



FRONT VIEW



SIDE VIEW



CUSTOMER CONNECTION
DETAIL VIEW

NOTES:

1. TERMINAL WIRE RANGE: 4-18 AWG.
2. TERMINAL SCREW TIGHTENING TORQUE: 16 IN/LBS.
3. REFER TO USER MANUAL FOR COMPLETE INSTALLATION INSTRUCTIONS.
4. FILTER INCLUDES: CAPPANEL-611C (QTY. 1) AND CMB-015 (QTY. 1).

THE COMPONENT, PART OR ASSEMBLY DESCRIBED IN THIS DOCUMENT MUST COMPLY WITH THE EU(EUROPEAN UNION) DIRECTIVE ROHS2		DRAWN BY: KV	DATE 06/02/21	CONFIDENTIAL AND PROPRIETARY INFORMATION THIS DOCUMENT CONTAINS CONFIDENTIAL AND PROPRIETARY INFORMATION OF MTE CORPORATION AND MAY NOT BE USED, COPIED OR DISCLOSED TO OTHERS EXCEPT WITH THE AUTHORIZED WRITTEN PERMISSION OF MTE CORPORATION	
CONTAINS <0.1% OF ANY SVHC BY WEIGHT PER REACH REGULATION		CHECKED BY:	DATE	DESCRIPTION SINEWAVE NEXUS FILTER 415A 380-480V 50/60Hz OPEN PANEL	
UNLESS OTHERWISE SPECIFIED DIMENSIONS ARE IN INCHES [MM] TOLERANCES ARE: ANGLES: ± 1 °		ME APPROVED BY:	DATE	SIZE D	
1 PLACE .X: ± .1 [2.5] 2 PLACE .XX: ± .03 [0.76] 3 PLACE .XXX: ± .010 [0.254]		RE APPROVED BY:	DATE	DWG No. CD SWNM0415D	
MTE POWER QUALITY. SOLVED. A STEEL PARTNERS COMPANY N83W12650 Stratton Cir - Suite 100 Menomonee Falls, WI 53051 USA 800.455-4683 262.253-8200		SCALE 1:3		Sheet1	REV SHEET 1 OF 1