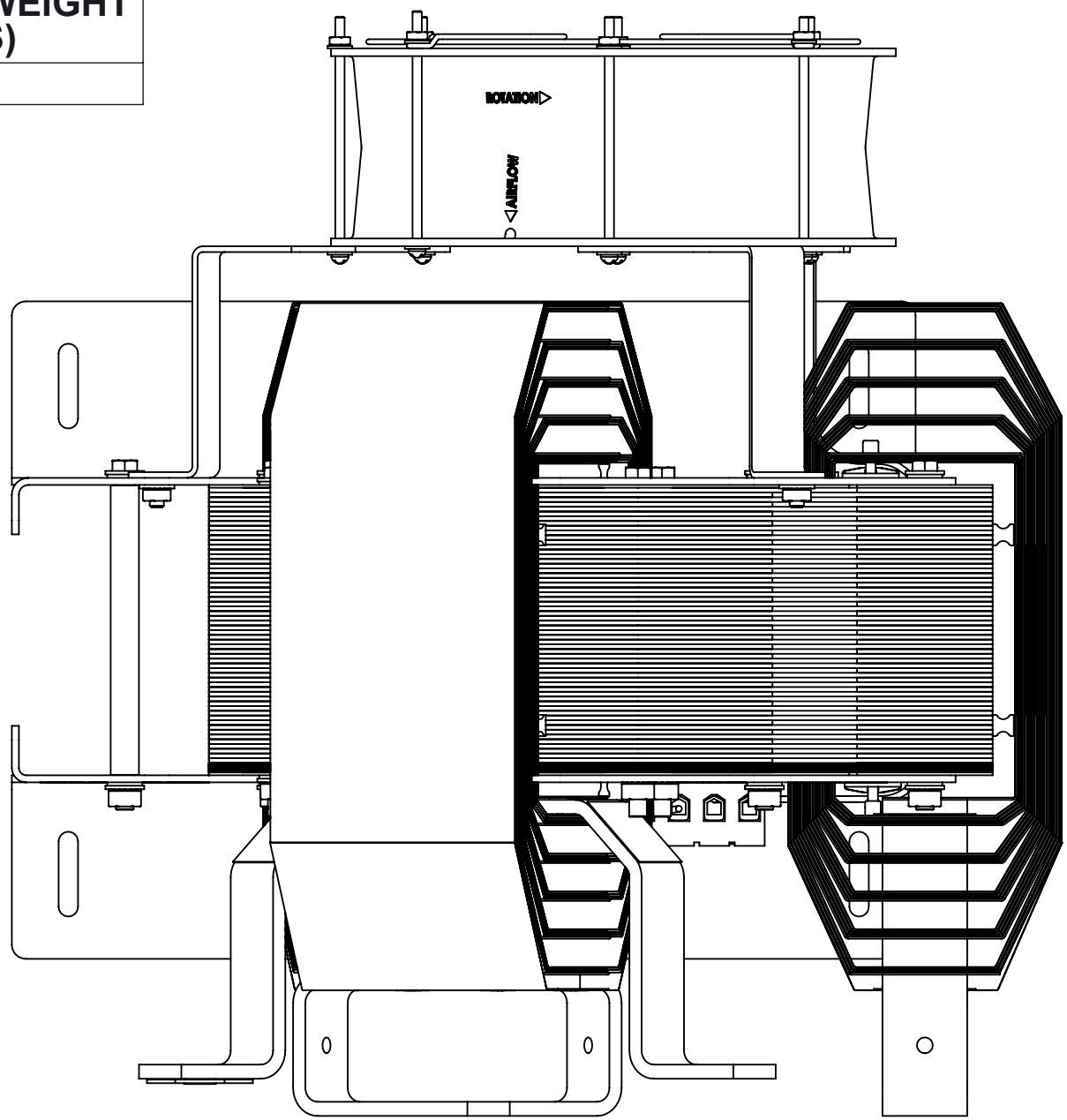
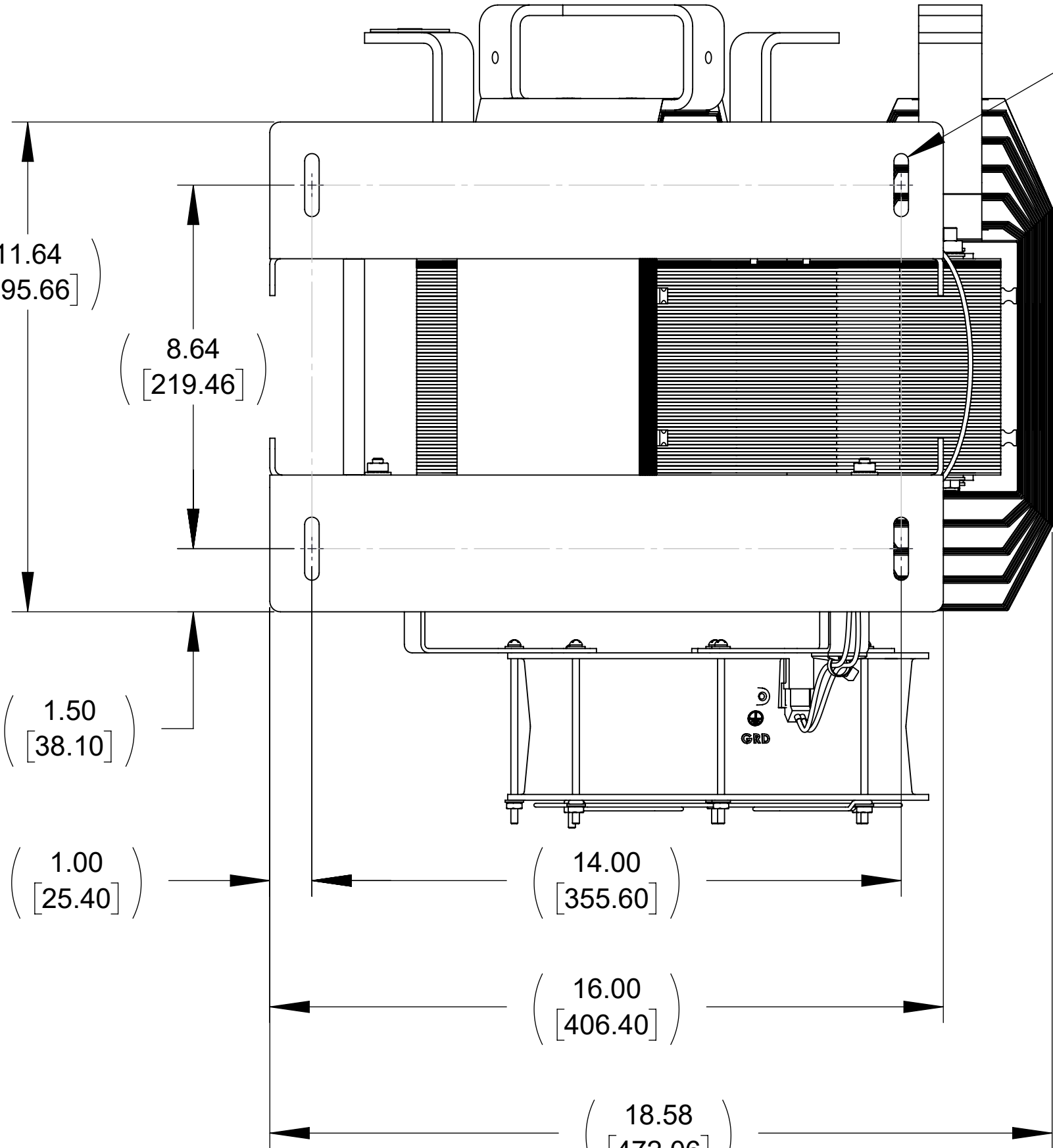


APPROX. WEIGHT (LBS)	APPROX. WEIGHT (LBS)
291	727

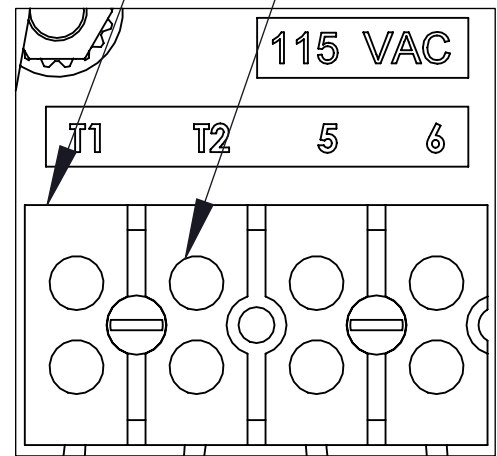
ECO No	DESCRIPTION	REV BY	DATE
M14998	UPDATED DESCRIPTION, ADDED WATTS LOSS	MK	07/24/23



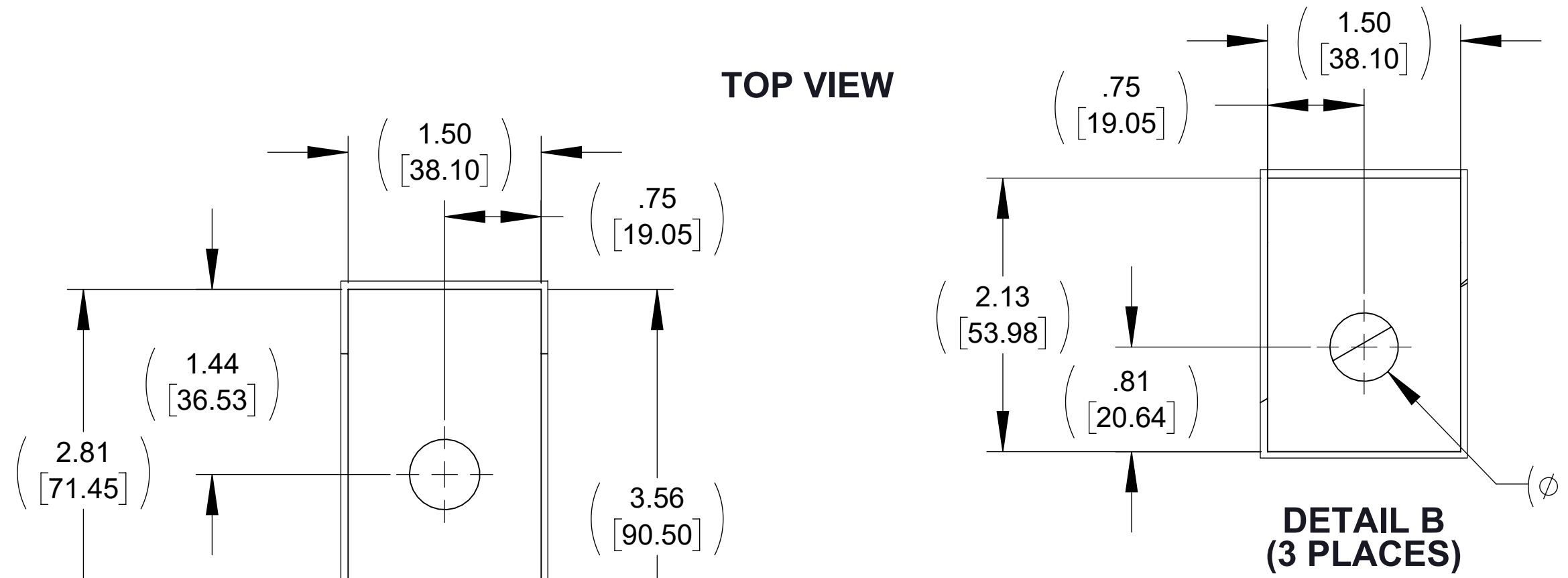
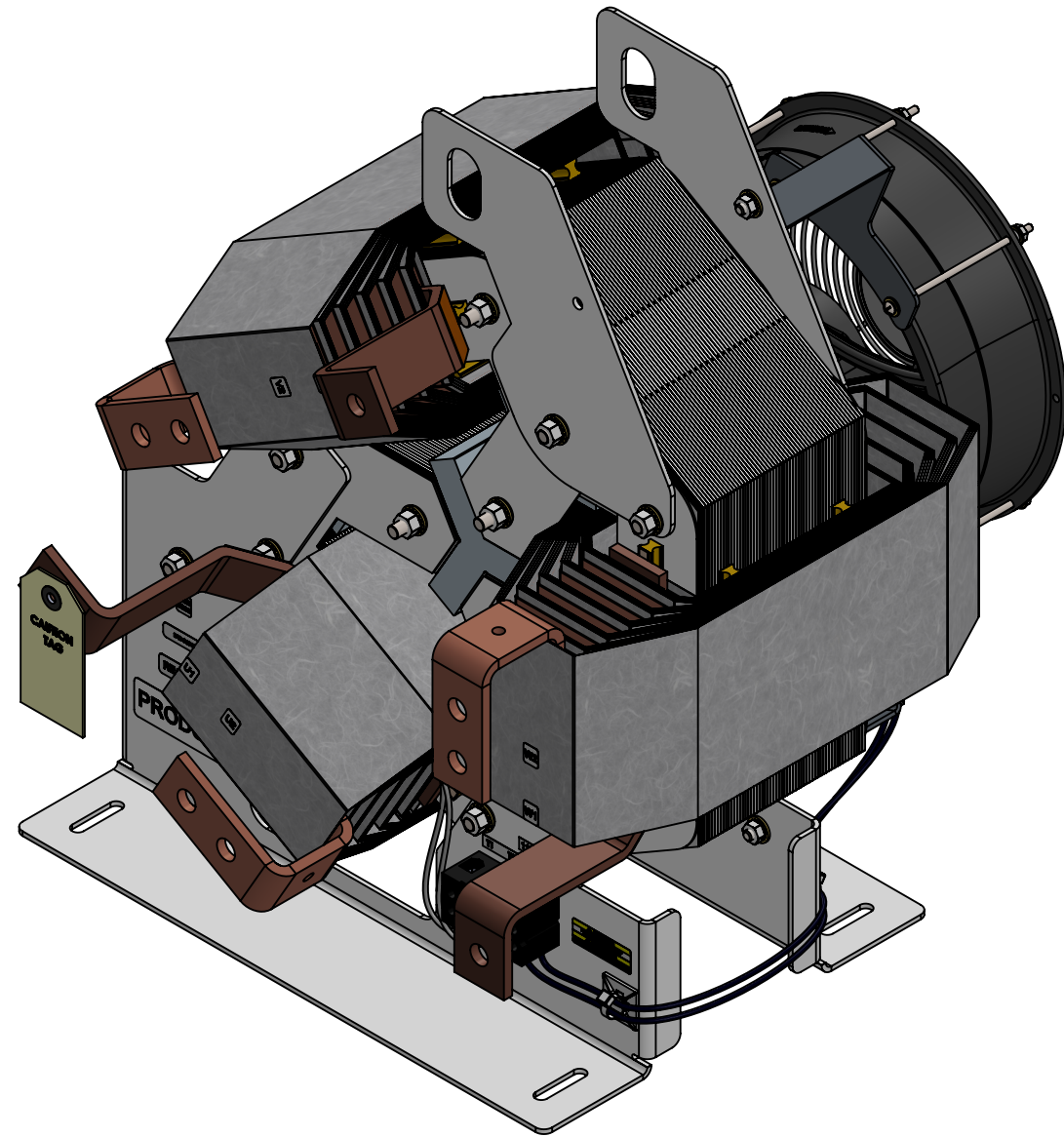
TOP VIEW



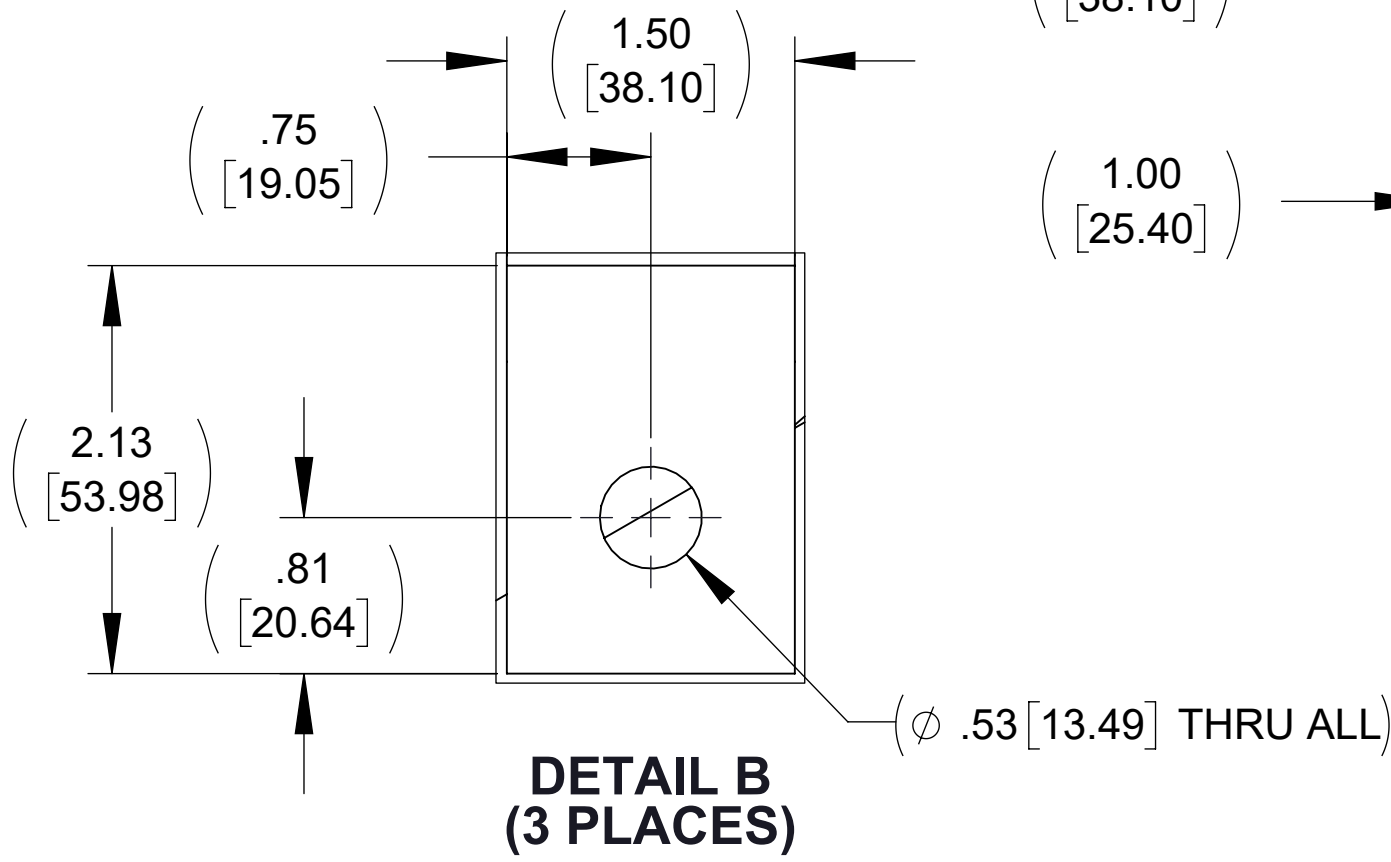
BOTTOM VIEW



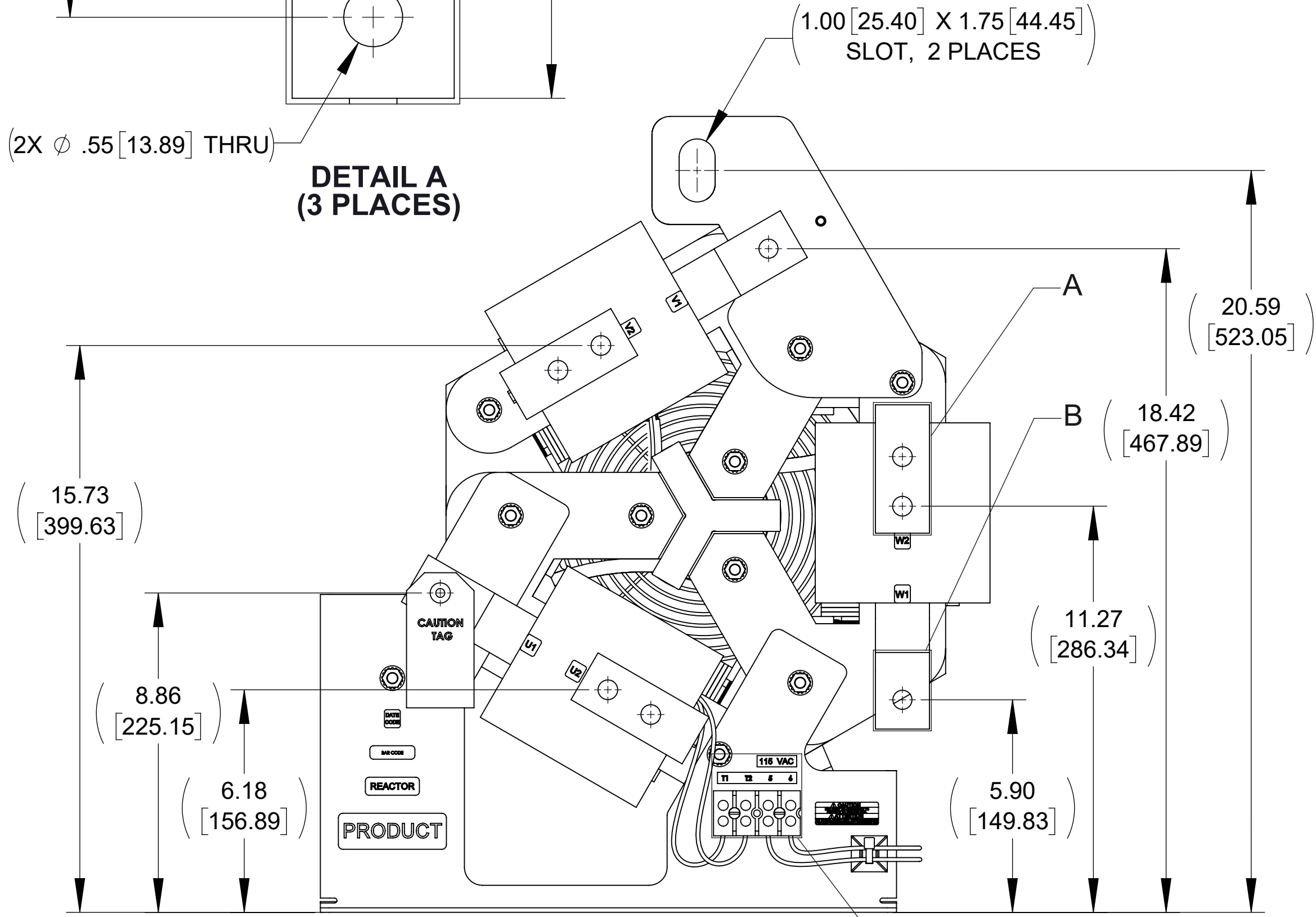
DETAIL C
CUSTOMER CONNECTION
DETAIL VIEW
(THERMAL & FAN)



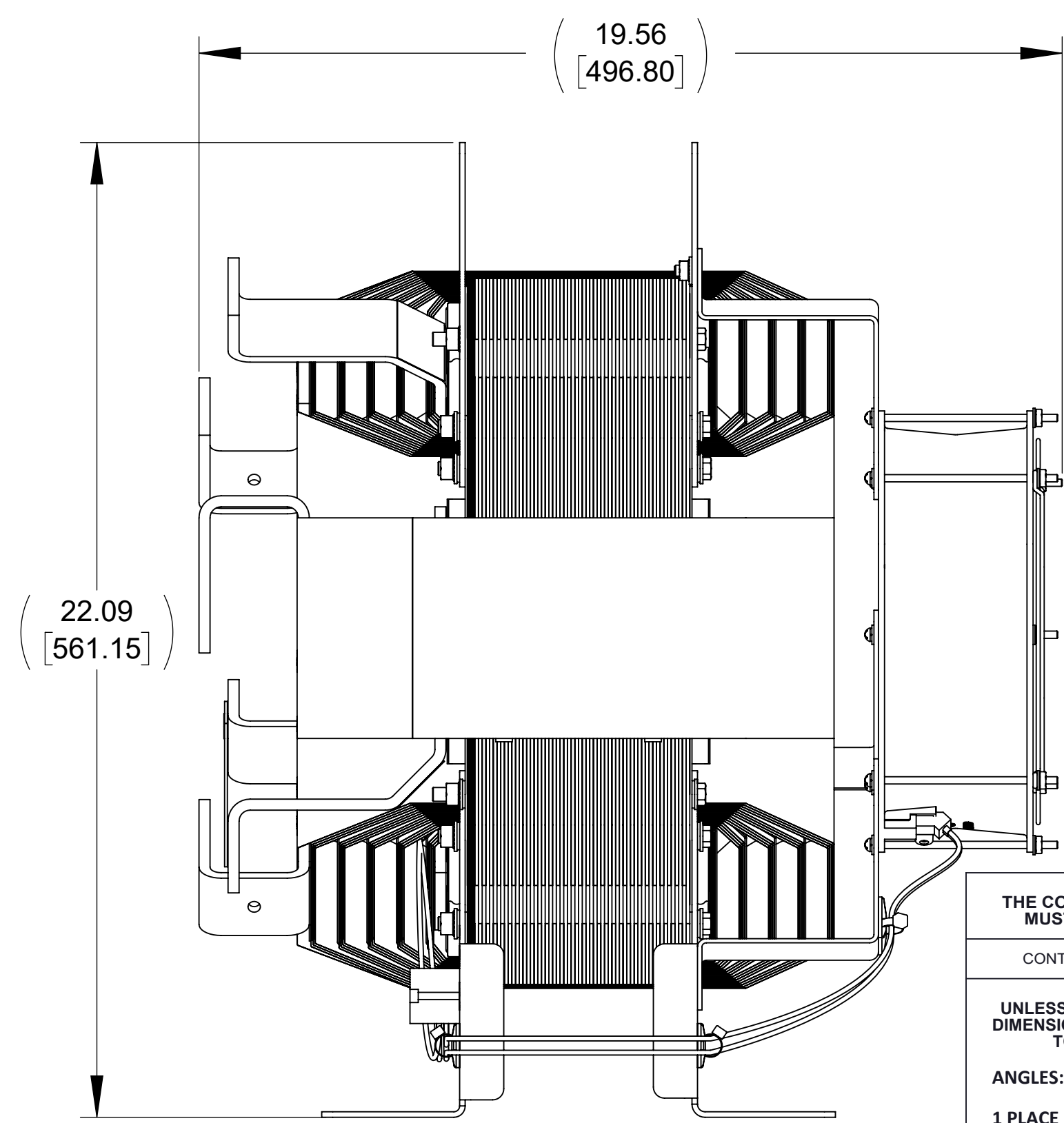
DETAIL A
(3 PLACES)



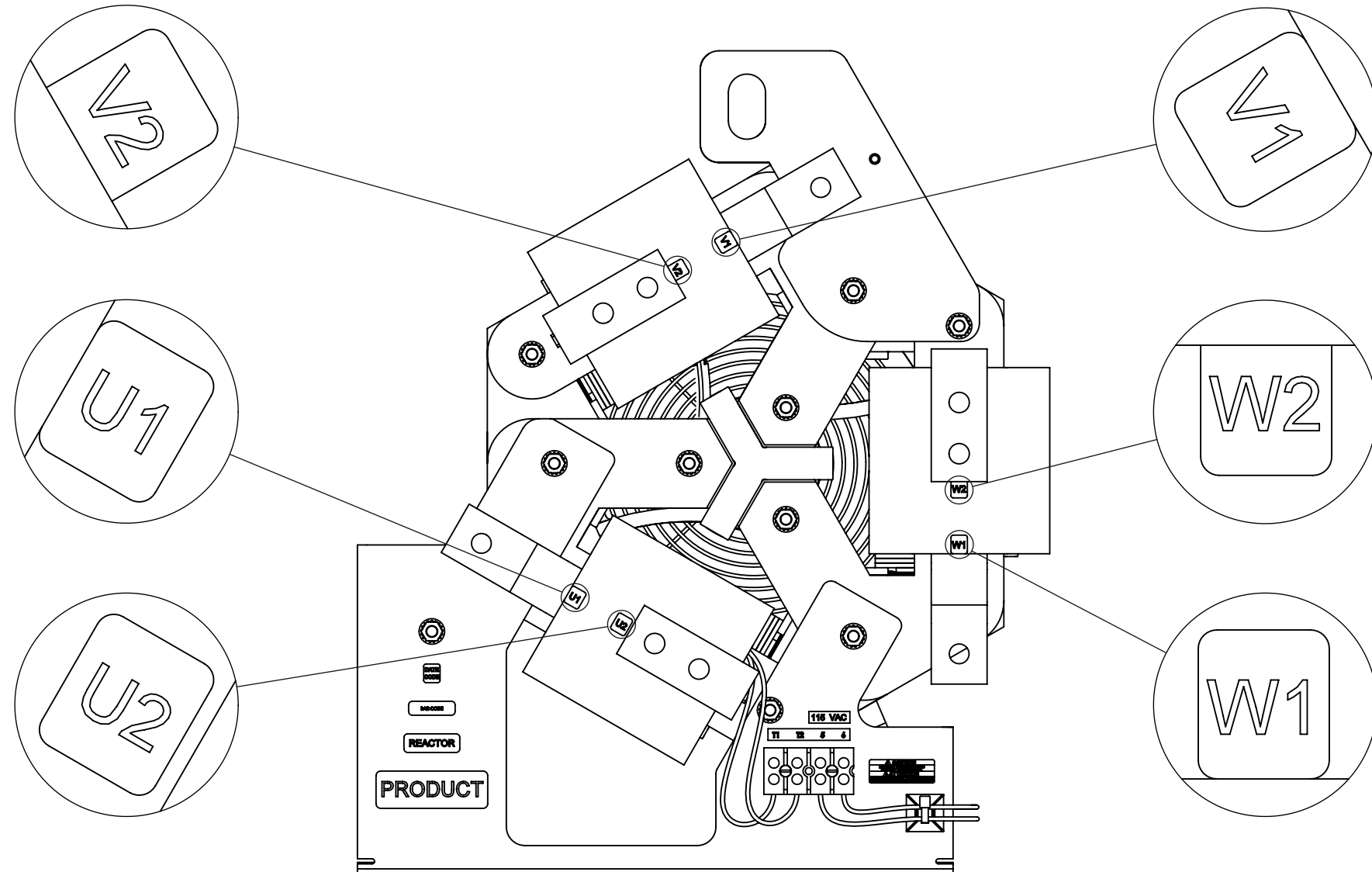
DETAIL B
(3 PLACES)



FRONT VIEW




SIDE VIEW



CUSTOMER CONNECTION
DETAIL VIEW

NOTES:

1. TERMINAL WIRE RANGE: 4-18 AWG.
2. TERMINAL SCREW TIGHTENING TORQUE: 16 IN.LBS.
3. REFER TO USER MANUAL FOR COMPLETE INSTALLATION INSTRUCTIONS.
4. FILTER INCLUDES: CAPPANEL-608C (QTY. 1) AND CMB-015 (QTY. 1).

THE COMPONENT, PART OR ASSEMBLY DESCRIBED IN THIS DOCUMENT MUST COMPLY WITH THE EU (EUROPEAN UNION) DIRECTIVE RoHS2		DRAWN BY: KV	DATE 05/18/21	CONFIDENTIAL AND PROPRIETARY INFORMATION THIS DOCUMENT CONTAINS CONFIDENTIAL AND PROPRIETARY INFORMATION OF MTE CORPORATION AND MAY NOT BE USED, COPIED OR DISCLOSED TO OTHERS EXCEPT WITH THE AUTHORIZED WRITTEN PERMISSION OF MTE CORPORATION	
CONTAINS <0.1% OF ANY SVHC BY WEIGHT PER REACH REGULATION		CHECKED BY: MK	DATE 07/24/23		
UNLESS OTHERWISE SPECIFIED DIMENSIONS ARE IN INCHES [MM] TOLERANCES ARE: ANGLES: ± 1 ° 1 PLACE .X: ± .1 [2.5] 2 PLACE .XX: ± .03 [0.76] 3 PLACE .XXX: ± .010 [0.254]		ME APPROVED BY: GV	DATE 07/28/23	DESCRIPTION SINEWAVE NEXUS FILTER 200A 380-480V 50/60Hz OPEN PANEL	
 N83W12650 Stratton Cir - Suite 100 Menomonee Falls, WI 53051 USA 800.455-4683 262.253-8200		RE APPROVED BY:	DATE 07/31/23	SIZE D	DWG No. CD SWNM0200D
				SCALE 1:3	REV 02
				Sheet1	
				SHEET 1 OF 1	