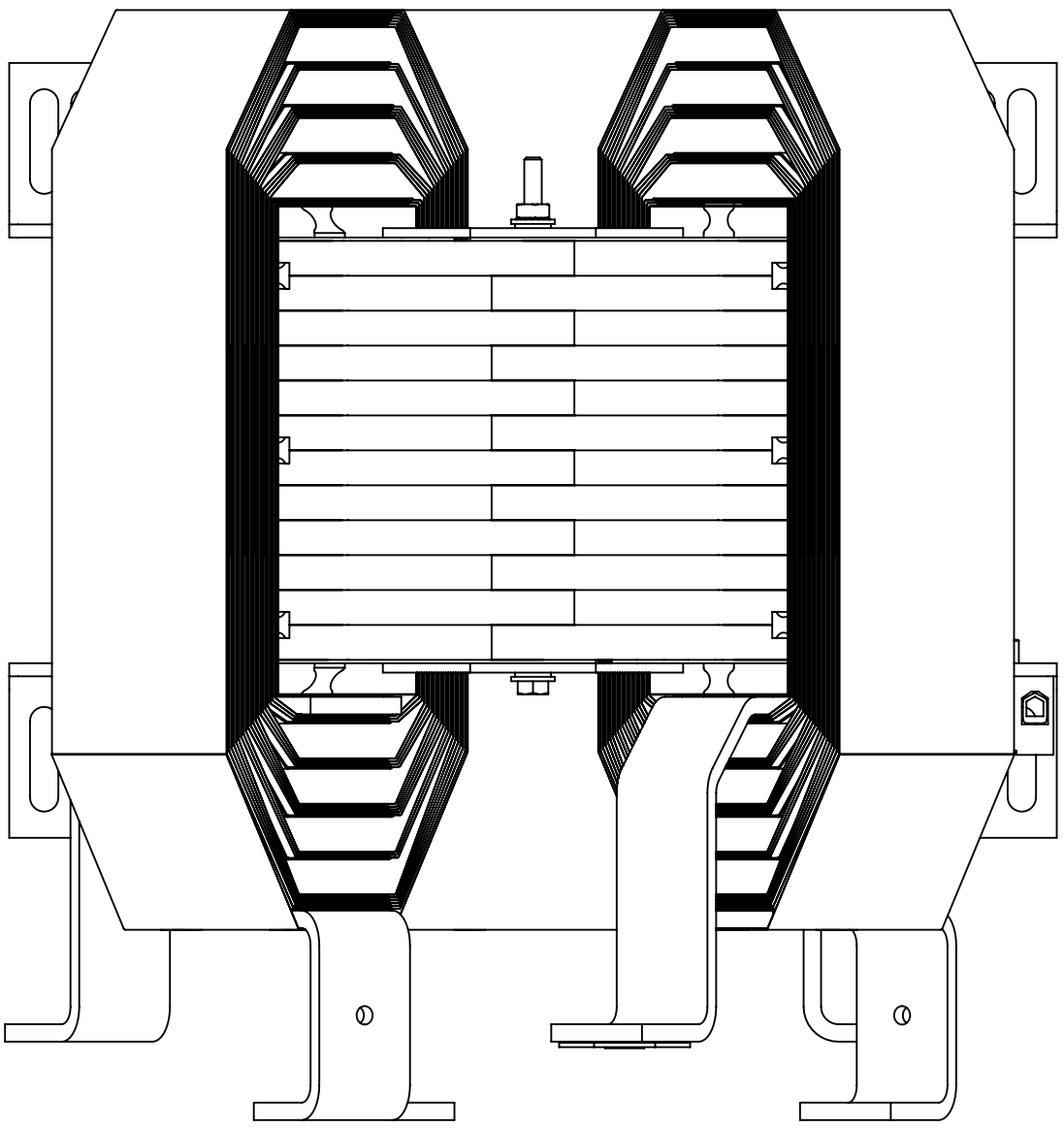
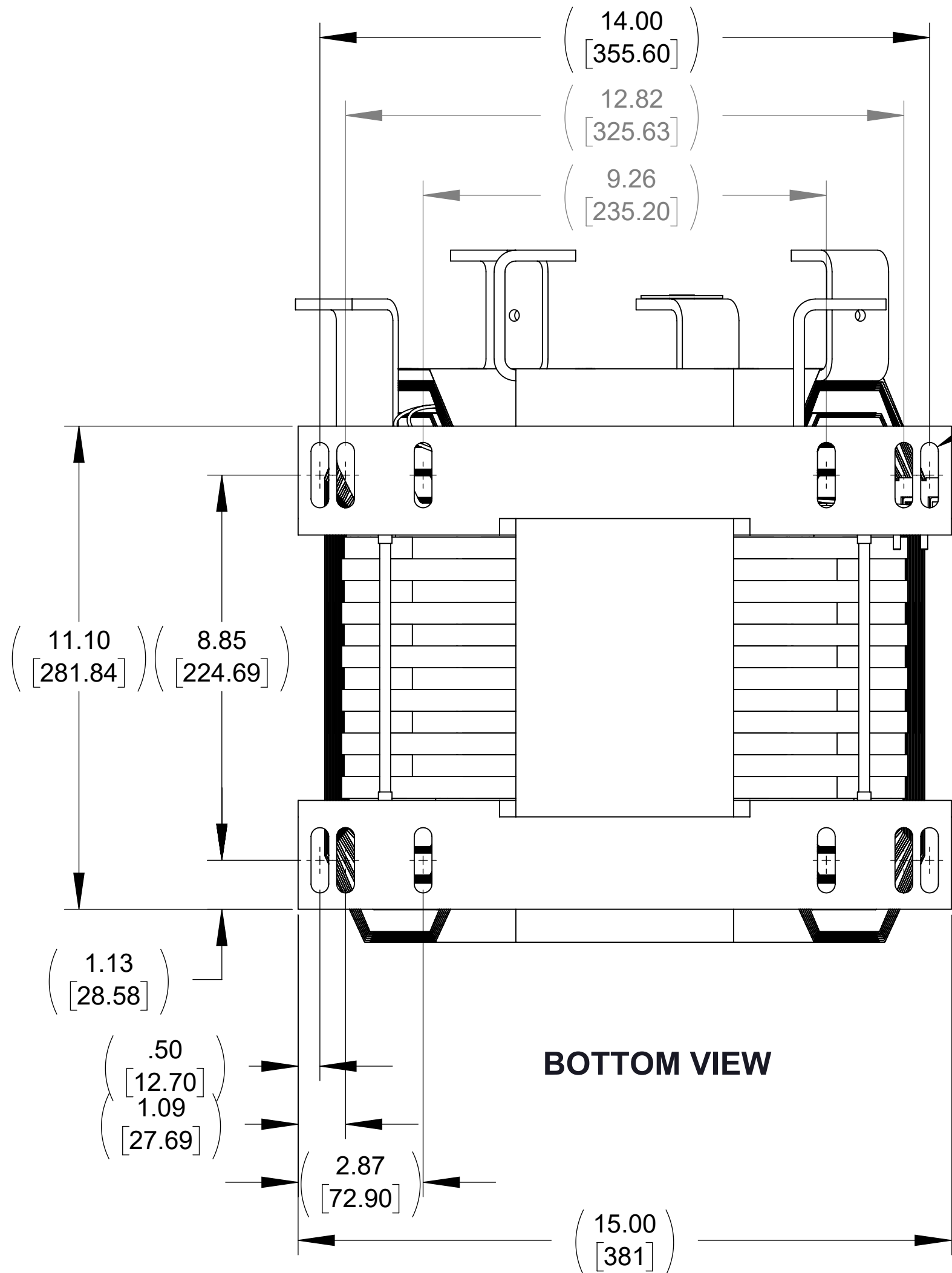


APPROX. WEIGHT  
(LBS)  
210

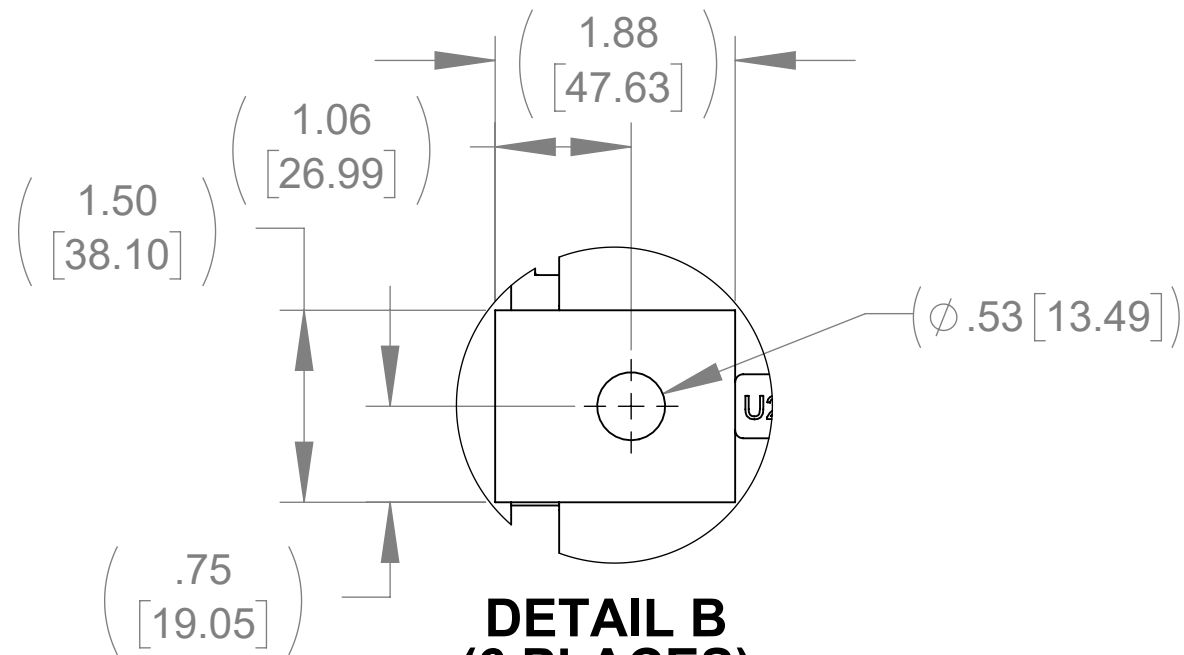
ECO No	DESCRIPTION	REV BY	DATE
M12106	UPDATE TO MODIFIED BASE BRACKET	MN	11/06/19



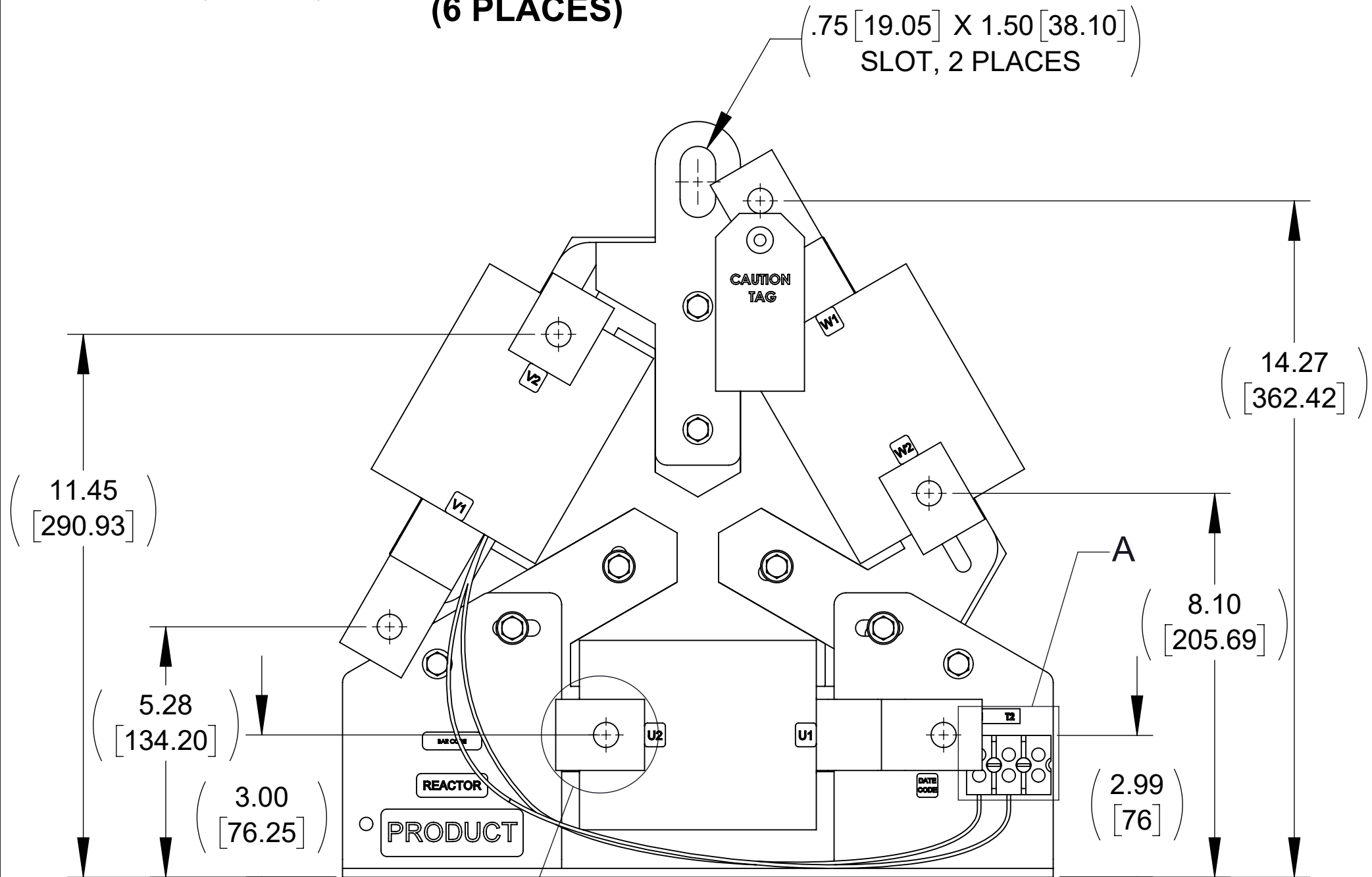
TOP VIEW



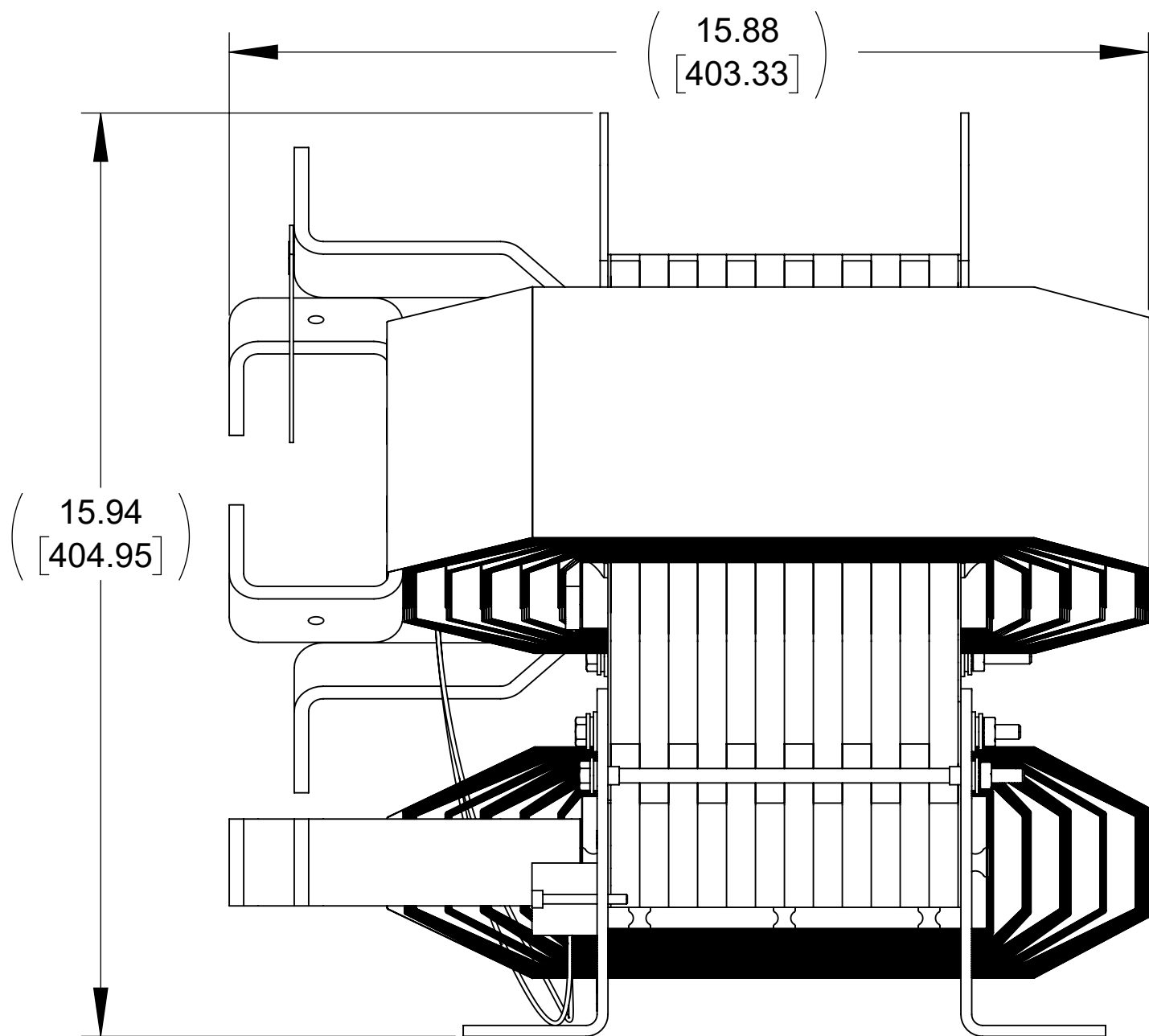
BOTTOM VIEW



DETAIL B  
(6 PLACES)

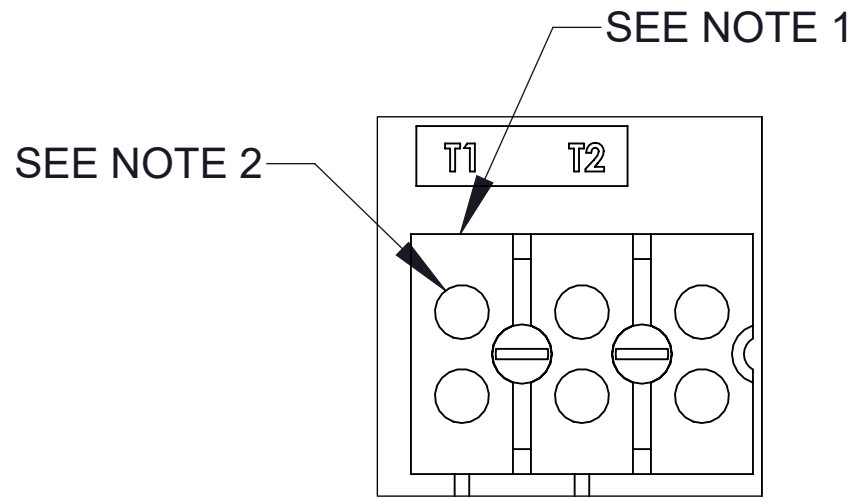


FRONT VIEW

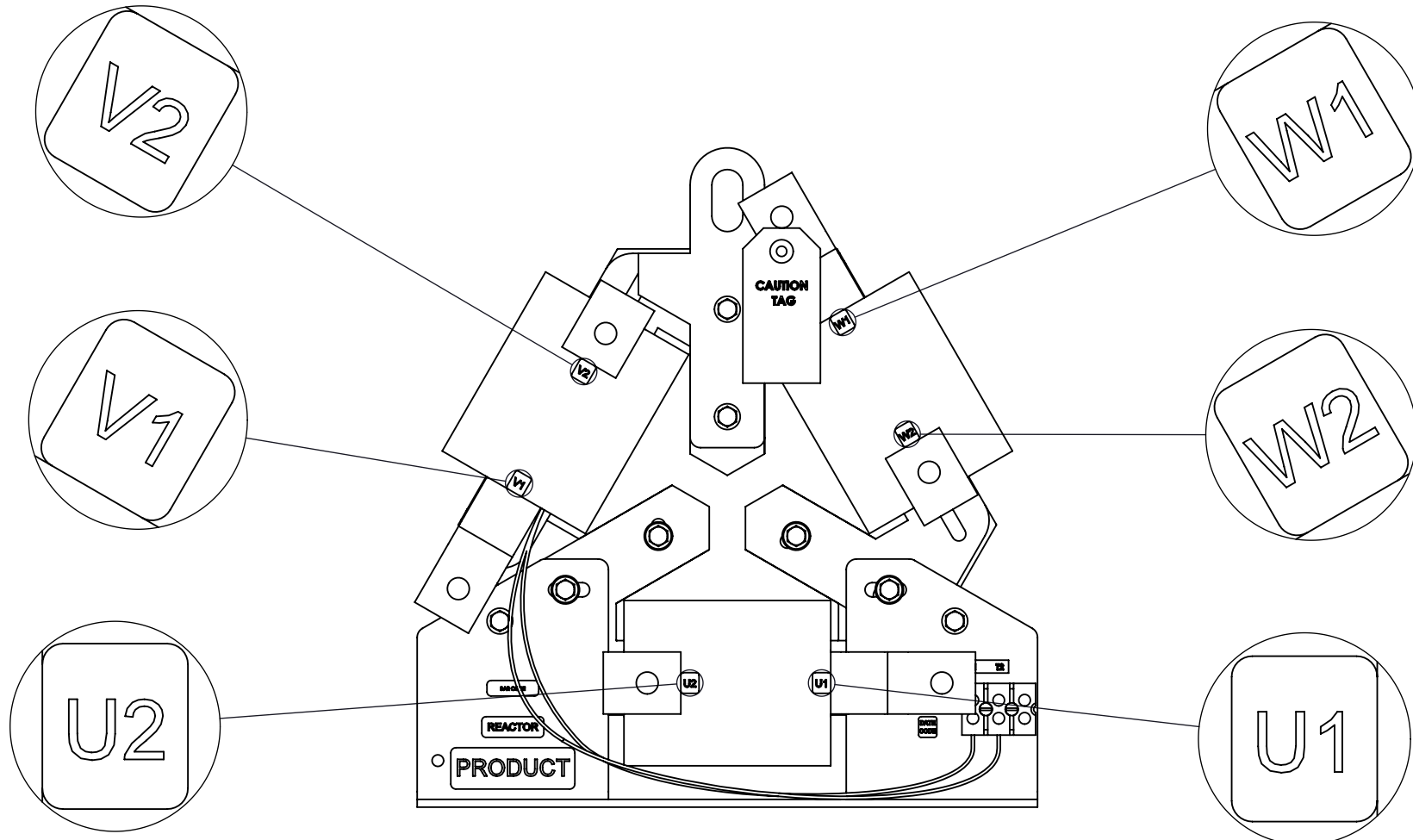
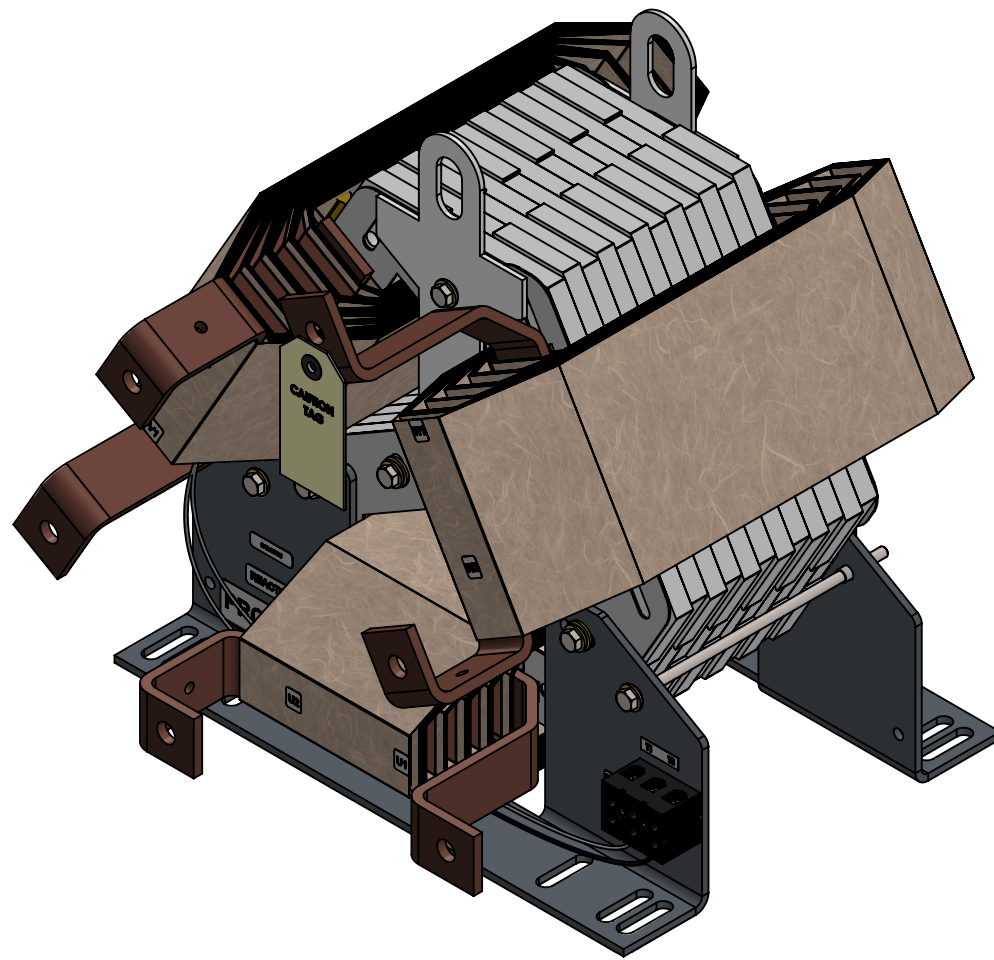


SIDE VIEW

(.41 [10.32] X 1.50 [38.10])  
SLOT, 12 PLACES




DETAIL A  
CUSTOMER CONNECTION  
DETAIL VIEW (THERMAL)



CUSTOMER CONNECTION  
DETAIL VIEW

NOTES:

1. TERMINAL WIRE RANGE: 4-18 AWG.
2. TERMINAL SCREW TIGHTENING TORQUE: 16 IN.LBS.
3. REFER TO USER MANUAL FOR COMPLETE INSTALLATION INSTRUCTIONS.
4. FILTER INCLUDES: CAP-512SW(QTY. 1), CAP-516SW(QTY.1) AND CMB-009(QTY. 1).

THE COMPONENT, PART OR ASSEMBLY DESCRIBED IN THIS DOCUMENT MUST COMPLY WITH THE EU(EUROPEAN UNION) DIRECTIVE RoHS2		MATERIAL		CONFIDENTIAL AND PROPRIETARY INFORMATION THIS DOCUMENT CONTAINS CONFIDENTIAL AND PROPRIETARY INFORMATION OF MTE CORPORATION AND MAY NOT BE USED, COPIED OR DISCLOSED TO OTHERS EXCEPT WITH THE AUTHORIZED WRITTEN PERMISSION OF MTE CORPORATION				
CONTAINS <0.1% OF ANY SVHC BY WEIGHT PER REACH REGULATION				DESCRIPTION				
UNLESS OTHERWISE SPECIFIED DIMENSIONS ARE IN INCHES [MM] TOLERANCES ARE:  ANGLES: ± 1 °  1 PLACE .X: ± .1 [2.5]  2 PLACE .XX: ± .03 [0.76]  3 PLACE .XXX: ± .010 [0.254]		  N83 W13330 Leon Road Menomonee Falls, WI 53051 USA 800.455.4683 262.253.8200		DRAWN MN 02/19/19		SINEWAVE NEXUS FILTER 160A 480V 60Hz OPEN PANEL		
				CHECKED MN 11/06/19				
				APPROVED AK 11/19/19				
				SIZE D		DWG No. CD SWNM0160D		REV 02
				SCALE 3:8				SHEET 1 OF 1