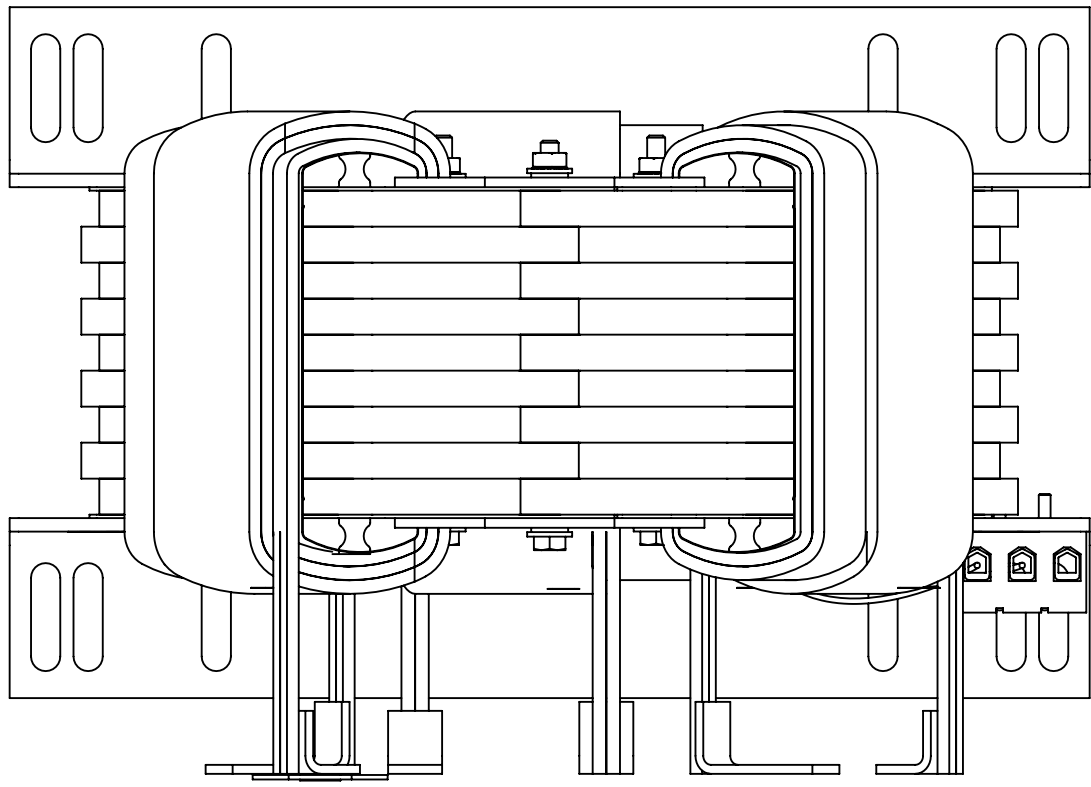
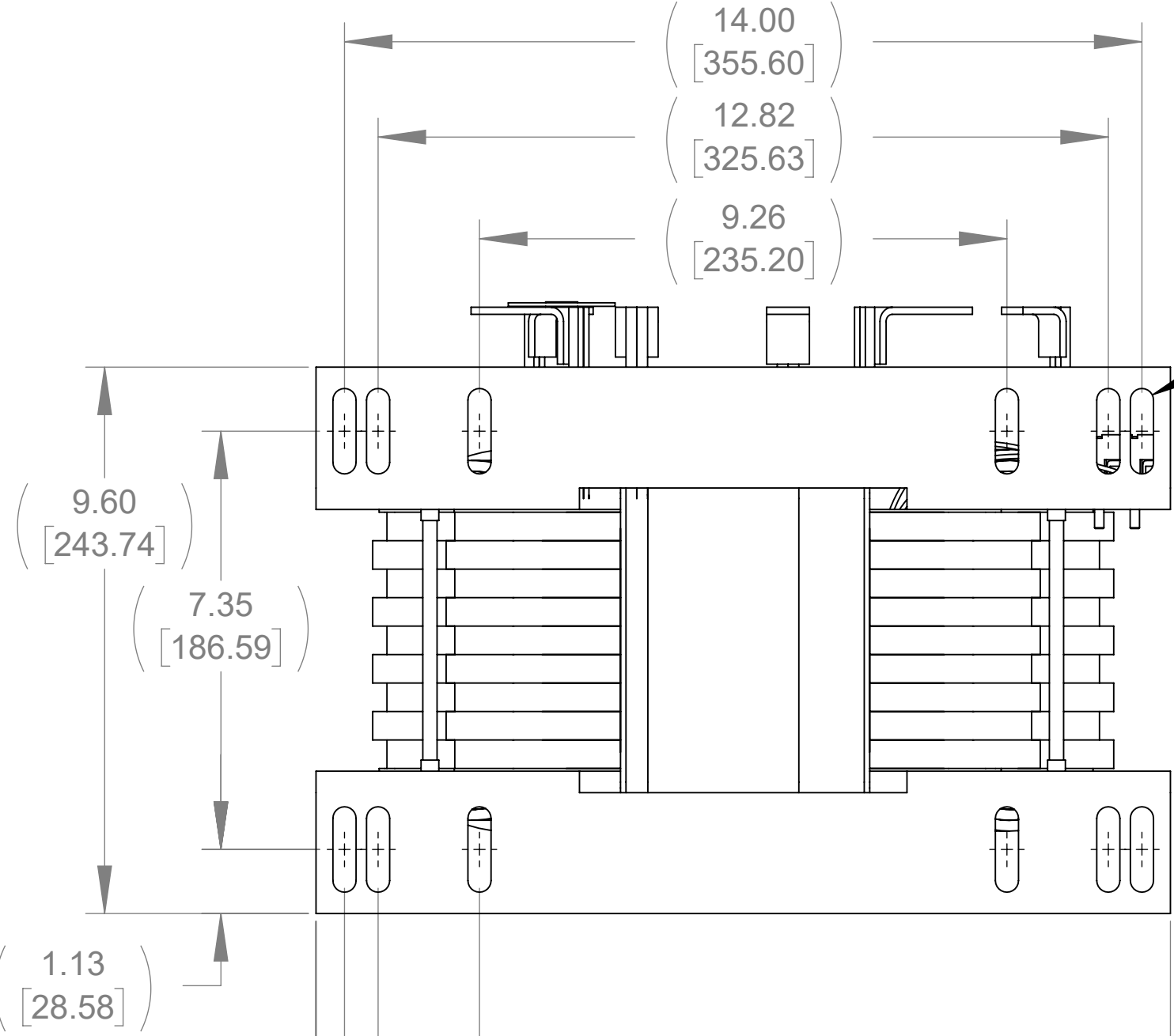


APPROX. WEIGHT  
(LBS)  
141

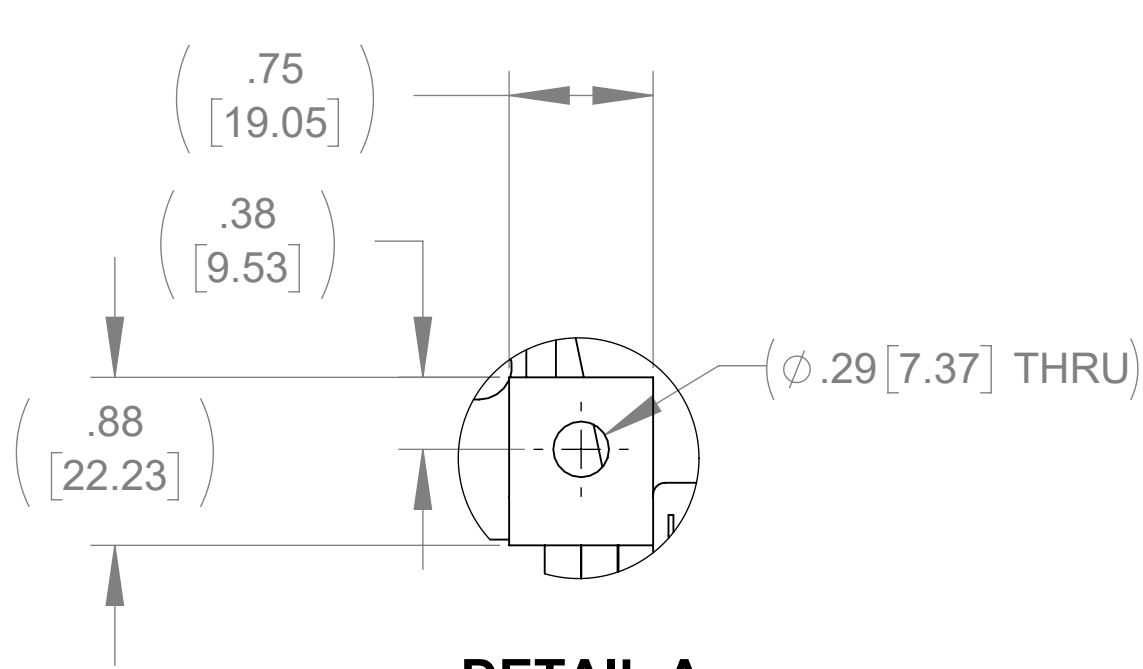
ECO No	DESCRIPTION	REV BY	DATE
M12075	REPLACE CAPPANEL W/CAP, REPLACE CMP W/CMB	MN	11/07/19



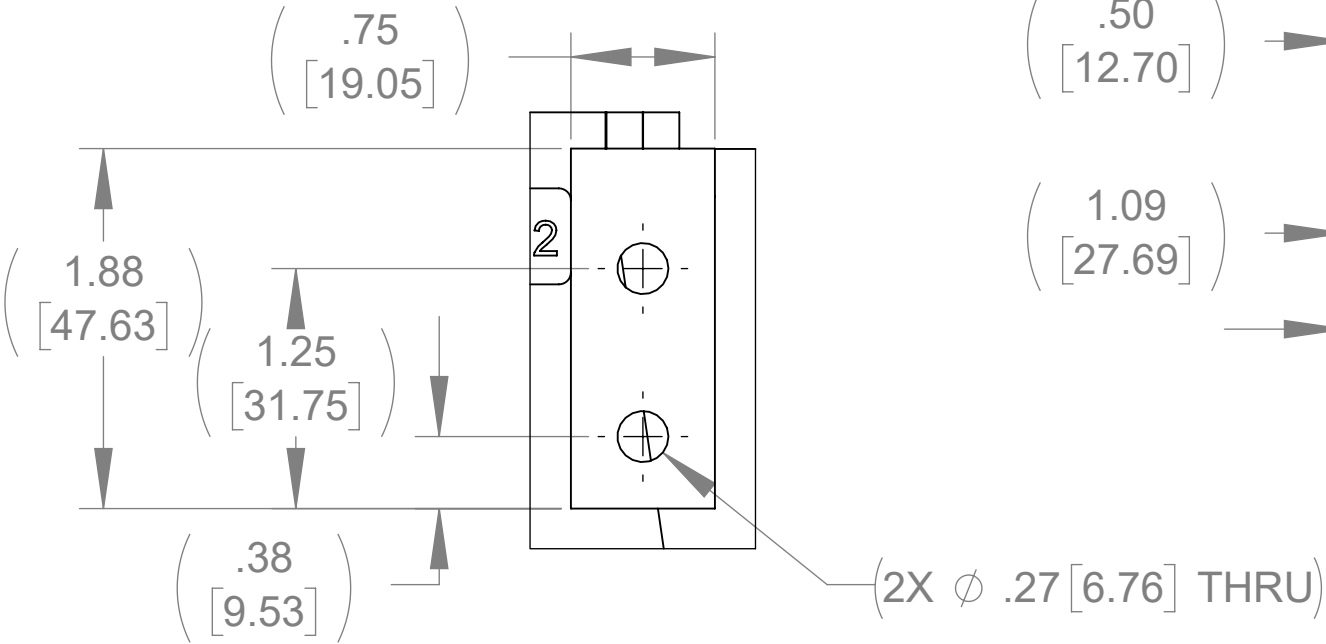
TOP VIEW



BOTTOM VIEW

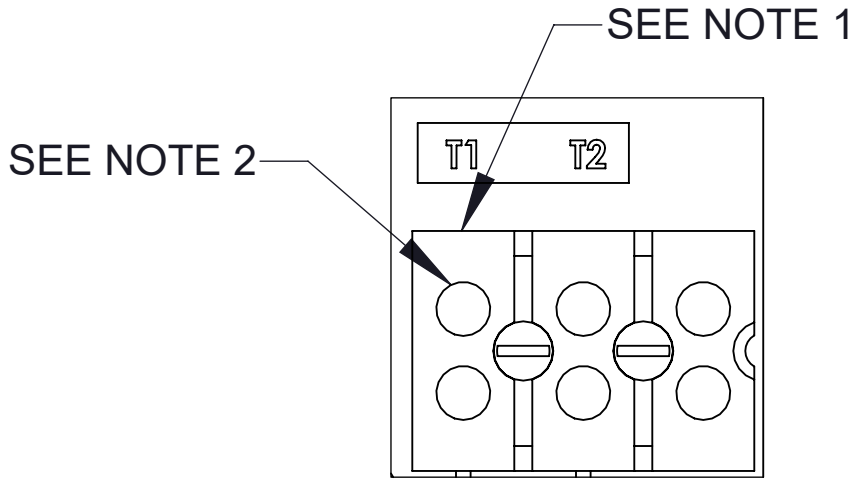


DETAIL A  
(3 PLACES)

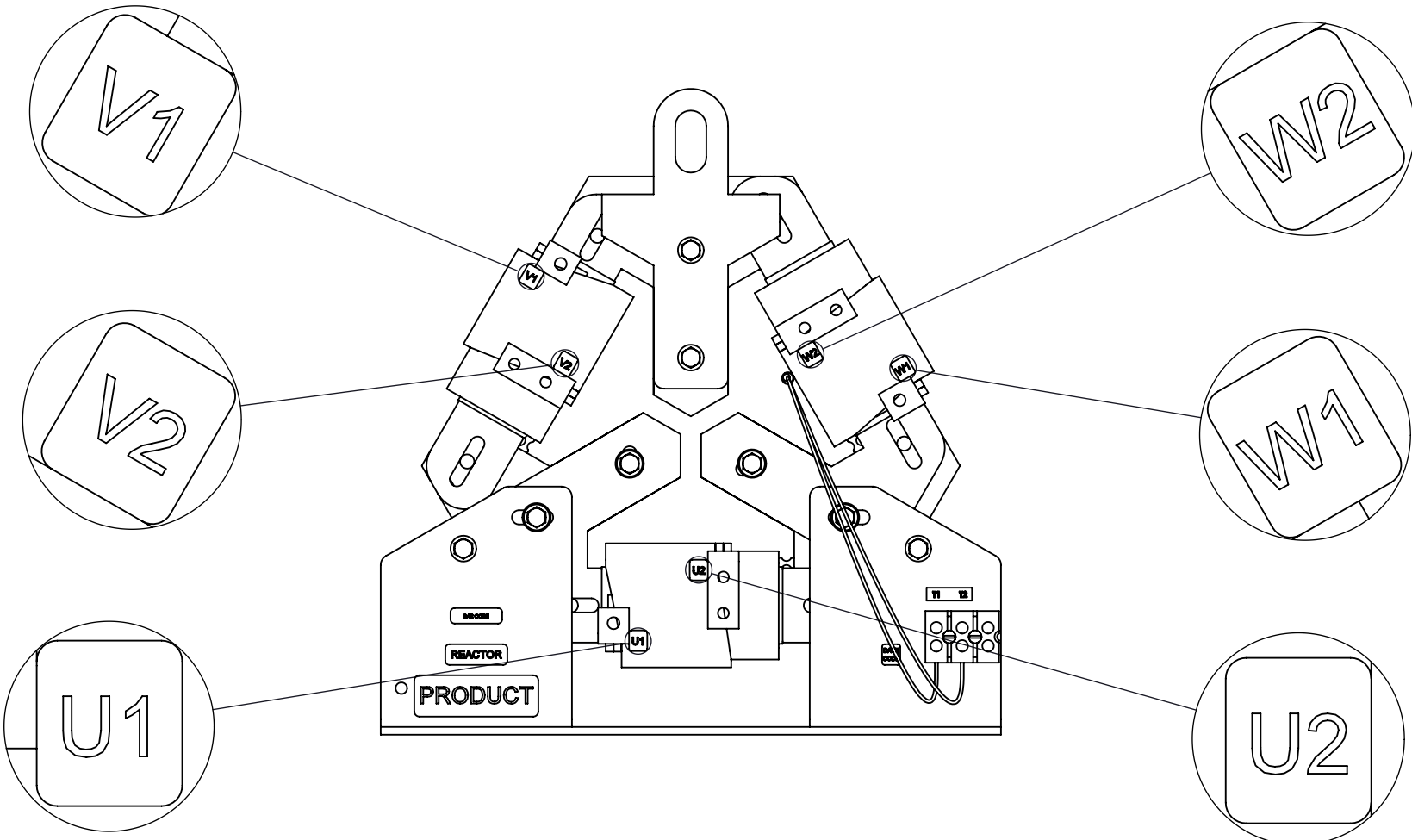
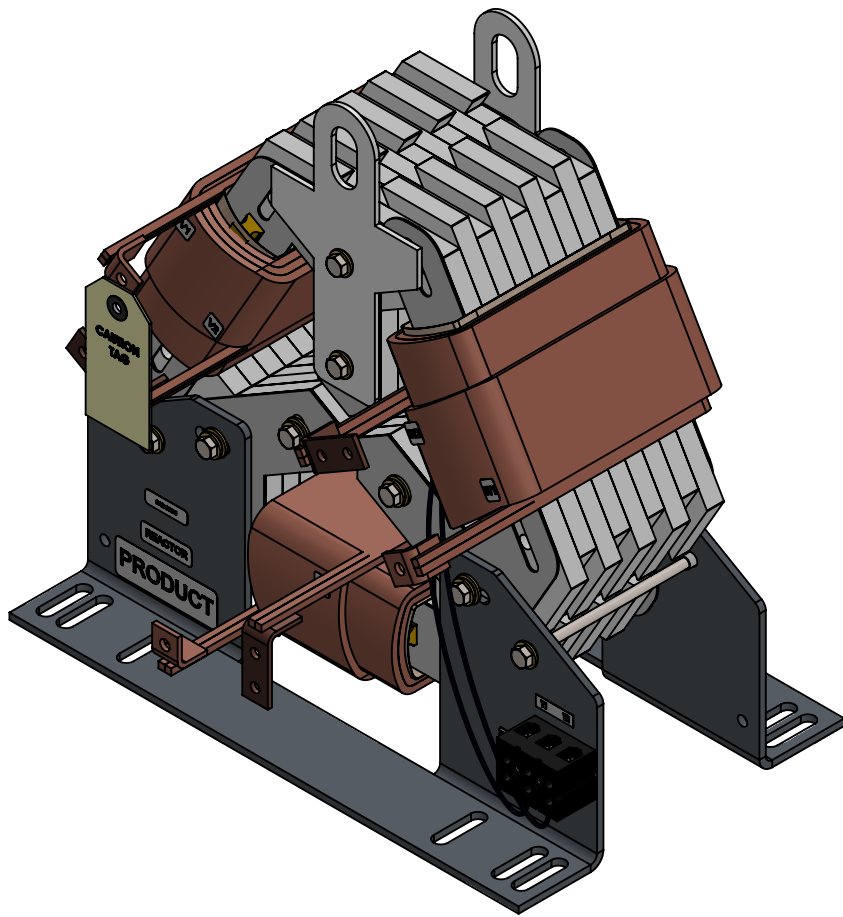


DETAIL B  
(3 PLACES)

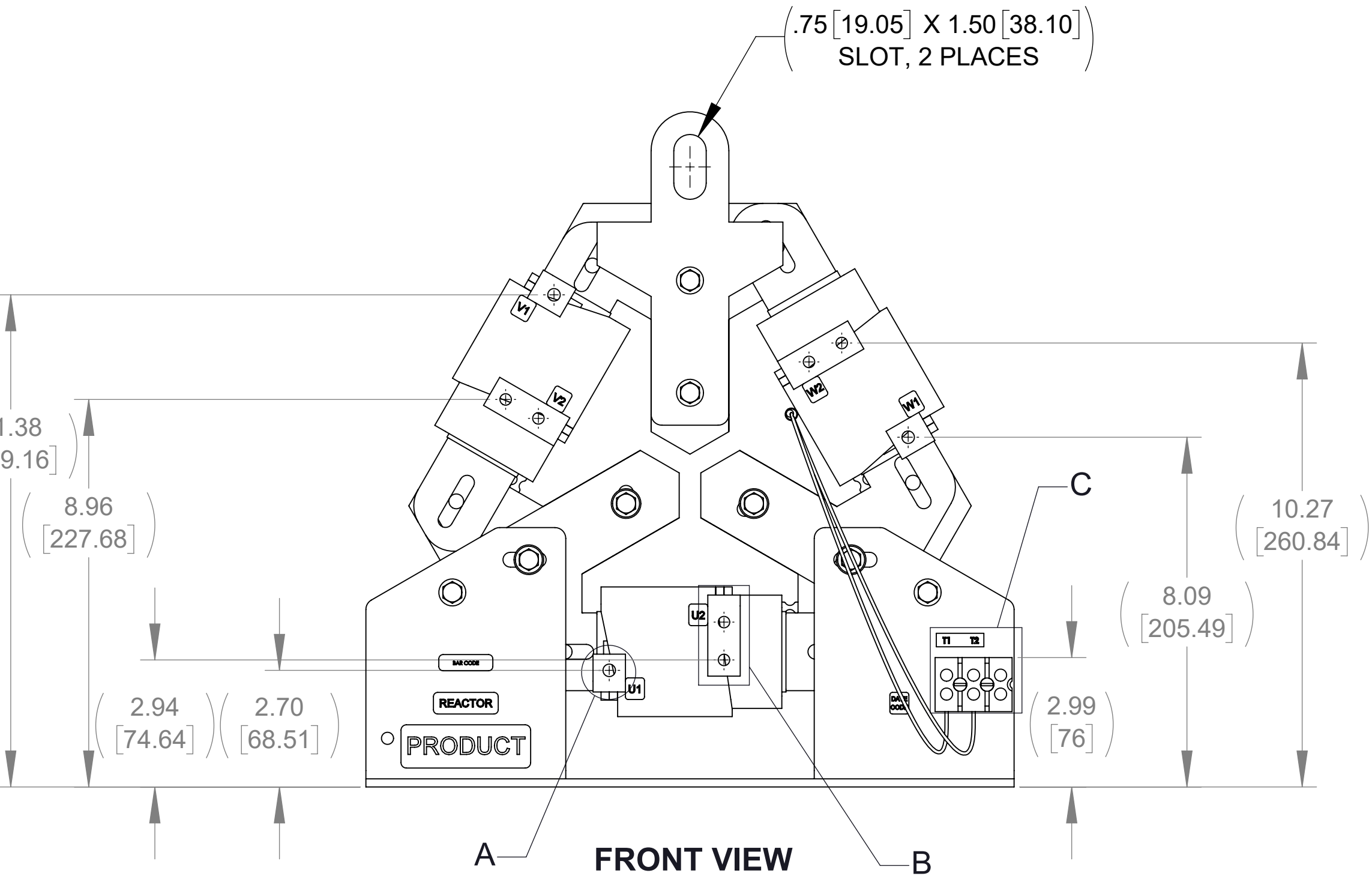
(.41 [10.32] X 1.50 [38.10])  
SLOT, 12 PLACES



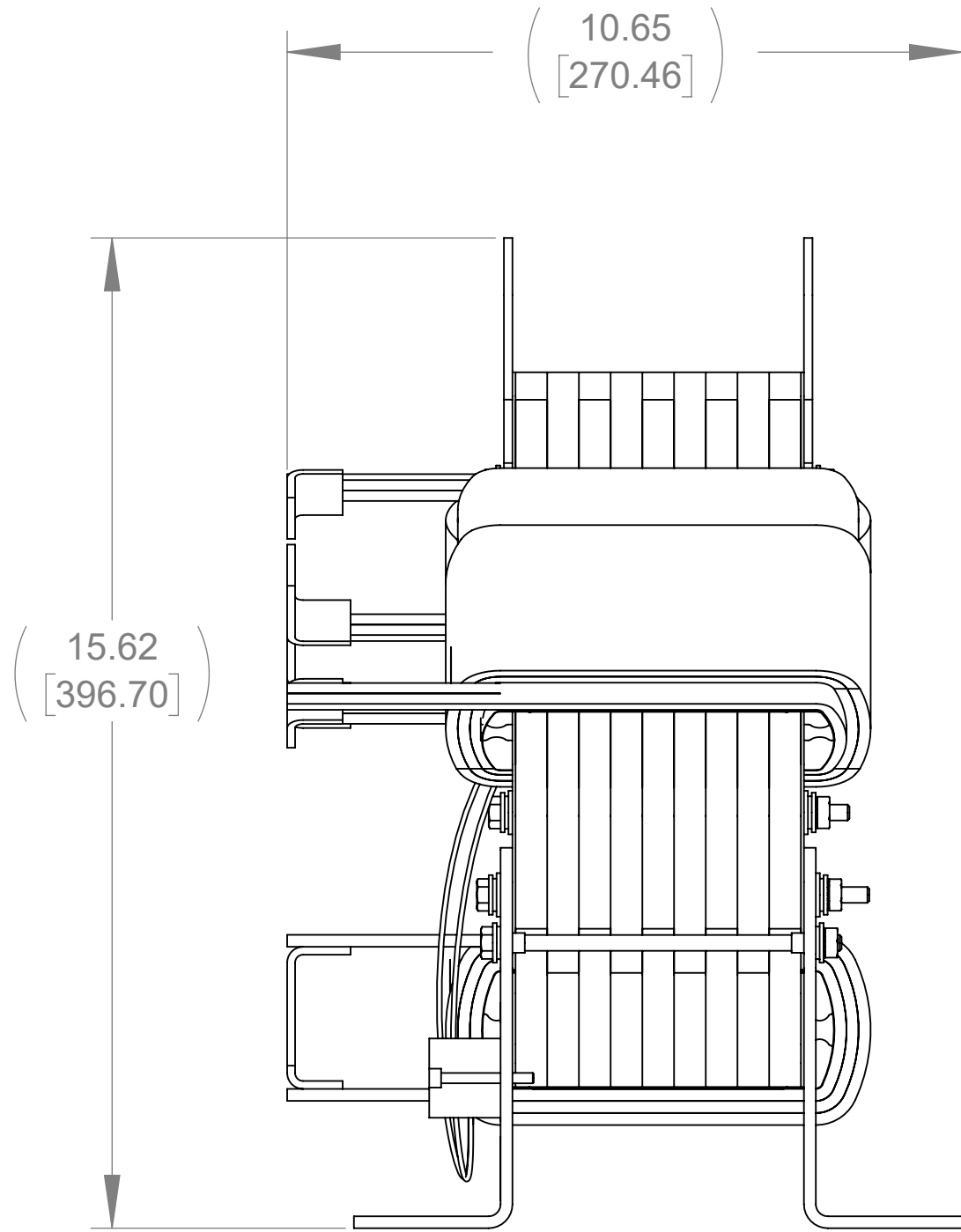
DETAIL C  
CUSTOMER CONNECTION  
DETAIL VIEW (THERMAL)



CUSTOMER CONNECTION  
DETAIL VIEW



FRONT VIEW



SIDE VIEW

NOTES:

1. TERMINAL WIRE RANGE: 4-18 AWG.
2. TERMINAL SCREW TIGHTENING TORQUE: 16 IN.LBS.
3. REFER TO USER MANUAL FOR COMPLETE INSTALLATION INSTRUCTIONS.
4. FILTER INCLUDES: CAP-516SW(QTY. 1) AND CMB-008(QTY. 1).

THE COMPONENT, PART OR ASSEMBLY DESCRIBED IN THIS DOCUMENT MUST COMPLY WITH THE EU(EUROPEAN UNION) DIRECTIVE RoHS2			MATERIAL		CONFIDENTIAL AND PROPRIETARY INFORMATION THIS DOCUMENT CONTAINS CONFIDENTIAL AND PROPRIETARY INFORMATION OF MTE CORPORATION AND MAY NOT BE USED, COPIED OR DISCLOSED TO OTHERS EXCEPT WITH THE AUTHORIZED WRITTEN PERMISSION OF MTE CORPORATION		
CONTAINS <0.1% OF ANY SVHC BY WEIGHT PER REACH REGULATION					DESCRIPTION		
UNLESS OTHERWISE SPECIFIED DIMENSIONS ARE IN INCHES [MM] TOLERANCES ARE:  ANGLES: ± 1 °  1 PLACE .X: ± .1 [2.5]  2 PLACE .XX: ± .03 [0.76]  3 PLACE .XXX: ± .010 [0.254]			DRAWN MN		SINEWAVE NEXUS FILTER 110A 480V 60Hz OPEN PANEL		
			CHECKED MN		DATE 11/07/19		
			APPROVED RH		DATE 11/14/19		
					SIZE D	DWG No. CD SWNM0110D	REV 01
					SCALE 3:8	SHEET 1 OF 1	

**MTE**  
POWER QUALITY. SOLVED.

N83 W13330 Leon Road  
Menomonee Falls, WI 53051 USA  
800.455.4683  
262.253.8200