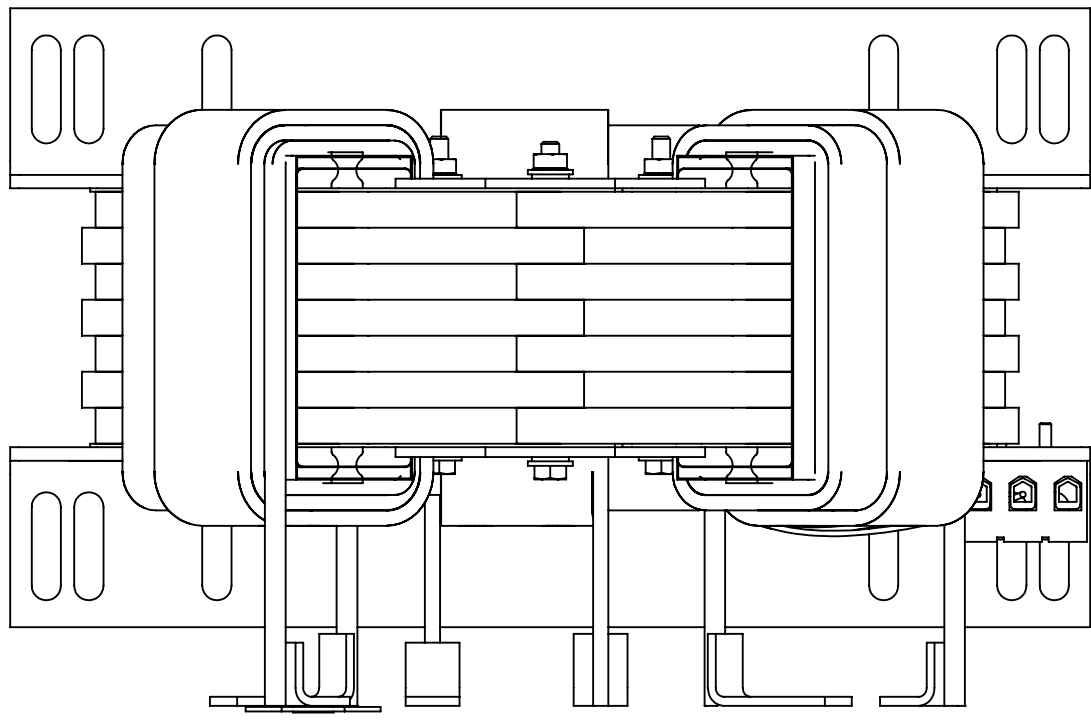
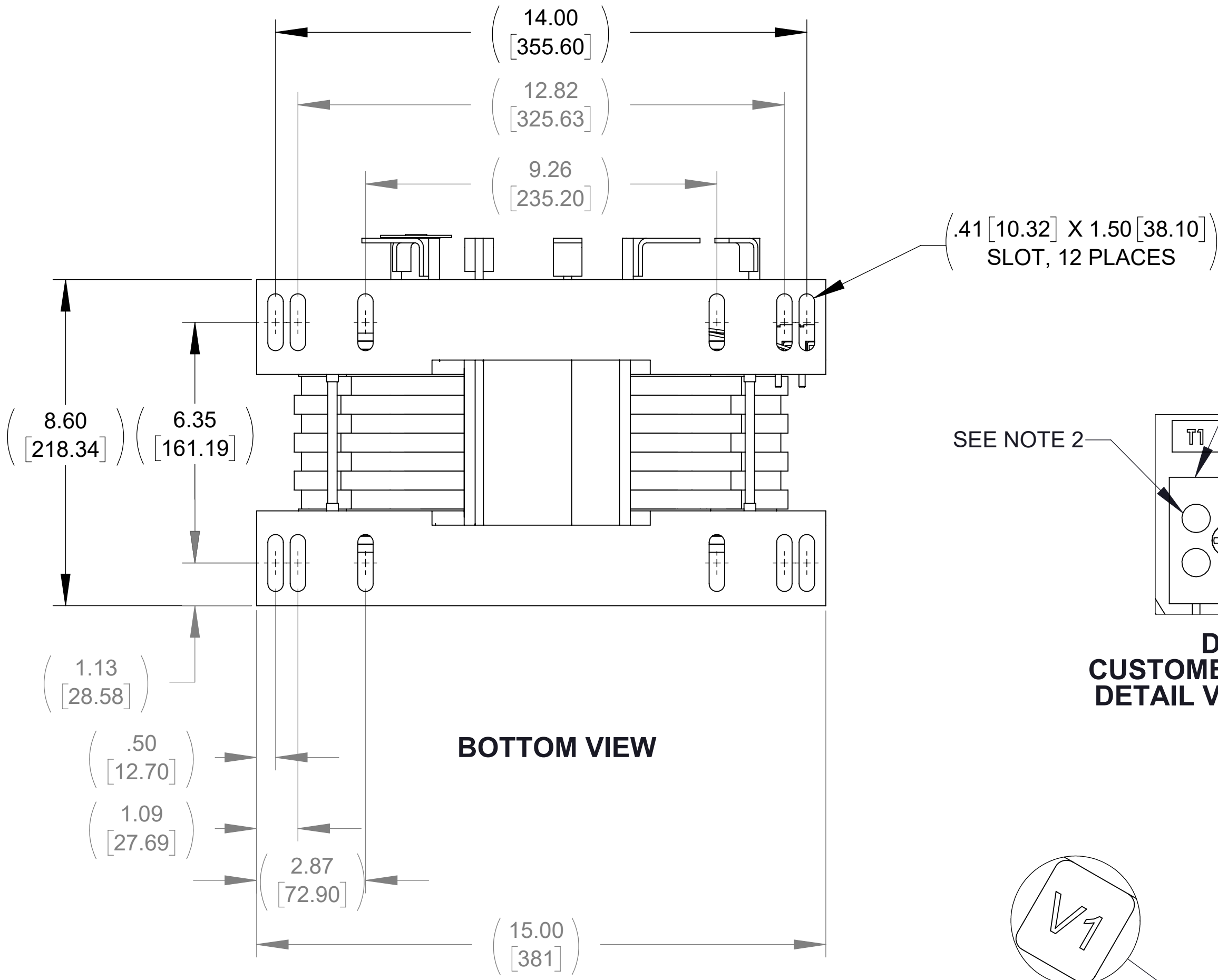


APPROX. WEIGHT  
(LBS)  
114

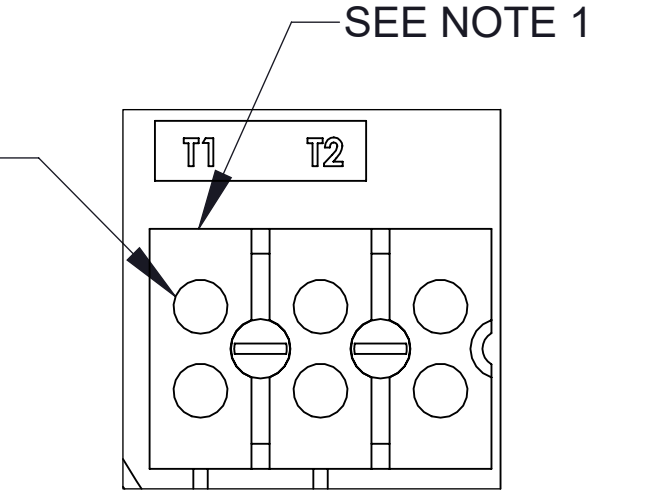
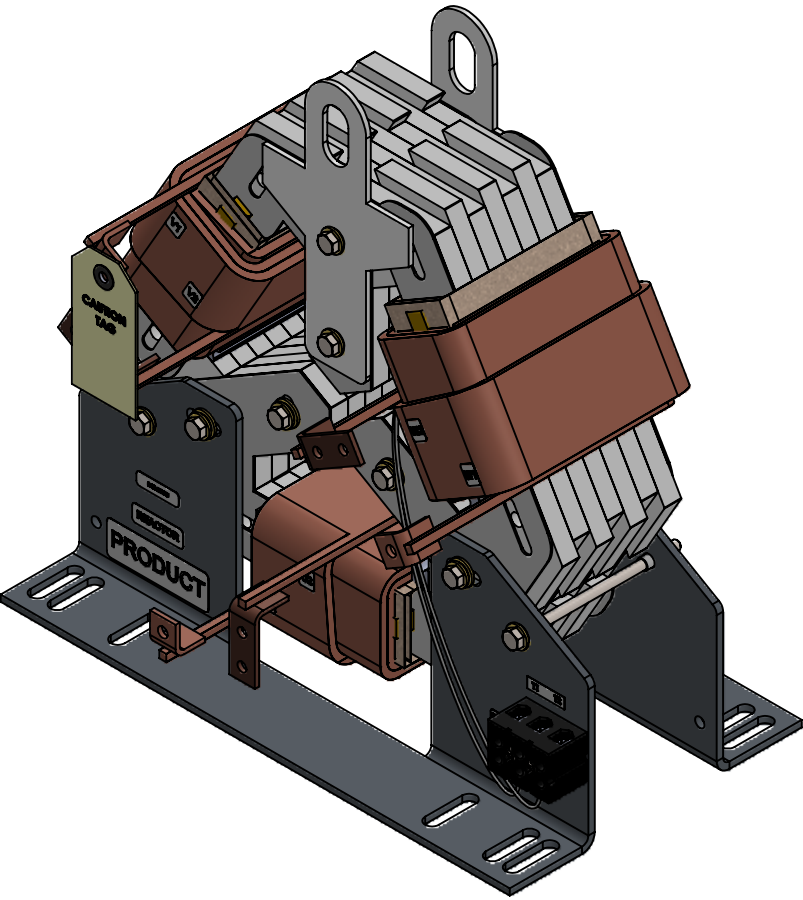
ECO No	DESCRIPTION	REV BY	DATE
M12085	REPLACE CAPPANEL W/CAP, REPLACE CMP W/CMB	MN	11/08/19



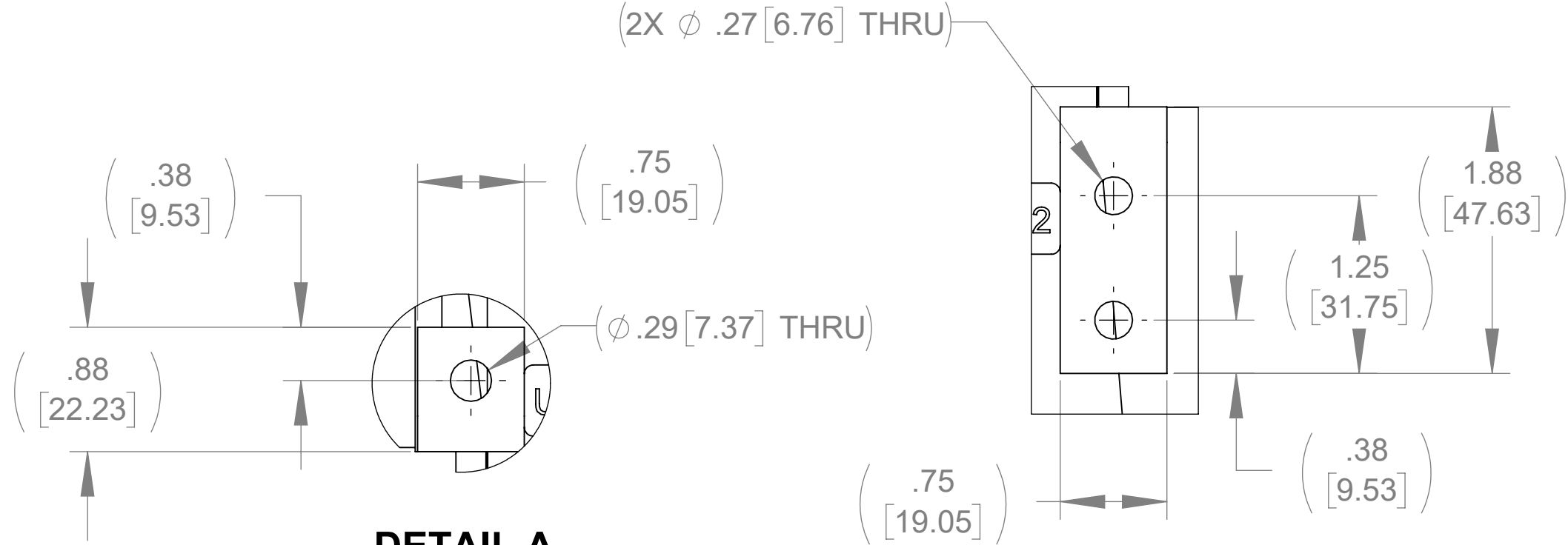
TOP VIEW



BOTTOM VIEW

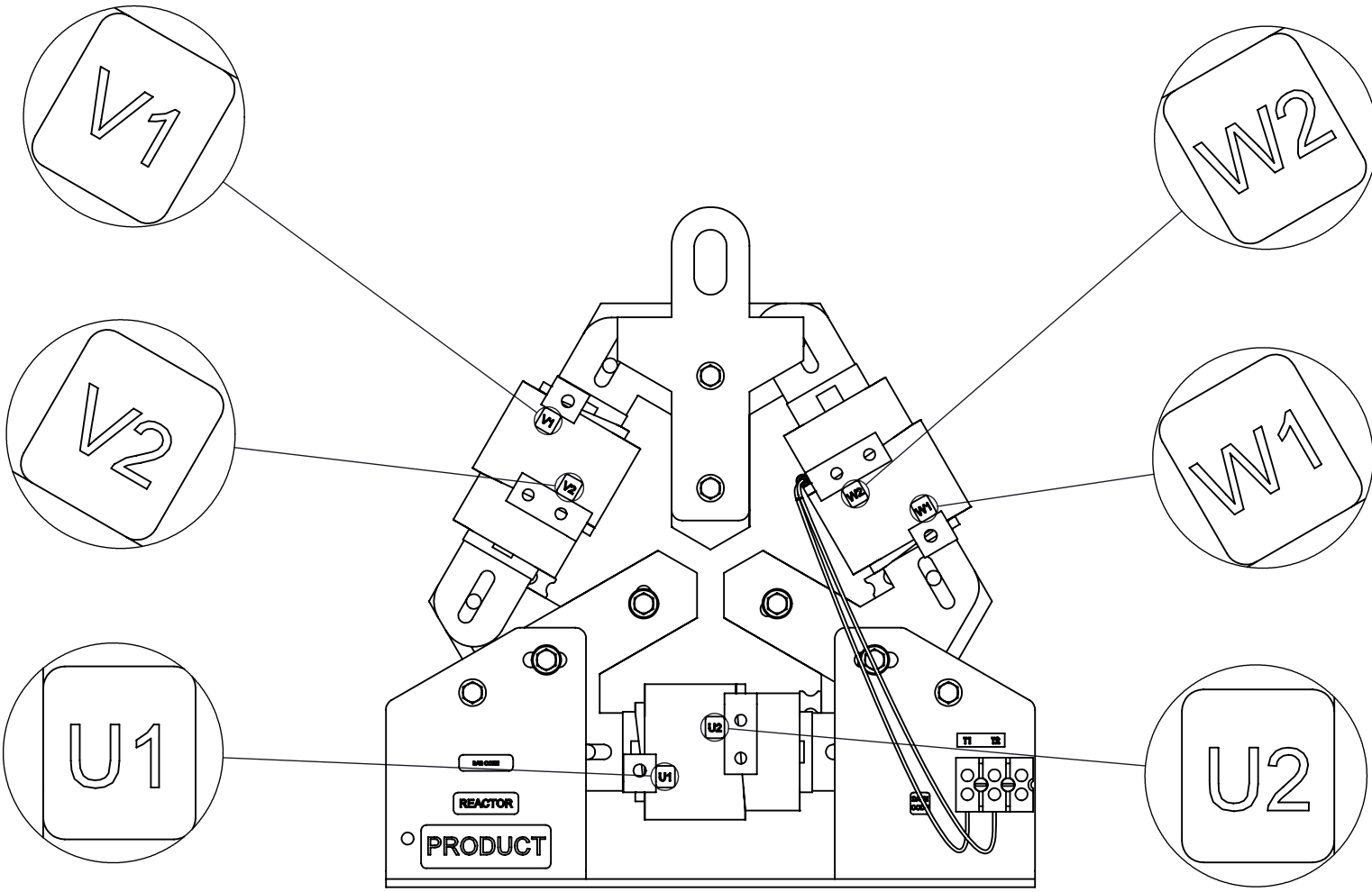


DETAIL C  
CUSTOMER CONNECTION  
DETAIL VIEW (THERMAL)

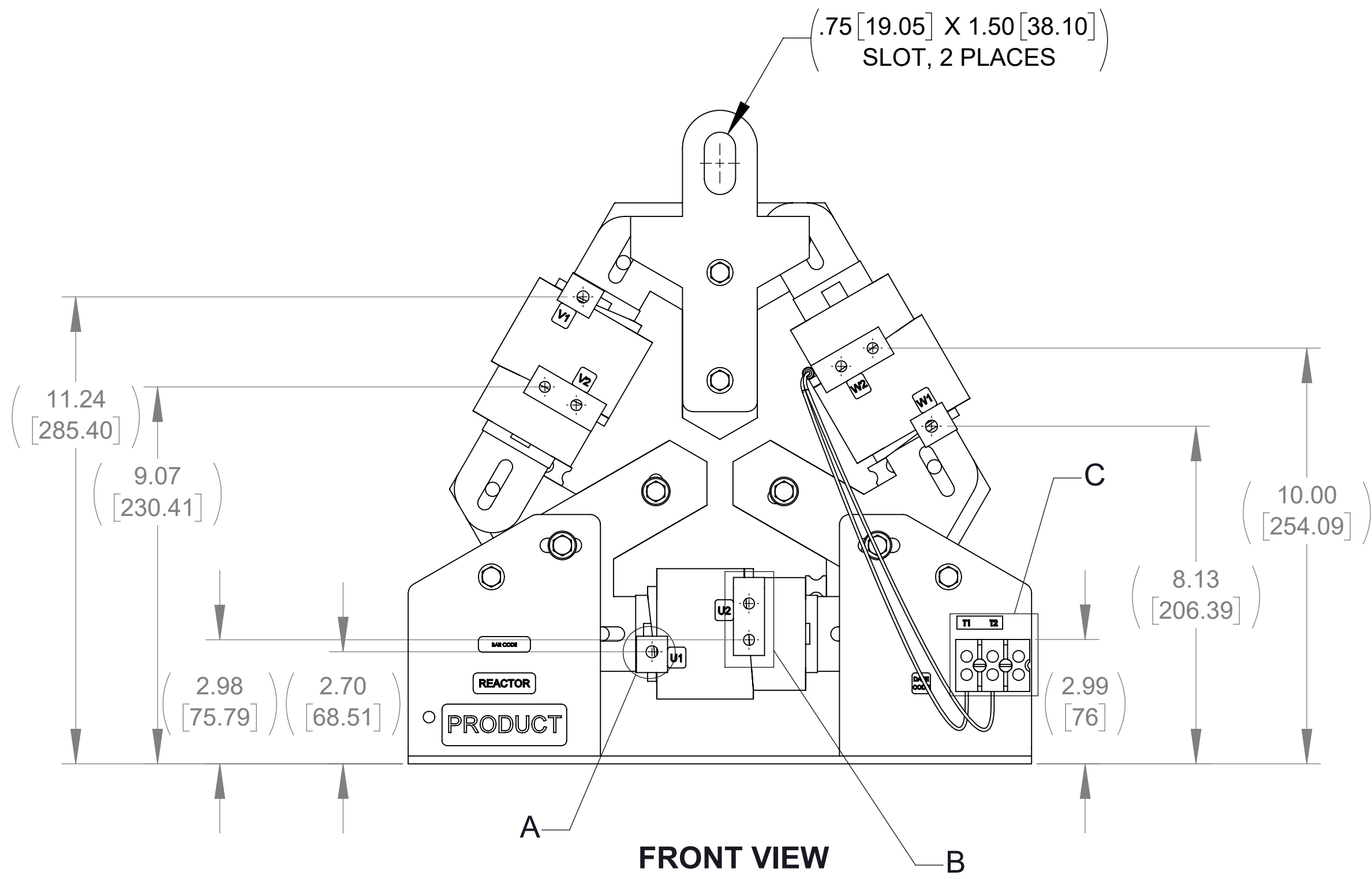


DETAIL A  
(3 PLACES)

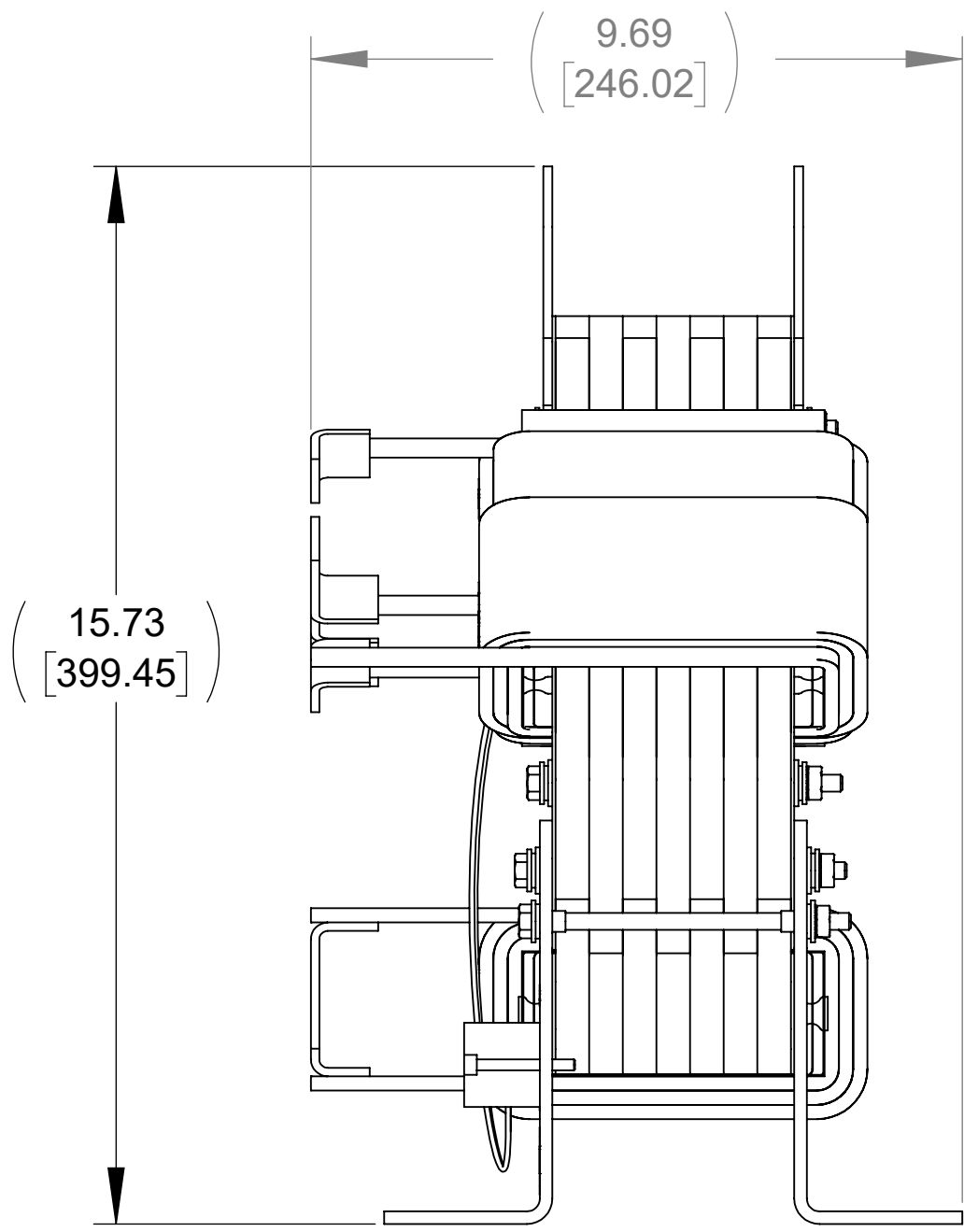
DETAIL B  
(3 PLACES)



CUSTOMER CONNECTION  
DETAIL VIEW



FRONT VIEW



SIDE VIEW

NOTES:

1. TERMINAL WIRE RANGE: 4-18 AWG.
2. TERMINAL SCREW TIGHTENING TORQUE: 16 IN.LBS.
3. REFER TO USER MANUAL FOR COMPLETE INSTALLATION INSTRUCTIONS.
4. FILTER INCLUDES: CAP-529SW(QTY. 1) AND CMB-005(QTY. 1).

THE COMPONENT, PART OR ASSEMBLY DESCRIBED IN THIS DOCUMENT MUST COMPLY WITH THE EU(EUROPEAN UNION) DIRECTIVE RoHS2		MATERIAL		CONFIDENTIAL AND PROPRIETARY INFORMATION THIS DOCUMENT CONTAINS CONFIDENTIAL AND PROPRIETARY INFORMATION OF MTE CORPORATION AND MAY NOT BE USED, COPIED OR DISCLOSED TO OTHERS EXCEPT WITH THE AUTHORIZED WRITTEN PERMISSION OF MTE CORPORATION	
CONTAINS <0.1% OF ANY SVHC BY WEIGHT PER REACH REGULATION				DESCRIPTION	
UNLESS OTHERWISE SPECIFIED DIMENSIONS ARE IN INCHES [MM] TOLERANCES ARE:  ANGLES: ± 1 °  1 PLACE .X: ± .1 [2.5]  2 PLACE .XX: ± .03 [0.76]  3 PLACE .XXX: ± .010 [0.254]		<b>MTE</b> POWER QUALITY. SOLVED.  N83 W13330 Leon Road Menomonee Falls, WI 53051 USA 800.455.4683 262.253.8200		SINEWAVE NEXUS FILTER 65A 600V 60Hz OPEN PANEL	
DRAWN MN		DATE 06/21/19		SIZE D	REV 01
CHECKED MN		DATE 11/08/19		DWG No. CD SWNM0065E	
APPROVED RH		DATE 11/14/19		SCALE 3:8	SHEET 1 OF 1