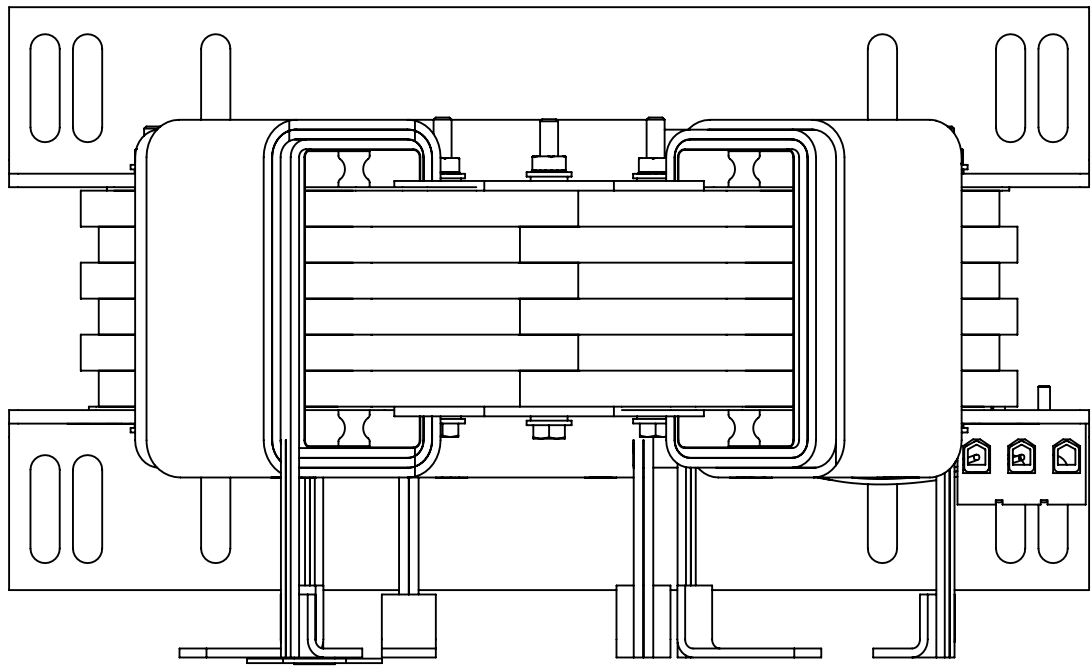
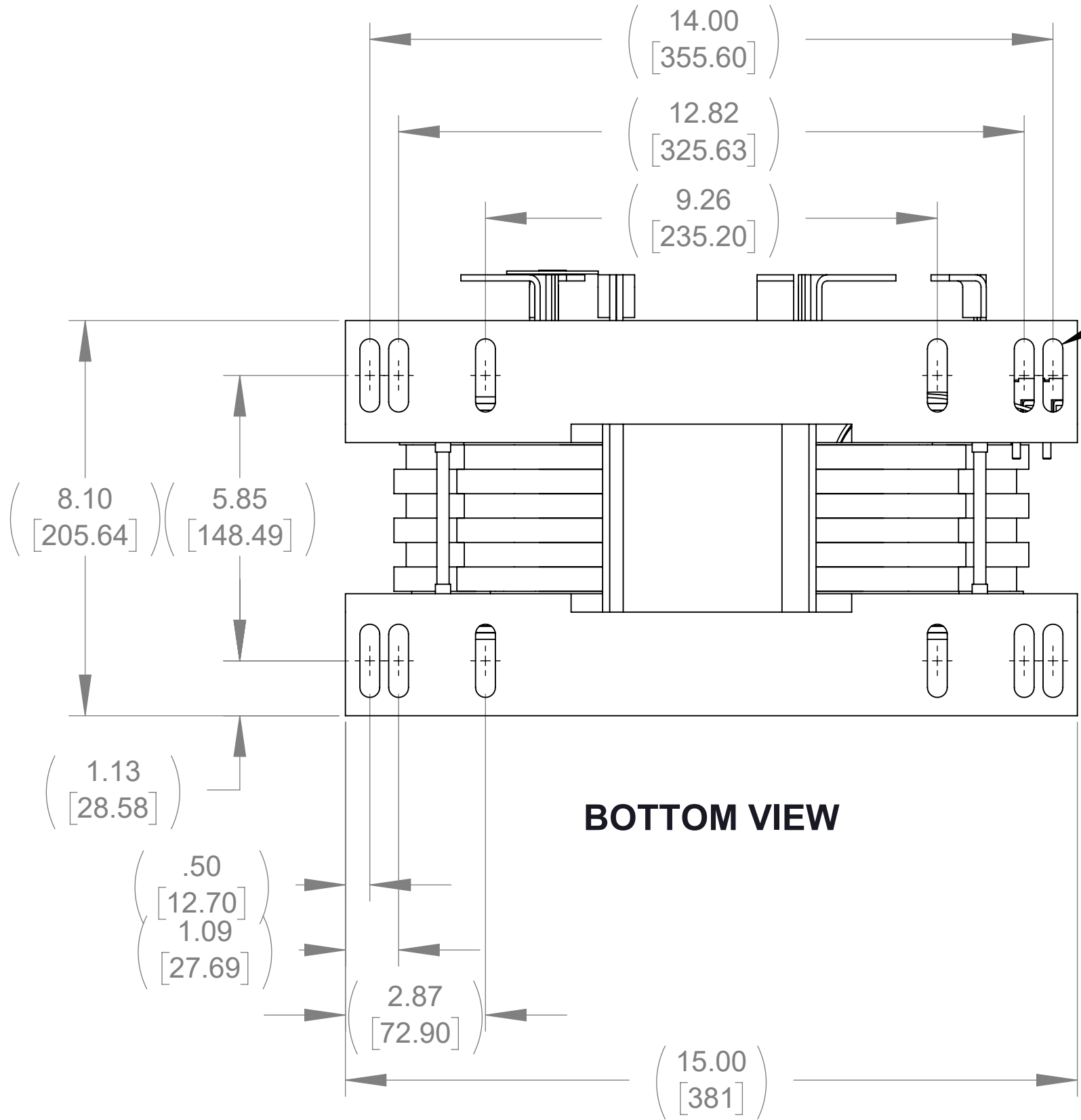


APPROX. WEIGHT
(LBS)
94

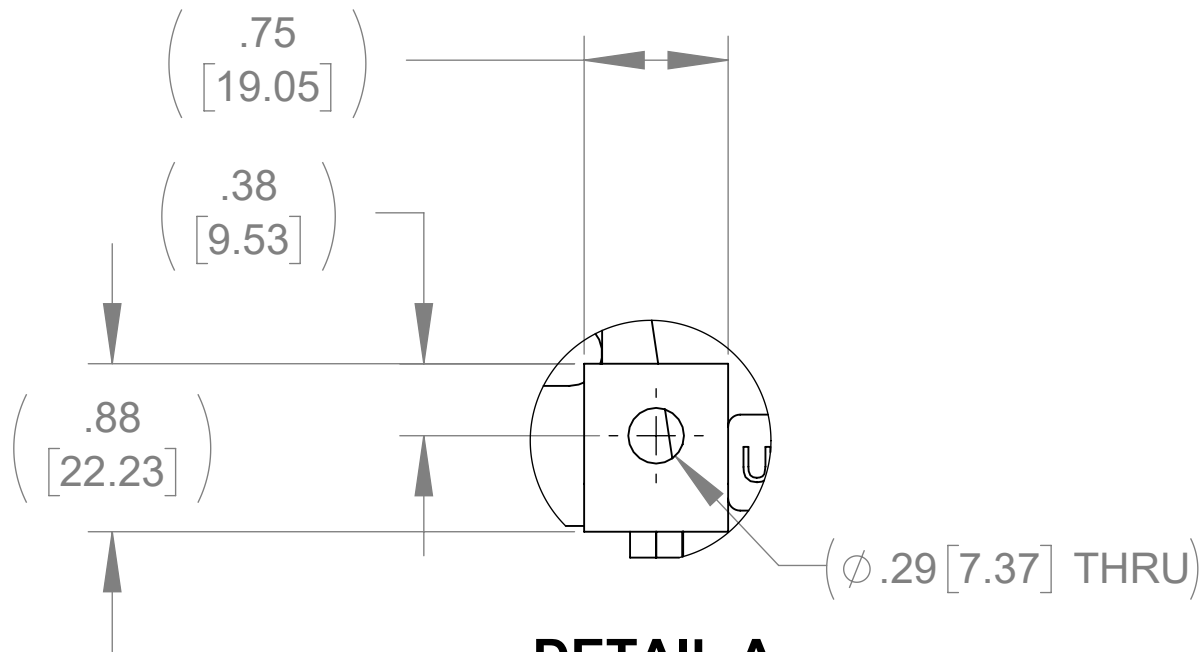
ECO No	DESCRIPTION	REV BY	DATE
M12075	REPLACED CAPANEL W/CAP AND CMP W/CMB	MN	11/07/19



TOP VIEW

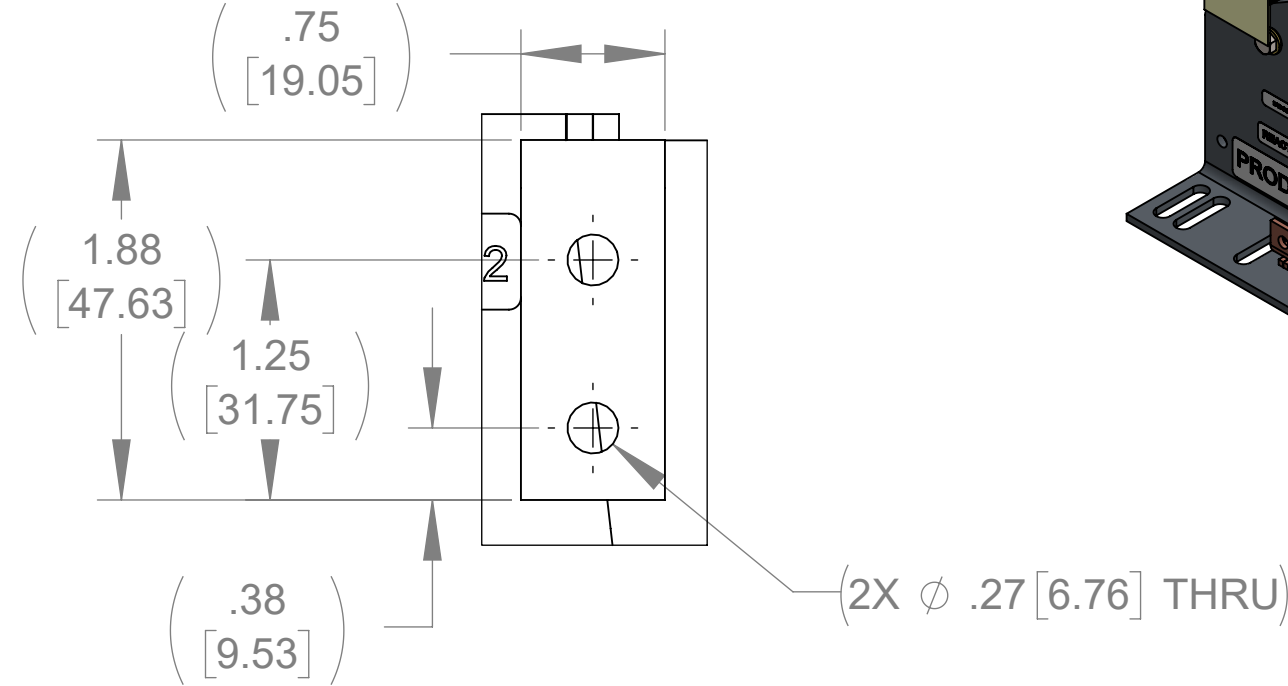


BOTTOM VIEW

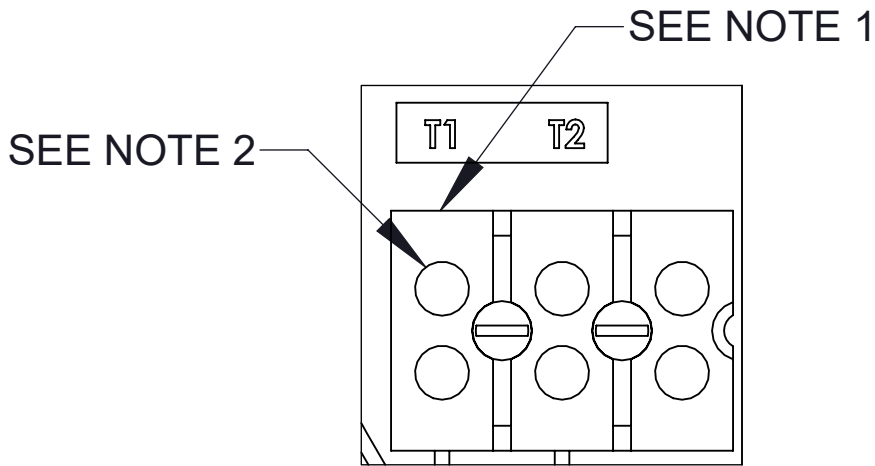


DETAIL A
(3 PLACES)

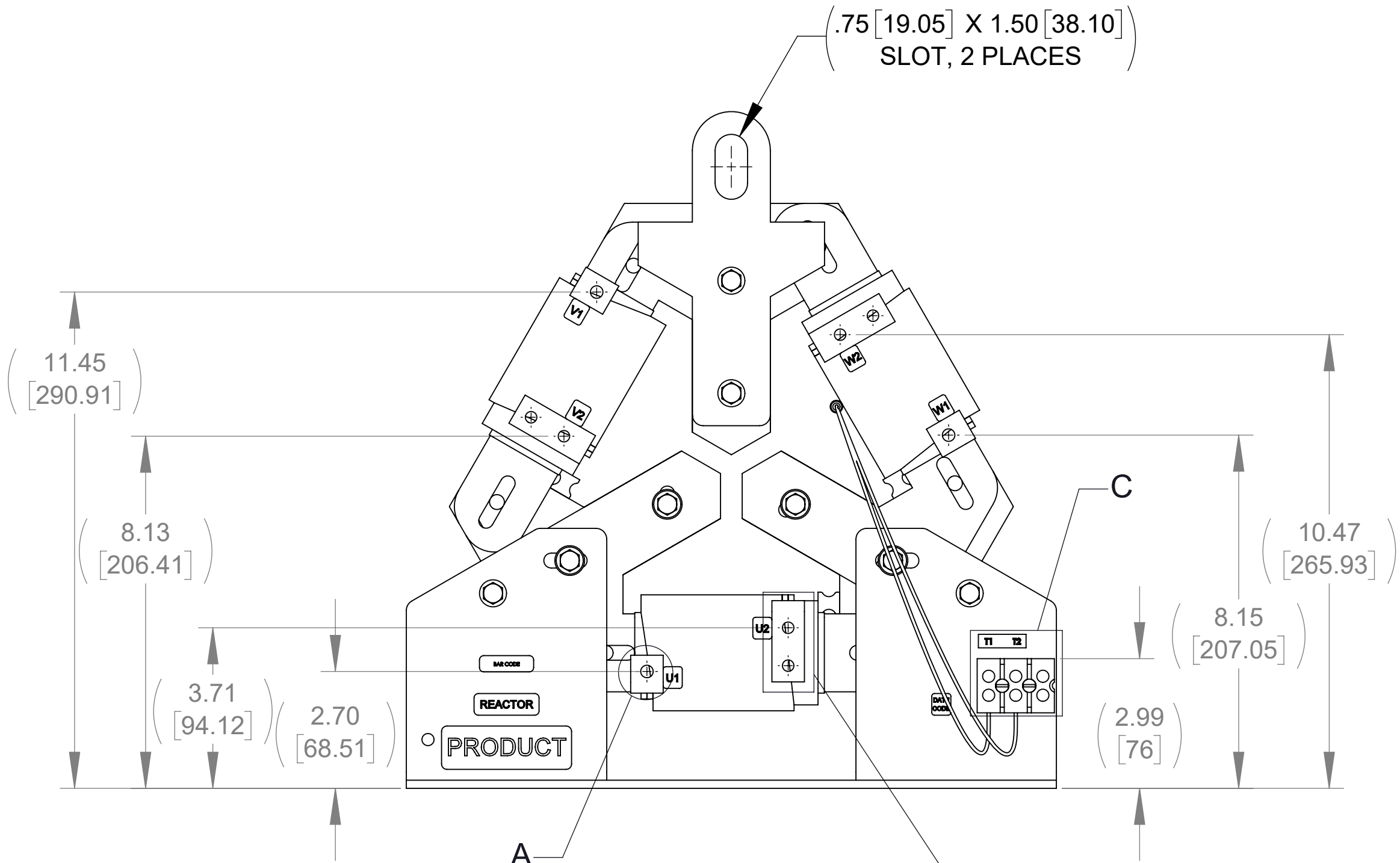
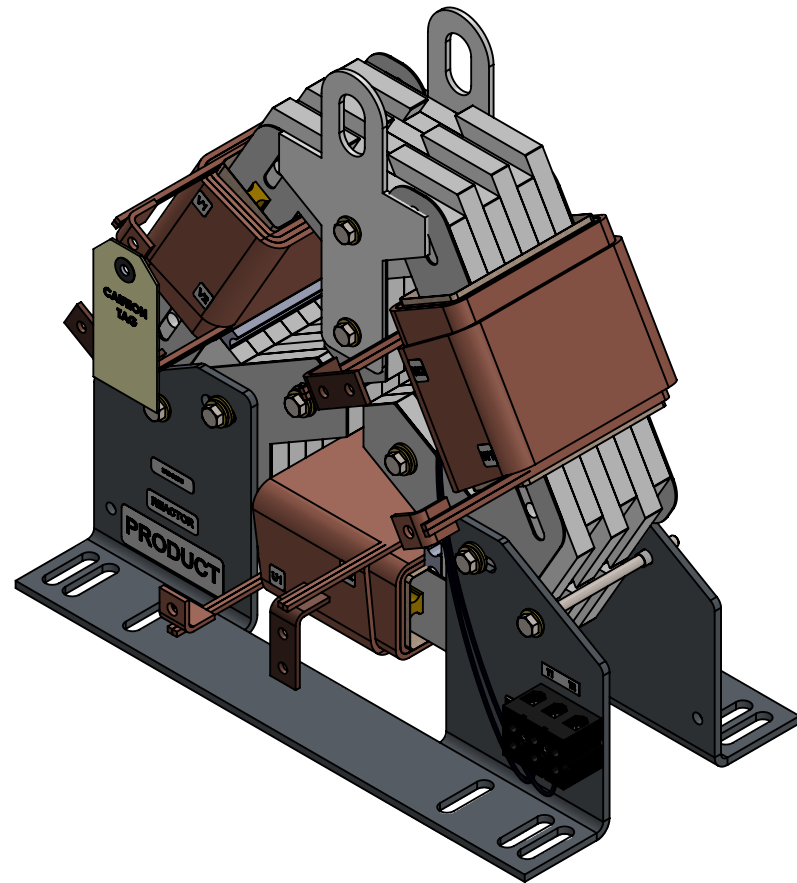
(.41 [10.32] X 1.50 [38.10])
SLOT, 12 PLACES



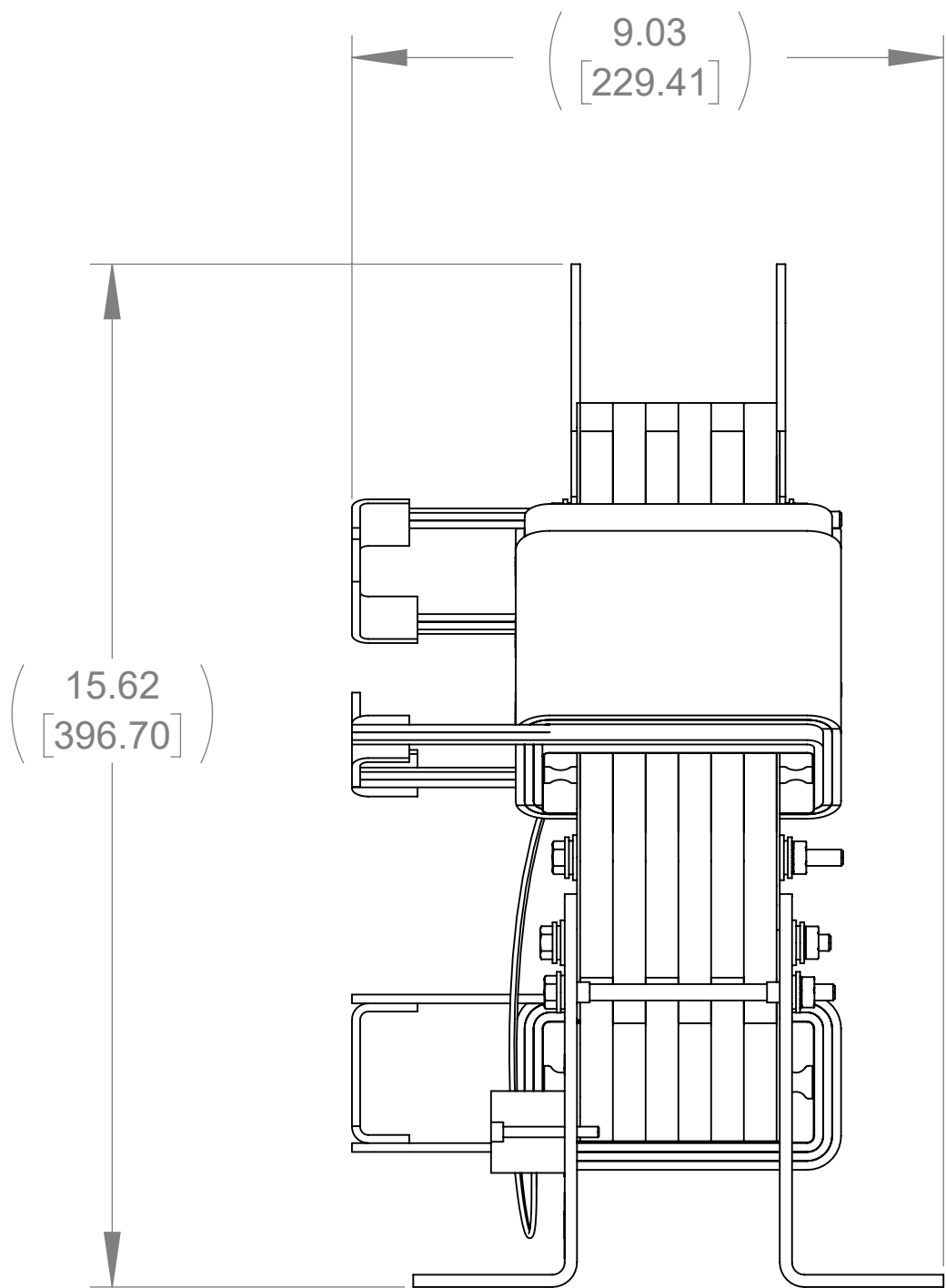
DETAIL B
(3 PLACES)



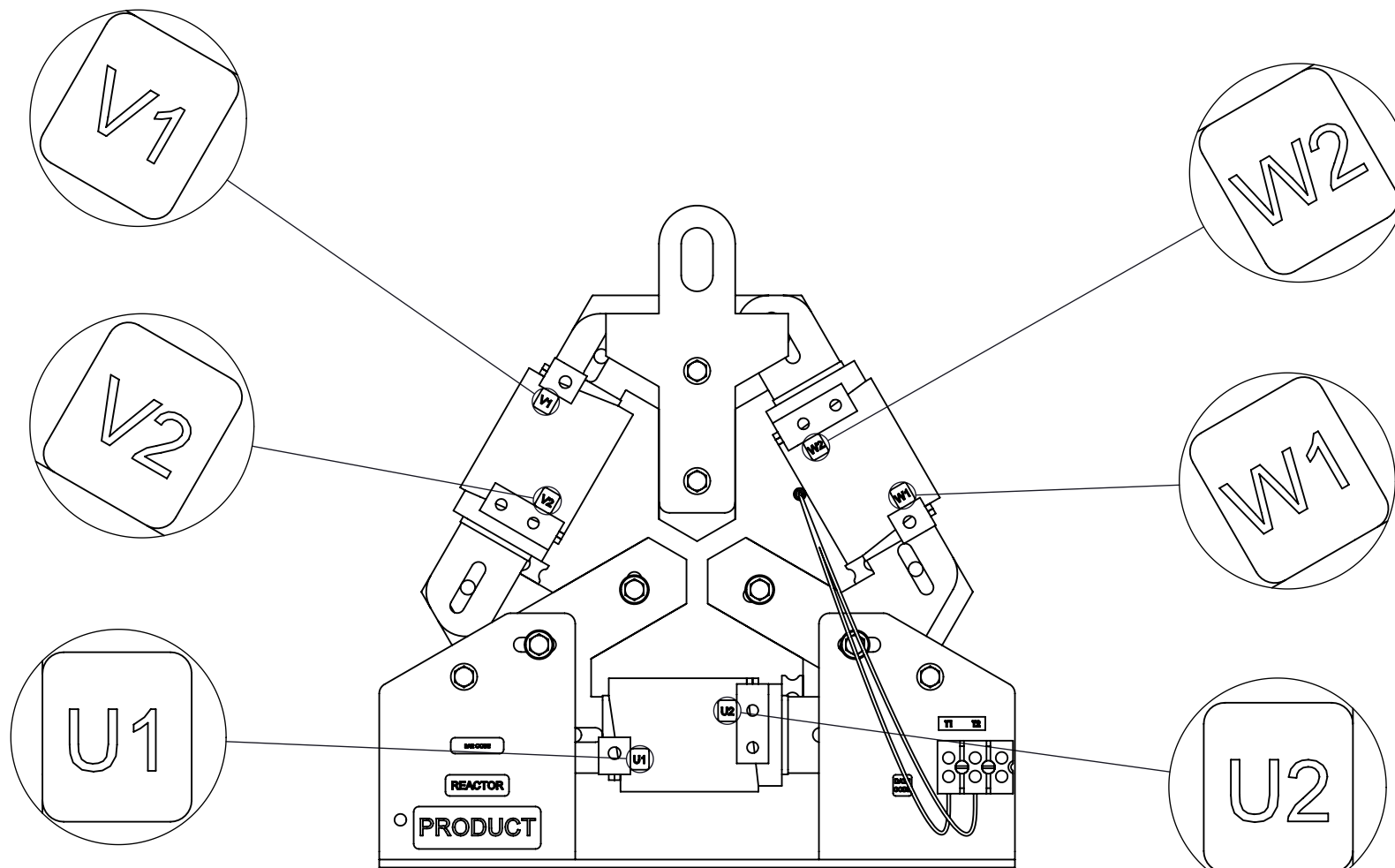
DETAIL C
CUSTOMER CONNECTION
DETAIL VIEW (THERMAL)



FRONT VIEW




SIDE VIEW



CUSTOMER CONNECTION
DETAIL VIEW

NOTES:

1. TERMINAL WIRE RANGE: 4-18 AWG.
2. TERMINAL SCREW TIGHTENING TORQUE: 16 IN.LBS.
3. REFER TO USER MANUAL FOR COMPLETE INSTALLATION INSTRUCTIONS.
4. FILTER INCLUDES: CAP-514SW(QTY. 1) AND CMB-007(QTY. 1).

THE COMPONENT, PART OR ASSEMBLY DESCRIBED IN THIS DOCUMENT MUST COMPLY WITH THE EU(EUROPEAN UNION) DIRECTIVE RoHS2		MATERIAL		CONFIDENTIAL AND PROPRIETARY INFORMATION THIS DOCUMENT CONTAINS CONFIDENTIAL AND PROPRIETARY INFORMATION OF MTE CORPORATION AND MAY NOT BE USED, COPIED OR DISCLOSED TO OTHERS EXCEPT WITH THE AUTHORIZED WRITTEN PERMISSION OF MTE CORPORATION			
CONTAINS <0.1% OF ANY SVHC BY WEIGHT PER REACH REGULATION				DESCRIPTION			
UNLESS OTHERWISE SPECIFIED DIMENSIONS ARE IN INCHES [MM] TOLERANCES ARE: ANGLES: ± 1 ° 1 PLACE .X: ± .1 [2.5] 2 PLACE .XX: ± .03 [0.76] 3 PLACE .XXX: ± .010 [0.254]				SINEWAVE NEXUS FILTER 65A 480V 60Hz OPEN PANEL			
		N83 W13330 Leon Road Menomonee Falls, WI 53051 USA 800.455-4683 262.253.8200		DRAWN		DATE	
				MN		04/10/19	
				CHECKED		DATE	
				MN		11/07/19	
				APPROVED		DATE	
				RH		11/14/19	
				SIZE		DWG No.	
				D		CD SWNM0065D	
				SCALE		REV	
				3:8		01	
				SHEET 1 OF 1			