

APPROX. WEIGHT
(LBS)
193

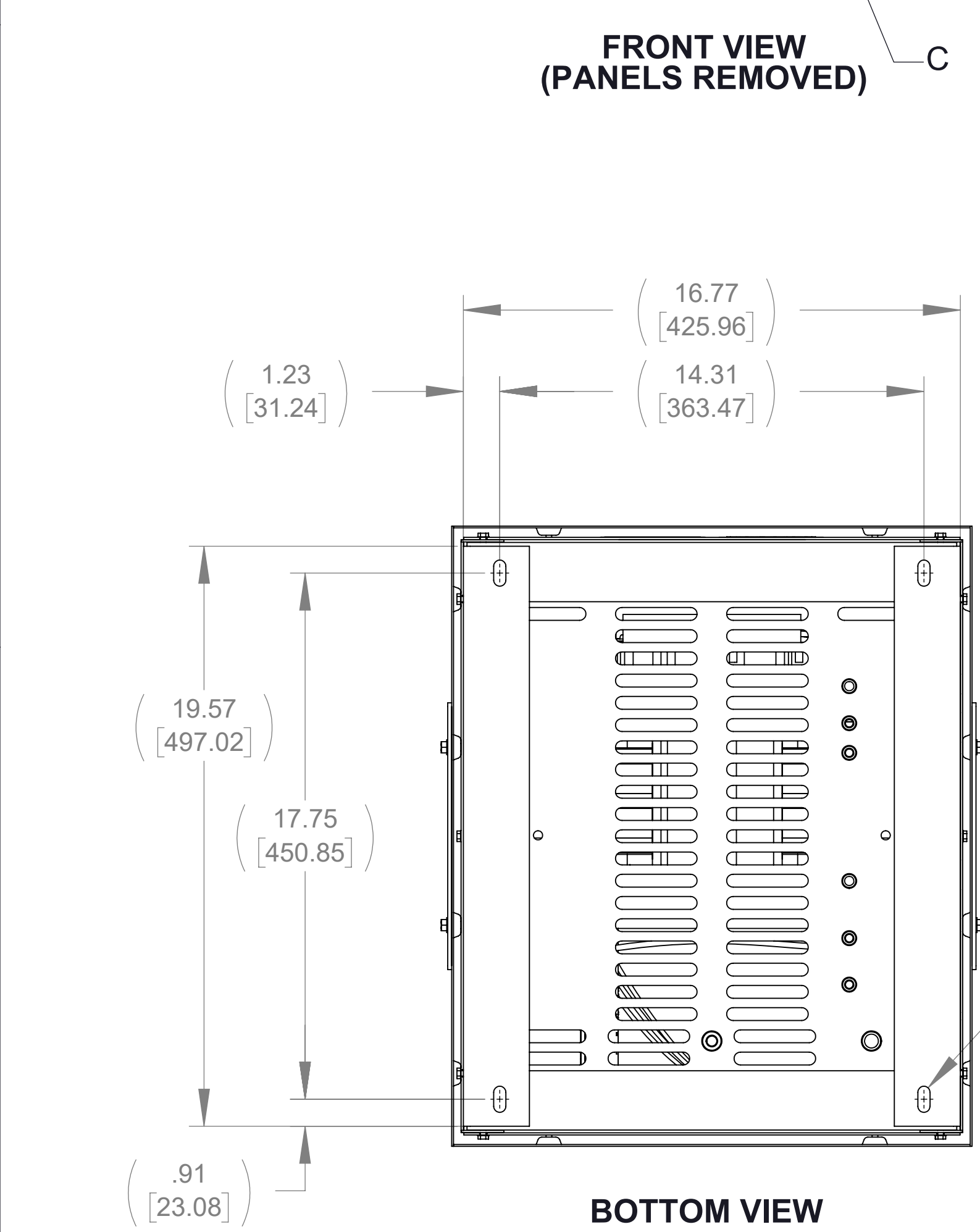
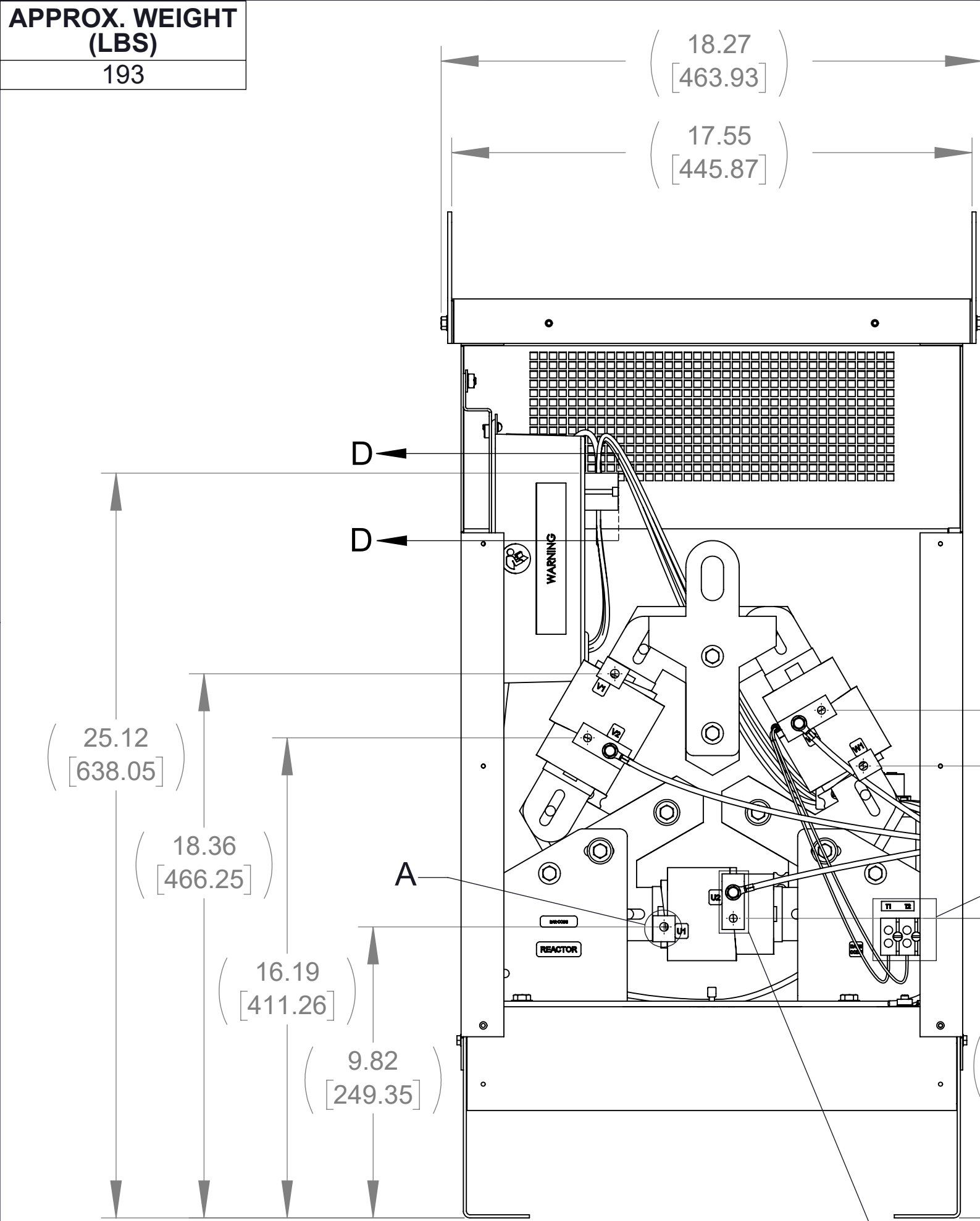
ECO No	DESCRIPTION	REV BY	DATE
M12085	CHANGE TO CAB-17, REPLACE CMP W/CMB, REPLACE CAPPANEL W/CAP	MN	11/08/19

D

C

B

A

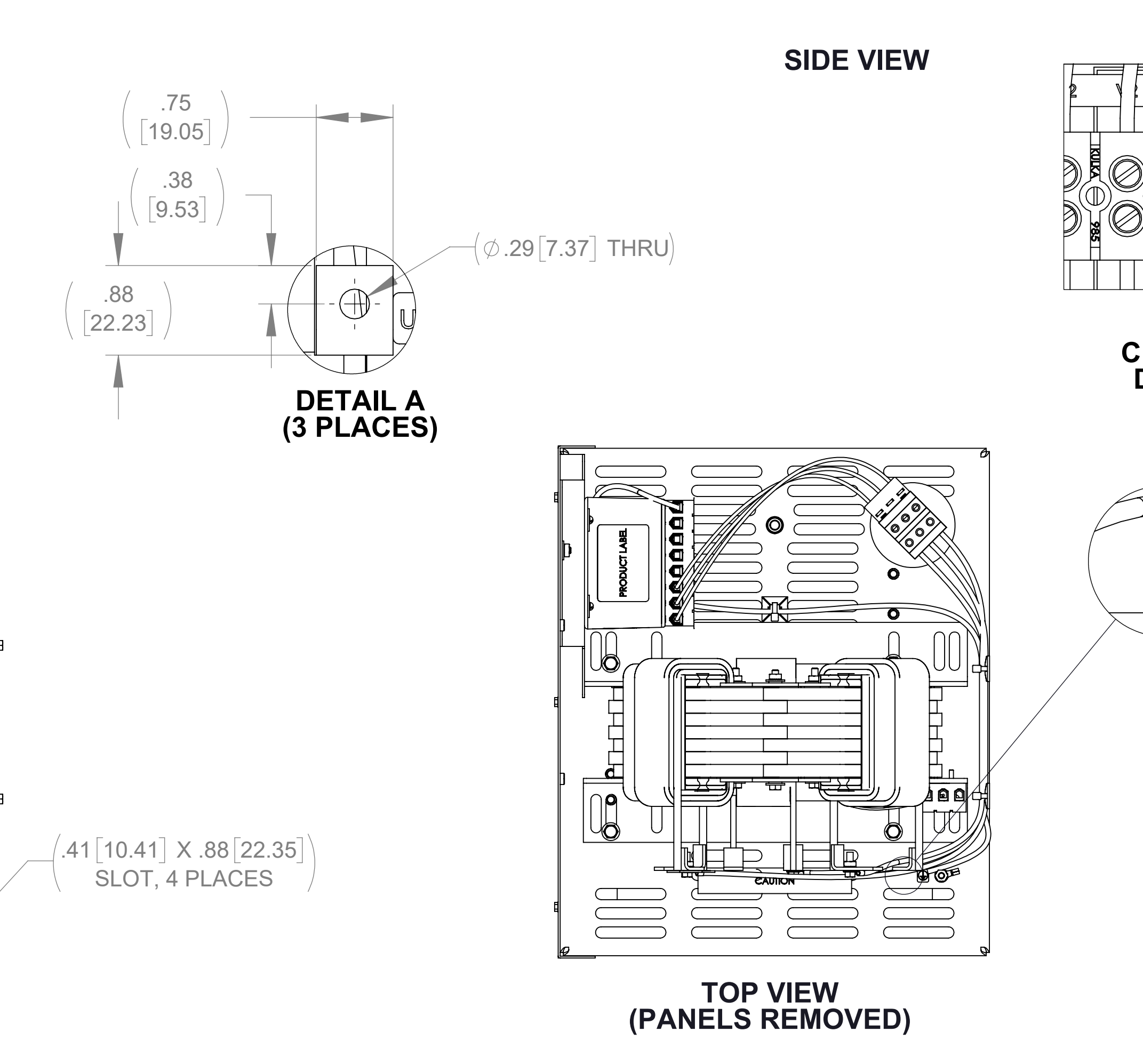
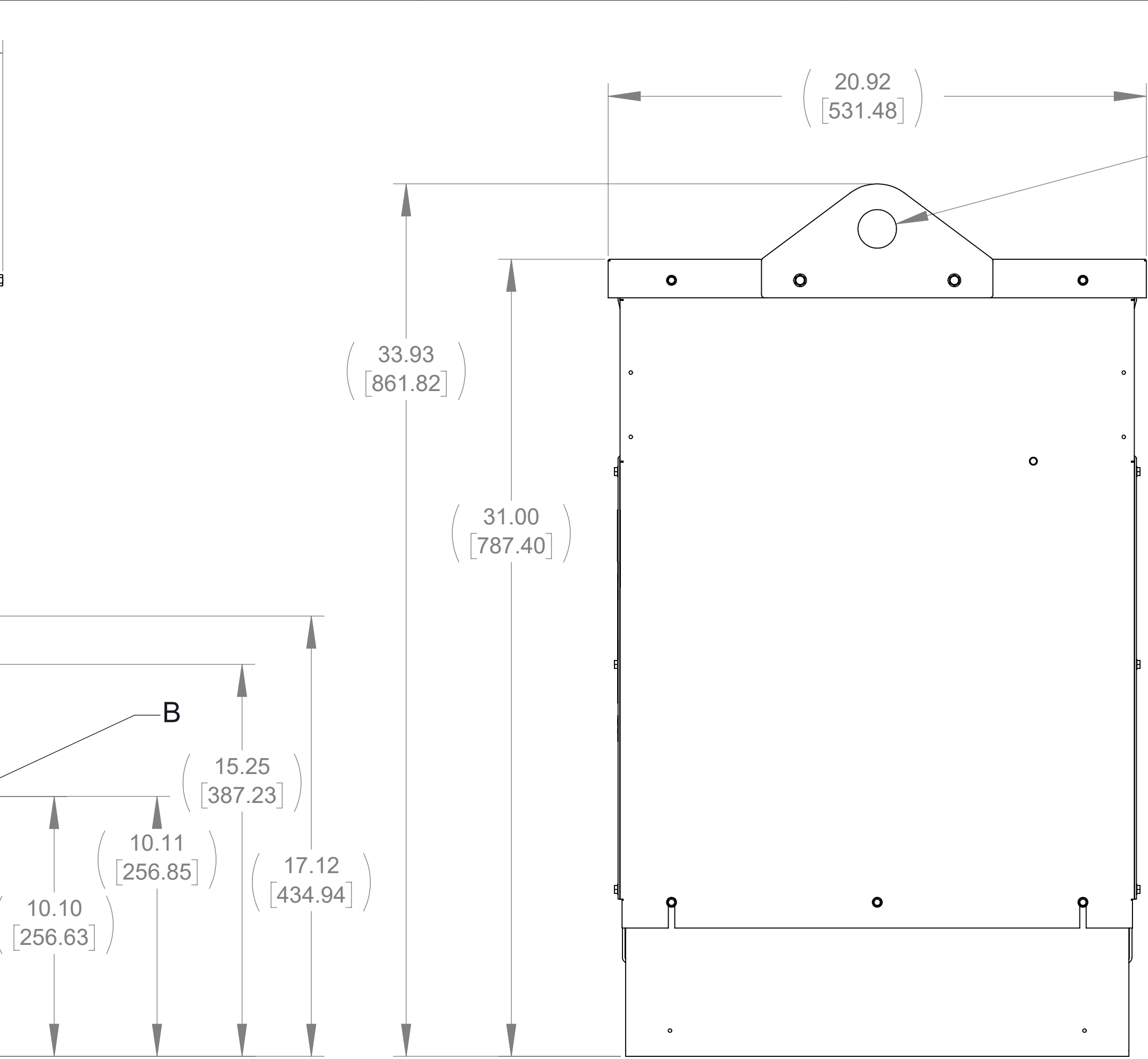


D

C

B

A

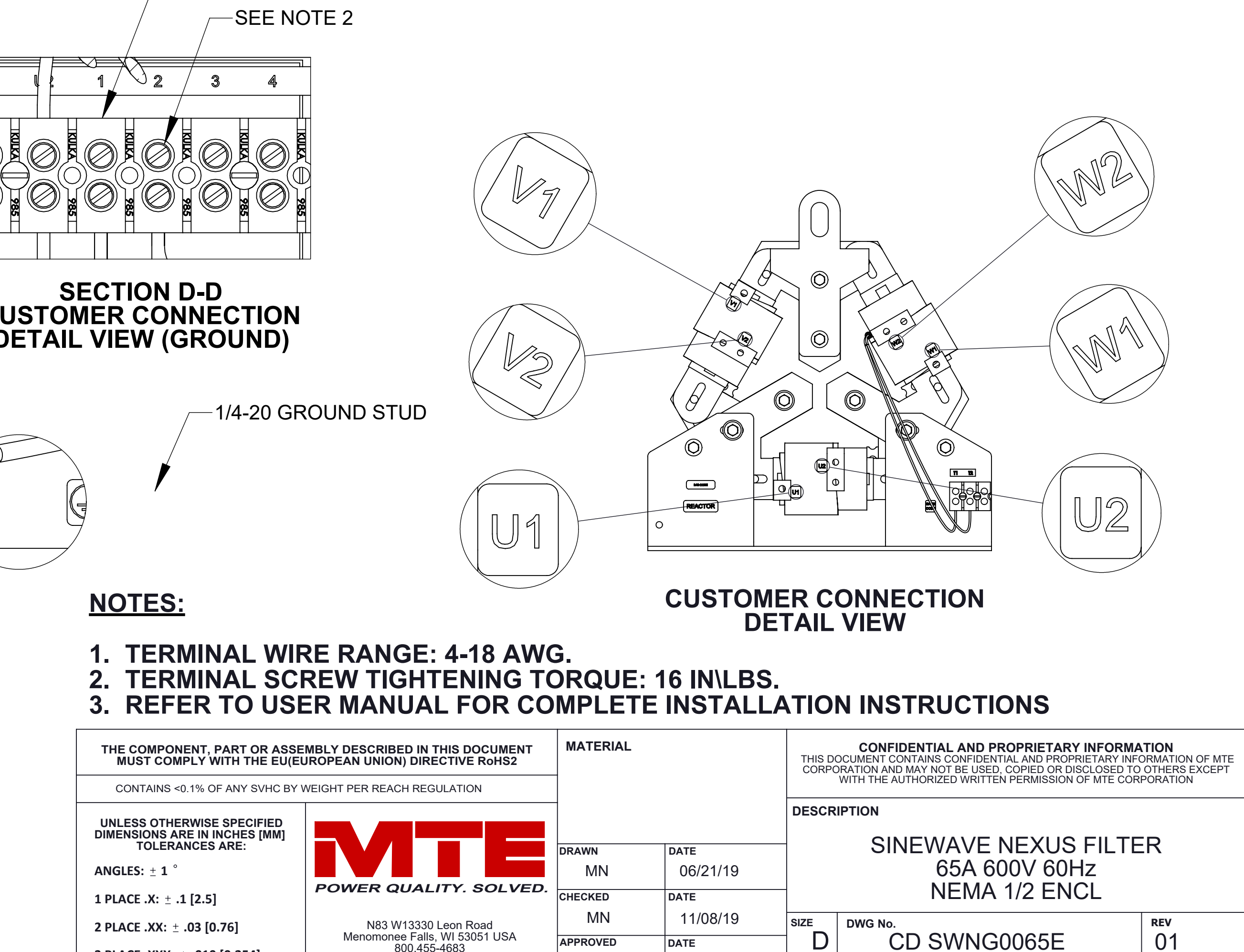
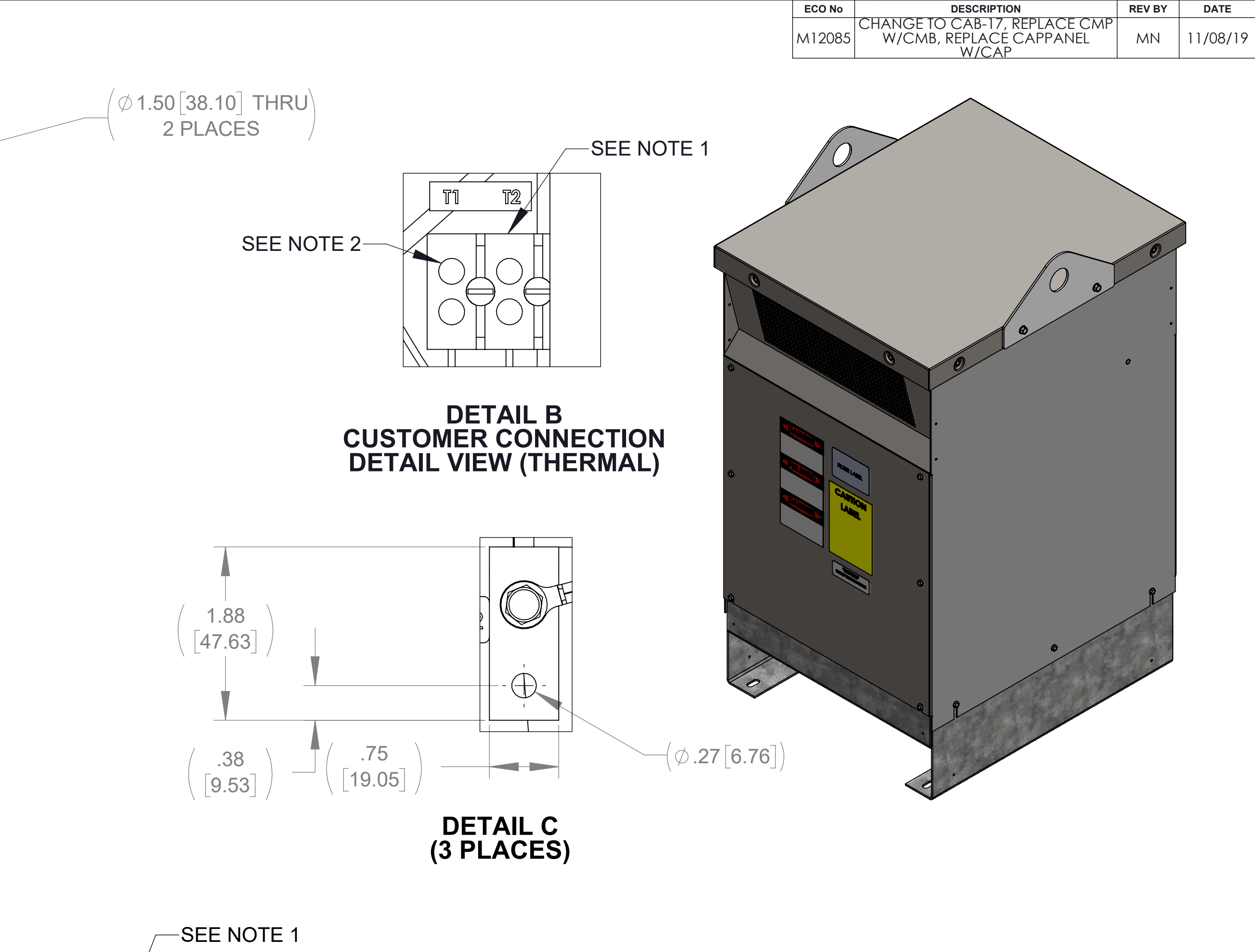


D

C

B

A



NOTES:

1. TERMINAL WIRE RANGE: 4-18 AWG.
2. TERMINAL SCREW TIGHTENING TORQUE: 16 IN/LBS.
3. REFER TO USER MANUAL FOR COMPLETE INSTALLATION INSTRUCTIONS

THE COMPONENT, PART OR ASSEMBLY DESCRIBED IN THIS DOCUMENT MUST COMPLY WITH THE EU(EUROPEAN UNION) DIRECTIVE RoHS2		MATERIAL		CONFIDENTIAL AND PROPRIETARY INFORMATION THIS DOCUMENT CONTAINS CONFIDENTIAL AND PROPRIETARY INFORMATION OF MTE CORPORATION AND MAY NOT BE USED, COPIED OR DISCLOSED TO OTHERS EXCEPT WITH THE AUTHORIZED WRITTEN PERMISSION OF MTE CORPORATION	
CONTAINS <0.1% OF ANY SVHC BY WEIGHT PER REACH REGULATION				DESCRIPTION	
UNLESS OTHERWISE SPECIFIED DIMENSIONS ARE IN INCHES [MM] TOLERANCES ARE:				SINEWAVE NEXUS FILTER 65A 600V 60Hz NEMA 1/2 ENCL	
ANGLES: ± 1 °				SIZE	
1 PLACE .X: ± .1 [2.5]				D	
2 PLACE .XX: ± .03 [0.76]				DWG No.	
3 PLACE .XXX: ± .010 [0.254]				CD SWNG0065E	
				REV	
				01	
				SCALE	
				1:4	
				SHEET 1 OF 1	