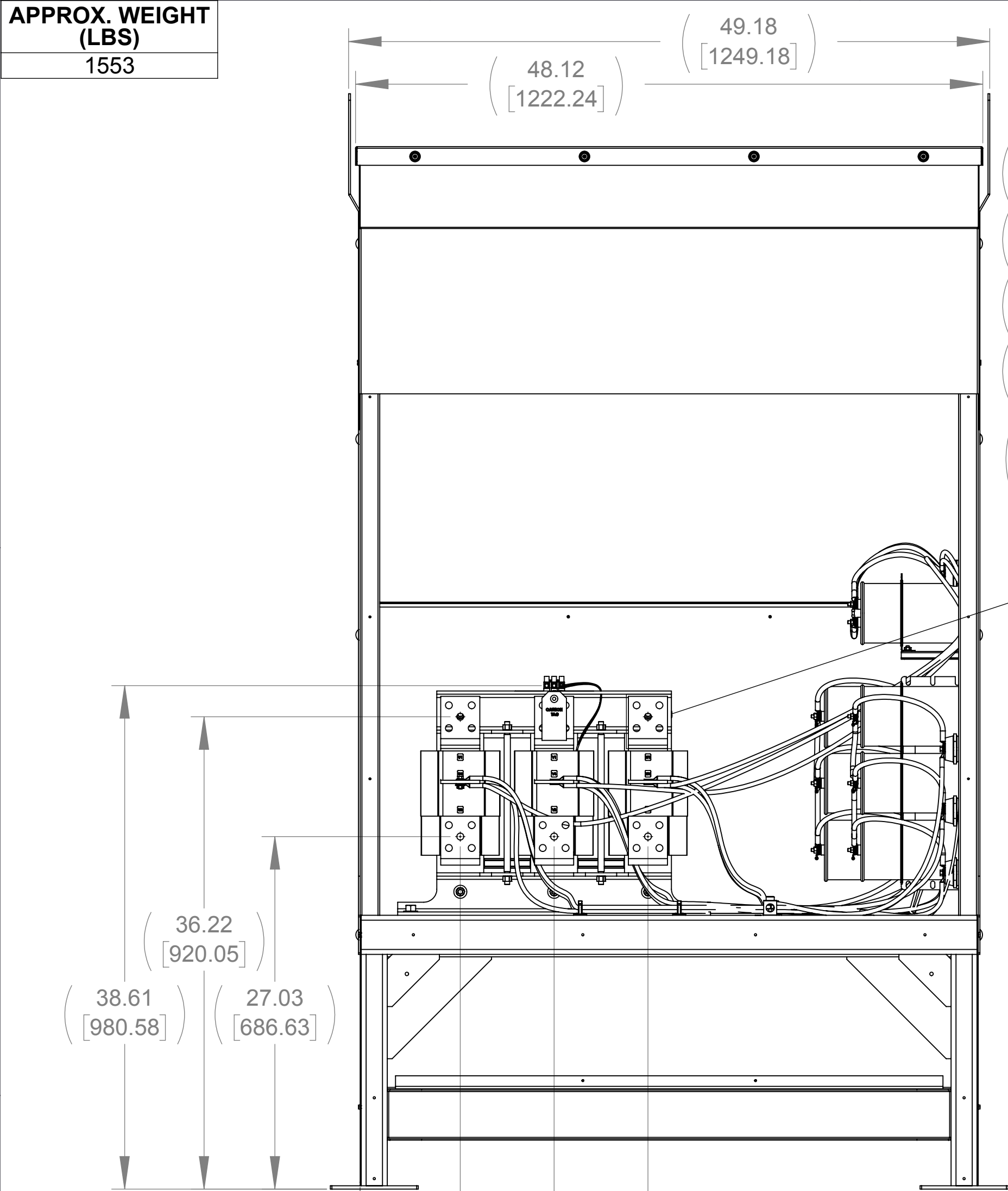
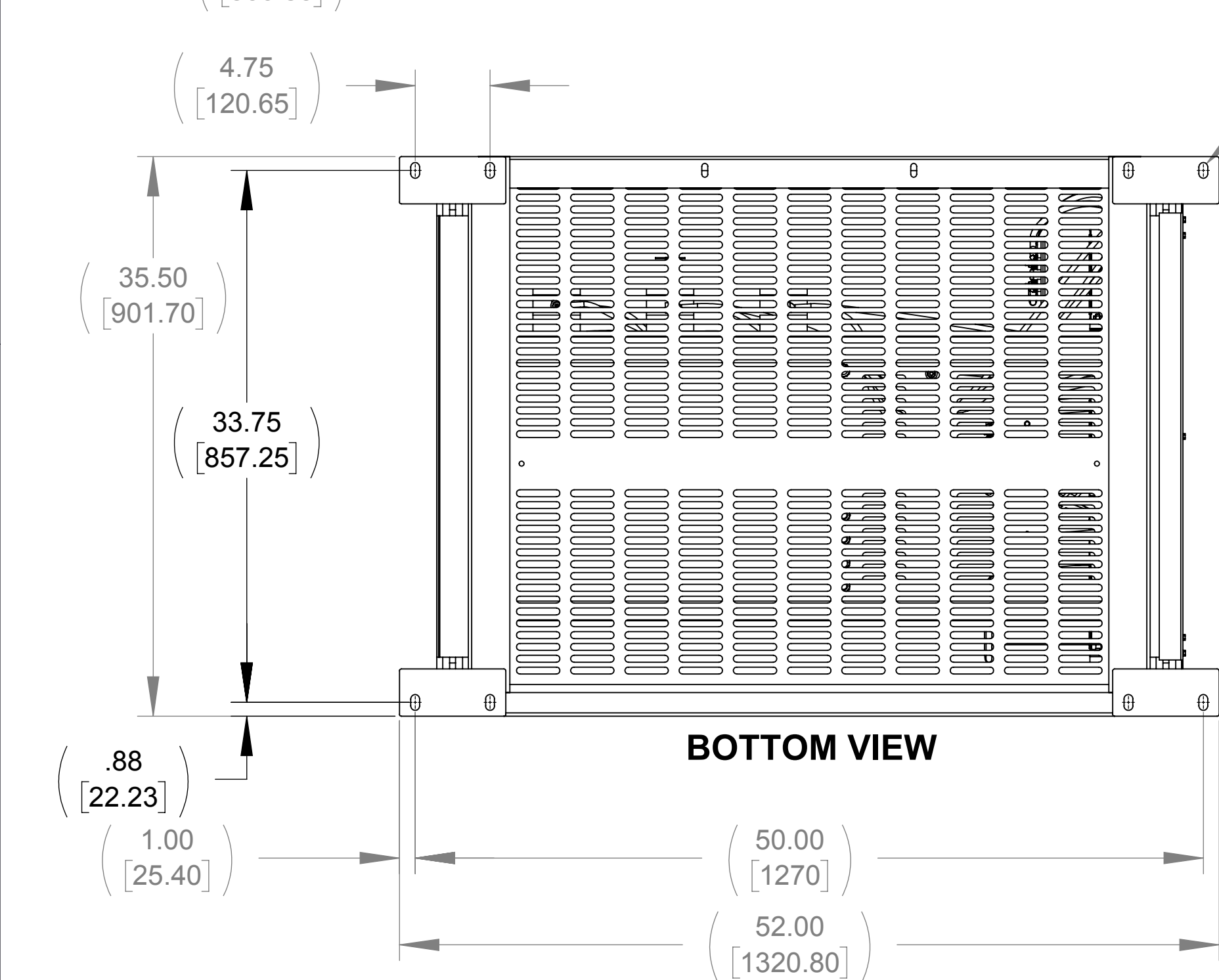


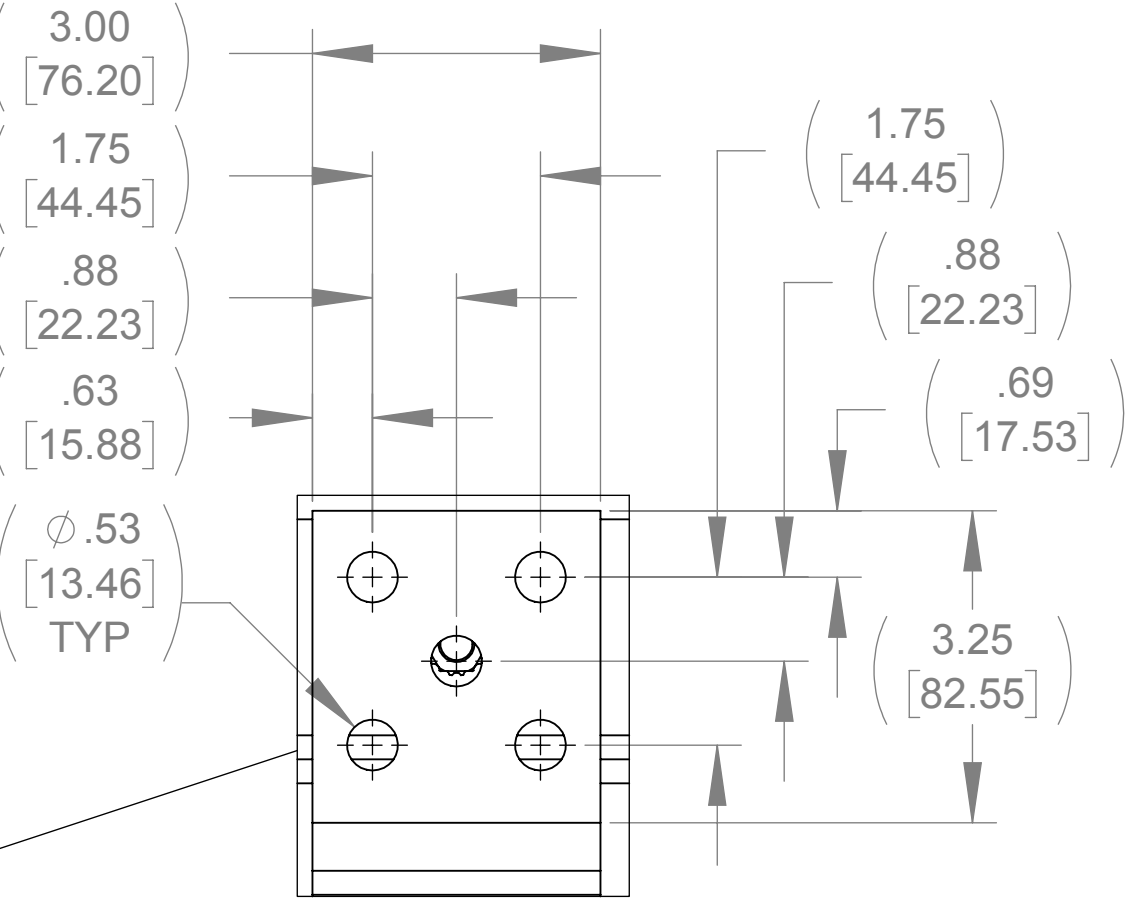
APPROX. WEIGHT
(LBS)
1553



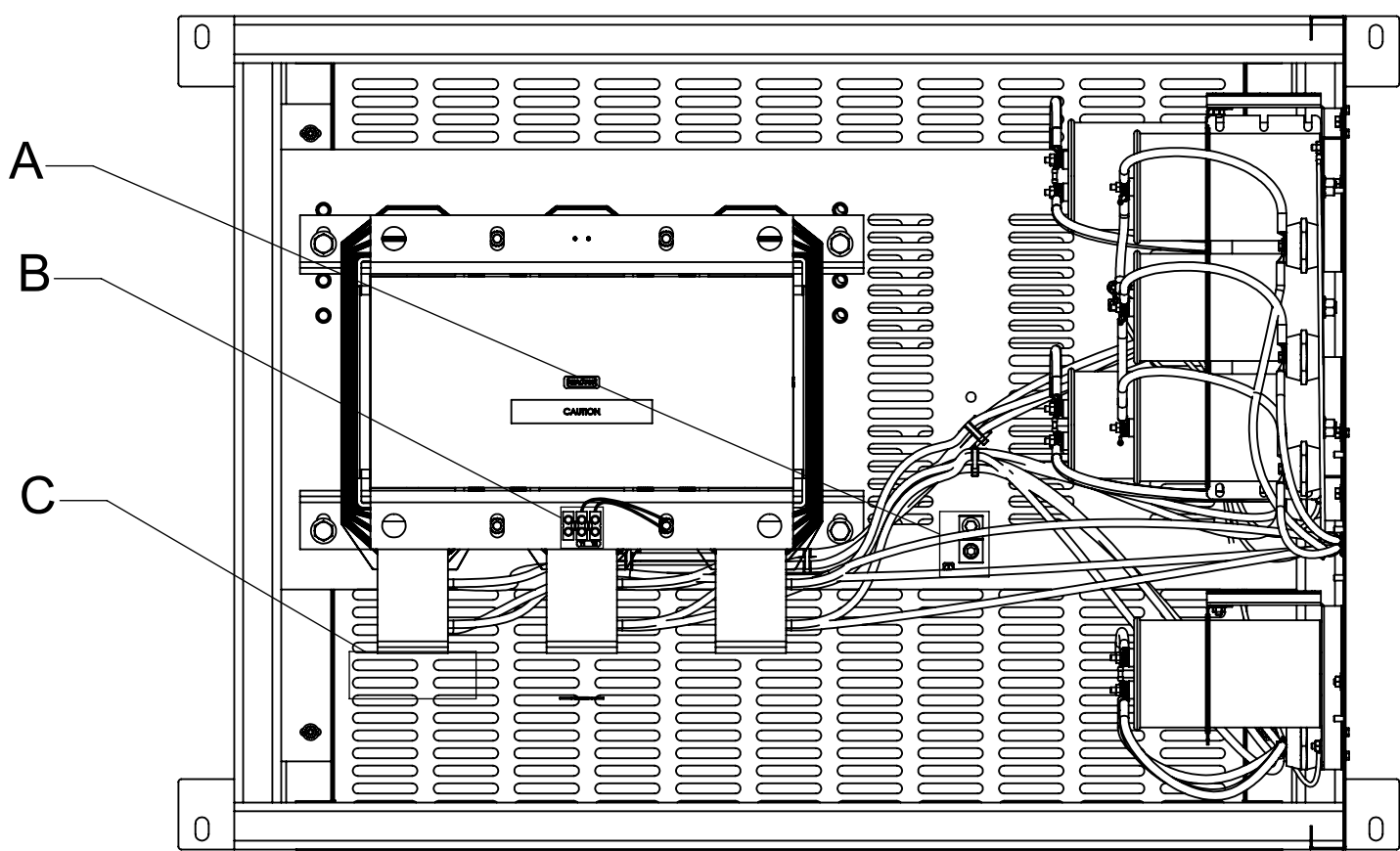
FRONT VIEW
(PANELS REMOVED)



BOTTOM VIEW



LUG VIEW
(6 PLACES)

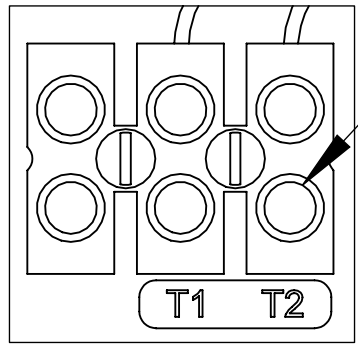


TOP VIEW
(PANELS REMOVED)

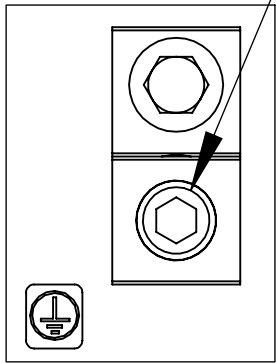
84.00
[2133.60]
79.94
[2030.47]

SIDE VIEW

Ø 1.50 X 4.50 [114.30]
[38.10]
SLOT, 2 PLACES



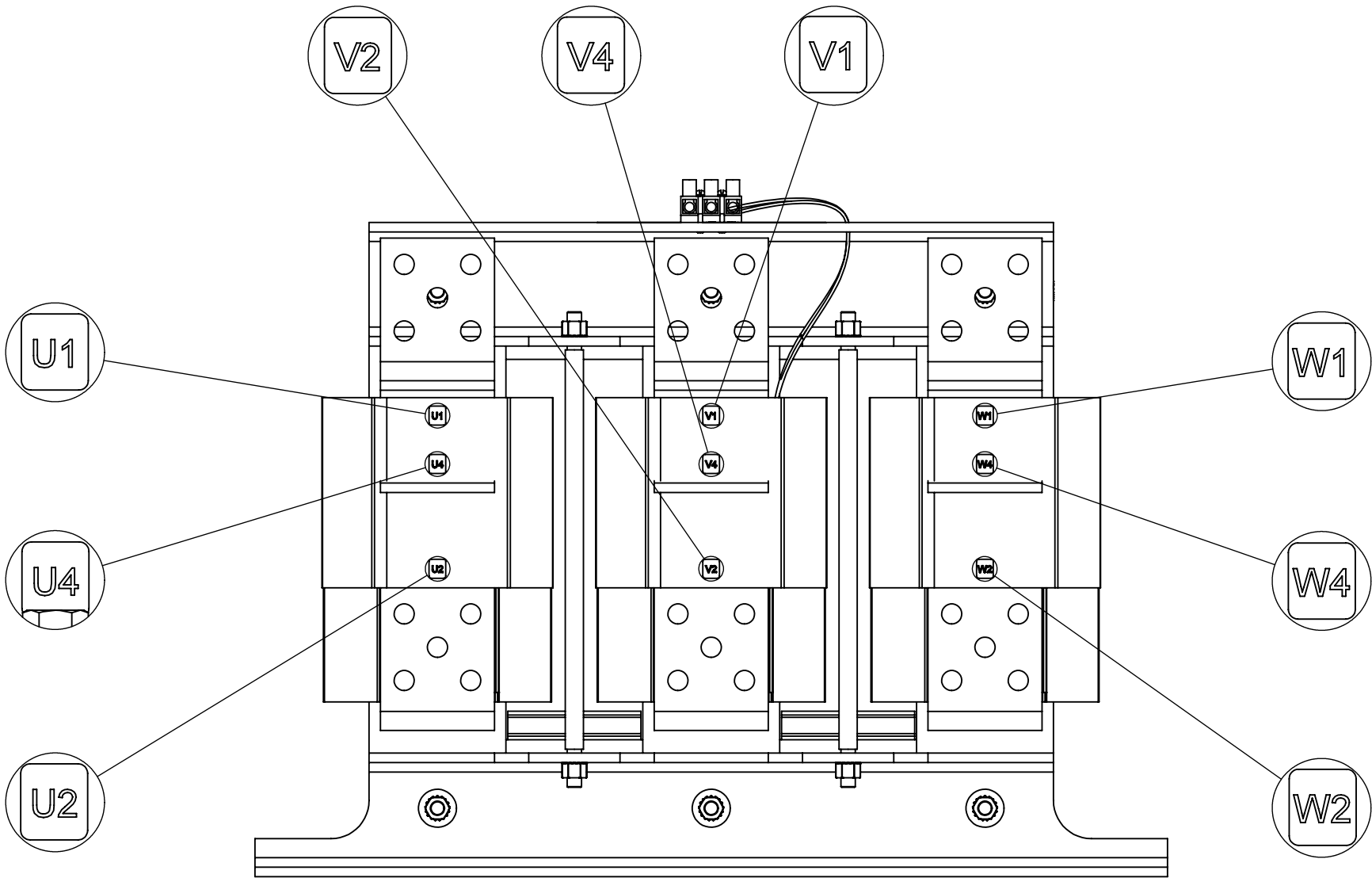
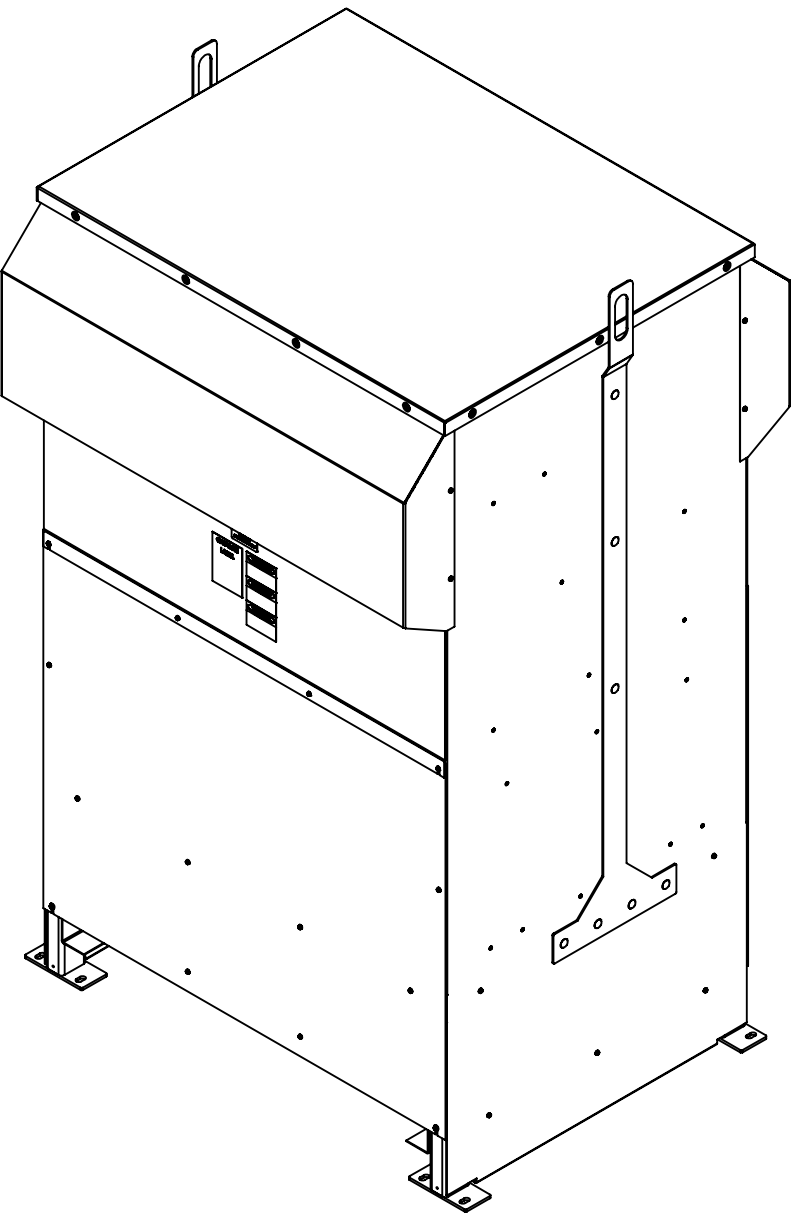
SEE NOTES 1 & 2



SEE NOTE 3 & 4

DETAIL B
CUSTOMER CONNECTION
DETAIL VIEW (THERMAL)


DETAIL A
CUSTOMER CONNECTION
DETAIL VIEW (GROUND)



CUSTOMER CONNECTION
DETAIL VIEW

NOTES:

1. TIGHTEN TERMINAL BLOCK SCREWS TO 16 IN/LBS. TORQUE.
2. TERMINAL WIRE RANGE: 4 - 14 AWG
3. TERMINAL WIRE RANGE: 6 AWG - 250 MCM
4. TIGHTEN TERMINAL BLOCK SCREWS TO 275 IN/LBS. TORQUE.

THE COMPONENT, PART OR ASSEMBLY DESCRIBED IN THIS DOCUMENT MUST COMPLY WITH THE EU (EUROPEAN UNION) DIRECTIVE RoHS2		MATERIAL		CONFIDENTIAL AND PROPRIETARY INFORMATION THIS DOCUMENT CONTAINS CONFIDENTIAL AND PROPRIETARY INFORMATION OF MTE CORPORATION AND MAY NOT BE USED, COPIED OR DISCLOSED TO OTHERS EXCEPT WITH THE AUTHORIZED WRITTEN PERMISSION OF MTE CORPORATION			
CONTAINS <0.1% OF ANY SVHC BY WEIGHT PER REACH REGULATION				DESCRIPTION			
<div>UNLESS OTHERWISE SPECIFIED DIMENSIONS ARE IN INCHES [MM] TOLERANCES ARE:</div> <div>ANGLES: ± 1 °</div> <div>1 PLACE .X: ± .1 [2.5]</div> <div>2 PLACE .XX: ± .03 [0.76]</div> <div>3 PLACE .XXX: ± .010 [0.254]</div> <div><div>N83 W13330 Leon Road Menomonee Falls, WI 53051 USA 800.455-4683 262.253.8200</div></div>		DRAWN	DATE	SWG 865A 600V 2-8kHz FILTER, NEMA 3R ENCL.			
		WF	09/18/18				
		CHECKED	DATE				
		WF	09/21/18				
		APPROVED	DATE	SIZE	DWG No.	REV	
		TL	10/09/18	D	CD SWGW0865E	00	
				SCALE	1:8	SHEET 1 OF 1	