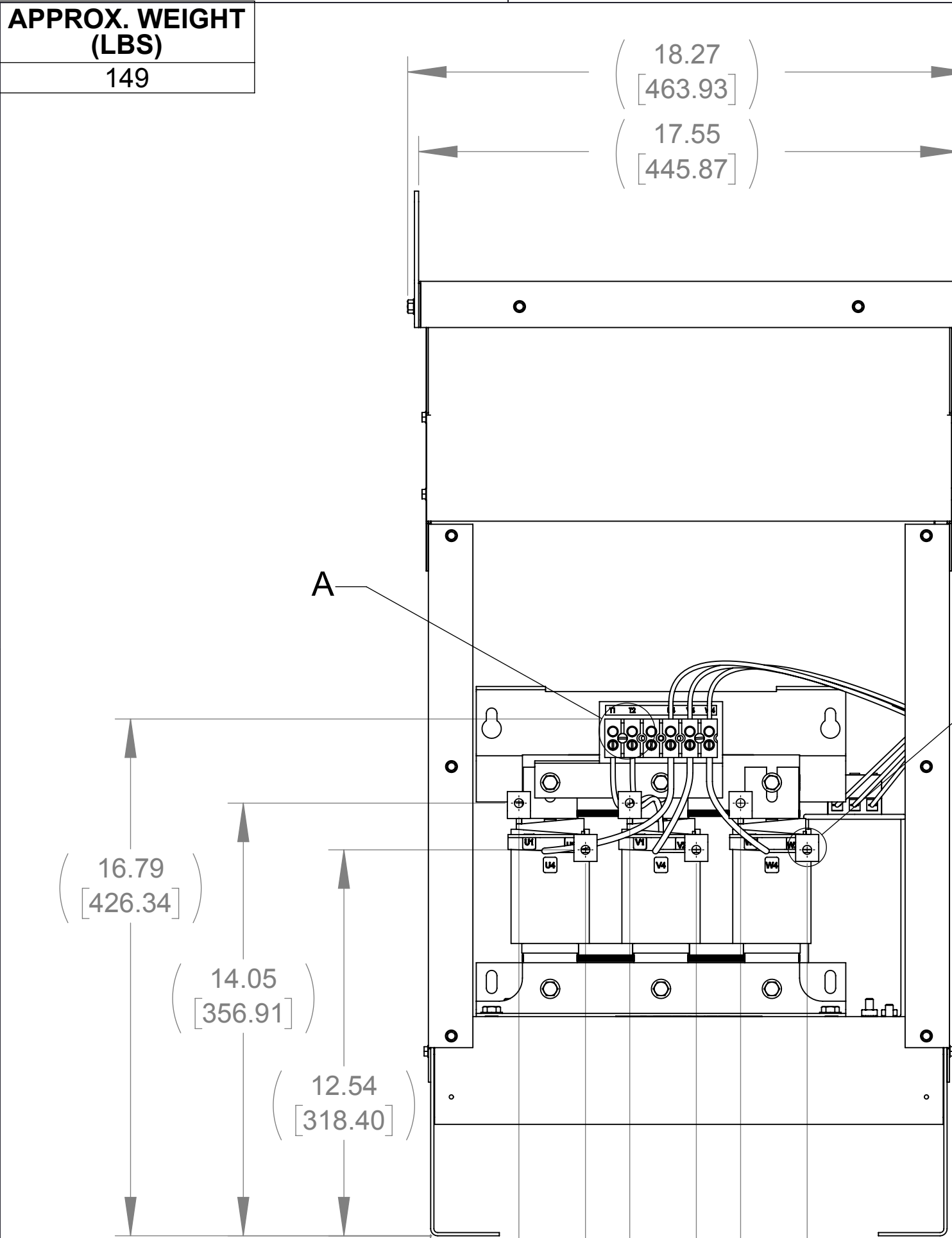
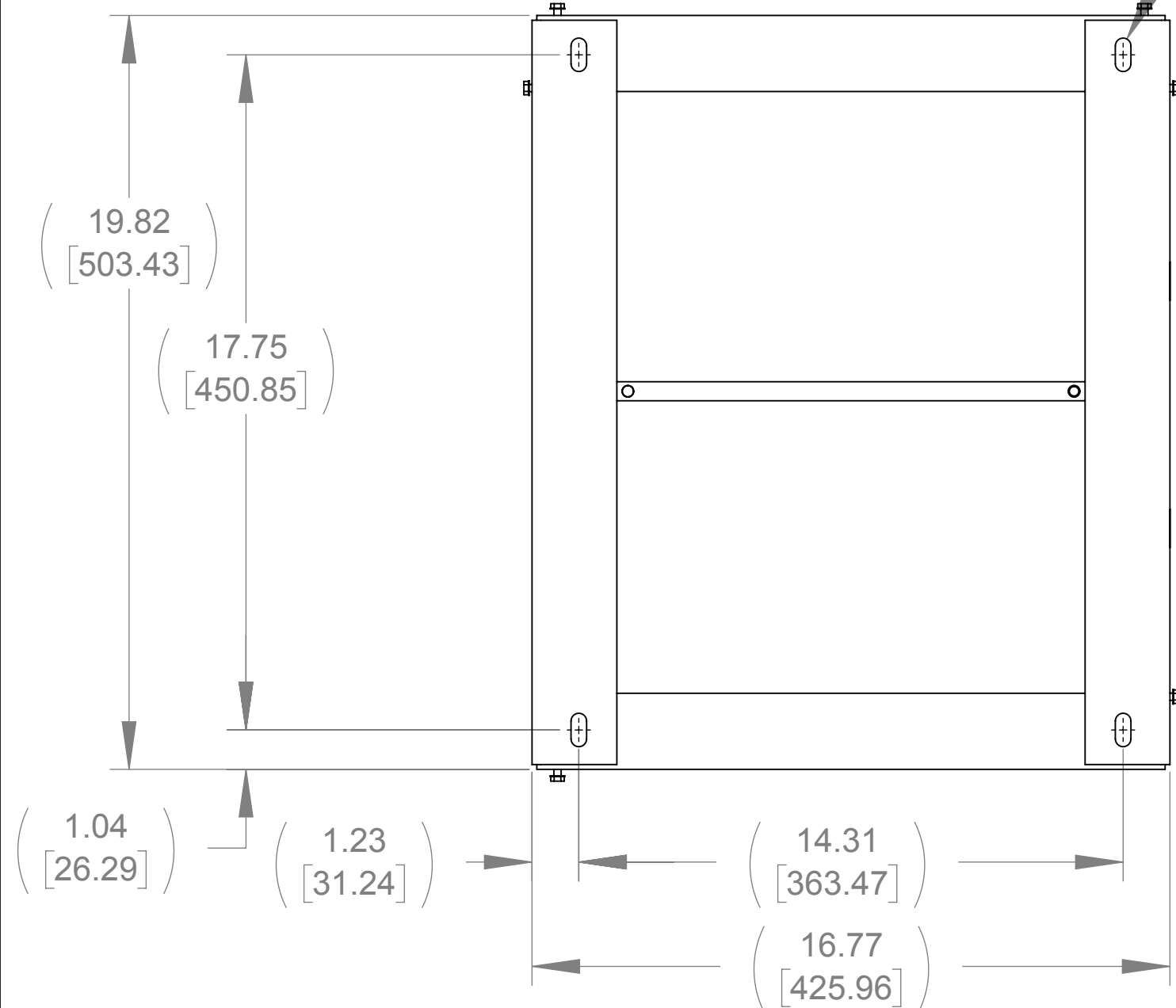
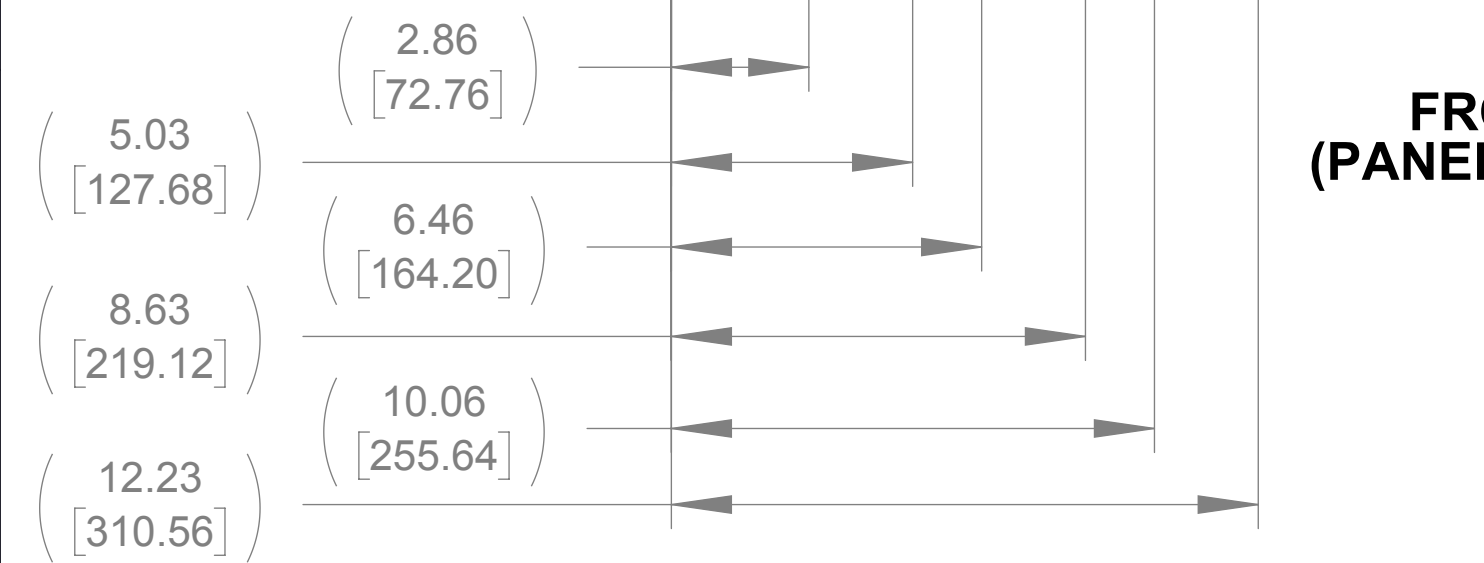


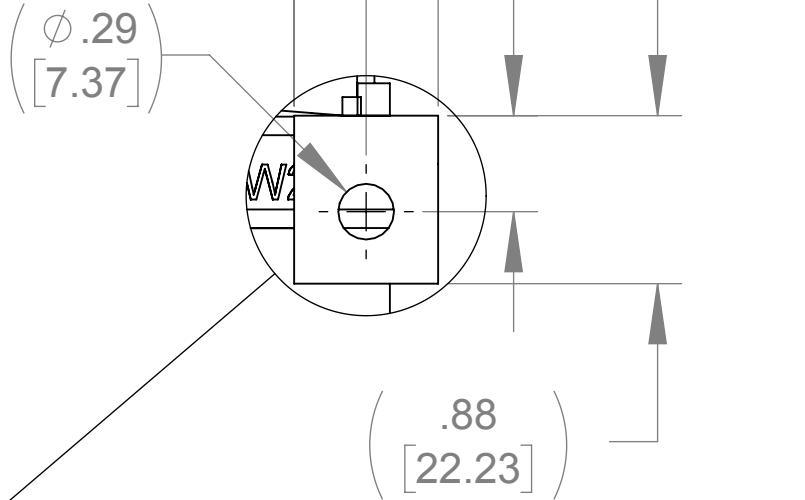
APPROX. WEIGHT
(LBS)
149



FRONT VIEW
(PANELS REMOVED)

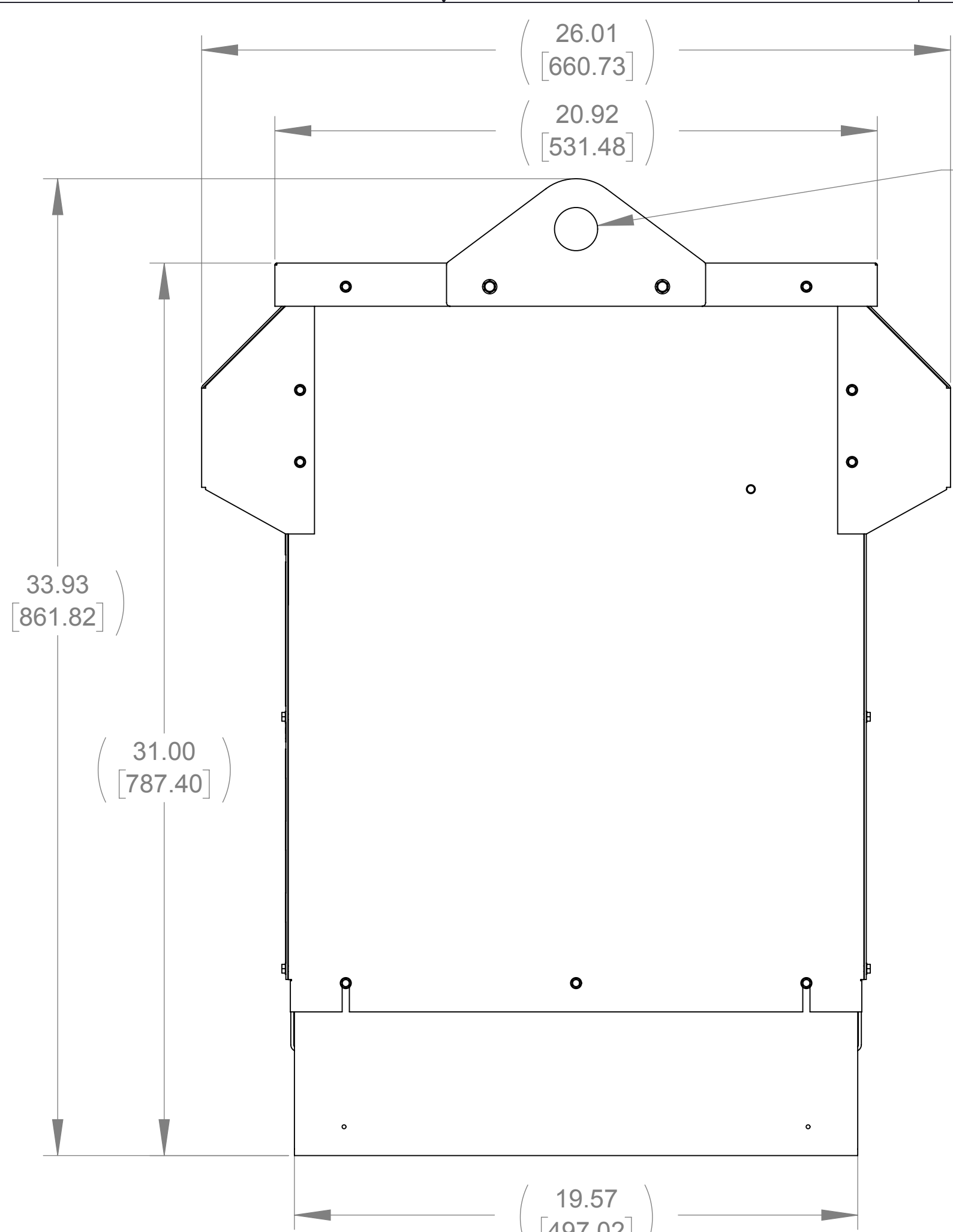


BOTTOM VIEW

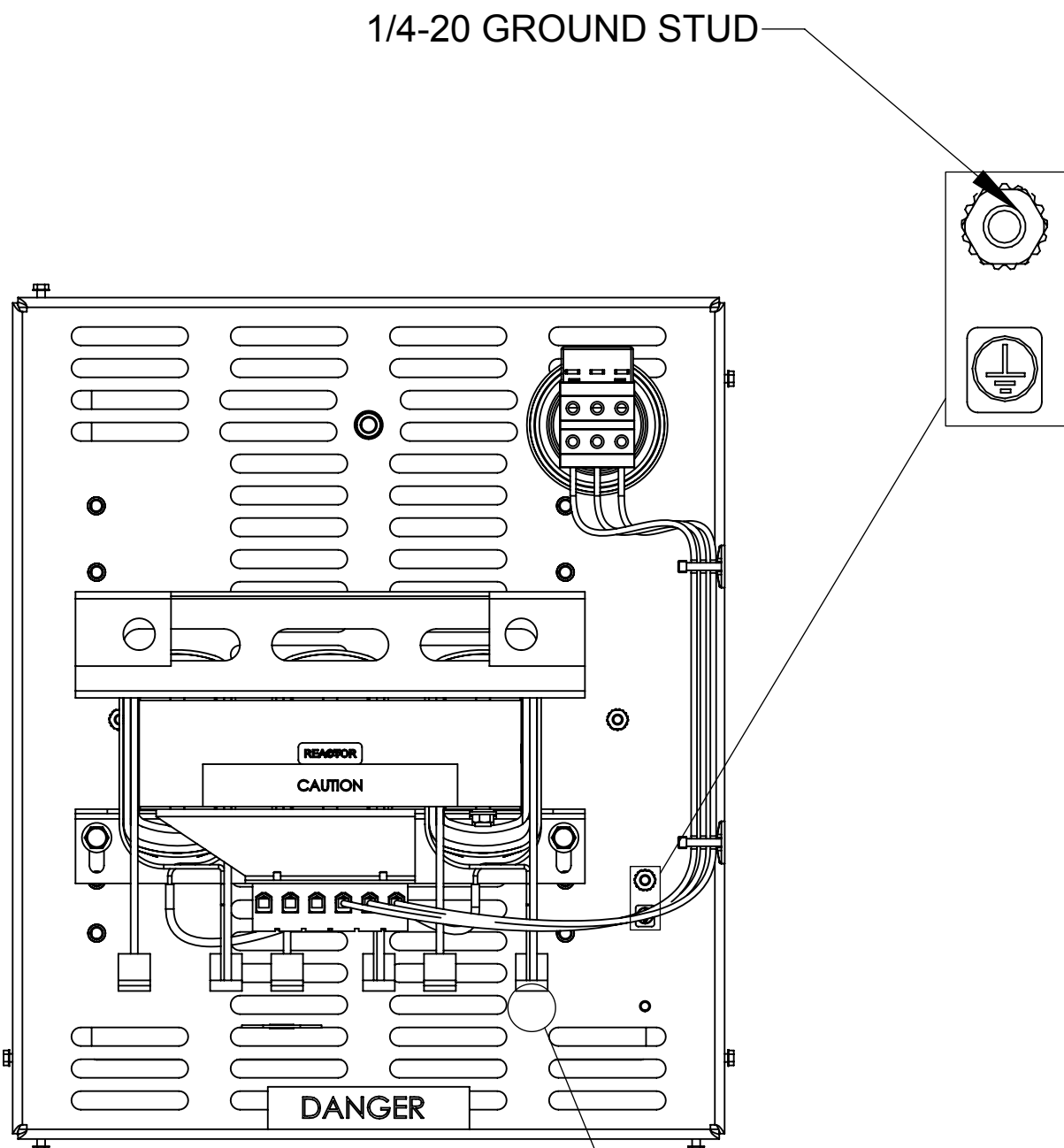


LUG VIEW
(3 PLACES)

.41 [10.41] X .88 [22.35]
SLOT, 4 PLACES

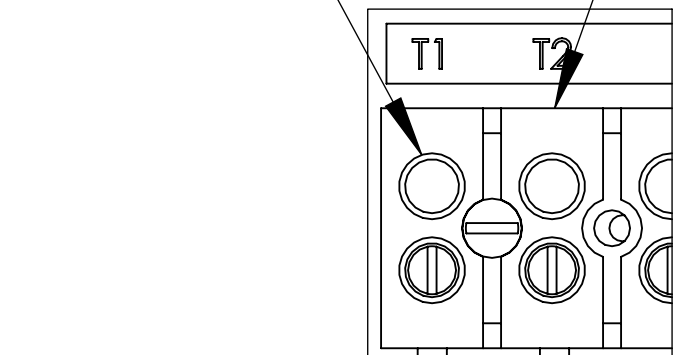


SIDE VIEW

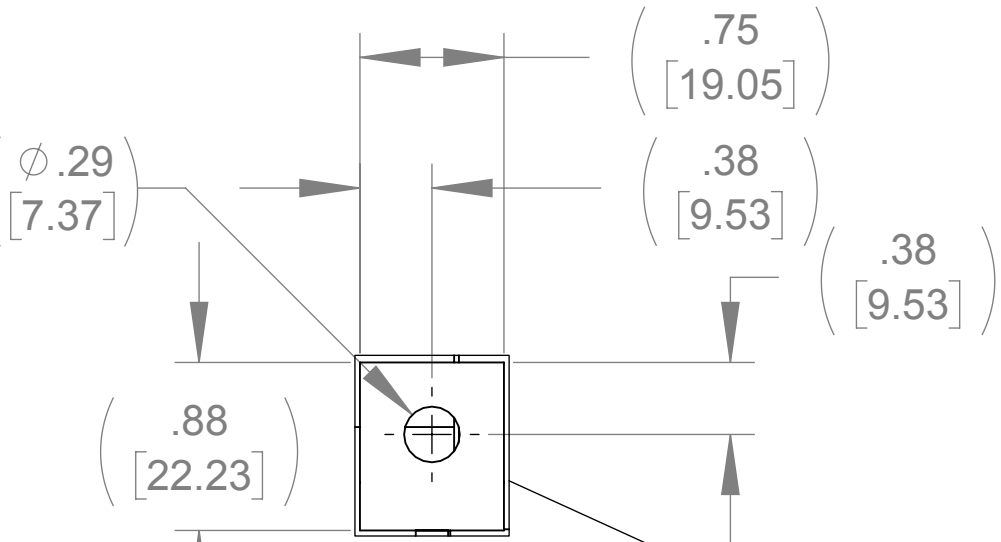


TOP VIEW
(PANELS REMOVED)

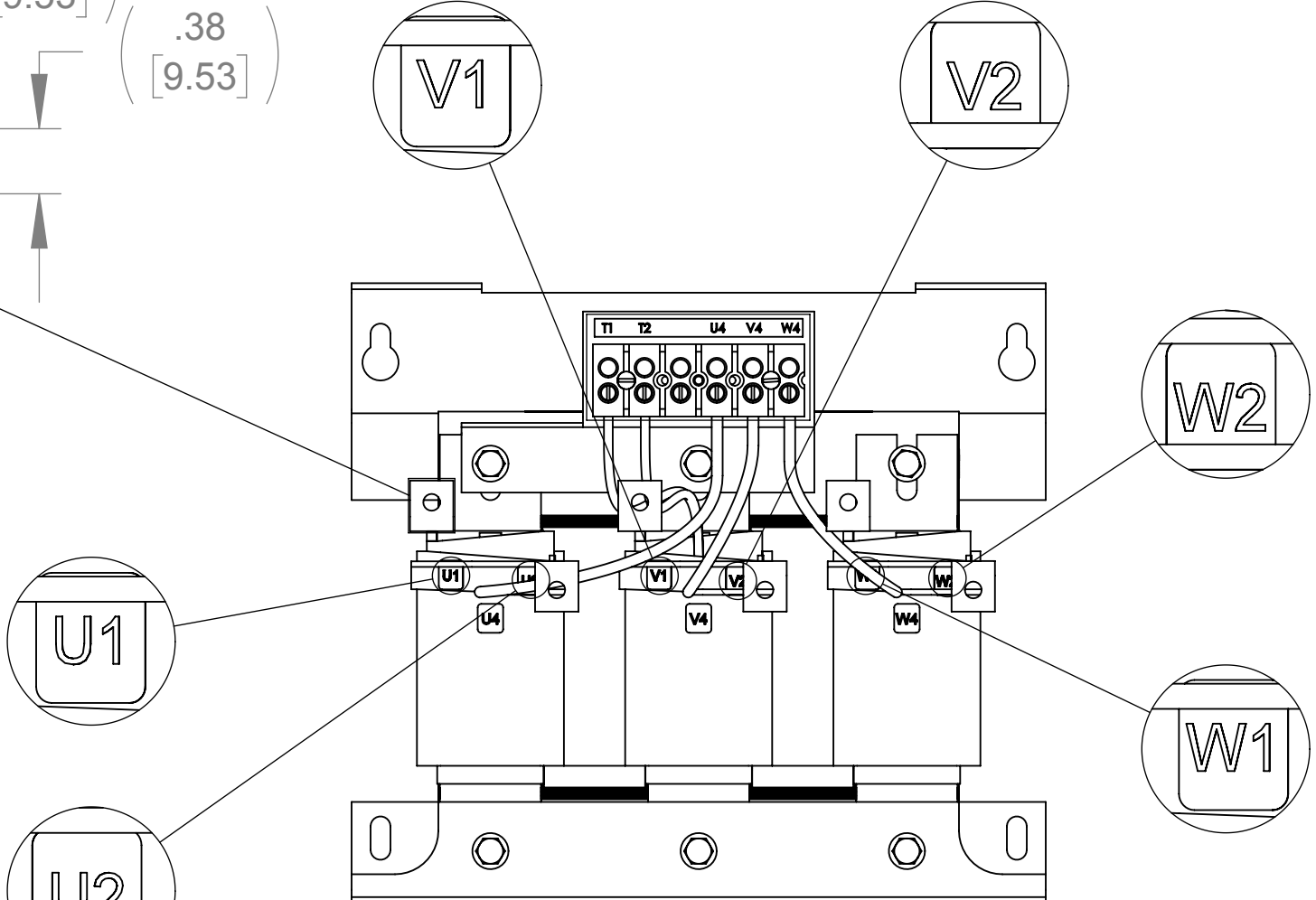
SEE NOTE 1
SEE NOTE 2



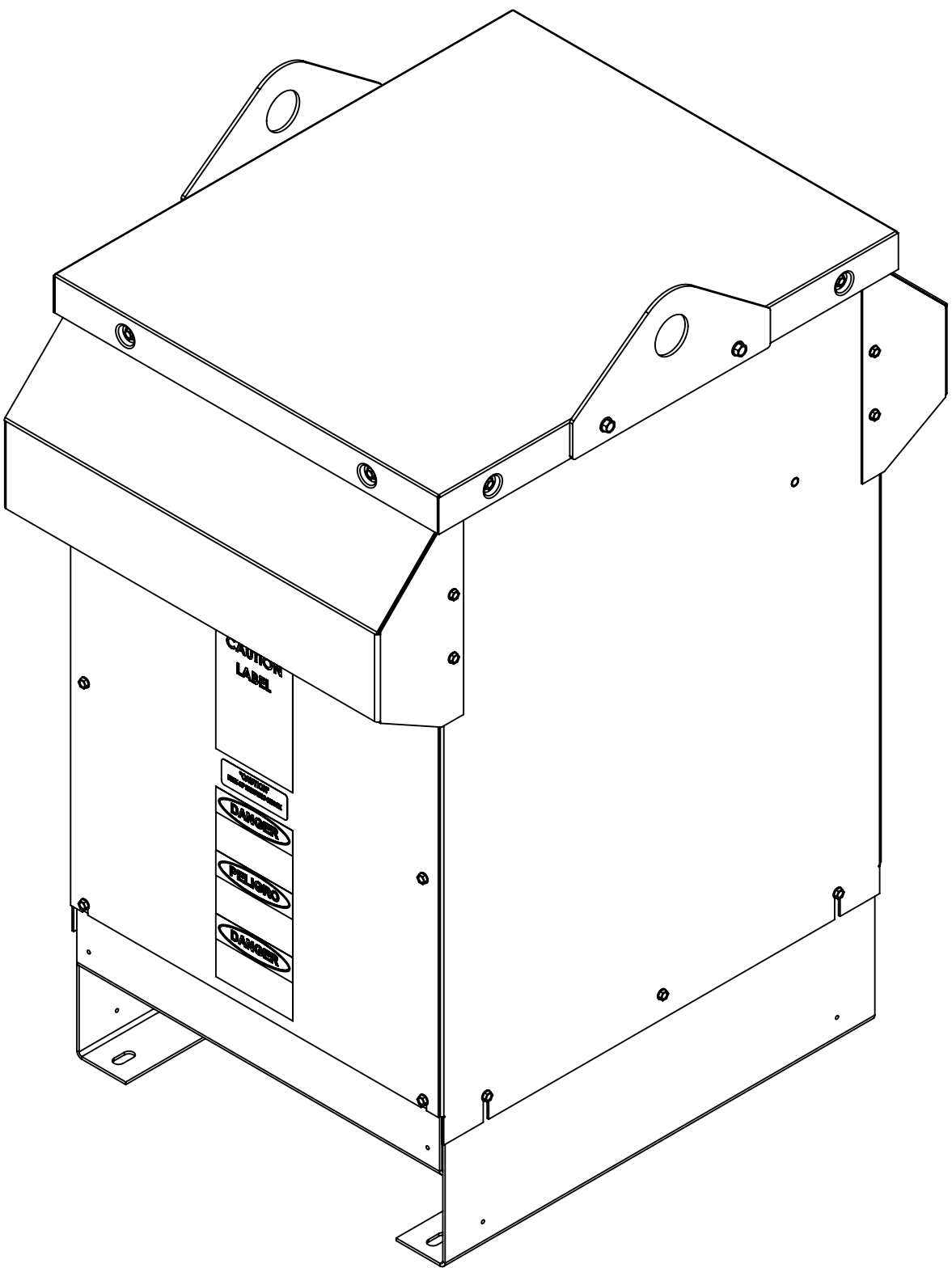
DETAIL A
CUSTOMER CONNECTION
DETAIL VIEW (THERMAL)



LUG VIEW
(3 PLACES)



CUSTOMER CONNECTION
DETAIL VIEW



NOTES:

1. TIGHTEN TERMINAL BLOCK SCREWS TO 16 IN/LBS. TORQUE.
2. TERMINAL WIRE SIZE: 4-14 AWG.

THE COMPONENT, PART OR ASSEMBLY DESCRIBED IN THIS DOCUMENT MUST COMPLY WITH THE EU(EUROPEAN UNION) DIRECTIVE ROHS2		MATERIAL		CONFIDENTIAL AND PROPRIETARY INFORMATION THIS DOCUMENT CONTAINS CONFIDENTIAL AND PROPRIETARY INFORMATION OF MTE CORPORATION AND MAY NOT BE USED, COPIED OR DISCLOSED TO OTHERS EXCEPT WITH THE AUTHORIZED WRITTEN PERMISSION OF MTE CORPORATION	
CONTAINS <0.1% OF ANY SVHC BY WEIGHT PER REACH REGULATION				DESCRIPTION	
UNLESS OTHERWISE SPECIFIED DIMENSIONS ARE IN INCHES [MM] TOLERANCES ARE: ANGLES: ± 1 ° 1 PLACE .X: ± .1 [2.5] 2 PLACE .XX: ± .03 [0.76] 3 PLACE .XXX: ± .010 [0.254]		MTE POWER QUALITY. SOLVED. N83 W13330 Leon Road Menomonee Falls, WI 53051 USA 800.455.4683 262.253.8200		SWG 55A 600V 2-8kHz FILTER, NEMA 3R ENCL.	
DRAWN WF		DATE 08/07/18		SIZE D	
CHECKED WF		DATE 08/21/18		DWG No. CD SWGW0055E	
APPROVED TL		DATE 10/09/18		REV 00	
SCALE 1:4				SHEET 1 OF 1	