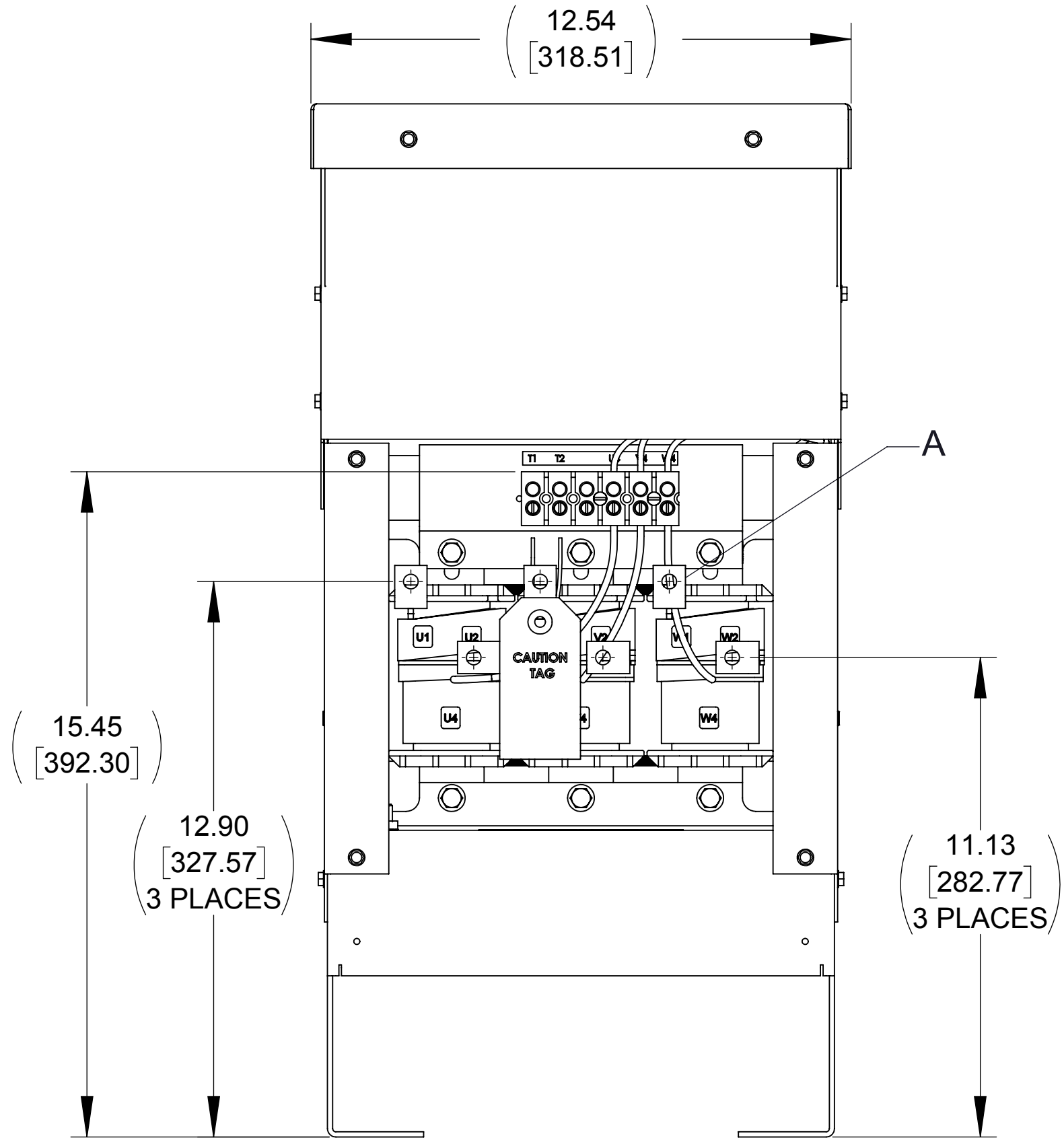
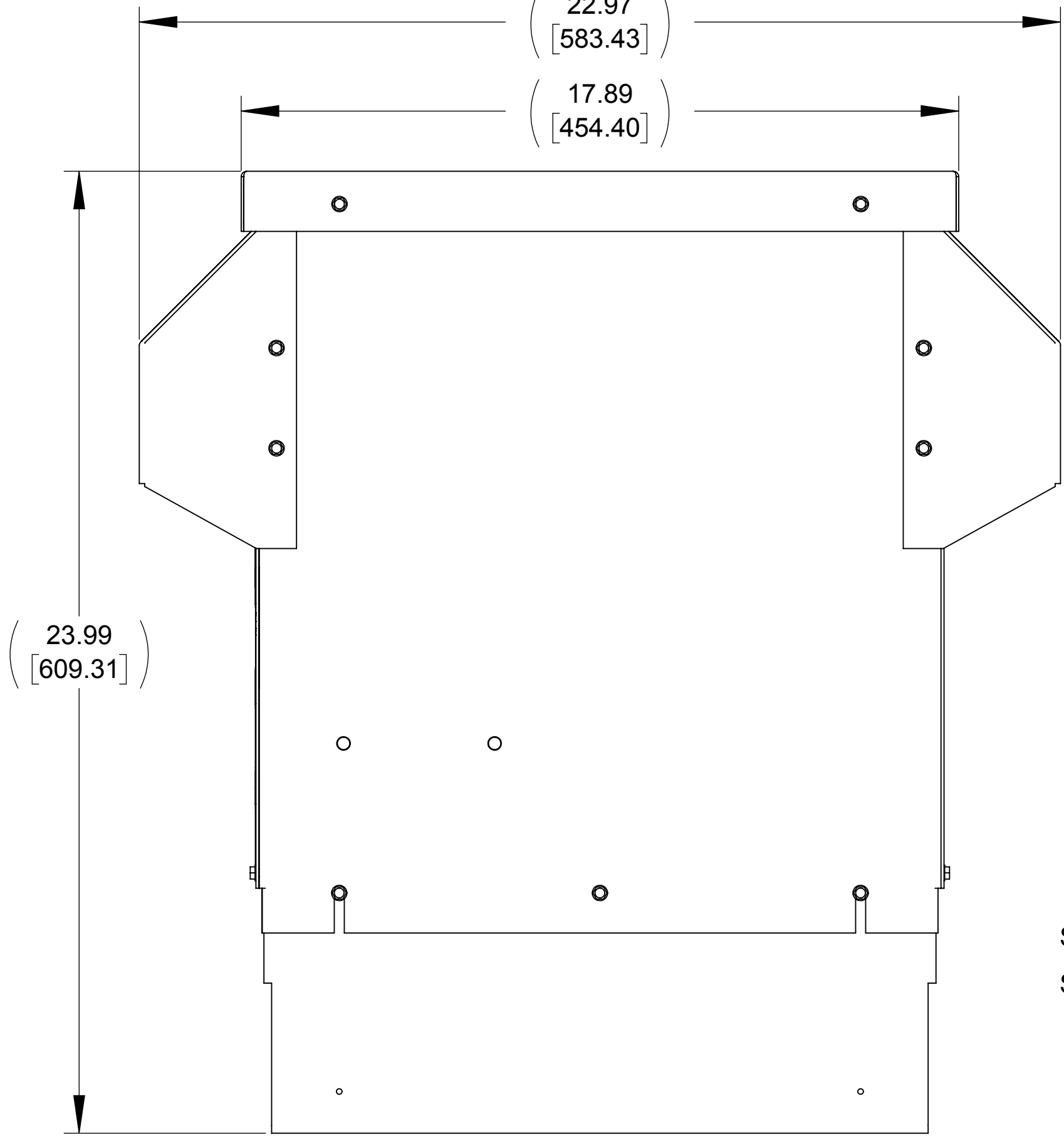


APPROX. WEIGHT  
(LBS)  
87

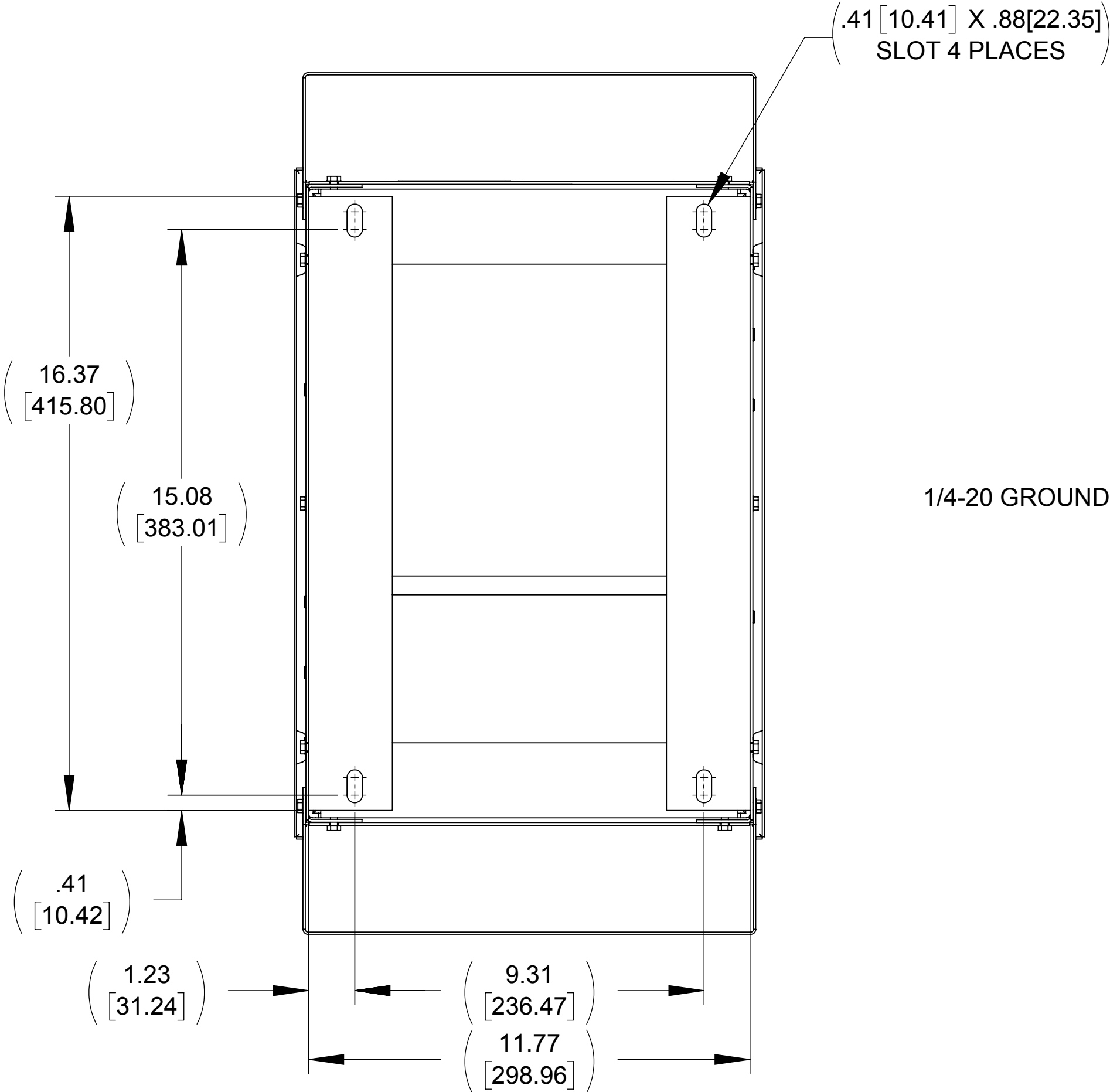
ECO No	DESCRIPTION	REV BY	DATE
M12123	FIXED ROUTING ISSUES	JD	11/19/19



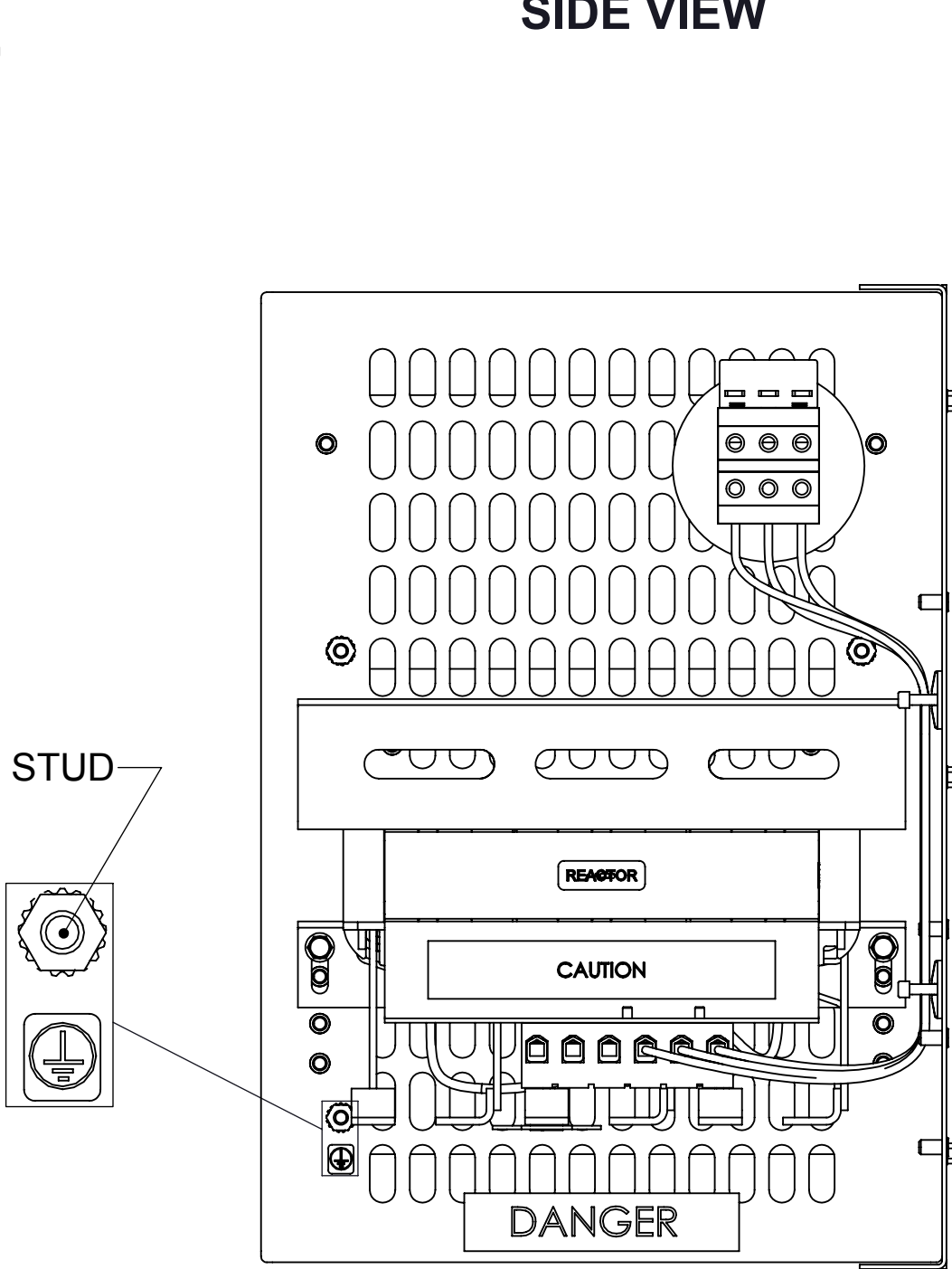
FRONT VIEW  
(PANELS REMOVED)



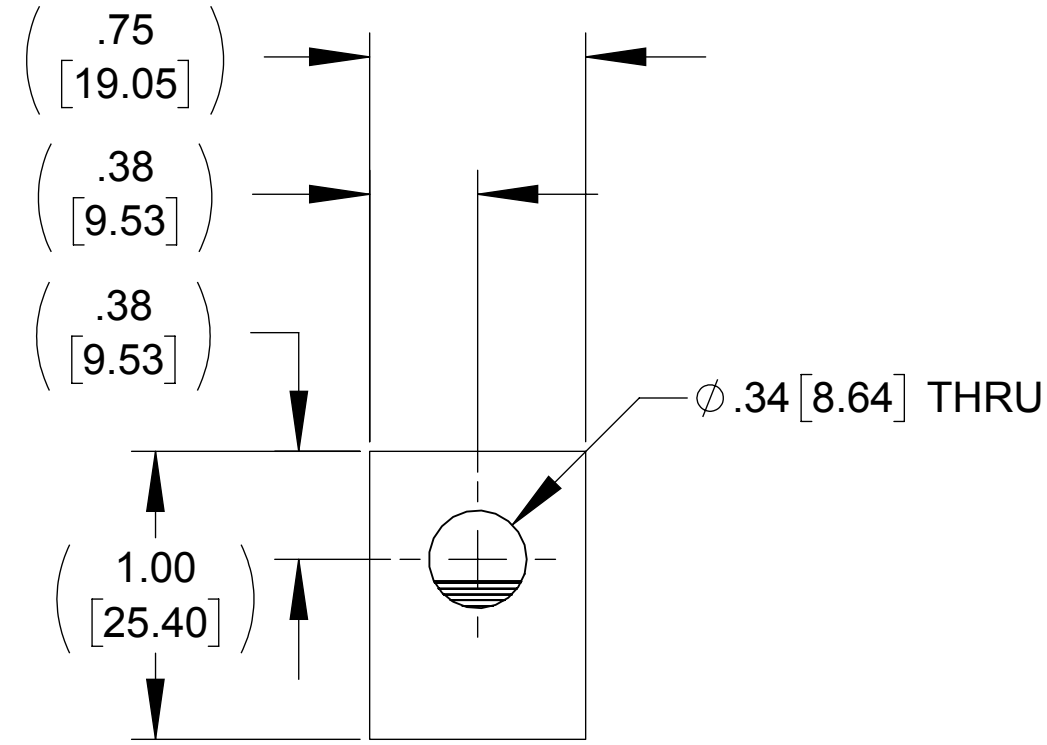
SIDE VIEW



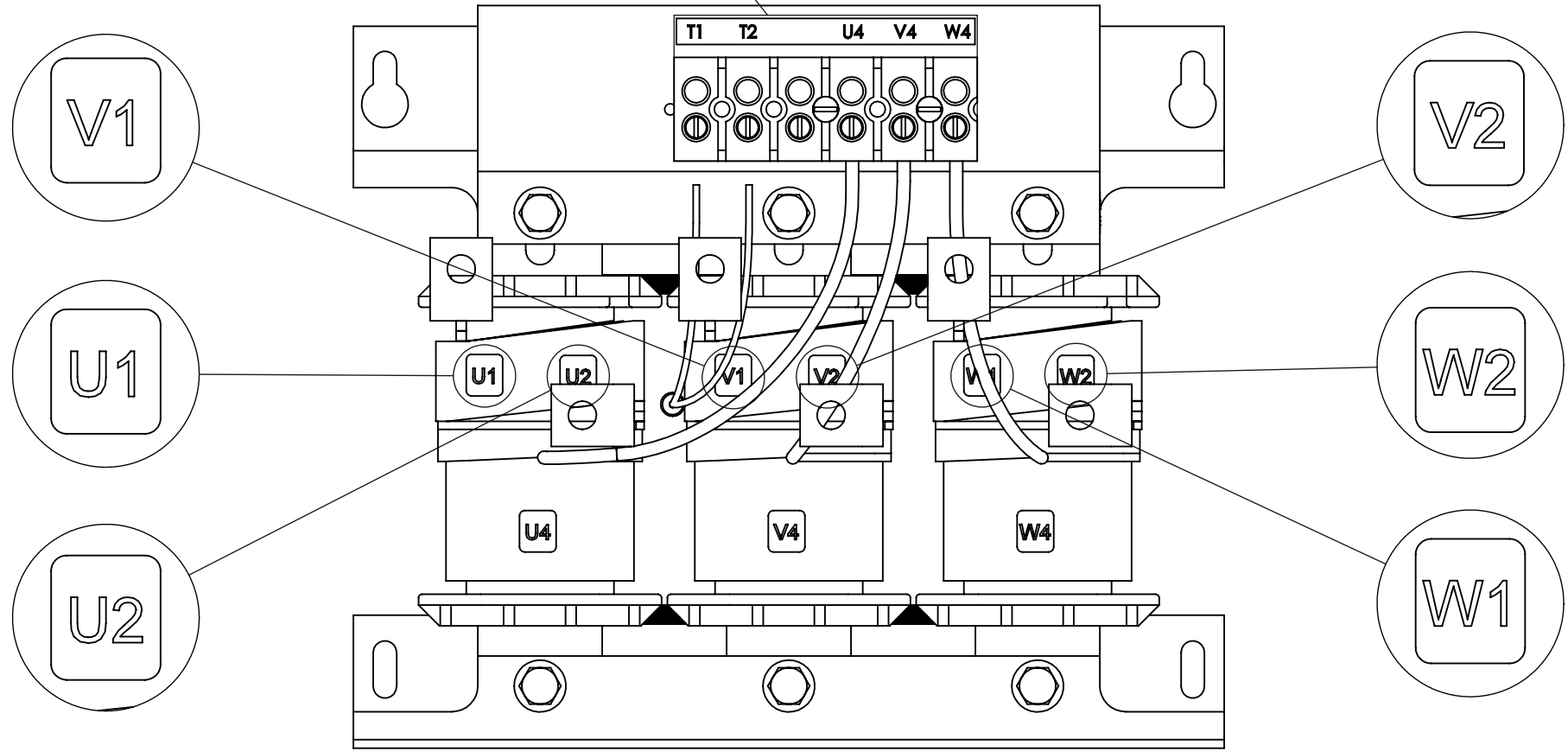
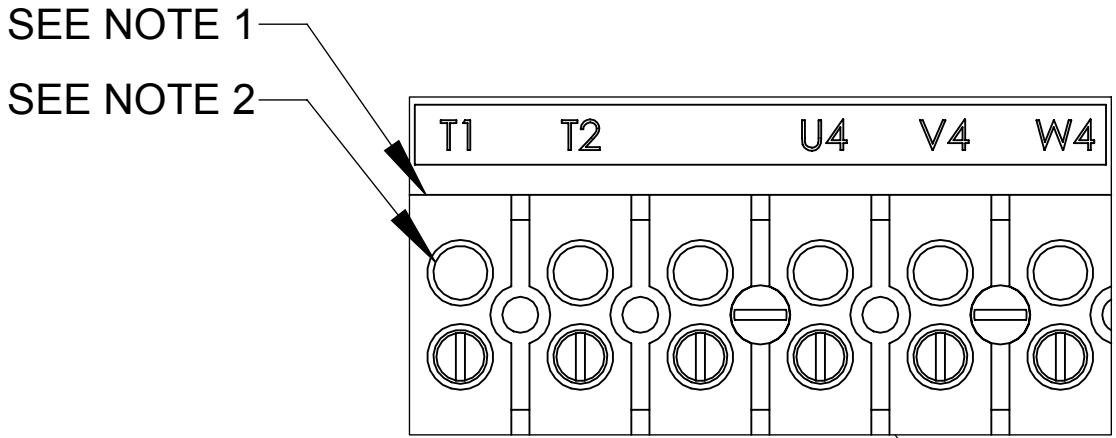
BOTTOM VIEW



TOP VIEW  
(PANELS REMOVED)




DETAIL A  
(6 PLACES)



CUSTOMER CONNECTION  
DETAIL VIEW

NOTES:

1. TERMINAL WIRE RANGE: 4-14 AWG.
2. TERMINAL SCREW TIGHTENING TORQUE: 16 IN/LBS.
3. REFER TO USER MANUAL FOR COMPLETE INSTALLATION INSTRUCTIONS.

THE COMPONENT, PART OR ASSEMBLY DESCRIBED IN THIS DOCUMENT MUST COMPLY WITH THE EU(EUROPEAN UNION) DIRECTIVE RoHS2		MATERIAL		CONFIDENTIAL AND PROPRIETARY INFORMATION THIS DOCUMENT CONTAINS CONFIDENTIAL AND PROPRIETARY INFORMATION OF MTE CORPORATION AND MAY NOT BE USED, COPIED OR DISCLOSED TO OTHERS EXCEPT WITH THE AUTHORIZED WRITTEN PERMISSION OF MTE CORPORATION		
CONTAINS <0.1% OF ANY SVHC BY WEIGHT PER REACH REGULATION				DESCRIPTION		
UNLESS OTHERWISE SPECIFIED DIMENSIONS ARE IN INCHES [MM] TOLERANCES ARE:  ANGLES: ± 1 °  1 PLACE .X: ± .1 [2.5]  2 PLACE .XX: ± .03 [0.76]  3 PLACE .XXX: ± .010 [0.254]	  N83 W13330 Leon Road Menomonee Falls, WI 53051 USA 800.455.4683 262.253.8200	DRAWN	DATE	SWG 55A 208-240V 2-8kHz FILTER, NEMA 3R ENCL		
		JD	08/02/19			
		CHECKED	DATE			
		JD	11/19/19	SIZE	DWG No.	REV
		APPROVED	DATE	D	CD SWGW0055A	01
		PY	11/19/19	SCALE 1:3	SHEET 1 OF 1	

