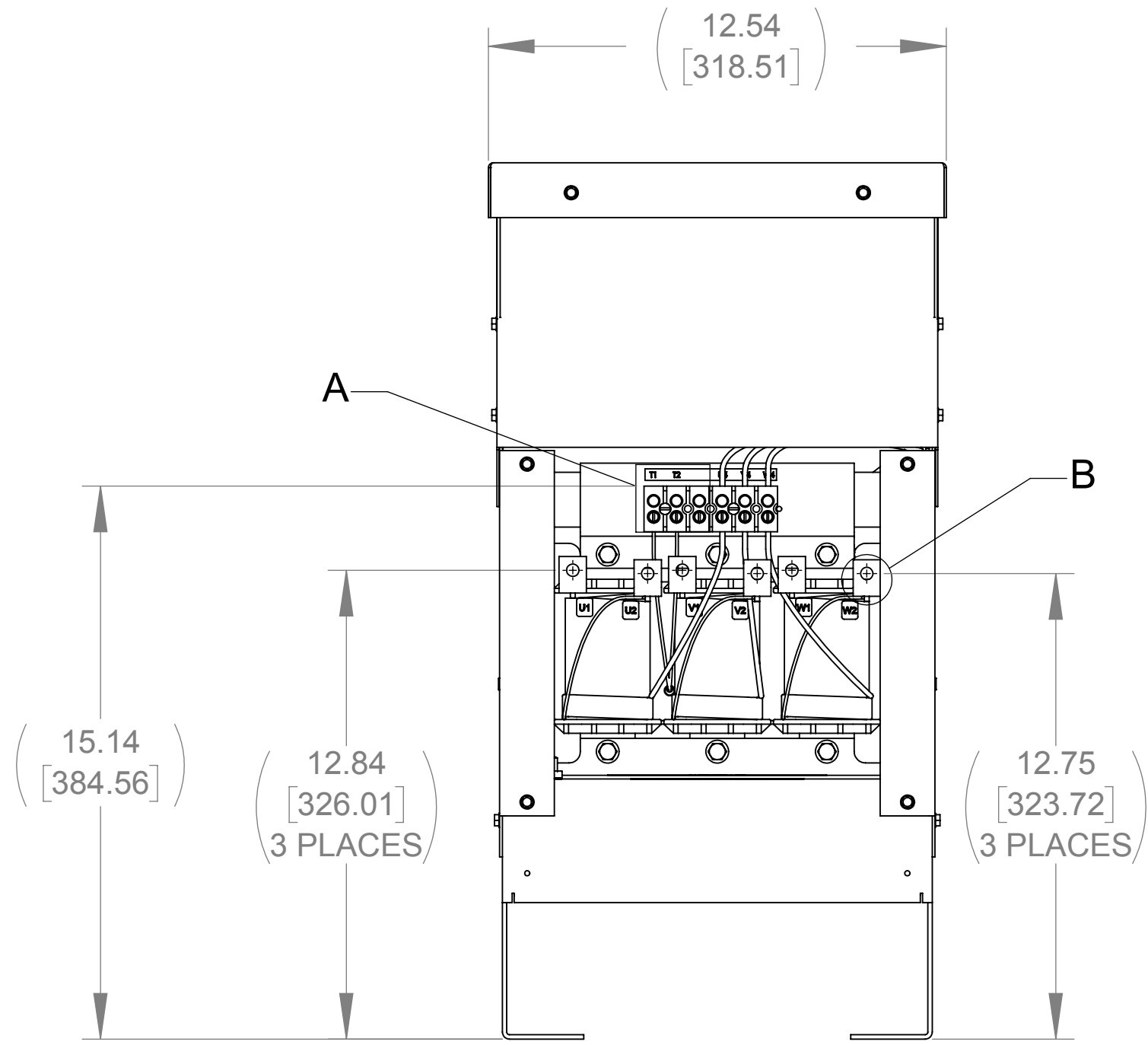
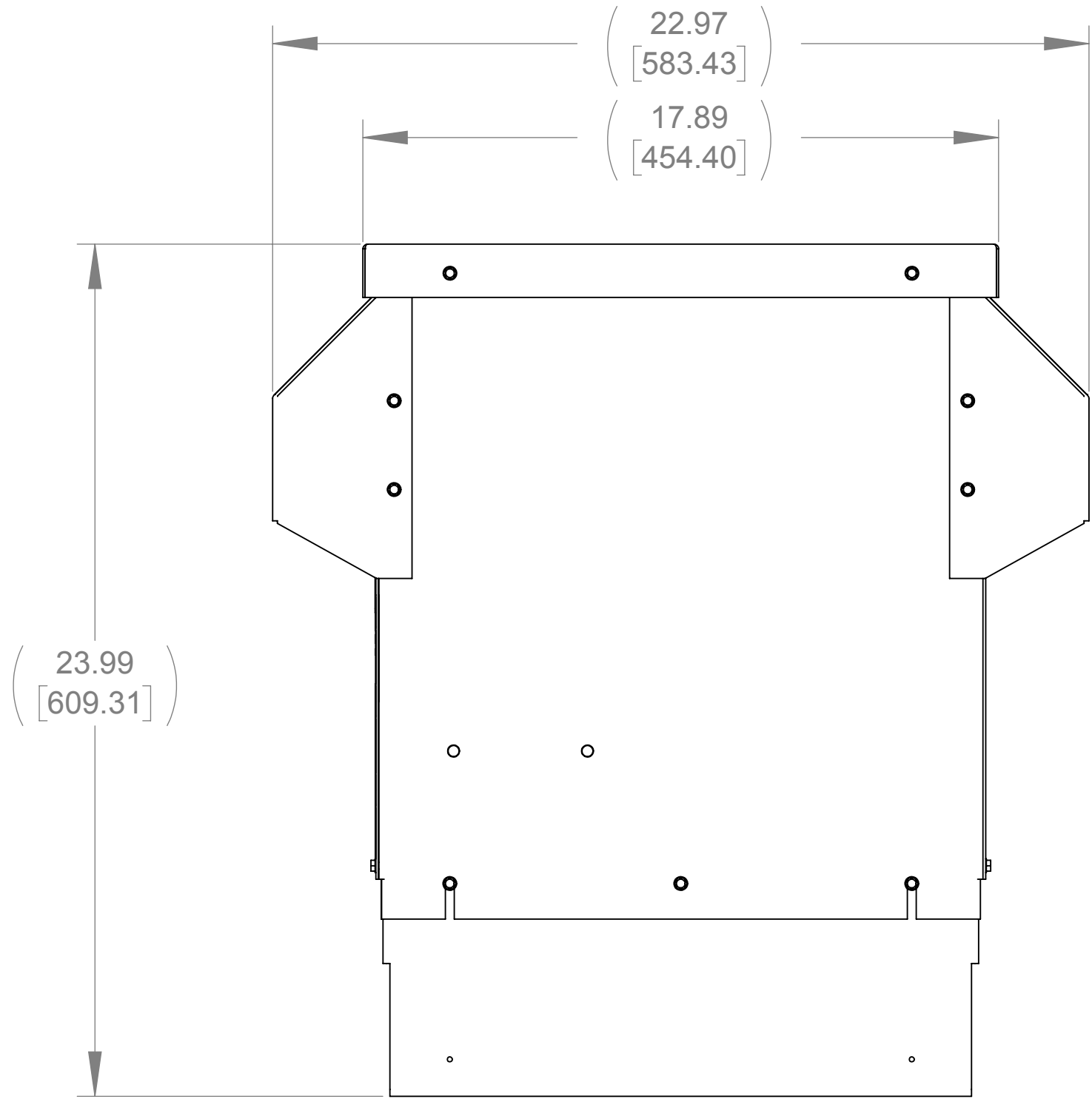


APPROX. WEIGHT
(LBS)
95

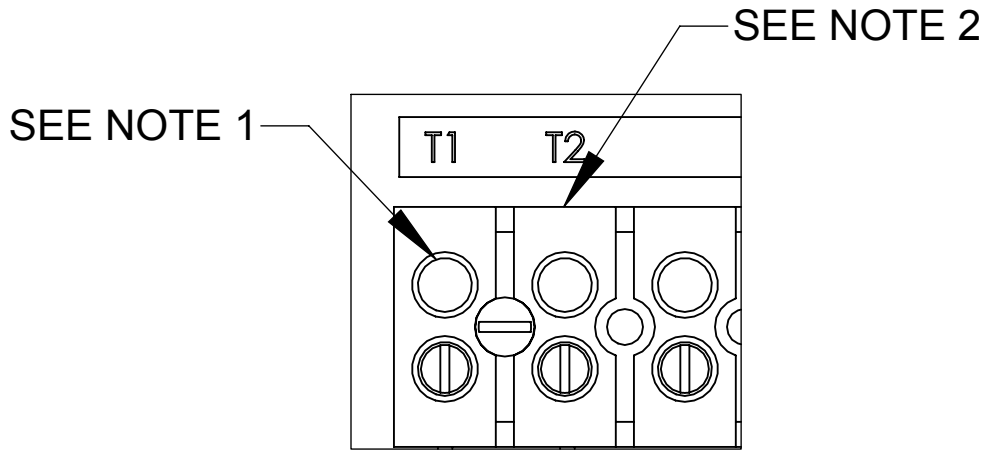
ECO No	DESCRIPTION	REV BY	DATE



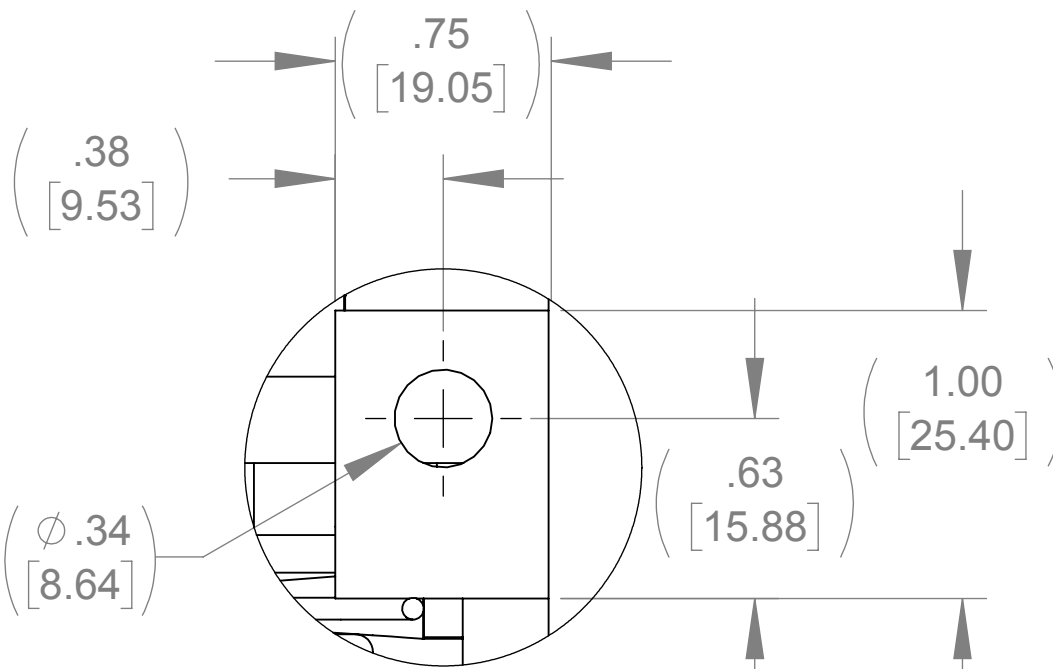
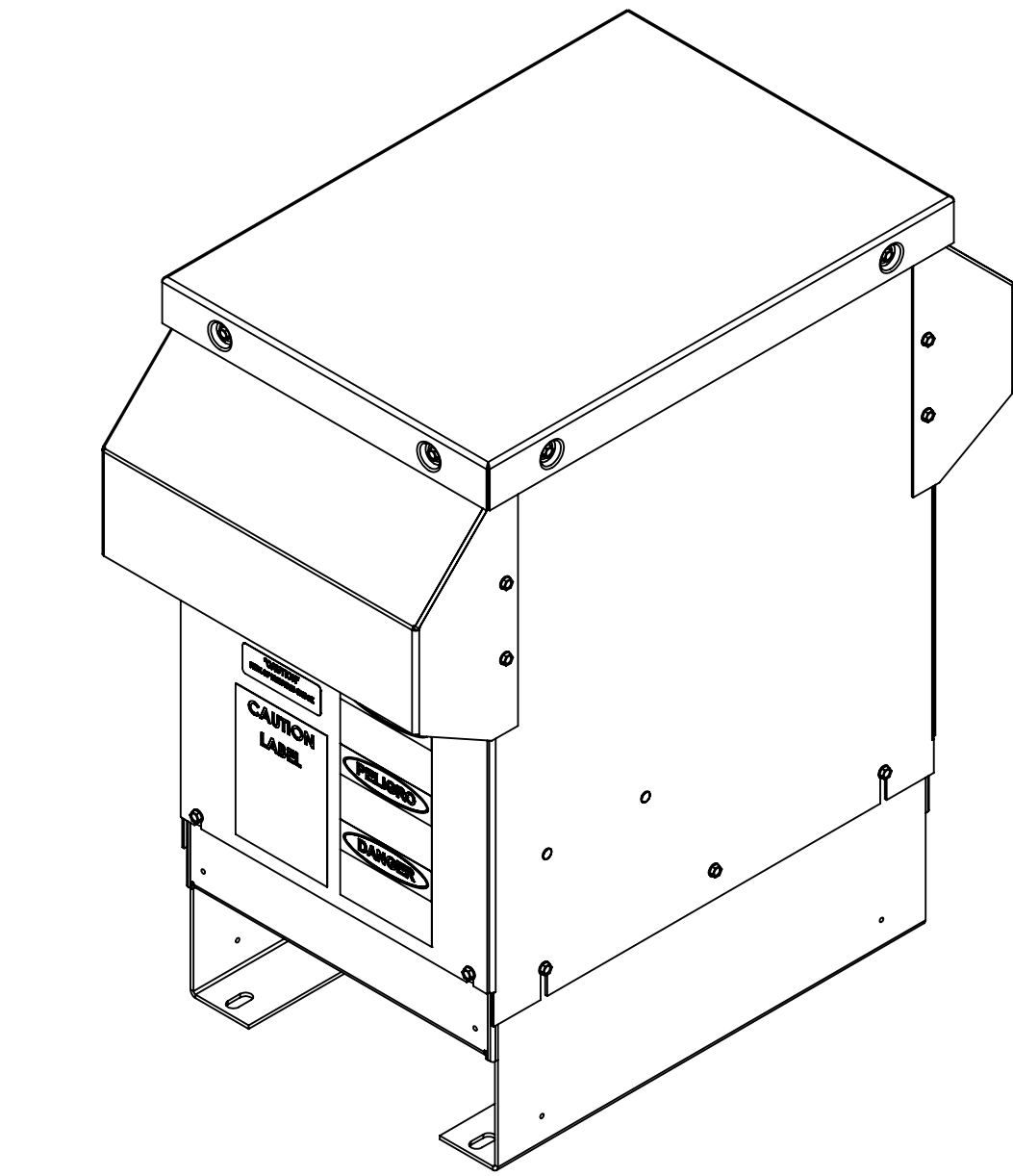
FRONT VIEW
(PANELS REMOVED)



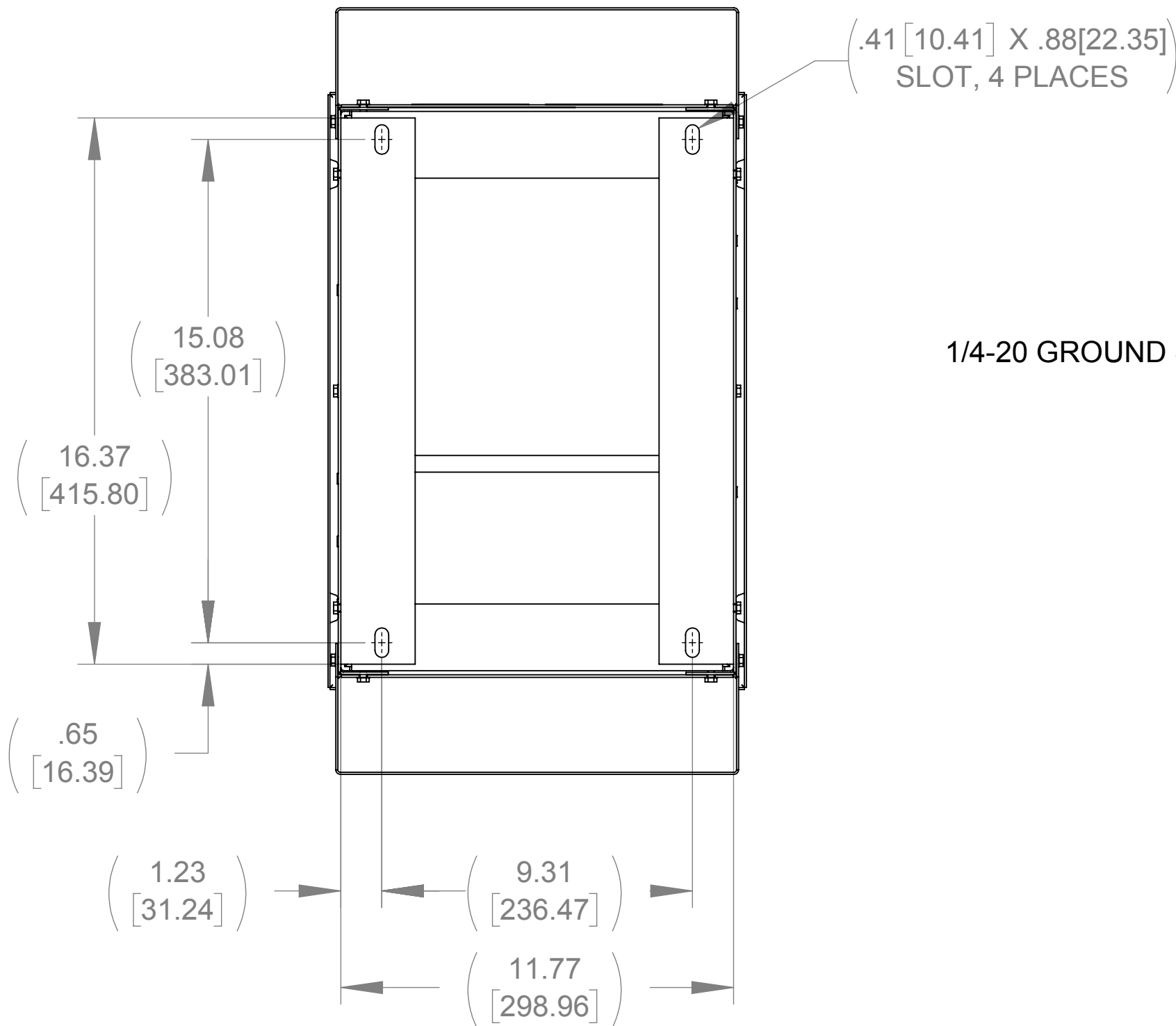
SIDE VIEW



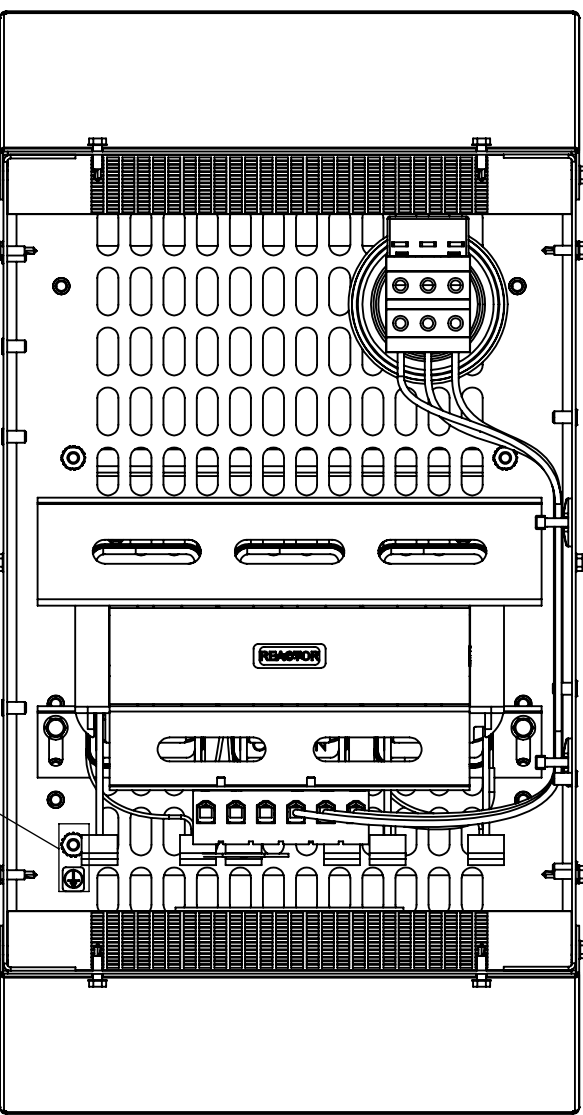
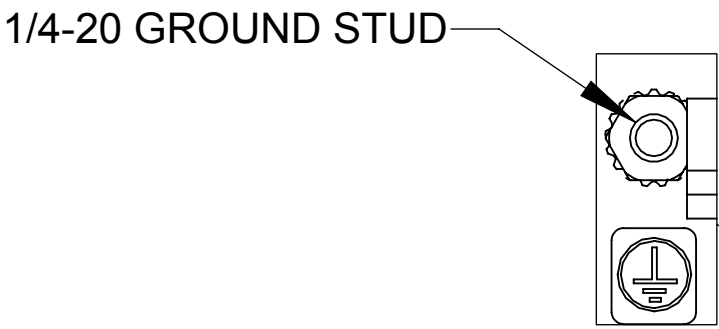
DETAIL A
CUSTOMER CONNECTION
DETAIL VIEW (THERMAL)



DETAIL B
CUSTOMER CONNECTION
DETAIL VIEW
(6 PLACES)



BOTTOM VIEW



TOP VIEW
(PANELS REMOVED)

NOTES:

1. TIGHTEN TERMINAL BLOCK SCREWS TO 16 IN/LBS. TORQUE.
2. TERMINAL WIRE SIZE: 4-14 AWG.

THE COMPONENT, PART OR ASSEMBLY DESCRIBED IN THIS DOCUMENT MUST COMPLY WITH THE EU(EUROPEAN UNION) DIRECTIVE RoHS2		MATERIAL		CONFIDENTIAL AND PROPRIETARY INFORMATION THIS DOCUMENT CONTAINS CONFIDENTIAL AND PROPRIETARY INFORMATION OF MTE CORPORATION AND MAY NOT BE USED, COPIED OR DISCLOSED TO OTHERS EXCEPT WITH THE AUTHORIZED WRITTEN PERMISSION OF MTE CORPORATION	
CONTAINS <0.1% OF ANY SVHC BY WEIGHT PER REACH REGULATION				DESCRIPTION	
UNLESS OTHERWISE SPECIFIED DIMENSIONS ARE IN INCHES [MM] TOLERANCES ARE: ANGLES: ± 1 ° 1 PLACE .X: ± .1 [2.5] 2 PLACE .XX: ± .03 [0.76] 3 PLACE .XXX: ± .010 [0.254]		MTE POWER QUALITY. SOLVED. N83 W13330 Leon Road Menomonee Falls, WI 53051 USA 800.455.4683 262.253.8200		SWG 27A 600V 2-8kHz FILTER, NEMA 3R ENCL.	
		DRAWN MN	DATE 07/26/18	SIZE D	DWG No. CD SWGW0027E
		CHECKED MN	DATE 07/26/18	REV 00	
		APPROVED TL	DATE 10/09/18	SCALE 1:4	SHEET 1 OF 1