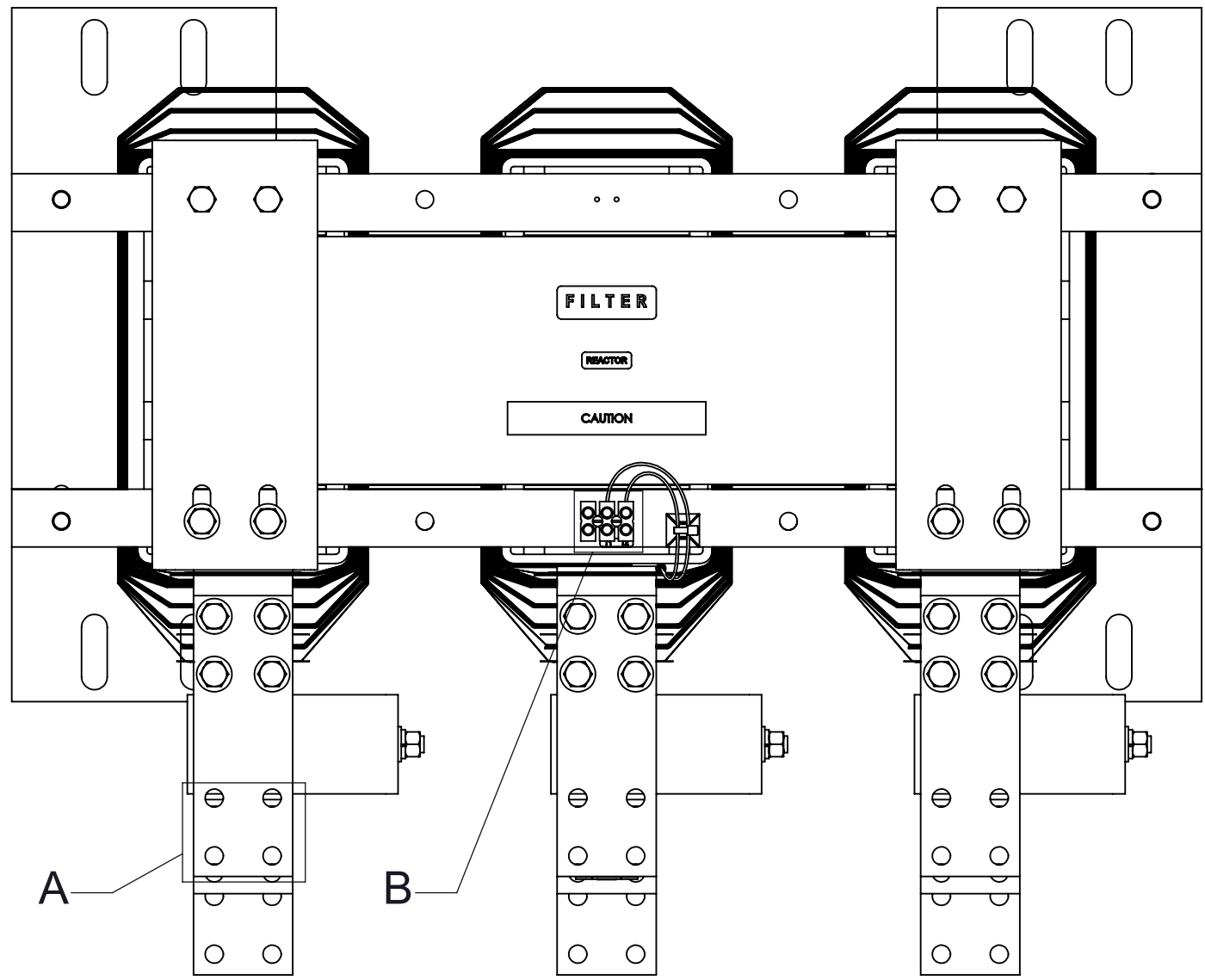
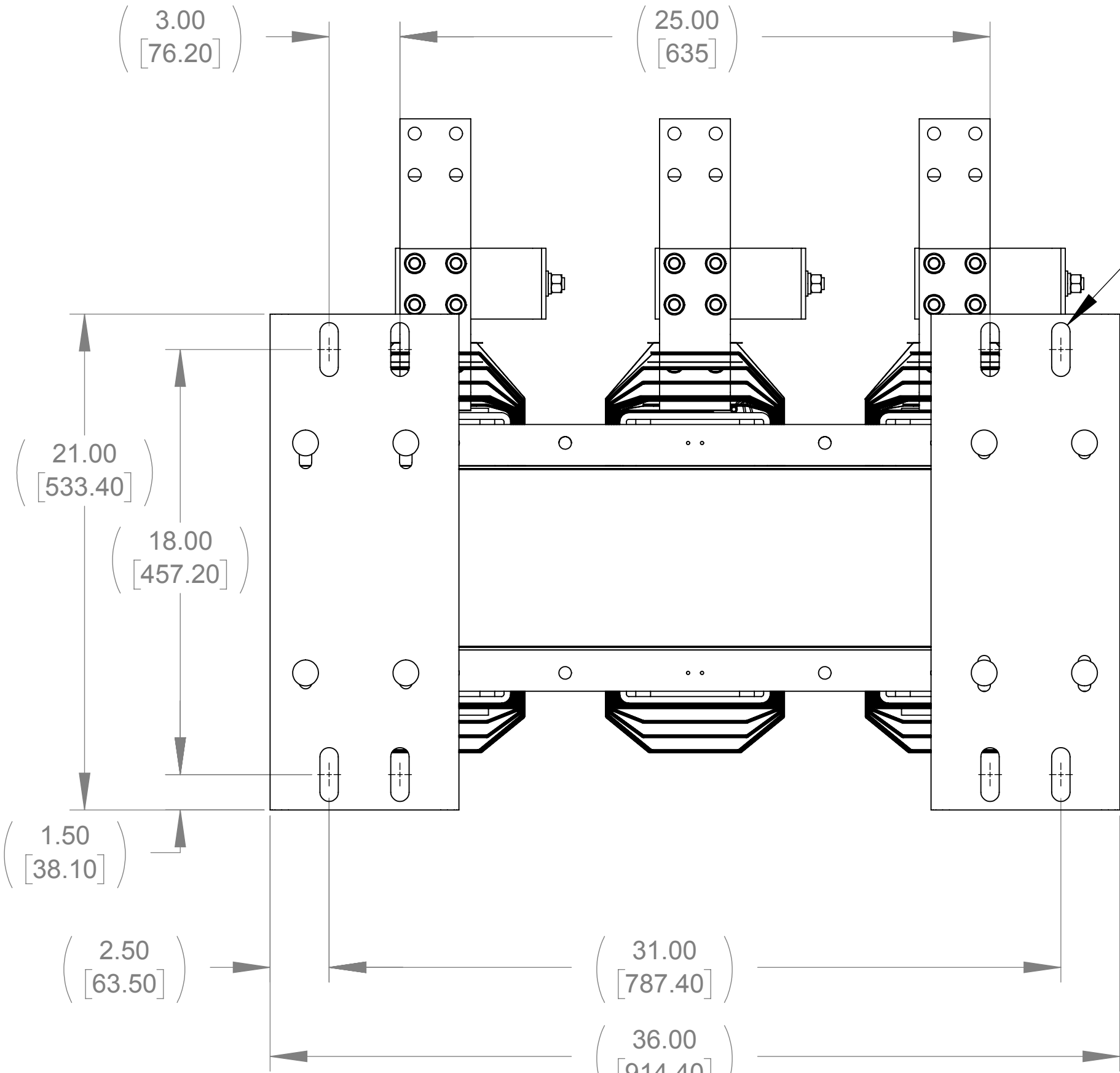


APPROX. WEIGHT
(LBS)
1896.98

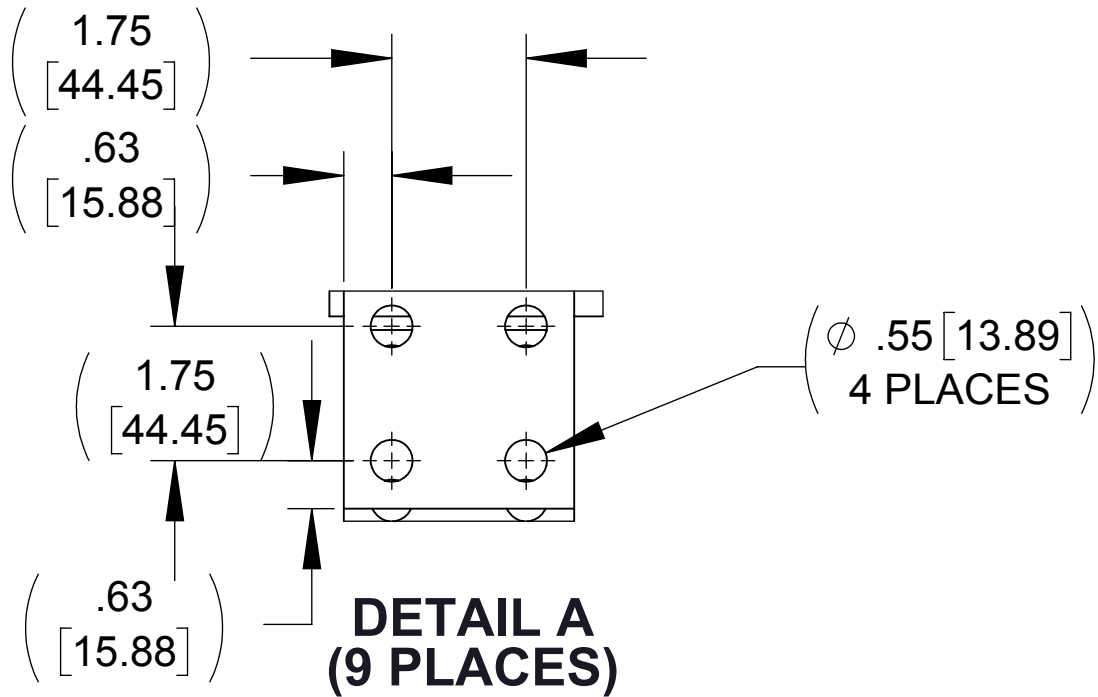
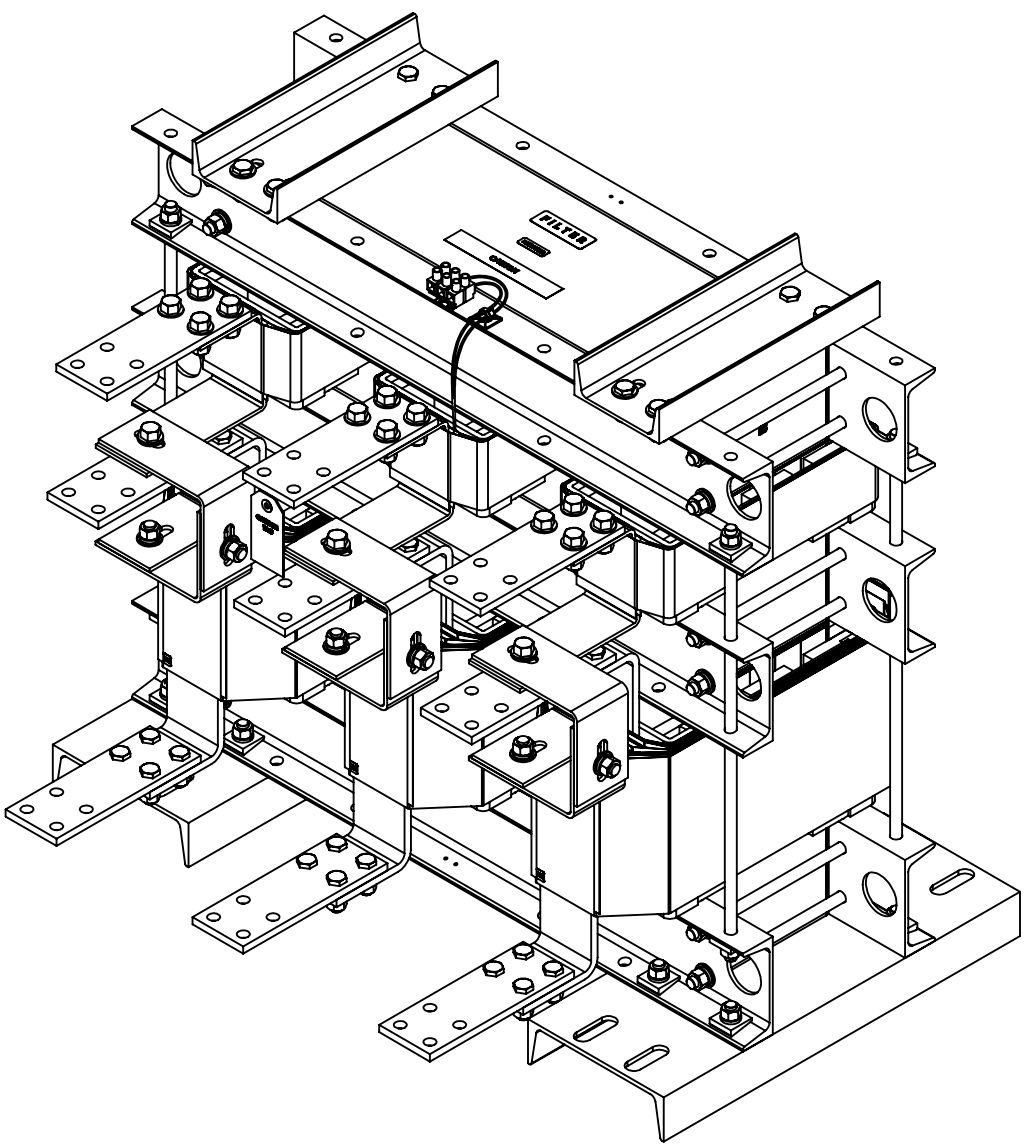
ECO No	DESCRIPTION	REV BY	DATE



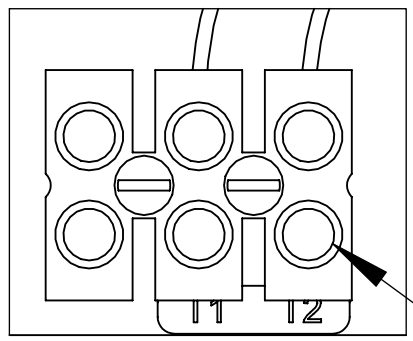
TOP VIEW



BOTTOM VIEW



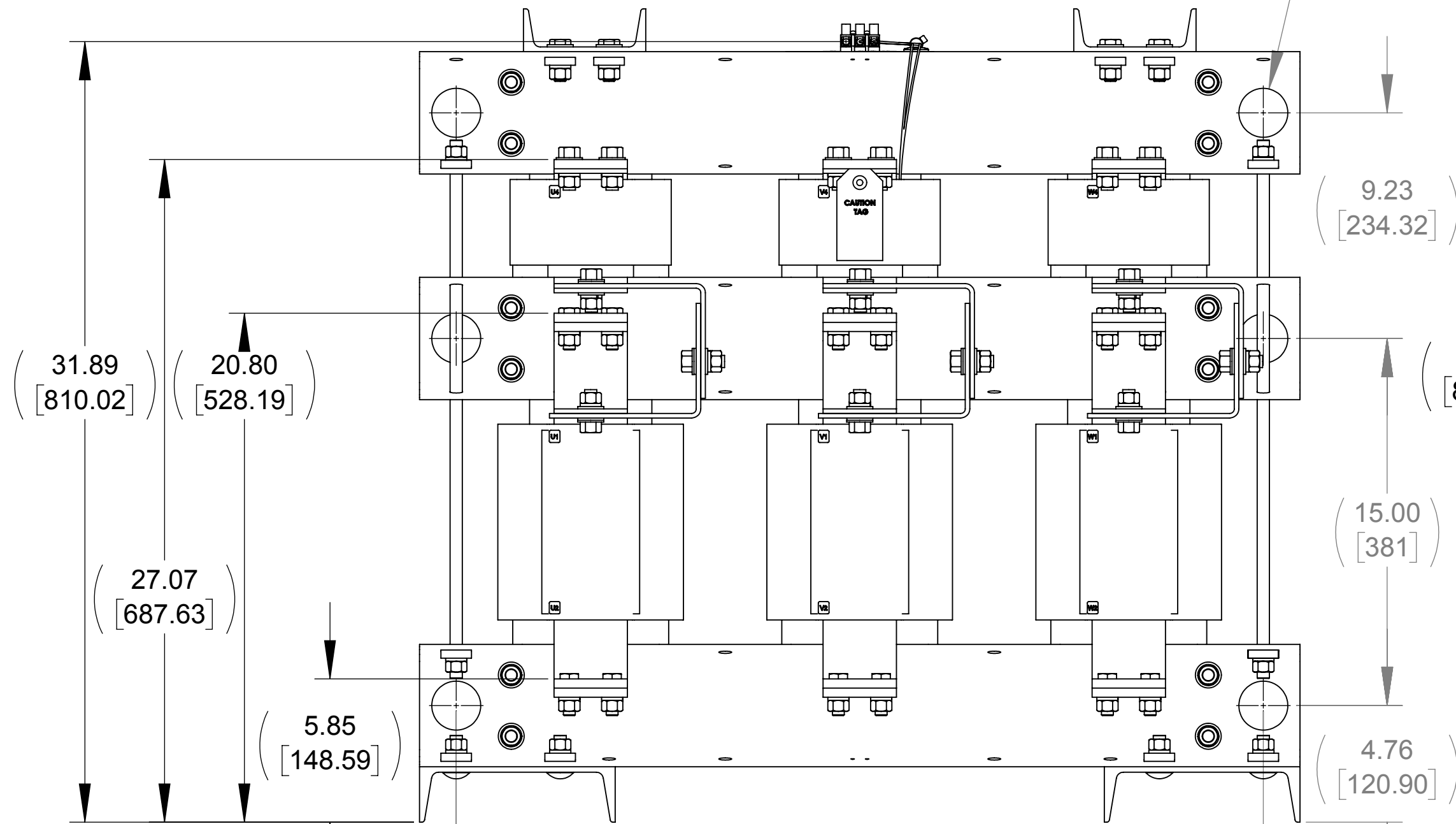
DETAIL A
(9 PLACES)



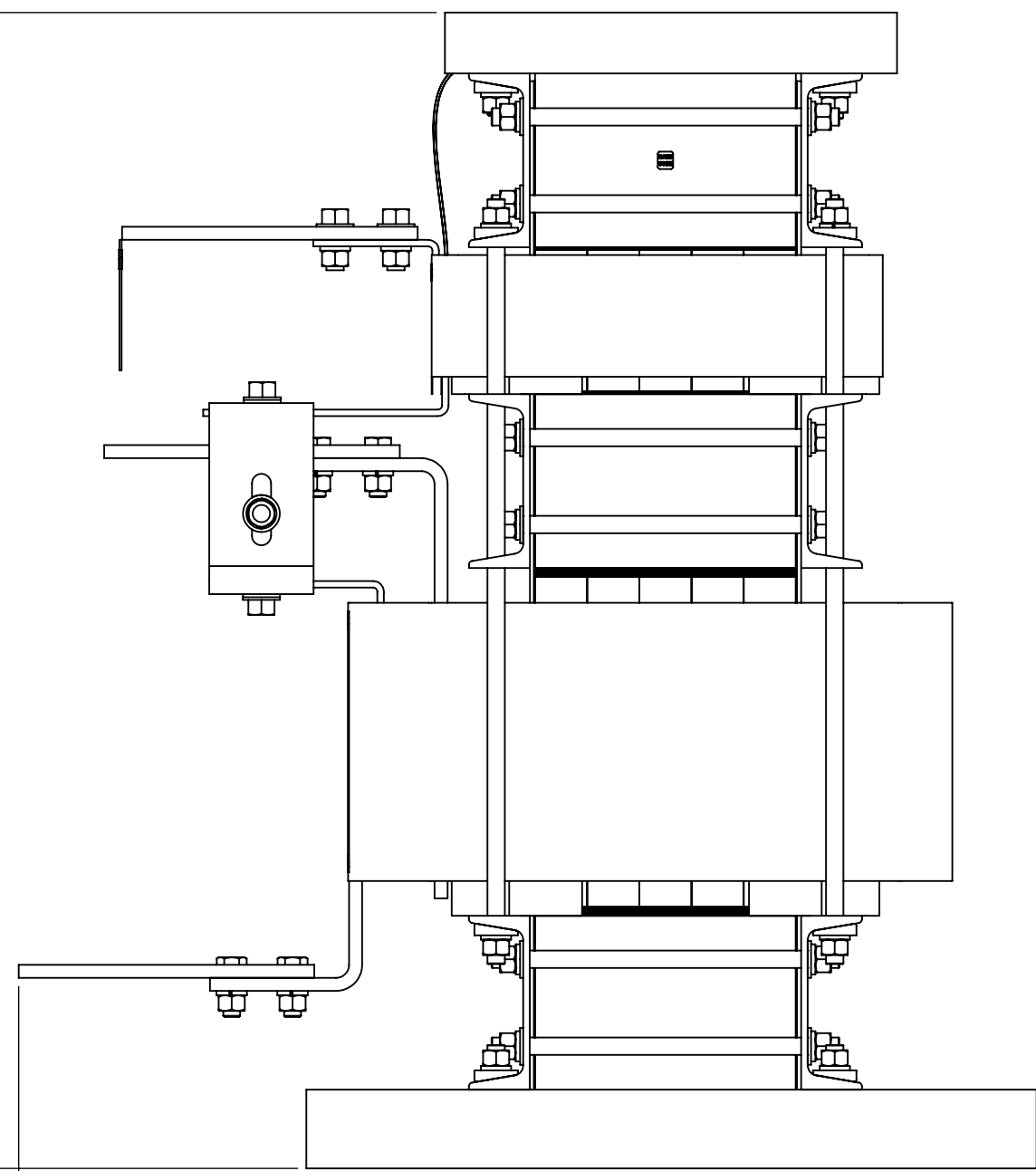
DETAIL B
CUSTOMER CONNECTION
DETAIL VIEW (THERMAL)

SEE NOTES 1 & 2

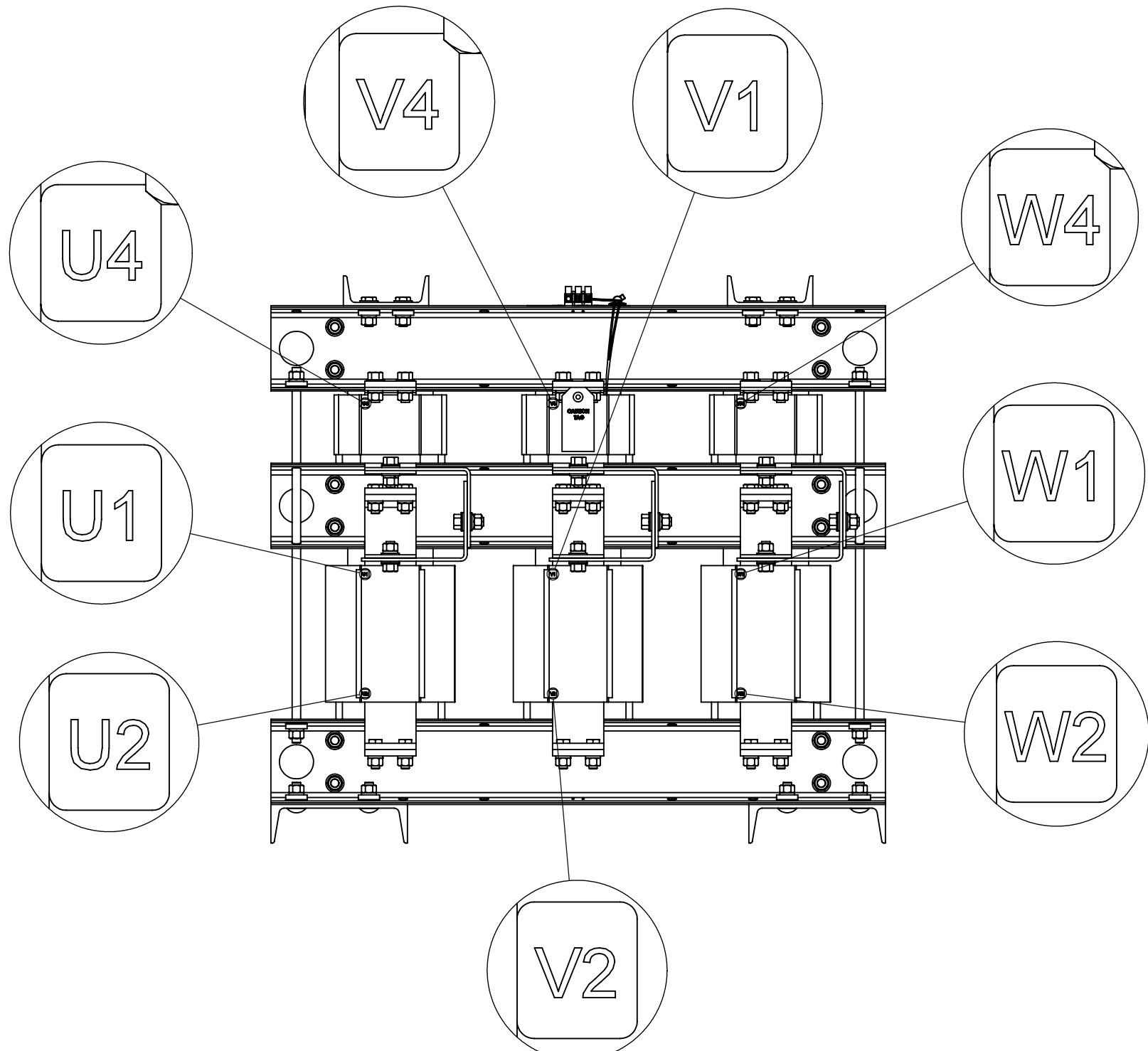
Ø 2.00 [50.80] THRU
12 PLACES



FRONT VIEW



SIDE VIEW



CUSTOMER CONNECTION
DETAIL VIEW

NOTES:

1. TERMINAL WIRE RANGE: 4-14 AWG
2. TERMINAL SCREW TIGHTENING TORQUE: 16 IN.LBS.
3. REFER TO USER MANUAL FOR COMPLETE INSTALLATION INSTRUCTIONS
4. FILTER INCLUDES: CAPPANEL-161 (QTY. 5) AND CAP-532SW (QTY. 1)

THE COMPONENT, PART OR ASSEMBLY DESCRIBED IN THIS DOCUMENT MUST COMPLY WITH THE EU(EUROPEAN UNION) DIRECTIVE RoHS2		MATERIAL		CONFIDENTIAL AND PROPRIETARY INFORMATION THIS DOCUMENT CONTAINS CONFIDENTIAL AND PROPRIETARY INFORMATION OF MTE CORPORATION AND MAY NOT BE USED, COPIED OR DISCLOSED TO OTHERS EXCEPT WITH THE AUTHORIZED WRITTEN PERMISSION OF MTE CORPORATION		
CONTAINS <0.1% OF ANY SVHC BY WEIGHT PER REACH REGULATION				DESCRIPTION		
UNLESS OTHERWISE SPECIFIED DIMENSIONS ARE IN INCHES [MM] TOLERANCES ARE: ANGLES: ± 1 ° 1 PLACE .X: ± .1 [2.5] 2 PLACE .XX: ± .03 [0.76] 3 PLACE .XXX: ± .010 [0.254]		MTE POWER QUALITY. SOLVED. N83 W13330 Leon Road Menomonee Falls, WI 53051 USA 800.455-4683 262.253-8200		SWG 1500A 600V 2-8kHz FILTER, OPEN PANEL		
DRAWN MN		DATE 10/03/18		SIZE D		
CHECKED MN		DATE 10/03/18		DWG No. CD SWGM1500E		
APPROVED TL		DATE 10/09/18		REV 00		
SCALE 1:5				SHEET 1 OF 1		