

APPROX. WEIGHT
(LBS)
1341

ECO No	DESCRIPTION	REV BY	DATE

D

C

B

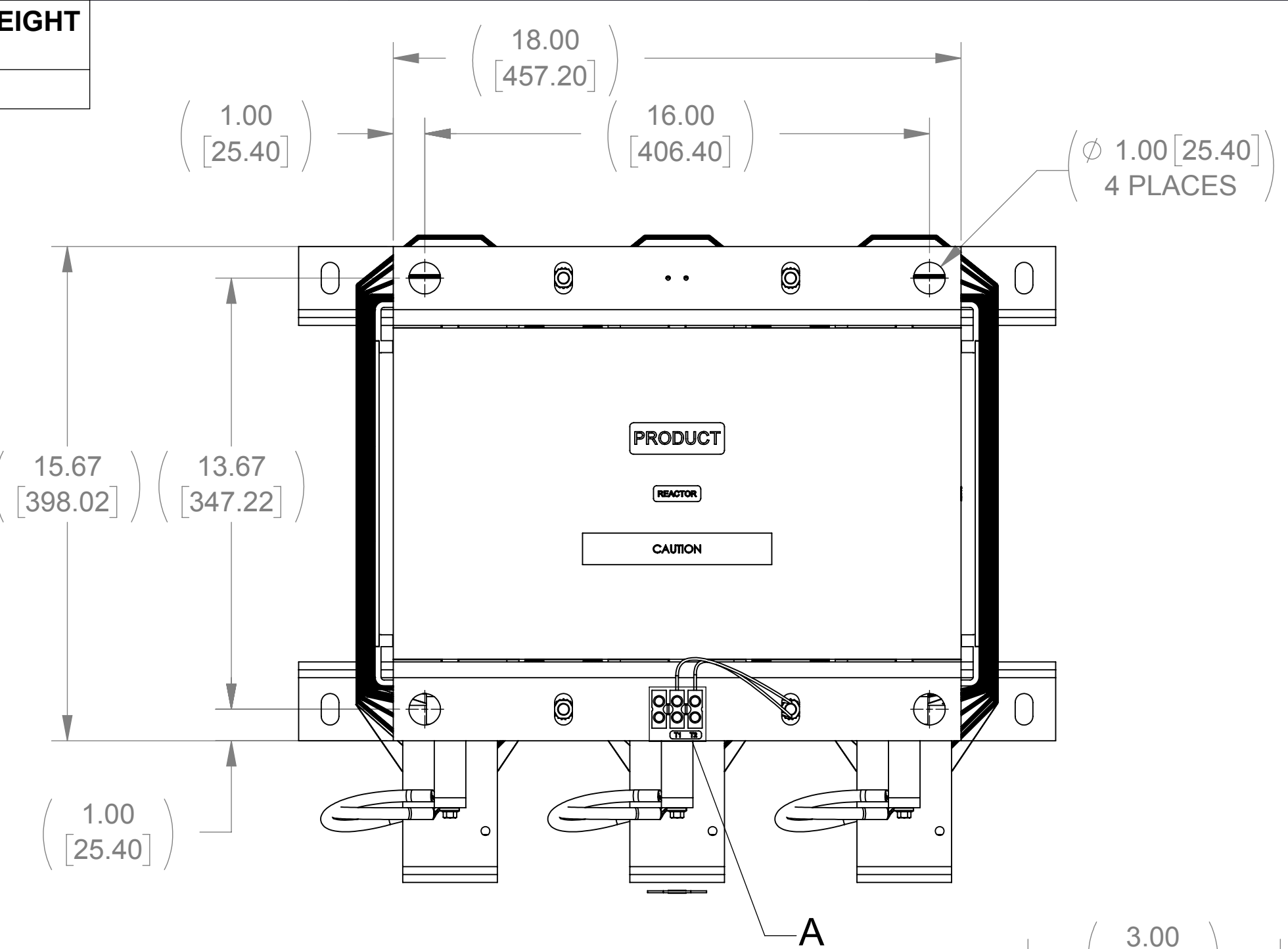
A

D

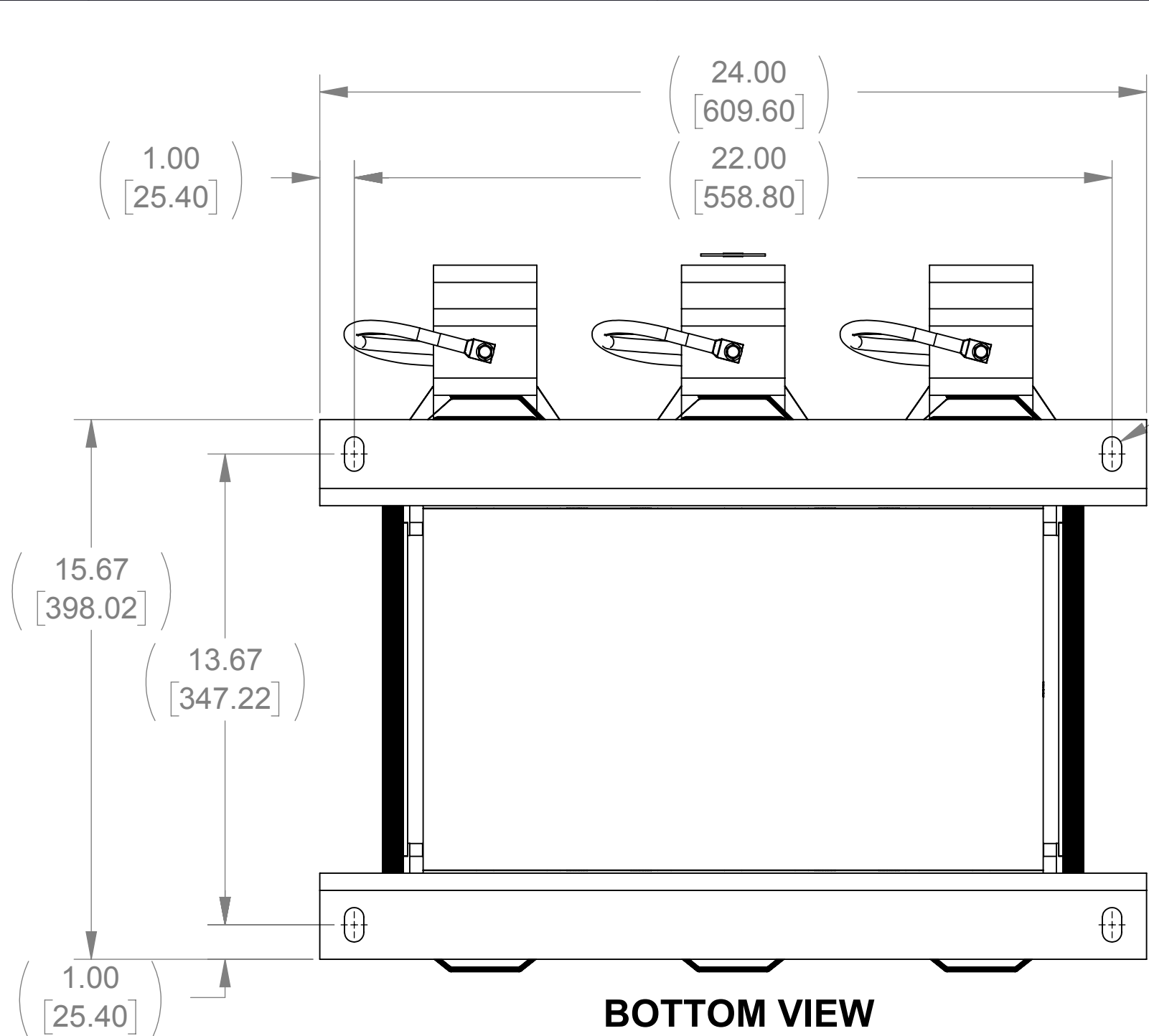
C

B

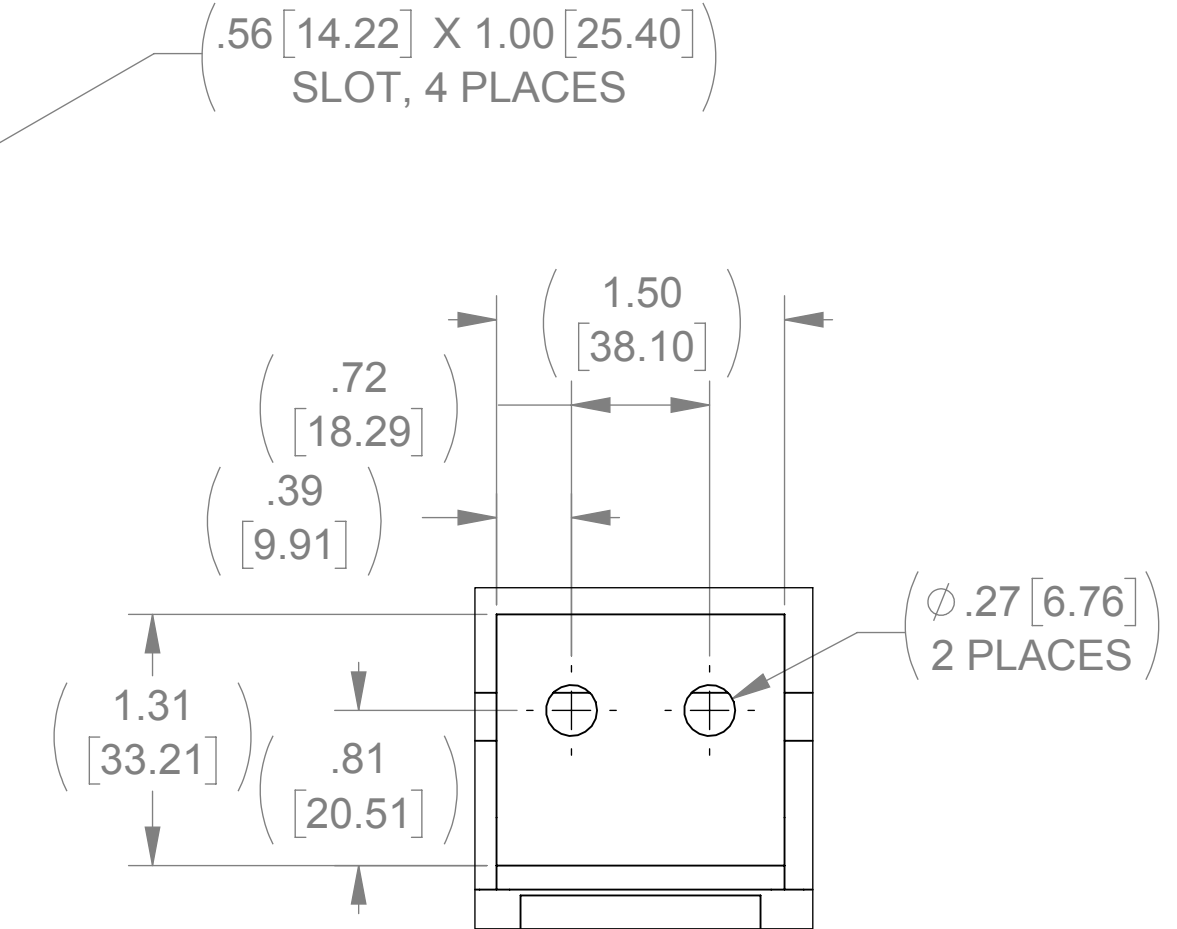
A



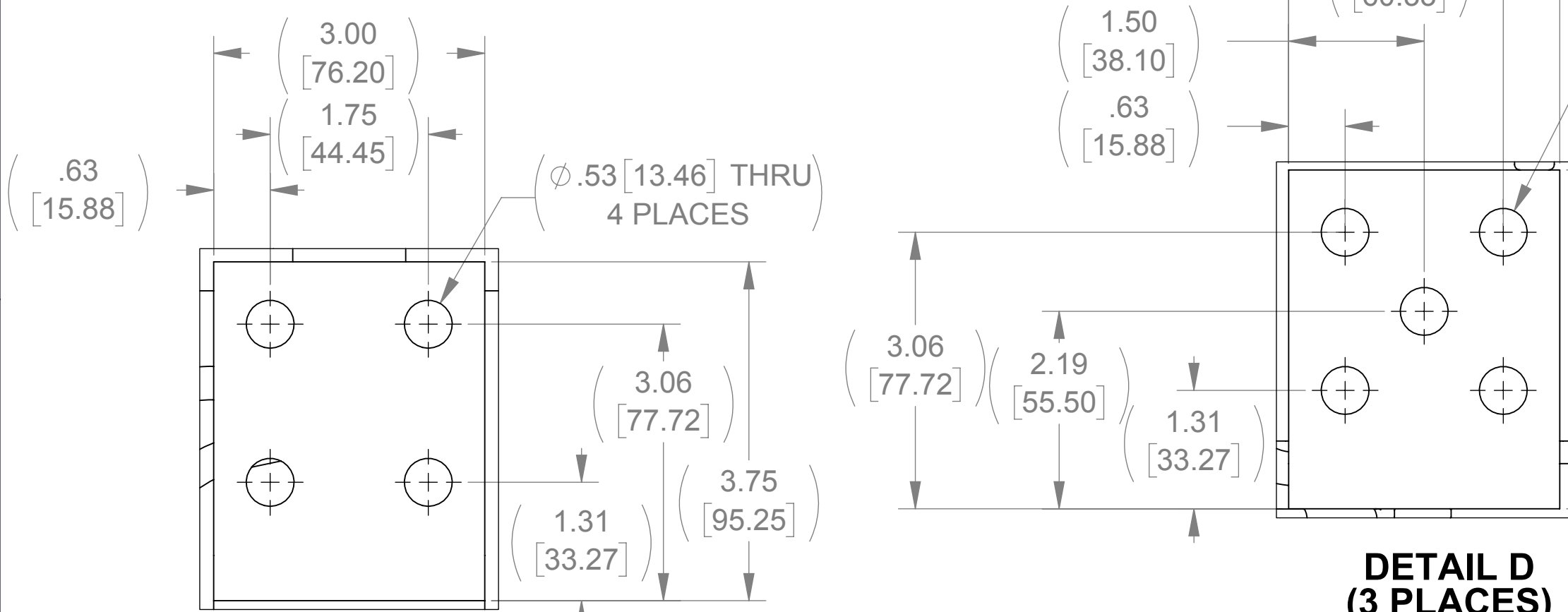
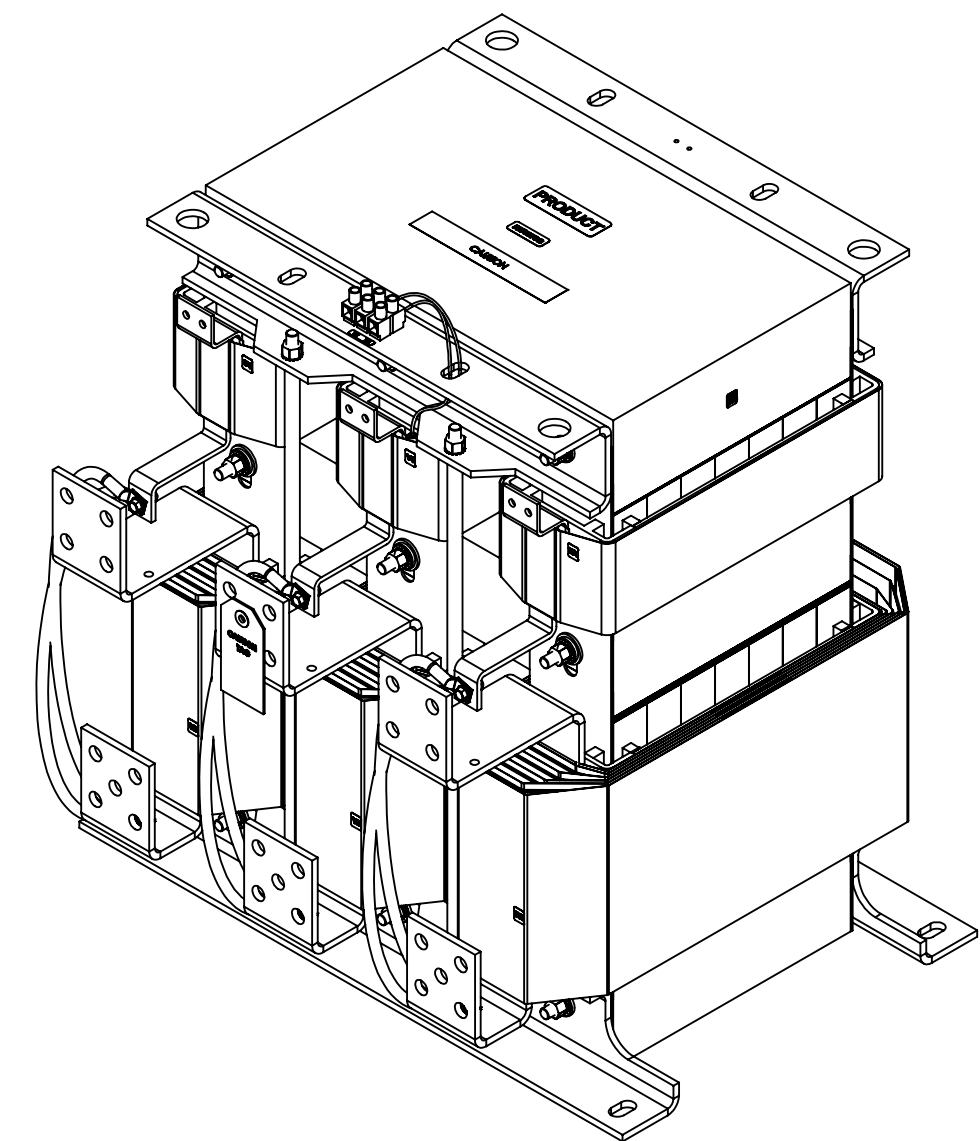
TOP VIEW



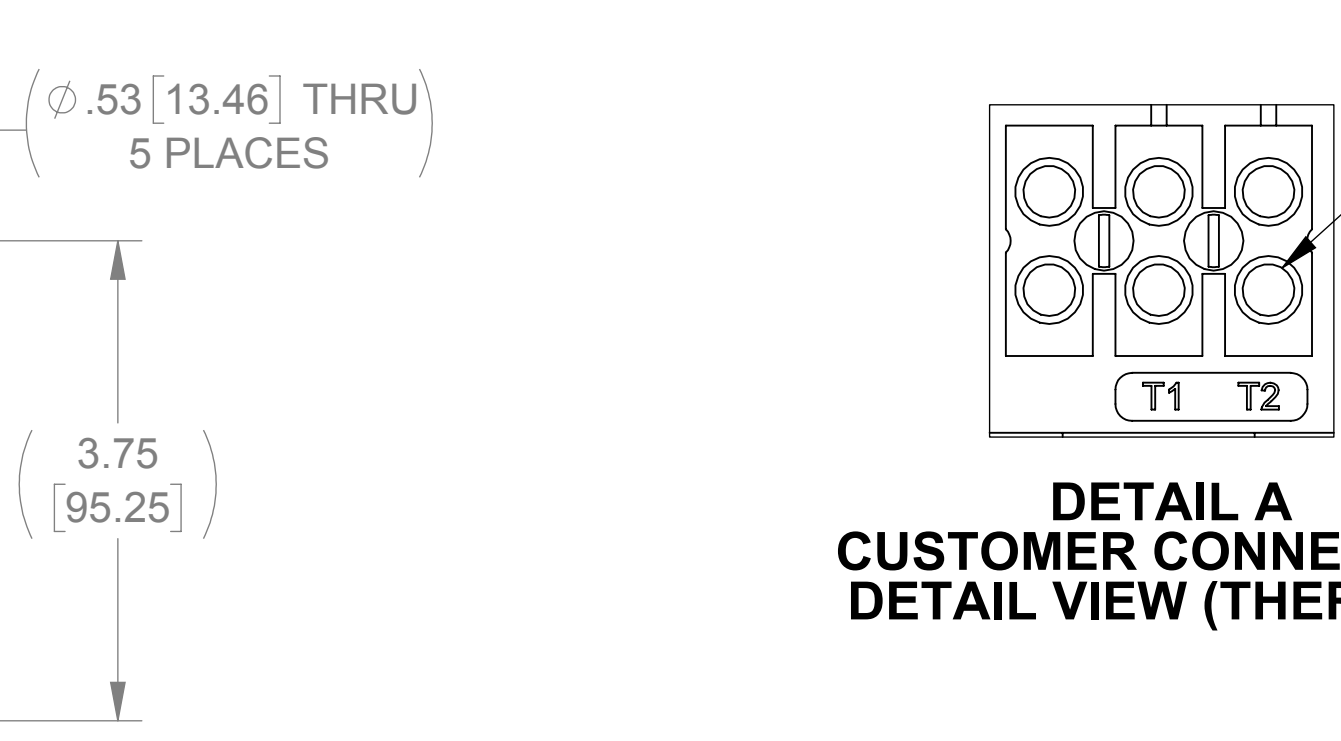
BOTTOM VIEW



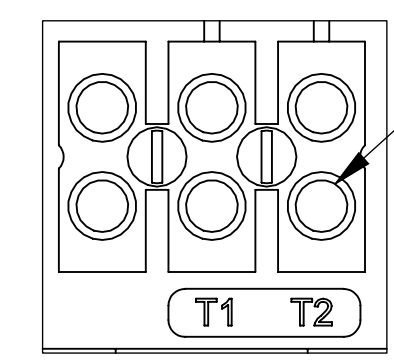
DETAIL B
(3 PLACES)



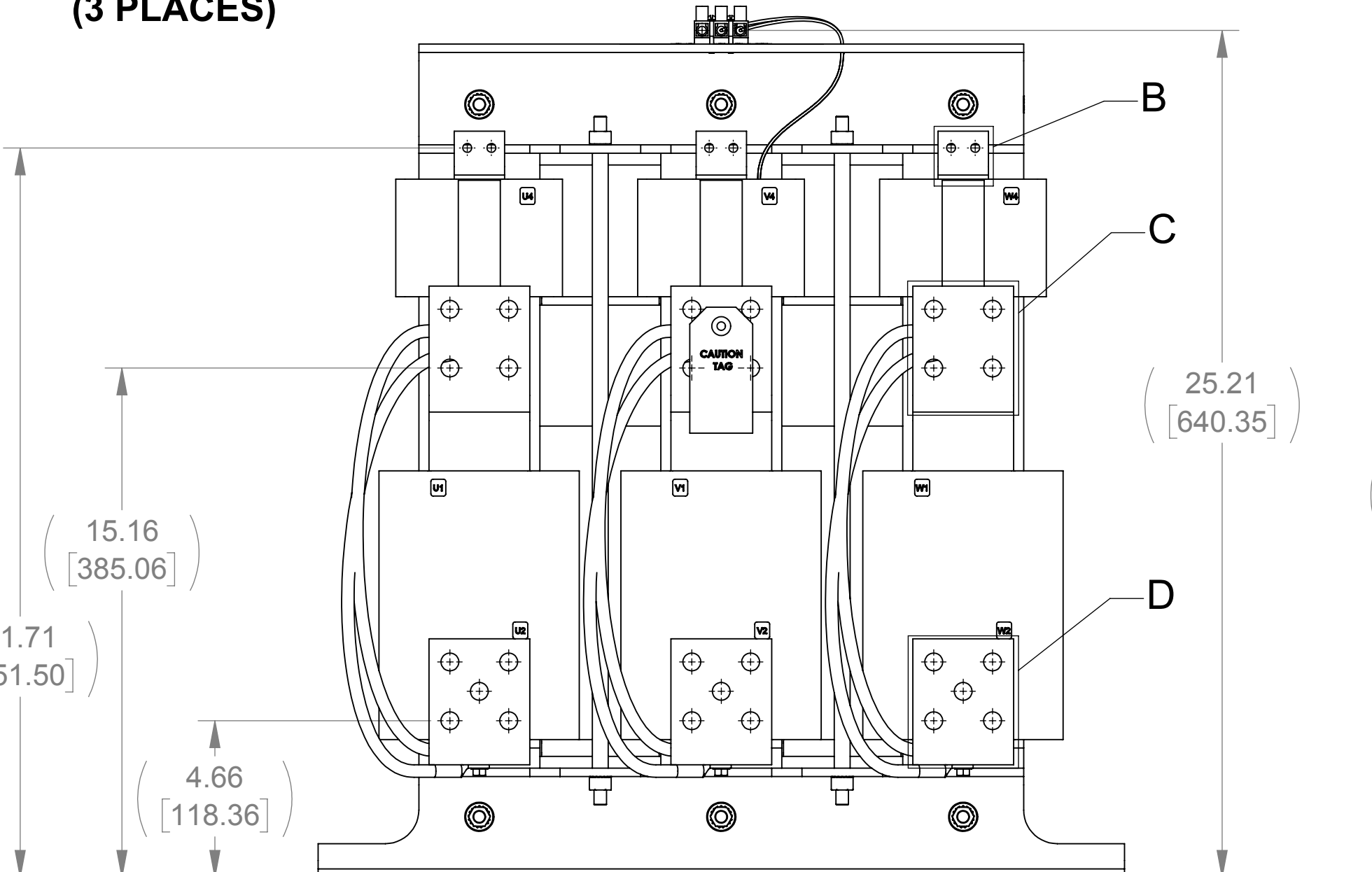
DETAIL C
(3 PLACES)



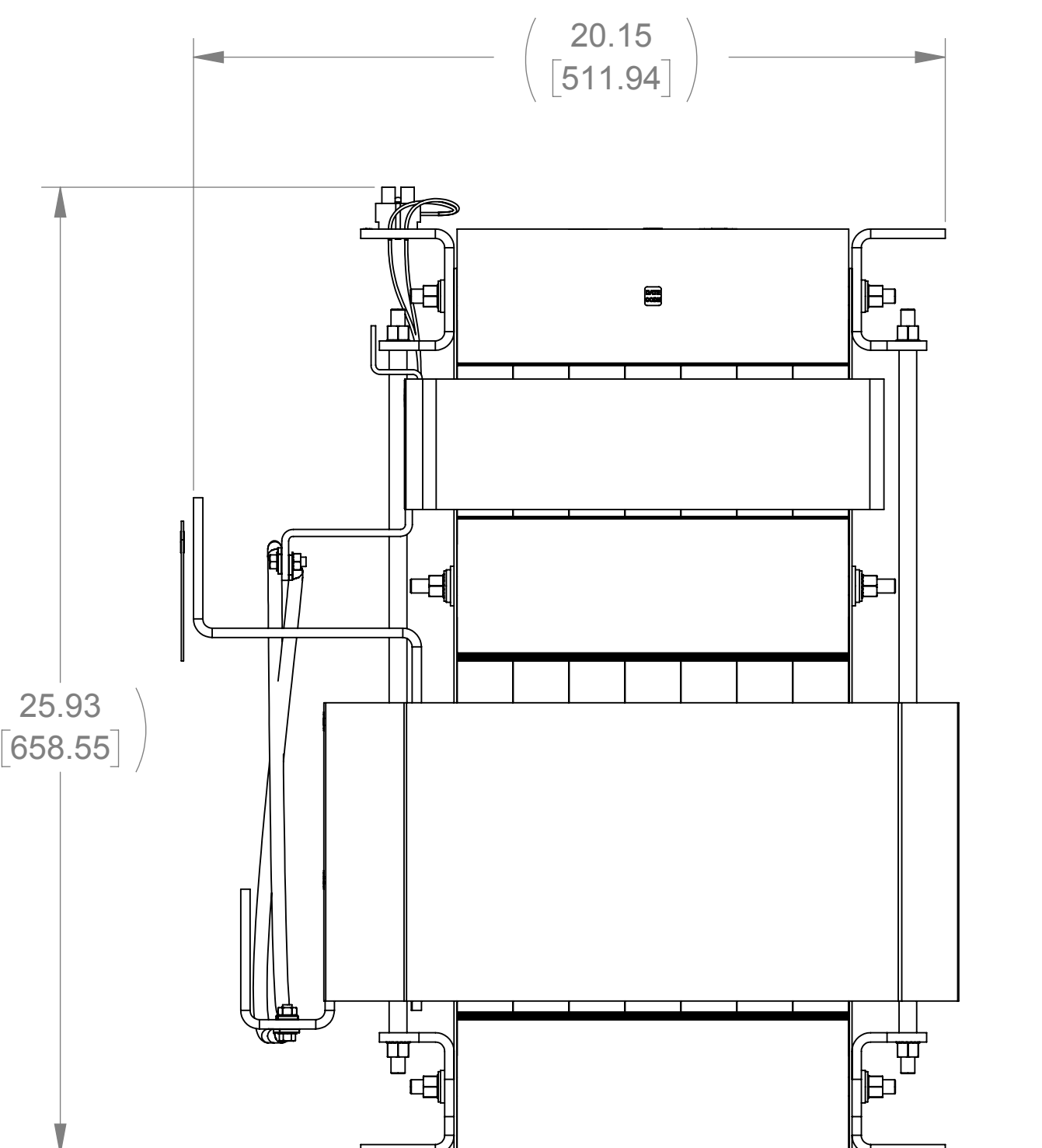
DETAIL D
(3 PLACES)



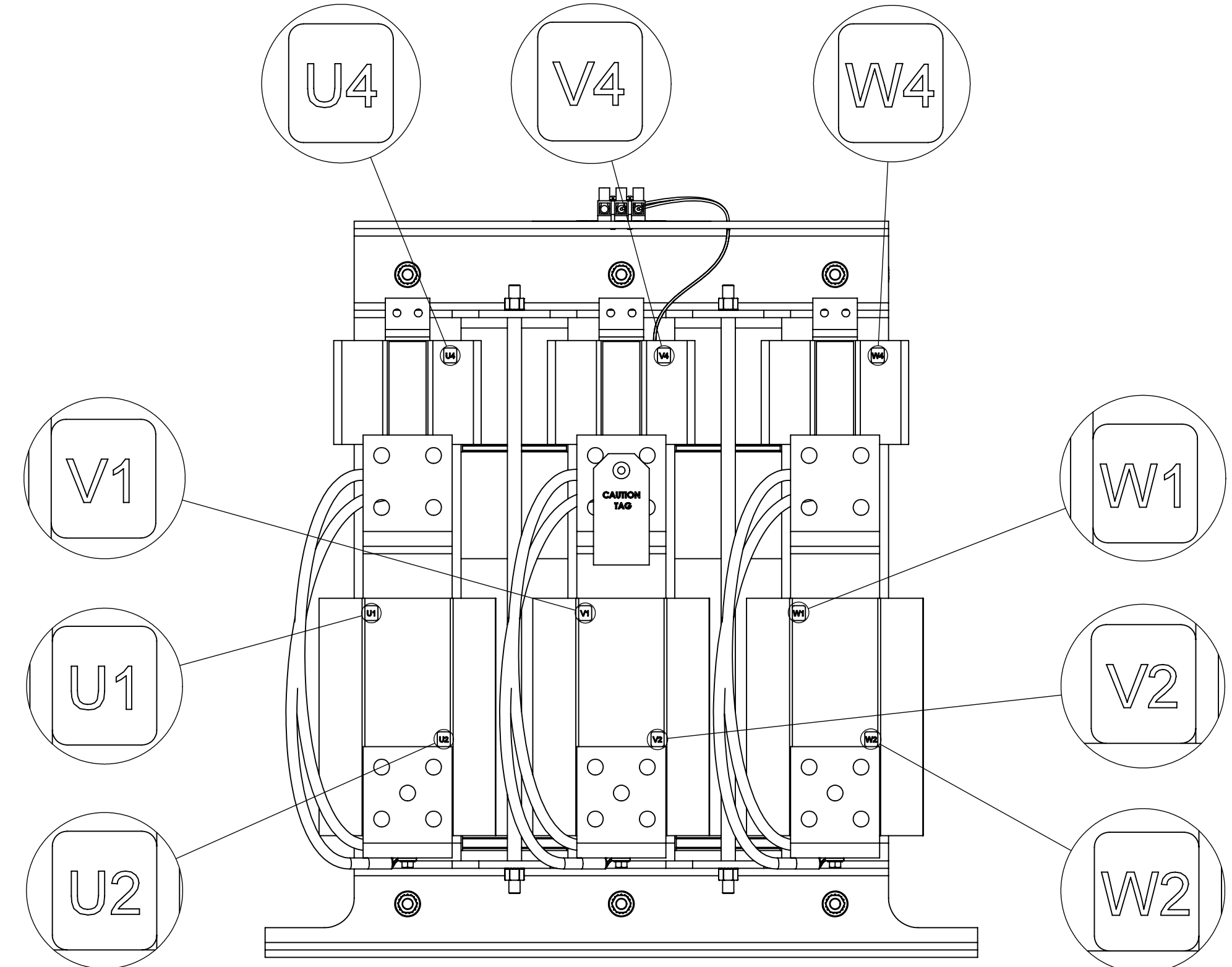
DETAIL A
CUSTOMER CONNECTION
DETAIL VIEW (THERMAL)



FRONT VIEW



SIDE VIEW



CUSTOMER CONNECTION
DETAIL VIEW

NOTES:

1. TERMINAL SCREW TIGHTENING TORQUE: 16 IN/LBS.
2. WIRE RANGE: 4 - 14 AWG.
3. FILTER INCLUDES CAPPANEL-161 (QTY. 4) & CAP-533SW (QTY. 1).

THE COMPONENT, PART OR ASSEMBLY DESCRIBED IN THIS DOCUMENT MUST COMPLY WITH THE EU(EUROPEAN UNION) DIRECTIVE RoHS2		MATERIAL		CONFIDENTIAL AND PROPRIETARY INFORMATION THIS DOCUMENT CONTAINS CONFIDENTIAL AND PROPRIETARY INFORMATION OF MTE CORPORATION AND MAY NOT BE USED, COPIED OR DISCLOSED TO OTHERS EXCEPT WITH THE AUTHORIZED WRITTEN PERMISSION OF MTE CORPORATION	
CONTAINS <0.1% OF ANY SVHC BY WEIGHT PER REACH REGULATION				DESCRIPTION	
UNLESS OTHERWISE SPECIFIED DIMENSIONS ARE IN INCHES [MM] TOLERANCES ARE: ANGLES: ± 1 ° 1 PLACE .X: ± .1 [2.5] 2 PLACE .XX: ± .03 [0.76] 3 PLACE .XXX: ± .010 [0.254]		MTE POWER QUALITY. SOLVED. N83 W13330 Leon Road Menomonee Falls, WI 53051 USA 800.455-4683 262.253.8200		SWG 1200A 600V 2-8kHz FILTER, OPEN PANEL	
DRAWN MN		DATE 03/07/16		SIZE D	
CHECKED MN		DATE 10/01/18		DWG No. CD SWGM1200E	
APPROVED TL		DATE 10/09/18		REV 00	
SCALE 1:4				SHEET 1 OF 1	