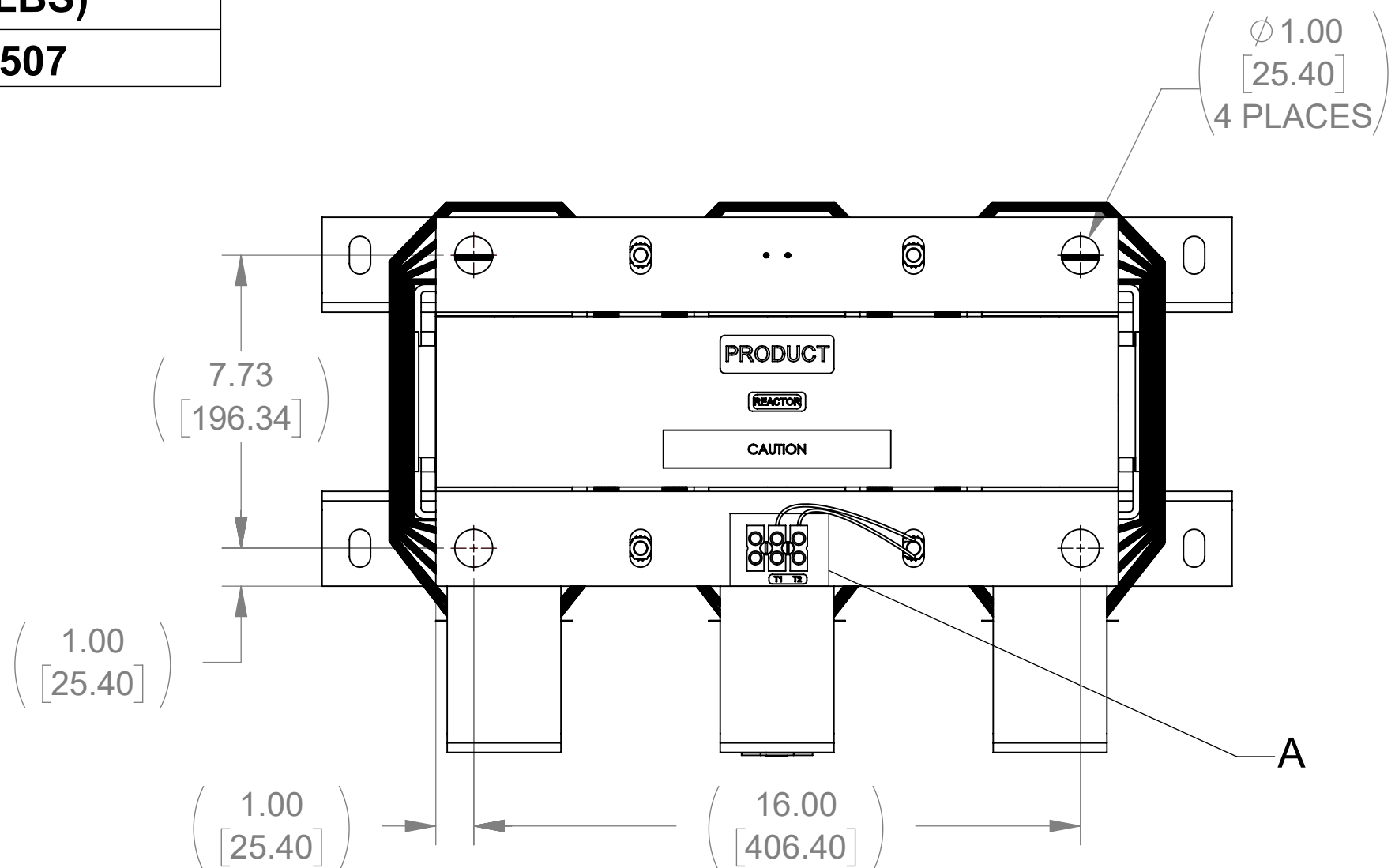
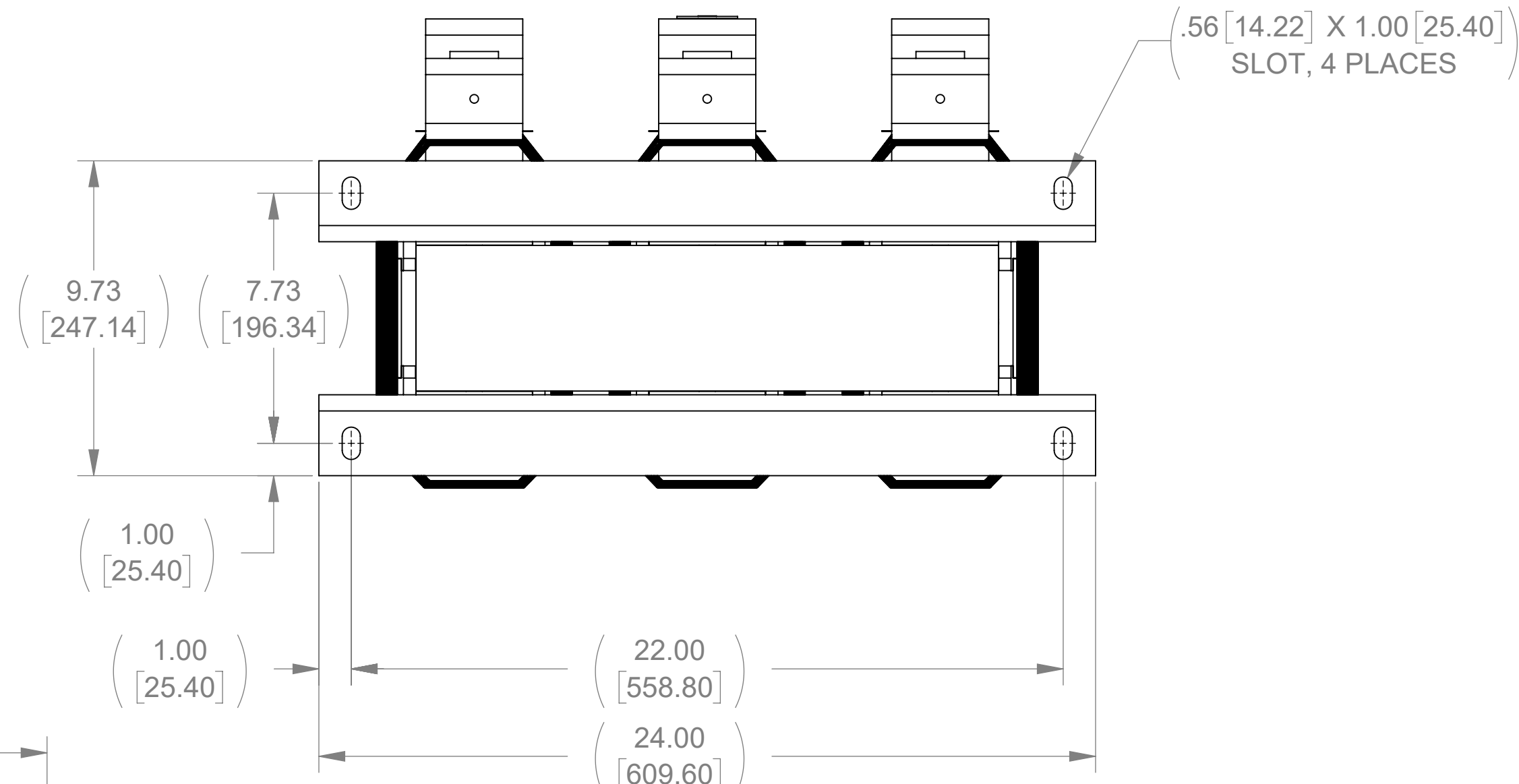


APPROX. WEIGHT  
(LBS)  
507

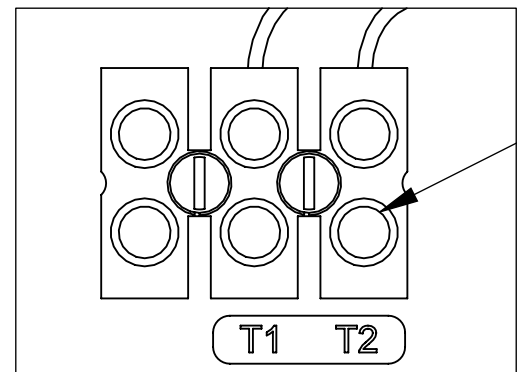
ECO No	DESCRIPTION	REV BY	DATE



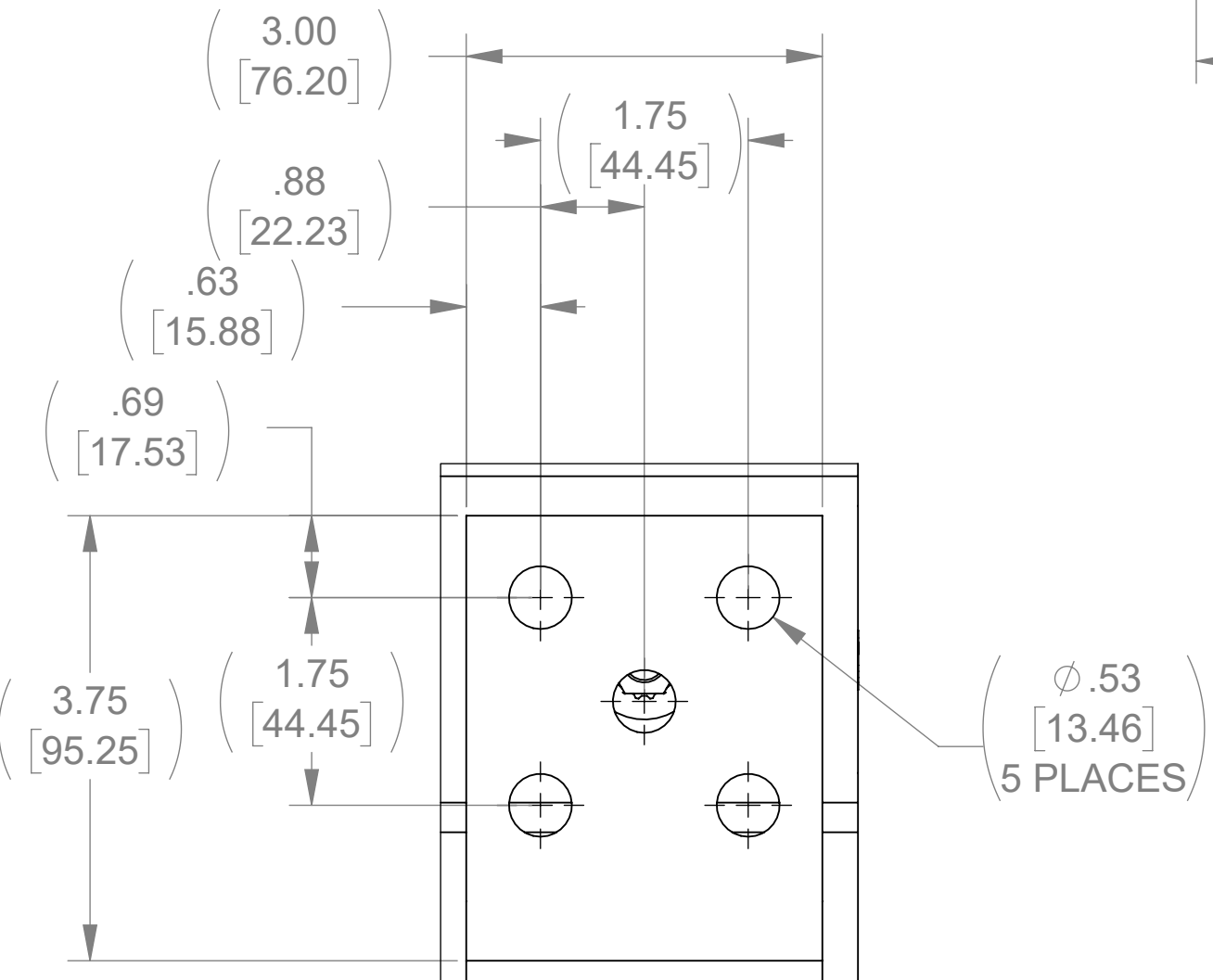
TOP VIEW



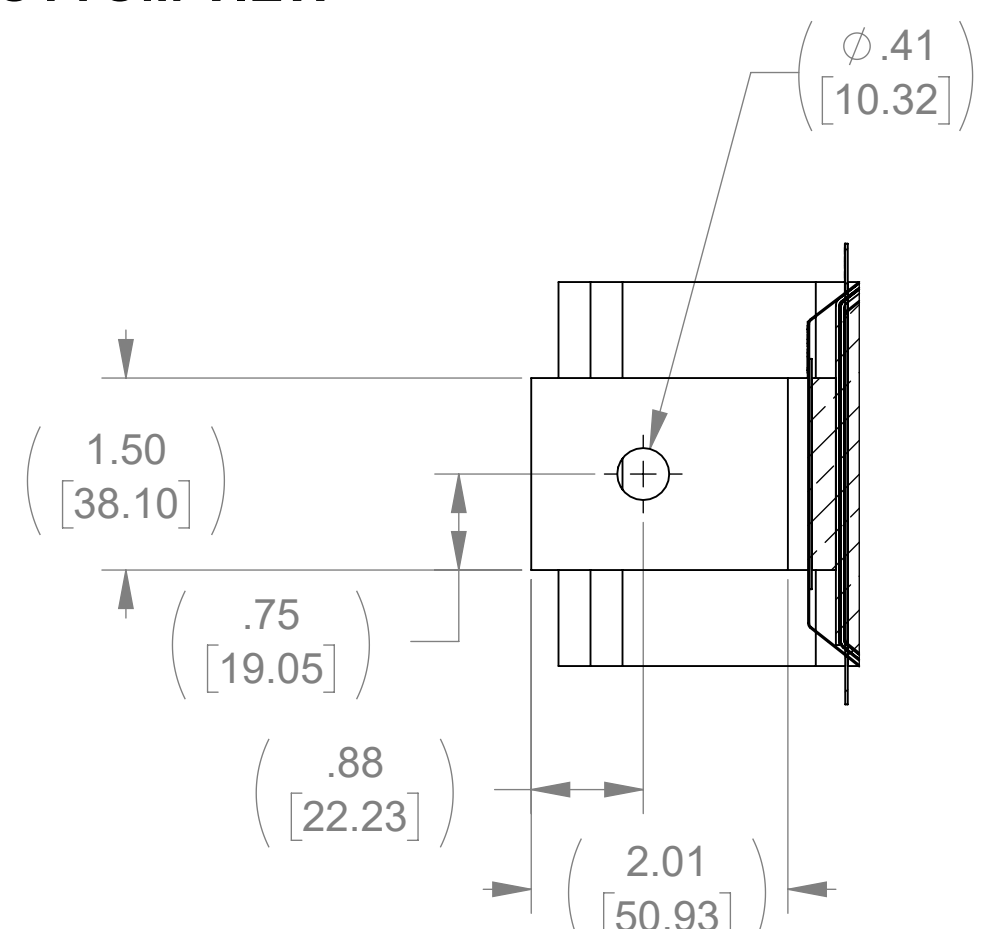
BOTTOM VIEW



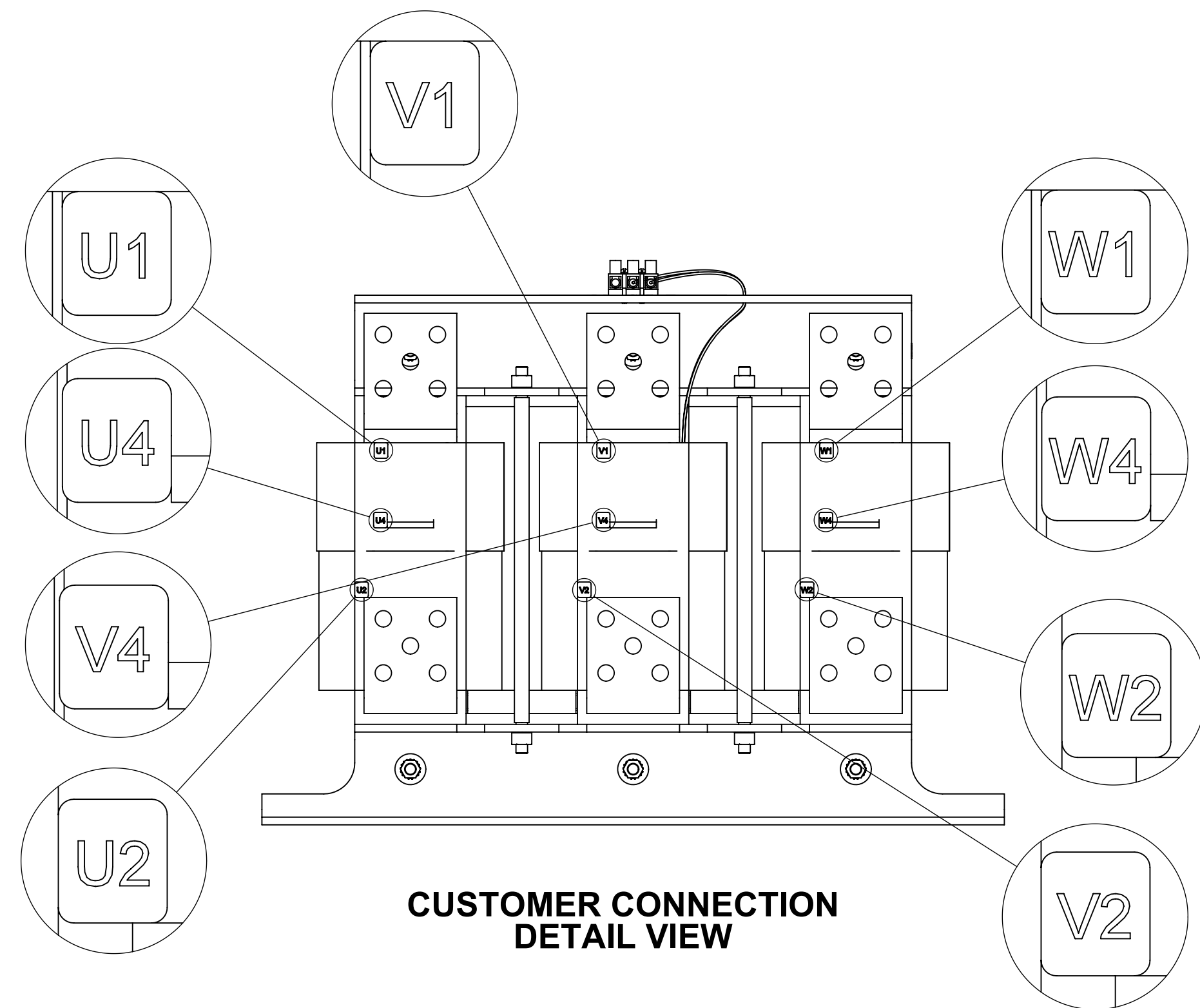
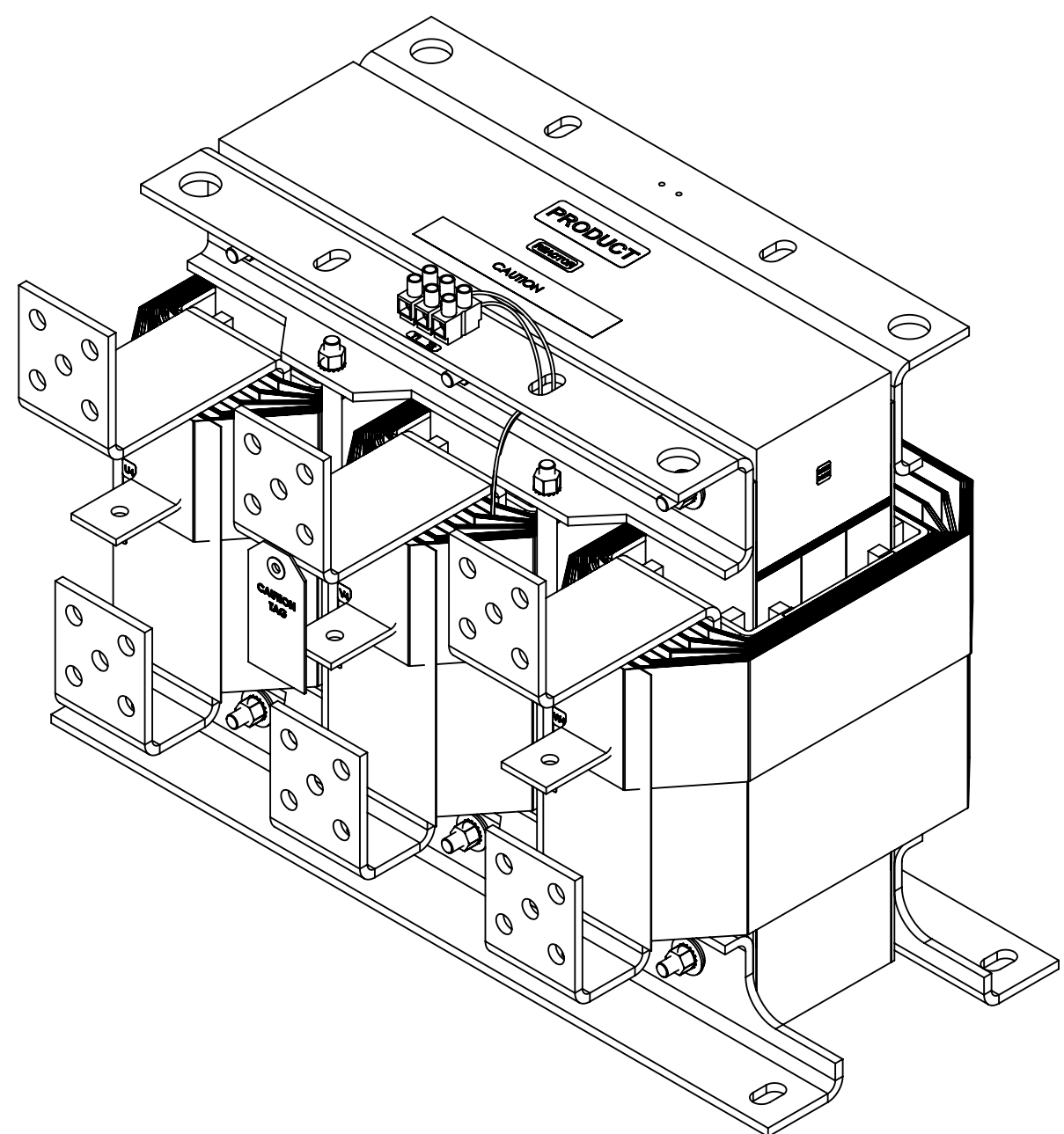
DETAIL A  
CUSTOMER CONNECTION  
DETAIL VIEW (THERMAL)



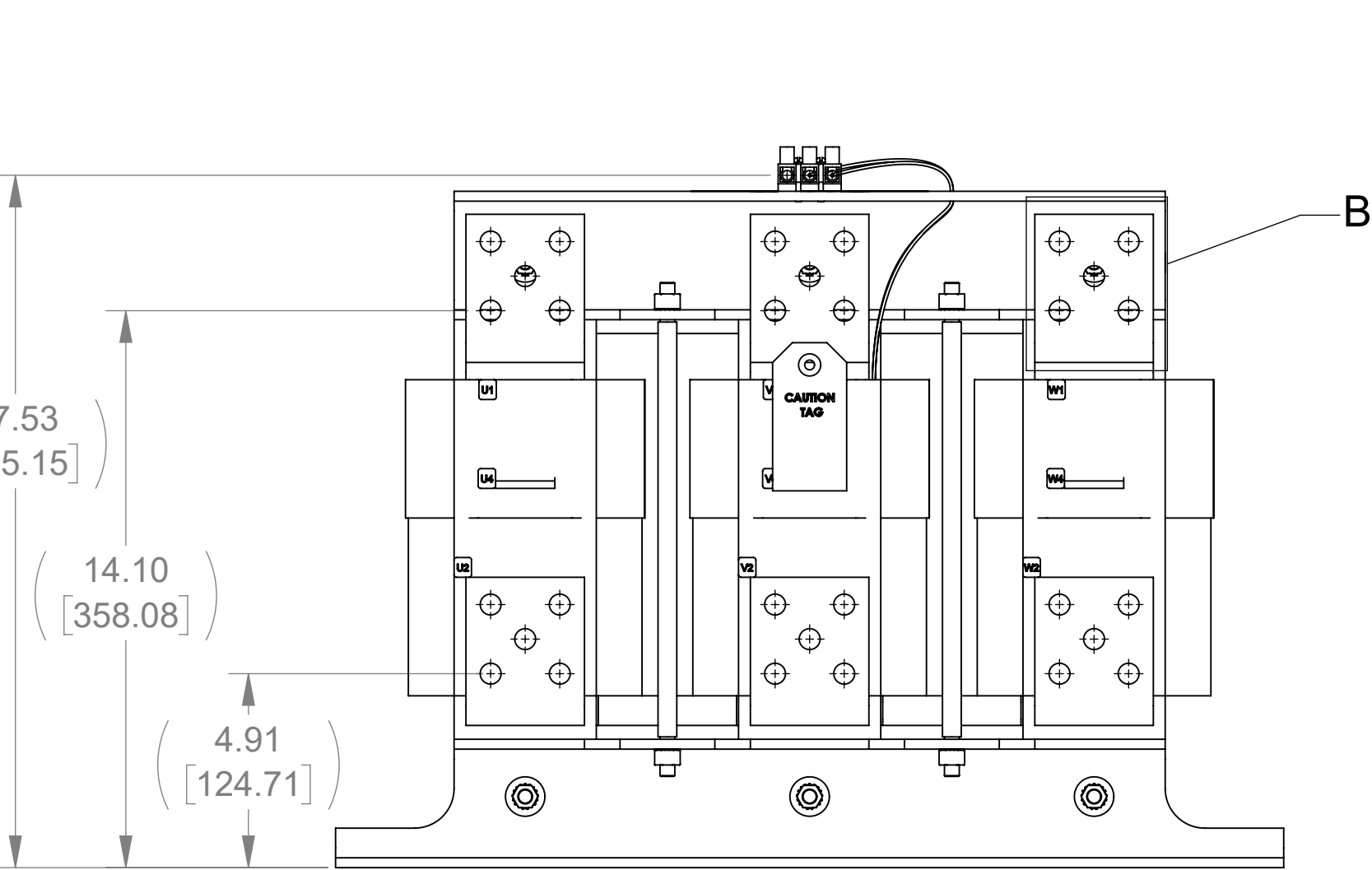
DETAIL B  
(6 PLACES)



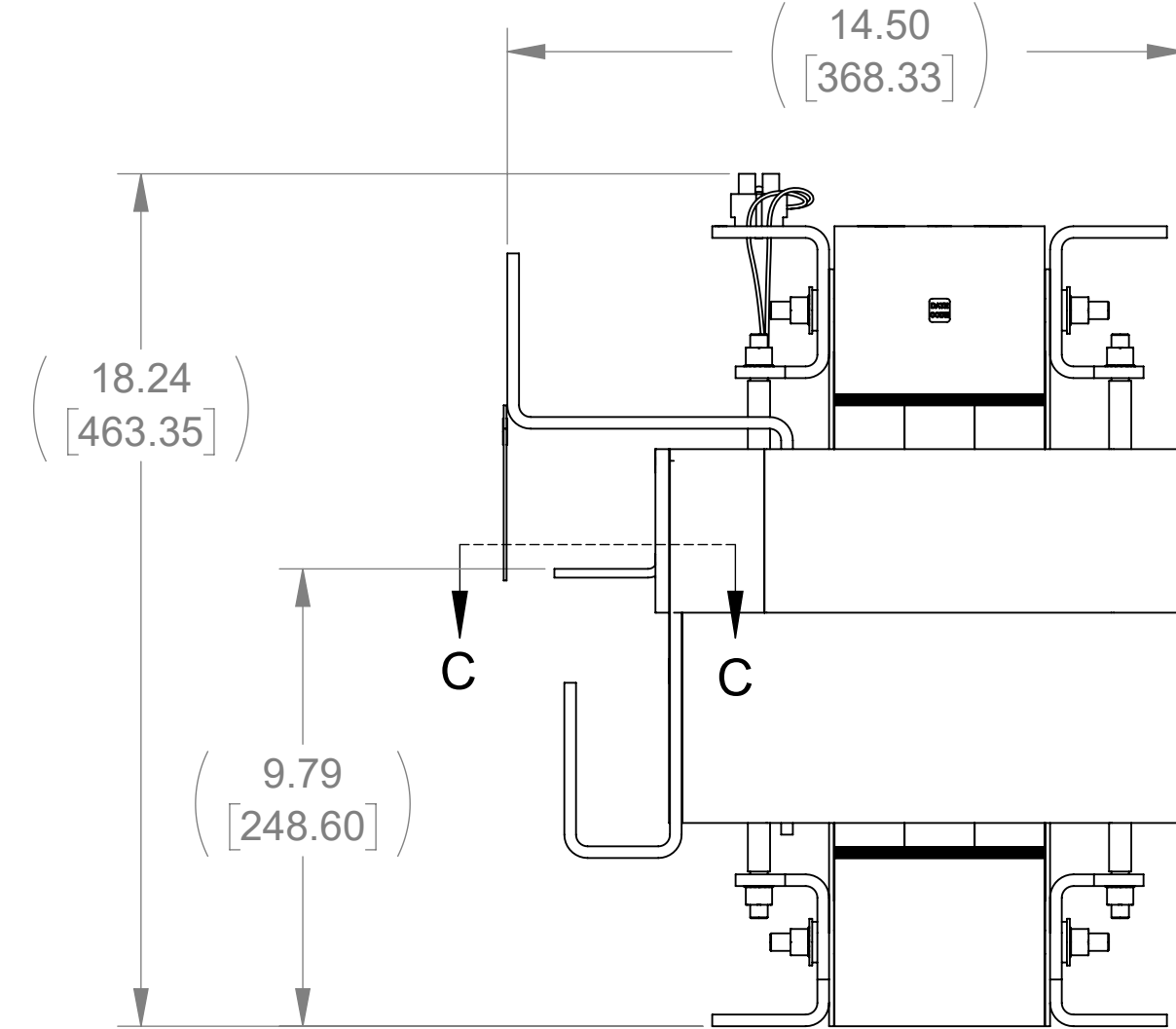
SECTION C-C  
(3 PLACES)



CUSTOMER CONNECTION  
DETAIL VIEW



FRONT VIEW



SIDE VIEW

NOTES:

1. TIGHTEN TERMINAL BLOCK SCREWS TO 16 IN/LBS. TORQUE.
2. TERMINAL WIRE SIZE: 4-14 AWG.
3. FILTER INCLUDES: CAPPANEL-157 (QTY. 1) & CAPPANEL-161 (QTY 1).

THE COMPONENT, PART OR ASSEMBLY DESCRIBED IN THIS DOCUMENT MUST COMPLY WITH THE EU(EUROPEAN UNION) DIRECTIVE RoHS2		MATERIAL		CONFIDENTIAL AND PROPRIETARY INFORMATION THIS DOCUMENT CONTAINS CONFIDENTIAL AND PROPRIETARY INFORMATION OF MTE CORPORATION AND MAY NOT BE USED, COPIED OR DISCLOSED TO OTHERS EXCEPT WITH THE AUTHORIZED WRITTEN PERMISSION OF MTE CORPORATION		
CONTAINS <0.1% OF ANY SVHC BY WEIGHT PER REACH REGULATION				DESCRIPTION		
UNLESS OTHERWISE SPECIFIED DIMENSIONS ARE IN INCHES [MM] TOLERANCES ARE:  ANGLES: ± 1 °  1 PLACE .X: ± .1 [2.5]  2 PLACE .XX: ± .03 [0.76]  3 PLACE .XXX: ± .010 [0.254]		DRAWN MN		DATE 08/27/18		
		CHECKED MN		DATE 09/14/18		
		APPROVED TL		DATE 10/09/18		
				SIZE D		
				DWG No. CD SWGM0515E		
				REV 00		
				SCALE 1:4		
				SHEET 1 OF 1		

