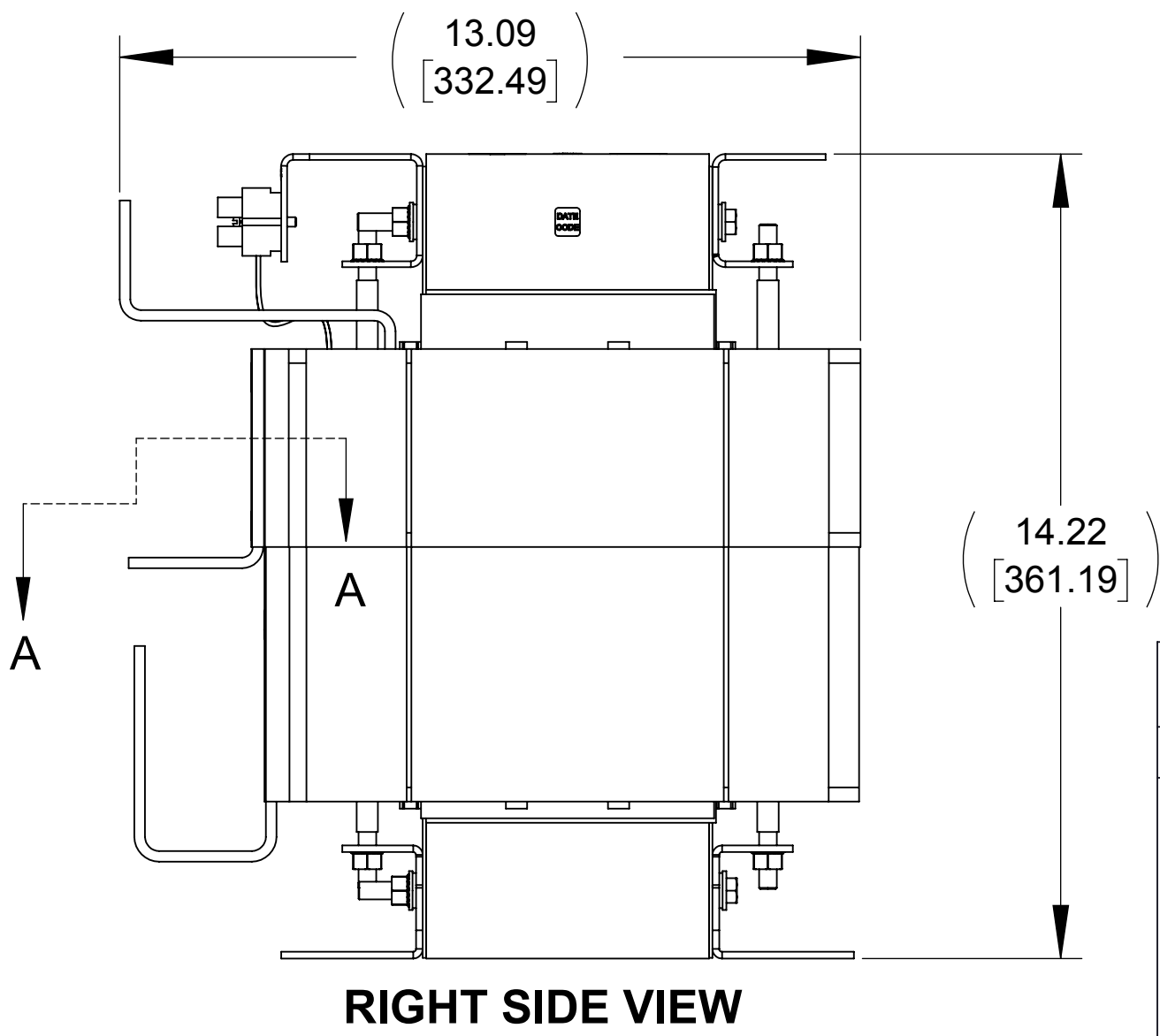
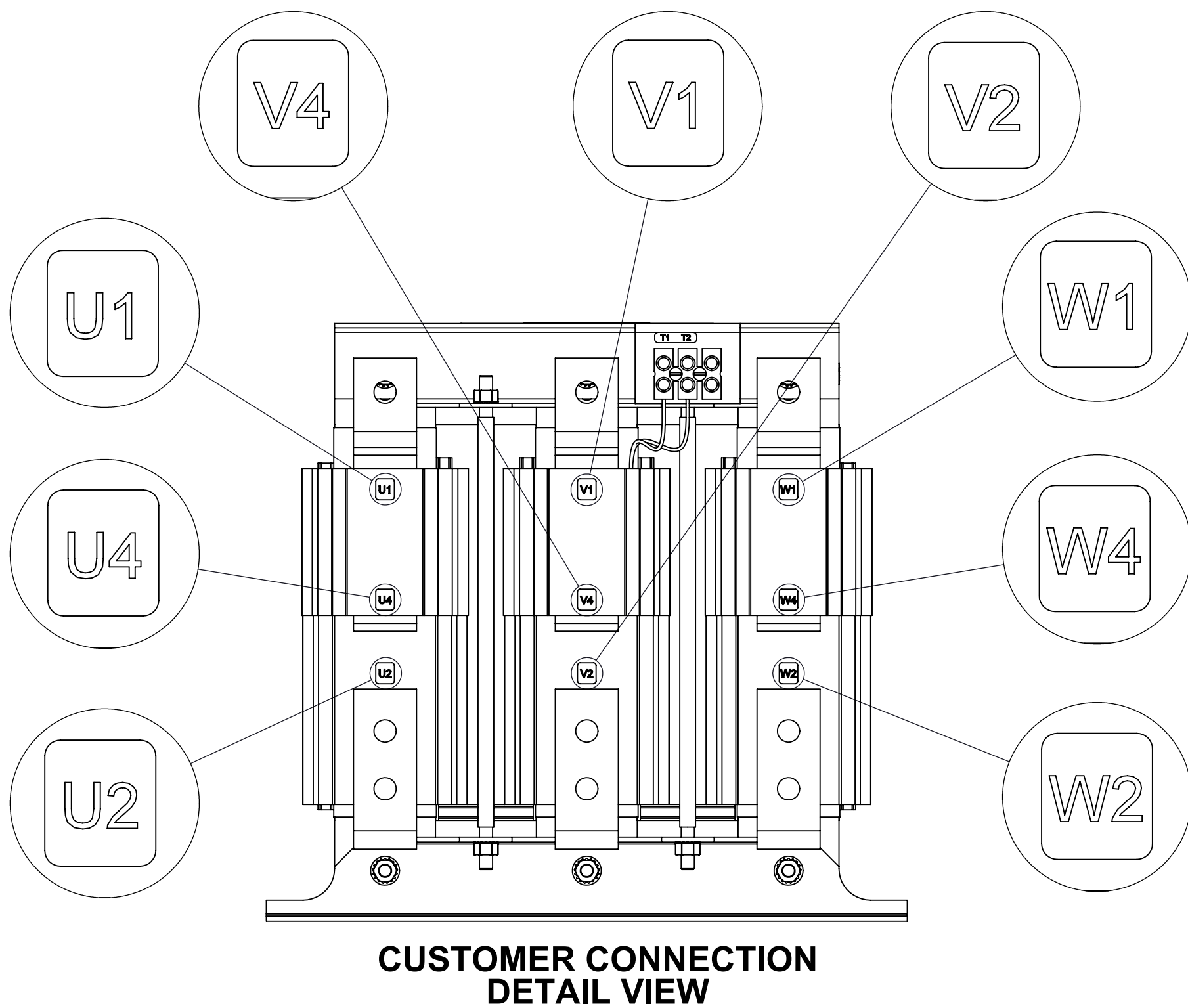
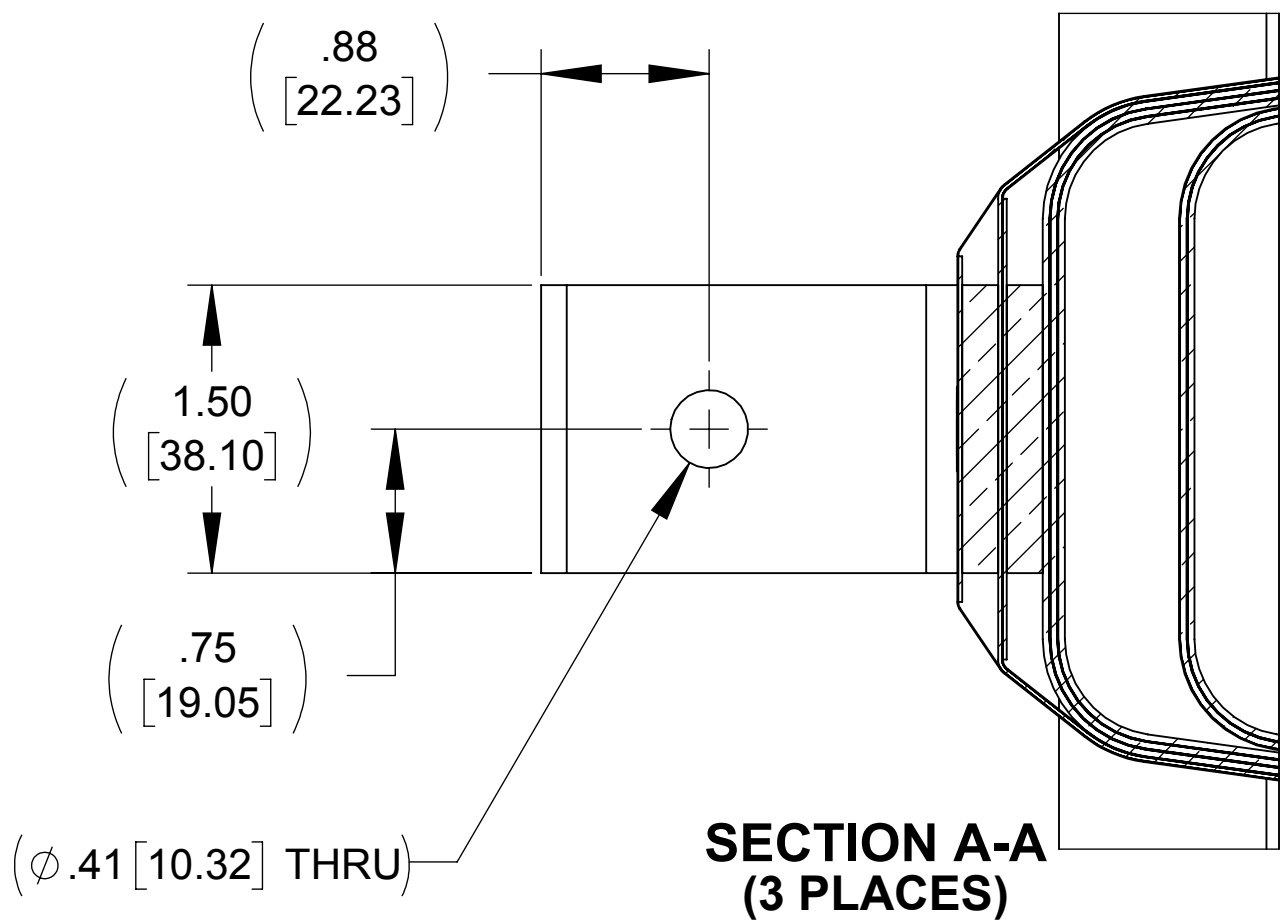
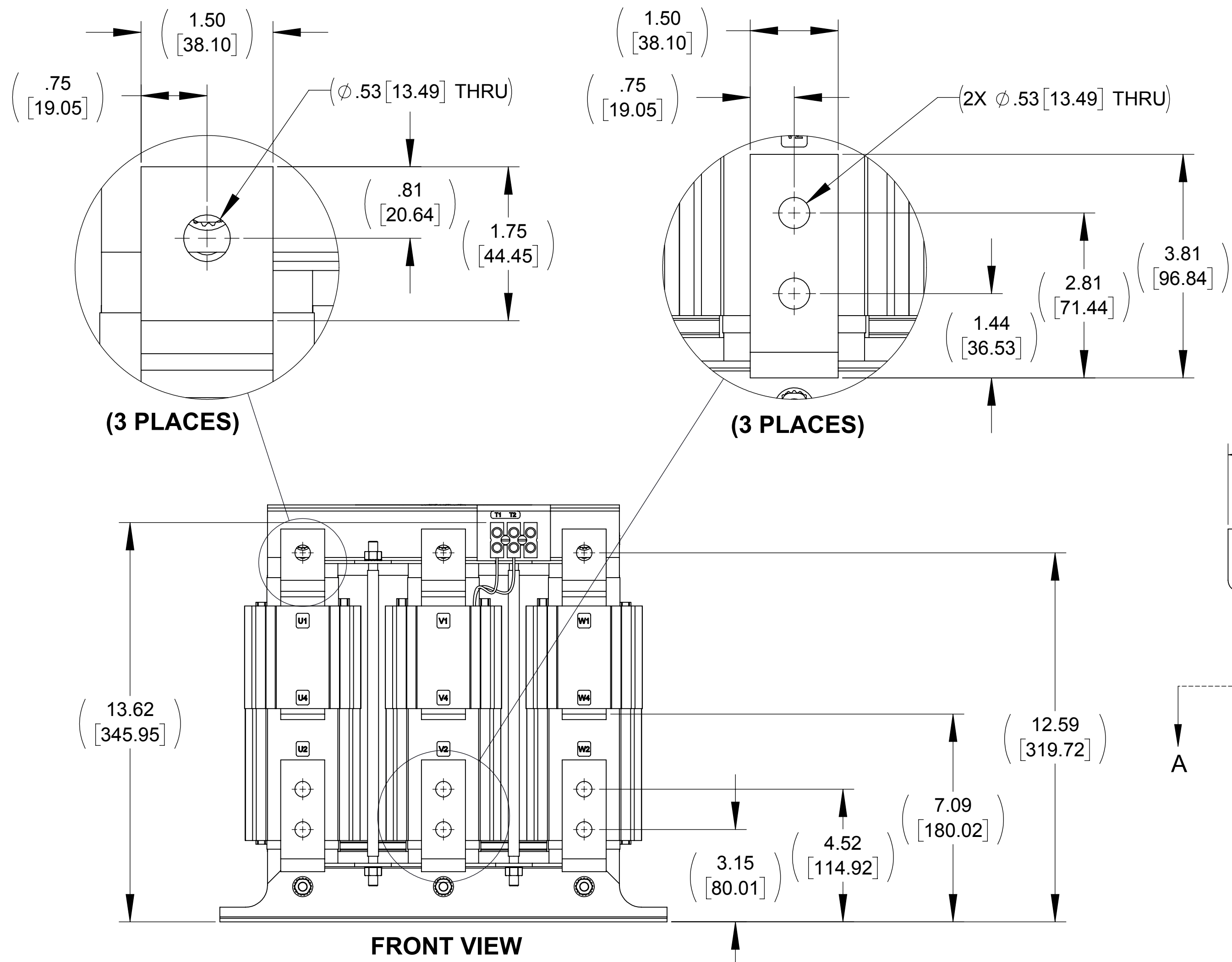
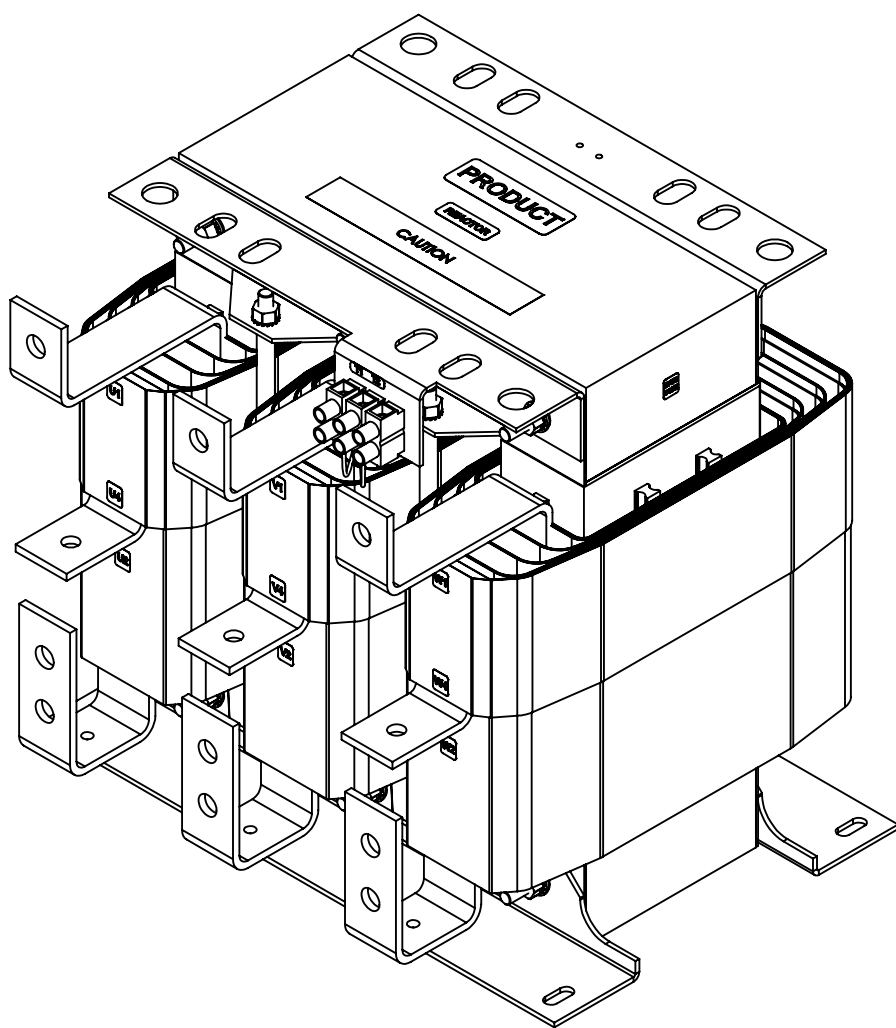
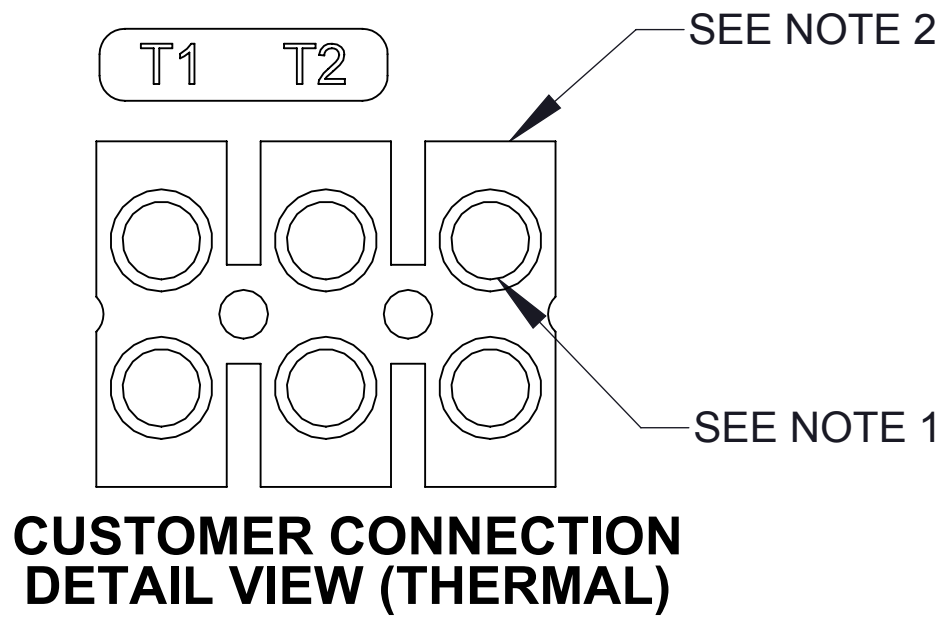
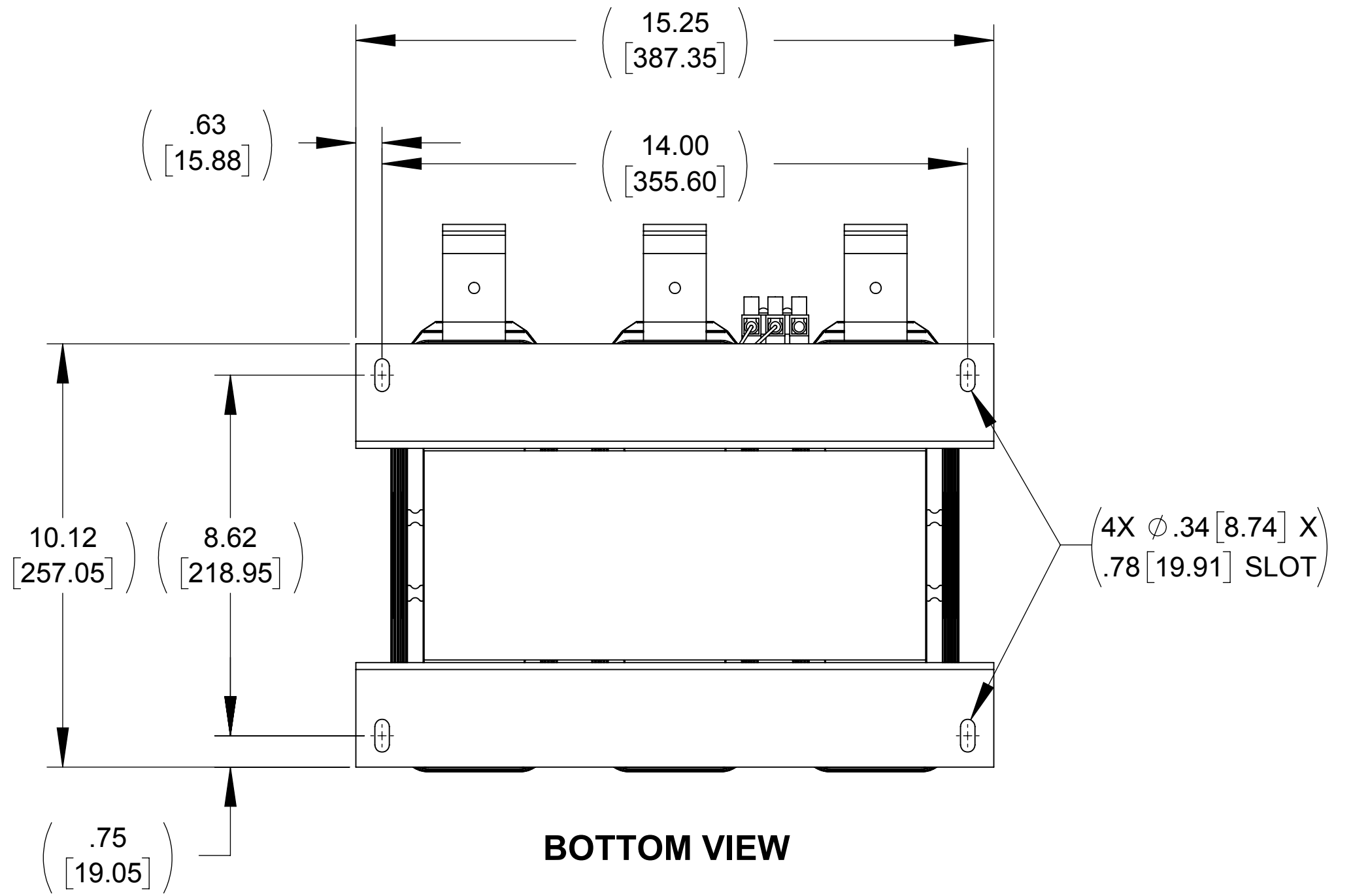
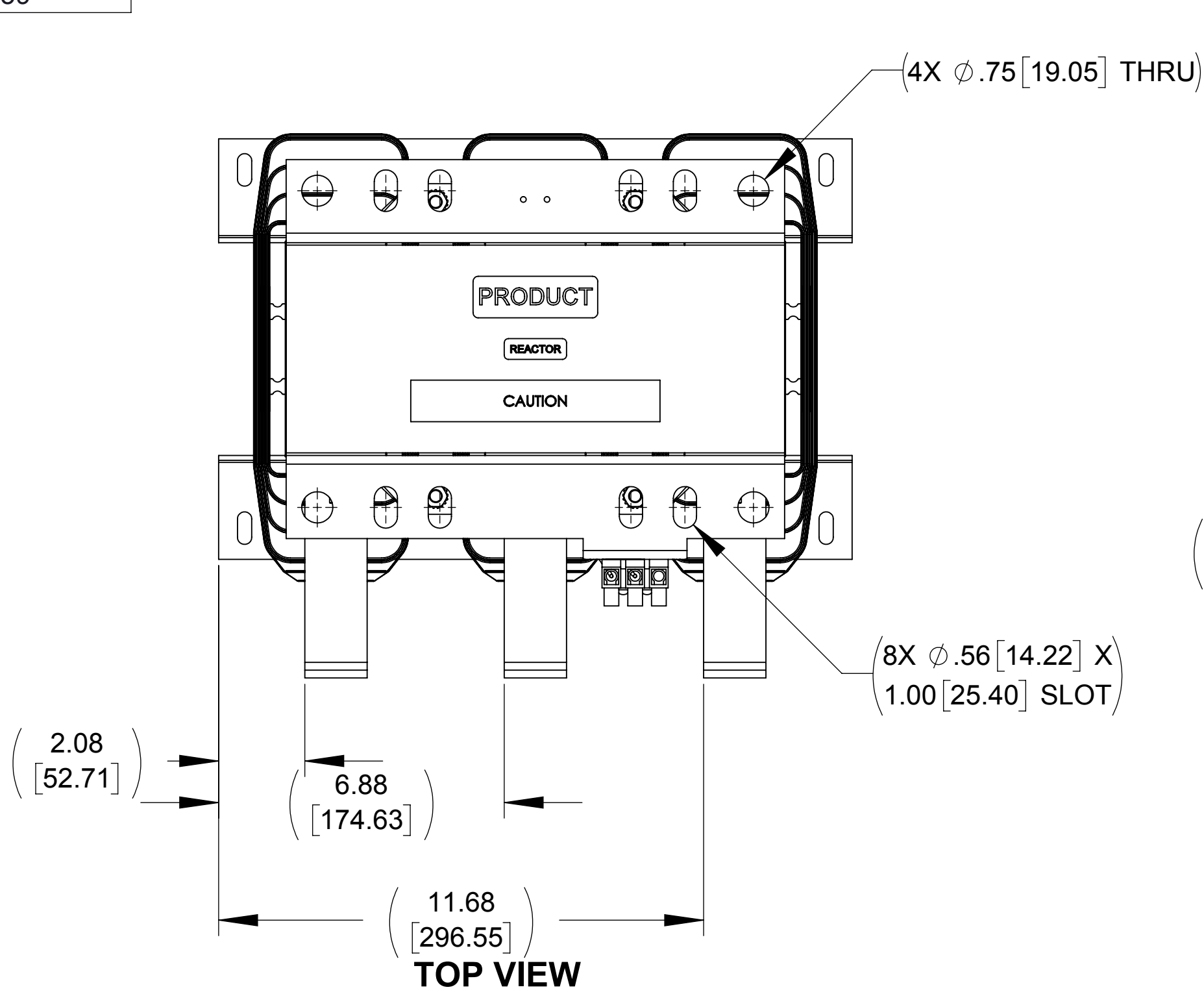



APPROX WEIGHT (LBS)
259

ECO No	DESCRIPTION	REV BY	DATE
M9965	UPDATED DWG TO REFLECT CHANGES FROM ECO M9965	RR	09/26/16



- NOTES:**
1. TIGHTEN TERMINAL BLOCK SCREWS TO 16 IN/LBS. TORQUE.
 2. TERMINAL WIRE SIZE: 4-14 AWG.
 3. FILTER INCLUDES: CAPPANEL-002 (QTY. 1) AND CAPPANEL-003 (QTY. 2)

THE COMPONENT, PART OR ASSEMBLY DESCRIBED IN THIS DOCUMENT MUST COMPLY WITH THE EU(EUROPEAN UNION) DIRECTIVE RoHS2		MATERIAL		CONFIDENTIAL AND PROPRIETARY INFORMATION THIS DOCUMENT CONTAINS CONFIDENTIAL AND PROPRIETARY INFORMATION OF MTE CORPORATION AND MAY NOT BE USED, COPIED OR DISCLOSED TO OTHERS EXCEPT WITH THE AUTHORIZED WRITTEN PERMISSION OF MTE CORPORATION		
CONTAINS <0.1% OF ANY SVHC BY WEIGHT PER REACH REGULATION				DESCRIPTION		
<div>UNLESS OTHERWISE SPECIFIED DIMENSIONS ARE IN INCHES [MM] TOLERANCES ARE:</div> <div>ANGLES: ± 1 °</div> <div>1 PLACE .X: ± .1 [2.5]</div> <div>2 PLACE .XX: ± .03 [0.76]</div> <div>3 PLACE .XXX: ± .010 [0.254]</div>	<div> POWER QUALITY. SOLVED.</div> <div>N83 W13330 Leon Road Menomonee Falls, WI 53051 USA 800.455-4683 262.253.8200</div>	DRAWN	DATE	SWG HF 5kHz 300Hz FILTER 515A 480V, OPEN PANEL		
		MM	01/29/15			
		CHECKED	DATE			
		TS	10/21/16			
		APPROVED	DATE	SIZE	DWG No.	REV
		TS	10/21/16	D CD SWGM0515D-HF05300		01
		SCALE 1:3		SHEET 1 OF 1		