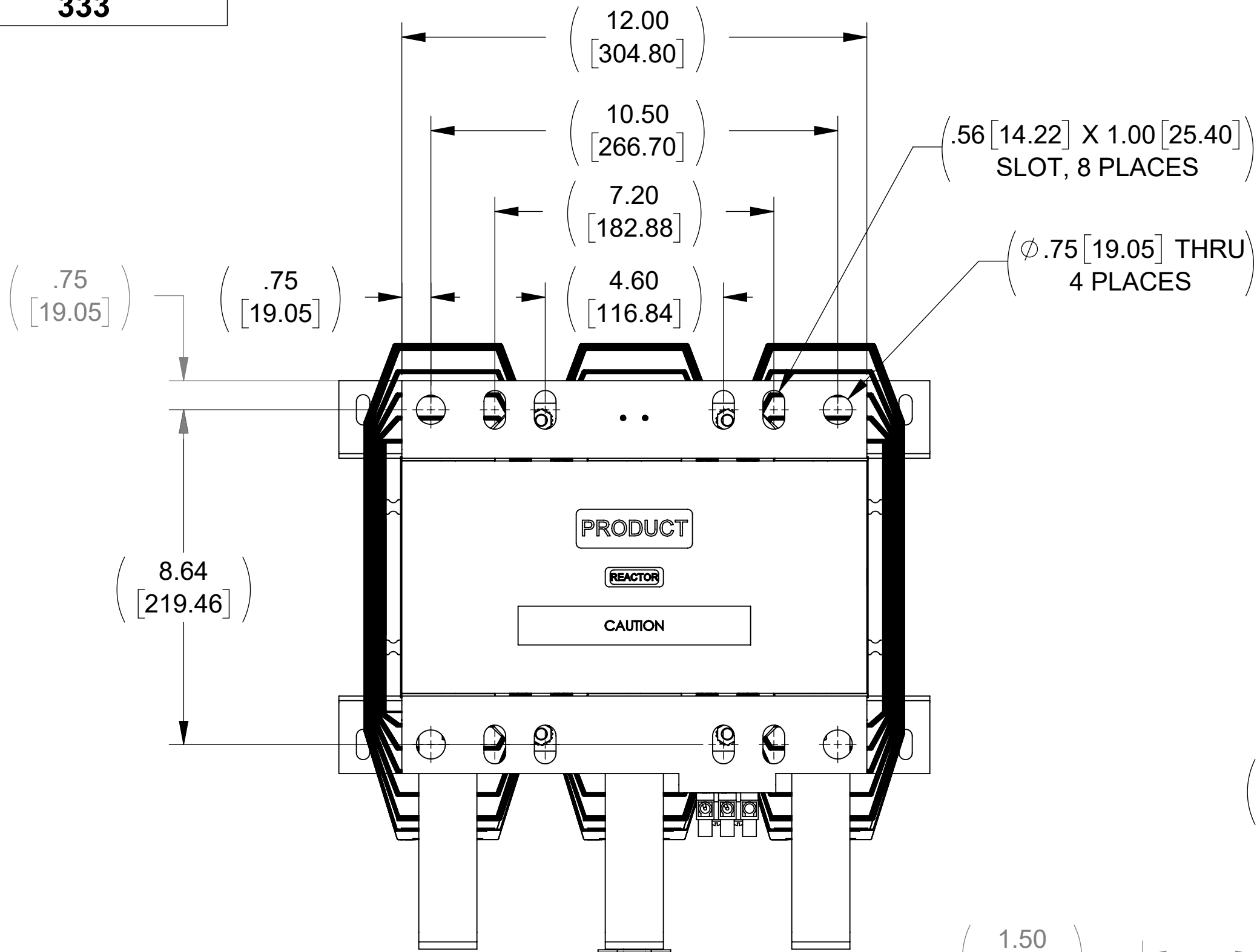
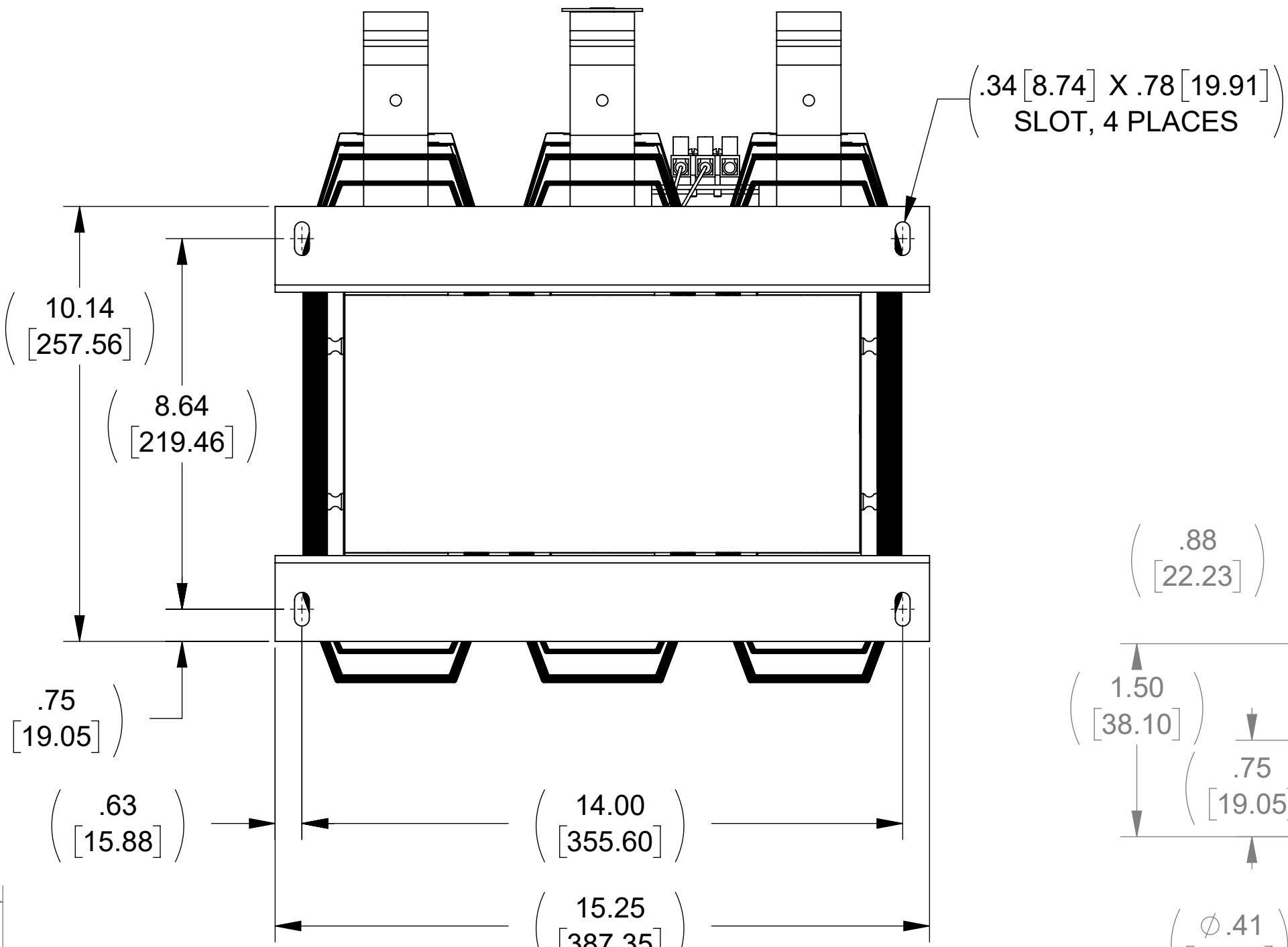


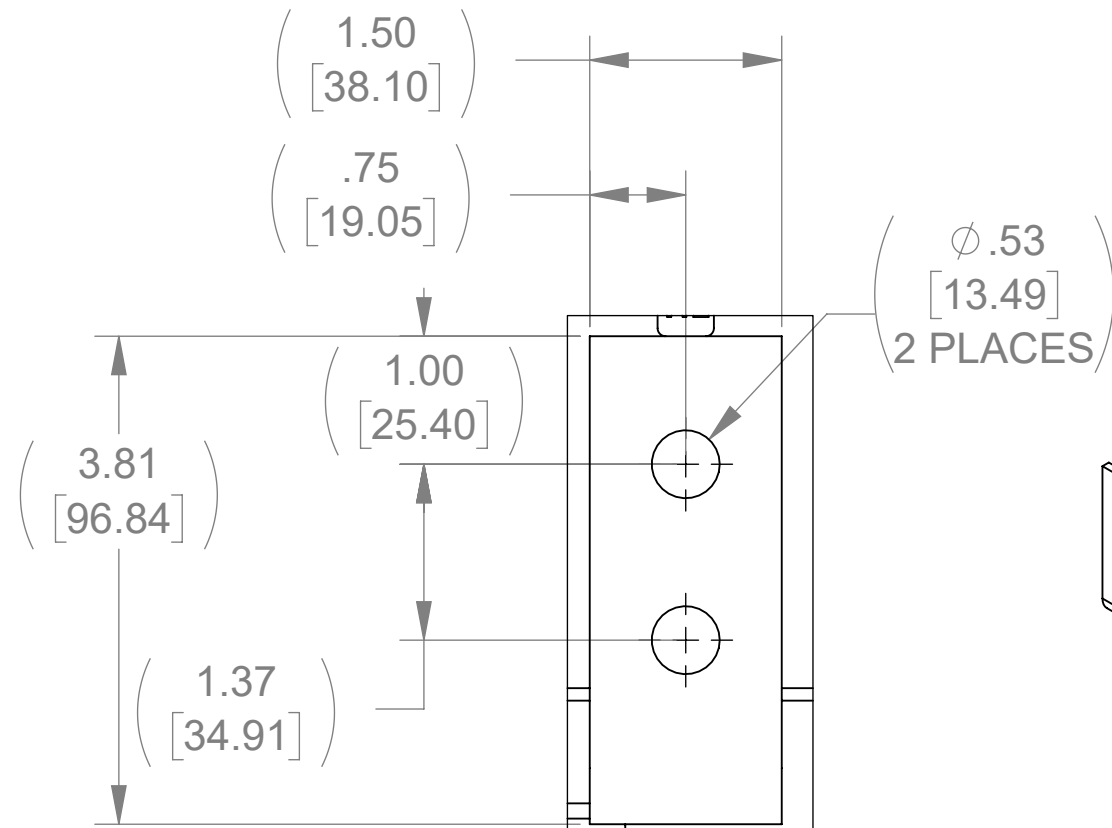
APPROX. WEIGHT
(LBS)
333



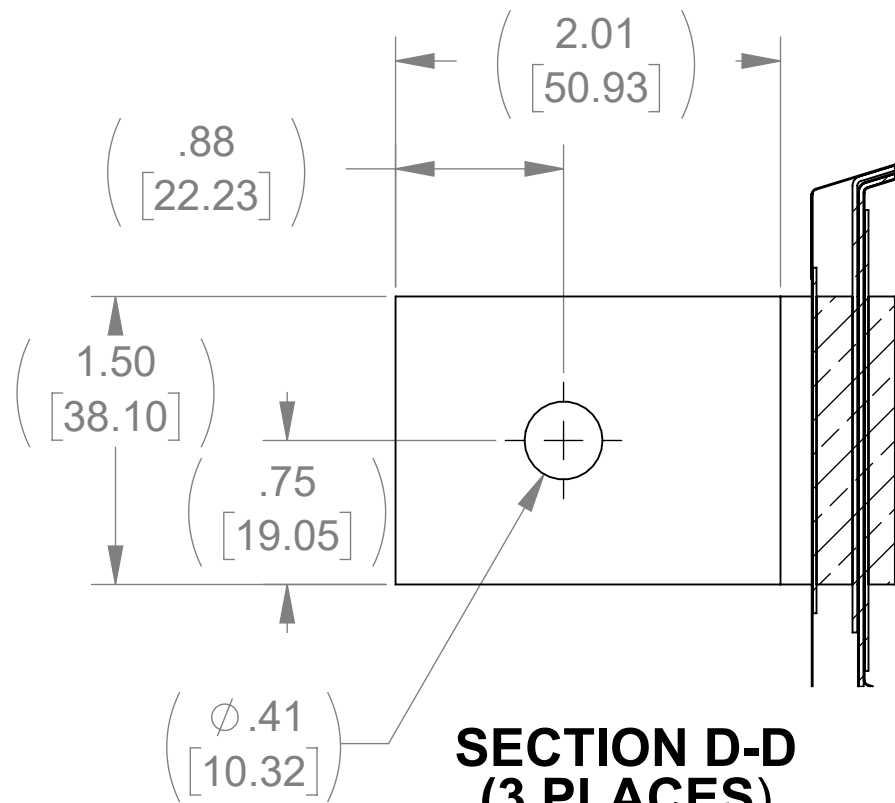
TOP VIEW



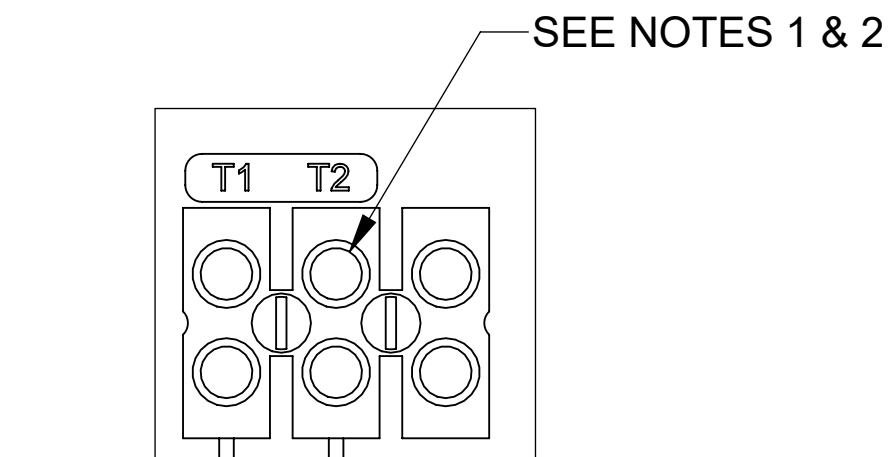
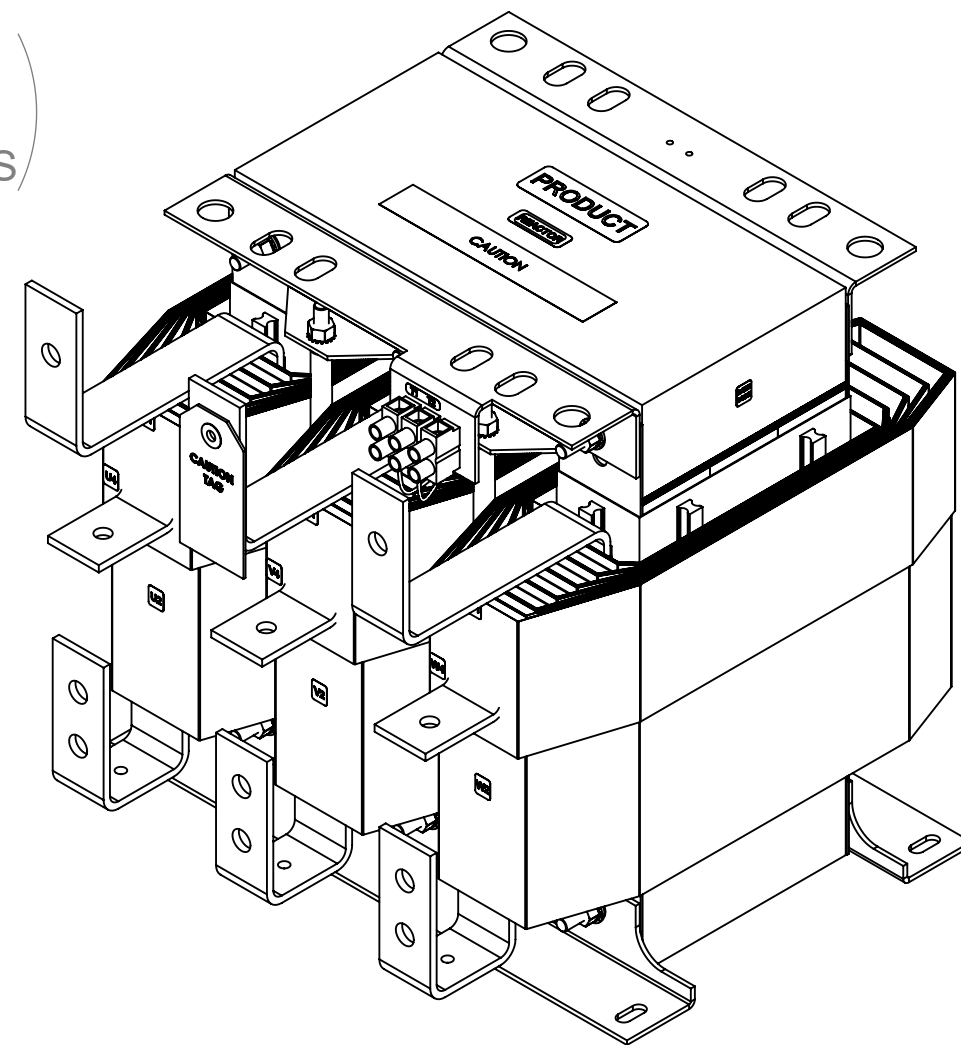
BOTTOM VIEW



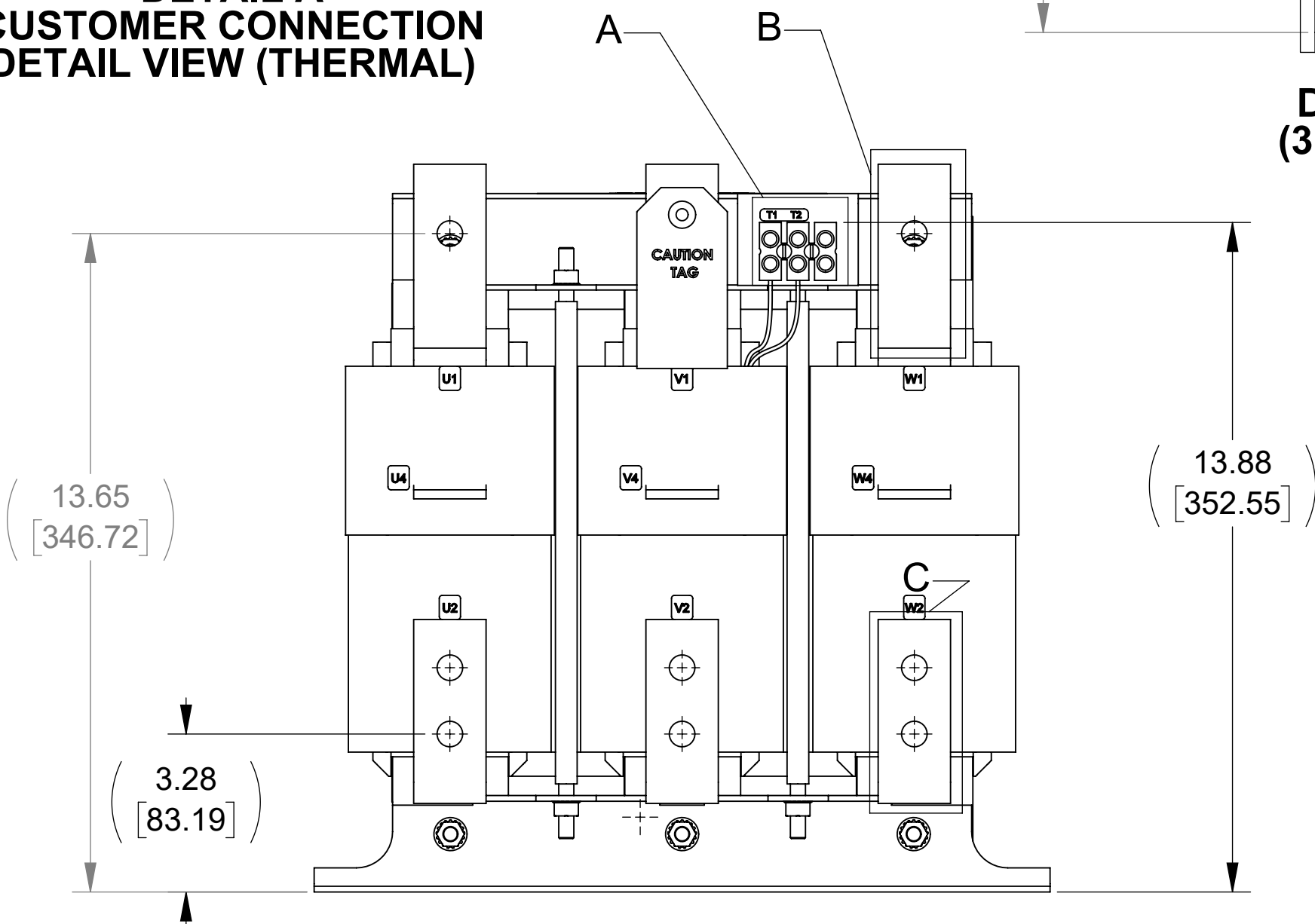
DETAIL C
(3 PLACES)



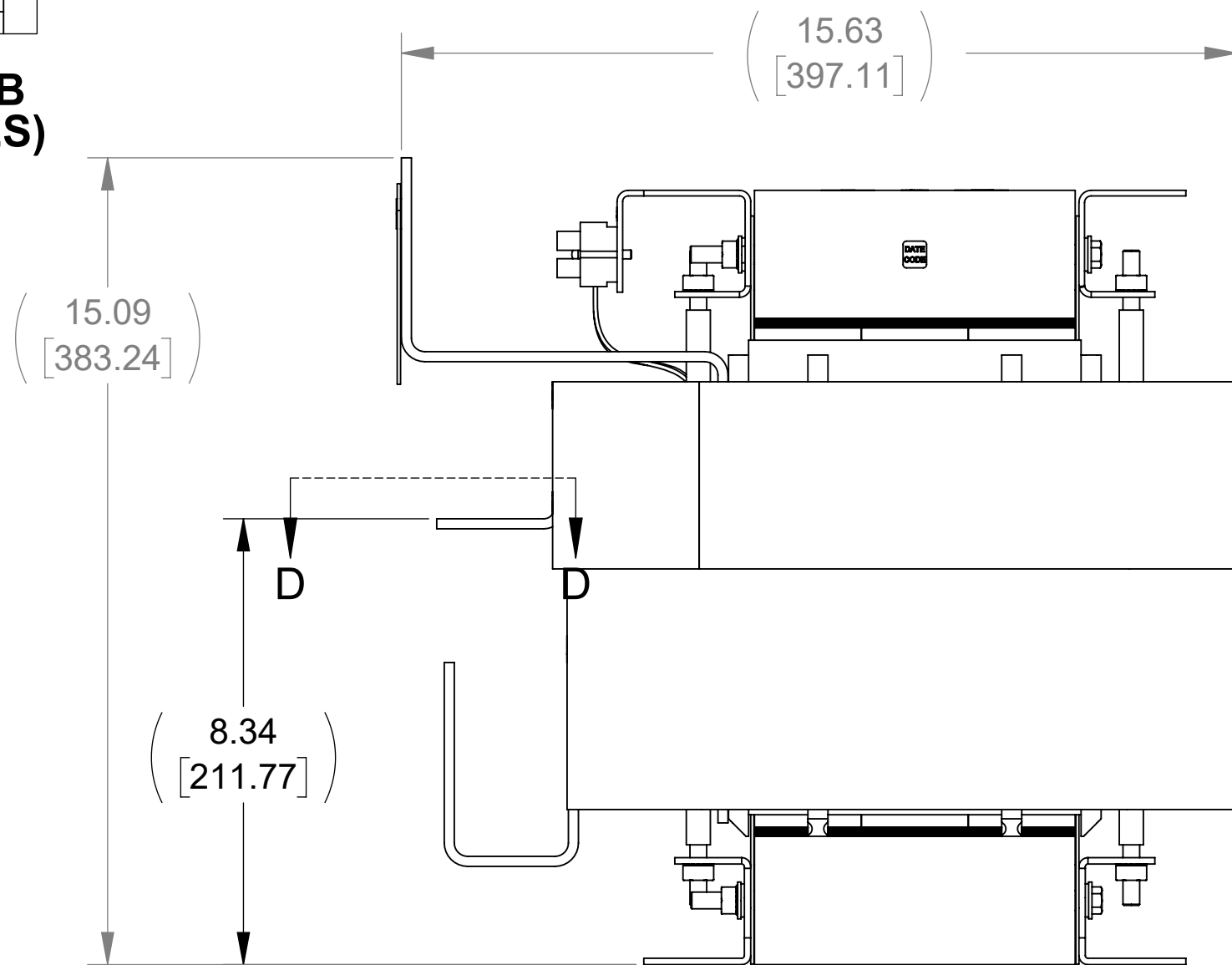
SECTION D-D
(3 PLACES)



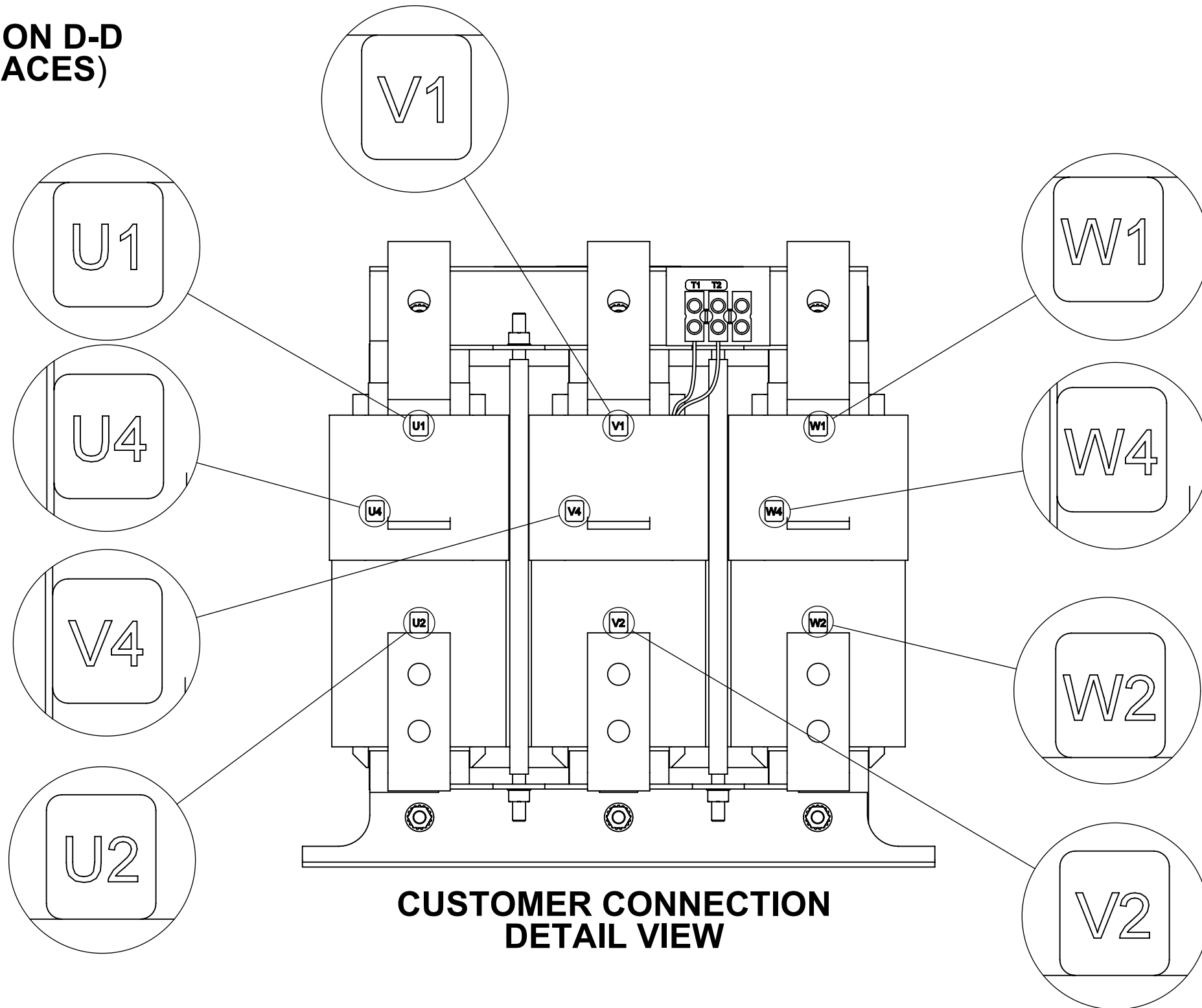
DETAIL A
CUSTOMER CONNECTION
DETAIL VIEW (THERMAL)



FRONT VIEW



SIDE VIEW



CUSTOMER CONNECTION
DETAIL VIEW

NOTES:

1. TIGHTEN TERMINAL BLOCK SCREWS TO 16 IN/LBS. TORQUE.
2. TERMINAL WIRE SIZE: 4-14 AWG.
3. FILTER INCLUDES: CAPPANEL-161 (QTY. 1) & CAPPANEL-162 (QTY 1).

THE COMPONENT, PART OR ASSEMBLY DESCRIBED IN THIS DOCUMENT MUST COMPLY WITH THE EU(EUROPEAN UNION) DIRECTIVE RoHS2		MATERIAL		CONFIDENTIAL AND PROPRIETARY INFORMATION THIS DOCUMENT CONTAINS CONFIDENTIAL AND PROPRIETARY INFORMATION OF MTE CORPORATION AND MAY NOT BE USED, COPIED OR DISCLOSED TO OTHERS EXCEPT WITH THE AUTHORIZED WRITTEN PERMISSION OF MTE CORPORATION	
CONTAINS <0.1% OF ANY SVHC BY WEIGHT PER REACH REGULATION				DESCRIPTION	
UNLESS OTHERWISE SPECIFIED DIMENSIONS ARE IN INCHES [MM] TOLERANCES ARE: ANGLES: ± 1 ° 1 PLACE .X: ± .1 [2.5] 2 PLACE .XX: ± .03 [0.76] 3 PLACE .XXX: ± .010 [0.254]		DRAWN MN 08/21/18		DATE 08/21/18	
		CHECKED MN 09/14/18		DATE 09/14/18	
		APPROVED TL 10/09/18		DATE 10/09/18	
		SIZE D		DWG No. CD SWGM0305E	
		SCALE 1:3		REV 00	
				SHEET 1 OF 1	



N83 W13330 Leon Road
Menomonee Falls, WI 53051 USA
800.455.4683
262.253.8200