

APPROX WEIGHT (LBS)
174

ECO No	DESCRIPTION	REV BY	DATE
M11976	CORRECTED DISSOCIATED DIMENSIONS	WF	09/18/19

D

C

B

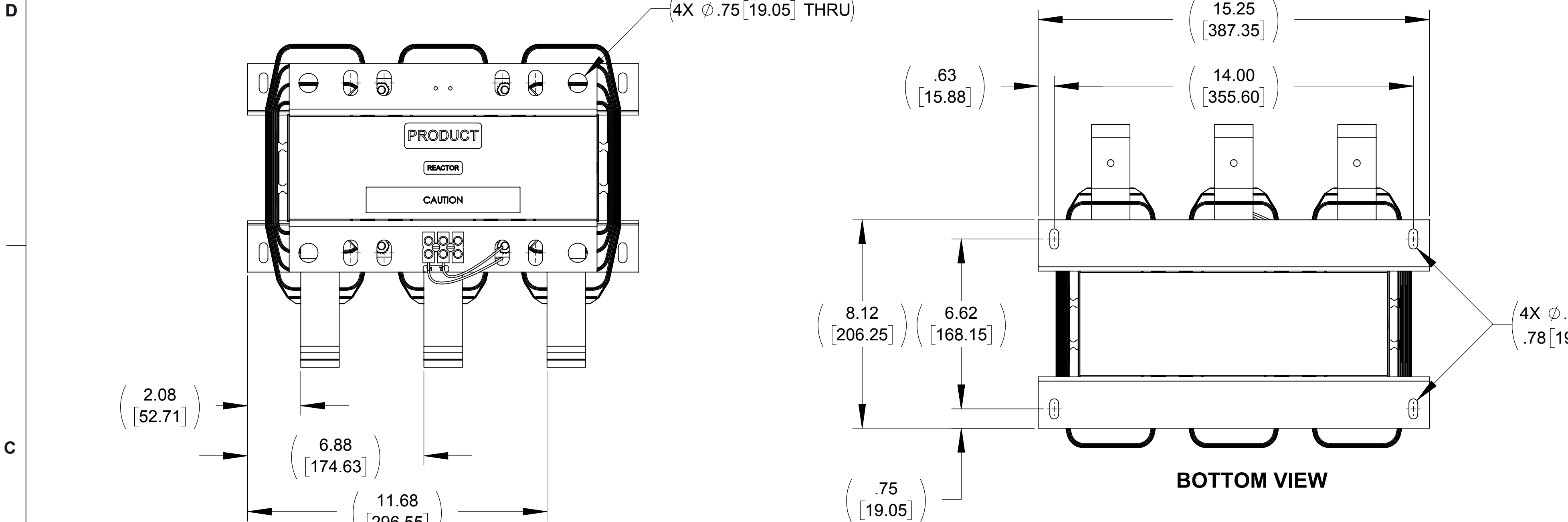
A

D

C

B

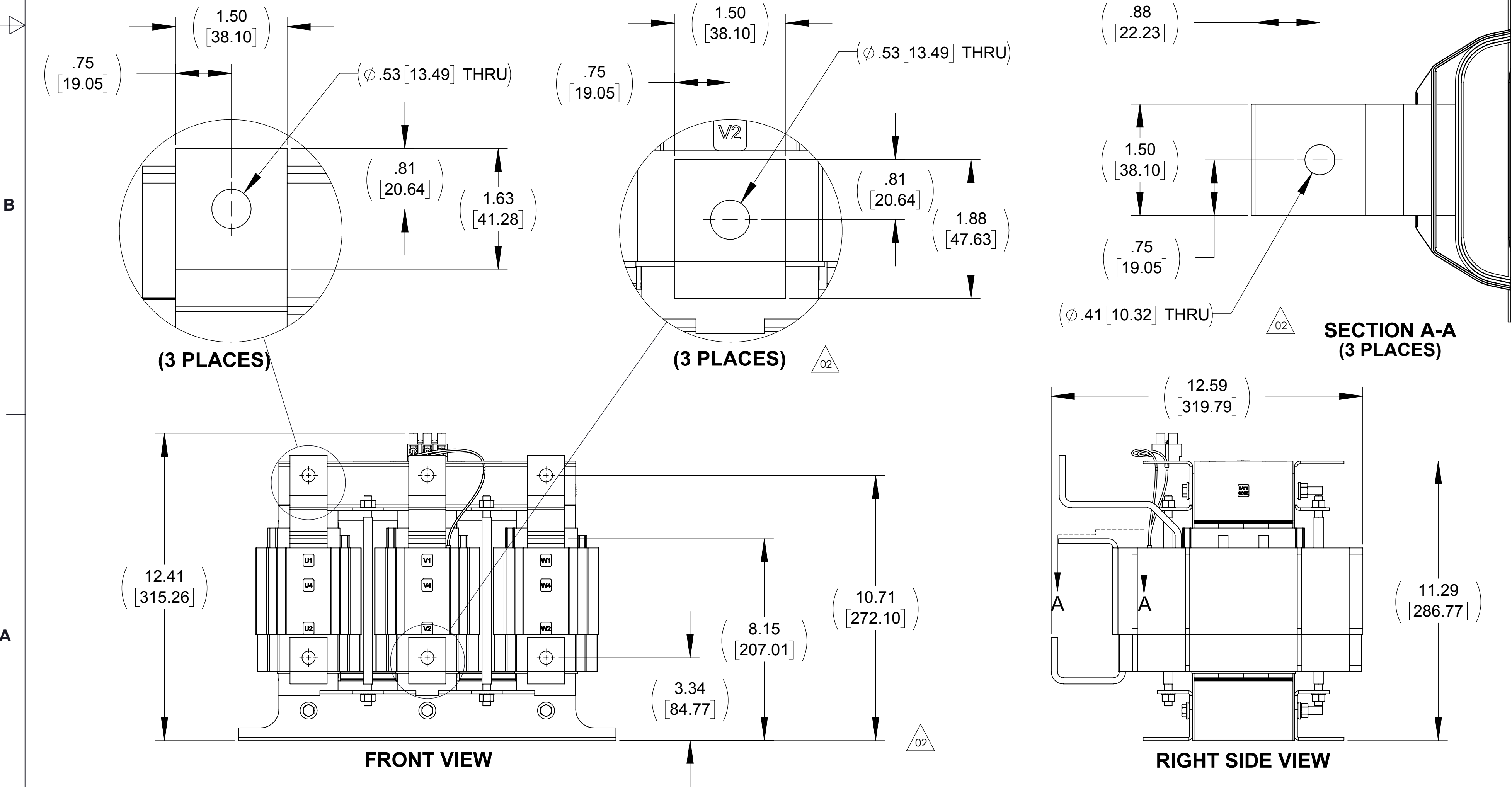
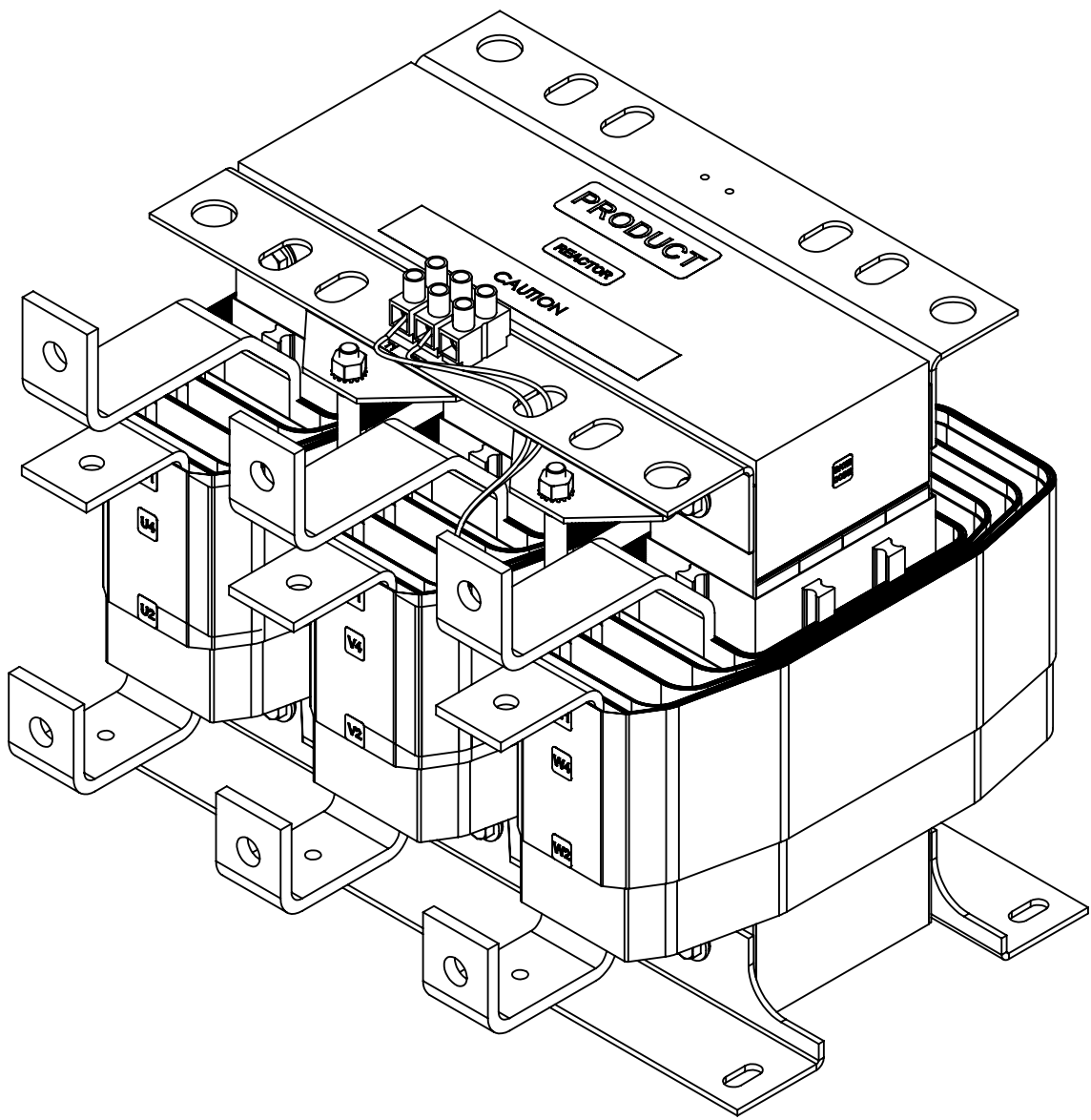
A



TOP VIEW

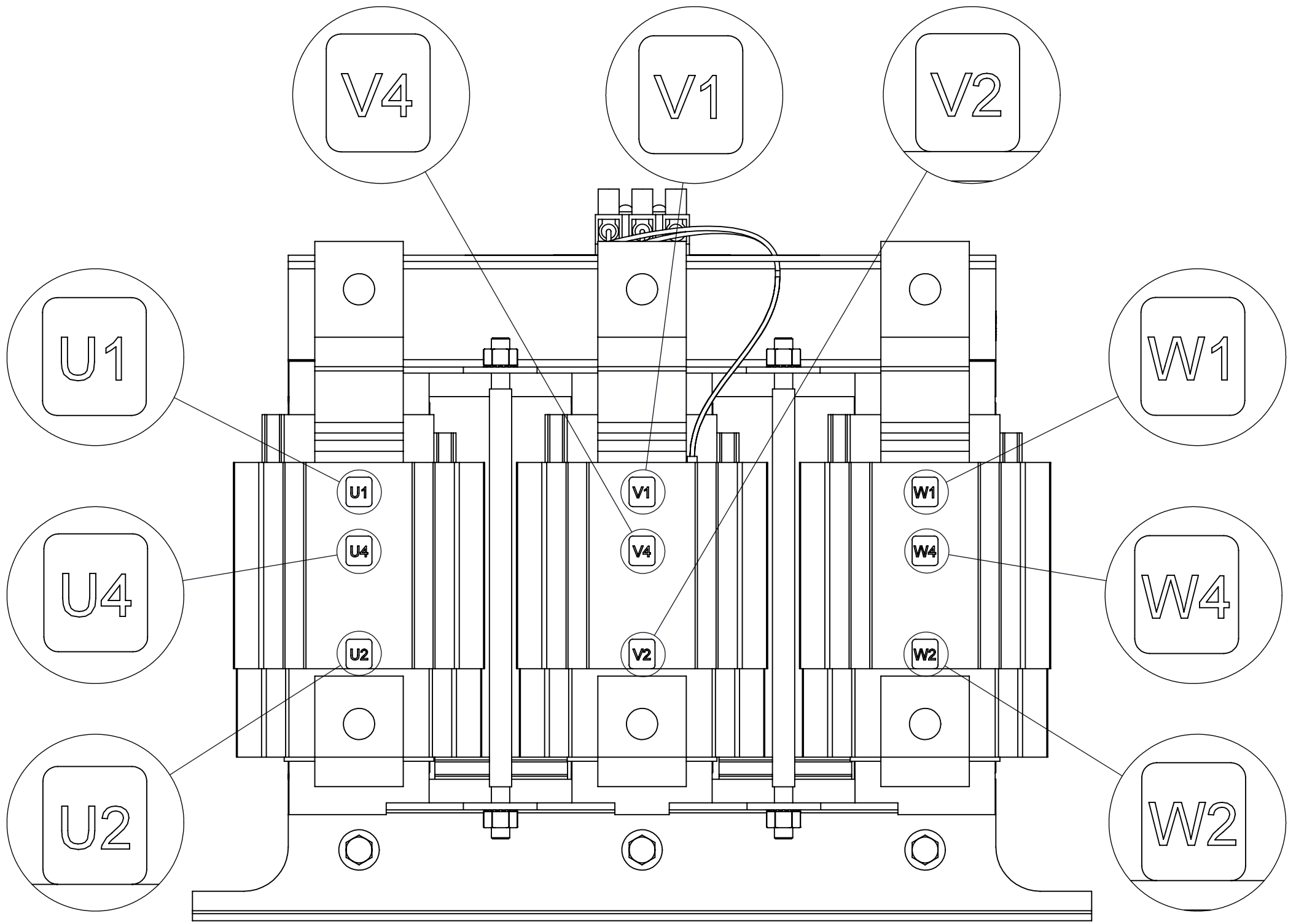
BOTTOM VIEW

CUSTOMER CONNECTION
DETAIL VIEW
(THERMAL)



FRONT VIEW

RIGHT SIDE VIEW



CUSTOMER CONNECTION
DETAIL VIEW

- NOTES:
1. TIGHTEN TERMINAL BLOCK SCREWS TO 16 IN/LBS. TORQUE.
 2. TERMINAL WIRE SIZE: 4-14 AWG.
 3. FILTER INCLUDES: CAPPANEL-002 (QTY. 1).

THE COMPONENT, PART OR ASSEMBLY DESCRIBED IN THIS DOCUMENT MUST COMPLY WITH THE EU(EUROPEAN UNION) DIRECTIVE RoHS2			MATERIAL		CONFIDENTIAL AND PROPRIETARY INFORMATION THIS DOCUMENT CONTAINS CONFIDENTIAL AND PROPRIETARY INFORMATION OF MTE CORPORATION AND MAY NOT BE USED, COPIED OR DISCLOSED TO OTHERS EXCEPT WITH THE AUTHORIZED WRITTEN PERMISSION OF MTE CORPORATION		
CONTAINS <0.1% OF ANY SVHC BY WEIGHT PER REACH REGULATION					DESCRIPTION		
UNLESS OTHERWISE SPECIFIED DIMENSIONS ARE IN INCHES [MM] TOLERANCES ARE: ANGLES: ± 1 ° 1 PLACE .X: ± .1 [2.5] 2 PLACE .XX: ± .03 [0.76] 3 PLACE .XXX: ± .010 [0.254]			DRAWN MM		DATE 01/30/15		
			CHECKED WF		DATE 09/18/19		
			APPROVED AK		DATE 09/19/19		
					SIZE D CD SWGM0305D-HF05300		
					REV 02		
					SCALE 1:3		
					SHEET 1 OF 1		