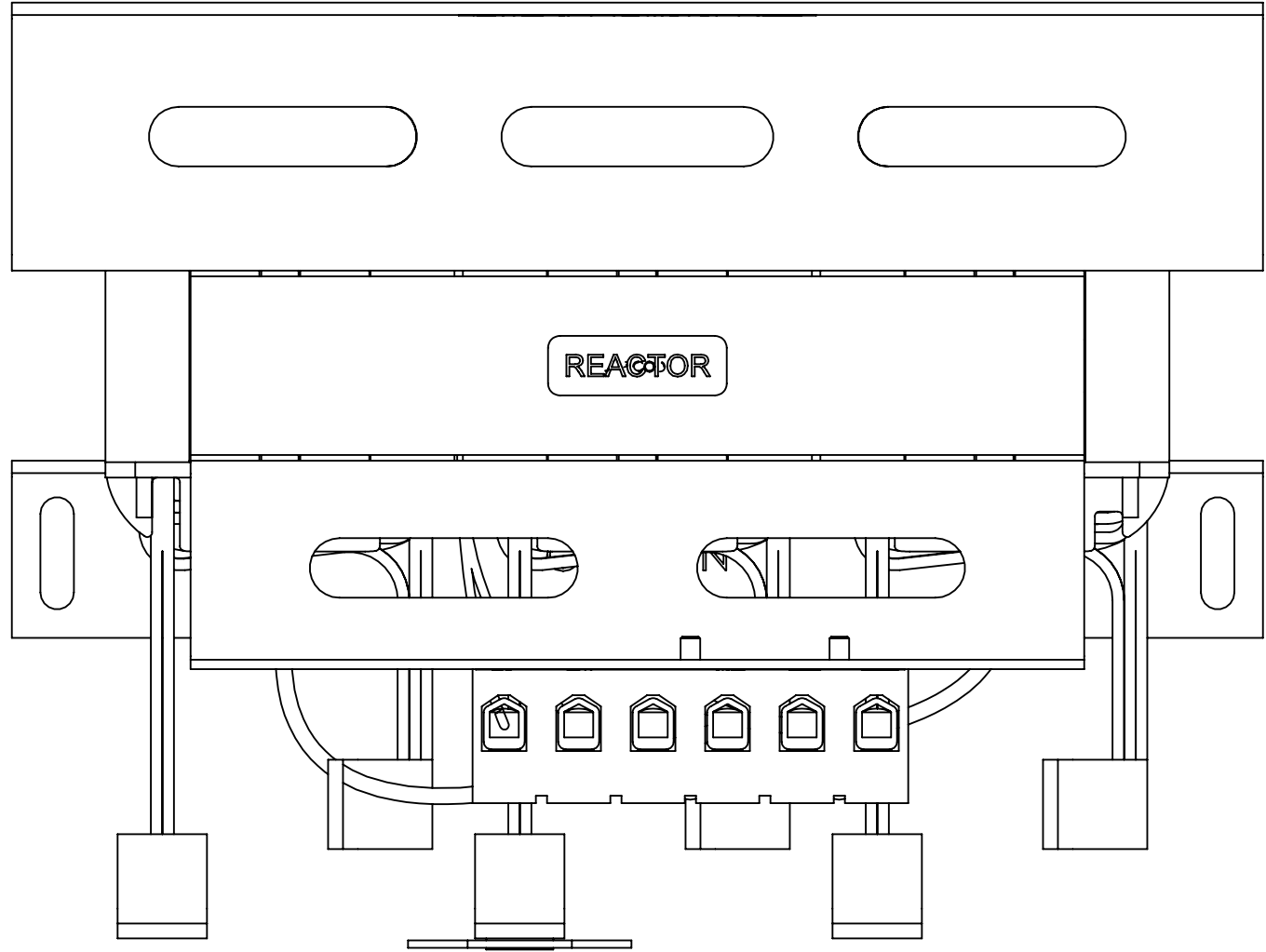
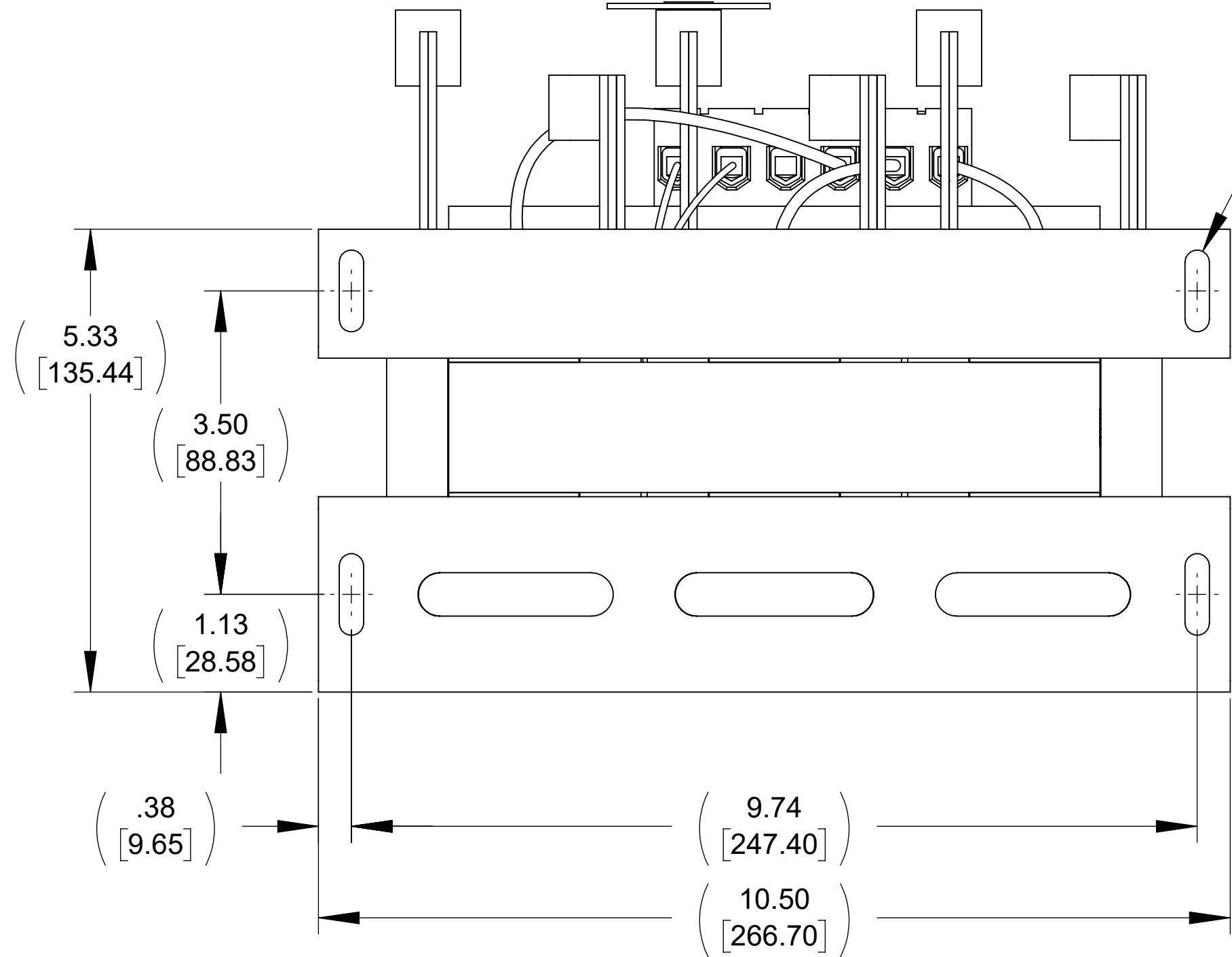


APPROX. WEIGHT  
(LBS)  
34



TOP VIEW

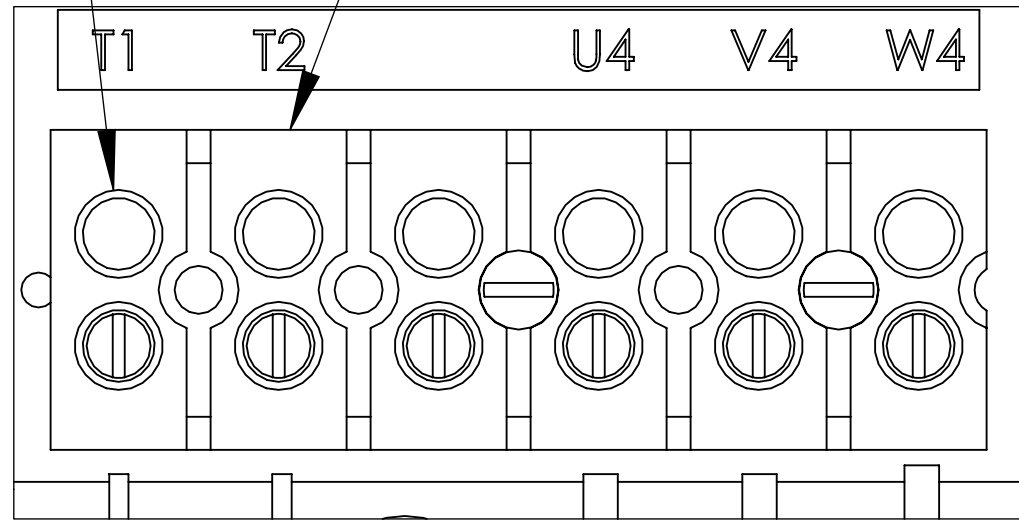


BOTTOM VIEW

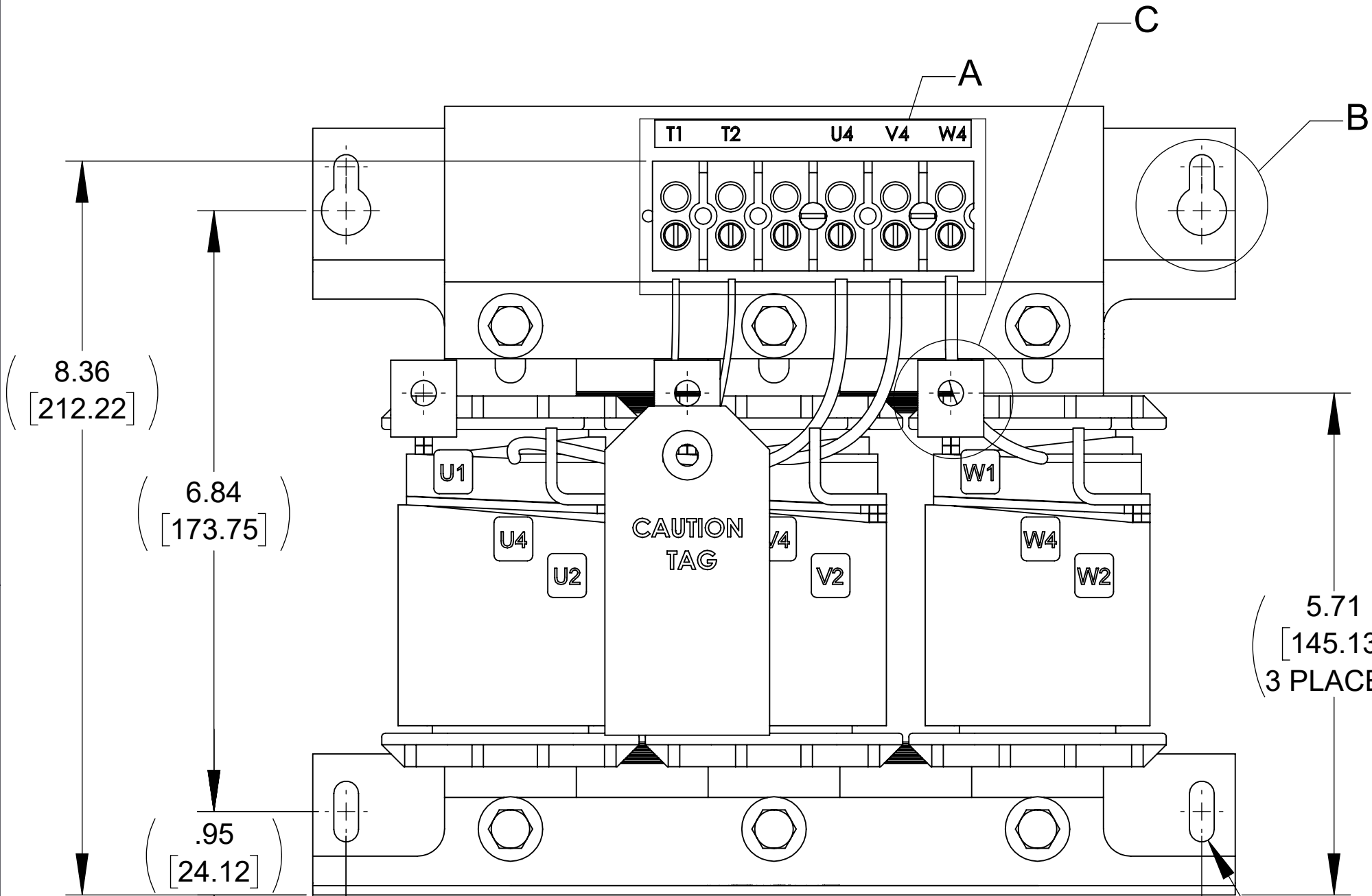
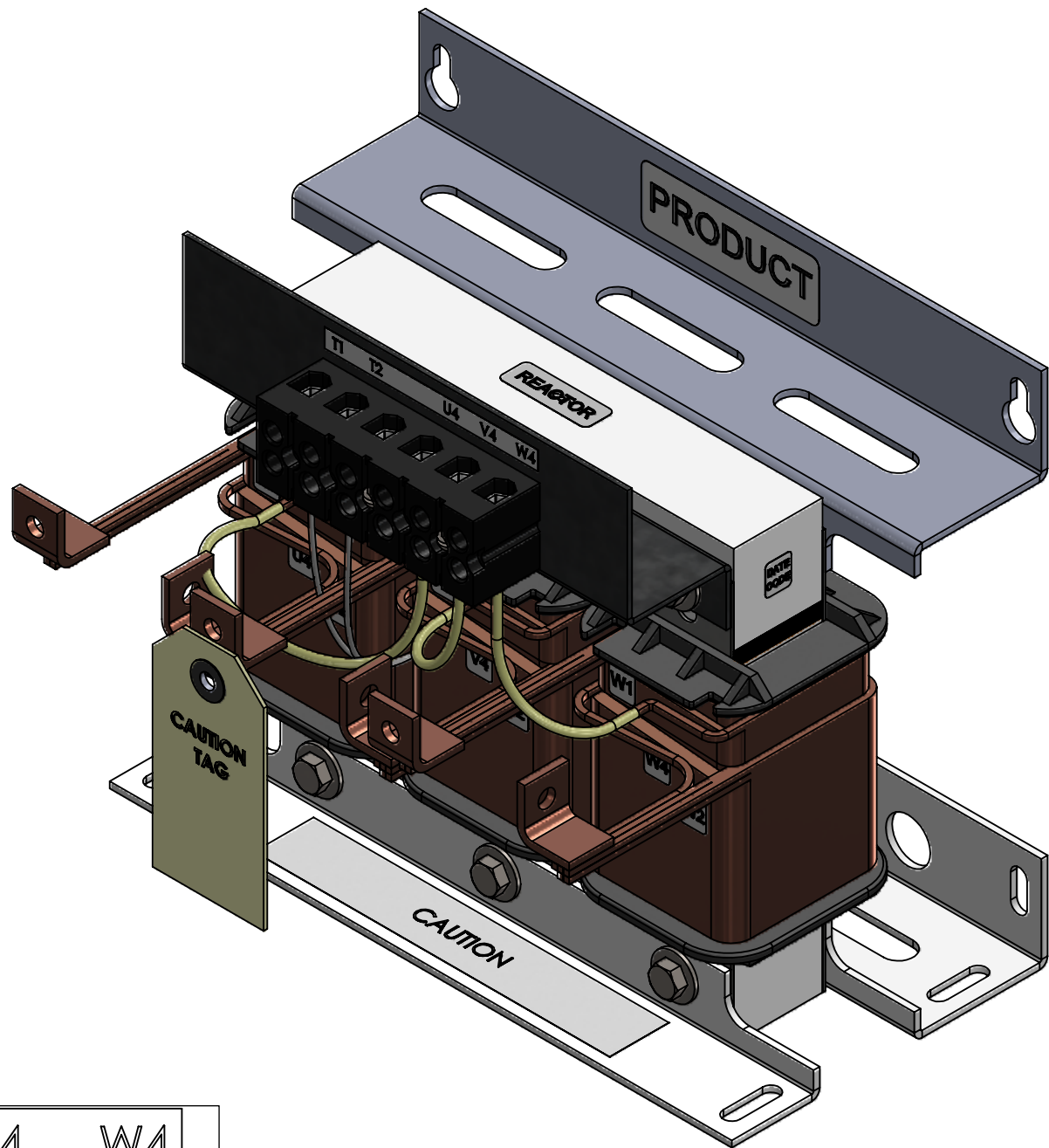
(.28 [7.11] X .94 [23.88])  
SLOT, 4 PLACES

SEE NOTE 1

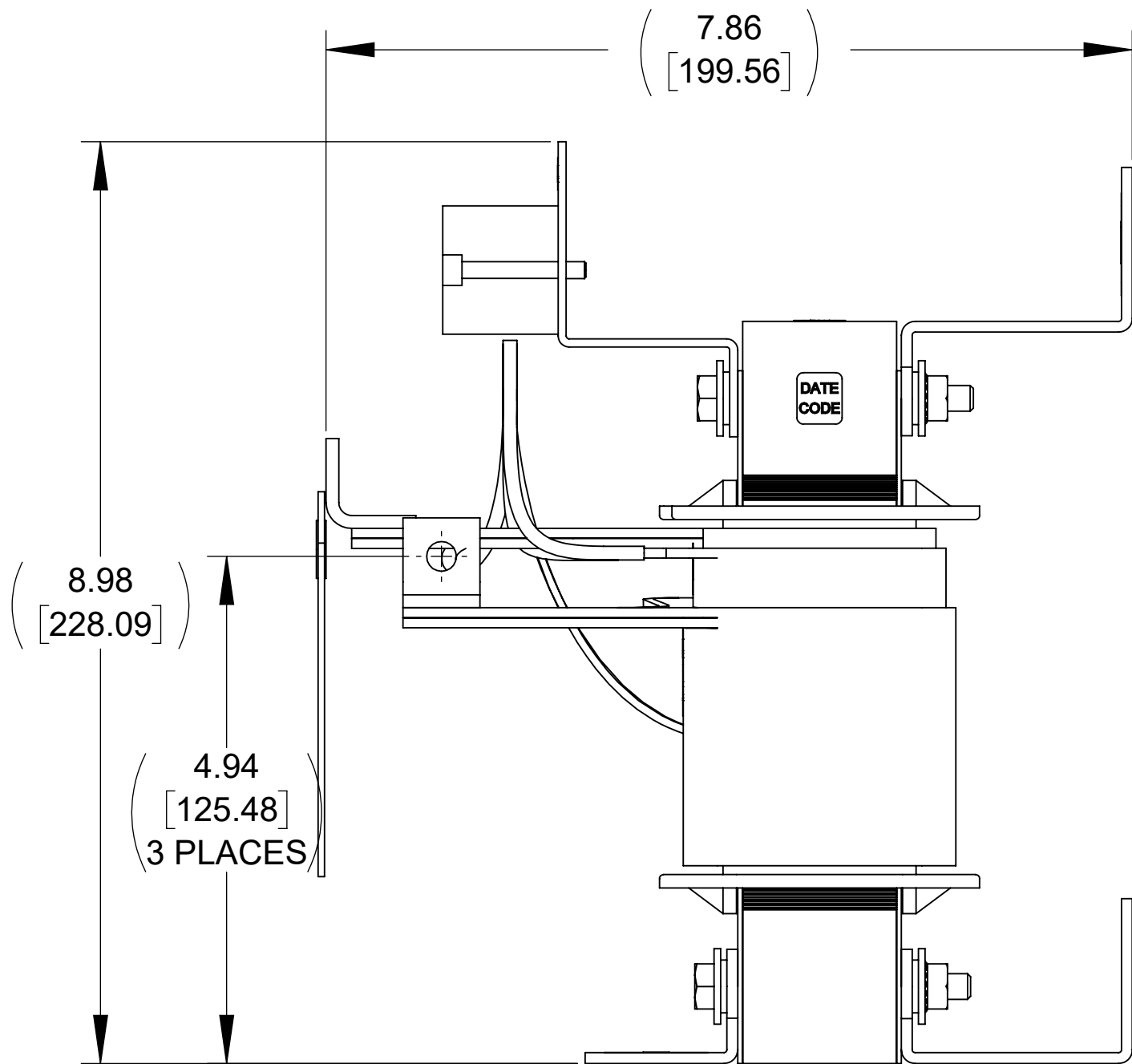
SEE NOTE 2



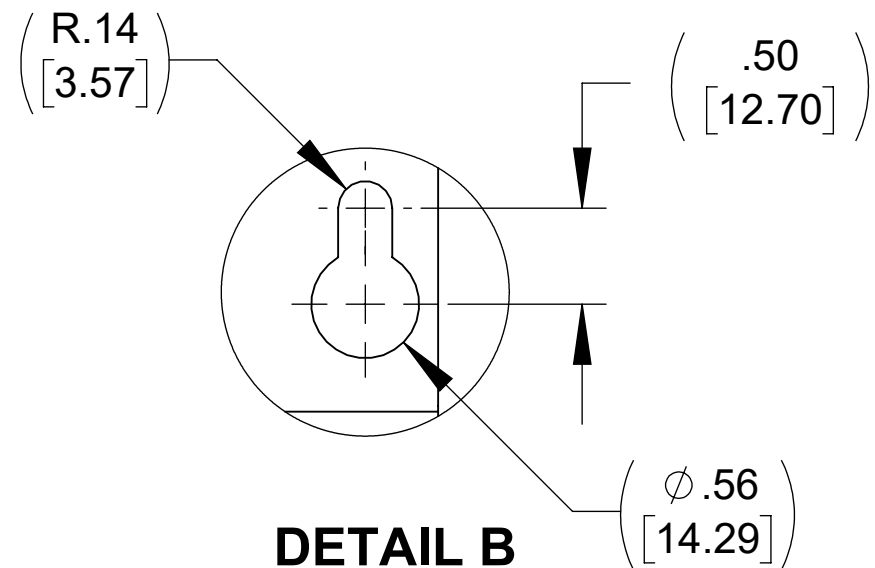
DETAIL A  
CUSTOMER CONNECTION  
DETAIL VIEW



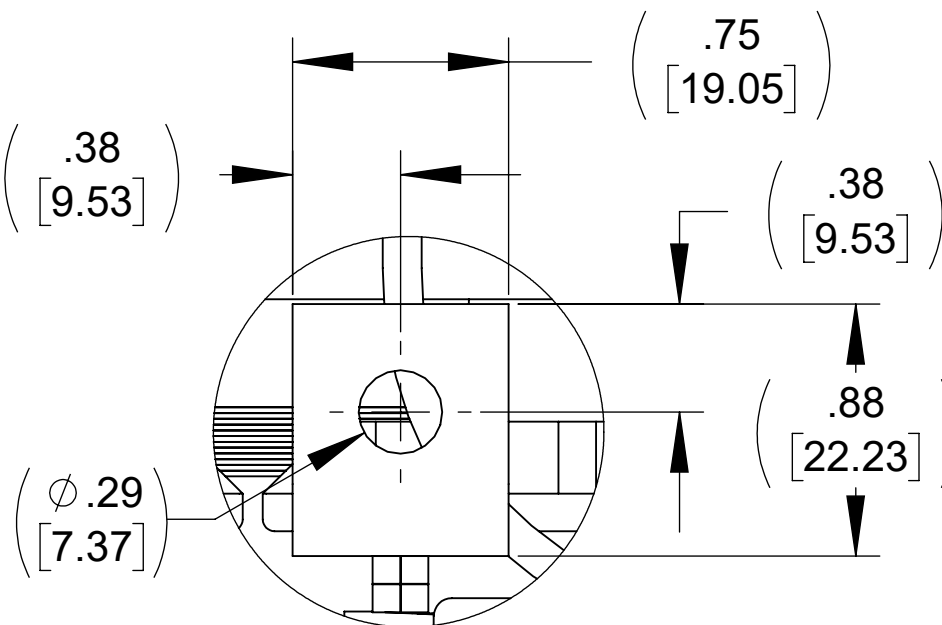
FRONT VIEW



SIDE VIEW




DETAIL B  
(2 PLACES)



DETAIL C  
CUSTOMER CONNECTION  
DETAIL VIEW  
(6 PLACES)

NOTES:

1. TIGHTEN TERMINAL BLOCK SCREWS TO 16 IN/LBS. TORQUE.
2. TERMINAL WIRE SIZE: 4-14 AWG.
3. FILTER INCLUDES: CAP-537SW (QTY. 1).

THE COMPONENT, PART OR ASSEMBLY DESCRIBED IN THIS DOCUMENT MUST COMPLY WITH THE EU(EUROPEAN UNION) DIRECTIVE RoHS2		MATERIAL		CONFIDENTIAL AND PROPRIETARY INFORMATION THIS DOCUMENT CONTAINS CONFIDENTIAL AND PROPRIETARY INFORMATION OF MTE CORPORATION AND MAY NOT BE USED, COPIED OR DISCLOSED TO OTHERS EXCEPT WITH THE AUTHORIZED WRITTEN PERMISSION OF MTE CORPORATION			
CONTAINS <0.1% OF ANY SVHC BY WEIGHT PER REACH REGULATION				DESCRIPTION			
<div>UNLESS OTHERWISE SPECIFIED DIMENSIONS ARE IN INCHES [MM] TOLERANCES ARE:</div> <div>ANGLES: ± 1 °</div> <div>1 PLACE .X: ± .1 [2.5]</div> <div>2 PLACE .XX: ± .03 [0.76]</div> <div>3 PLACE .XXX: ± .010 [0.254]</div> <div><div>N83 W13330 Leon Road Menomonee Falls, WI 53051 USA 800.455-4683 262.253-8200</div></div>		DRAWN		DATE		SWG 70A 208-240V 2-8kHz FILTER, OPEN PANEL	
		MN		07/26/18			
		CHECKED		DATE			
		CH		11/11/19			
		APPROVED		DATE		SIZE	
		PY		12/04/19		D	
				SCALE		DWG No.	
				2:3		CD SWGM0070A	
						REV	
						00	
						SHEET 1 OF 1	