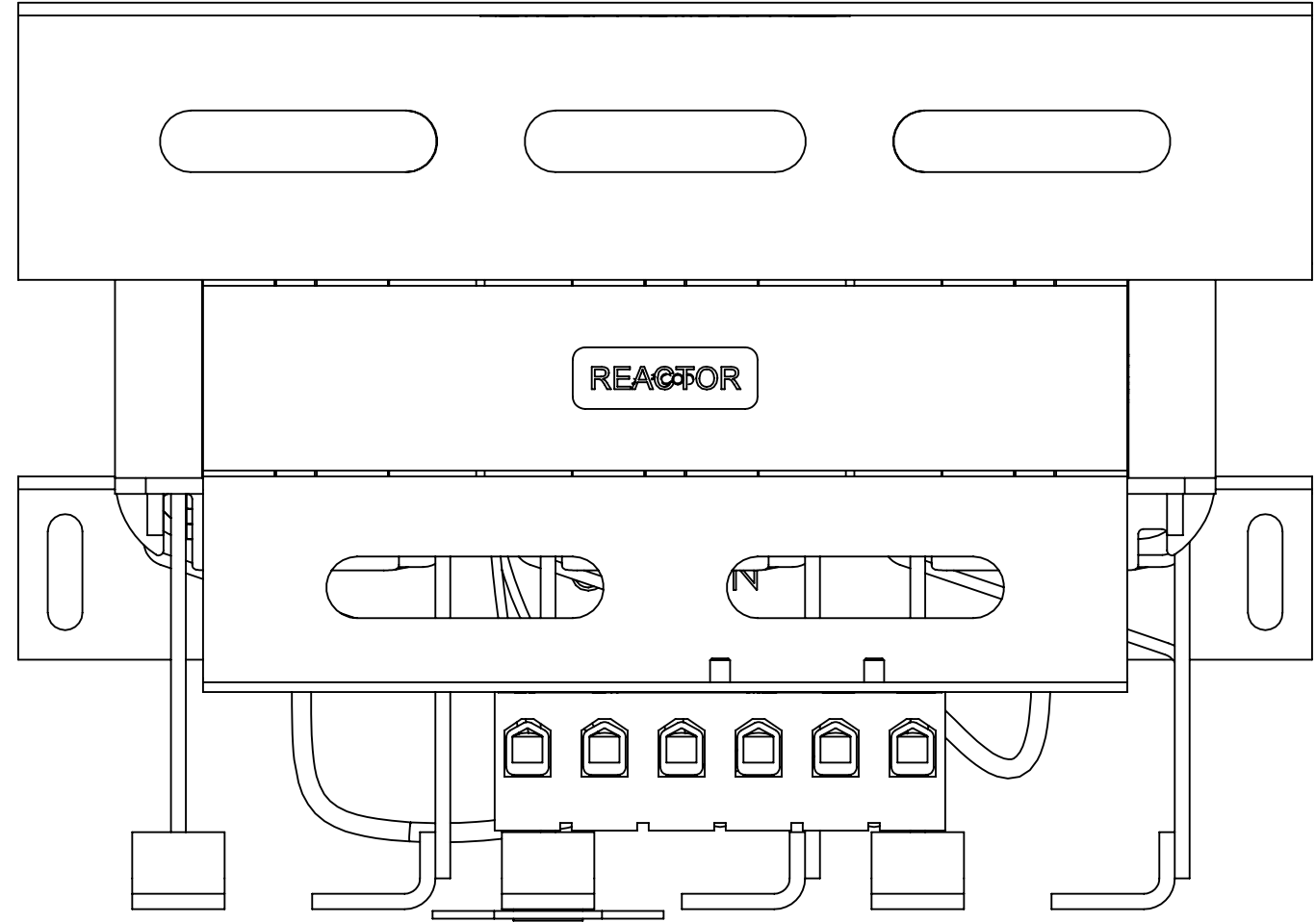
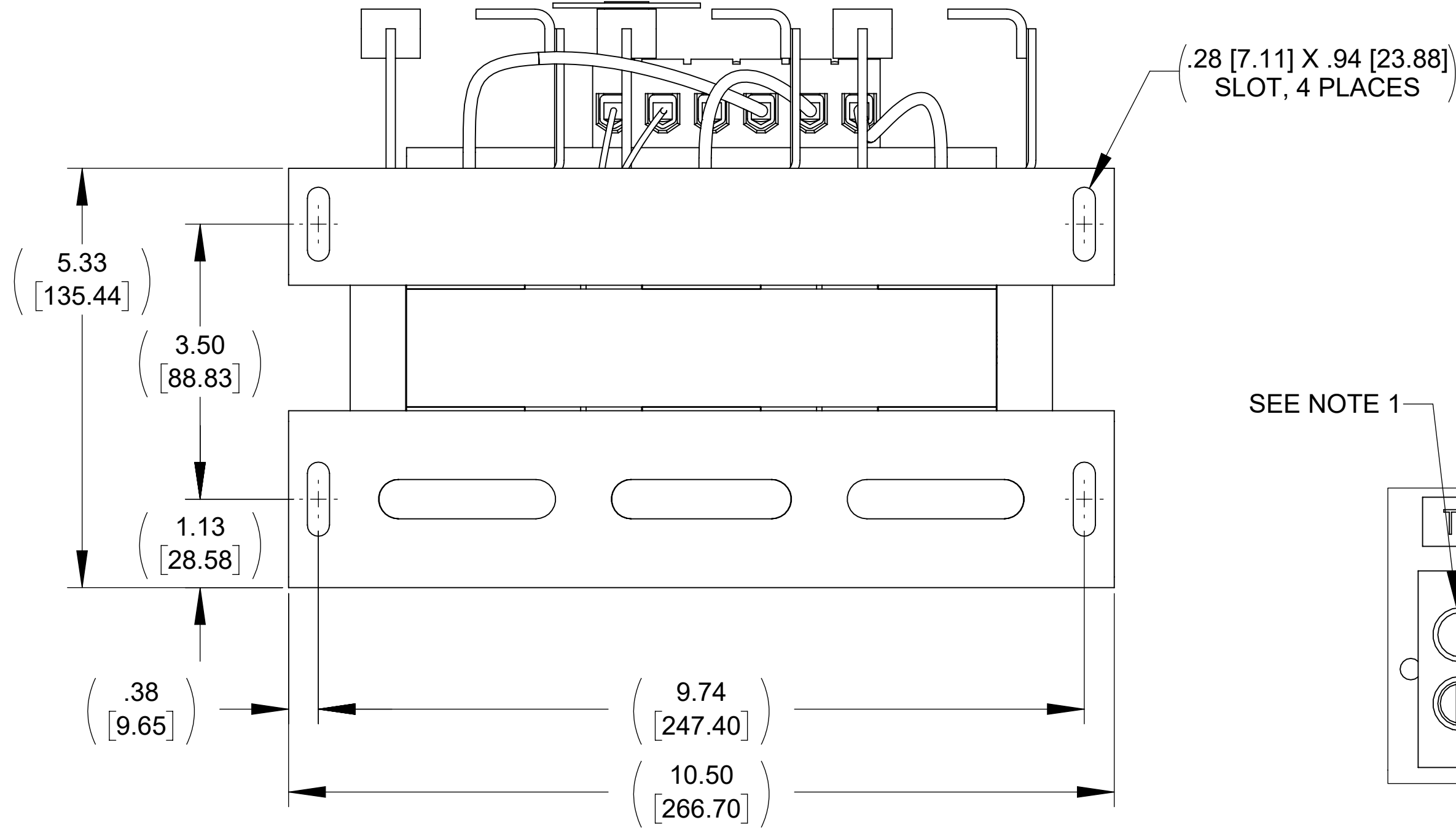


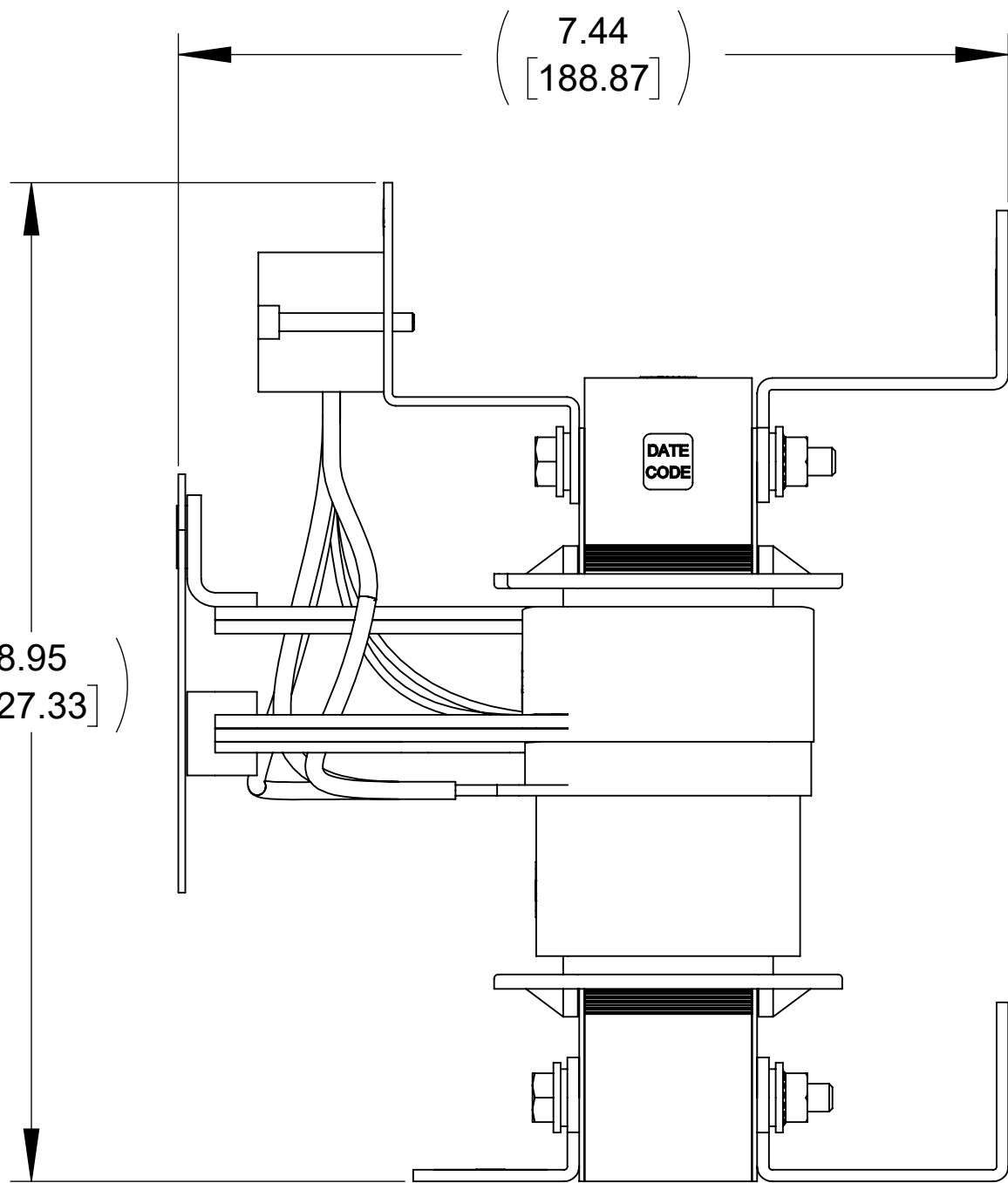
APPROX. WEIGHT  
(LBS)  
32



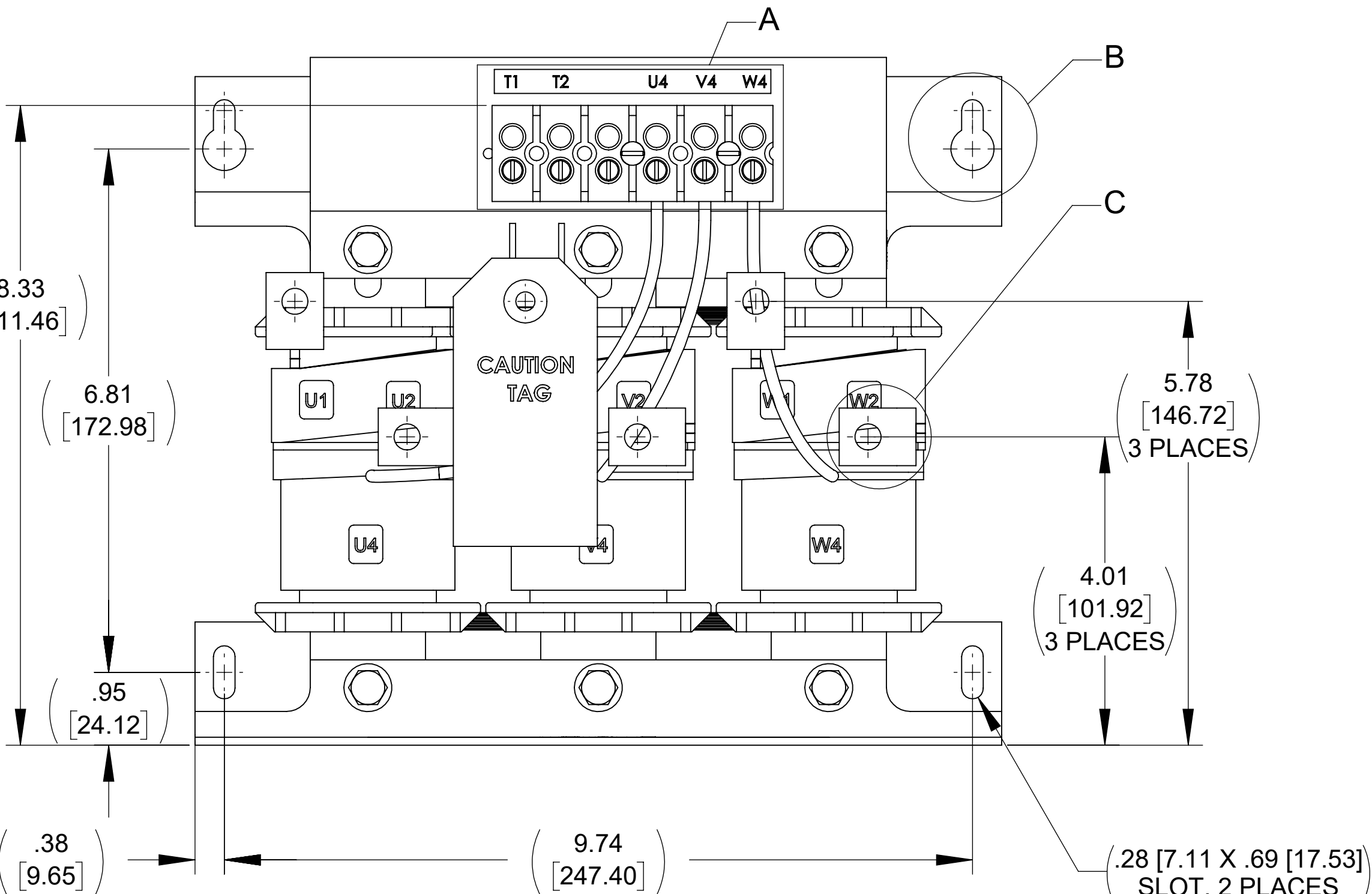
TOP VIEW



BOTTOM VIEW



SIDE VIEW

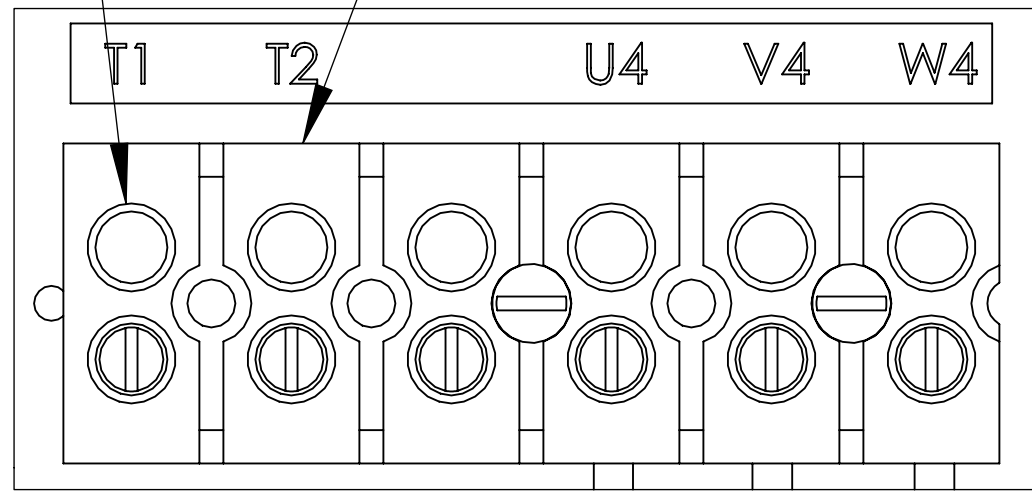


FRONT VIEW

(.28 [7.11] X .94 [23.88])  
SLOT, 4 PLACES

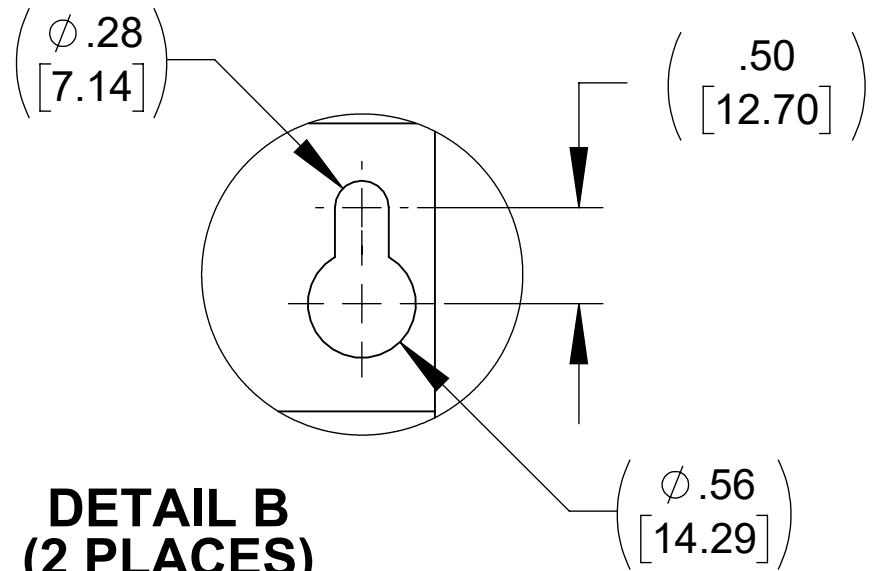
SEE NOTE 1

SEE NOTE 2

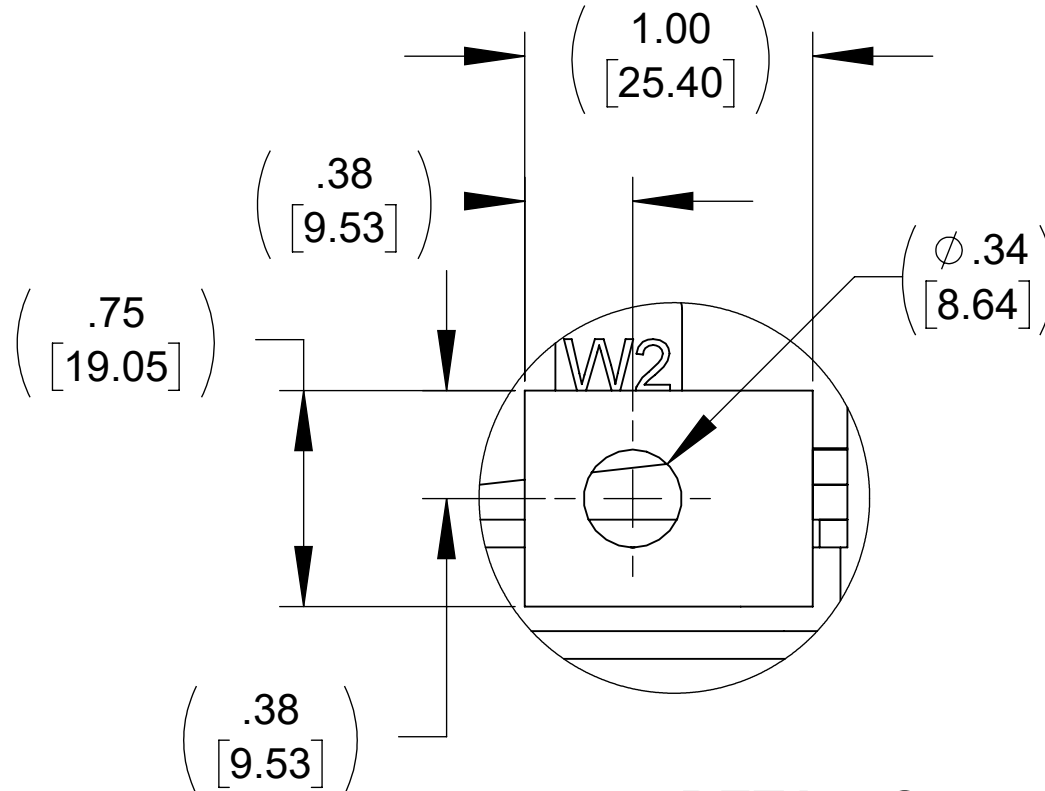


DETAIL A  
CUSTOMER CONNECTION  
DETAIL VIEW

DETAIL B  
(2 PLACES)



DETAIL C  
CUSTOMER CONNECTION  
DETAIL VIEW  
(6 PLACES)



NOTES:

1. TERMINAL WIRE RANGE: 4-14 AWG.
2. TERMINAL SCREW TIGHTENING TORQUE: 16 IN/LBS.
3. REFER TO USER MANUAL FOR COMPLETE INSTALLATION INSTRUCTIONS.
4. FILTER INCLUDES: CAP-515SW (QTY. 1).

THE COMPONENT, PART OR ASSEMBLY DESCRIBED IN THIS DOCUMENT MUST COMPLY WITH THE EU(EUROPEAN UNION) DIRECTIVE RoHS2		MATERIAL		CONFIDENTIAL AND PROPRIETARY INFORMATION THIS DOCUMENT CONTAINS CONFIDENTIAL AND PROPRIETARY INFORMATION OF MTE CORPORATION AND MAY NOT BE USED, COPIED OR DISCLOSED TO OTHERS EXCEPT WITH THE AUTHORIZED WRITTEN PERMISSION OF MTE CORPORATION		
CONTAINS <0.1% OF ANY SVHC BY WEIGHT PER REACH REGULATION				DESCRIPTION		
UNLESS OTHERWISE SPECIFIED DIMENSIONS ARE IN INCHES [MM] TOLERANCES ARE:  ANGLES: ± 1 °  1 PLACE .X: ± .1 [2.5]  2 PLACE .XX: ± .03 [0.76]  3 PLACE .XXX: ± .010 [0.254]		<b>MTE</b> POWER QUALITY. SOLVED.  N83 W13330 Leon Road Menomonee Falls, WI 53051 USA 800.455.4683 262.253.8200		SWG 55A 208-240V 2-8kHz FILTER, OPEN PANEL		
		DRAWN KV CHECKED KV APPROVED AK		DATE 05/08/19 DATE 5/15/19 DATE 09/23/19		SIZE D
				DWG No. CD SWGM0055A		REV 00
				SCALE 2:3		SHEET 1 OF 1