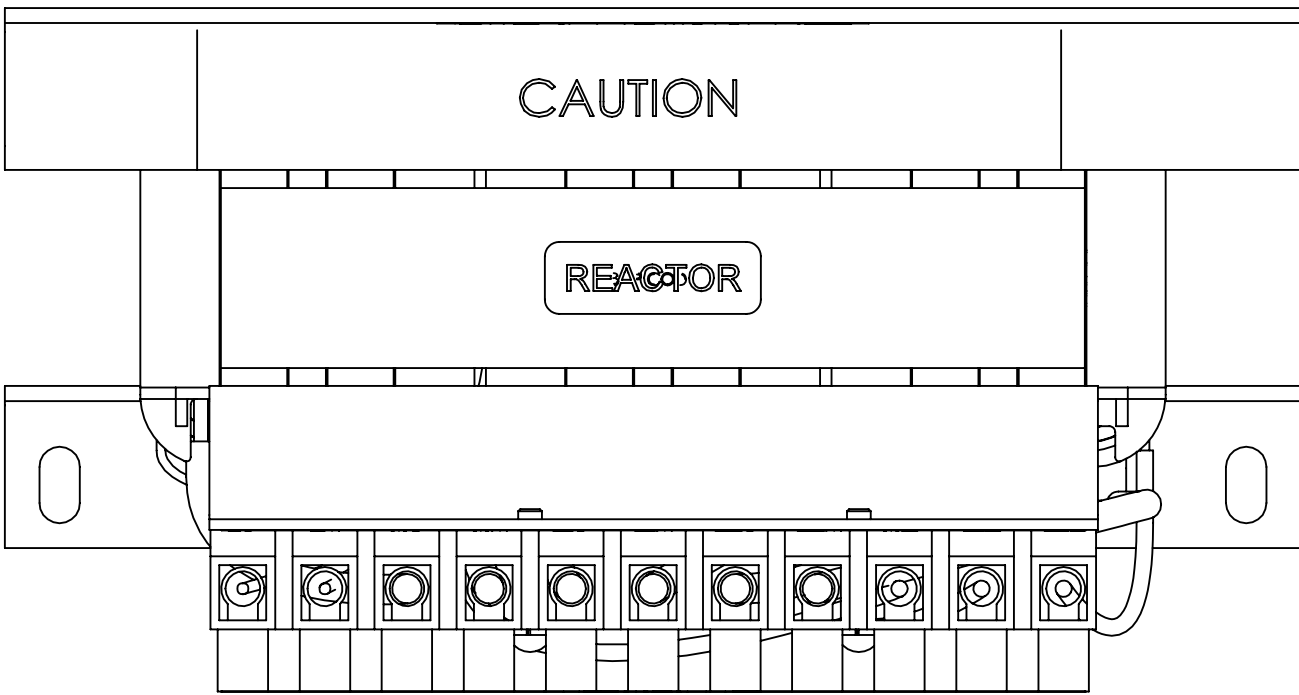
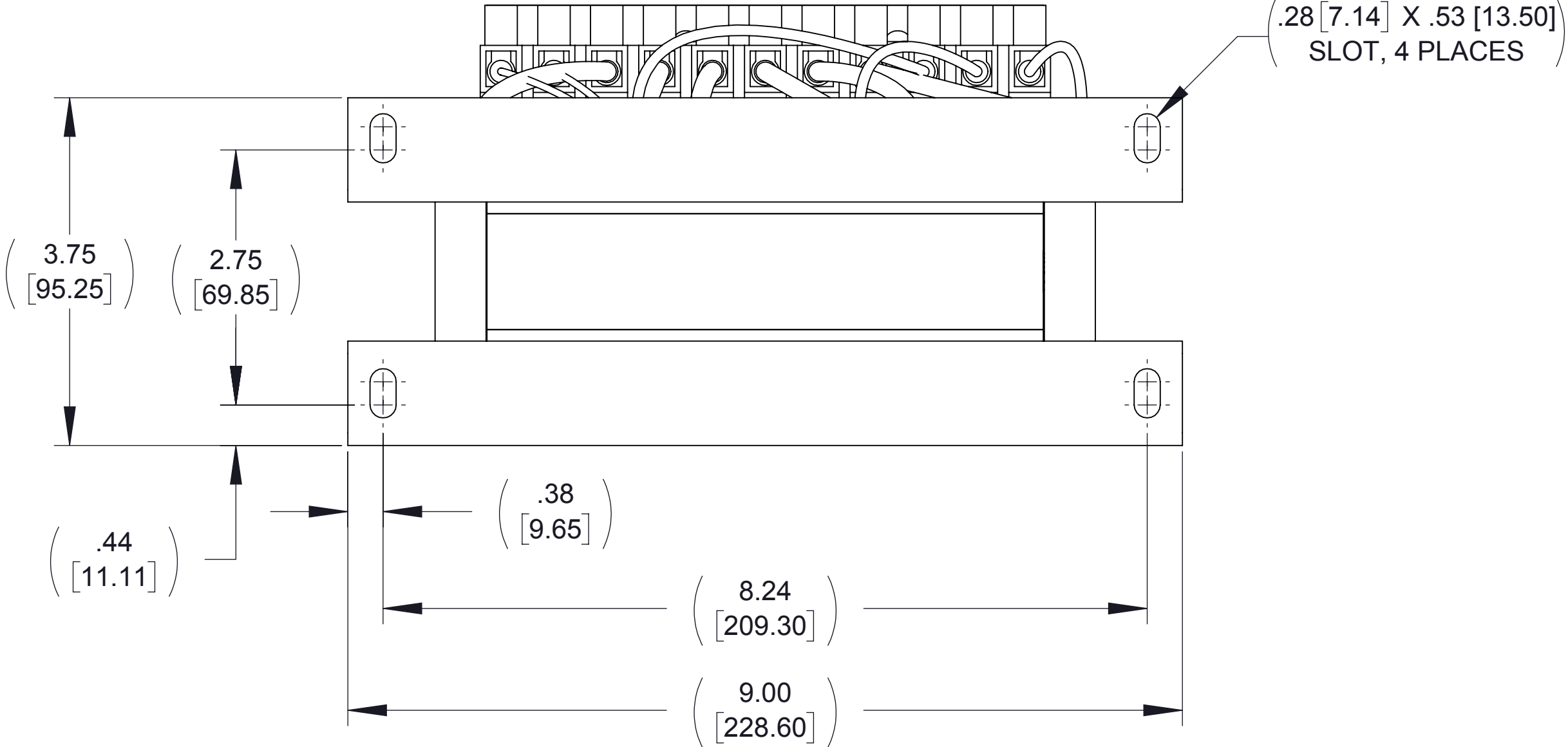


APPROX. WEIGHT  
(LBS)  
20

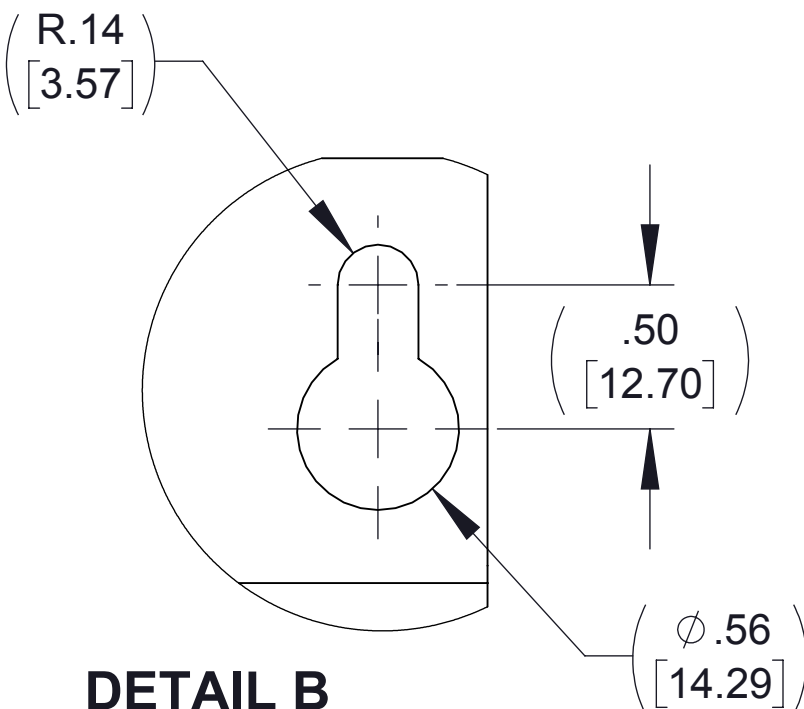
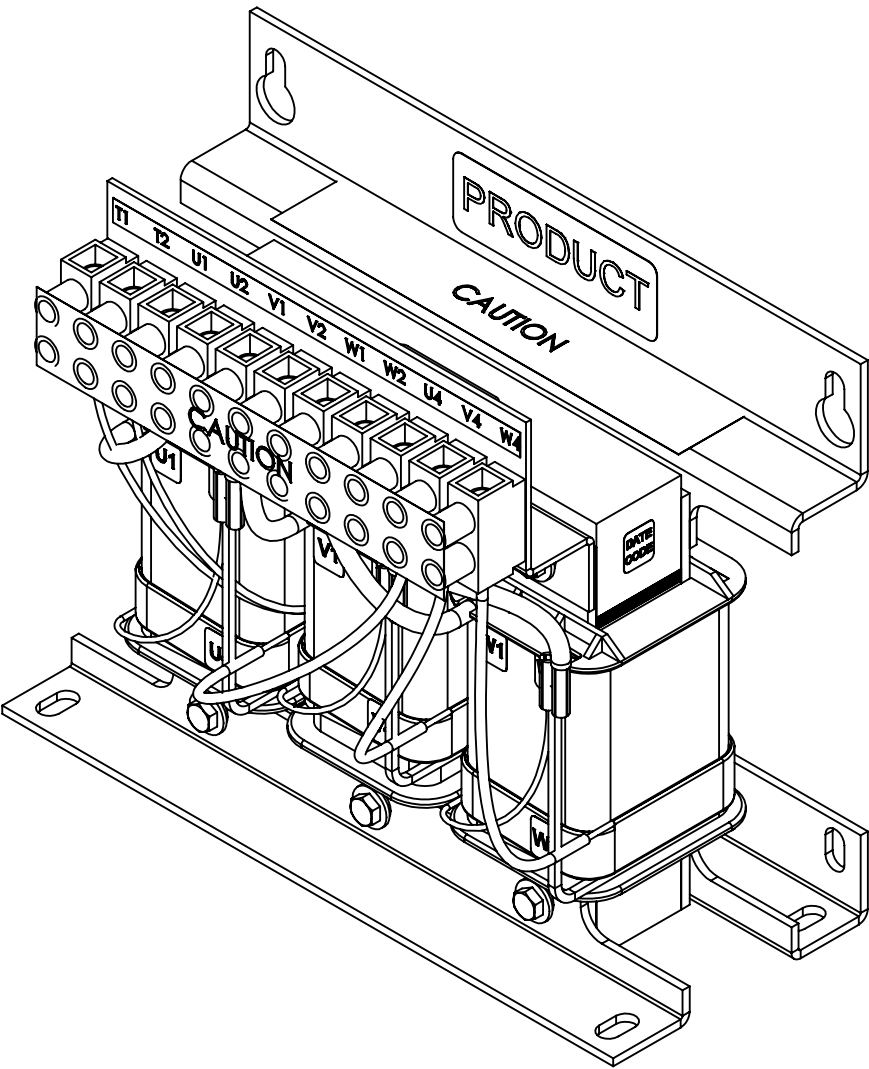
F	DESCRIPTION	REV BY	DATE
M11035	CHANGED CAPPANEL-150 TO CAP-522SW	CR	06/14/18



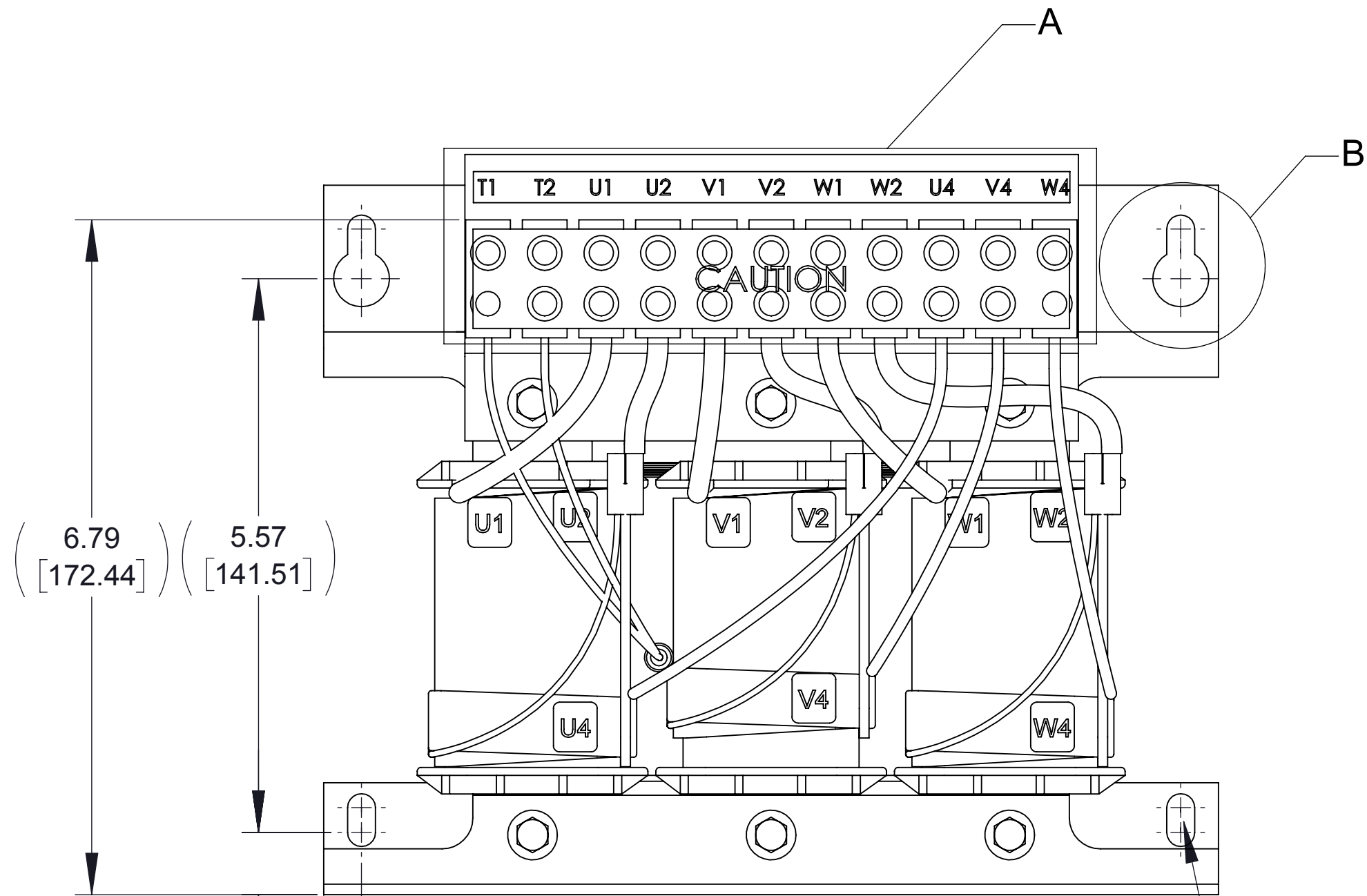
TOP VIEW



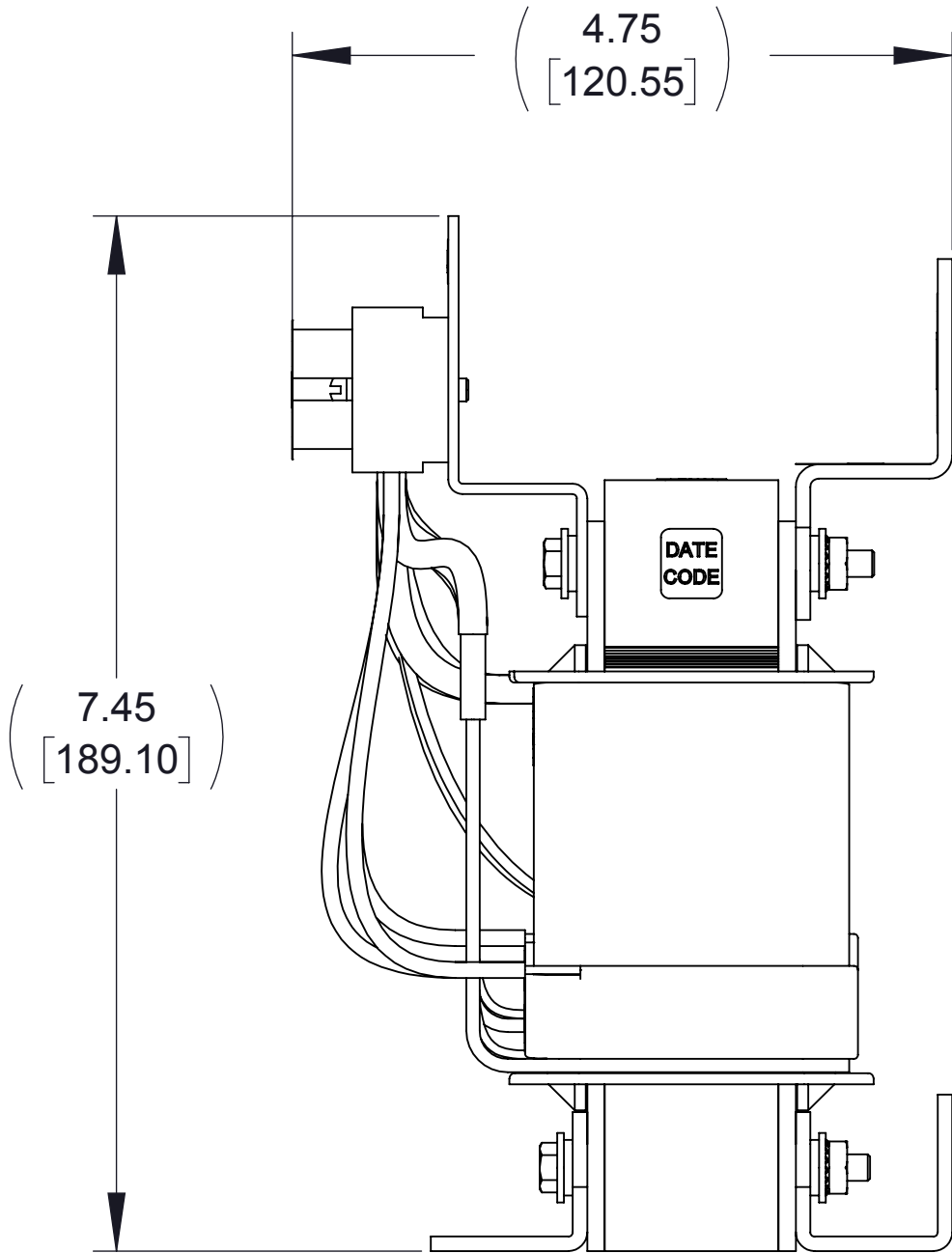
BOTTOM VIEW



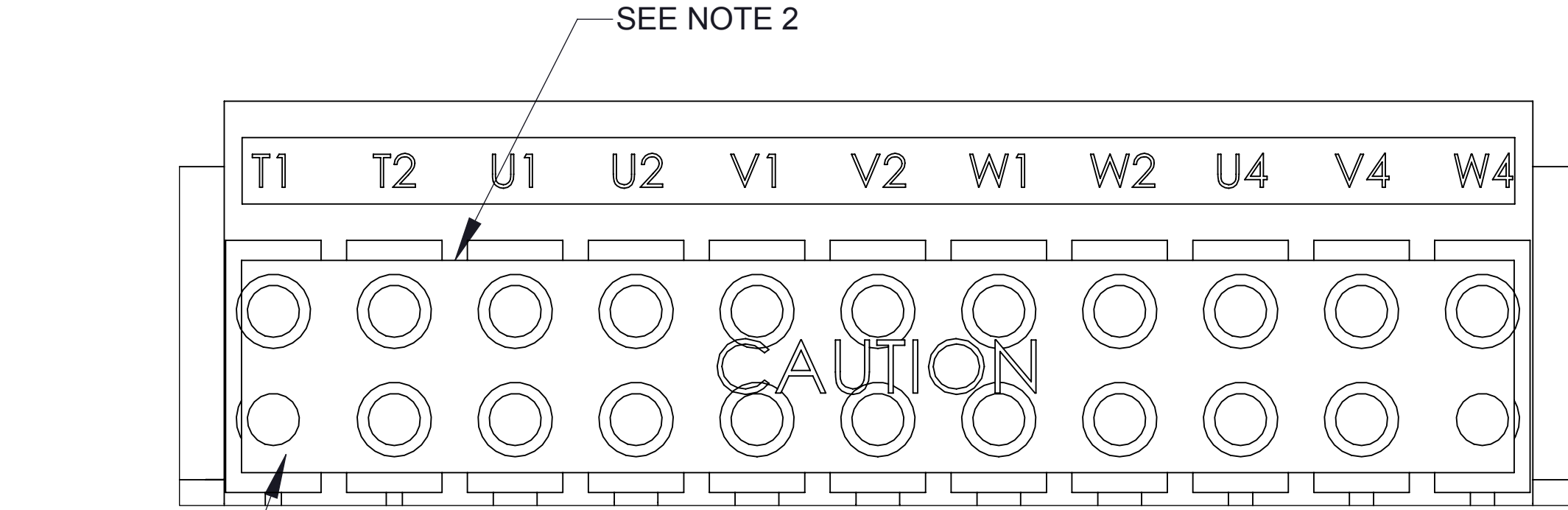
DETAIL B  
(2 PLACES)



FRONT VIEW



RIGHT SIDE VIEW



DETAIL A  
CUSTOMER CONNECTION  
DETAIL VIEW

- NOTES:  
1. TIGHTEN TERMINAL BLOCK SCREWS TO 16IN/LBS. TORQUE  
2. TERMINAL WIRE SIZE: 4-14 AWG.  
3. FILTER INCLUDES: CAP-522SW (QTY. 1).

THE COMPONENT, PART OR ASSEMBLY DESCRIBED IN THIS DOCUMENT MUST COMPLY WITH THE EU(EUROPEAN UNION) DIRECTIVE RoHS2			MATERIAL		CONFIDENTIAL AND PROPRIETARY INFORMATION THIS DOCUMENT CONTAINS CONFIDENTIAL AND PROPRIETARY INFORMATION OF MTE CORPORATION AND MAY NOT BE USED, COPIED OR DISCLOSED TO OTHERS EXCEPT WITH THE AUTHORIZED WRITTEN PERMISSION OF MTE CORPORATION		
CONTAINS <0.1% OF ANY SVHC BY WEIGHT PER REACH REGULATION					DESCRIPTION		
UNLESS OTHERWISE SPECIFIED DIMENSIONS ARE IN INCHES [MM] TOLERANCES ARE:  ANGLES: ± 1 °  1 PLACE .X: ± .1 [2.5]  2 PLACE .XX: ± .03 [0.76]  3 PLACE .XXX: ± .010 [0.254]			DRAWN KV 02/20/18		SWG 12A 600V 2-8kHz OPEN PANEL		
			CHECKED KV 06/20/18		SIZE D		
			APPROVED RH 10/22/18		DWG No. CD SWGM0012E		
					REV 02		
					SCALE 3:4		
					SHEET 1 OF 1		



N83 W13330 Leon Road  
Menomonee Falls, WI 53051 USA  
800.455-4683  
262.253-8200