

APPROX. WEIGHT (LBS)
699

ECO No	DESCRIPTION	REV BY	DATE
M11344	REMOVEDFIELD LUGS AND ASSOCIATED HARDWARE	JD	10/09/18

D

C

B

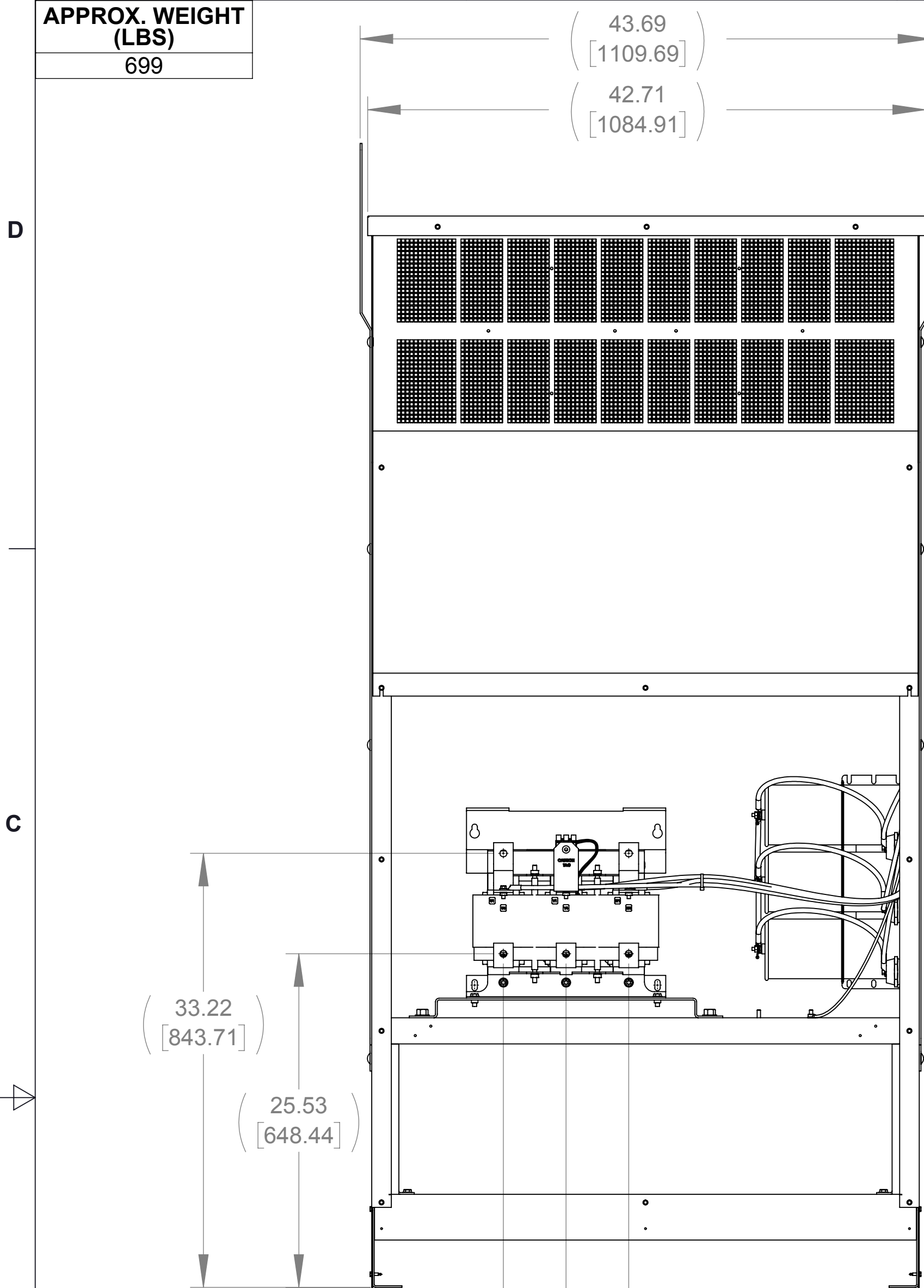
A

D

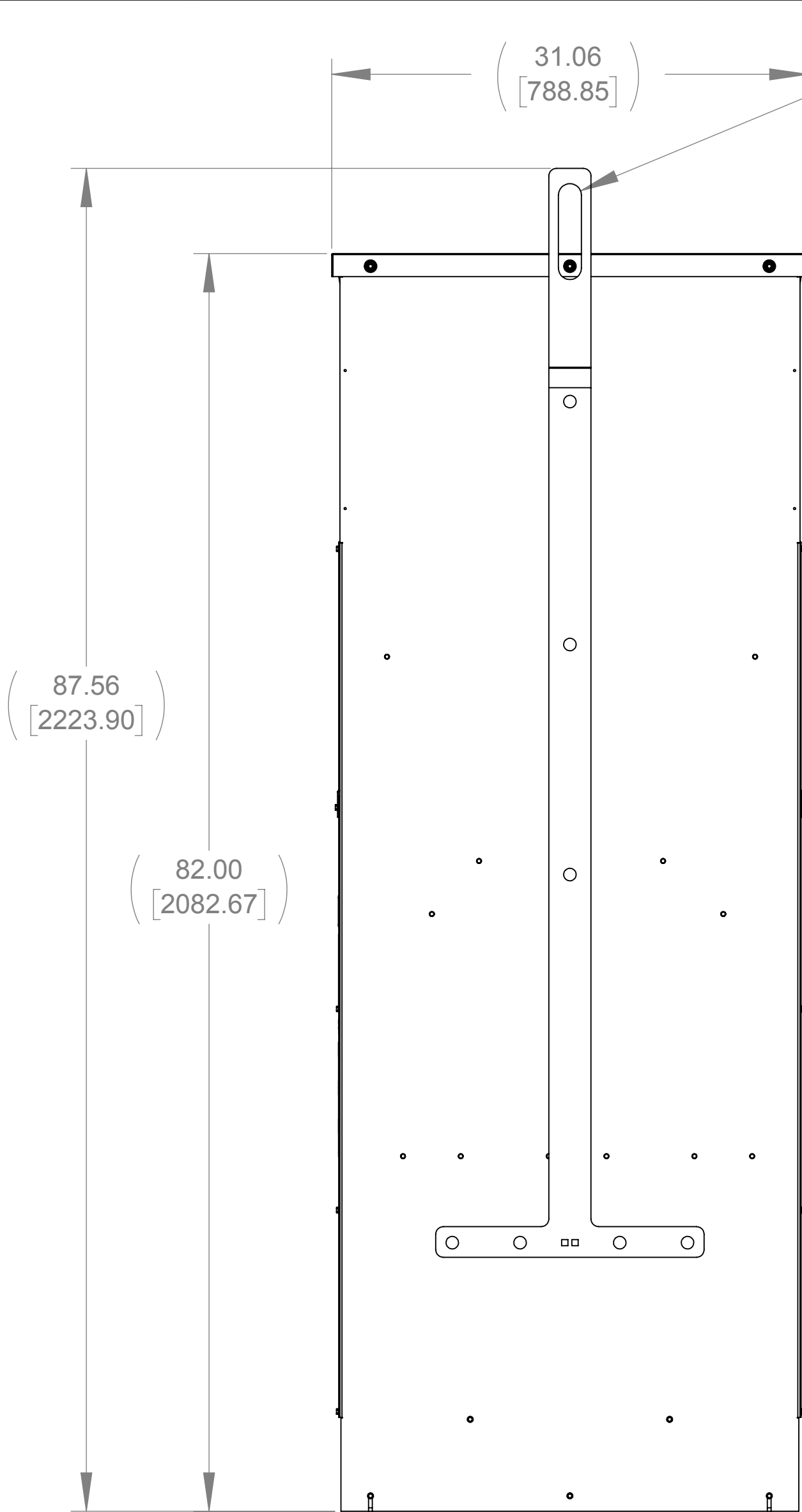
C

B

A

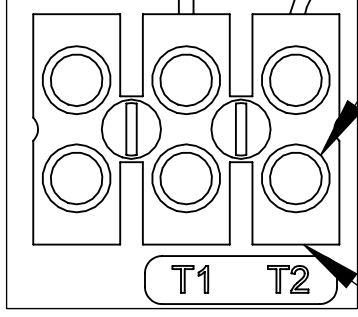


FRONT VIEW
(FRONT PANEL REMOVED)



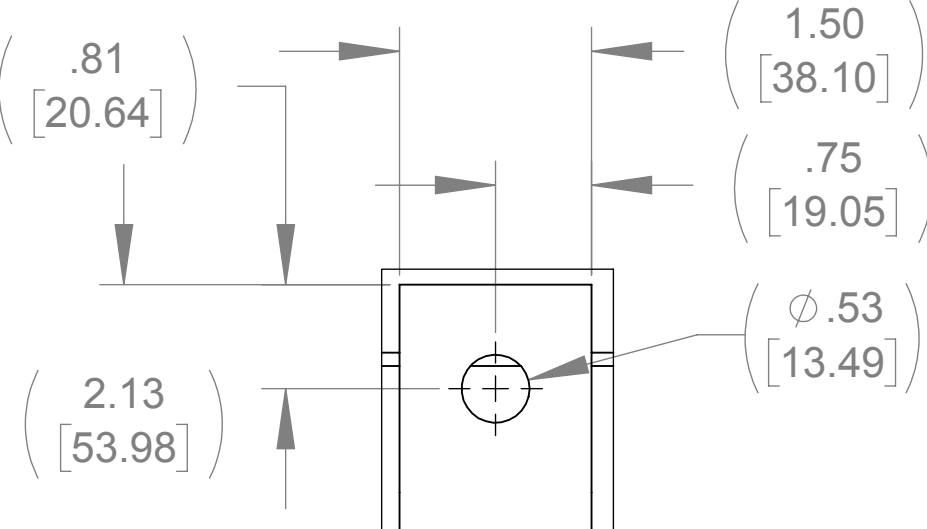
RIGHT SIDE VIEW

(1.50 [38.10] X 4.50 [114.30])
SLOT, 2 PLACES

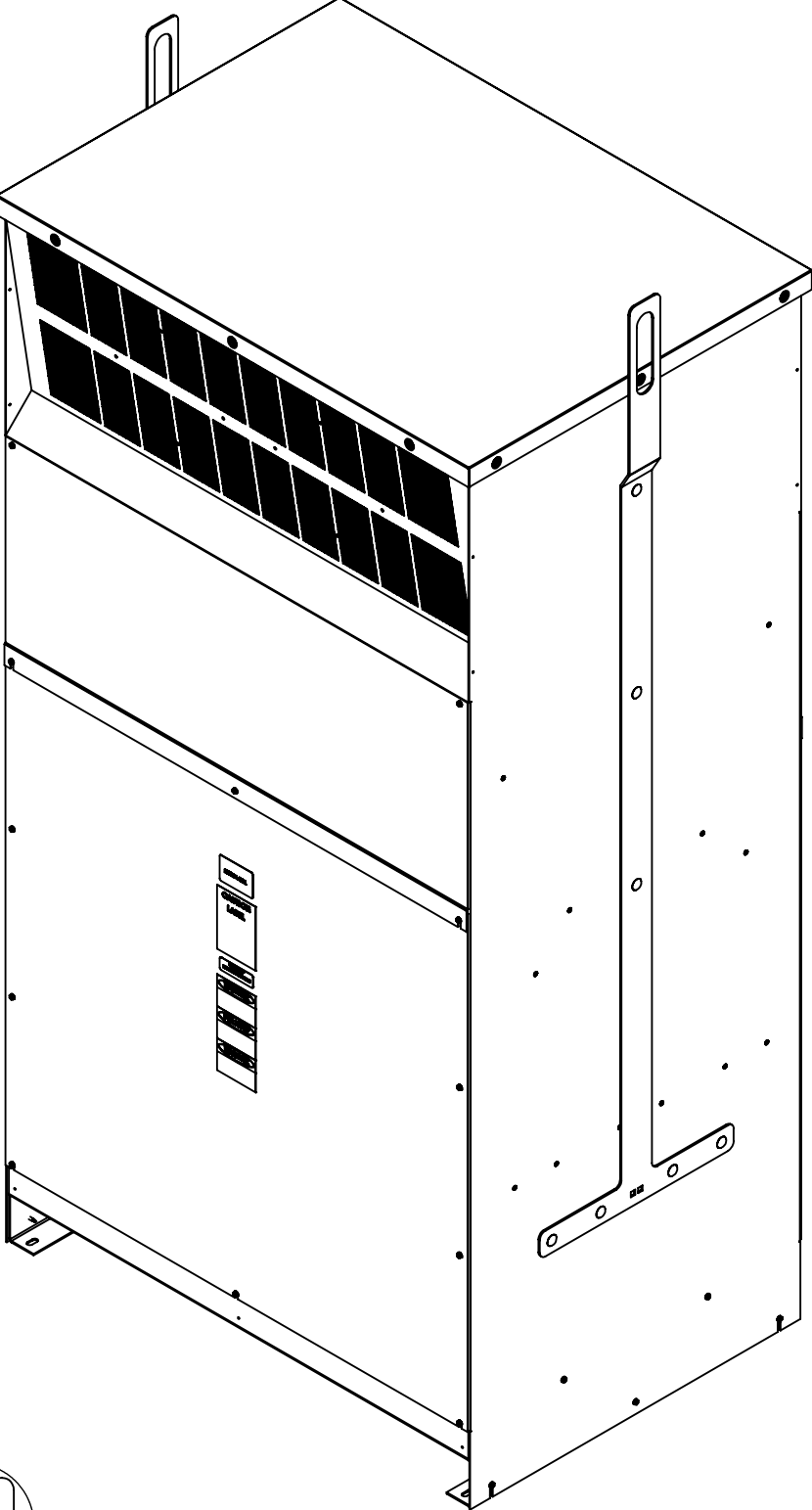


SEE NOTE 1
SEE NOTE 2

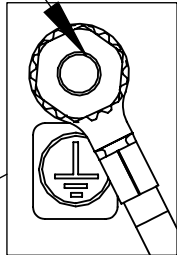
DETAIL A
CUSTOMER CONNECTION
DETAIL VIEW (THERMAL)



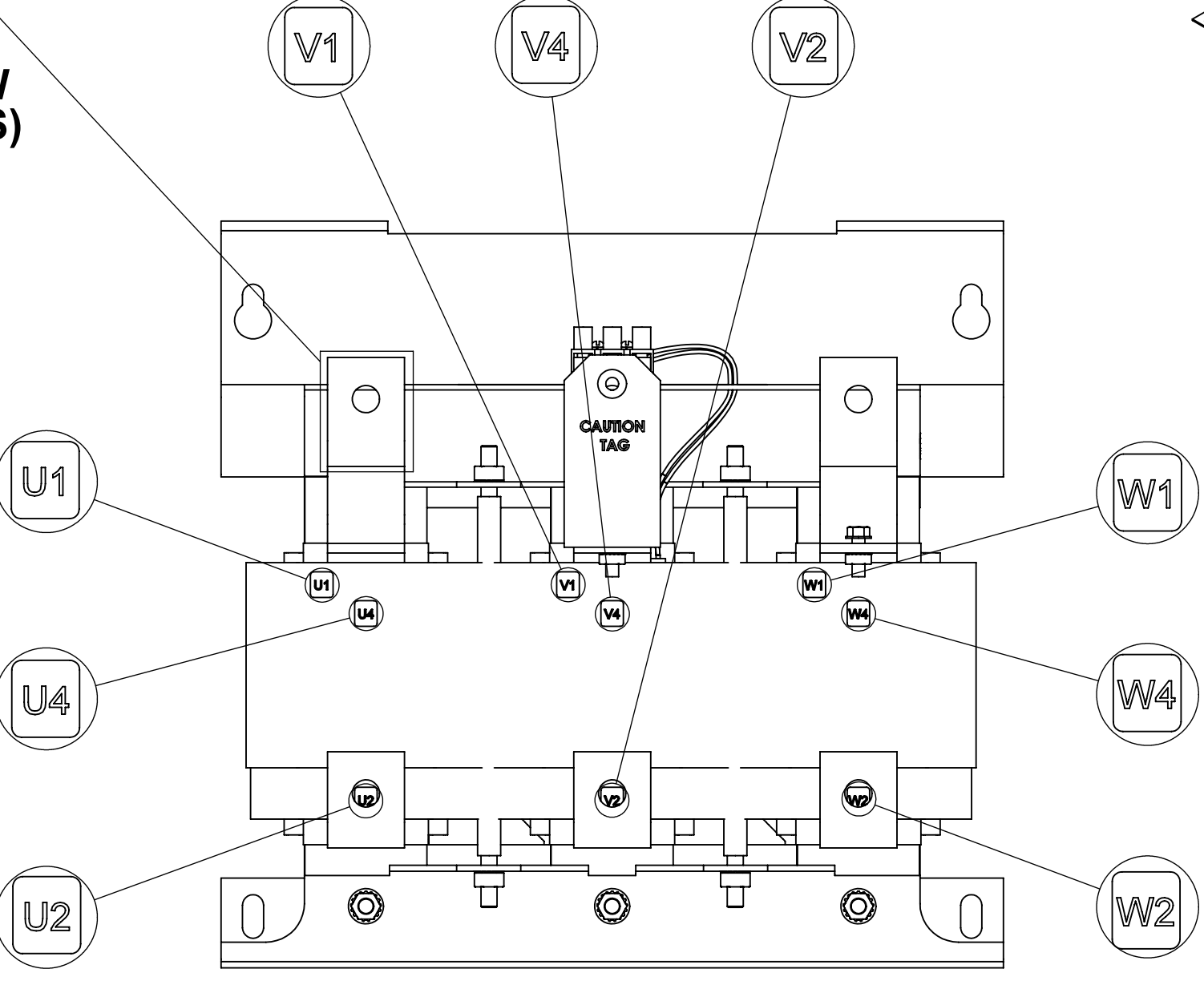
LUG VIEW
(6 PLACES)



1/4-20 GROUND STUD

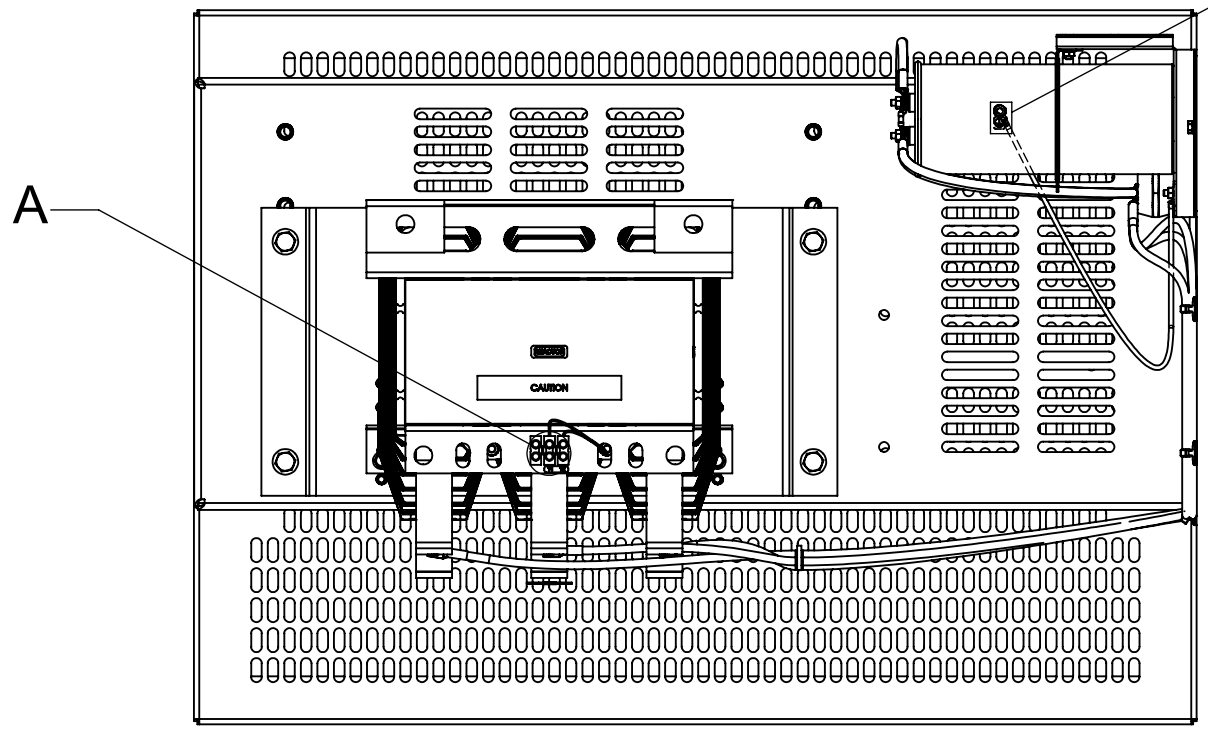


(UNDER CAPPANEL)

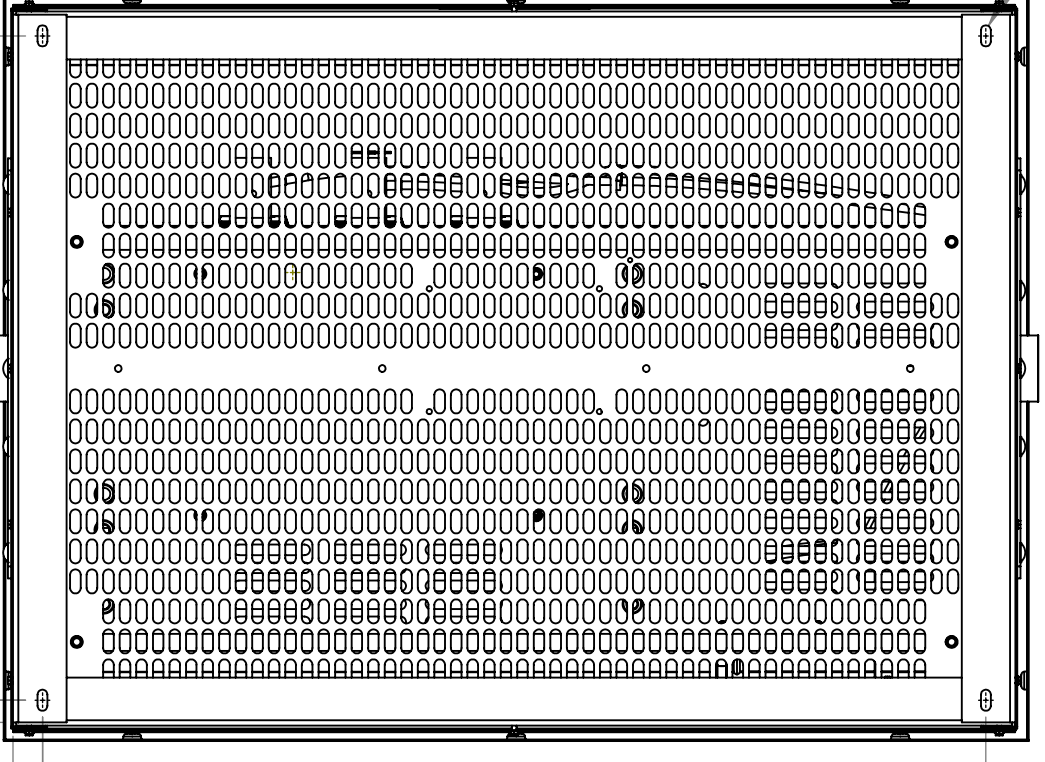


CUSTOMER CONNECTION
DETAIL VIEW

- NOTES:
1. TIGHTEN TERMINAL BLOCK SCREWS TO 16 IN/LBS. TORQUE.
2. TERMINAL WIRE SIZE: 4-14 AWG.



TOP VIEW
(TOP HAT REMOVED)



BOTTOM VIEW

THE COMPONENT, PART OR ASSEMBLY DESCRIBED IN THIS DOCUMENT MUST COMPLY WITH THE EU (EUROPEAN UNION) DIRECTIVE RoHS2		MATERIAL		CONFIDENTIAL AND PROPRIETARY INFORMATION THIS DOCUMENT CONTAINS CONFIDENTIAL AND PROPRIETARY INFORMATION OF MTE CORPORATION AND MAY NOT BE USED, COPIED OR DISCLOSED TO OTHERS EXCEPT WITH THE AUTHORIZED WRITTEN PERMISSION OF MTE CORPORATION	
CONTAINS <0.1% OF ANY SVHC BY WEIGHT PER REACH REGULATION				DESCRIPTION	
UNLESS OTHERWISE SPECIFIED DIMENSIONS ARE IN INCHES [MM] TOLERANCES ARE: ANGLES: ± 1 ° 1 PLACE .X: ± .1 [2.5] 2 PLACE .XX: ± .03 [0.76] 3 PLACE .XXX: ± .010 [0.254]		DRAWN KV CHECKED JD APPROVED CK		DATE 05/11/18 10/09/18 10/11/18	
		N83 W13330 Leon Road Menomonee Falls, WI 53051 USA 800.455.4683 262.253.8200		SIZE D DWG No. CD SWGG0250E REV 03	
		SCALE 1:8		SHEET 1 OF 1	