

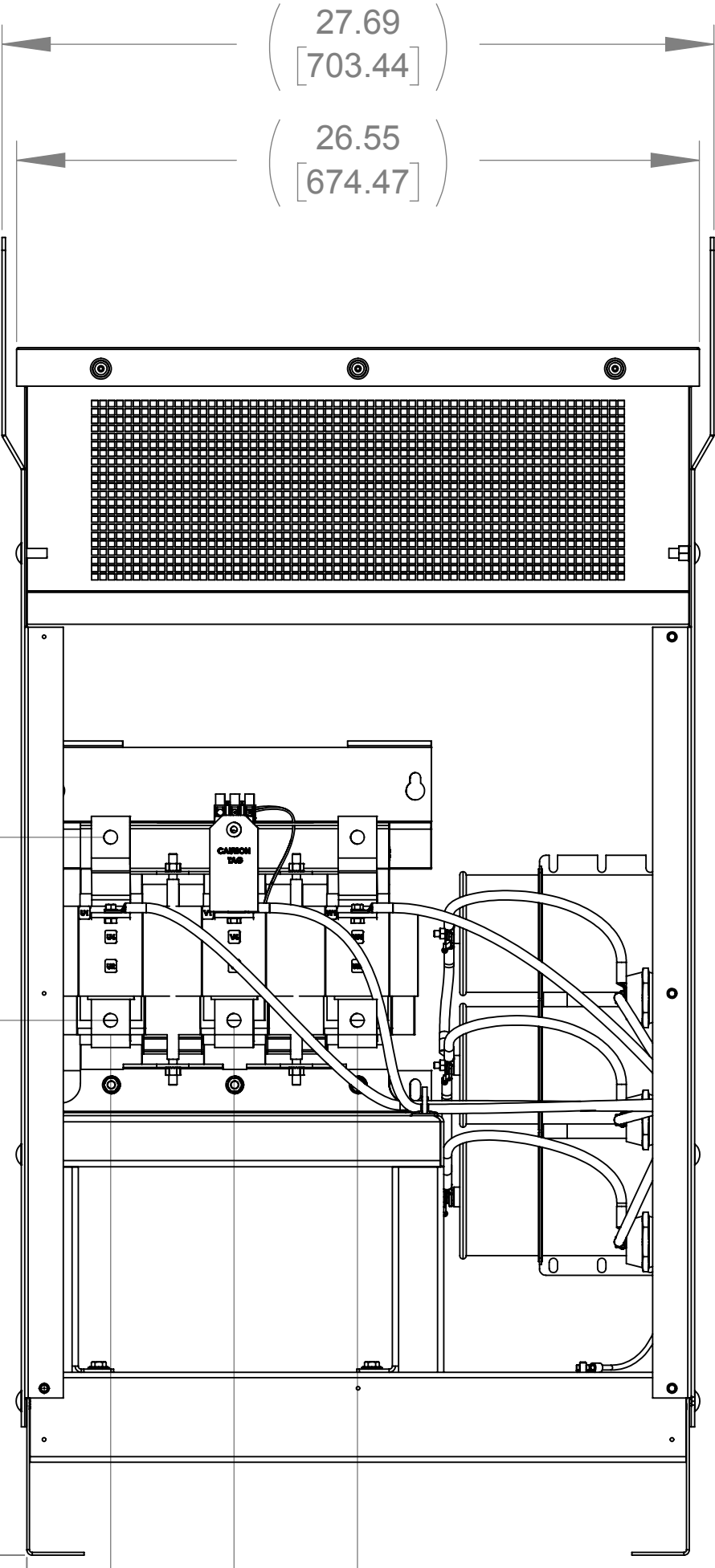
APPROX. WEIGHT  
(LBS)  
414

D

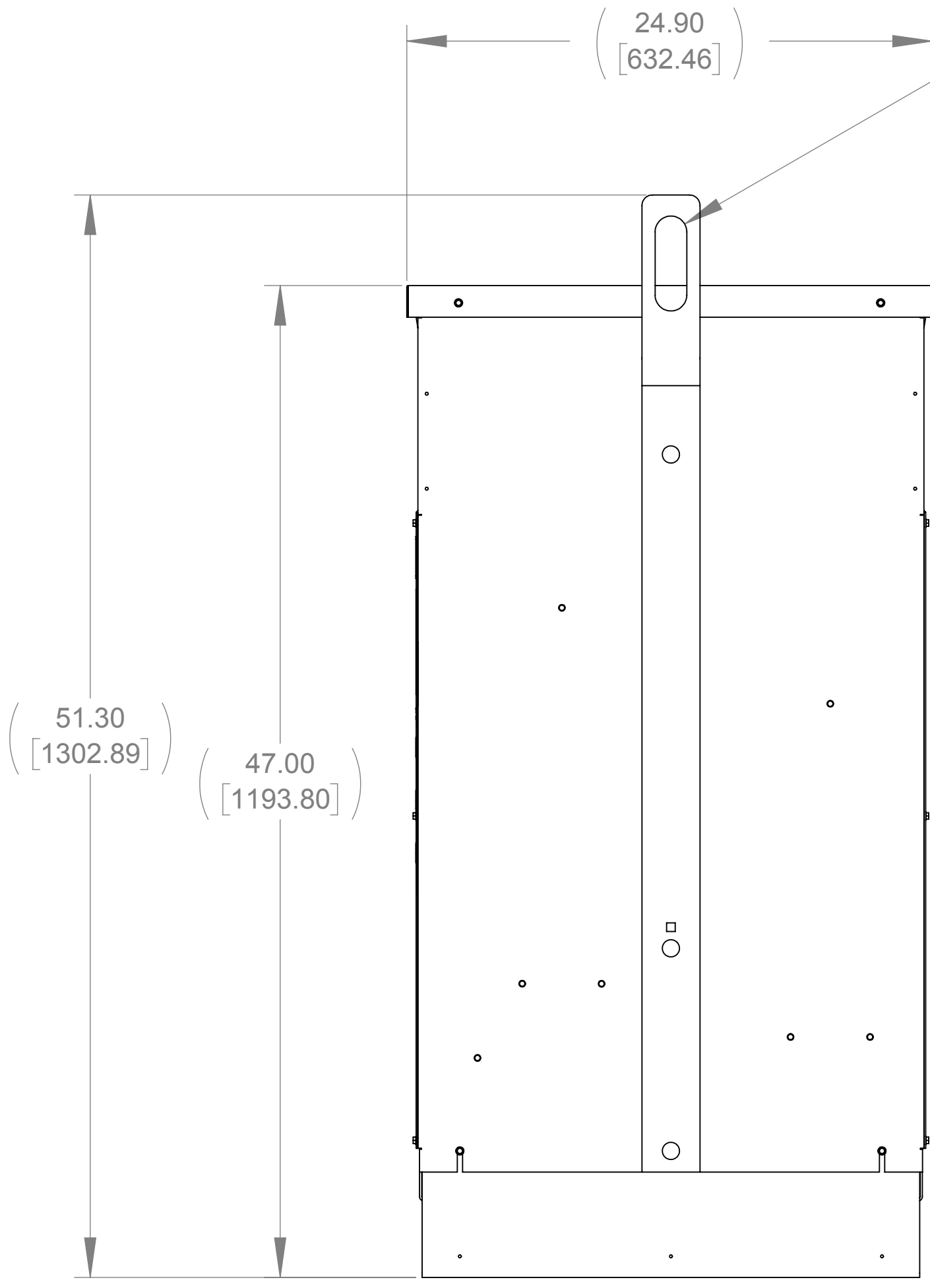
C

B

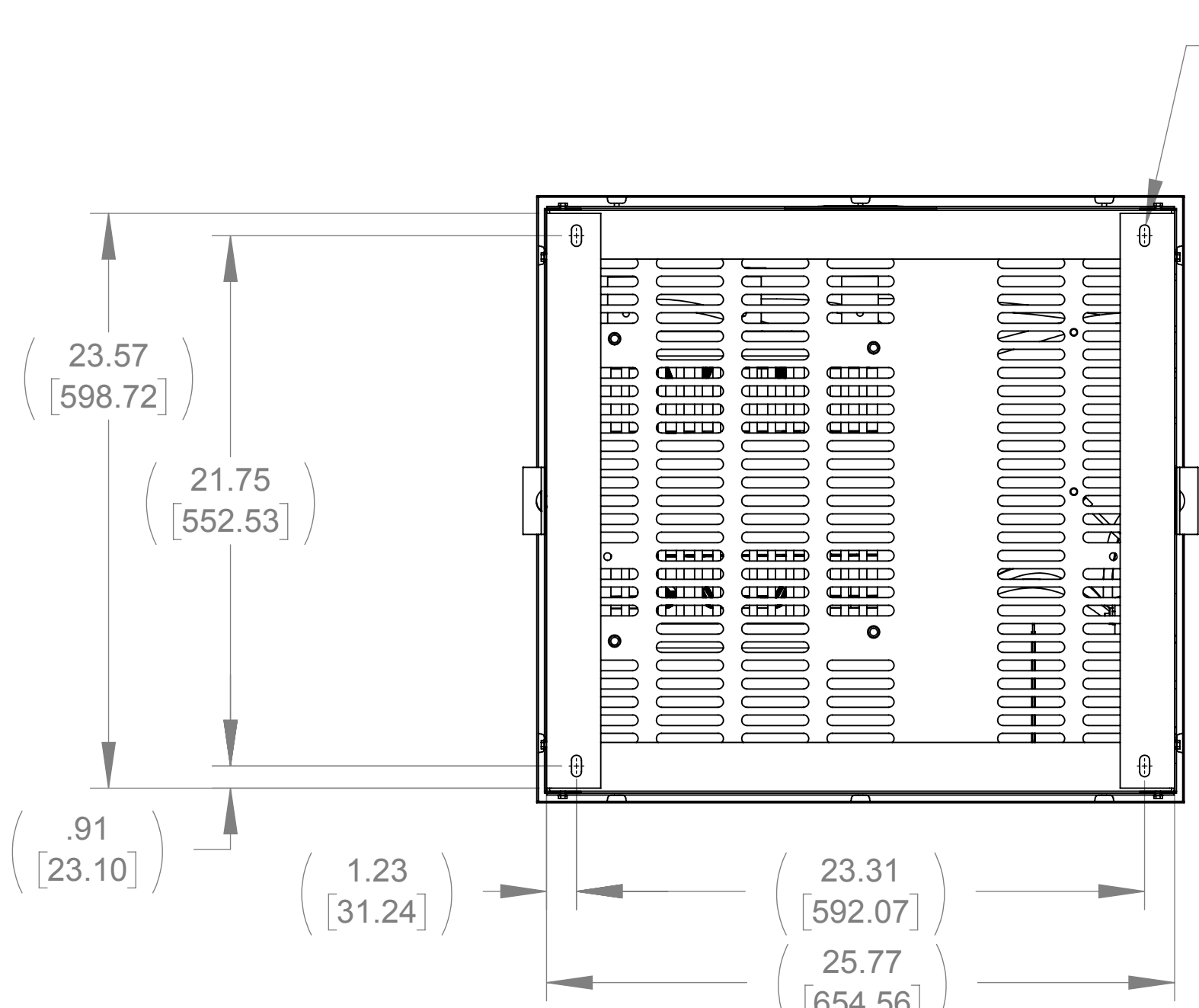
A



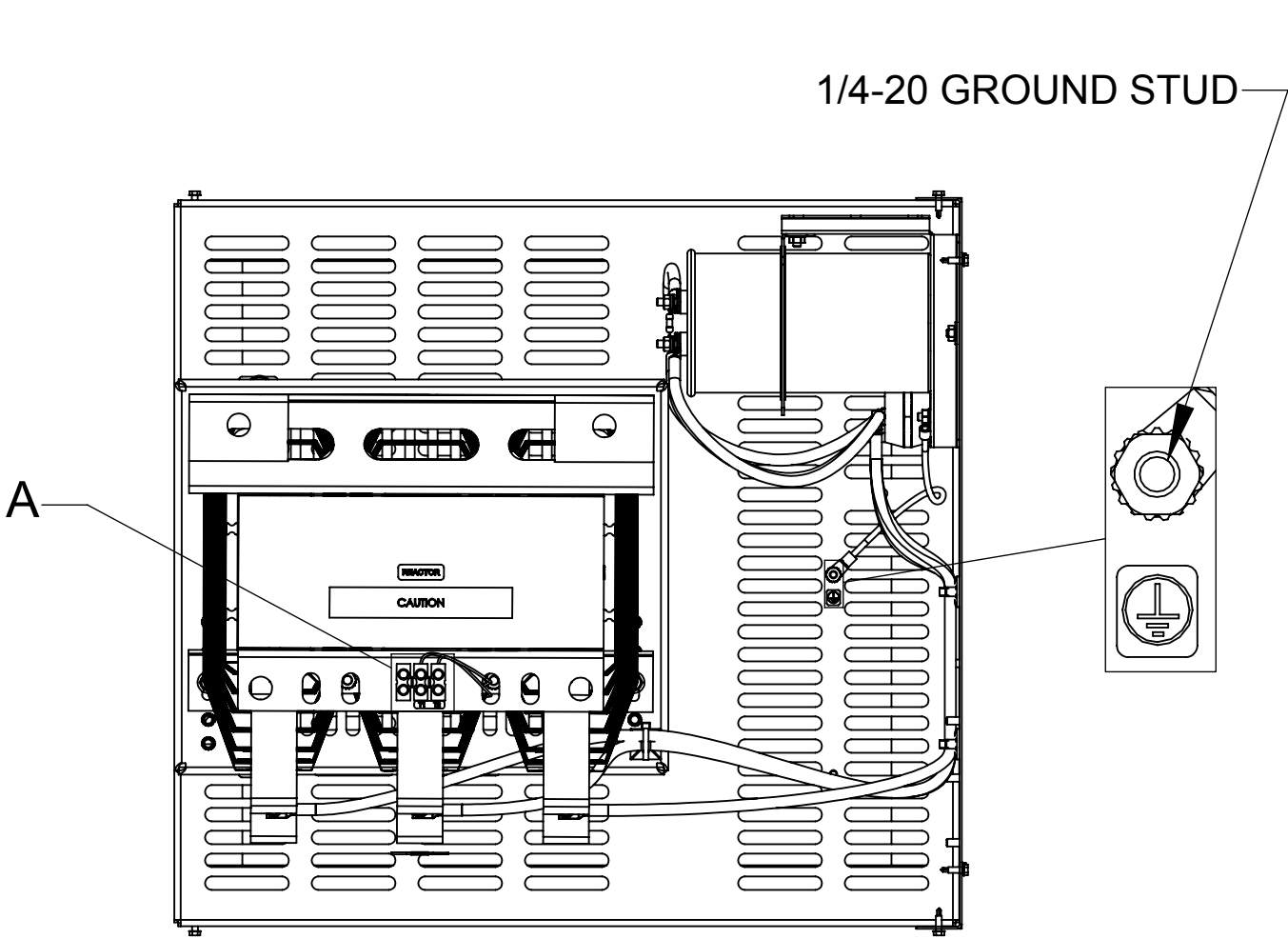
FRONT VIEW  
(PANELS REMOVED)



SIDE VIEW

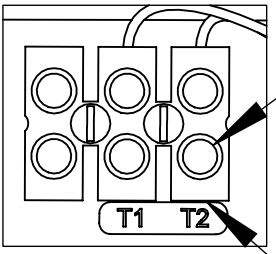


BOTTOM VIEW



TOP VIEW  
(PANELS REMOVED)

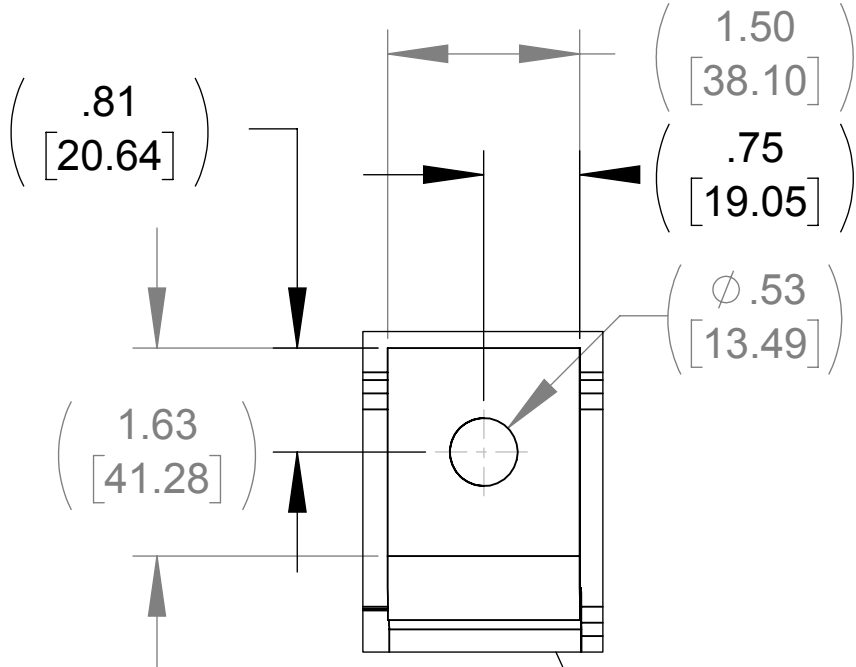
(1.50 [38.10] X 4.50 [114.30])  
SLOT, 2 PLACES



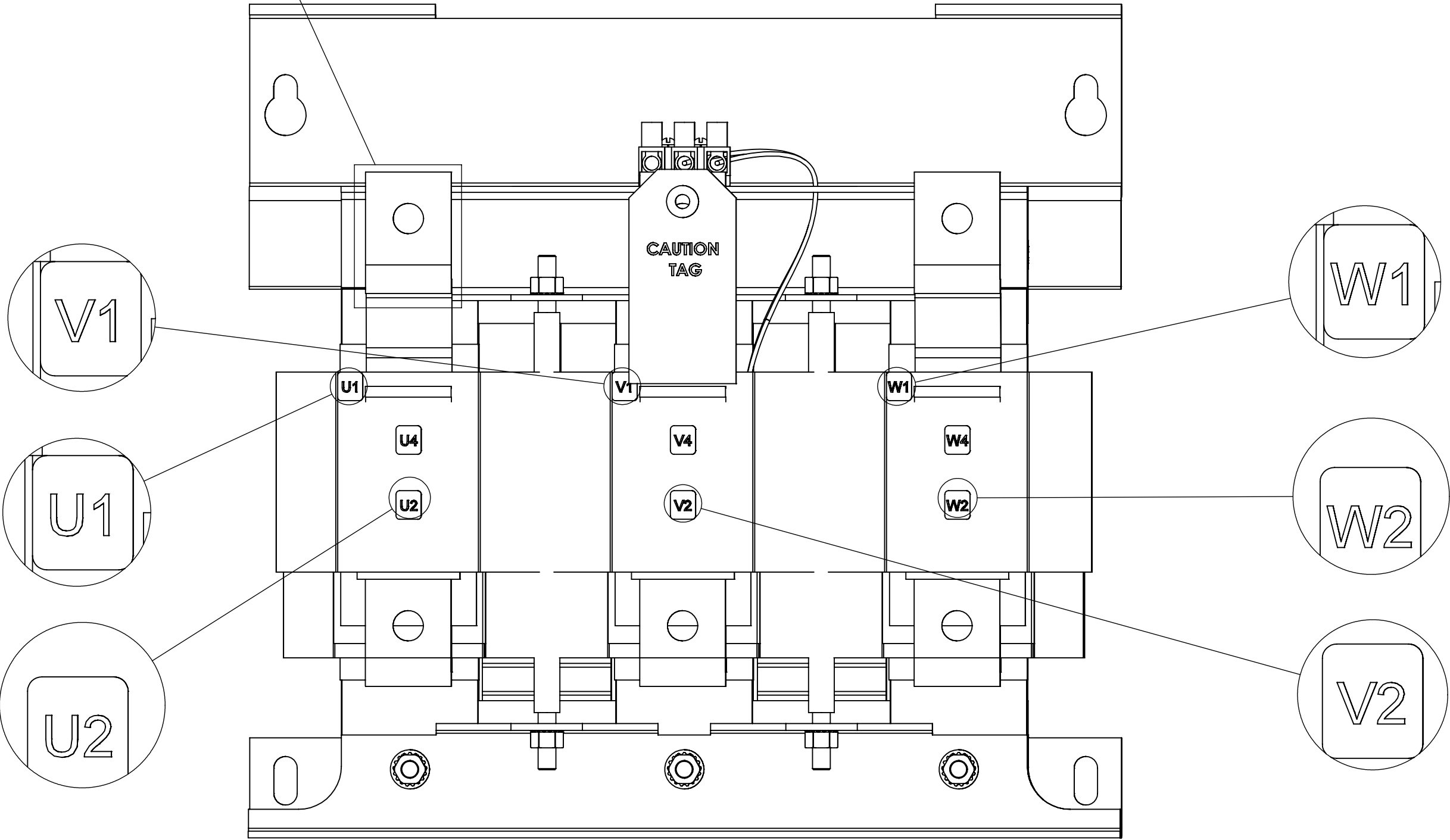
SEE NOTE 1

SEE NOTE 2

DETAIL A  
CUSTOMER CONNECTION  
DETAIL VIEW (THERMAL)



LUG VIEW  
(6 PLACES)



CUSTOMER CONNECTION  
DETAIL VIEW

NOTES:

1. TIGHTEN TERMINAL BLOCK SCREWS TO 16 IN/LBS. TORQUE.
2. TERMINAL WIRE SIZE: 4-14 AWG.

THE COMPONENT, PART OR ASSEMBLY DESCRIBED IN THIS DOCUMENT MUST COMPLY WITH THE EU (EUROPEAN UNION) DIRECTIVE RoHS2		MATERIAL		CONFIDENTIAL AND PROPRIETARY INFORMATION THIS DOCUMENT CONTAINS CONFIDENTIAL AND PROPRIETARY INFORMATION OF MTE CORPORATION AND MAY NOT BE USED, COPIED OR DISCLOSED TO OTHERS EXCEPT WITH THE AUTHORIZED WRITTEN PERMISSION OF MTE CORPORATION		
CONTAINS <0.1% OF ANY SVHC BY WEIGHT PER REACH REGULATION				DESCRIPTION		
UNLESS OTHERWISE SPECIFIED DIMENSIONS ARE IN INCHES [MM] TOLERANCES ARE:  ANGLES: ± 1 °  1 PLACE .X: ± .1 [2.5]  2 PLACE .XX: ± .03 [0.76]  3 PLACE .XXX: ± .010 [0.254]		<b>MTE</b> POWER QUALITY. SOLVED.  N83 W13330 Leon Road Menomonee Falls, WI 53051 USA 800.455.4683 262.253.8200		SWG 200A 550-600V 2-8kHz FILTER, NEMA 1/2 ENCL		
		DRAWN CR 06/13/18		DATE 06/13/18		
		CHECKED MN 06/28/18		DATE 06/28/18		
		APPROVED TL 10/10/18		DATE 10/10/18		
		SCALE 1:6		REV 00		
				SHEET 1 OF 1		