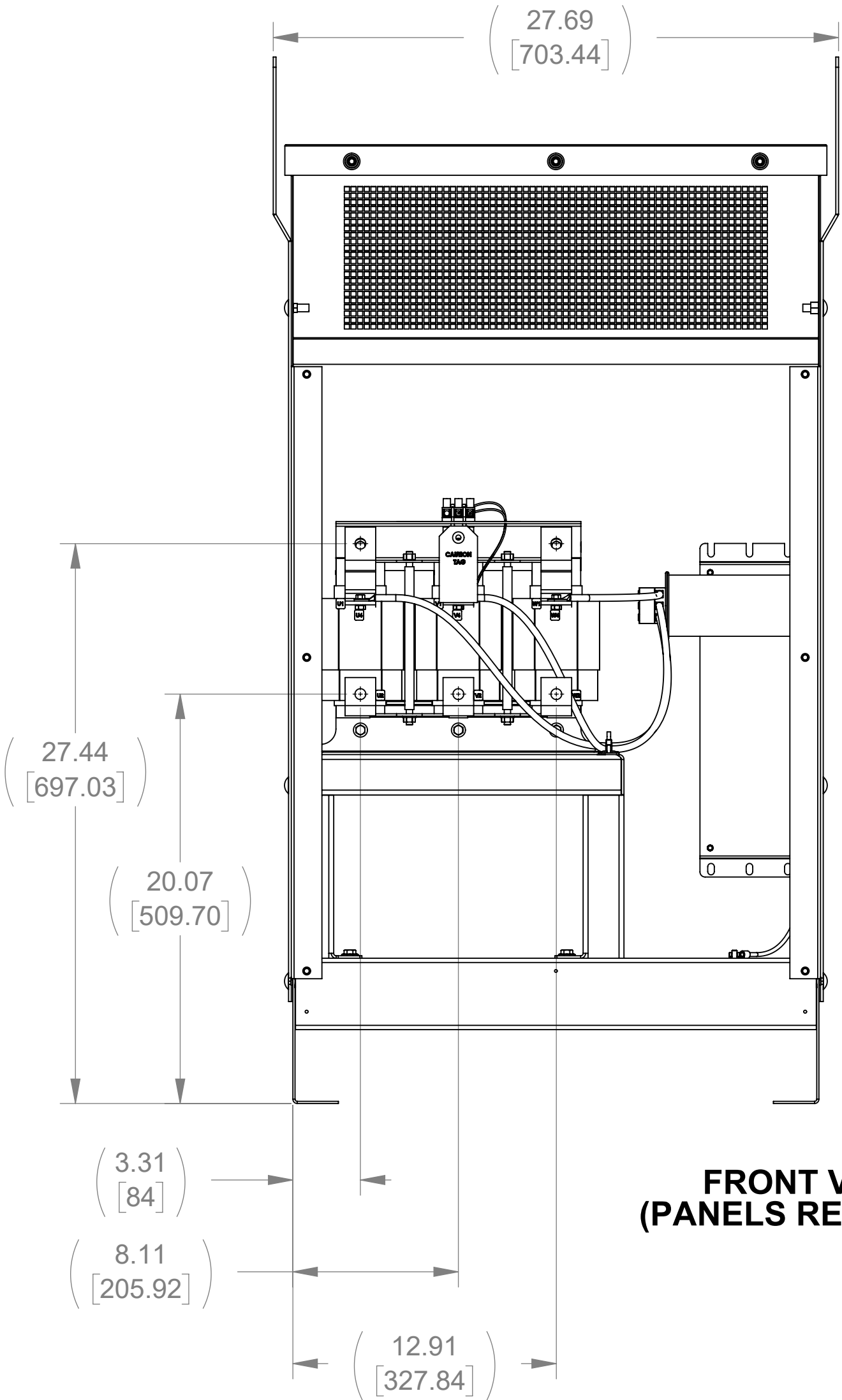


APPROX. WEIGHT
(LBS)
367

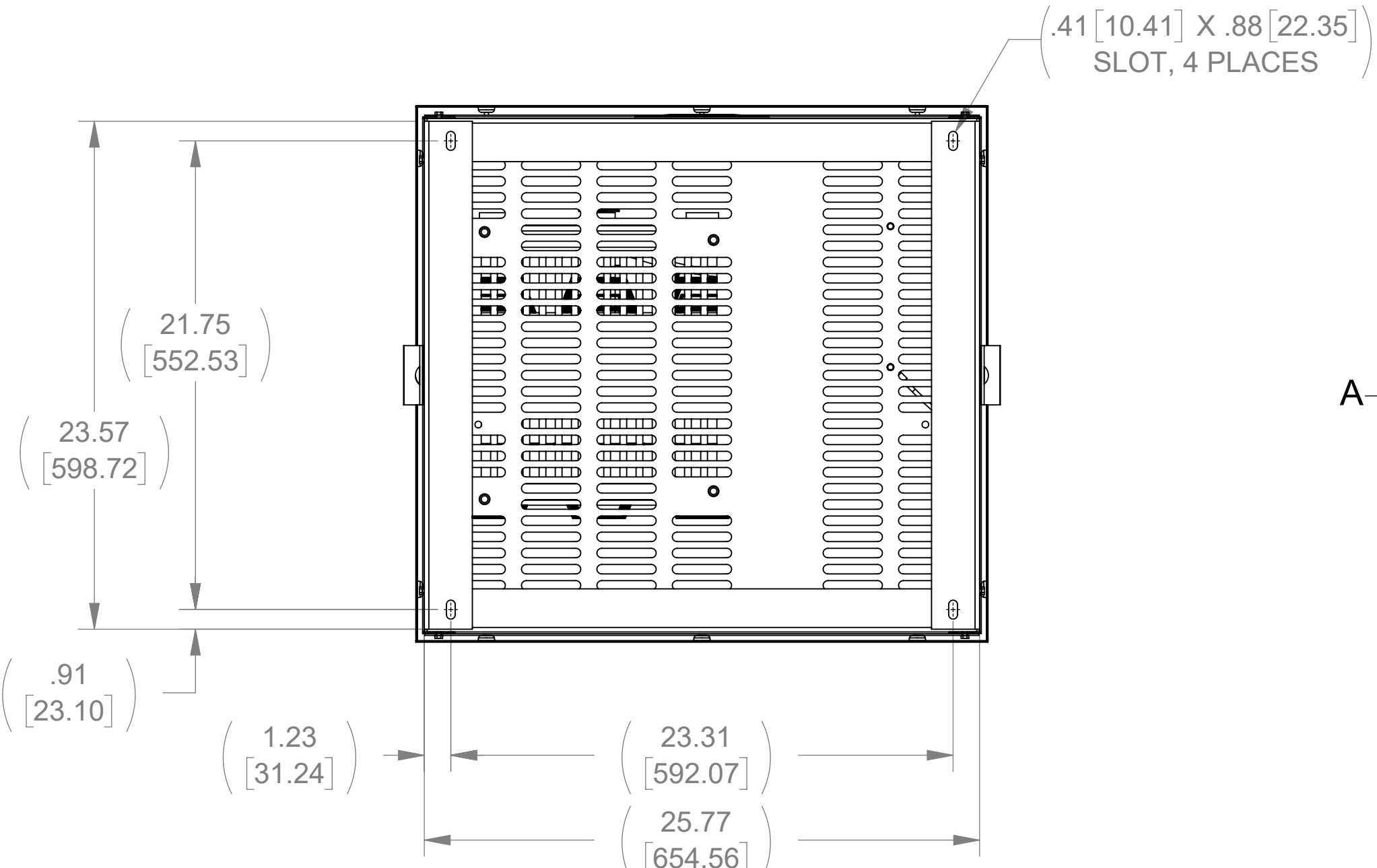
ECO No	DESCRIPTION	REV BY	DATE
M11344	REMOVED FIELD LUGS AND ASSOCIATED HARDWARE	JD	10/09/18



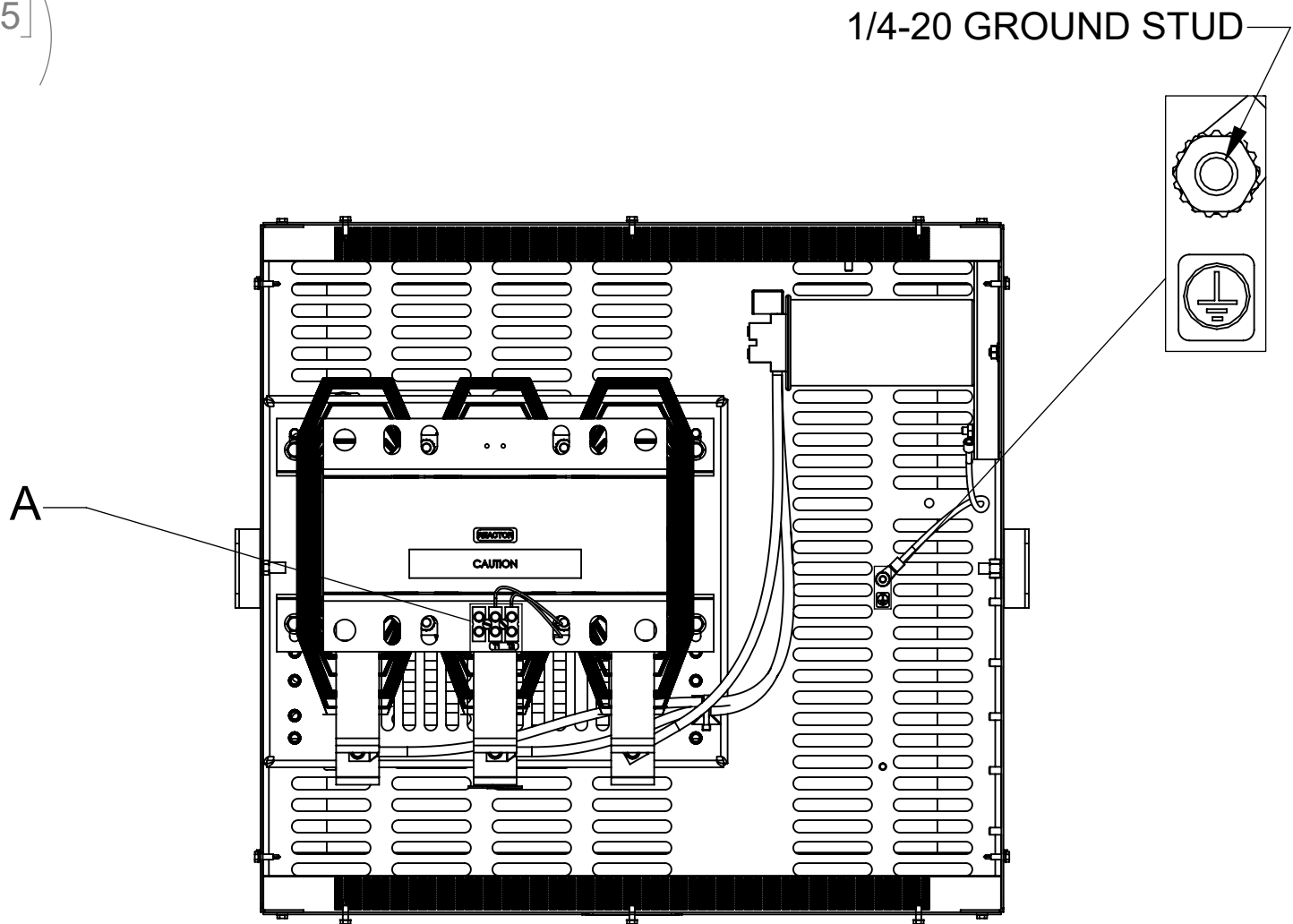
FRONT VIEW
(PANELS REMOVED)



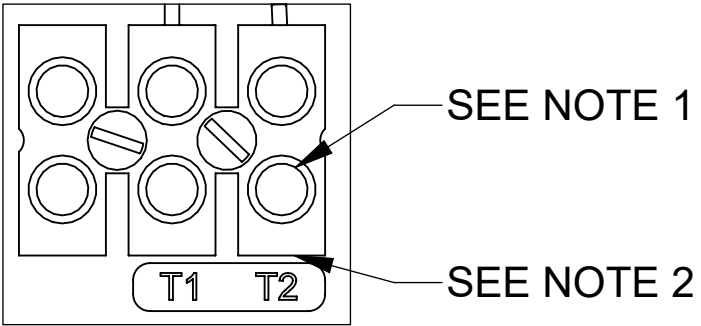
SIDE VIEW



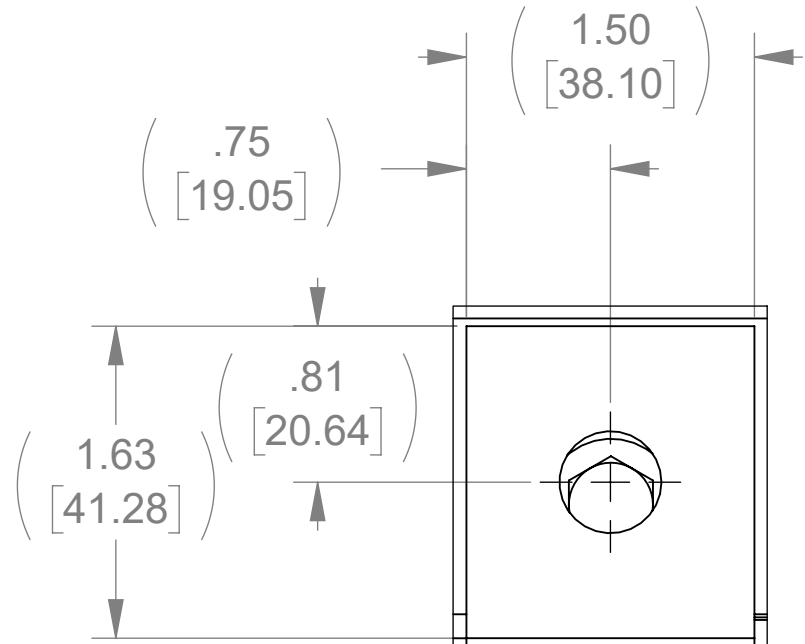
BOTTOM VIEW



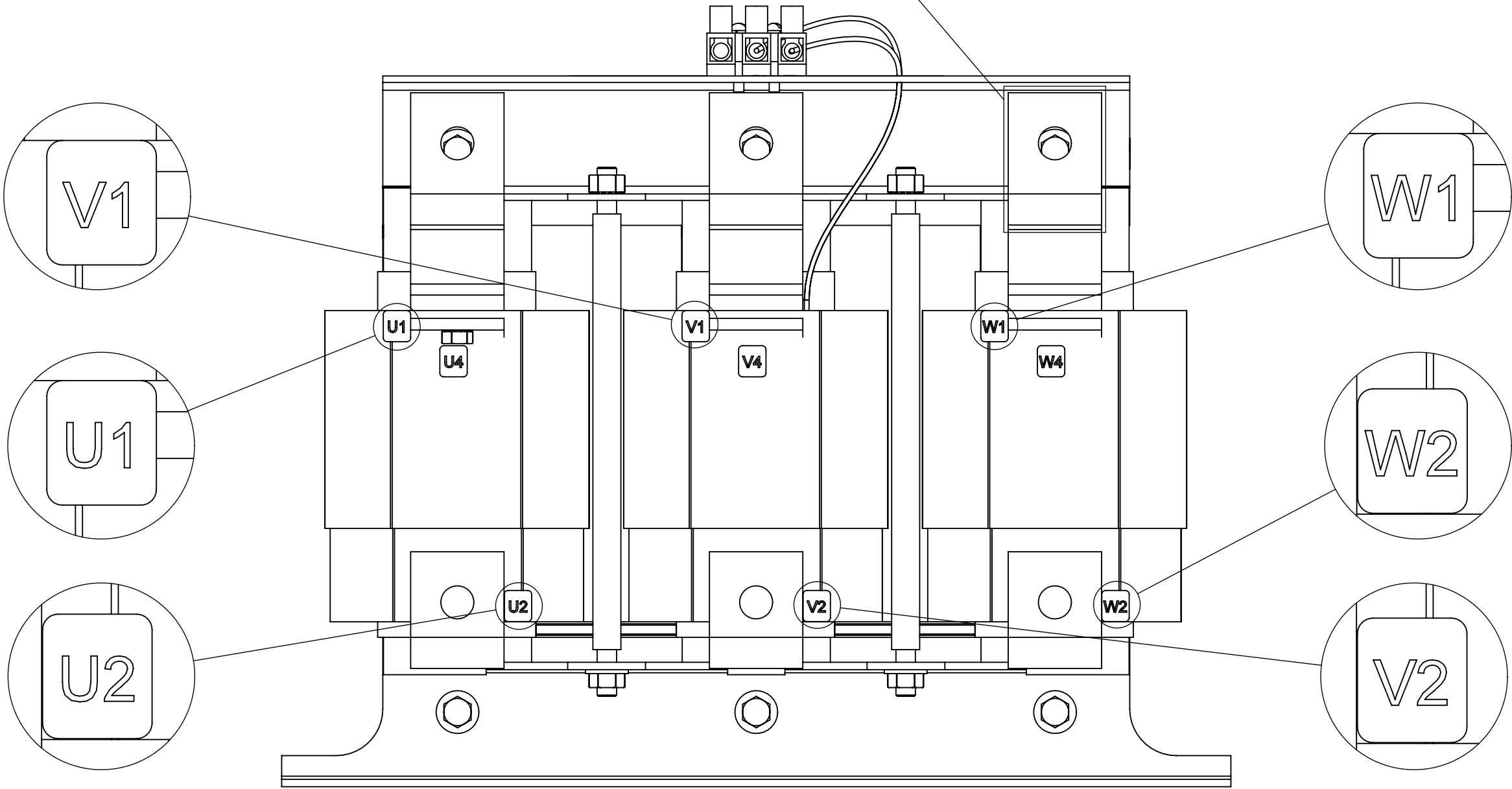
TOP VIEW
(PANELS REMOVED)



DETAIL A
CUSTOMER CONNECTION
DETAIL VIEW (THERMAL)



LUG VIEW
(6 PLACES)



CUSTOMER CONNECTION
DETAIL VIEW

NOTES:

- TIGHTEN TERMINAL BLOCK SCREWS TO 16 IN/LBS. TORQUE.
- TERMINAL WIRE SIZE: 4-14 AWG.

THE COMPONENT, PART OR ASSEMBLY DESCRIBED IN THIS DOCUMENT MUST COMPLY WITH THE EU(EUROPEAN UNION) DIRECTIVE RoHS2		MATERIAL		CONFIDENTIAL AND PROPRIETARY INFORMATION THIS DOCUMENT CONTAINS CONFIDENTIAL AND PROPRIETARY INFORMATION OF MTE CORPORATION AND MAY NOT BE USED, COPIED OR DISCLOSED TO OTHERS EXCEPT WITH THE AUTHORIZED WRITTEN PERMISSION OF MTE CORPORATION		
CONTAINS <0.1% OF ANY SVHC BY WEIGHT PER REACH REGULATION				DESCRIPTION		
UNLESS OTHERWISE SPECIFIED DIMENSIONS ARE IN INCHES [MM] TOLERANCES ARE: ANGLES: ± 1 ° 1 PLACE .X: ± .1 [2.5] 2 PLACE .XX: ± .01 [0.25] 3 PLACE .XXX: ± .005 [0.127]		DRAWN JT 07/19/18		SWG 160A 600V 2-8 kHz FILTER, NEMA 1/2 ENCL.		
		CHECKED JD 10/09/18		DATE 10/09/18		
		APPROVED TL 10/09/18		DATE 10/09/18		
				REV 02		
				SCALE 1:6		
				SHEET 1 OF 1		