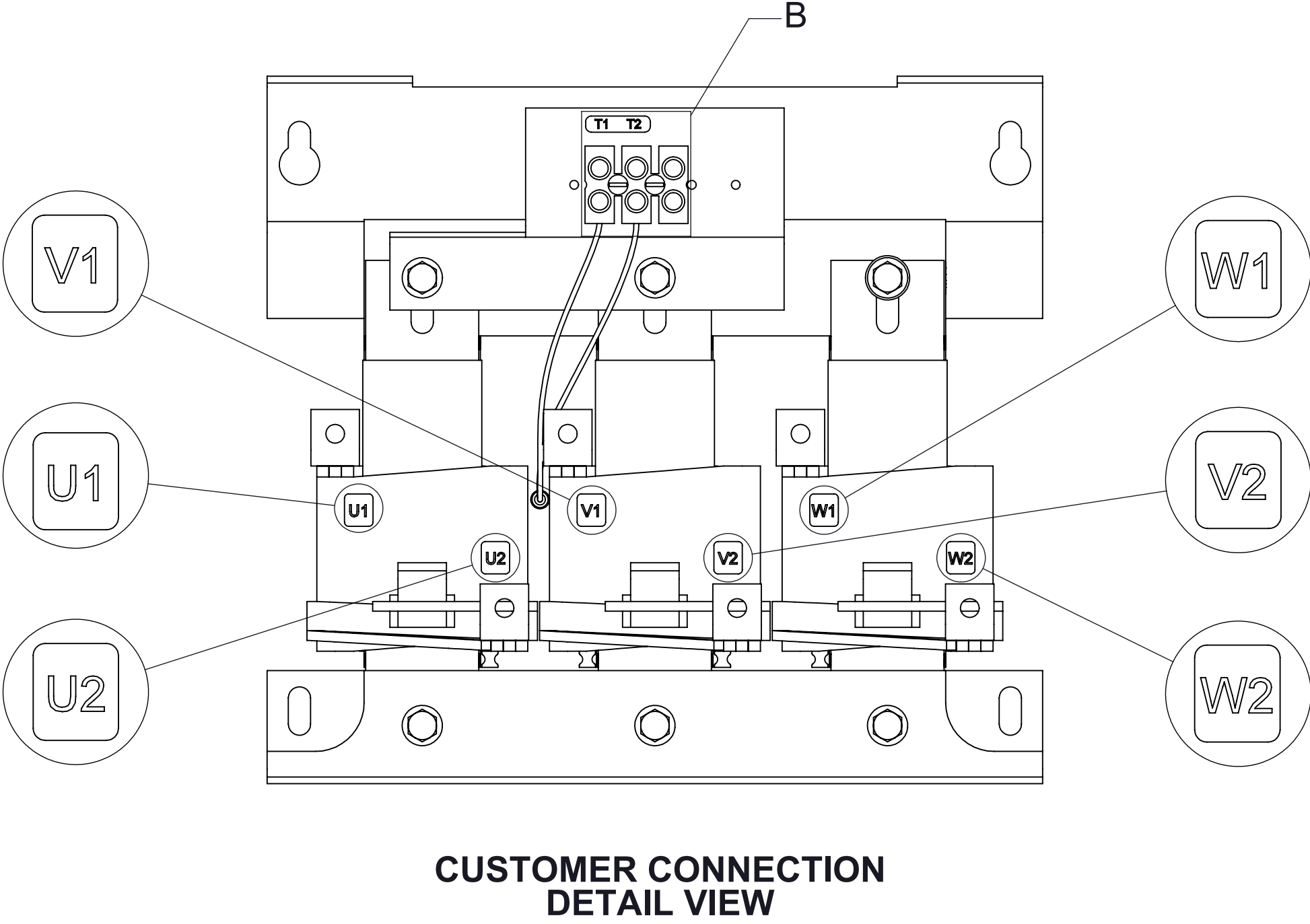
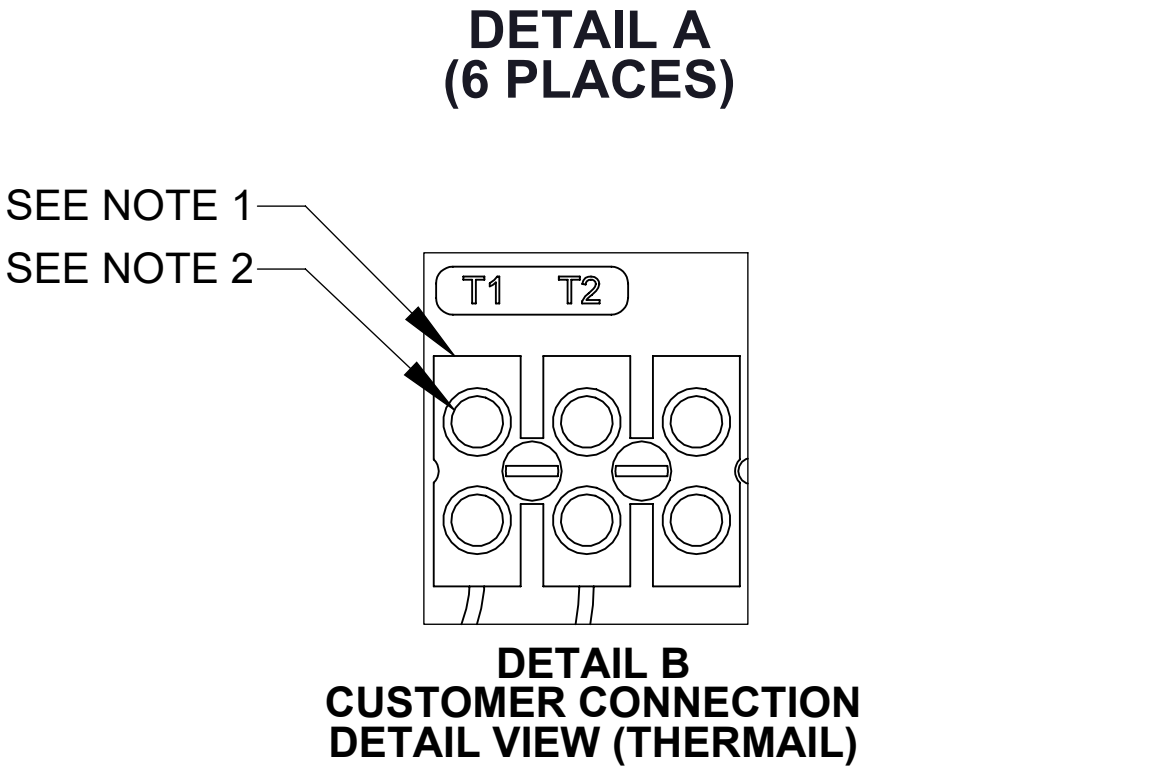



ECO No	DESCRIPTION	REV BY	DATE
M12156	ADDED SHUNT LABEL	KV	12/09/19



- NOTES:**
1. **TERMINAL WIRE RANGE: 4-14 AWG.**
 2. **TERMINAL SCREW TIGHTENING TORQUE: 16 IN/LBS.**
 3. **REFER TO USER MANUAL FOR COMPLETE INSTALLATION INSTRUCTIONS.**

THE COMPONENT, PART OR ASSEMBLY DESCRIBED IN THIS DOCUMENT MUST COMPLY WITH THE EU(EUROPEAN UNION) DIRECTIVE RoHS2		MATERIAL		CONFIDENTIAL AND PROPRIETARY INFORMATION THIS DOCUMENT CONTAINS CONFIDENTIAL AND PROPRIETARY INFORMATION OF MTE CORPORATION AND MAY NOT BE USED, COPIED OR DISCLOSED TO OTHERS EXCEPT WITH THE AUTHORIZED WRITTEN PERMISSION OF MTE CORPORATION			
CONTAINS <0.1% OF ANY SVHC BY WEIGHT PER REACH REGULATION				DESCRIPTION			
<div>UNLESS OTHERWISE SPECIFIED DIMENSIONS ARE IN INCHES [MM] TOLERANCES ARE:</div> <div>ANGLES: ± 1 °</div> <div>1 PLACE .X: ± .1 [2.5]</div> <div>2 PLACE .XX: ± .03 [0.76]</div> <div>3 PLACE .XXX: ± .010 [0.254]</div> <div></div> <div>N83 W13330 Leon Road Menomonee Falls, WI 53051 USA 800.455-4683 262.253-8200</div>		DRAWN	DATE	SWG 135A 208-240V 2-8kHz FILTER, NEMA 1/2 ENCL			
		JD	07/29/19				
		CHECKED	DATE				
		KV	12/09/19				
		APPROVED	DATE	SIZE	DWG No.	REV	
		PY	12/09/19	D	CD SWGG0135A	01	
				SCALE	1:4	SHEET 1 OF 1	