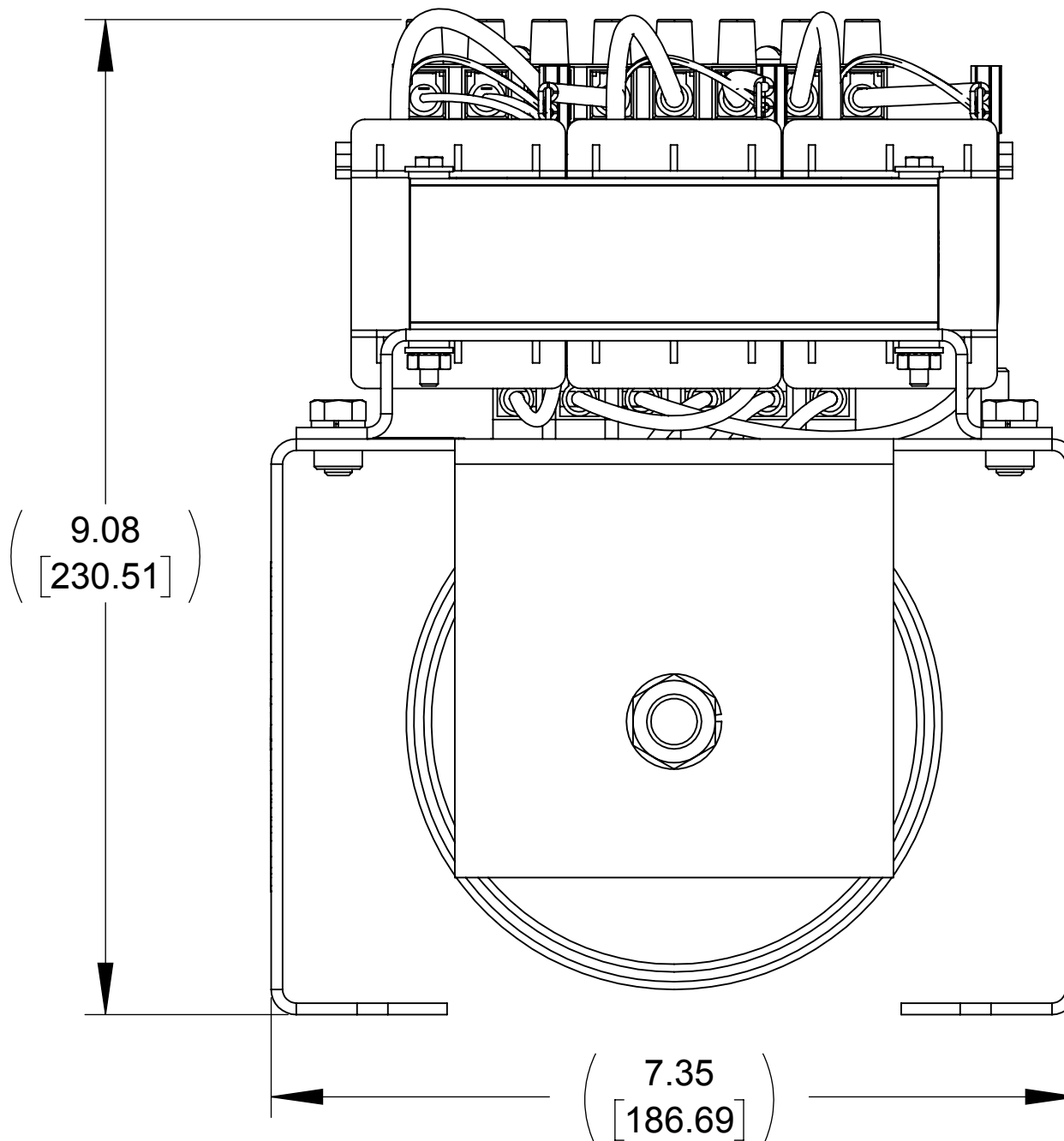
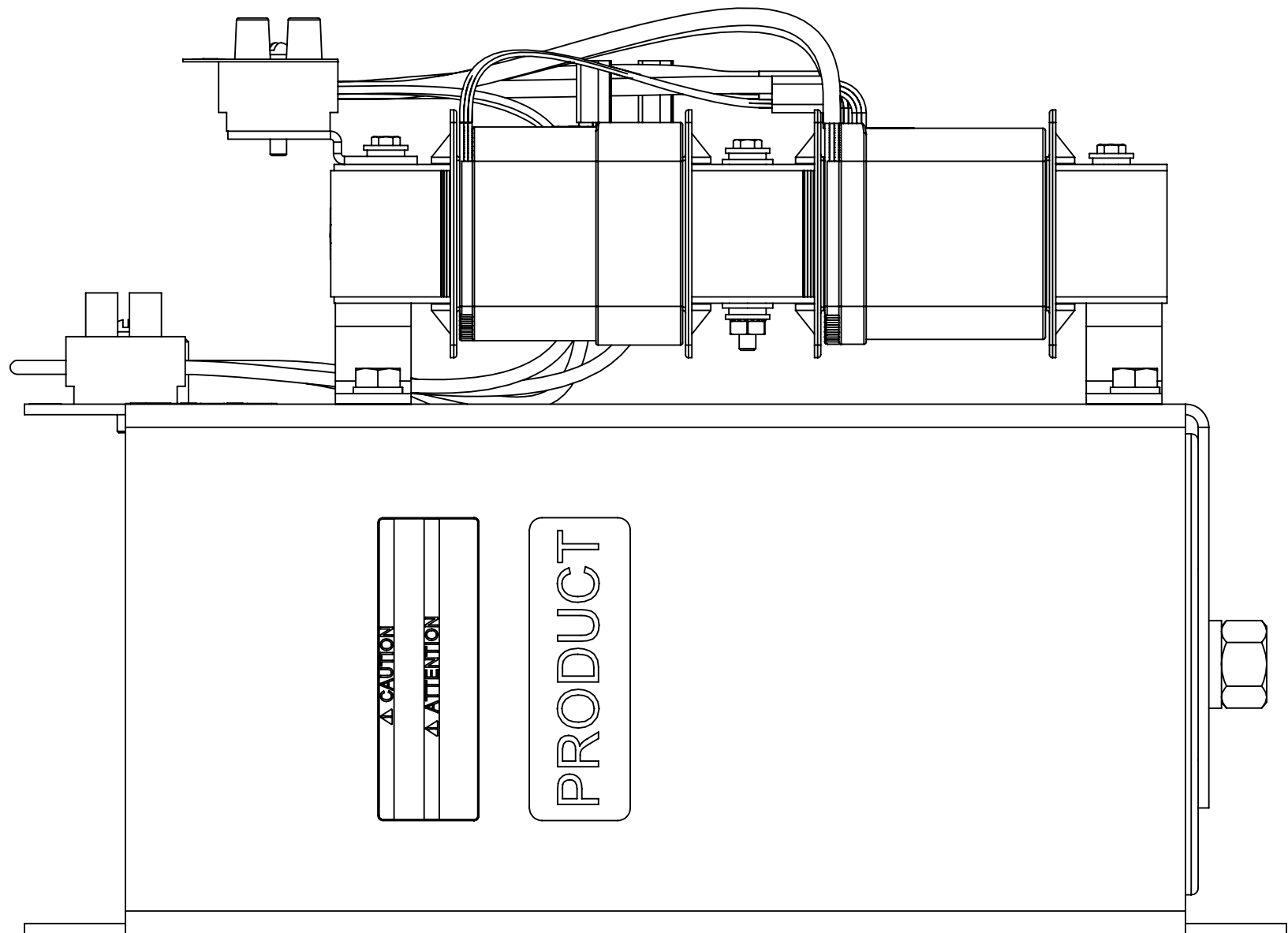
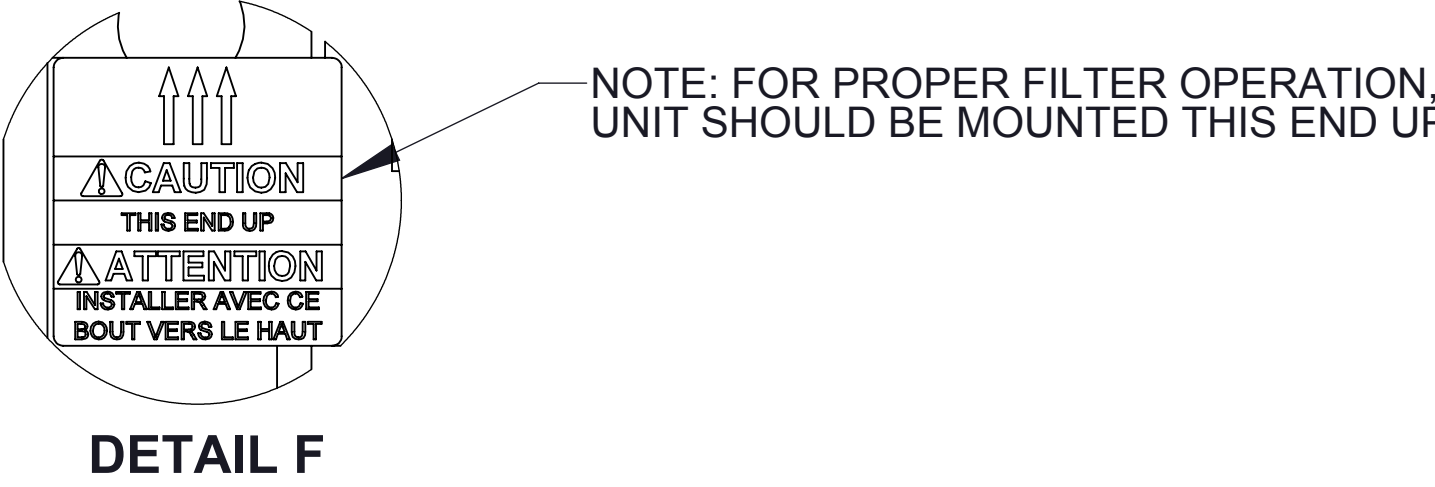
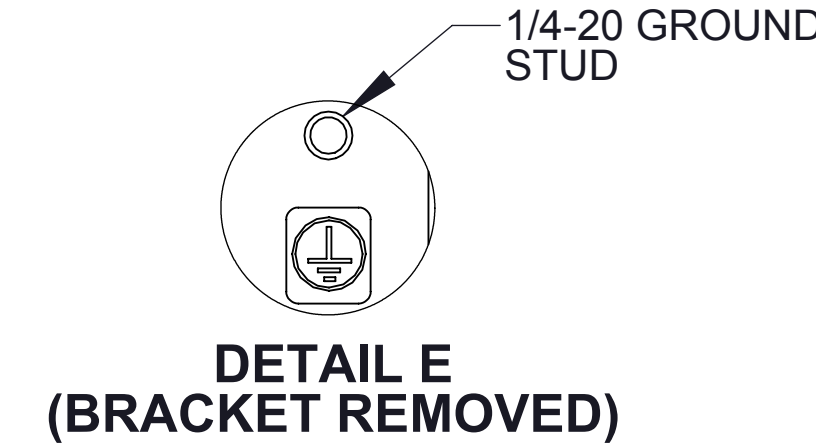
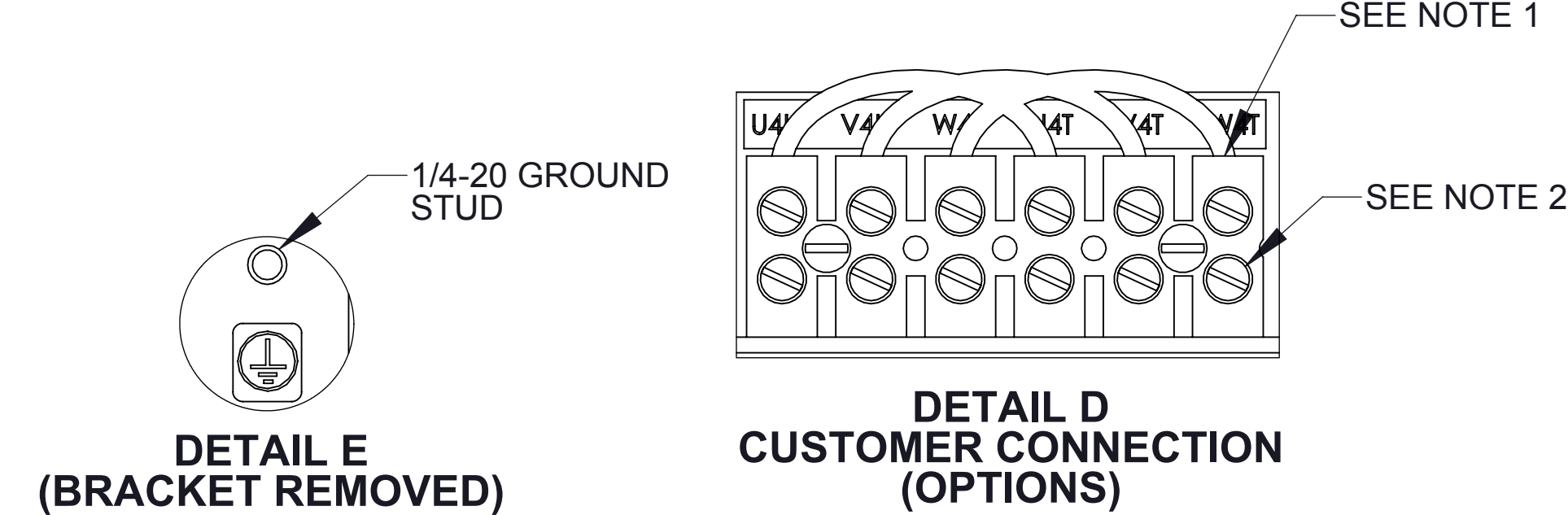
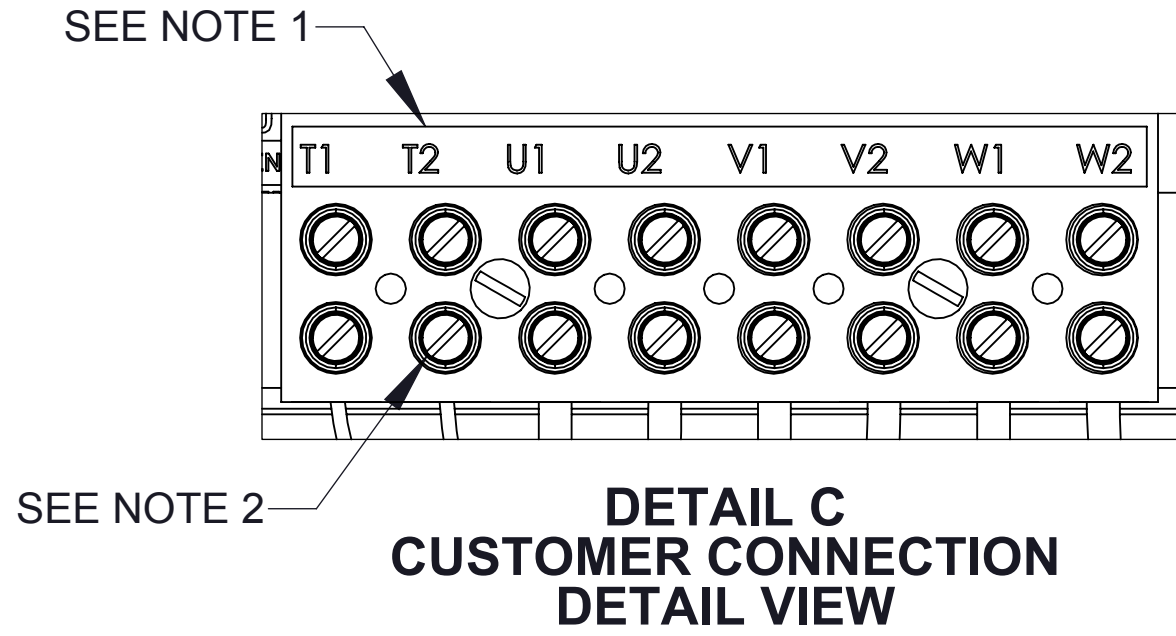
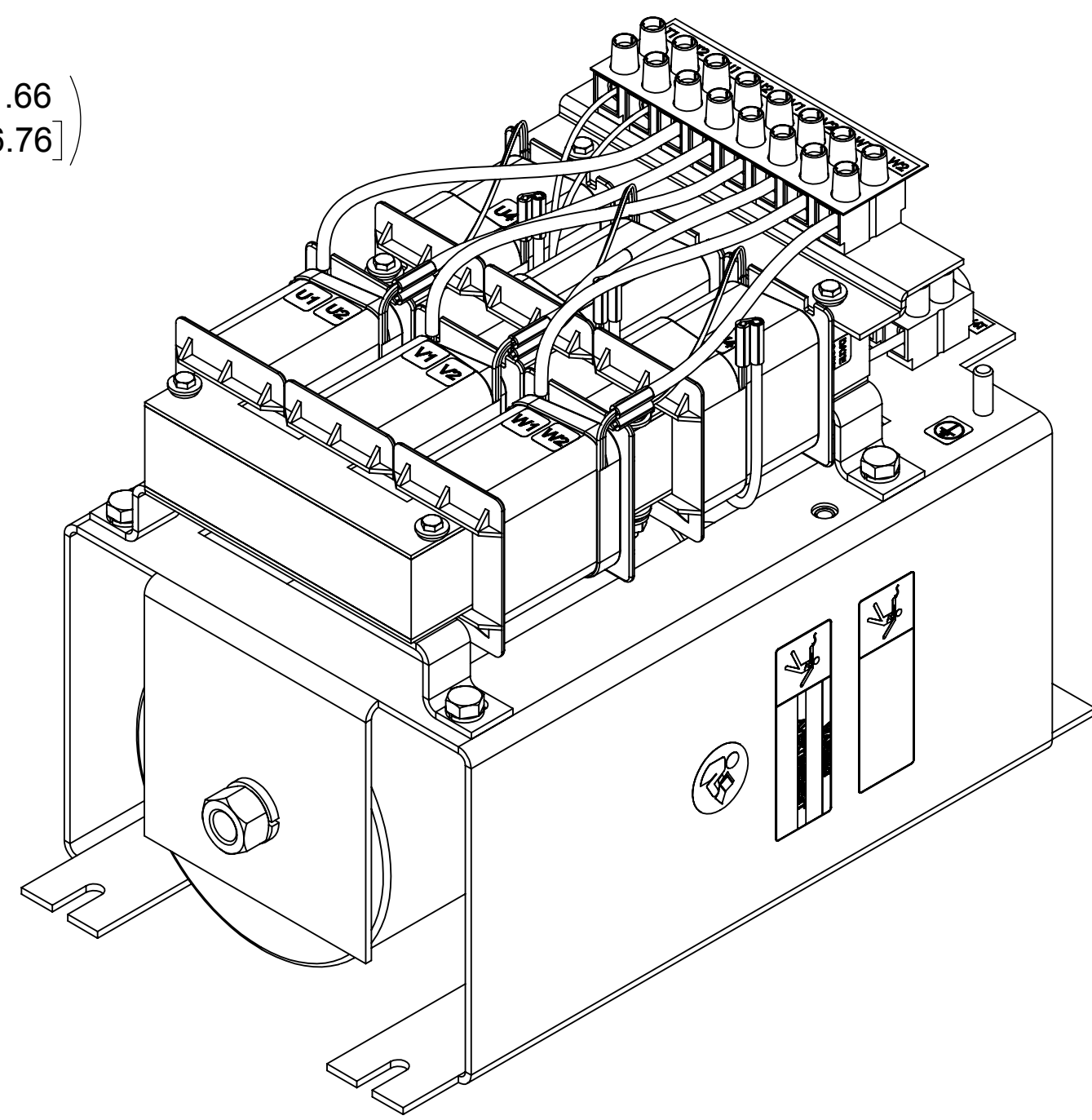
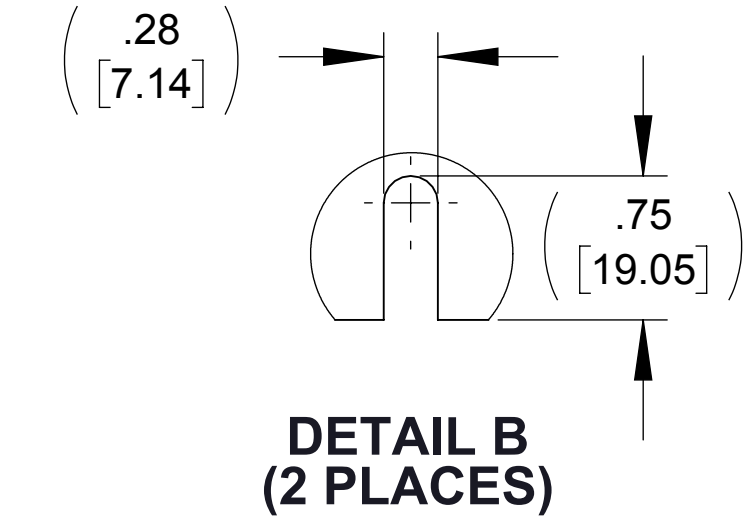
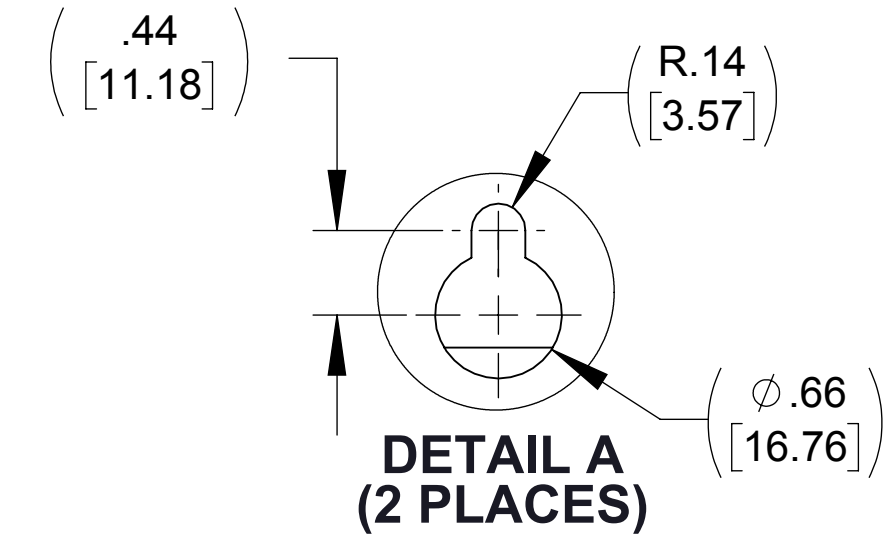
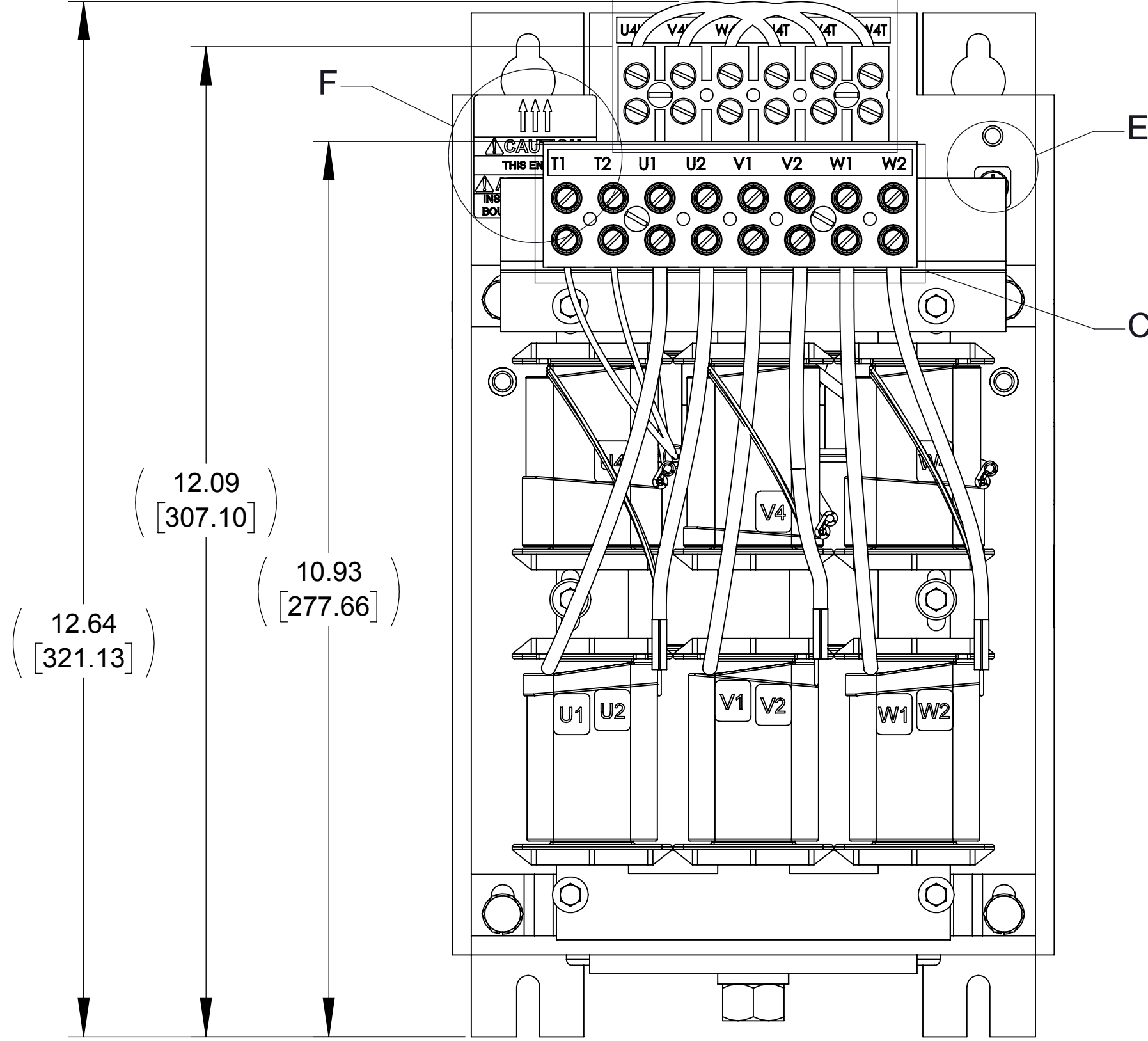
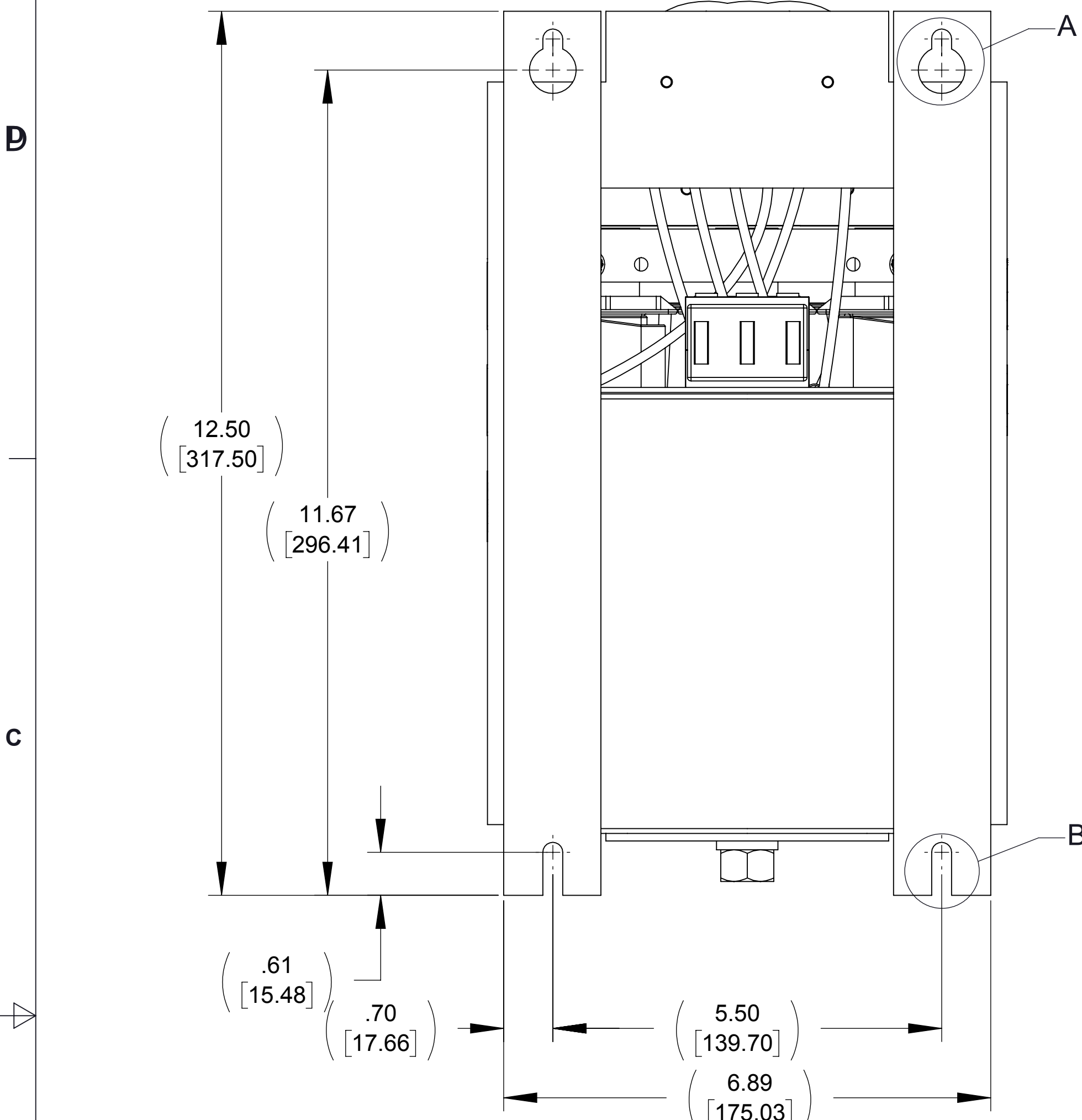


APPROX. WEIGHT (LBS)
32

ECO No	DESCRIPTION	REV BY	DATE



- NOTES:**
1. WIRE RANGE: 4-14 AWG.
 2. TERMINAL SCREW TIGHTENING TORQUE: 16 INLBS.

THE COMPONENT, PART OR ASSEMBLY DESCRIBED IN THIS DOCUMENT MUST COMPLY WITH THE EU (EUROPEAN UNION) DIRECTIVE RoHS2		MATERIAL		CONFIDENTIAL AND PROPRIETARY INFORMATION THIS DOCUMENT CONTAINS CONFIDENTIAL AND PROPRIETARY INFORMATION OF MTE CORPORATION AND MAY NOT BE USED, COPIED OR DISCLOSED TO OTHERS EXCEPT WITH THE AUTHORIZED WRITTEN PERMISSION OF MTE CORPORATION	
CONTAINS <0.1% OF ANY SVHC BY WEIGHT PER REACH REGULATION				DESCRIPTION	
UNLESS OTHERWISE SPECIFIED DIMENSIONS ARE IN INCHES [MM] TOLERANCES ARE:		DRAWN MN		DATE 06/13/14	
ANGLES: ± 1 °		CHECKED TL		DATE 06/17/14	
1 PLACE .XX: ± .1 [2.5]		APPROVED TL		DATE 09/09/14	
2 PLACE .XX: ± .03 [0.76]				SIZE D	
3 PLACE .XXX: ± .010 [0.254]				DWG No. CD MXP0011C	
				REV 00	
				SCALE 2:3	
				SHEET 1 OF 1	



N83 W13330 Leon Road
Menomonee Falls, WI 53051 USA
800.455-4683
262.253-8200