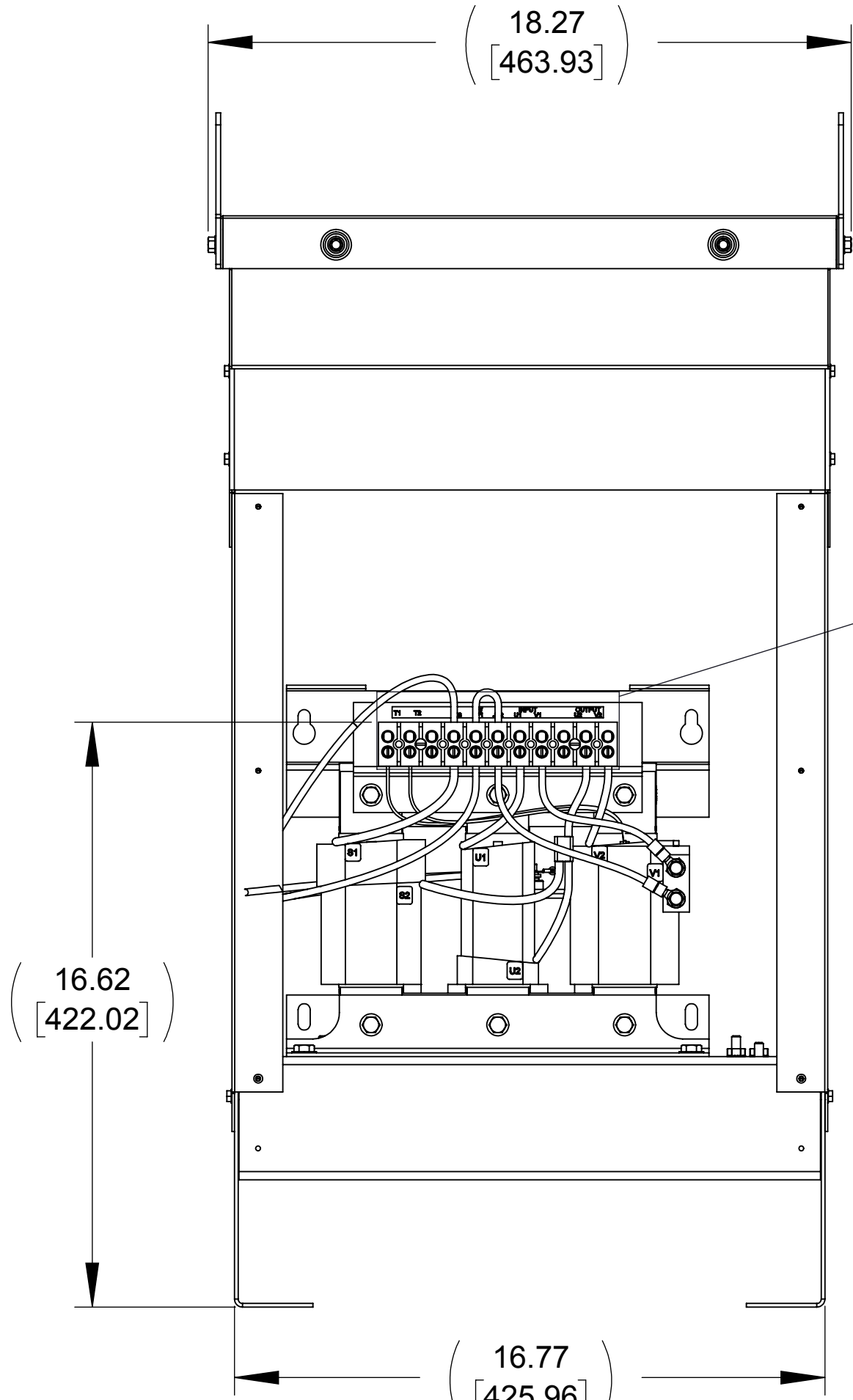
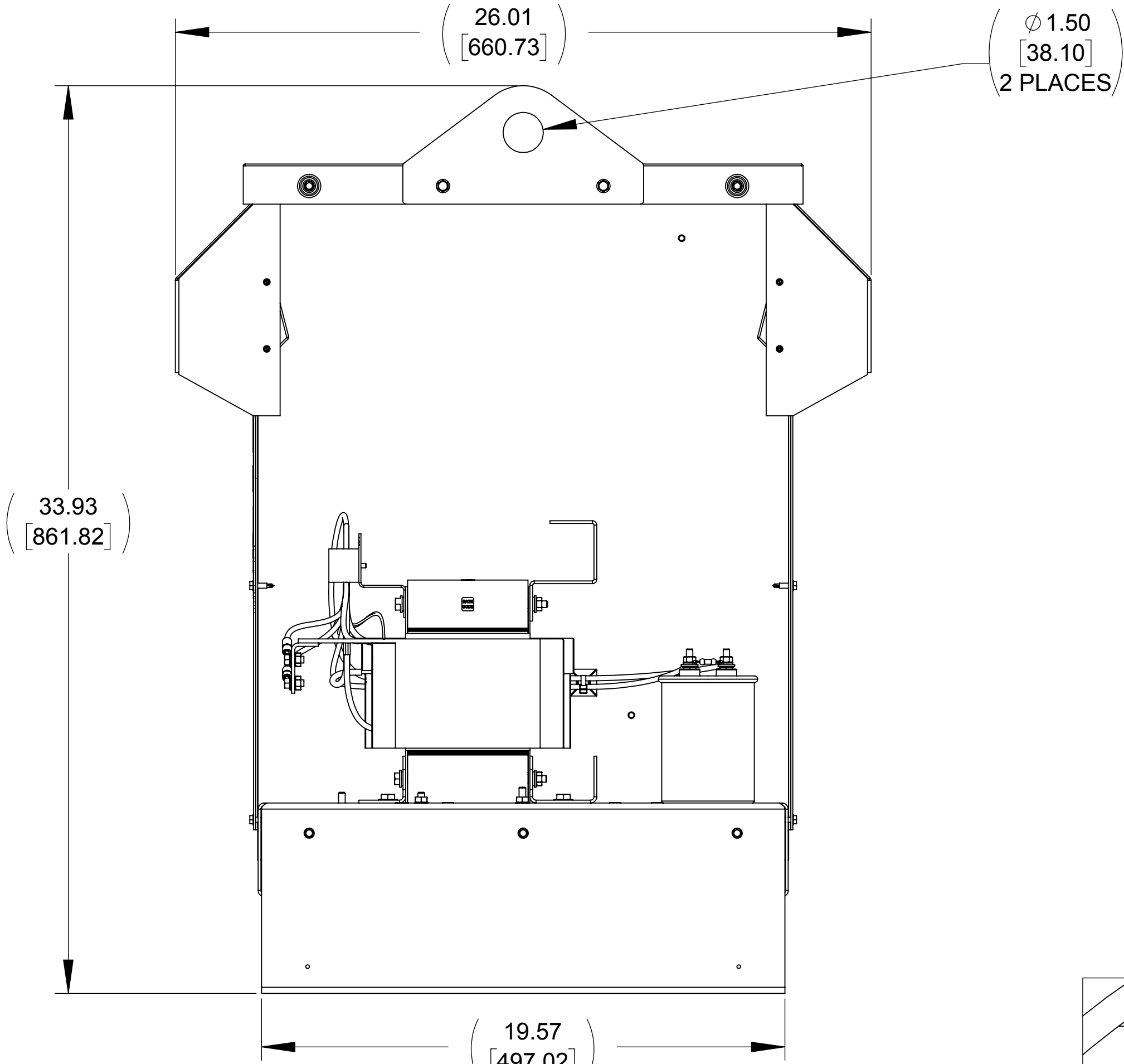


APPROX. WEIGHT (LBS)
192

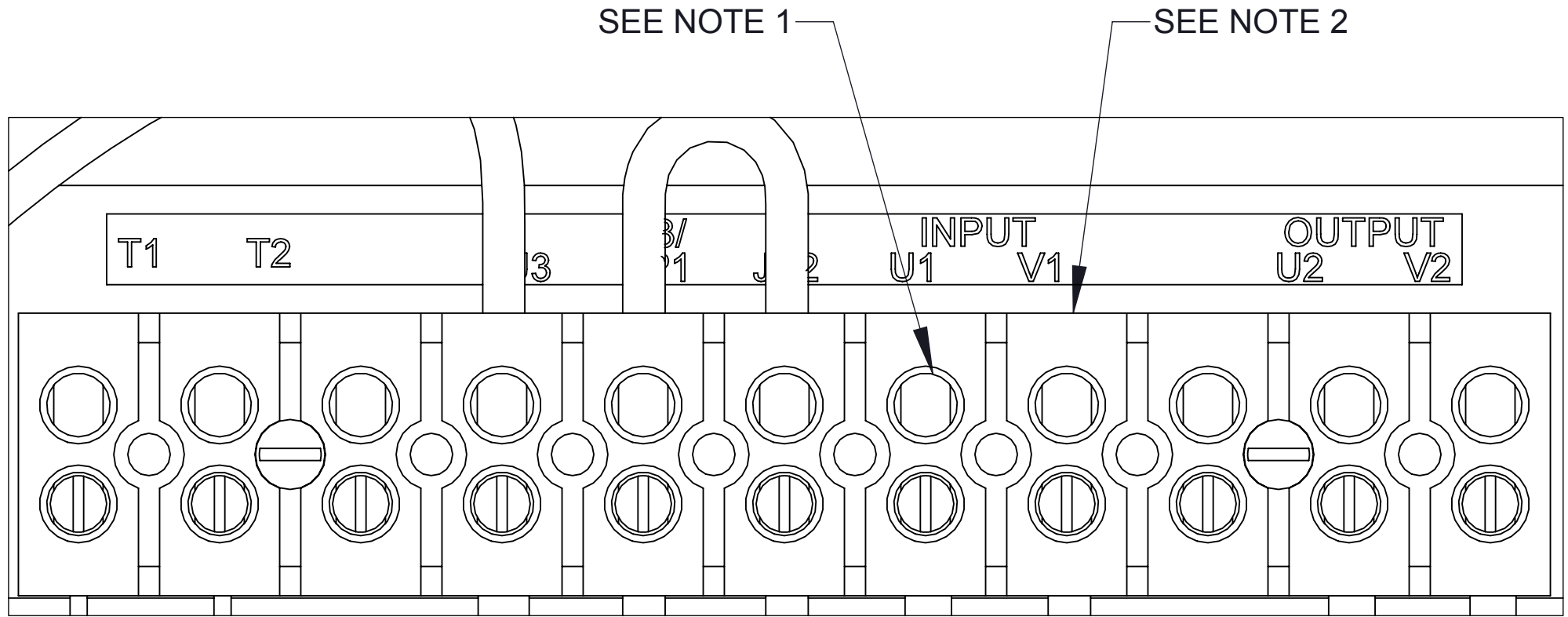
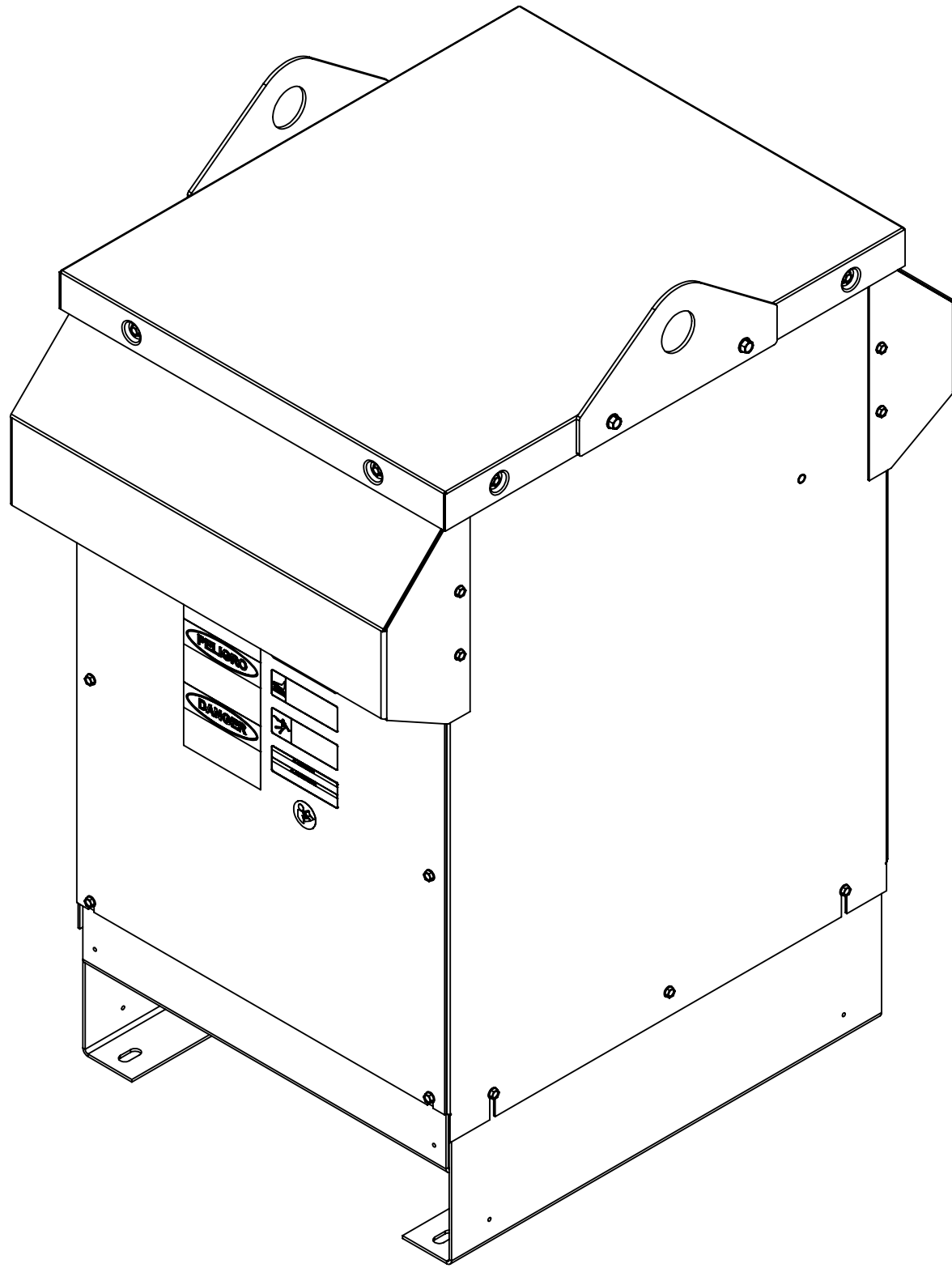
ECO No	DESCRIPTION	REV BY	DATE
M9806	REPLACED CAPANEL-014 WITH CAP-323HIC	MN	05/31/16



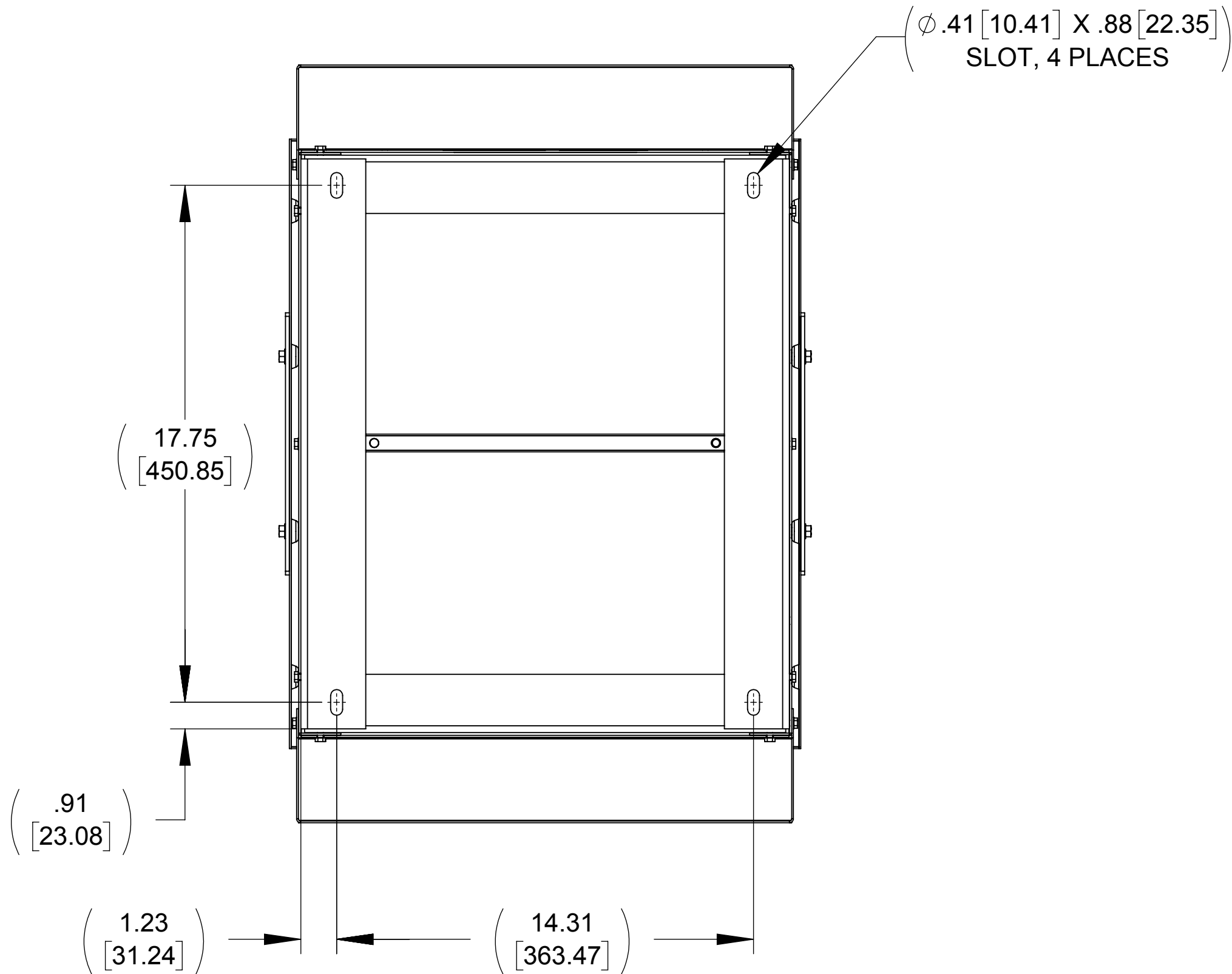
FRONT VIEW
(PANELS REMOVED)



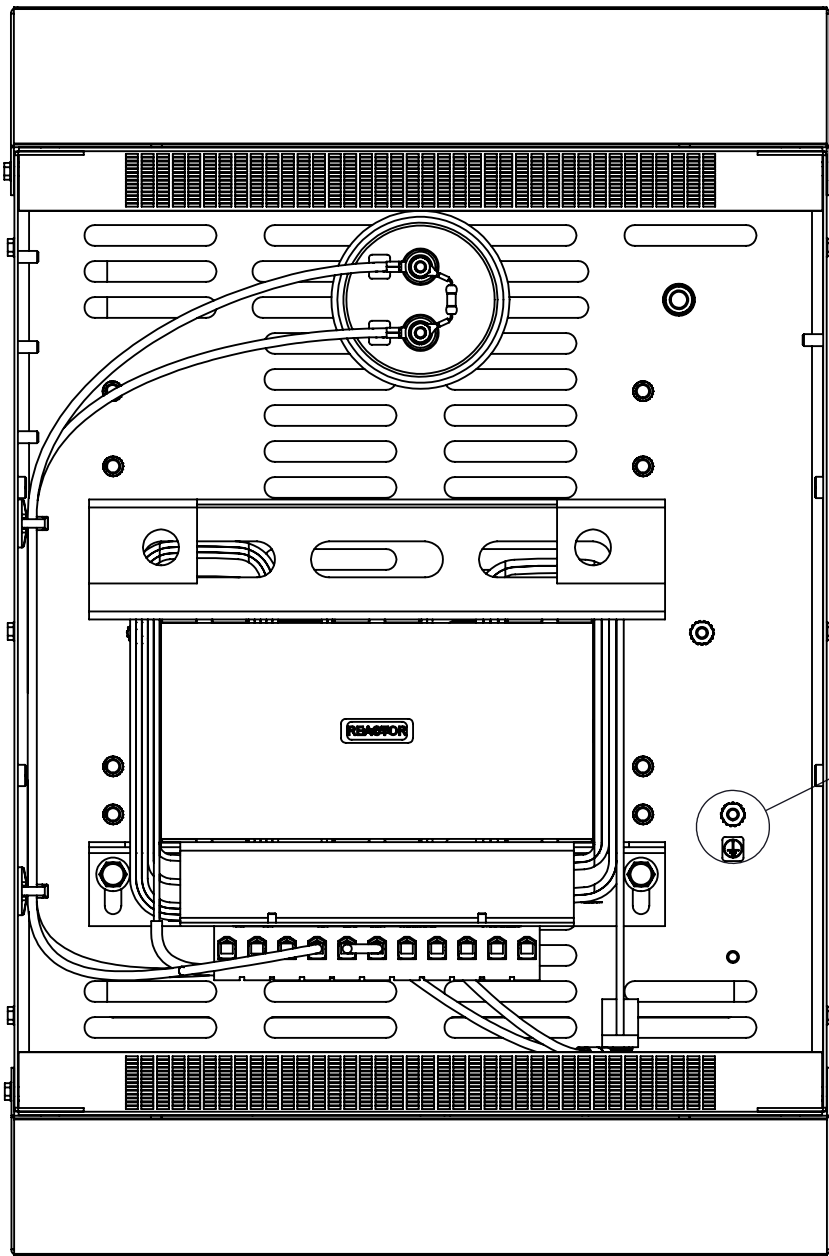
SIDE VIEW
(PANELS REMOVED)



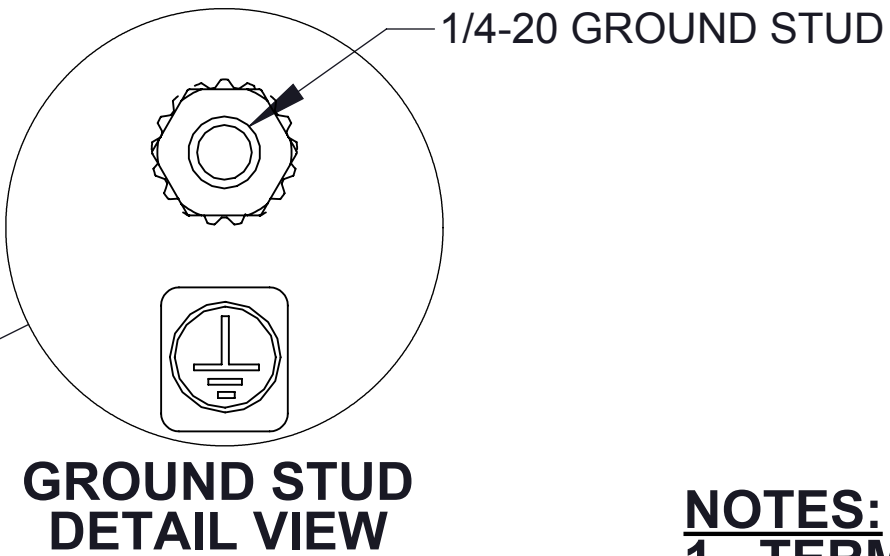
DETAIL A
CUSTOMER CONNECTION
DETAIL VIEW



BOTTOM VIEW



TOP VIEW
(PANELS REMOVED)



GROUND STUD
DETAIL VIEW

- NOTES:**
1. TERMINAL SCREW TIGHTENING TORQUE: 16 IN/LBS.
2. WIRE RANGE: 4-14 AWG.
3. REFER TO USER MANUAL FOR COMPLETE INSTALLATION INSTRUCTIONS.

THE COMPONENT, PART OR ASSEMBLY DESCRIBED IN THIS DOCUMENT MUST COMPLY WITH THE EU(EUROPEAN UNION) DIRECTIVE RoHS2		MATERIAL		CONFIDENTIAL AND PROPRIETARY INFORMATION THIS DOCUMENT CONTAINS CONFIDENTIAL AND PROPRIETARY INFORMATION OF MTE CORPORATION AND MAY NOT BE USED, COPIED OR DISCLOSED TO OTHERS EXCEPT WITH THE AUTHORIZED WRITTEN PERMISSION OF MTE CORPORATION		
CONTAINS <0.1% OF ANY SVHC BY WEIGHT PER REACH REGULATION				DESCRIPTION		
UNLESS OTHERWISE SPECIFIED DIMENSIONS ARE IN INCHES [MM] TOLERANCES ARE: ANGLES: ± 1 ° 1 PLACE .X: ± .1 [2.5] 2 PLACE .XX: ± .03 [0.76] 3 PLACE .XXX: ± .010 [0.254]		DRAWN MN 01/28/15		MATRIX SINGLE PH FILTER 37A, 480V, 60HZ NEMA 3R ENCL		
		CHECKED JM 06/01/16		SIZE D		
		APPROVED JM 06/01/16		DWG No. CD MSW0037D		REV 02
				SCALE 1:4		SHEET 1 OF 1

MTE
AN SL INDUSTRIES COMPANY

N83 W13330 Leon Road
Menomonee Falls, WI 53051 USA
800.455.4683
262.253.8200