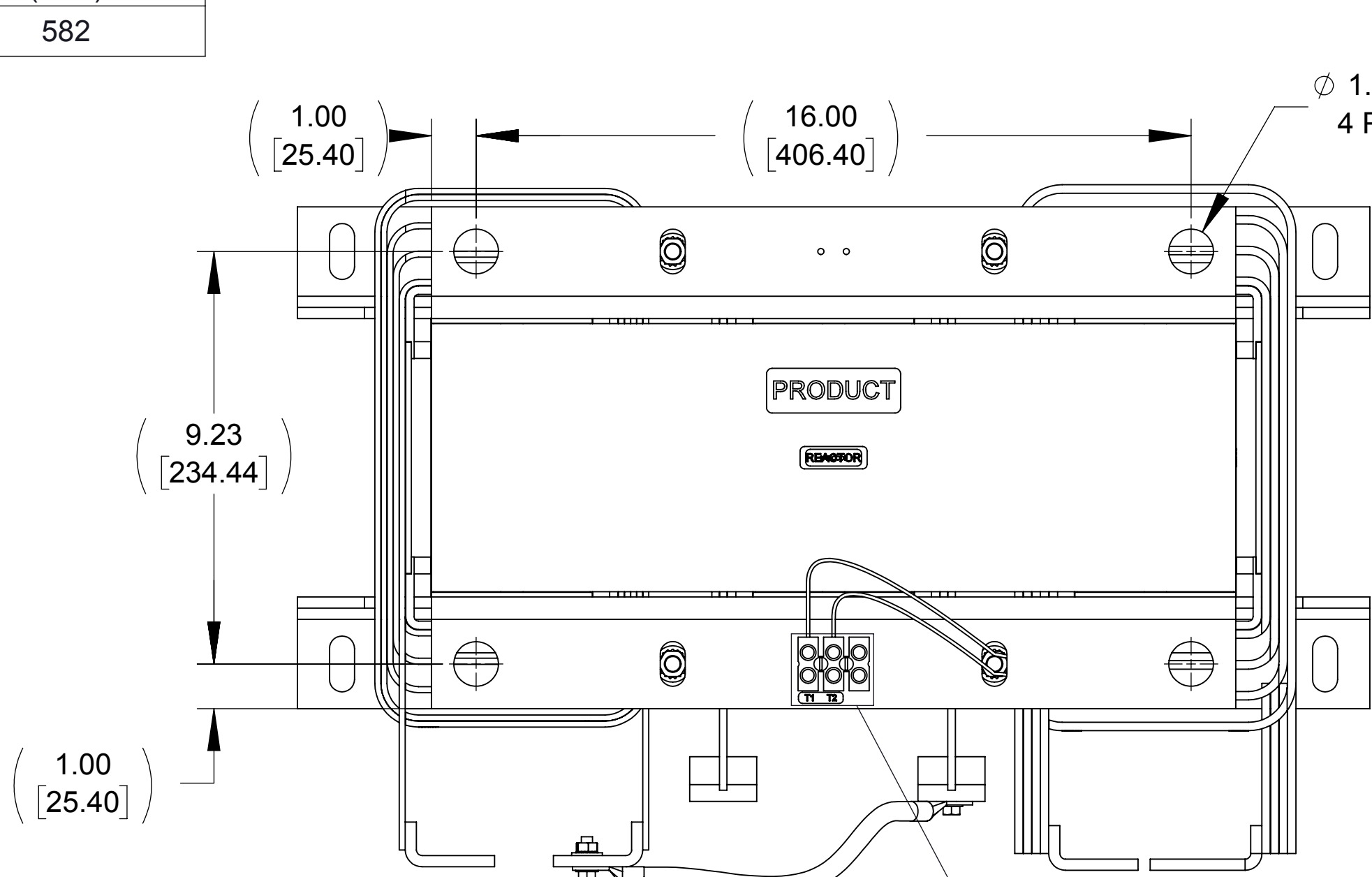
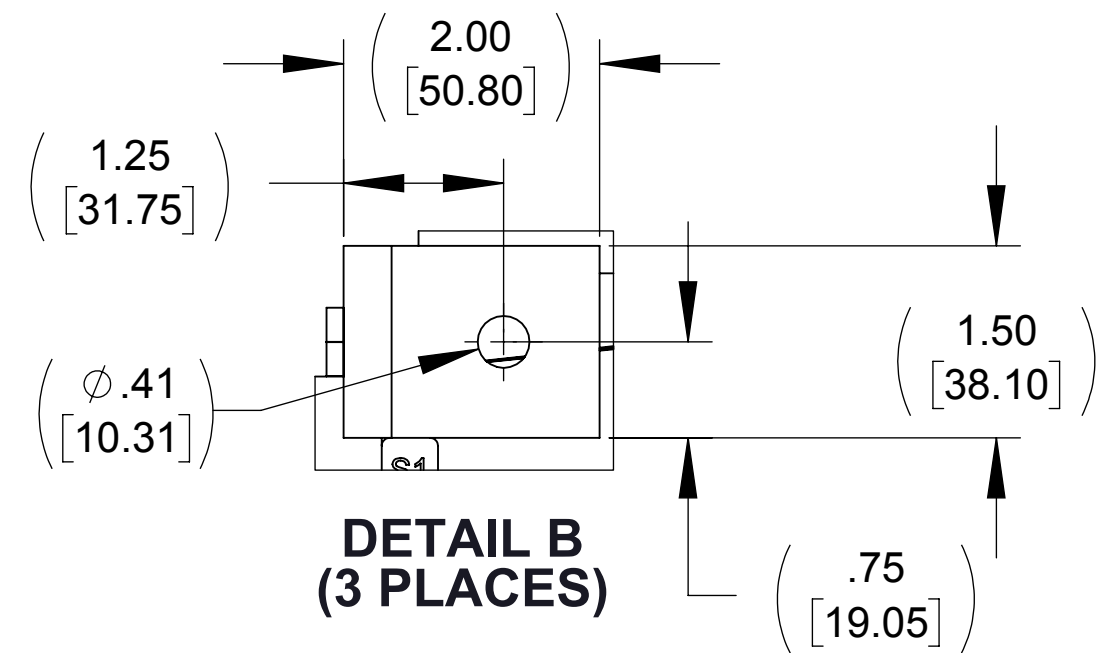


APPROX WEIGHT (LBS)
582

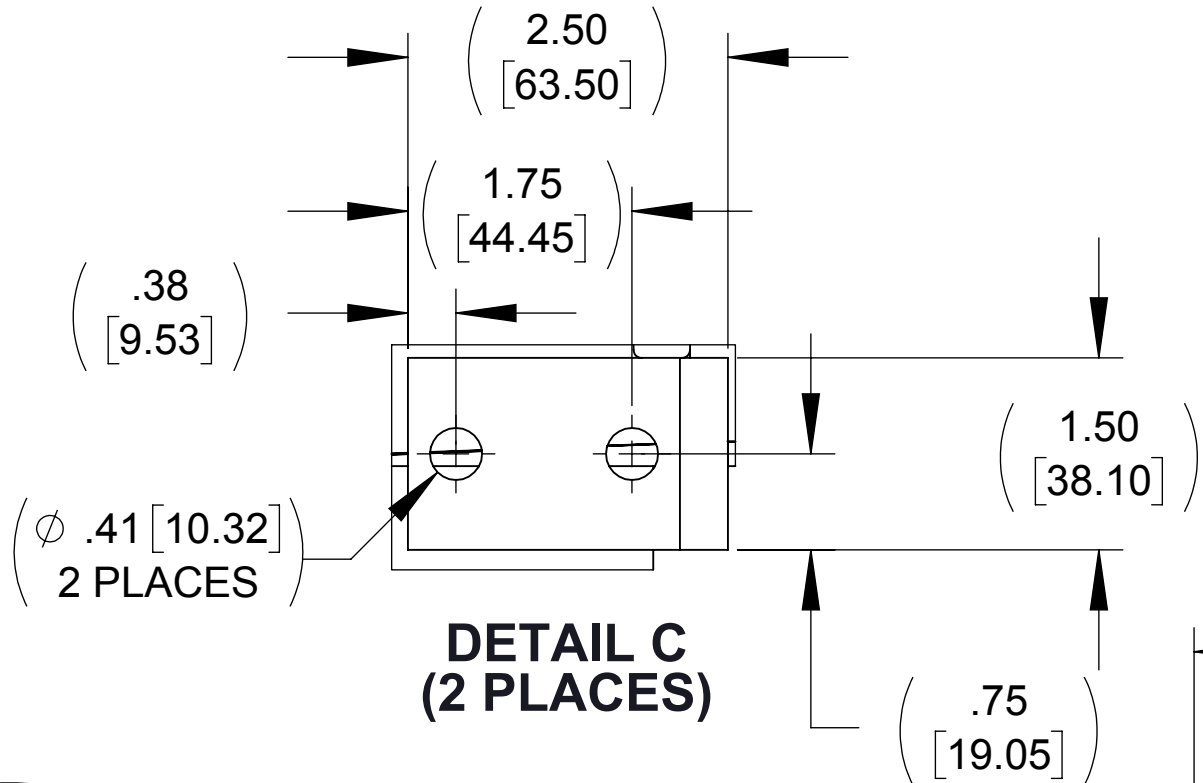
ECO No	DESCRIPTION	REV BY	DATE
M9806	REPLACED CAPPANEL-030C WITH -030C	MN	05/31/16



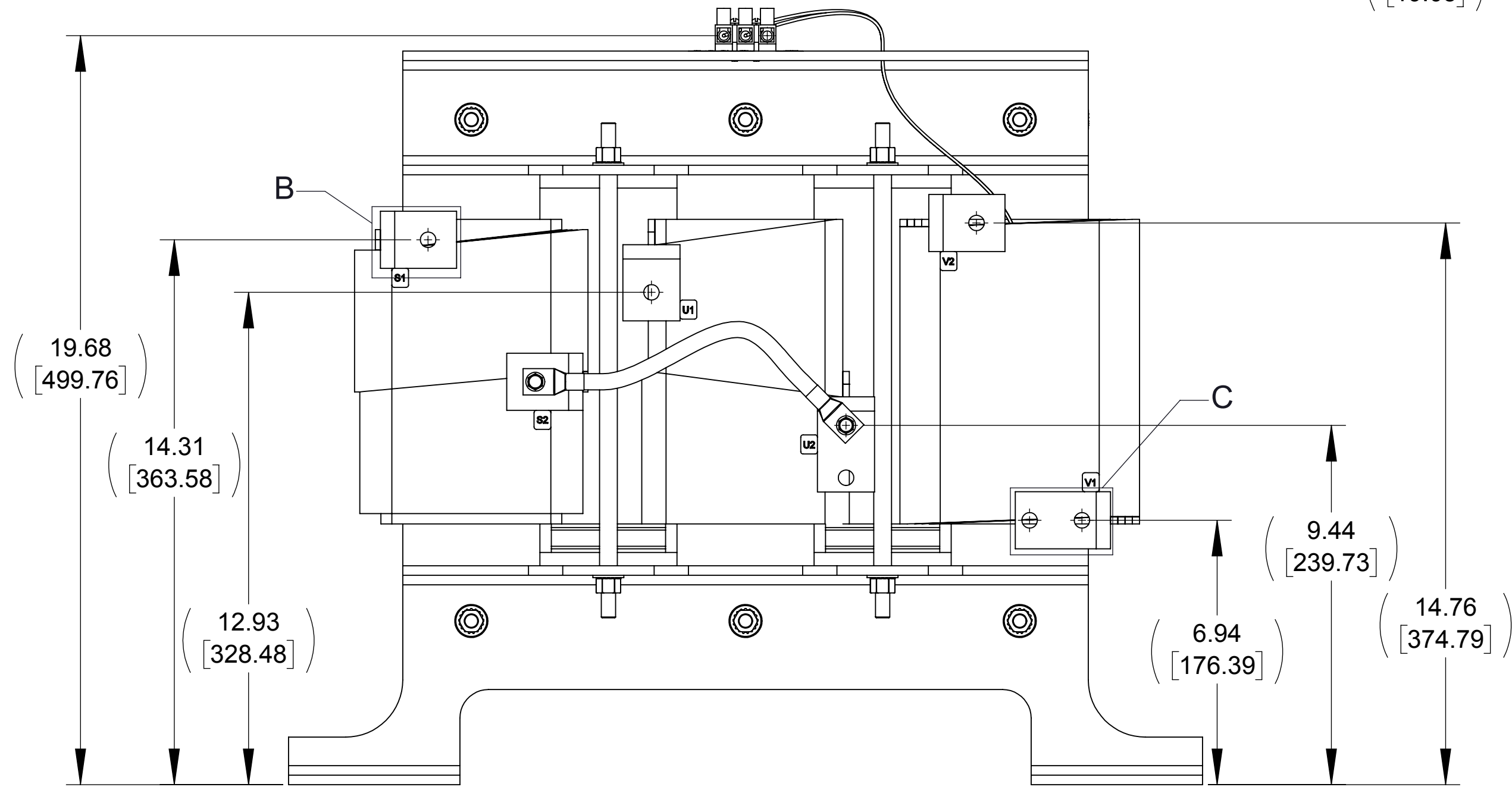
TOP VIEW



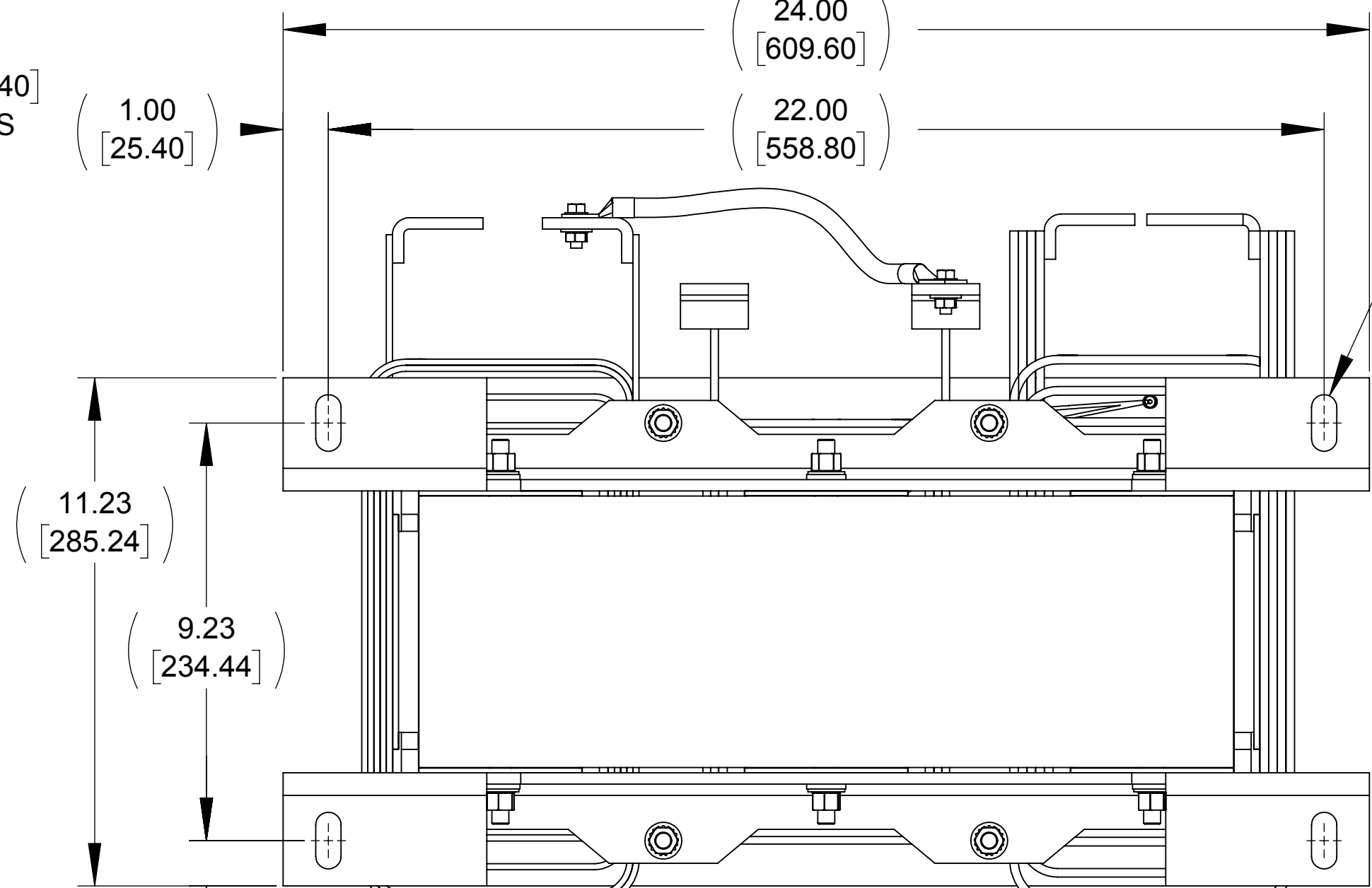
DETAIL B  
(3 PLACES)



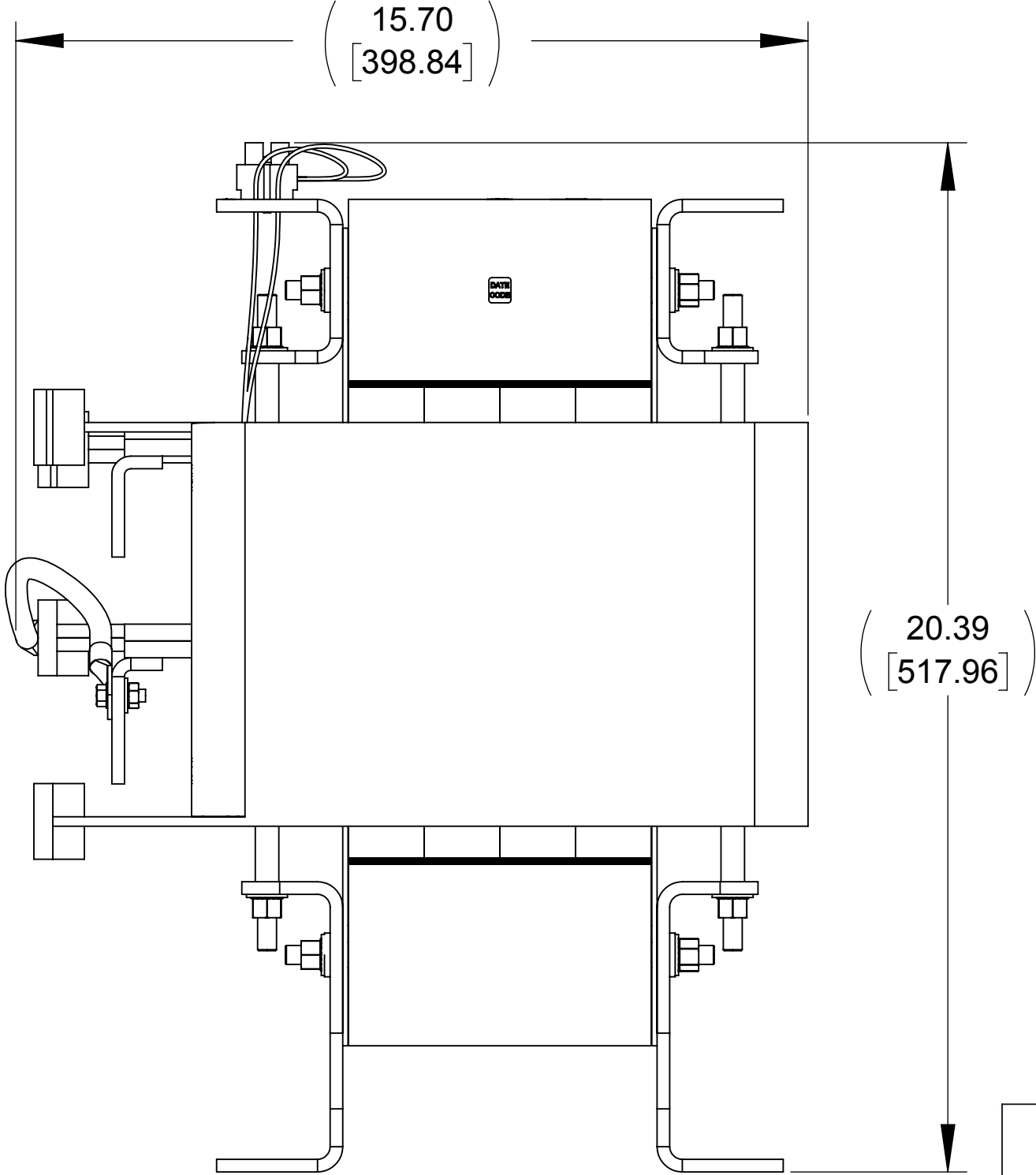
DETAIL C  
(2 PLACES)



FRONT VIEW



BOTTOM VIEW



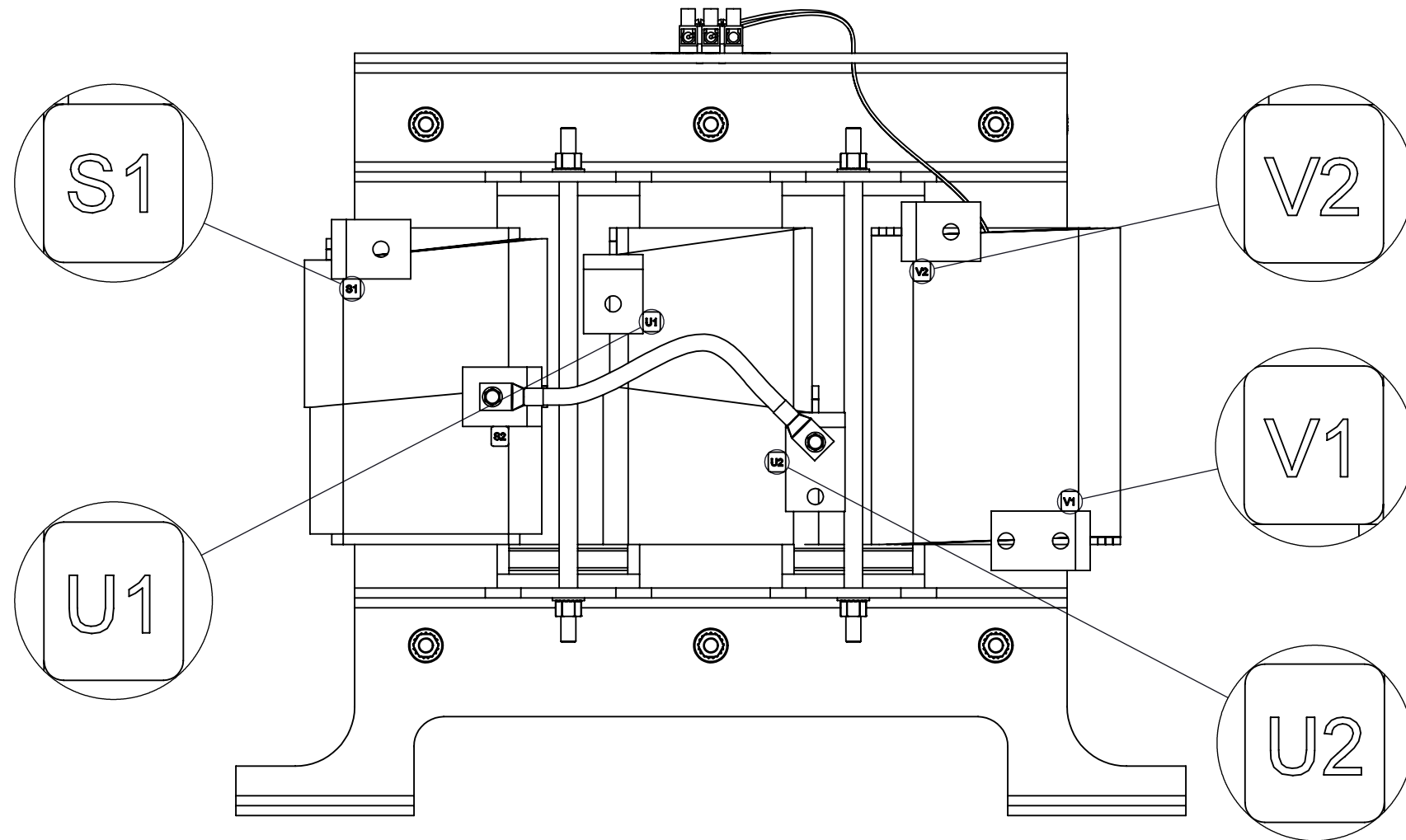
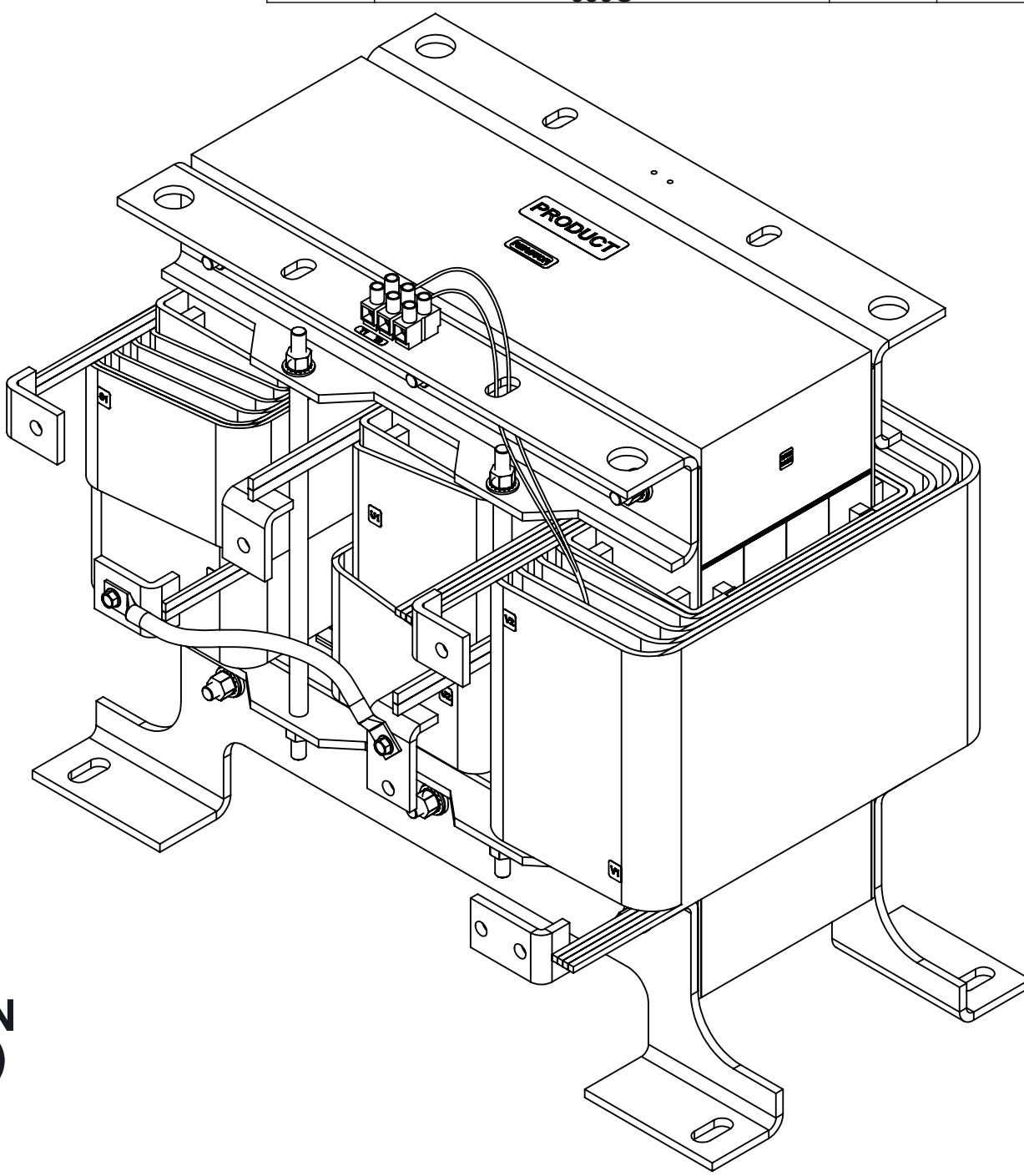
SIDE VIEW

( $\varnothing$ .56 [14.22] X 1.25 [31.75])  
SLOT, 4 PLACES

SEE NOTE 1

SEE NOTE 2

DETAIL A  
CUSTOMER CONNECTION  
DETAIL VIEW (THERMAL)



CUSTOMER CONNECTION  
DETAIL VIEW

NOTES:

1. FILTER INCLUDES CAPPANEL-030C (QTY. 2).
2. TERMINAL SCREW TIGHTENING TORQUE: 16 IN/LBS.
3. WIRE RANGE: 4-14 AWG.
4. REFER TO USER MANUAL FOR COMPLETE INSTALLATION INSTRUCTIONS.

THE COMPONENT, PART OR ASSEMBLY DESCRIBED IN THIS DOCUMENT MUST COMPLY WITH THE EU(EUROPEAN UNION) DIRECTIVE RoHS2		MATERIAL		CONFIDENTIAL AND PROPRIETARY INFORMATION THIS DOCUMENT CONTAINS CONFIDENTIAL AND PROPRIETARY INFORMATION OF MTE CORPORATION AND MAY NOT BE USED, COPIED OR DISCLOSED TO OTHERS EXCEPT WITH THE AUTHORIZED WRITTEN PERMISSION OF MTE CORPORATION		
CONTAINS <0.1% OF ANY SVHC BY WEIGHT PER REACH REGULATION				DESCRIPTION		
UNLESS OTHERWISE SPECIFIED DIMENSIONS ARE IN INCHES [MM] TOLERANCES ARE: ANGLES: $\pm 1^\circ$ 1 PLACE .X: $\pm .1$ [2.5] 2 PLACE .XX: $\pm .03$ [0.76] 3 PLACE .XXX: $\pm .010$ [0.254]		DRAWN MN		DATE 04/16/15		
		CHECKED JM		DATE 06/01/16		
		APPROVED JM		DATE 06/01/16		
				SIZE D		
				DWG No. CD MSP0215D		
				REV 02		
				SCALE 1:3		
				SHEET 1 OF 1		

**MTE**  
AN SL INDUSTRIES COMPANY

N83 W13330 Leon Road  
Menomonee Falls, WI 53051 USA  
800.455-4683  
262.253-8200