

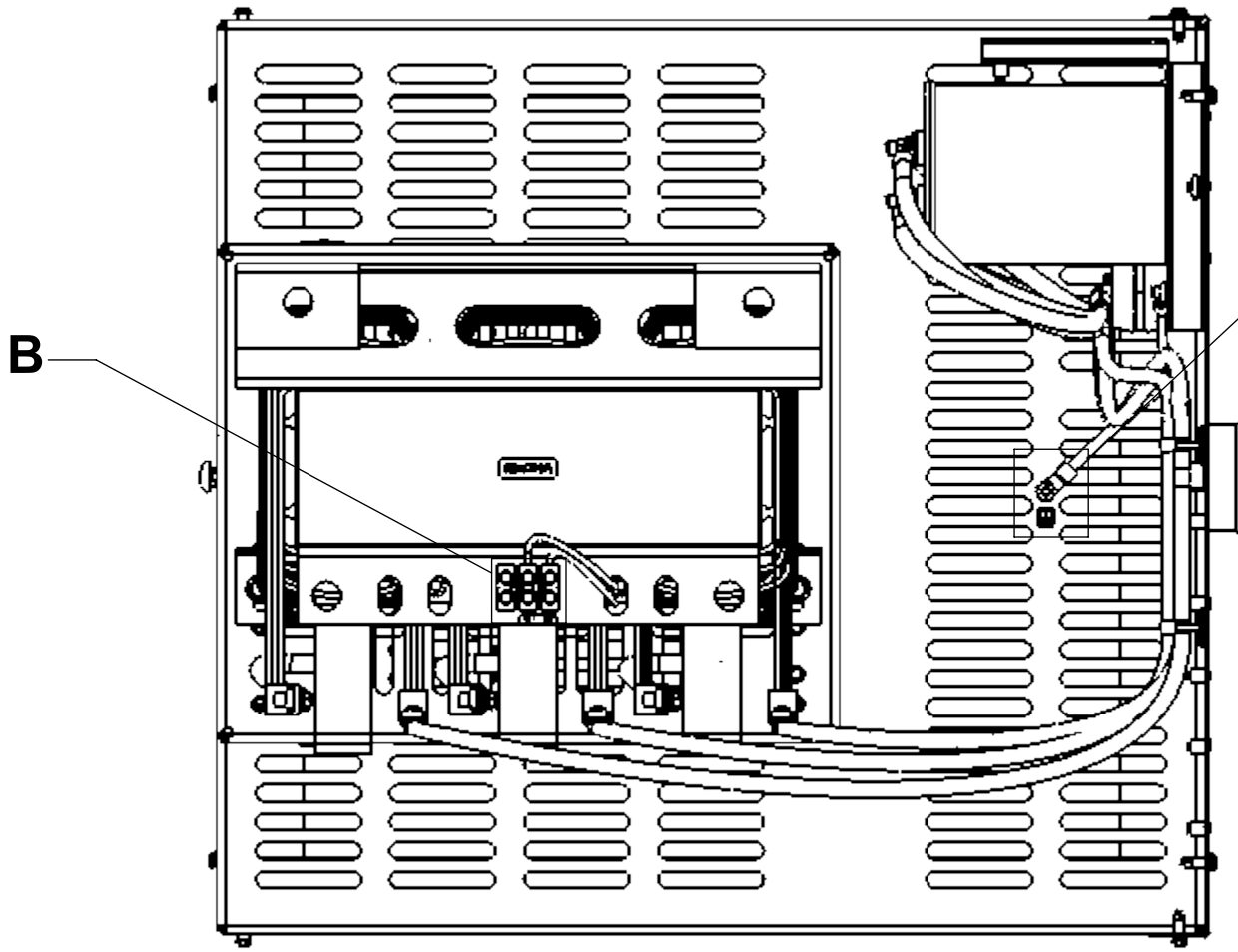
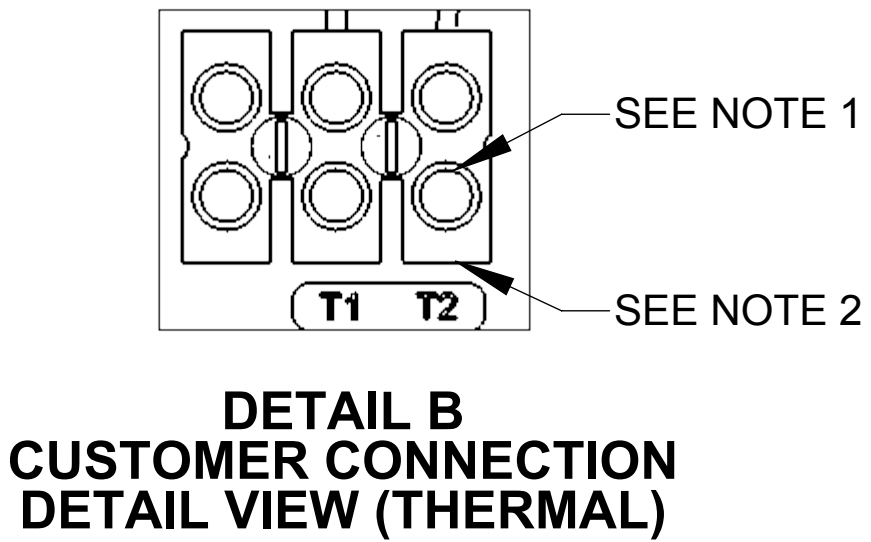
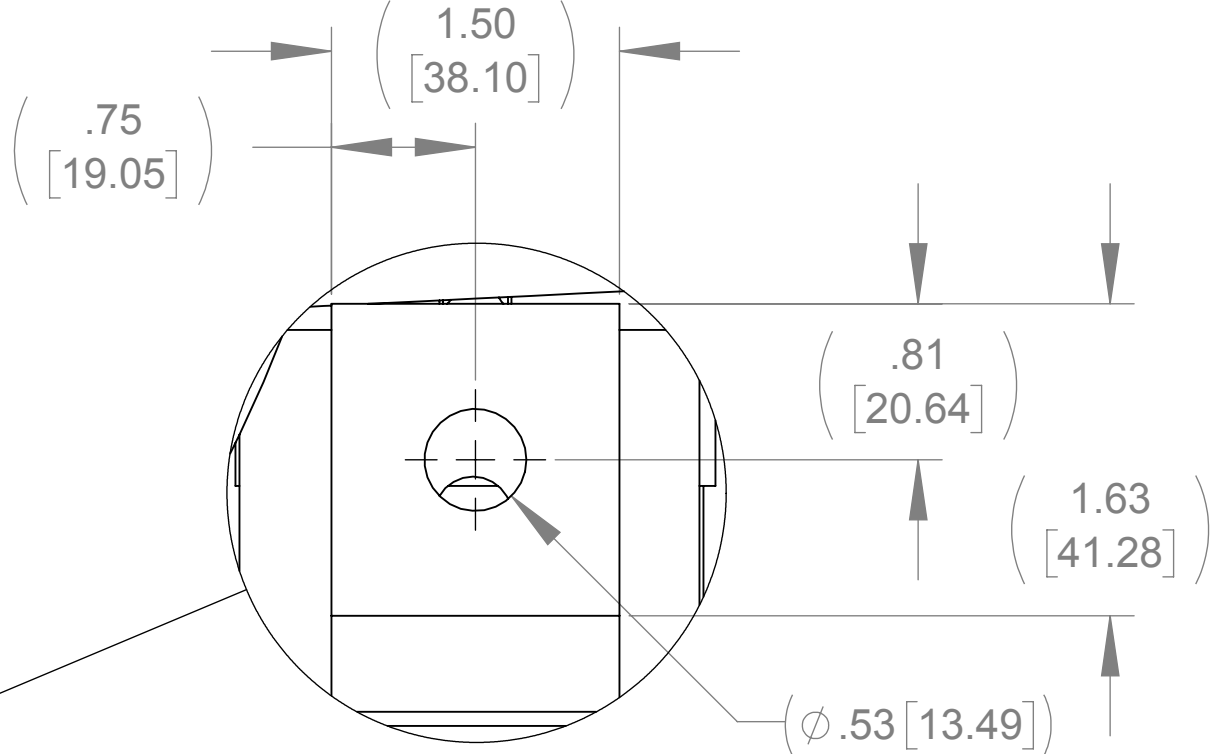
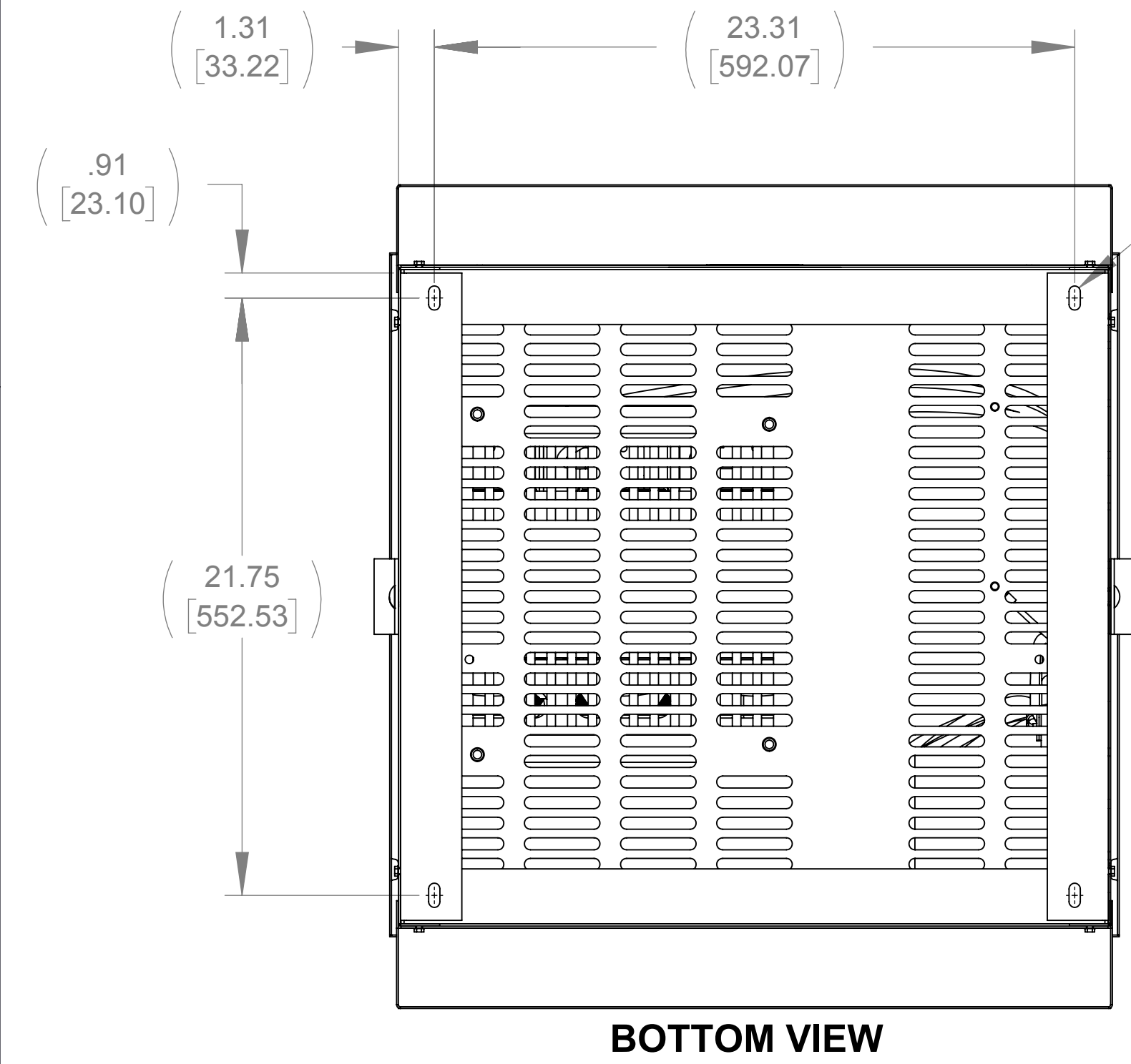
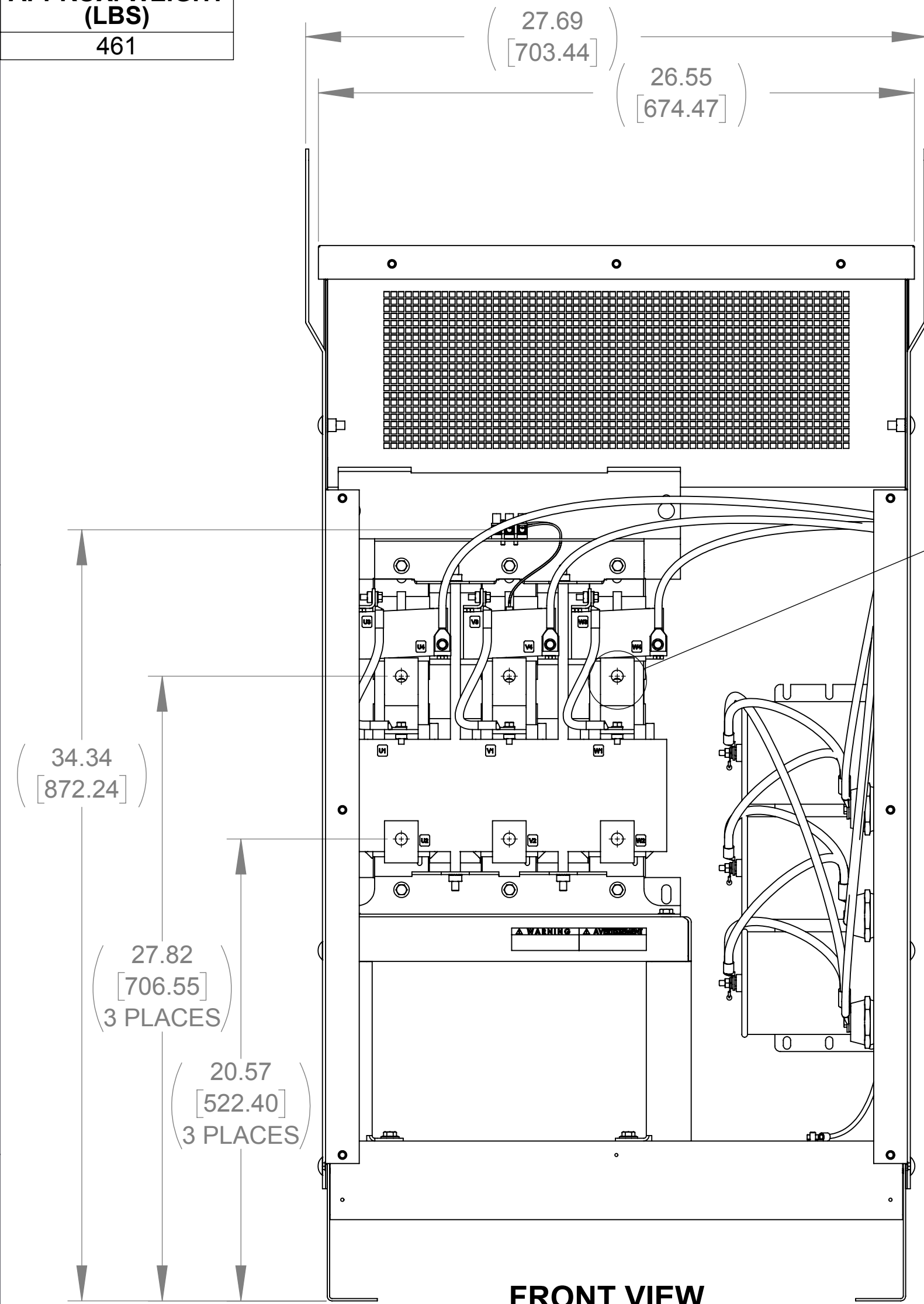
APPROX. WEIGHT
(LBS)
461

D

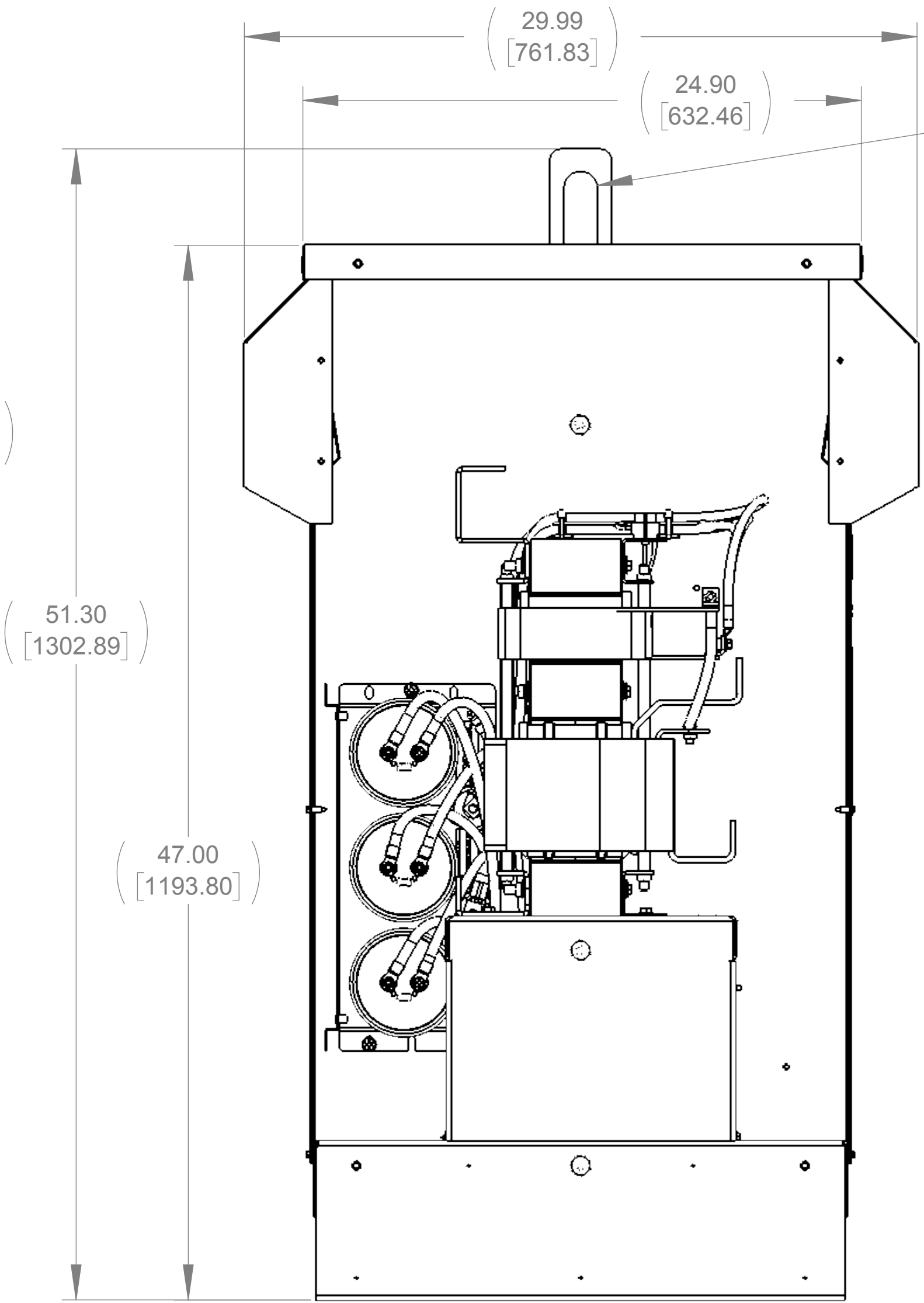
C

B

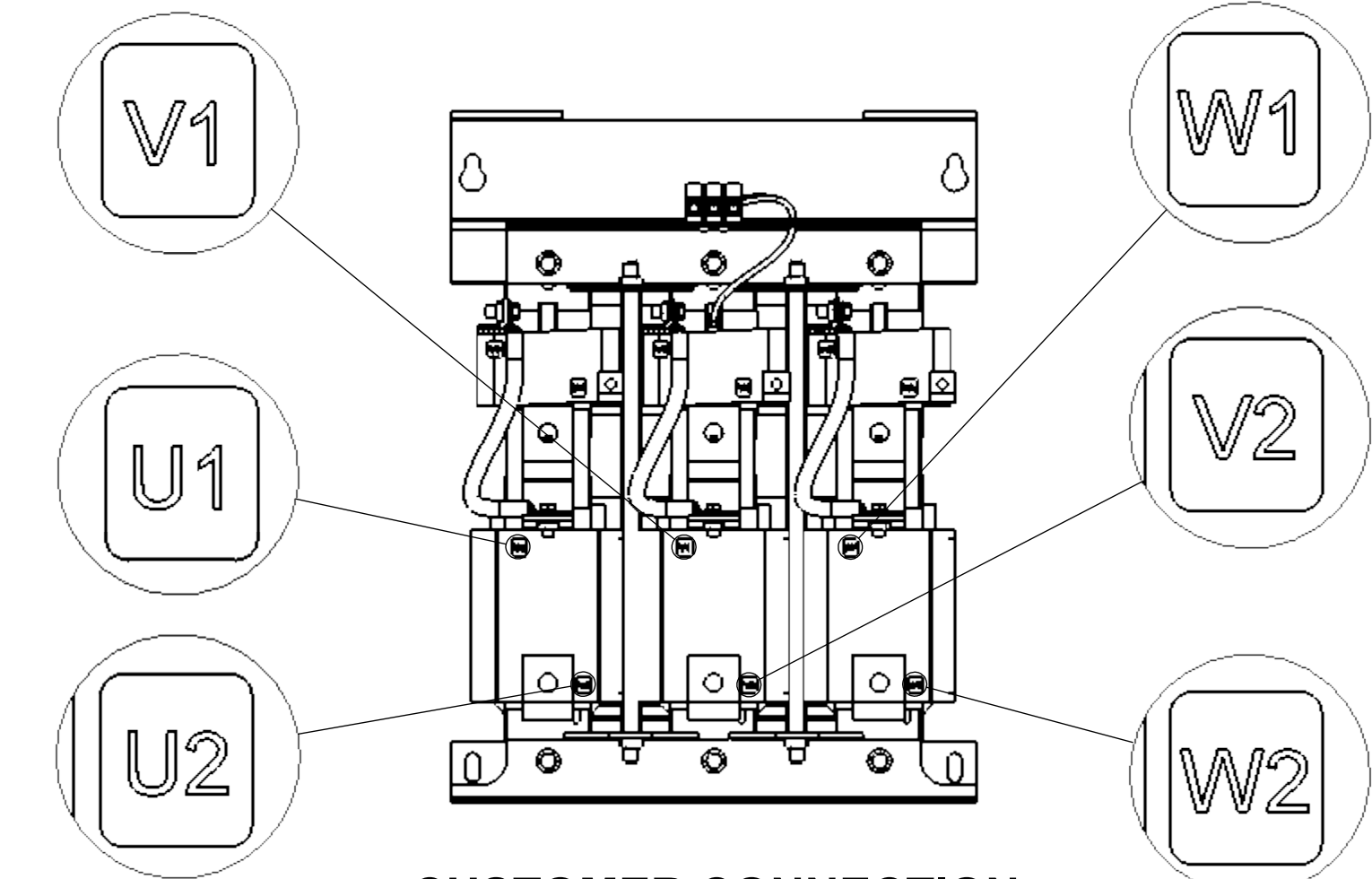
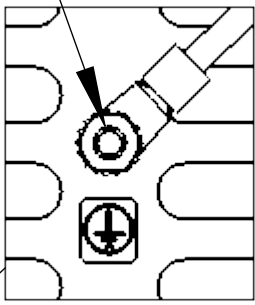
A



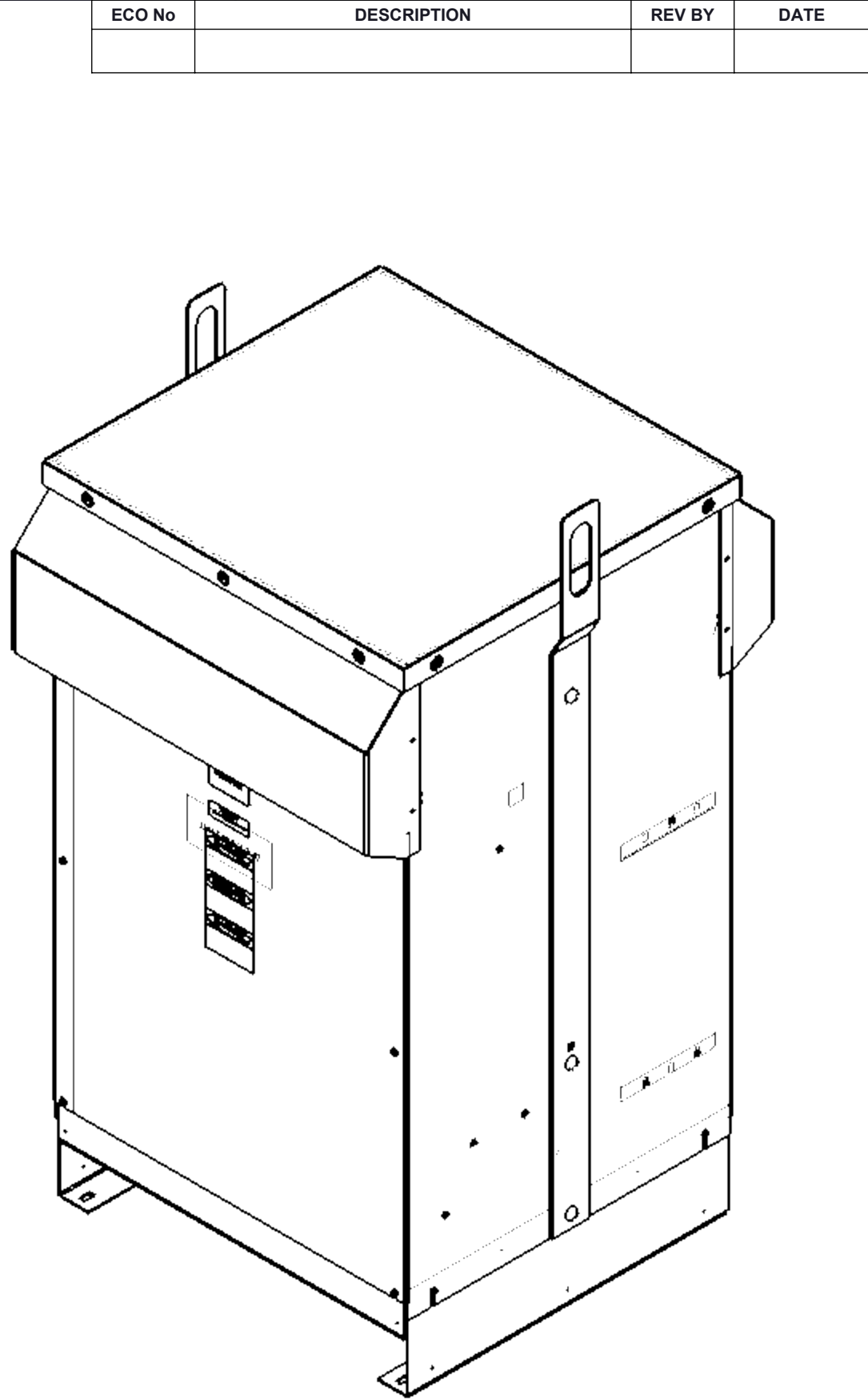
**TOP VIEW
(TOP PANEL REMOVED)**



1/4-20 GROUND STUD



**CUSTOMER CONNECTION
DETAIL VIEW**



D

C

B

A

NOTES:

1. TERMINAL SCREW TIGHTENING TORQUE: 16 IN/LBS.
2. WIRE RANGE: 4-14 AWG.

THE COMPONENT, PART OR ASSEMBLY DESCRIBED IN THIS DOCUMENT MUST COMPLY WITH THE EU(EUROPEAN UNION) DIRECTIVE RoHS2		MATERIAL		CONFIDENTIAL AND PROPRIETARY INFORMATION THIS DOCUMENT CONTAINS CONFIDENTIAL AND PROPRIETARY INFORMATION OF MTE CORPORATION AND MAY NOT BE USED, COPIED OR DISCLOSED TO OTHERS EXCEPT WITH THE AUTHORIZED WRITTEN PERMISSION OF MTE CORPORATION	
CONTAINS <0.1% OF ANY SVHC BY WEIGHT PER REACH REGULATION				DESCRIPTION	
UNLESS OTHERWISE SPECIFIED DIMENSIONS ARE IN INCHES [MM] TOLERANCES ARE: ANGLES: ± 1 ° 1 PLACE .X: ± .1 [2.5] 2 PLACE .XX: ± .03 [0.76] 3 PLACE .XXX: ± .010 [0.254]		MTE POWER QUALITY. SOLVED. N83 W13330 Leon Road Menomonee Falls, WI 53051 USA 800.455.4683 262.253.8200		MATRIX AP 403A 240V 60Hz FILTER, NEMA 3R ENCL	
DRAWN KV		DATE 07/31/18		SIZE D	DWG No. CD MAPW0403A
CHECKED KV		DATE 08/01/18		REV 00	
APPROVED AK		DATE 10/02/18		SCALE 1:5	SHEET 1 OF 1