

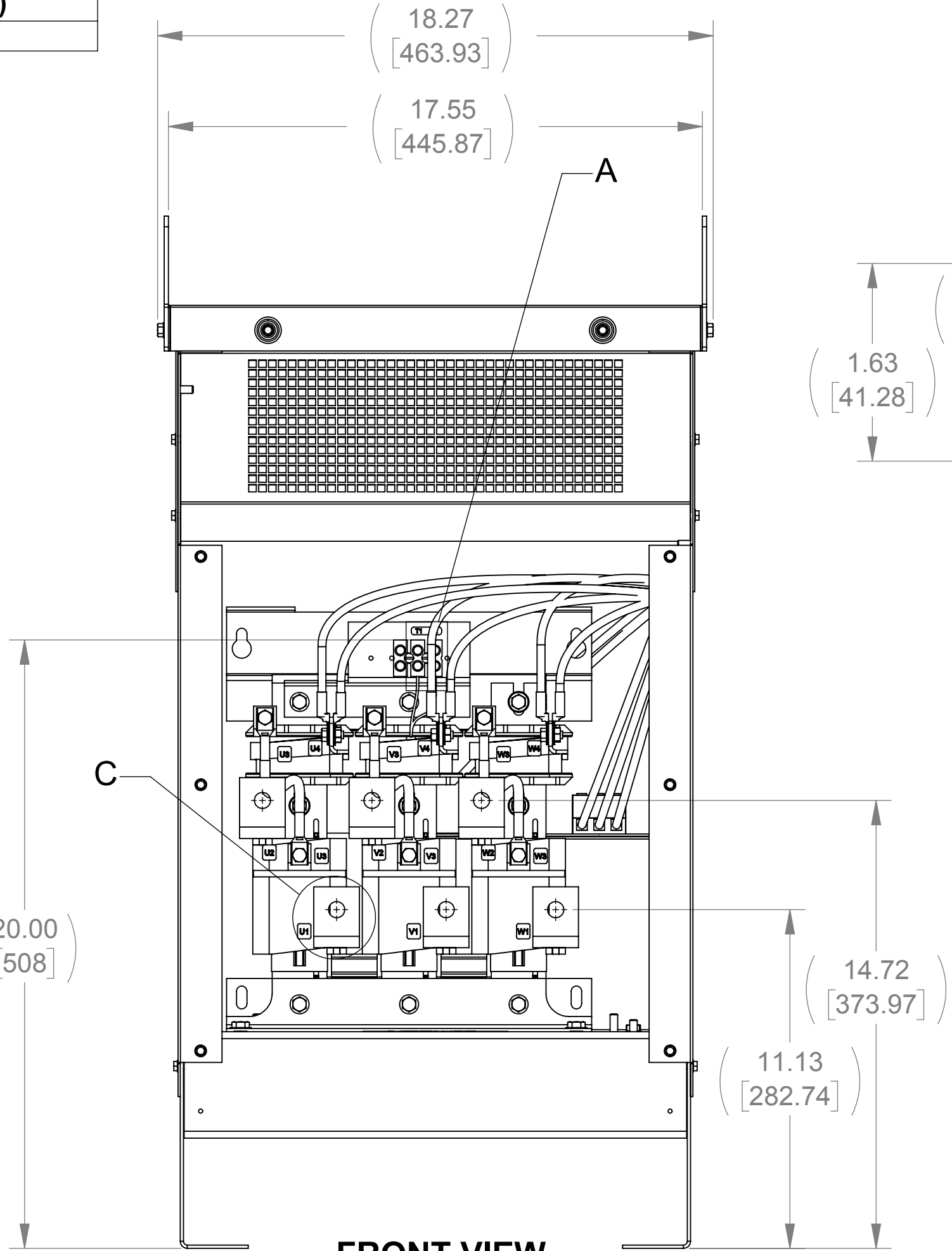
APPROX. WEIGHT  
(LBS)  
259

D

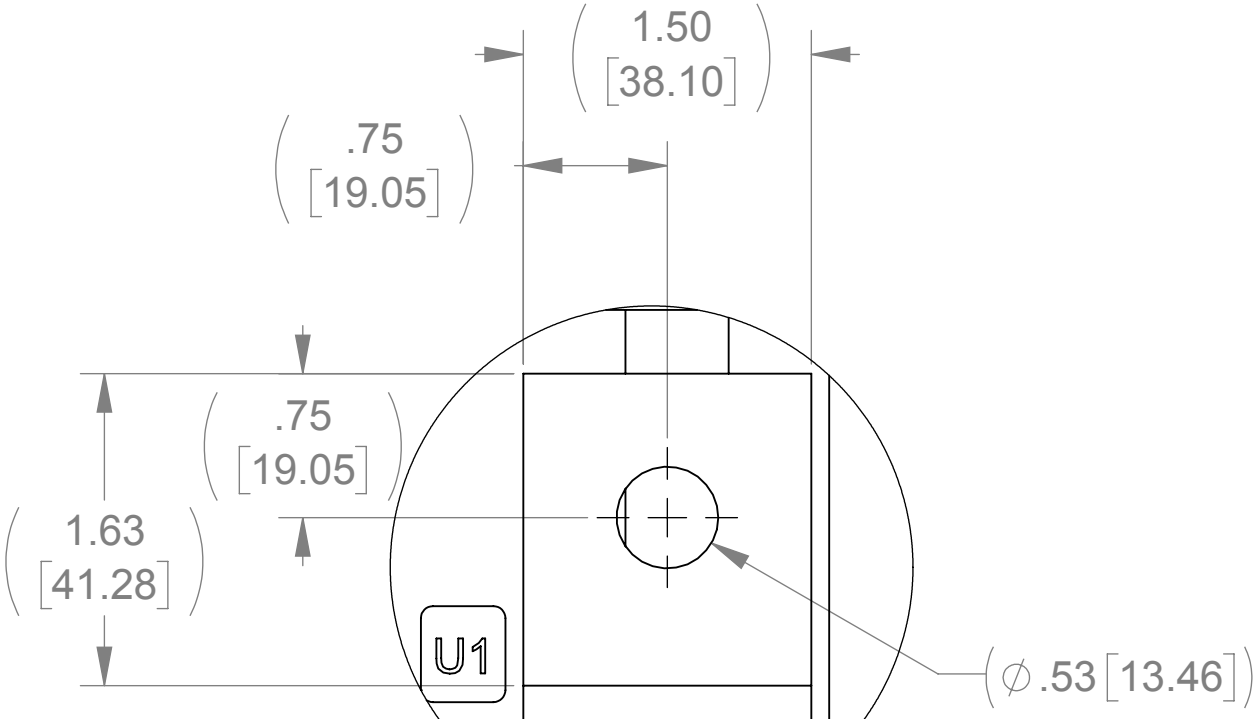
C

B

A

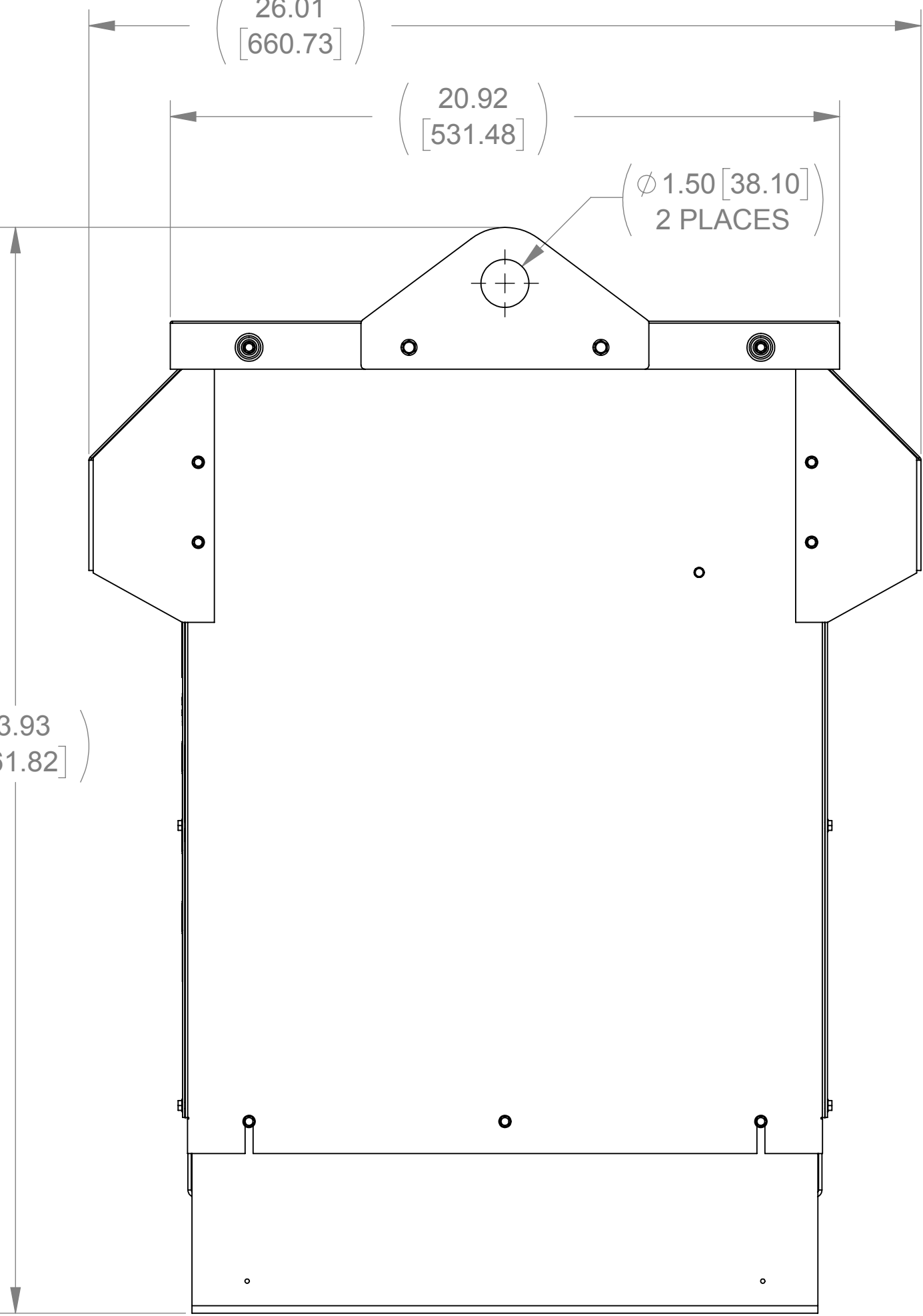


FRONT VIEW  
(PANEL REMOVED)



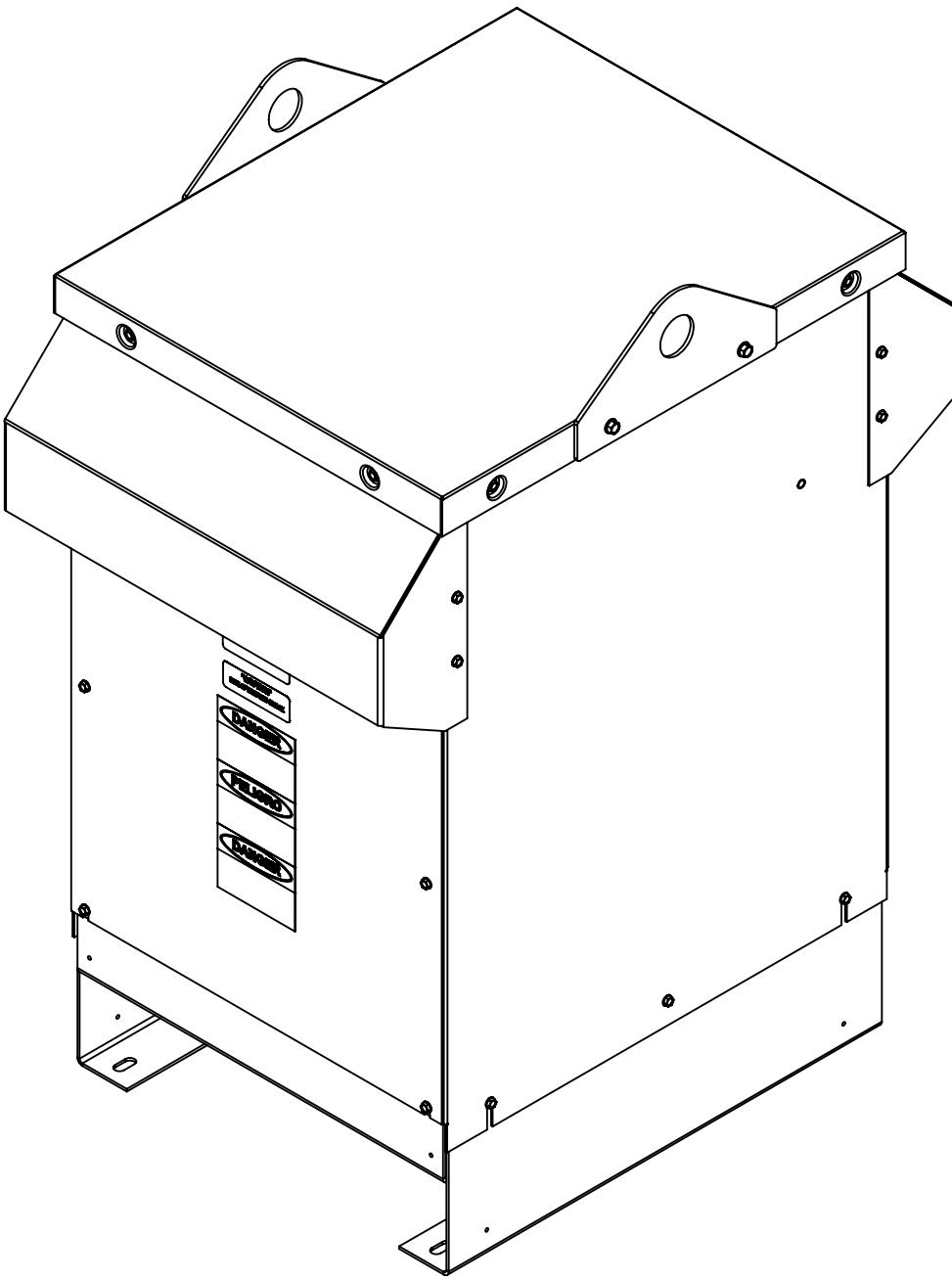
DETAIL C  
(6 PLACES)

( 33.93 )  
[ 861.82 ]



SIDE VIEW  
(PANELS REMOVED)

DETAIL A  
CUSTOMER CONNECTION  
(THERMAL)

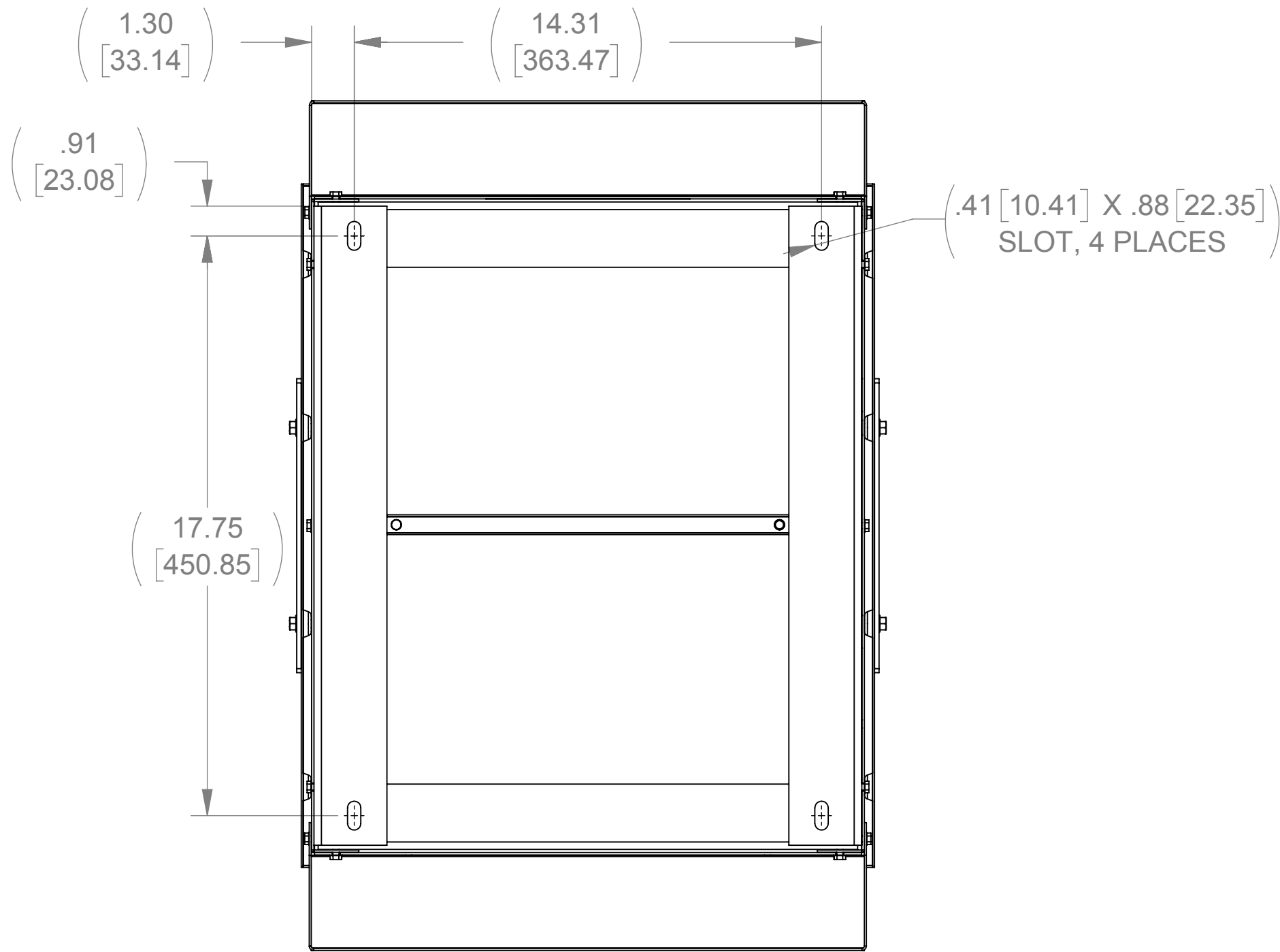


D

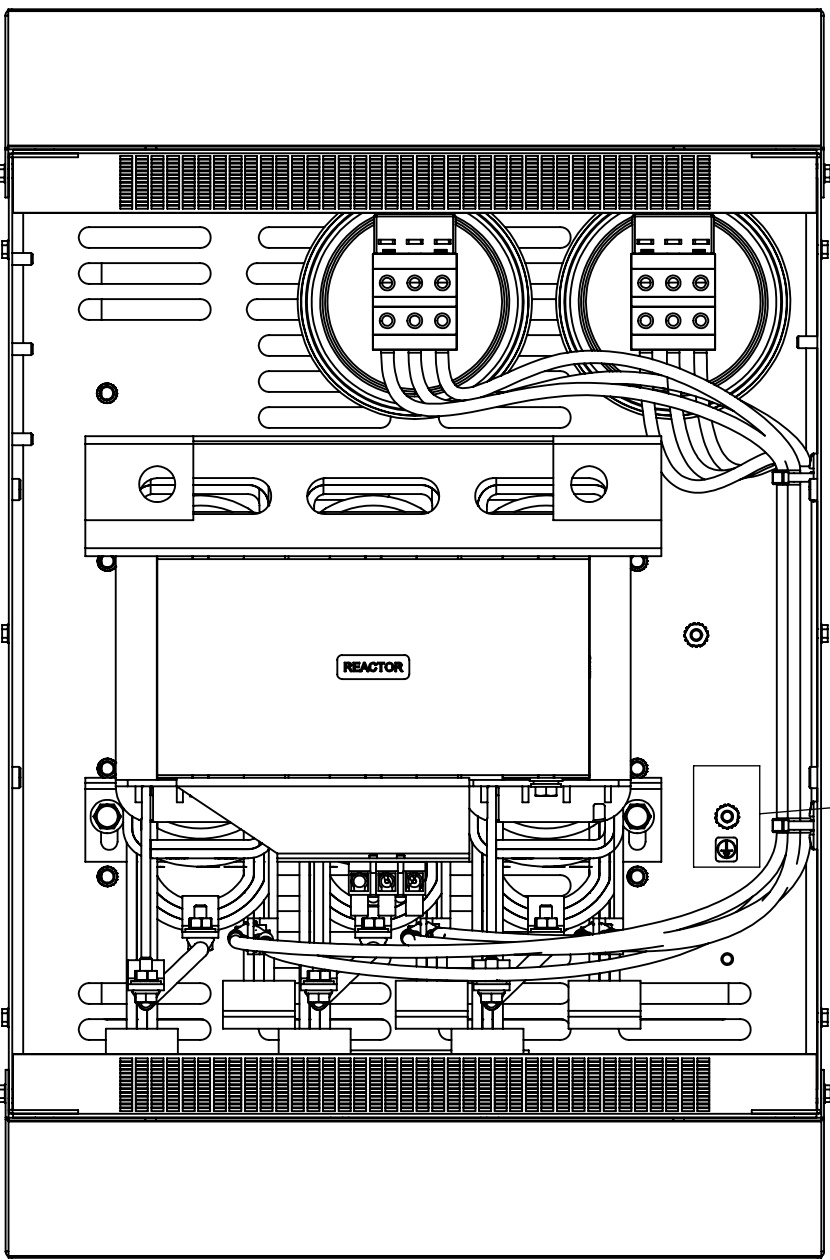
C

B

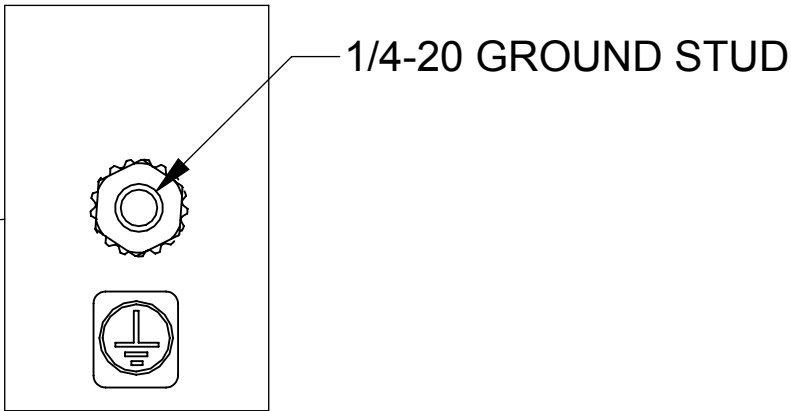
A



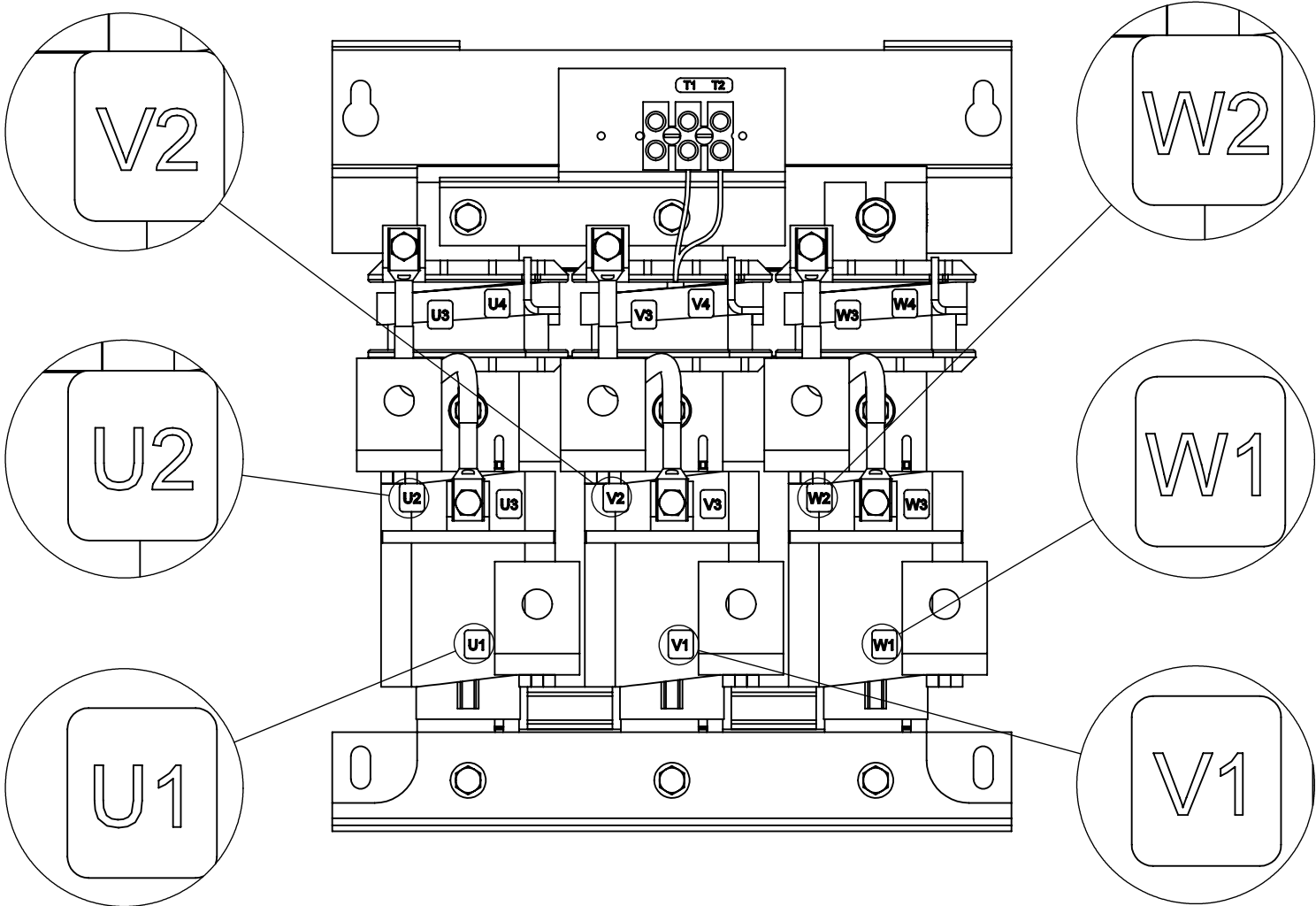
BOTTOM VIEW



TOP VIEW  
(PANELS REMOVED)



1/4-20 GROUND STUD



CUSTOMER CONNECTION  
DETAIL VIEW

NOTES:

1. TERMINAL SCREW TIGHTENING TORQUE: 16 IN/LBS
2. WIRE RANGE: 4-14 AWG.

ECO No		DESCRIPTION		REV BY	DATE

THE COMPONENT, PART OR ASSEMBLY DESCRIBED IN THIS DOCUMENT MUST COMPLY WITH THE EU(EUROPEAN UNION) DIRECTIVE RoHS2		MATERIAL		CONFIDENTIAL AND PROPRIETARY INFORMATION THIS DOCUMENT CONTAINS CONFIDENTIAL AND PROPRIETARY INFORMATION OF MTE CORPORATION AND MAY NOT BE USED, COPIED OR DISCLOSED TO OTHERS EXCEPT WITH THE AUTHORIZED WRITTEN PERMISSION OF MTE CORPORATION	
CONTAINS <0.1% OF ANY SVHC BY WEIGHT PER REACH REGULATION				DESCRIPTION	
UNLESS OTHERWISE SPECIFIED DIMENSIONS ARE IN INCHES [MM] TOLERANCES ARE:  ANGLES: ± 1 °  1 PLACE .X: ± .1 [2.5]  2 PLACE .XX: ± .03 [0.76]  3 PLACE .XXX: ± .010 [0.254]		<b>MTE</b> POWER QUALITY. SOLVED.  N83 W13330 Leon Road Menomonee Falls, WI 53051 USA 800.455.4683 262.253.8200		MATRIX AP 208A 240V 60Hz FILTER, NEMA 3R ENCL	
DRAWN KV		DATE 08/03/18		SIZE D	
CHECKED KV		DATE 10/09/18		DWG No. CD MAPW0208A	
APPROVED AK		DATE 10/10/18		REV 00	
SCALE 1:4				SHEET 1 OF 1	