

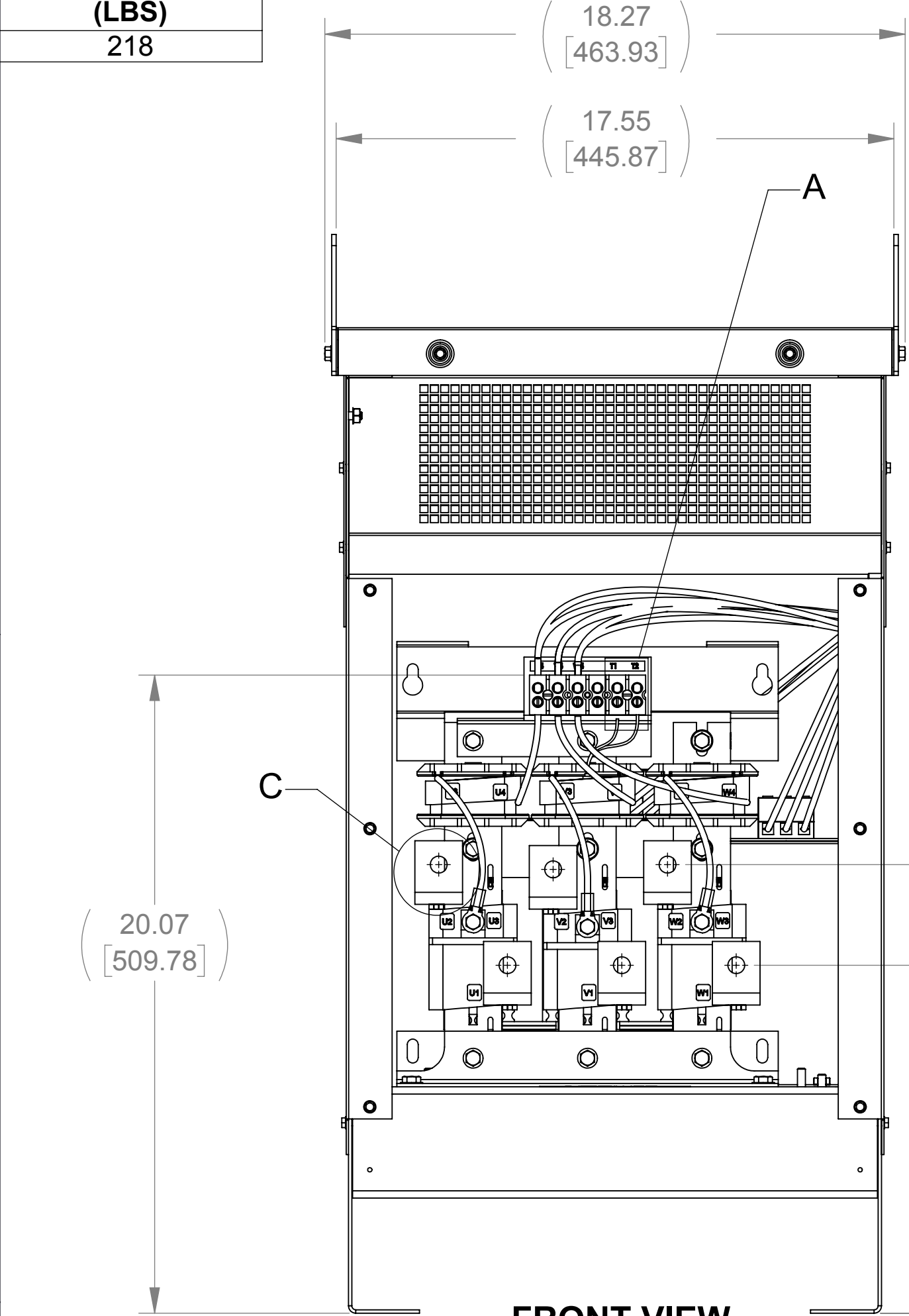
APPROX. WEIGHT  
(LBS)  
218

D

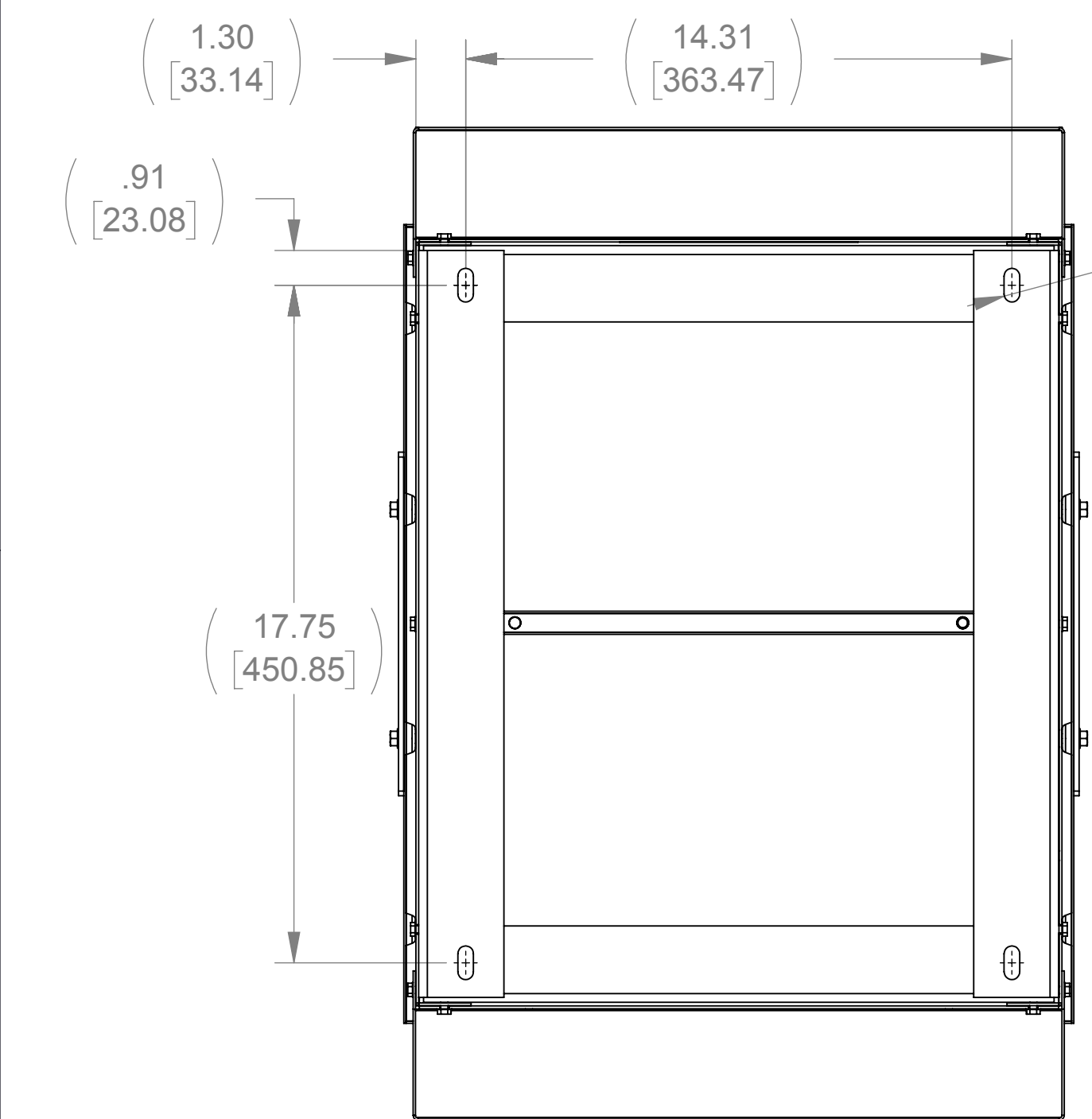
C

B

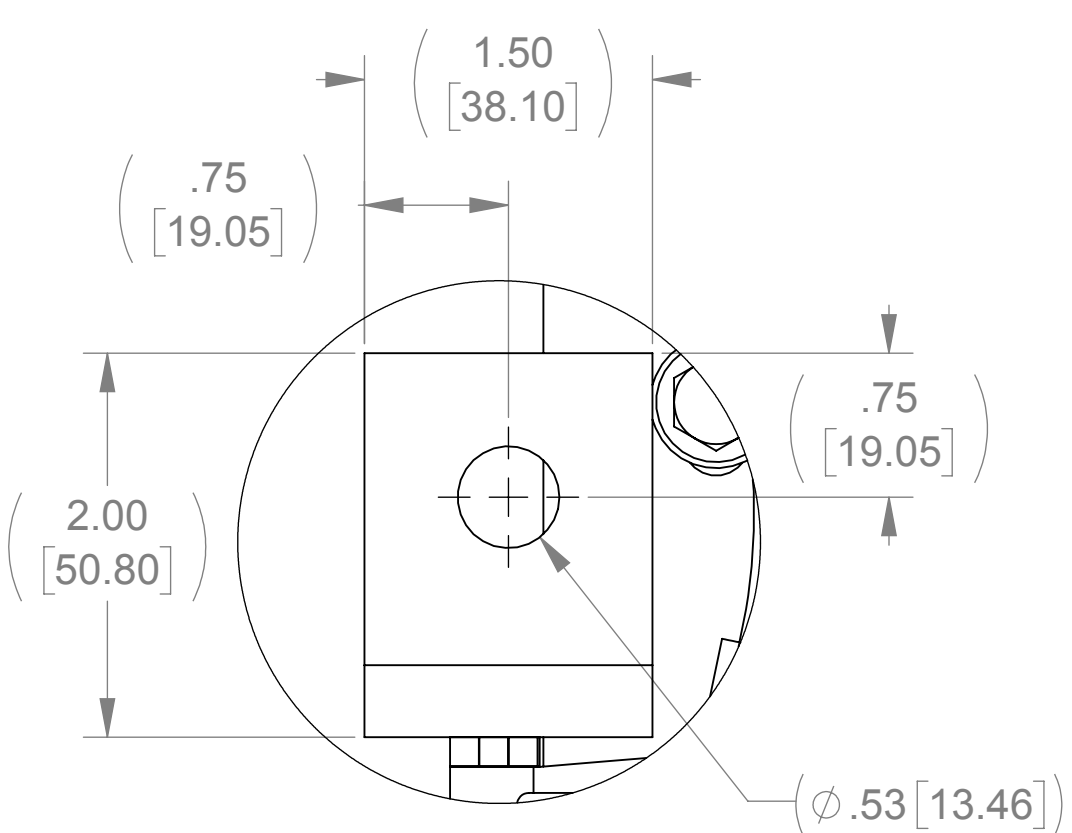
A



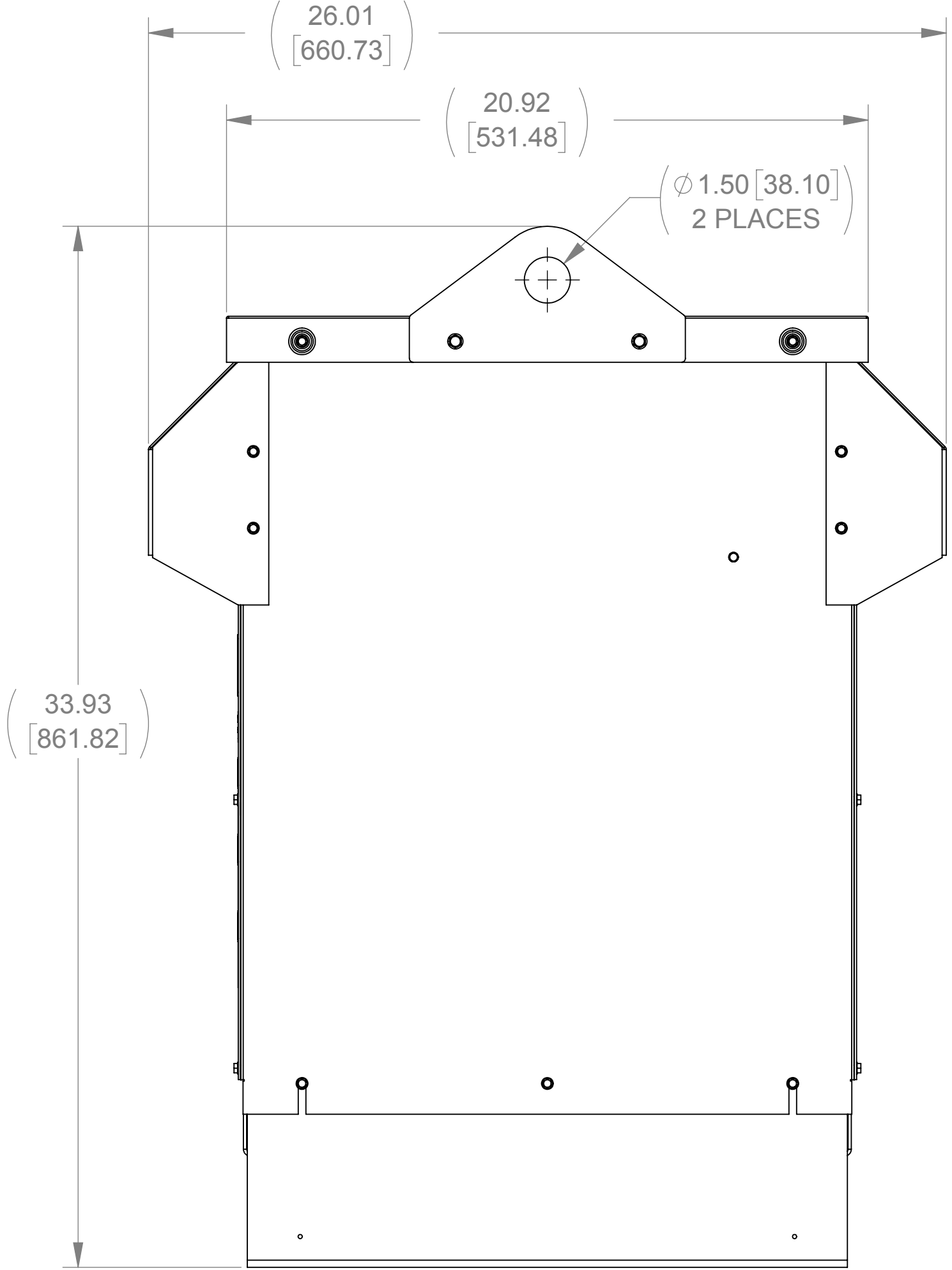
FRONT VIEW  
(PANEL REMOVED)



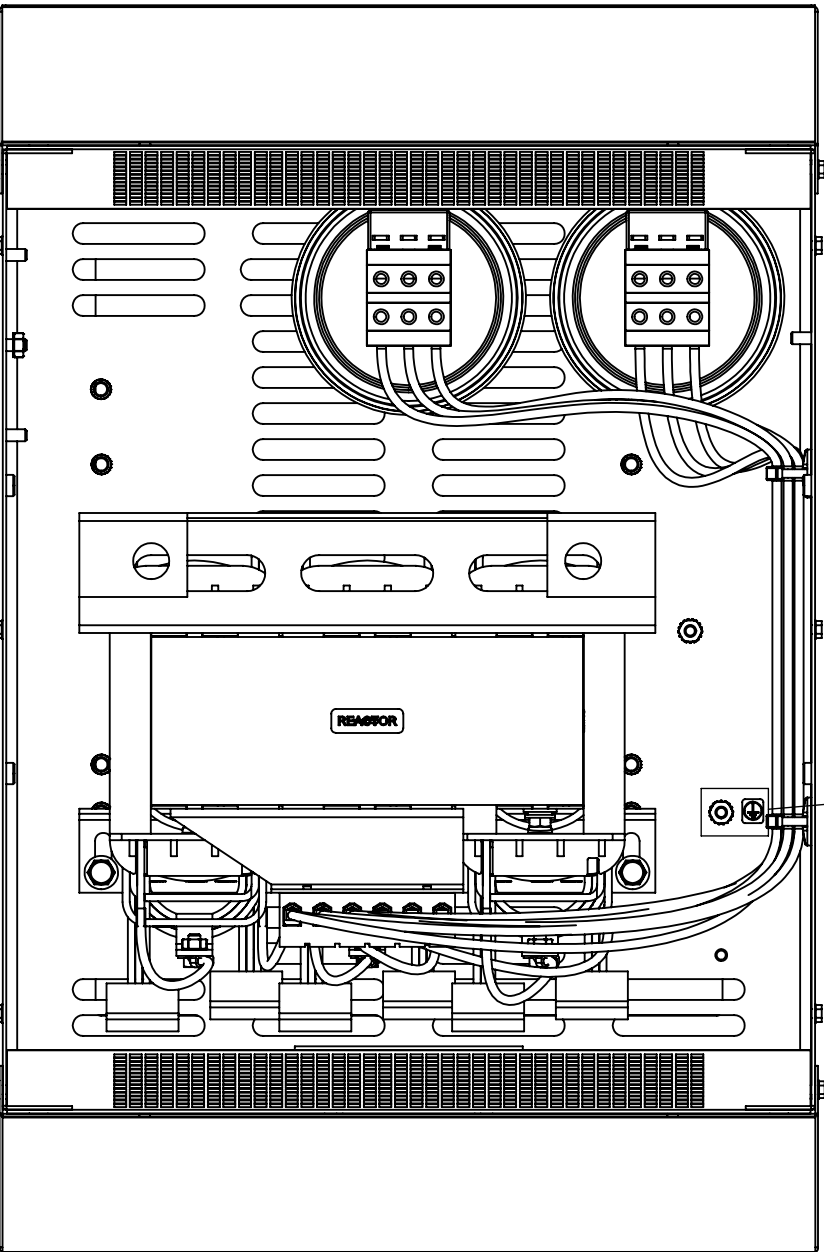
BOTTOM VIEW



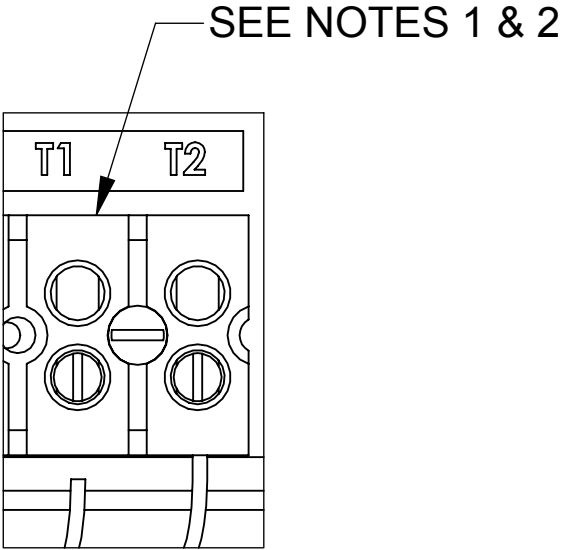
DETAIL C  
(6 PLACES)



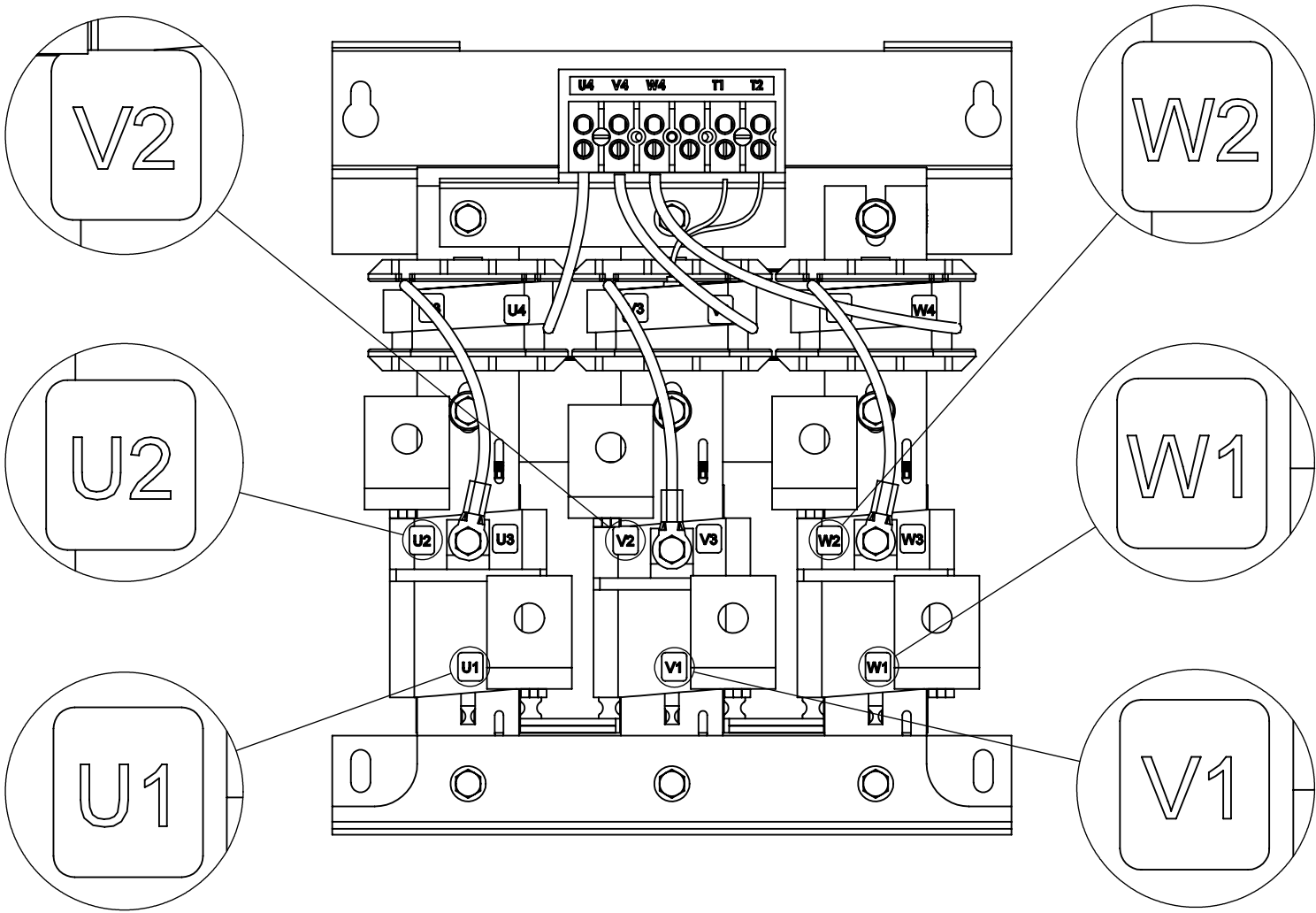
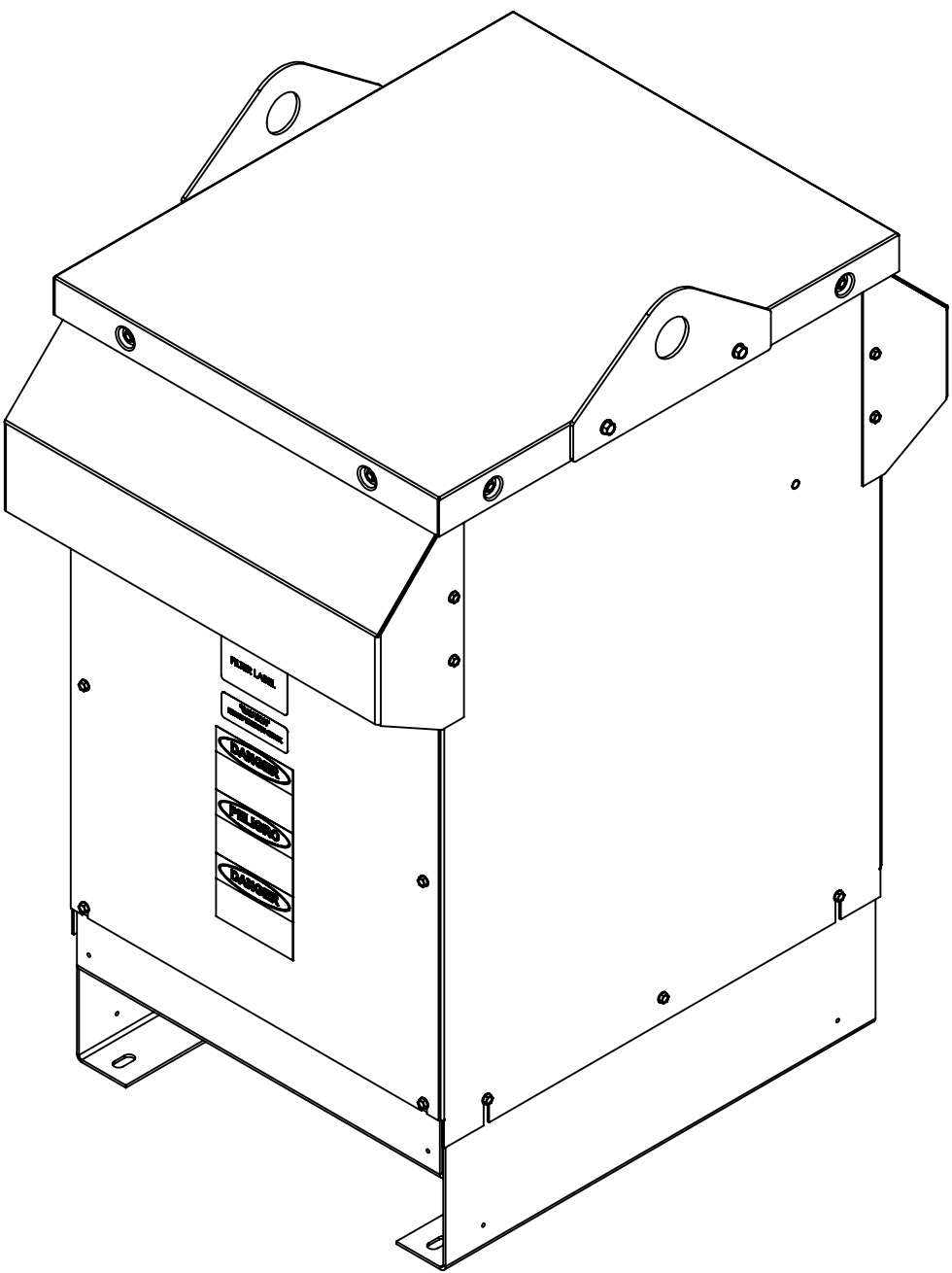
SIDE VIEW  
(PANELS REMOVED)



TOP VIEW  
(PANELS REMOVED)



DETAIL A  
CUSTOMER CONNECTION  
(THERMAL)



CUSTOMER CONNECTION  
DETAIL VIEW

NOTES:

1. TERMINAL SCREW TIGHTENING TORQUE: 16 IN/LBS
2. WIRE RANGE: 4-14 AWG.

THE COMPONENT, PART OR ASSEMBLY DESCRIBED IN THIS DOCUMENT MUST COMPLY WITH THE EU(EUROPEAN UNION) DIRECTIVE RoHS2		MATERIAL		CONFIDENTIAL AND PROPRIETARY INFORMATION THIS DOCUMENT CONTAINS CONFIDENTIAL AND PROPRIETARY INFORMATION OF MTE CORPORATION AND MAY NOT BE USED, COPIED OR DISCLOSED TO OTHERS EXCEPT WITH THE AUTHORIZED WRITTEN PERMISSION OF MTE CORPORATION	
CONTAINS <0.1% OF ANY SVHC BY WEIGHT PER REACH REGULATION				DESCRIPTION	
UNLESS OTHERWISE SPECIFIED DIMENSIONS ARE IN INCHES [MM] TOLERANCES ARE:  ANGLES: ± 1 °  1 PLACE .X: ± .1 [2.5]  2 PLACE .XX: ± .03 [0.76]  3 PLACE .XXX: ± .010 [0.254]		<b>MTE</b> POWER QUALITY. SOLVED.  N83 W13330 Leon Road Menomonee Falls, WI 53051 USA 800.455.4683 262.253.8200		MATRIX AP 128A 240V 60Hz FILTER, NEMA 3R ENCL	
		DRAWN KV	DATE 08/16/18	SIZE D	DWG No. CD MAPW0128A
		CHECKED KV	DATE 10/09/18	SCALE 1:4	REV 00
		APPROVED JG	DATE 10/10/18	SHEET 1 OF 1	