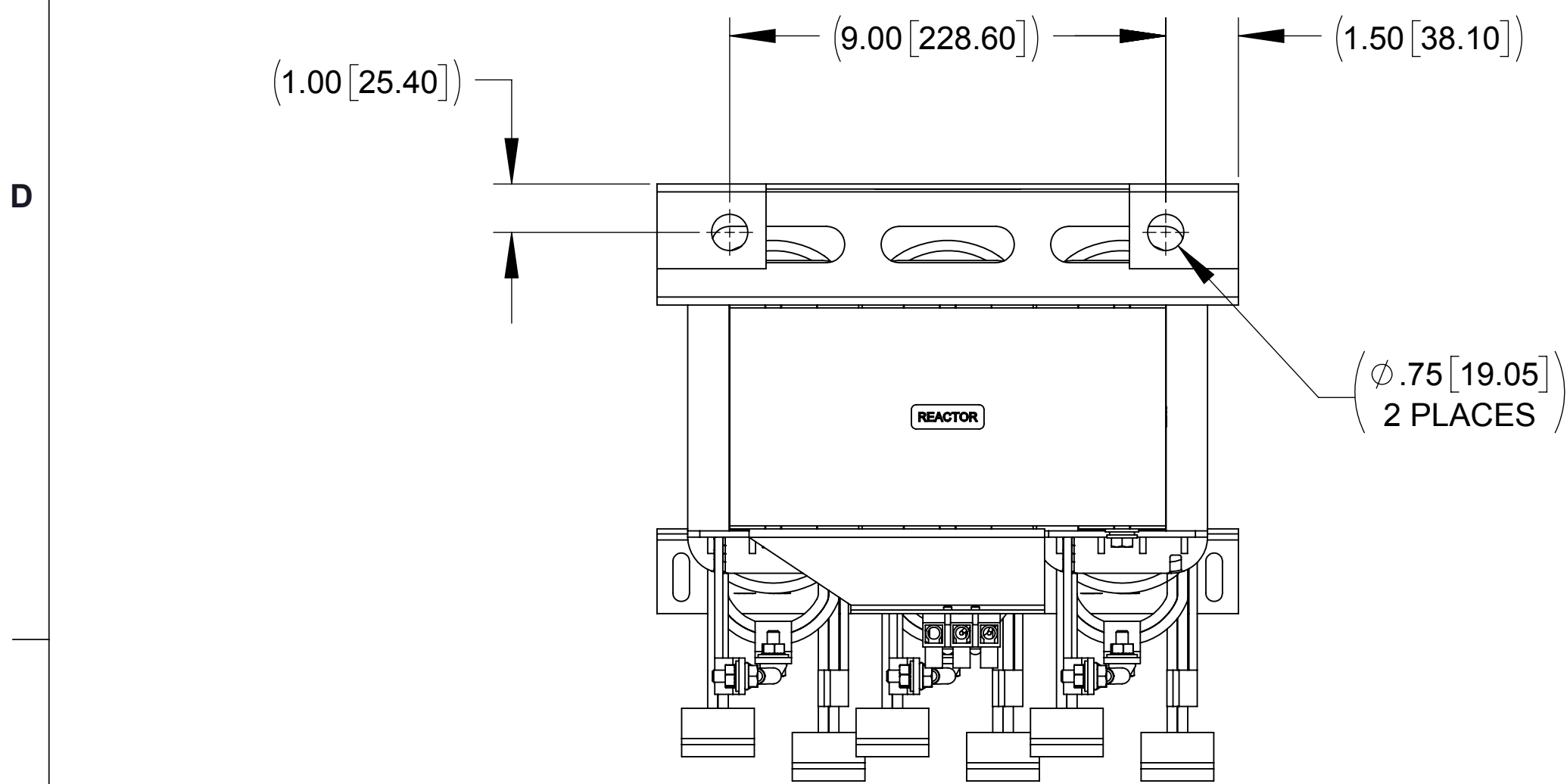
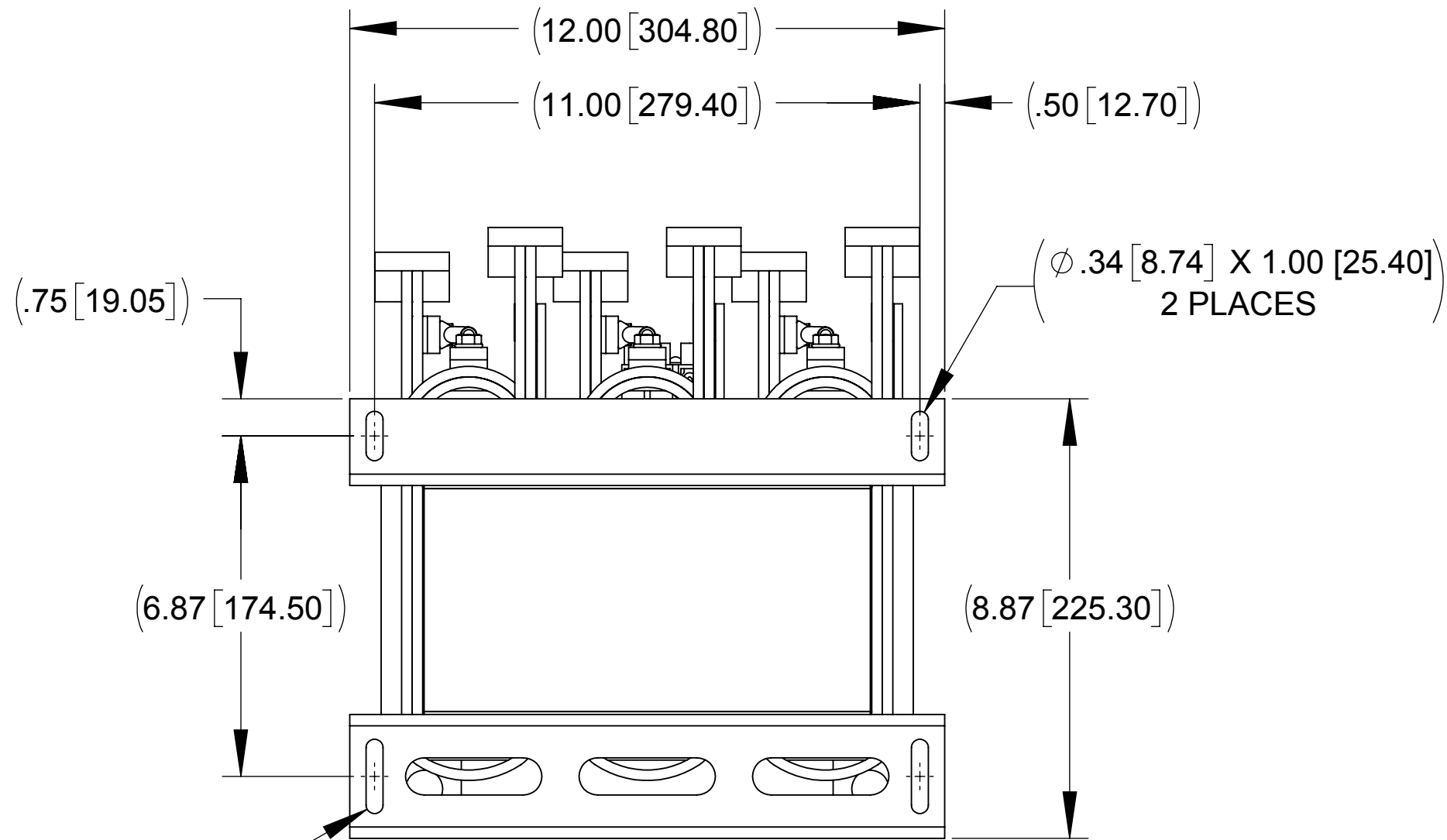


APPROX. WEIGHT (LBS)
156

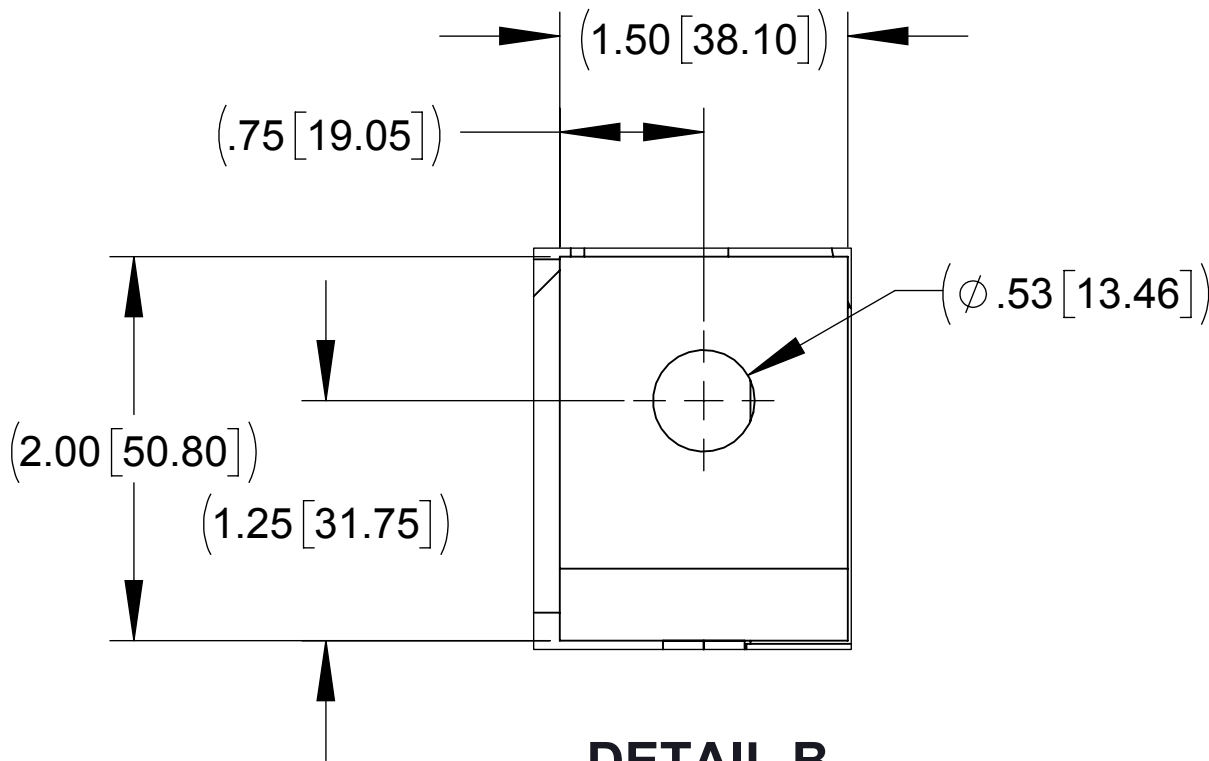
ECO No	DESCRIPTION	REV BY	DATE
M11944	UPDATE TO MODIFIED COIL	MN	08/26/19



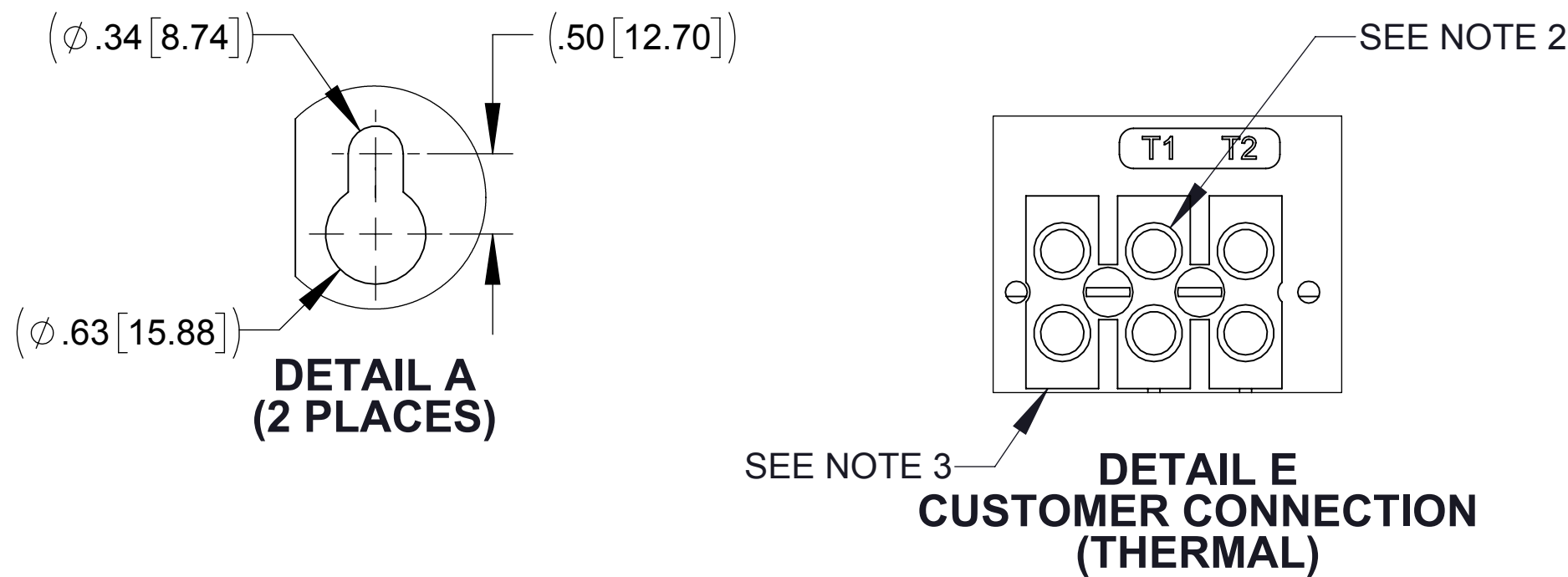
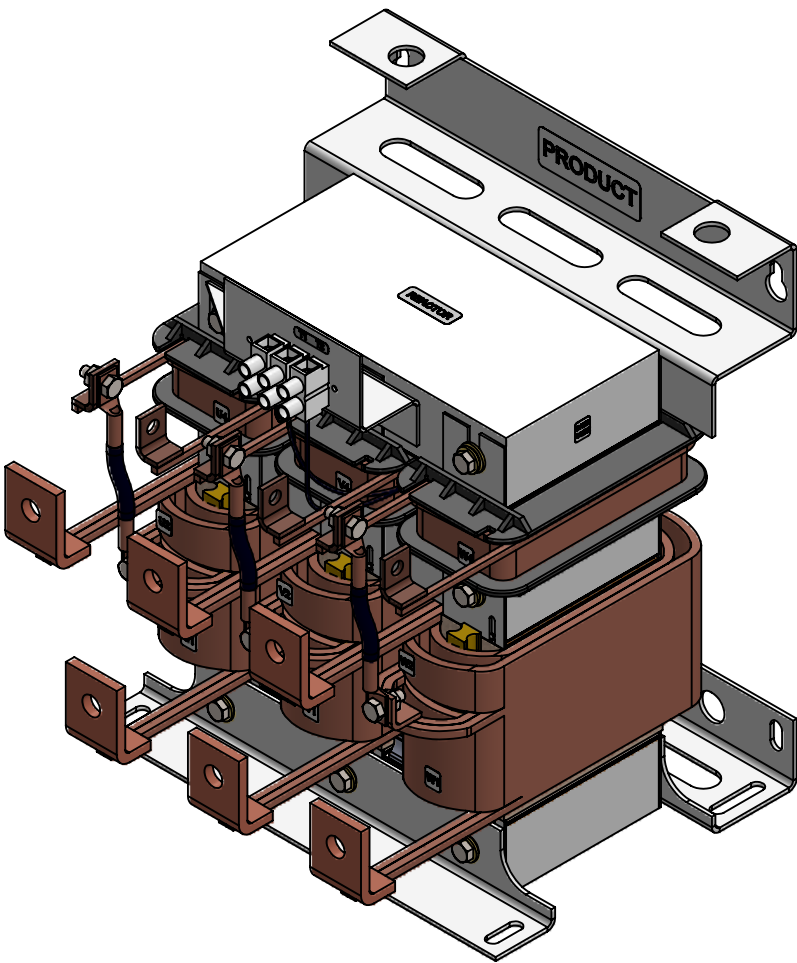
TOP VIEW



BOTTOM VIEW

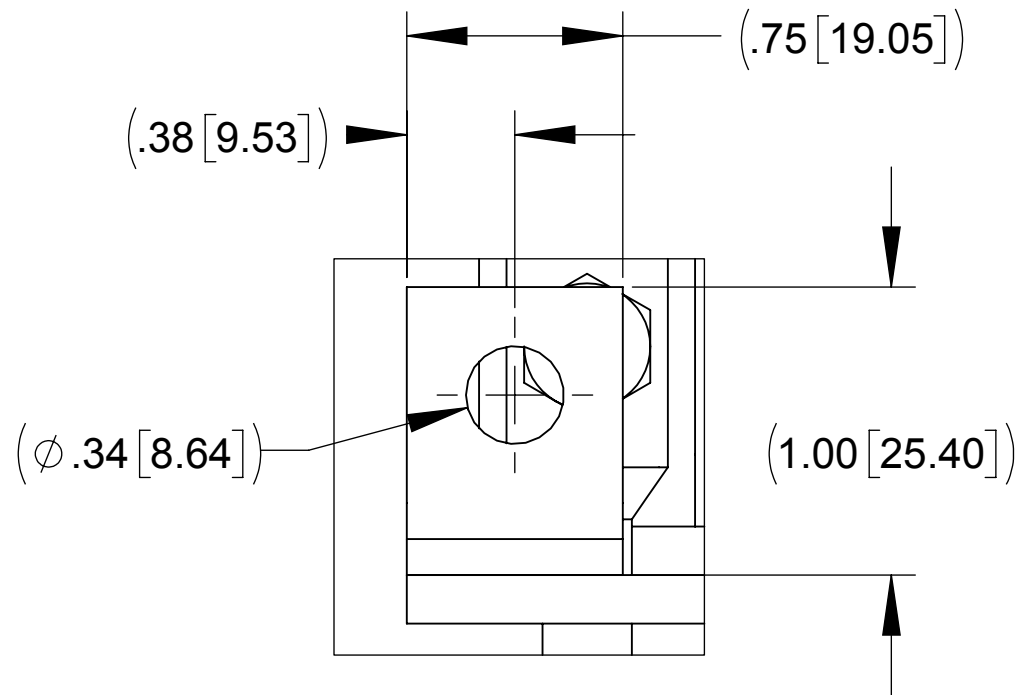


DETAIL B
(6 PLACES)

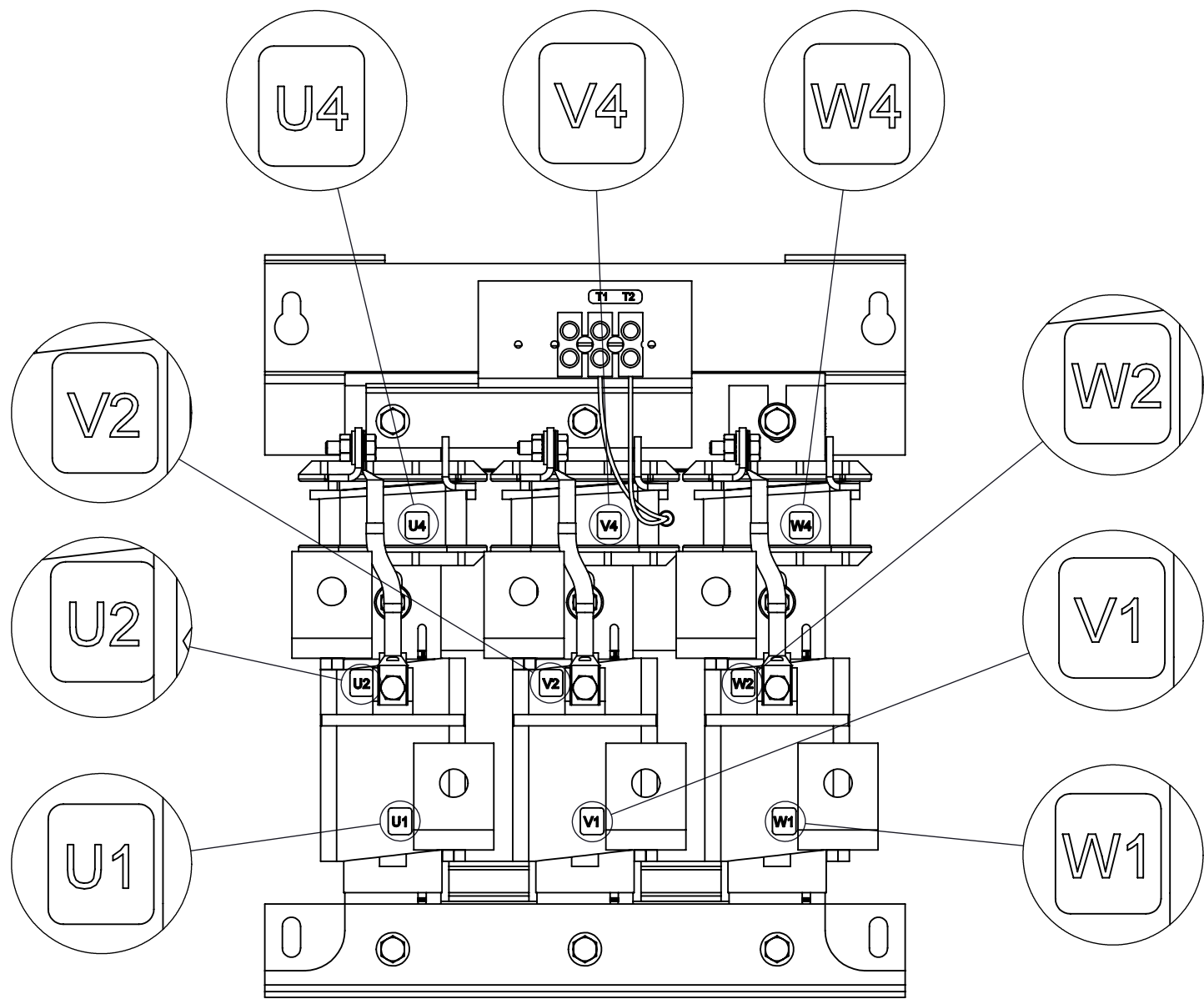


DETAIL A
(2 PLACES)

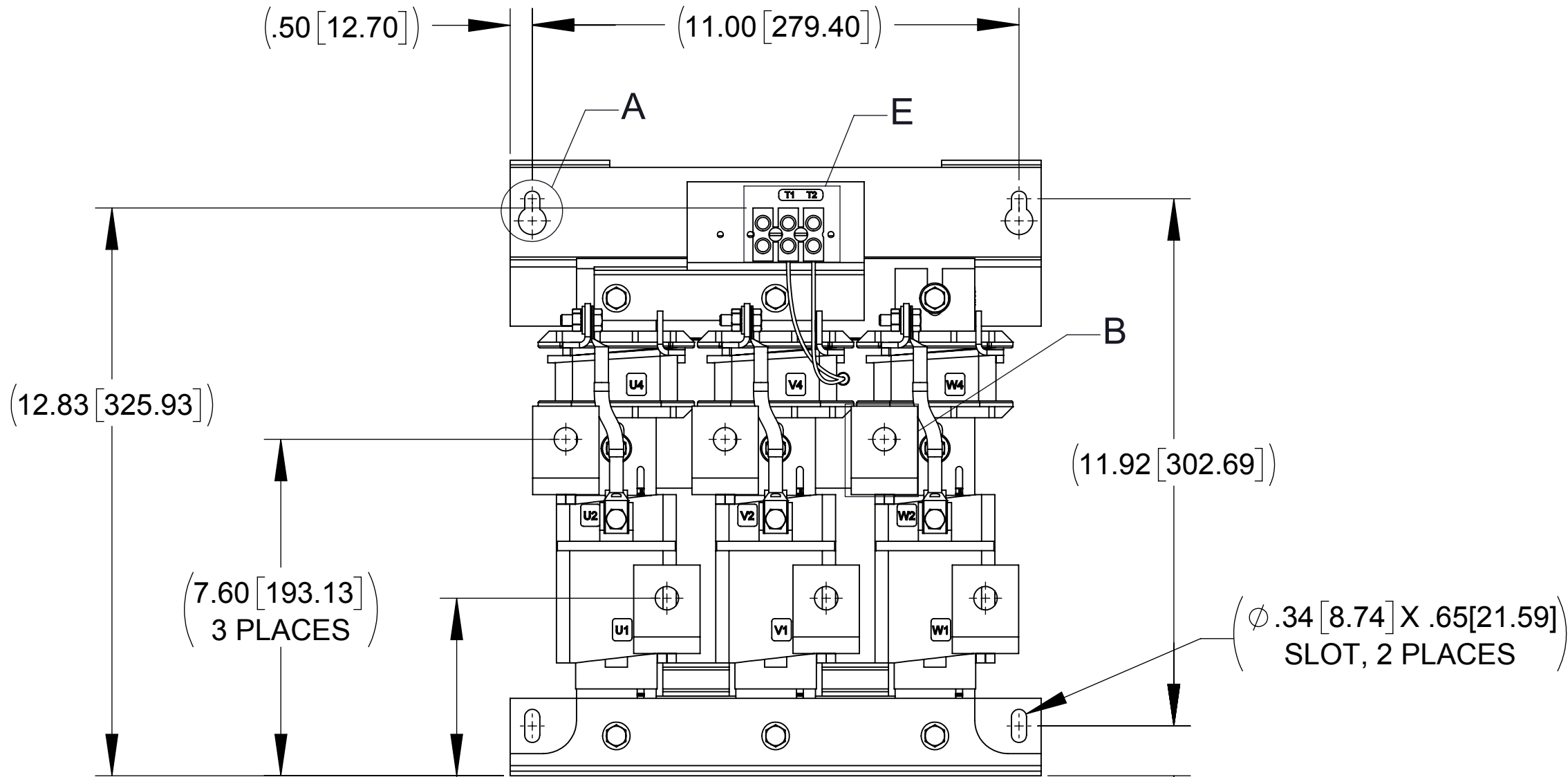
DETAIL E
CUSTOMER CONNECTION
(THERMAL)



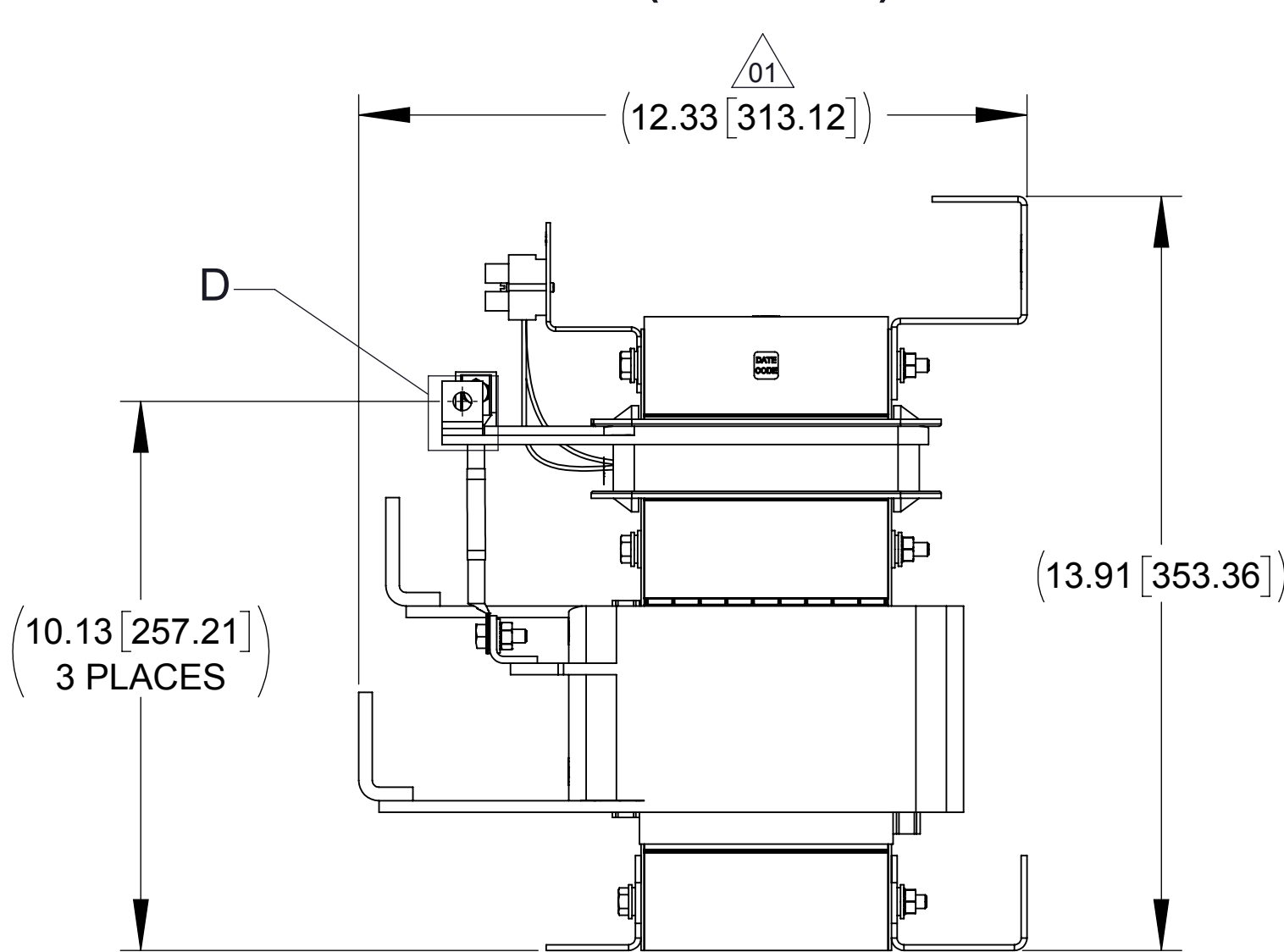
DETAIL D
(3 PLACES)



CUSTOMER CONNECTION
DETAIL VIEW



FRONT VIEW



SIDE VIEW

NOTES:

1. FILTER INCLUDES CAP-358TP (QTY. 1), CAP-376TP (QTY. 1).
2. TERMINAL SCREW TIGHTENING TORQUE: 16 IN/LBS.
3. WIRE RANGE: 4-14 AWG.

THE COMPONENT, PART OR ASSEMBLY DESCRIBED IN THIS DOCUMENT MUST COMPLY WITH THE EU(EUROPEAN UNION) DIRECTIVE RoHS2		MATERIAL		CONFIDENTIAL AND PROPRIETARY INFORMATION THIS DOCUMENT CONTAINS CONFIDENTIAL AND PROPRIETARY INFORMATION OF MTE CORPORATION AND MAY NOT BE USED, COPIED OR DISCLOSED TO OTHERS EXCEPT WITH THE AUTHORIZED WRITTEN PERMISSION OF MTE CORPORATION	
CONTAINS <0.1% OF ANY SVHC BY WEIGHT PER REACH REGULATION				DESCRIPTION	
UNLESS OTHERWISE SPECIFIED DIMENSIONS ARE IN INCHES [MM] TOLERANCES ARE: ANGLES: $\pm 1^\circ$ 1 PLACE .X: $\pm .1 [2.5]$ 2 PLACE .XX: $\pm .03 [0.76]$ 3 PLACE .XXX: $\pm .010 [0.254]$		MTE POWER QUALITY. SOLVED. N83 W13330 Leon Road Menomonee Falls, WI 53051 USA 800.455-4683 262.253-8200		MATRIX AP 165A 240V 60Hz OPEN PANEL	
		DRAWN KV	DATE 04/20/18	SIZE D	REV 01
		CHECKED MN	DATE 08/26/19	DWG No. CD MAPP0165A	
		APPROVED PY	DATE 09/04/19	SCALE 1:3	SHEET 1 OF 1