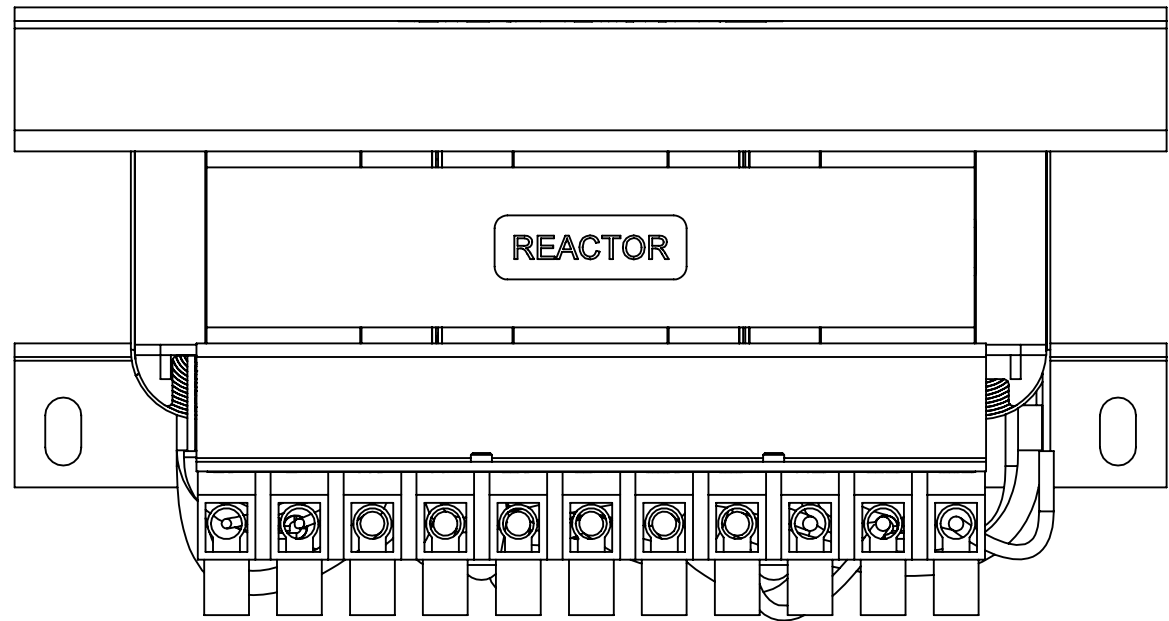
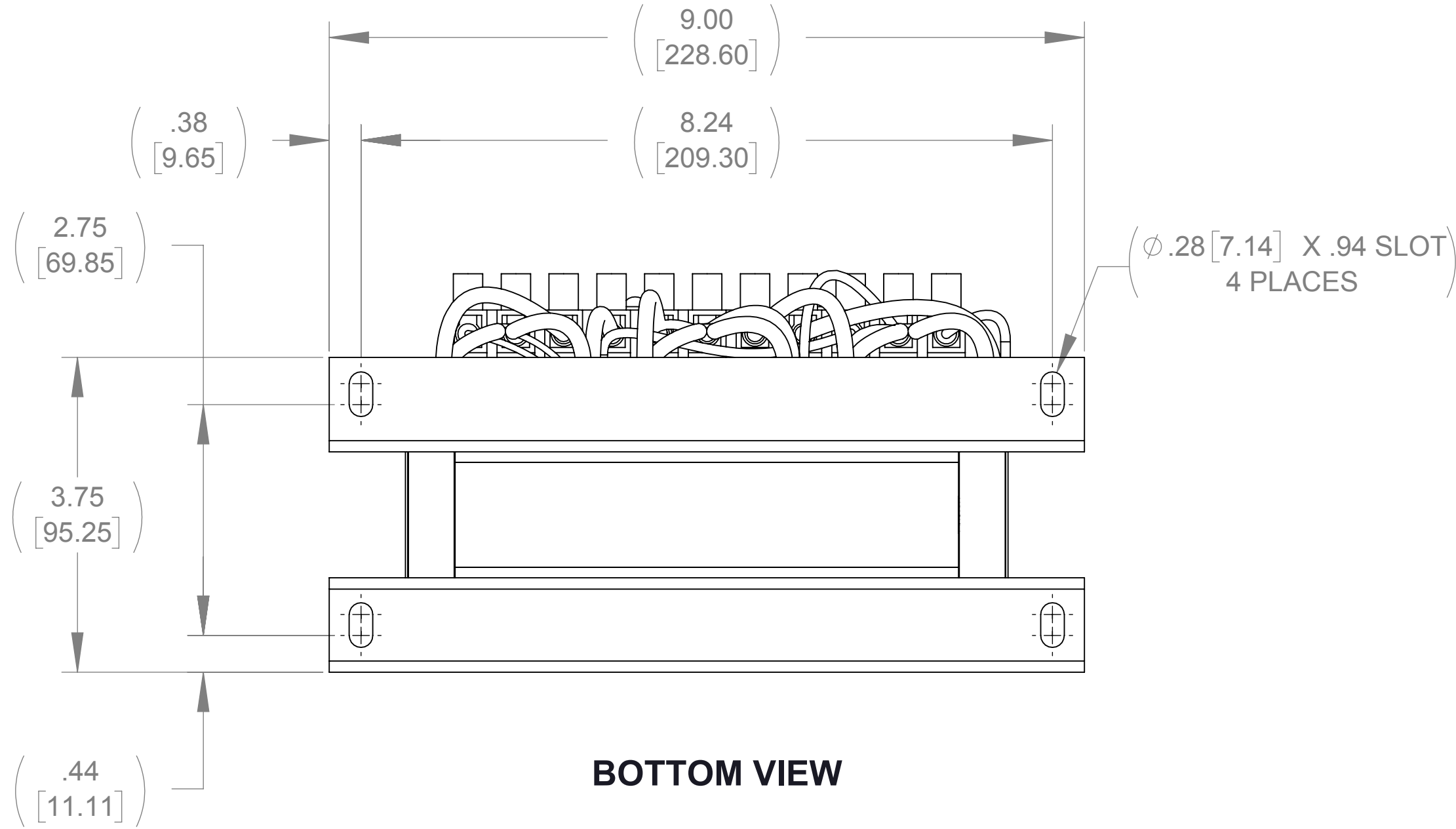


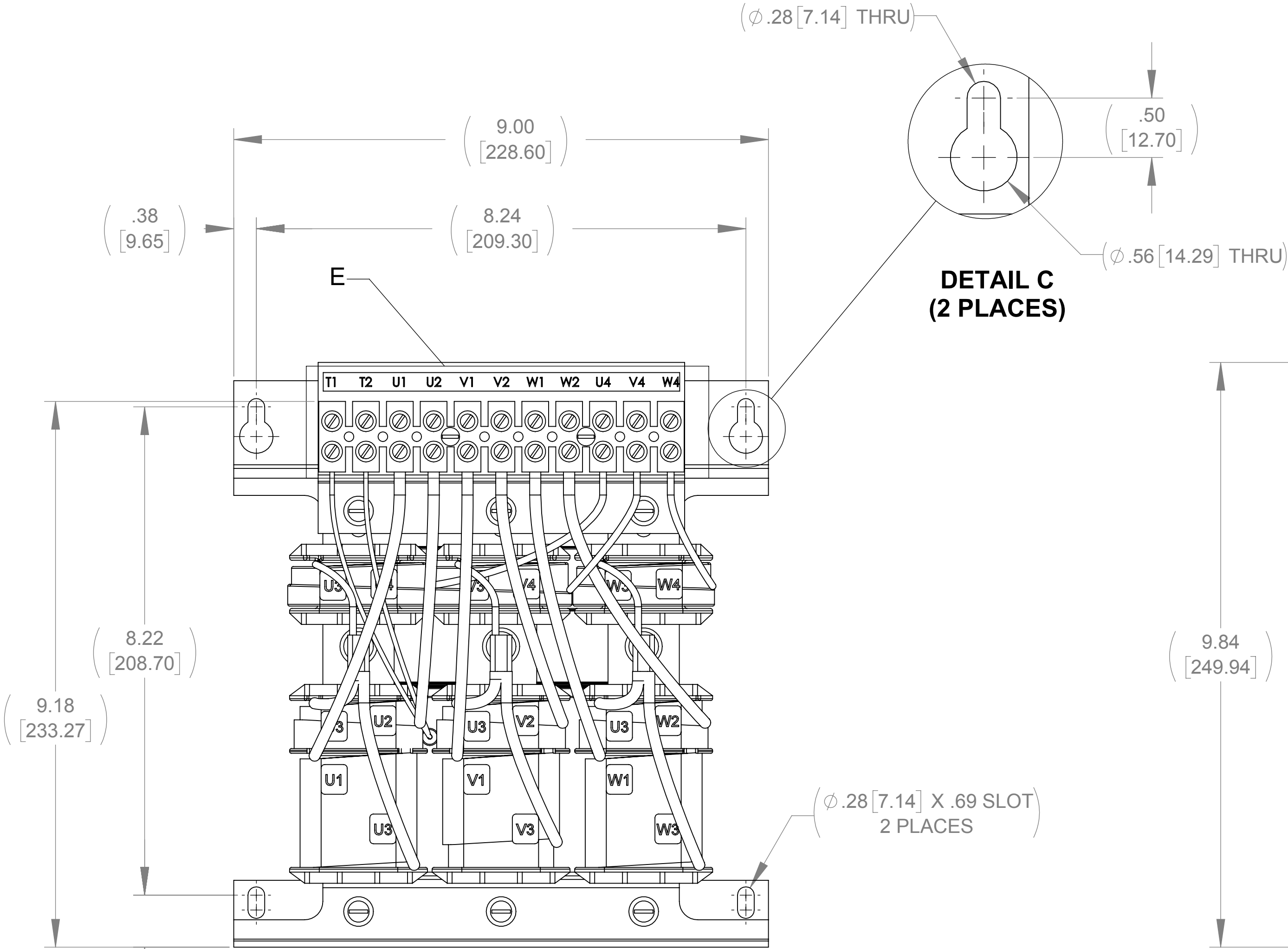
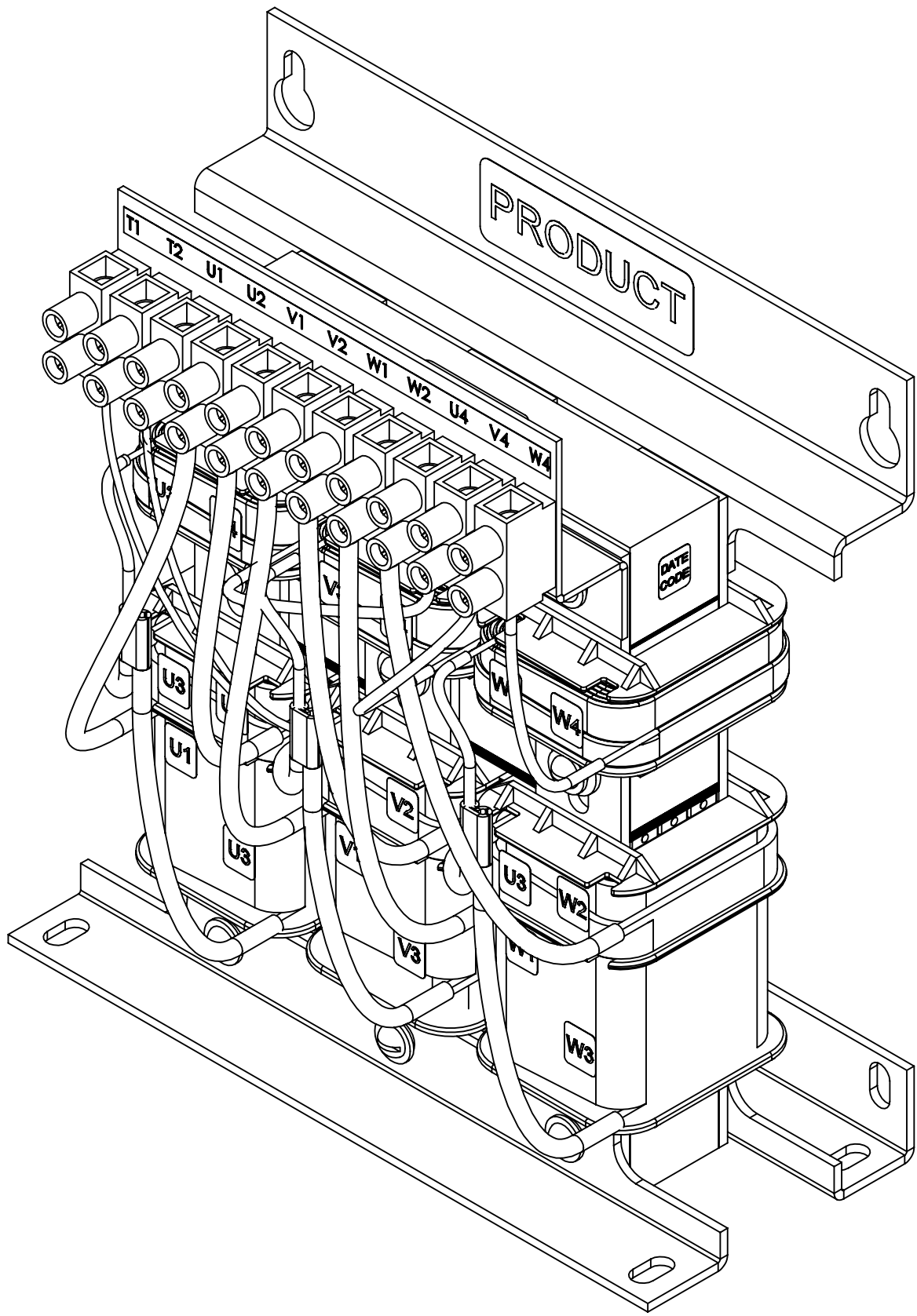
APPROX. WEIGHT  
(LBS)  
30



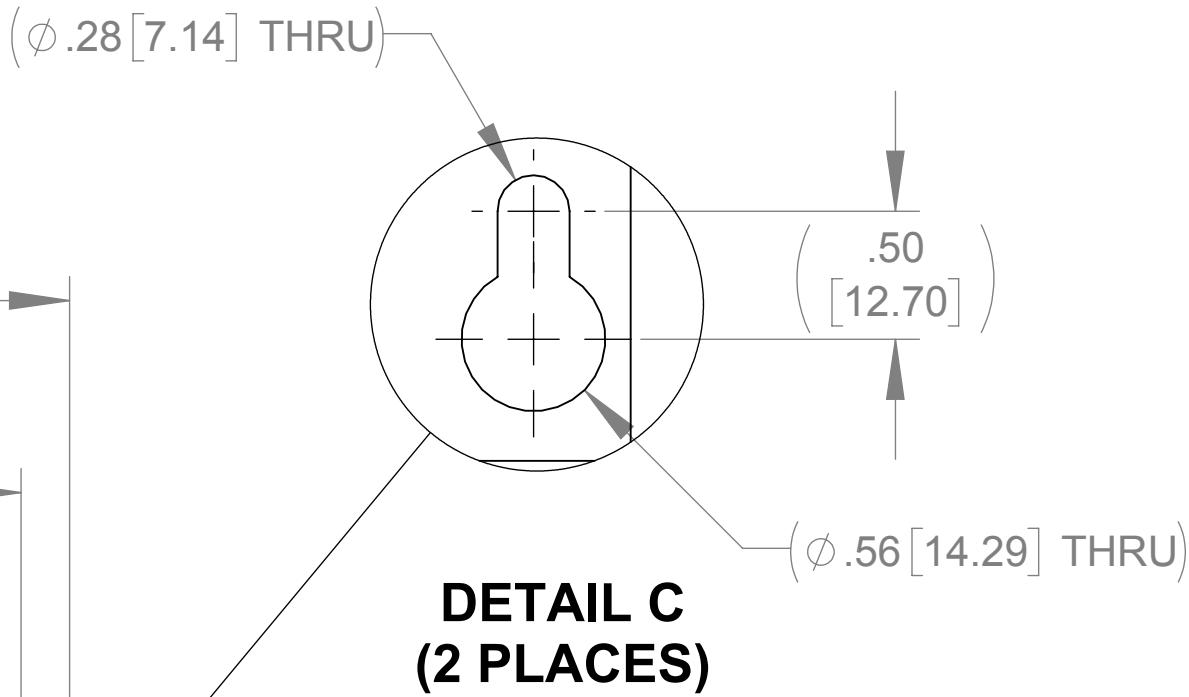
TOP VIEW



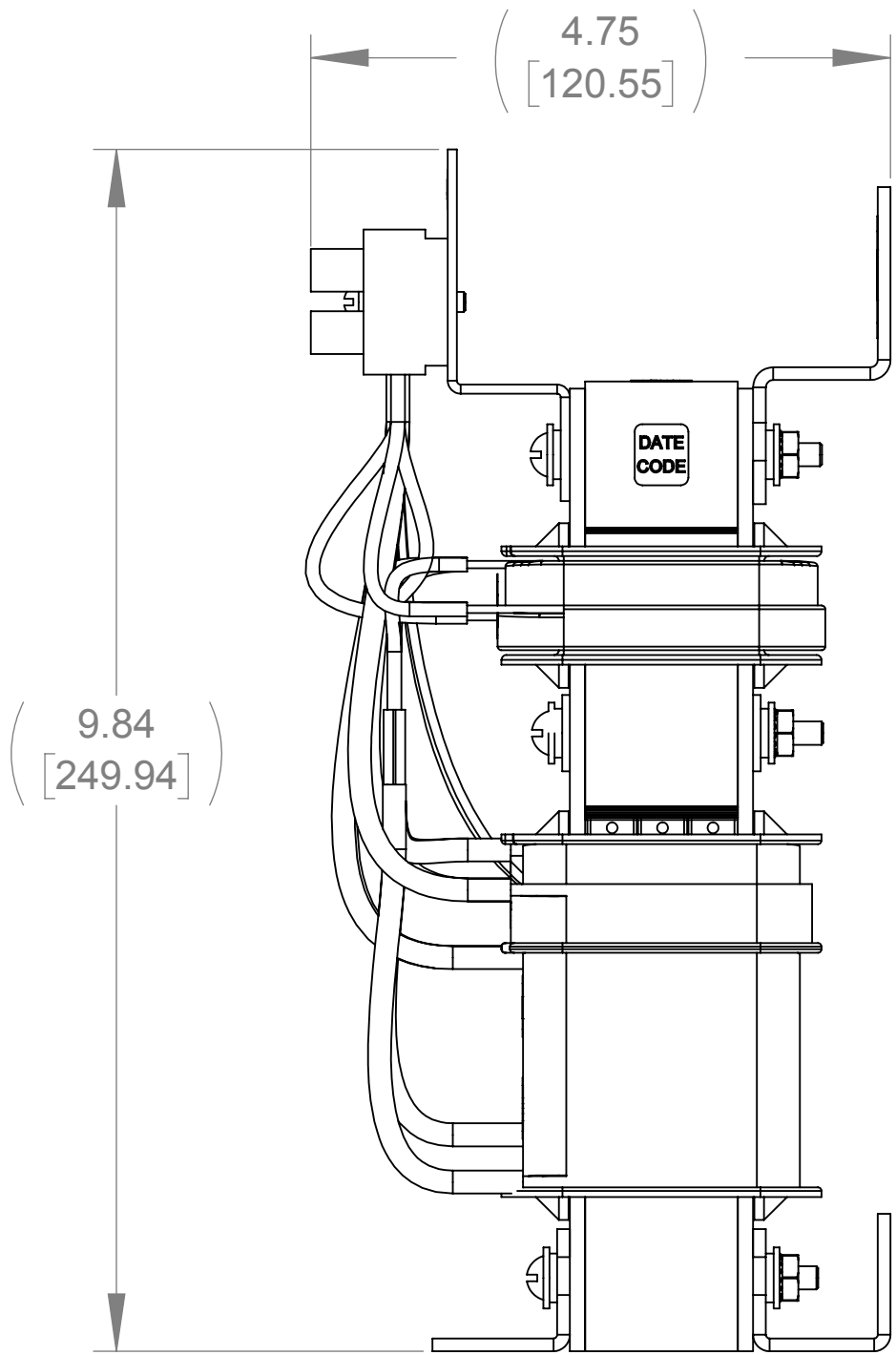
BOTTOM VIEW



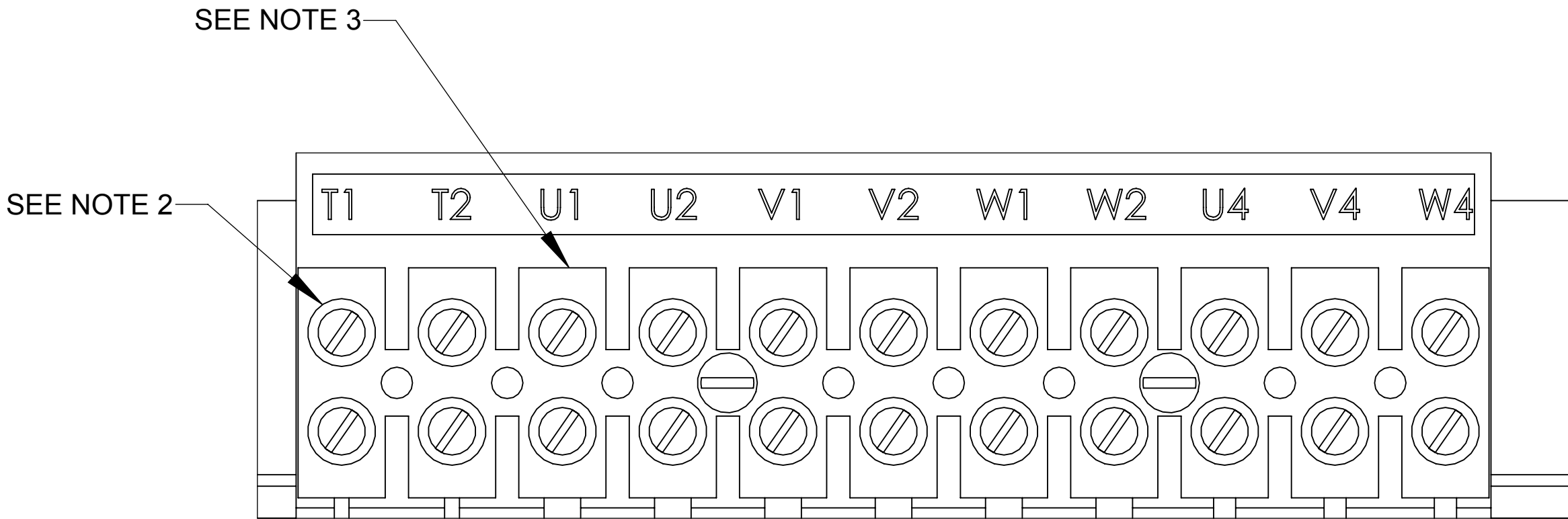
FRONT VIEW



DETAIL C  
(2 PLACES)




SIDE VIEW



DETAIL E  
CUSTOMER CONNECTION  
DETAIL VIEW

NOTES:

1. FILTER REQUIRES CAP-369TP (QTY. 1)
2. TERMINAL SCREW TIGHTENING TORQUE: 16 IN/LBS
3. WIRE RANGE: 4-14 AWG.

THE COMPONENT, PART OR ASSEMBLY DESCRIBED IN THIS DOCUMENT MUST COMPLY WITH THE EU(EUROPEAN UNION) DIRECTIVE RoHS2			MATERIAL		CONFIDENTIAL AND PROPRIETARY INFORMATION THIS DOCUMENT CONTAINS CONFIDENTIAL AND PROPRIETARY INFORMATION OF MTE CORPORATION AND MAY NOT BE USED, COPIED OR DISCLOSED TO OTHERS EXCEPT WITH THE AUTHORIZED WRITTEN PERMISSION OF MTE CORPORATION			
CONTAINS <0.1% OF ANY SVHC BY WEIGHT PER REACH REGULATION					DESCRIPTION			
<div>UNLESS OTHERWISE SPECIFIED DIMENSIONS ARE IN INCHES [MM] TOLERANCES ARE:</div> <div>ANGLES: ± 1 °</div> <div>1 PLACE .X: ± .1 [2.5]</div> <div>2 PLACE .XX: ± .03 [0.76]</div> <div>3 PLACE .XXX: ± .010 [0.254]</div>		<div> <b>POWER QUALITY. SOLVED.</b></div> <div>N83 W13330 Leon Road Menomonee Falls, WI 53051 USA 800.455-4683 262.253.8200</div>	DRAWN	DATE	MATRIX AP 21A 240V 60Hz OPEN PANEL			REV
			KV	09/04/18				
			CHECKED	DATE				
			KV	09/04/18				
			APPROVED	DATE	SIZE	DWG No.		
			AK	10/03/18	D	CD MAPP0021A	00	
					SCALE	2:3		SHEET 1 OF 1