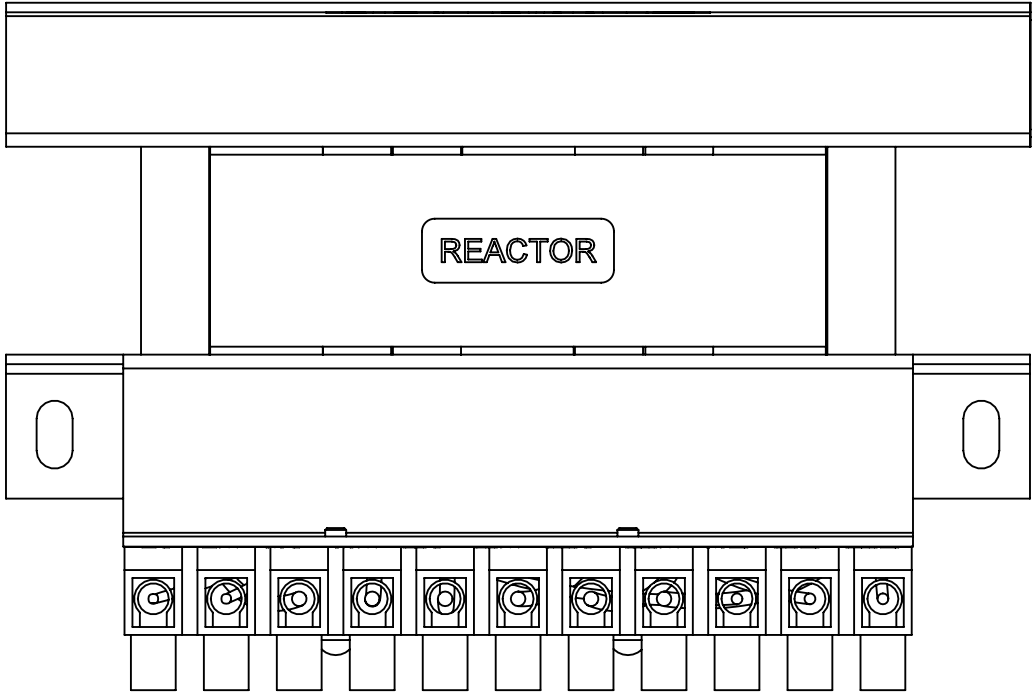
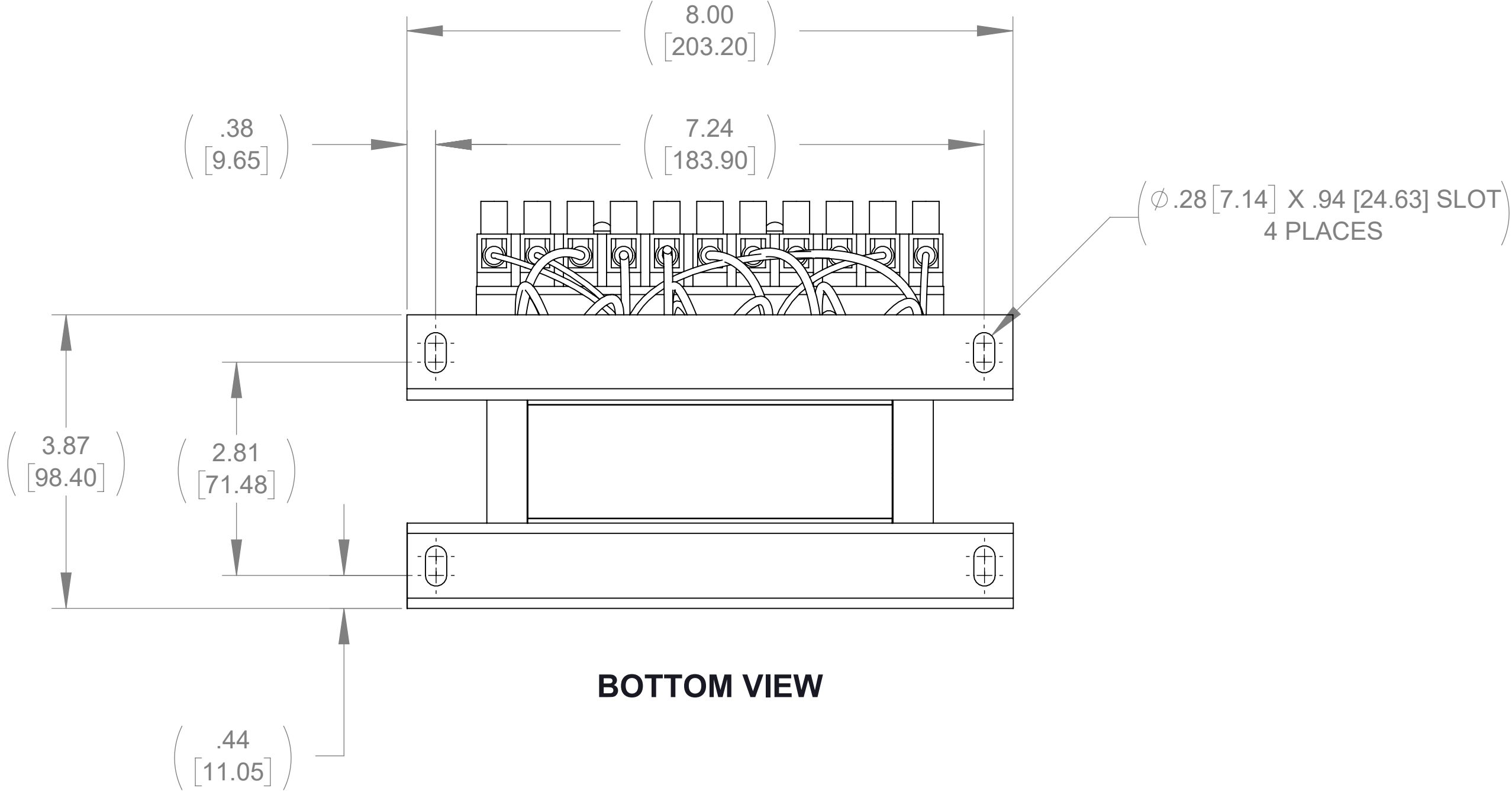


APPROX. WEIGHT  
(LBS)  
21

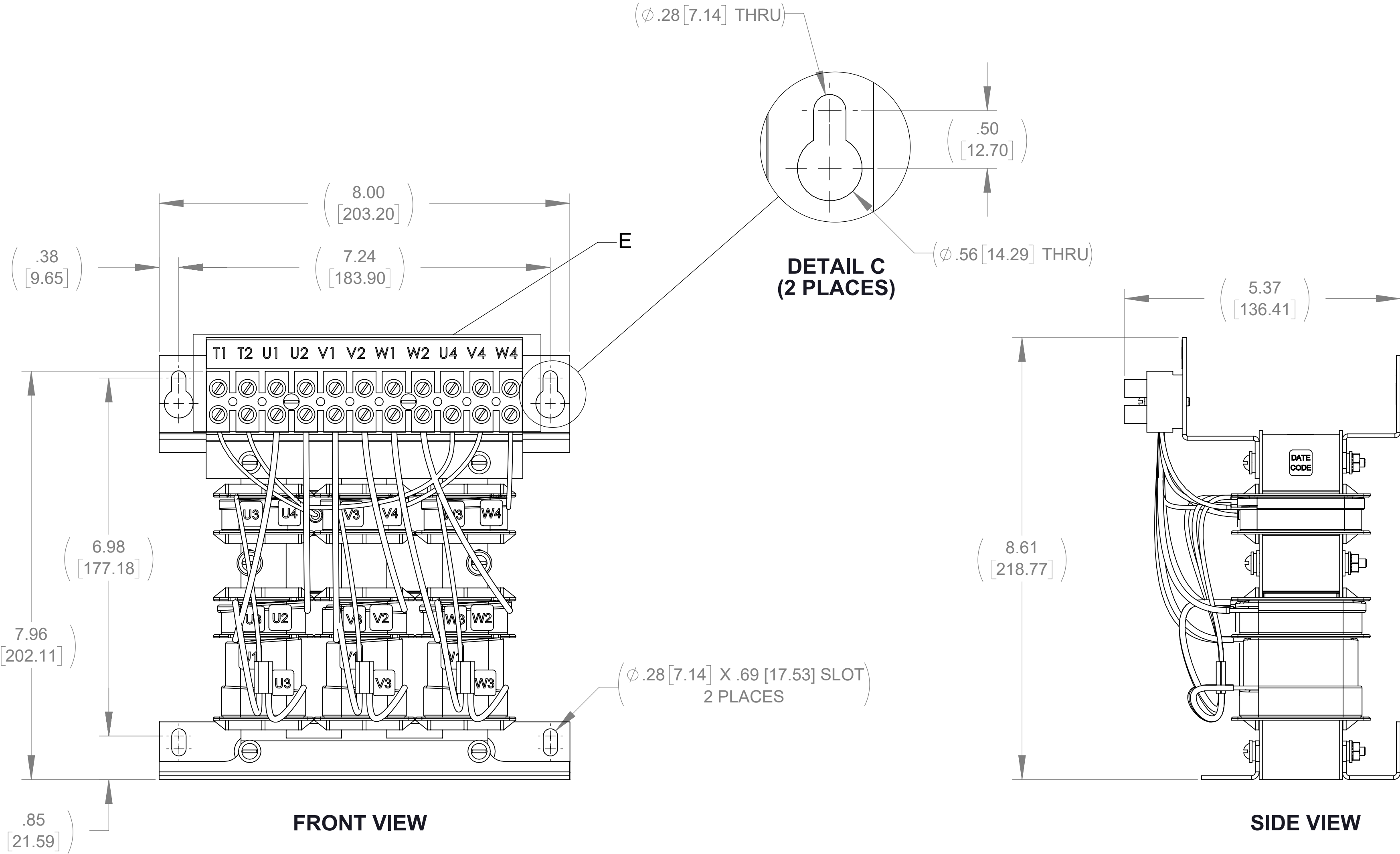
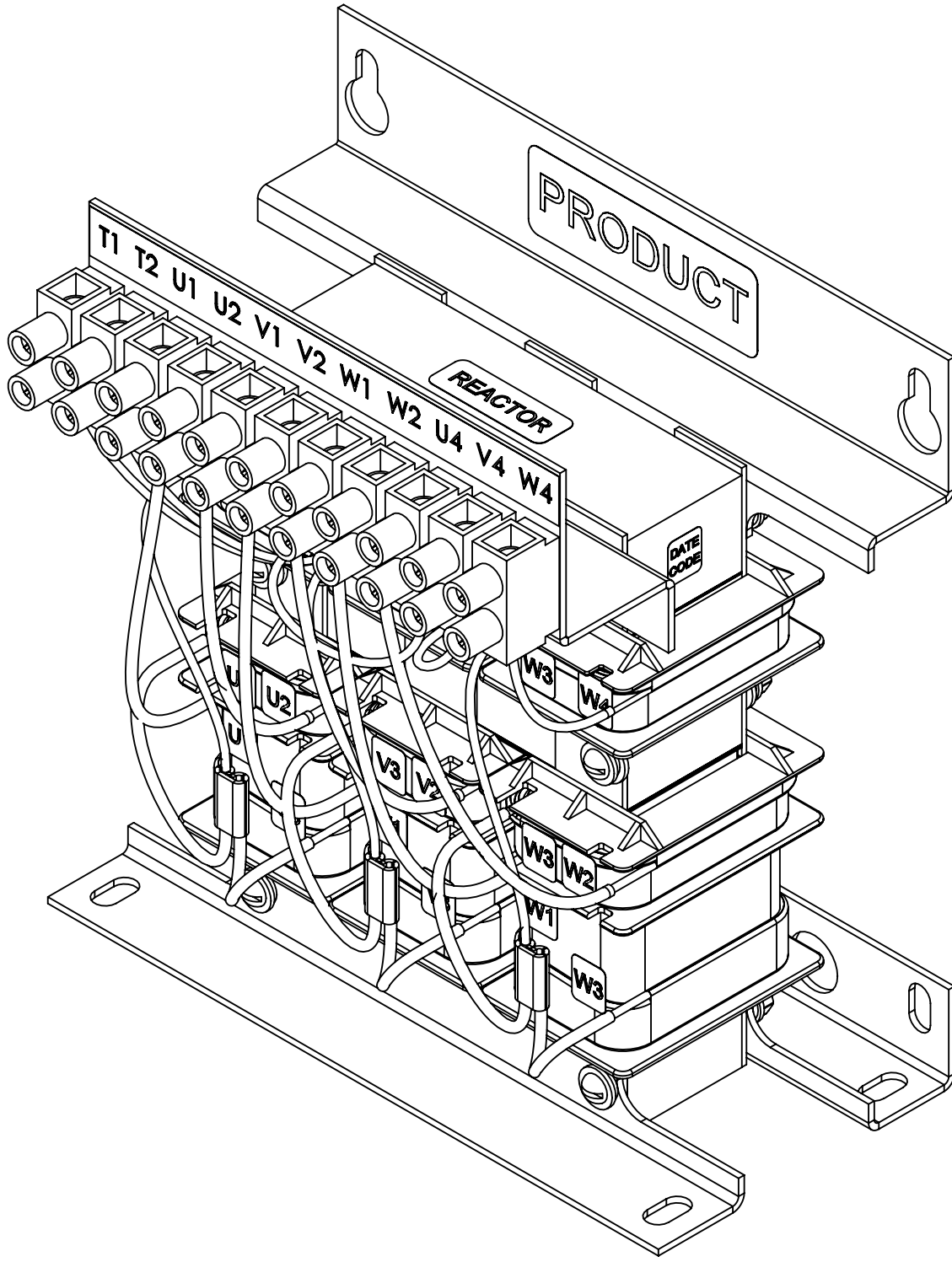
| ECO No | DESCRIPTION | REV BY | DATE |
|--------|-------------|--------|------|
|        |             |        |      |



TOP VIEW

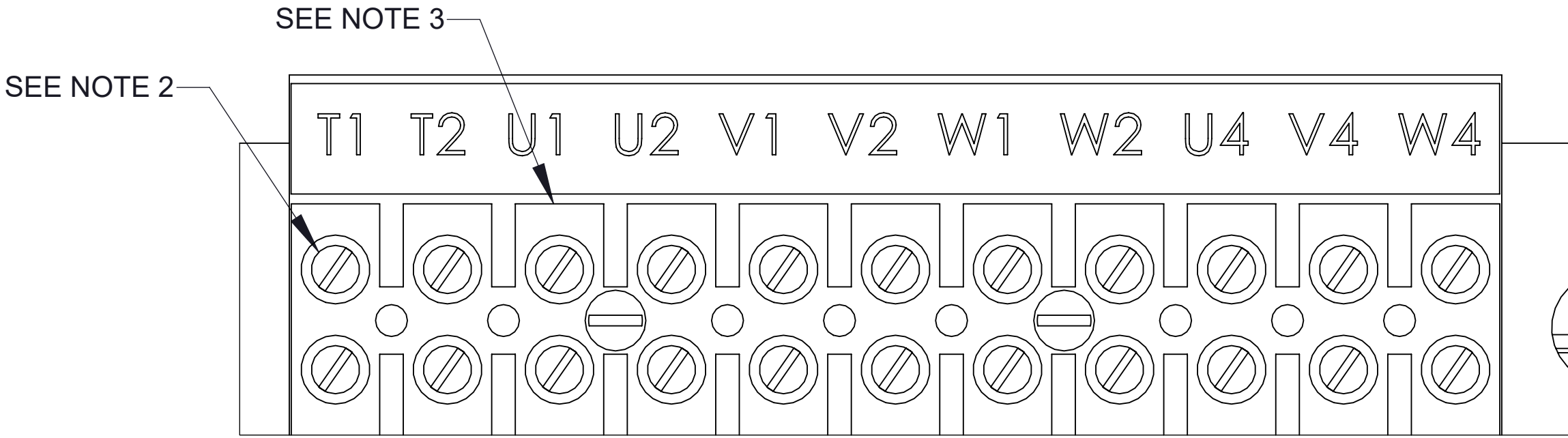


BOTTOM VIEW




FRONT VIEW

SIDE VIEW



DETAIL E  
CUSTOMER CONNECTION  
DETAIL VIEW

- NOTES:
1. FILTER REQUIRES CAP-342TP (QTY. 1)
  2. TERMINAL SCREW TIGHTENING TORQUE: 16 IN/LBS
  3. WIRE RANGE: 4-14 AWG.

|   |  |   |          |  |         |              |  |
|---|--|---|----------|--|---------|--------------|--|
| THE COMPONENT, PART OR ASSEMBLY DESCRIBED IN THIS DOCUMENT<br>MUST COMPLY WITH THE EU(EUROPEAN UNION) DIRECTIVE RoHS2   |  | MATERIAL  |          | CONFIDENTIAL AND PROPRIETARY INFORMATION<br>THIS DOCUMENT CONTAINS CONFIDENTIAL AND PROPRIETARY INFORMATION OF MTE CORPORATION AND MAY NOT BE USED, COPIED OR DISCLOSED TO OTHERS EXCEPT WITH THE AUTHORIZED WRITTEN PERMISSION OF MTE CORPORATION |         |              |  |
| CONTAINS <0.1% OF ANY SVHC BY WEIGHT PER REACH REGULATION   |  |   |          | DESCRIPTION  |         |              |  |
| <div>UNLESS OTHERWISE SPECIFIED<br/>DIMENSIONS ARE IN INCHES [MM]<br/>TOLERANCES ARE:</div> <div>ANGLES: ± 1 °</div> <div>1 PLACE .X: ± .1 [2.5]</div> <div>2 PLACE .XX: ± .03 [0.76]</div> <div>3 PLACE .XXX: ± .010 [0.254]</div> |  | <div><div>N83 W13330 Leon Road<br/>Menomonee Falls, WI 53051 USA<br/>800.455-4683<br/>262.253-8200</div></div> |          | MATRIX AP 14A 240V 60Hz<br>OPEN PANEL  |         |              |  |
|   |  | DRAWN   | DATE     | SIZE   | DWG No. | REV          |  |
|   |  | KV  | 03/12/18 |  |         |              |  |
|   |  | CHECKED   | DATE     | SCALE  | 2:3     | SHEET 1 OF 1 |  |
|   |  | KV  | 03/12/18 |  |         |              |  |
|   |  | APPROVED  | DATE     | CD MAPP0014A   |         |              |  |
|   |  | AK  | 10/03/18 | 00   |         |              |  |