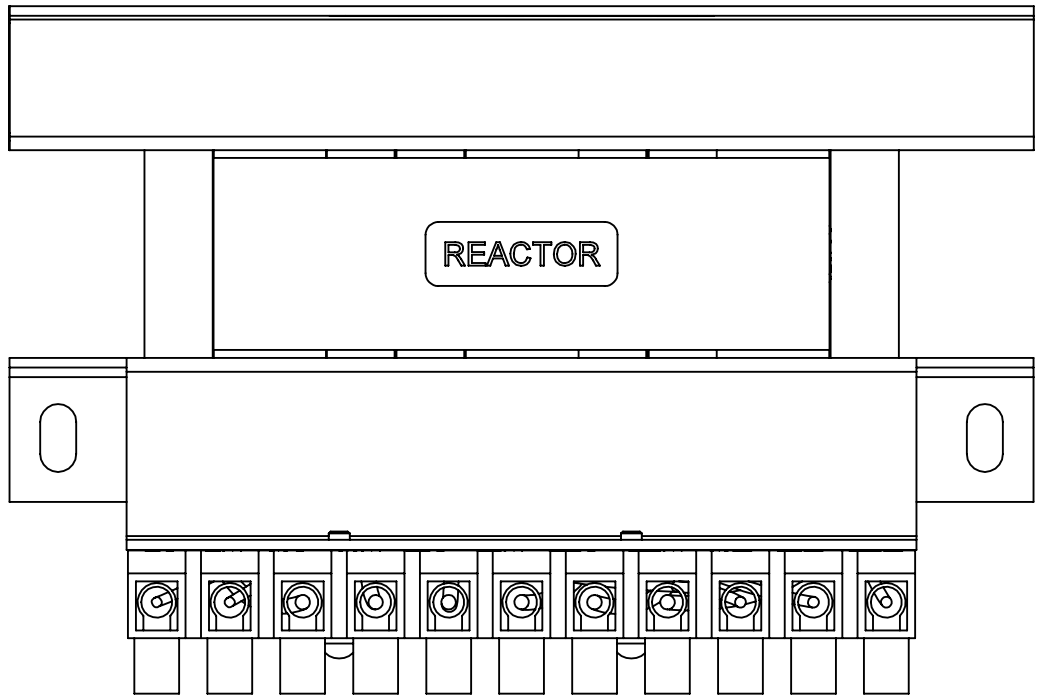
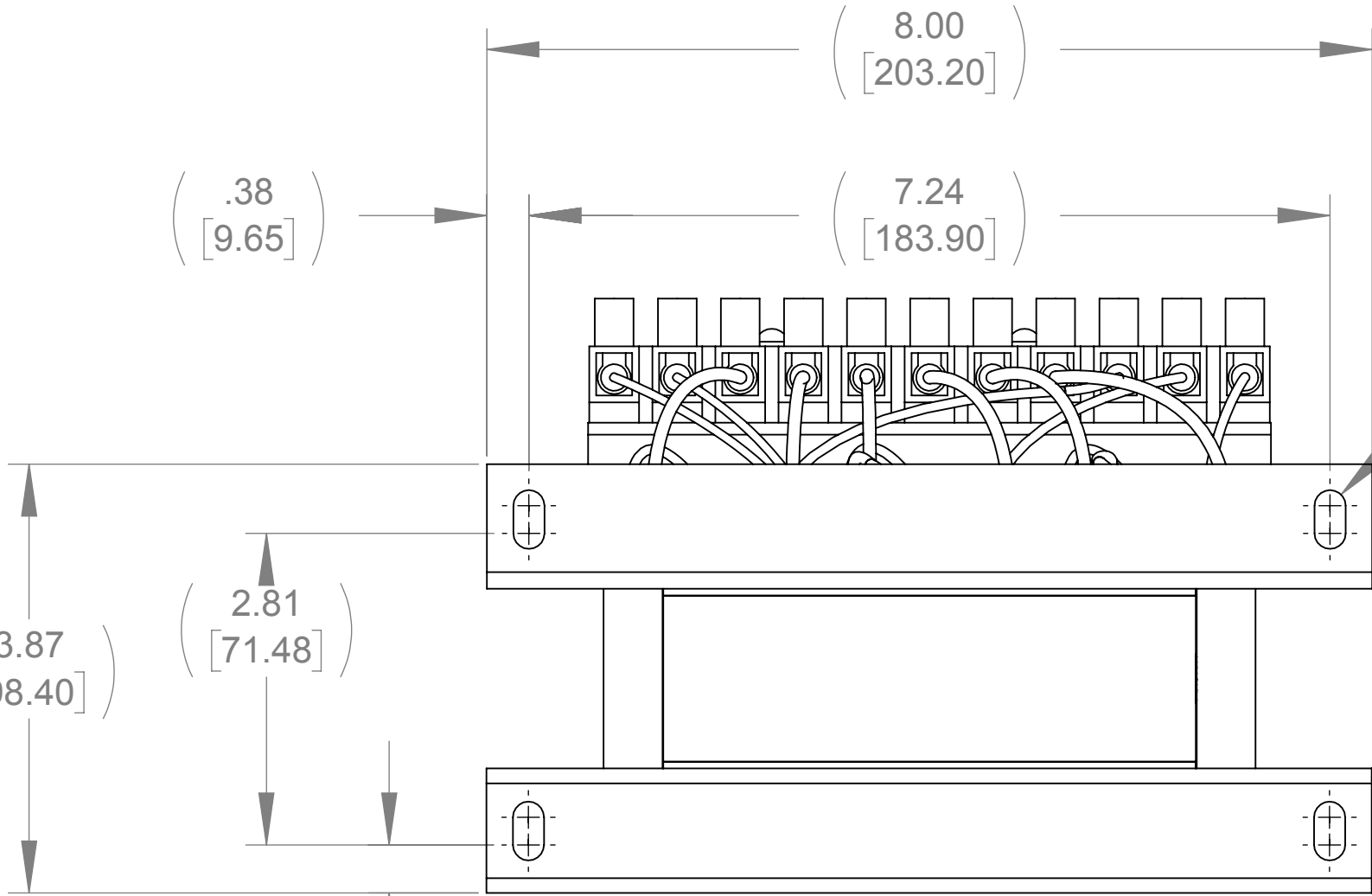


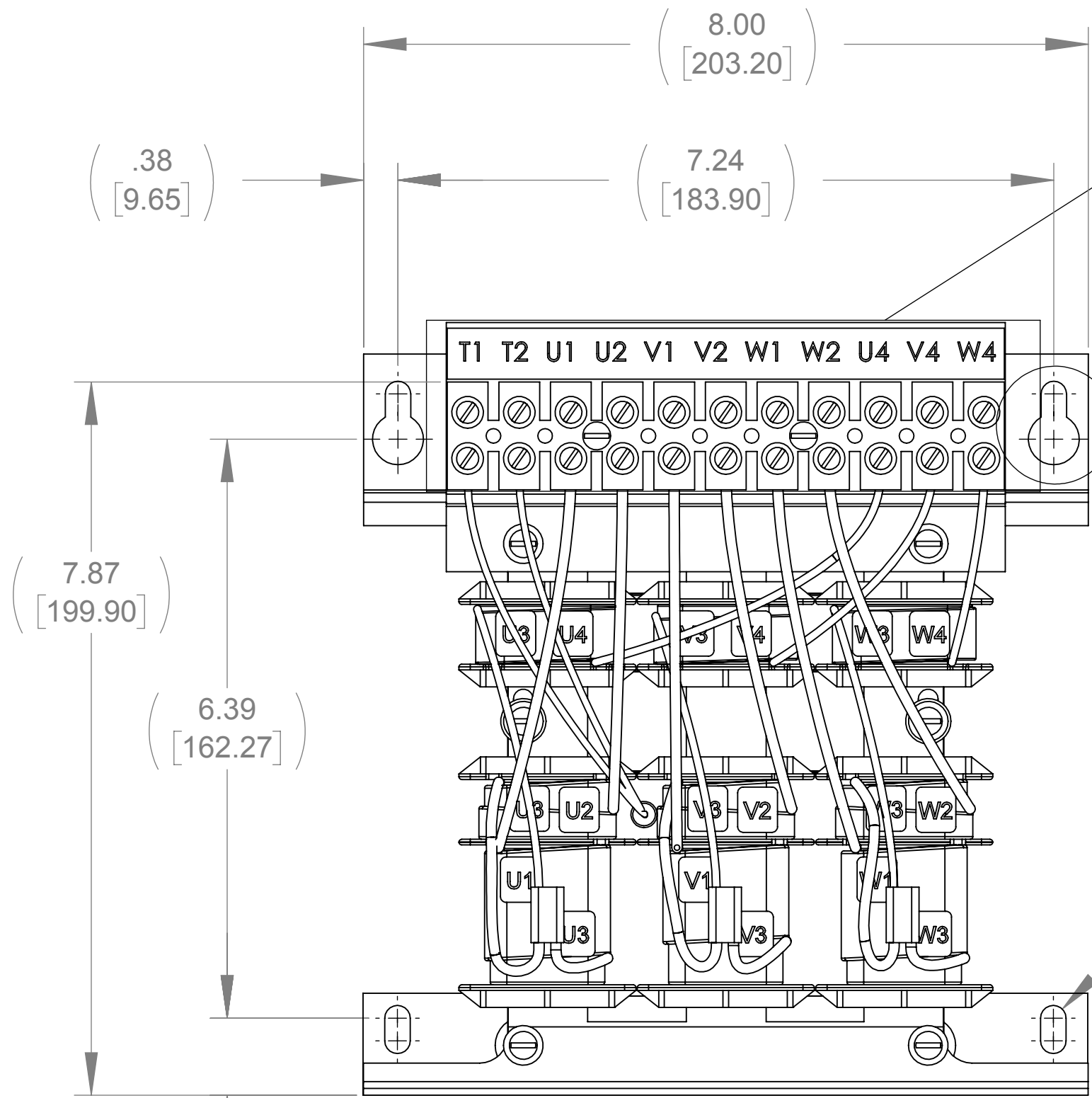
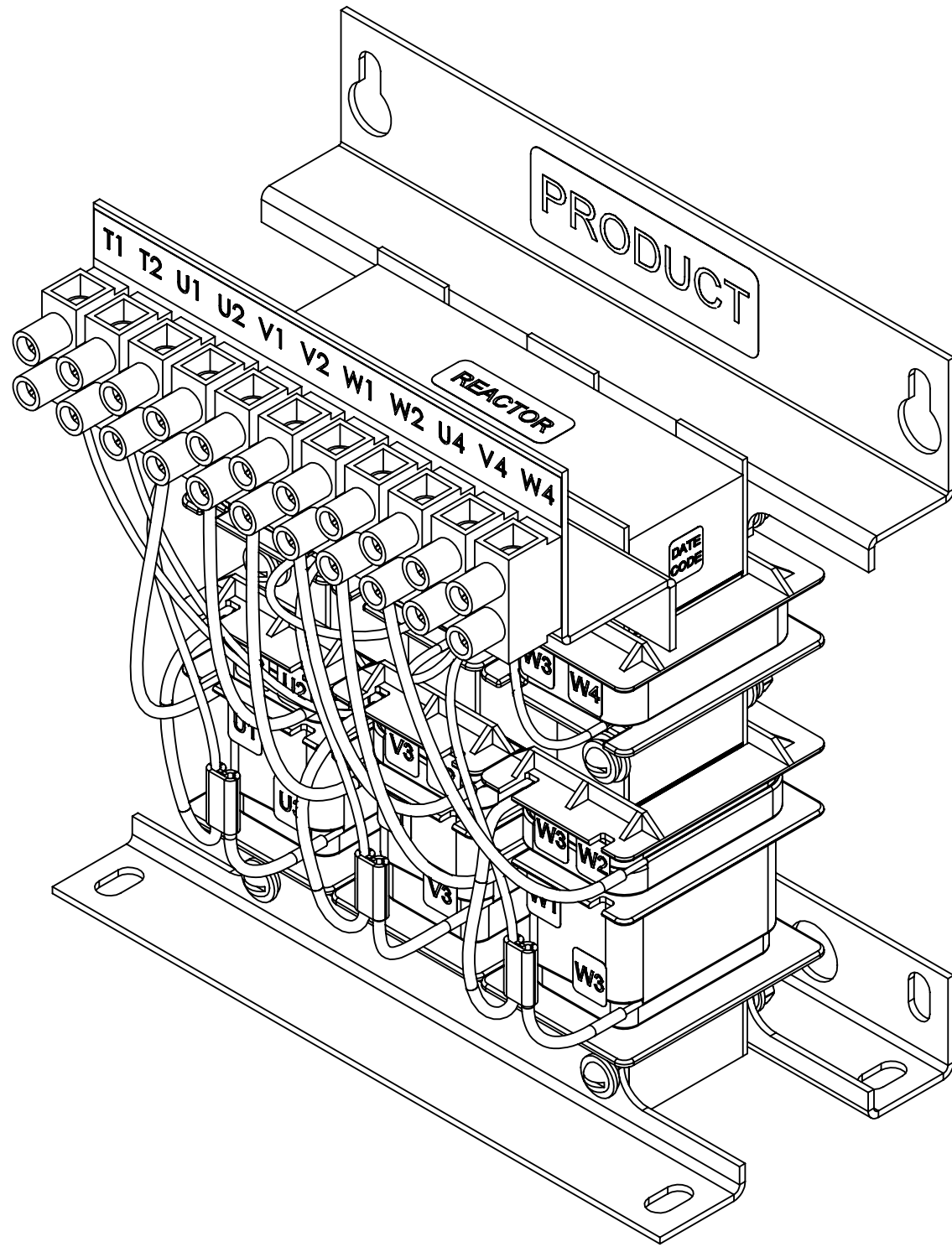
APPROX. WEIGHT
(LBS)
19



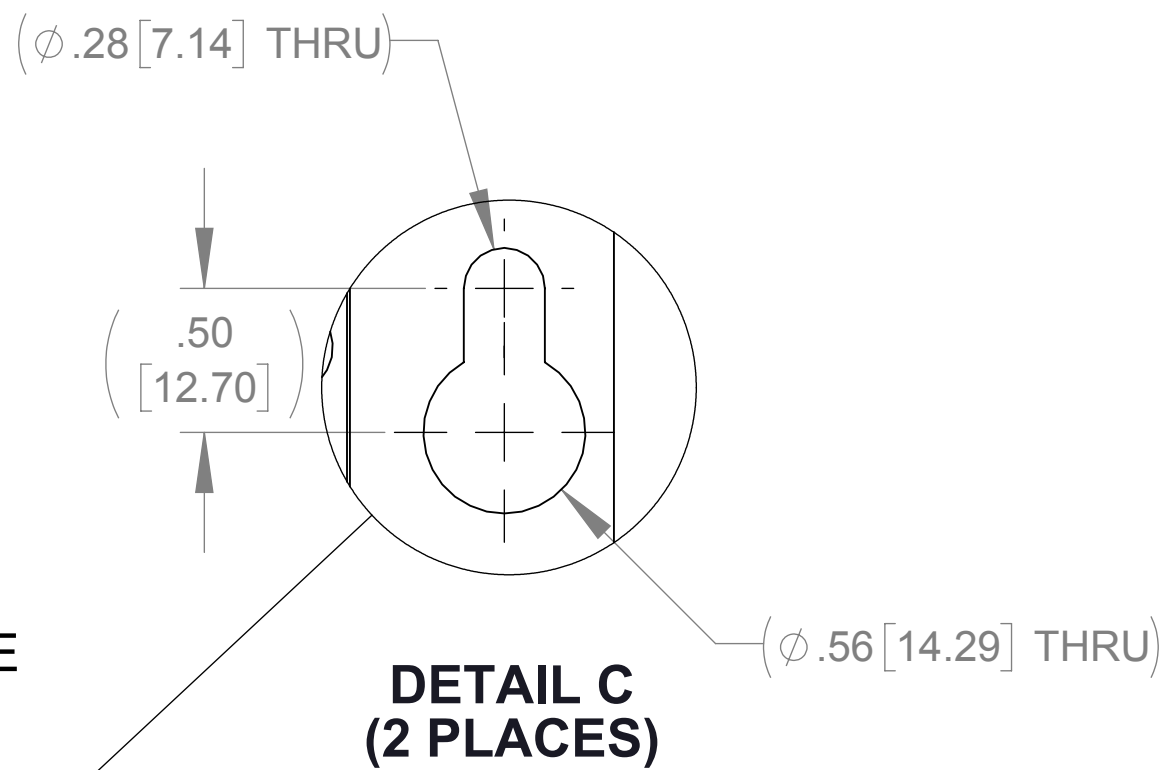
TOP VIEW



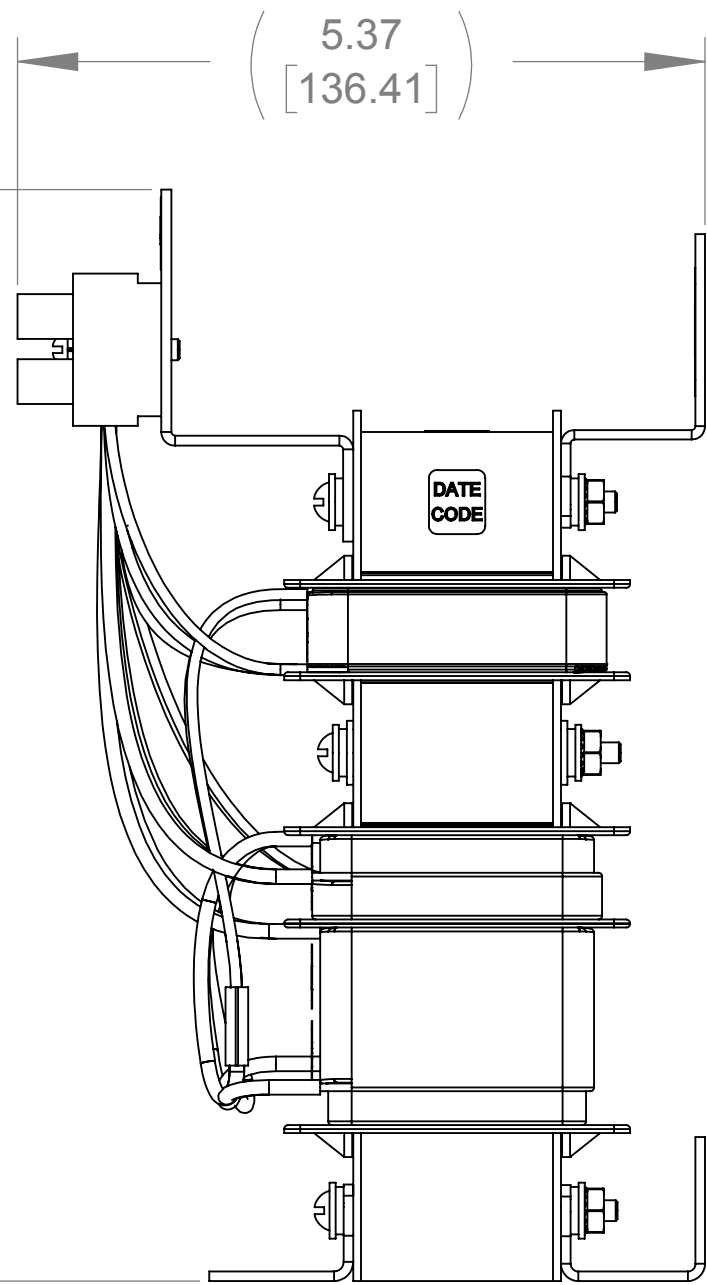
BOTTOM VIEW



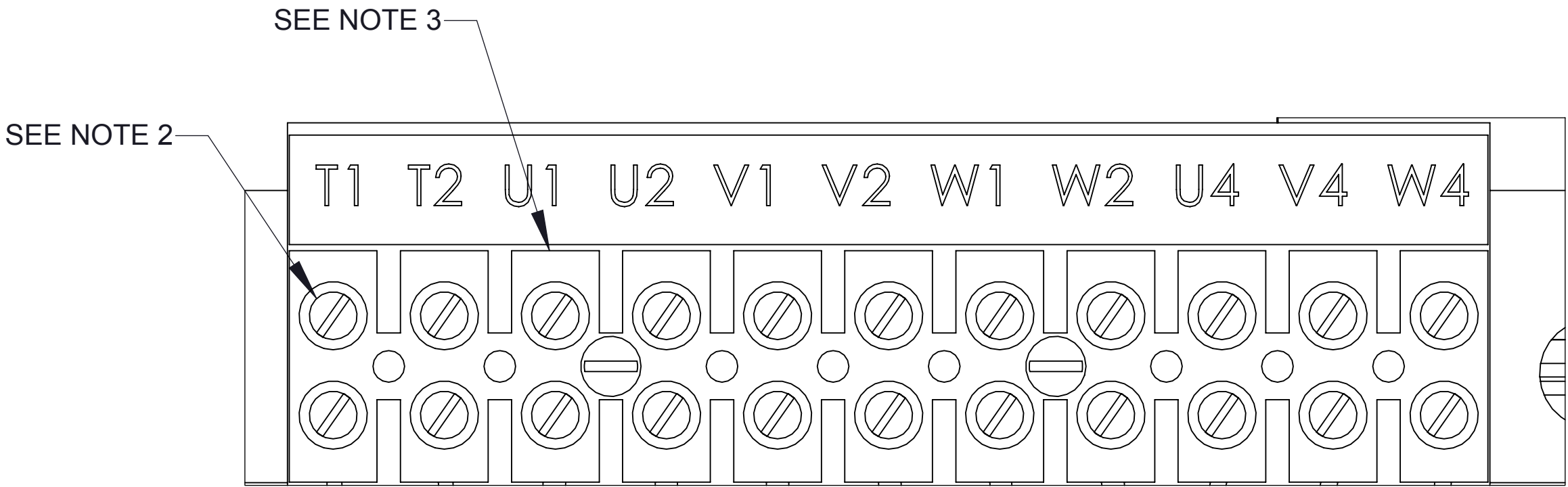
FRONT VIEW



DETAIL C
(2 PLACES)




SIDE VIEW



DETAIL E
CUSTOMER CONNECTION
DETAIL VIEW

NOTES:

1. FILTER REQUIRES CAP-352TP (QTY. 1)
2. TERMINAL SCREW TIGHTENING TORQUE: 16 IN/LBS
3. WIRE RANGE: 4-14 AWG.

THE COMPONENT, PART OR ASSEMBLY DESCRIBED IN THIS DOCUMENT MUST COMPLY WITH THE EU(EUROPEAN UNION) DIRECTIVE RoHS2		MATERIAL		CONFIDENTIAL AND PROPRIETARY INFORMATION THIS DOCUMENT CONTAINS CONFIDENTIAL AND PROPRIETARY INFORMATION OF MTE CORPORATION AND MAY NOT BE USED, COPIED OR DISCLOSED TO OTHERS EXCEPT WITH THE AUTHORIZED WRITTEN PERMISSION OF MTE CORPORATION							
CONTAINS <0.1% OF ANY SVHC BY WEIGHT PER REACH REGULATION				DESCRIPTION							
<div>UNLESS OTHERWISE SPECIFIED DIMENSIONS ARE IN INCHES [MM] TOLERANCES ARE:</div> <div>ANGLES: ± 1 °</div> <div>1 PLACE .X: ± .1 [2.5]</div> <div>2 PLACE .XX: ± .03 [0.76]</div> <div>3 PLACE .XXX: ± .010 [0.254]</div> <div><div>N83 W13330 Leon Road Menomonee Falls, WI 53051 USA 800.455-4683 262.253-8200</div></div>		DRAWN		DATE		MATRIX AP 8A 240V 60Hz OPEN PANEL					
		KV		08/16/18							
		CHECKED		DATE							
		KV		08/29/18							
		APPROVED		DATE		SIZE		DWG No.		REV	
		AK		10/03/18		D		CD MAPP0008A		00	
						SCALE 2:3				SHEET 1 OF 1	