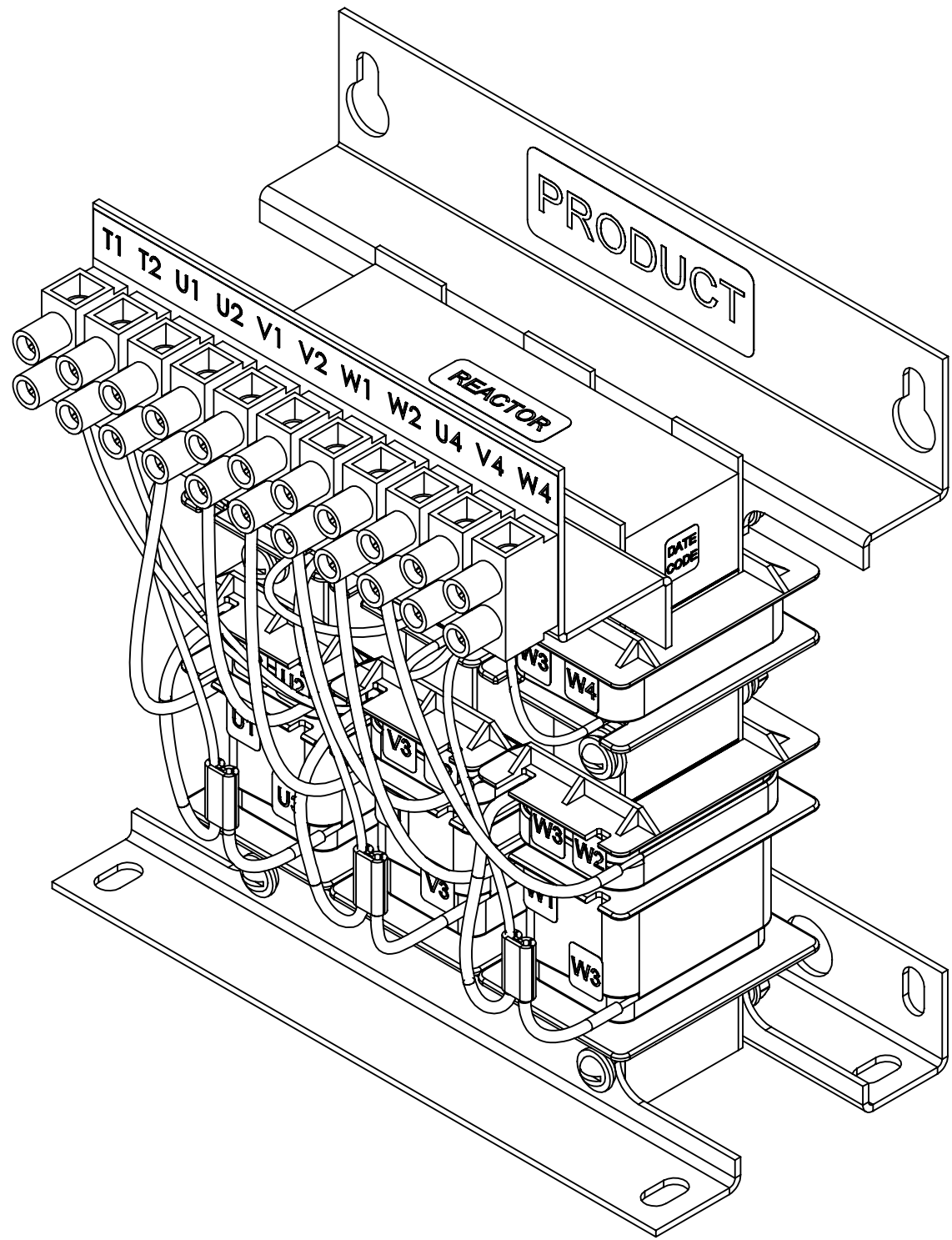
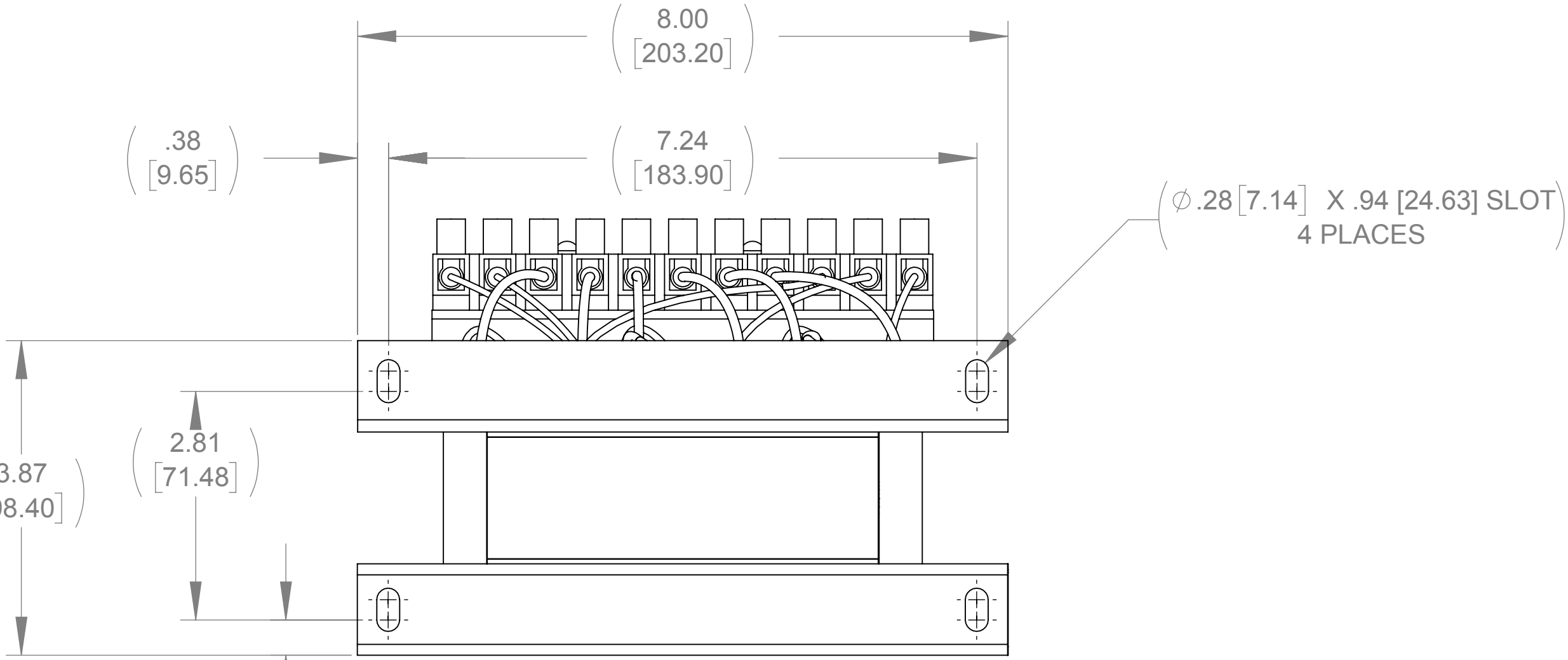
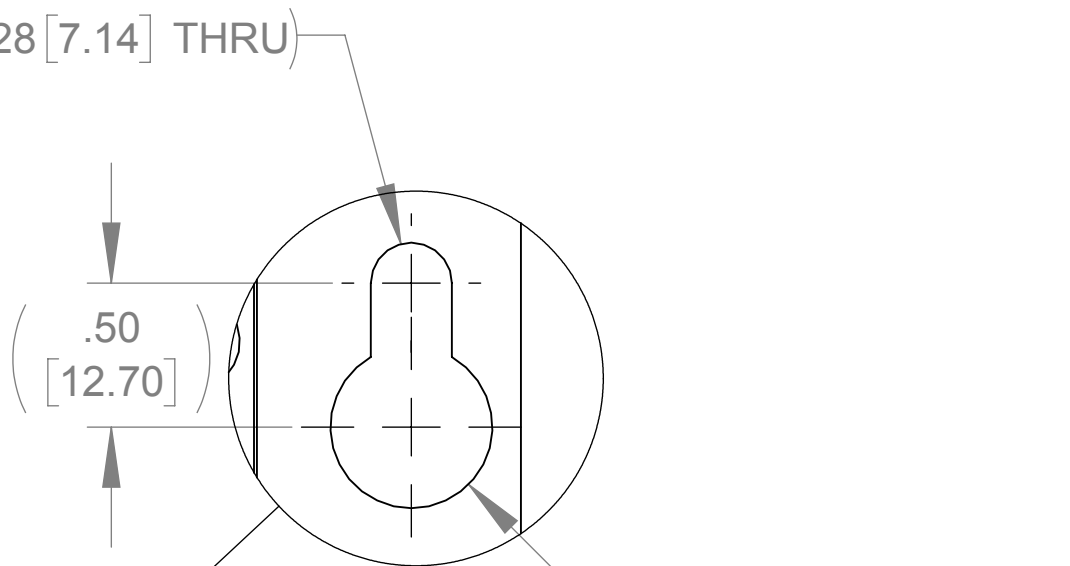


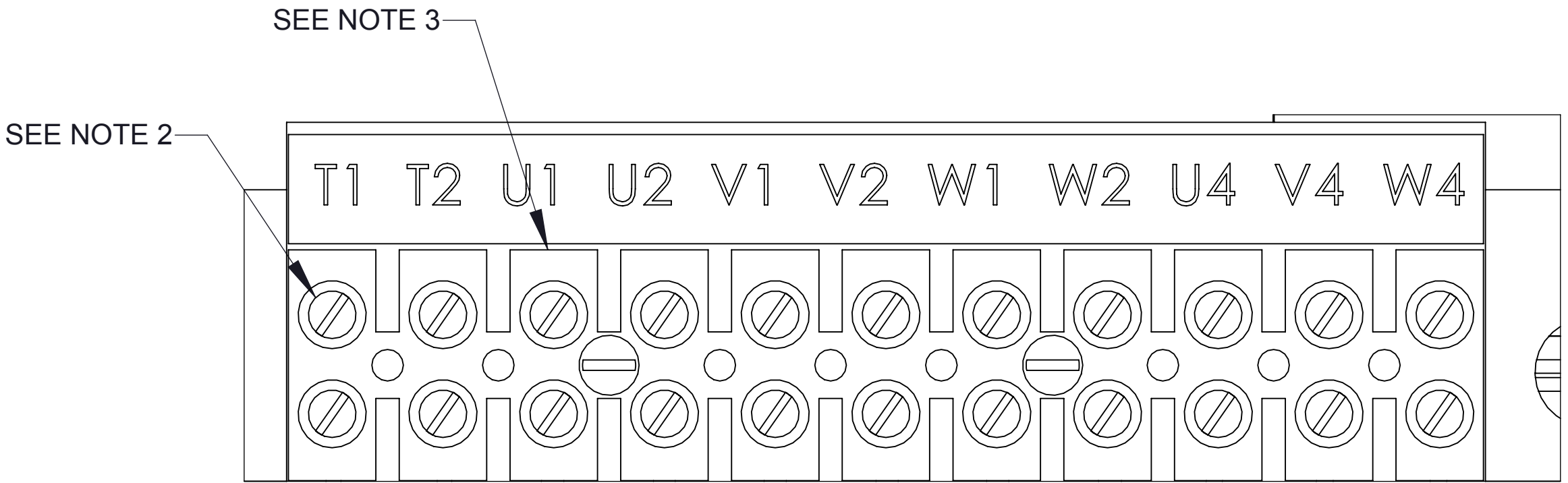
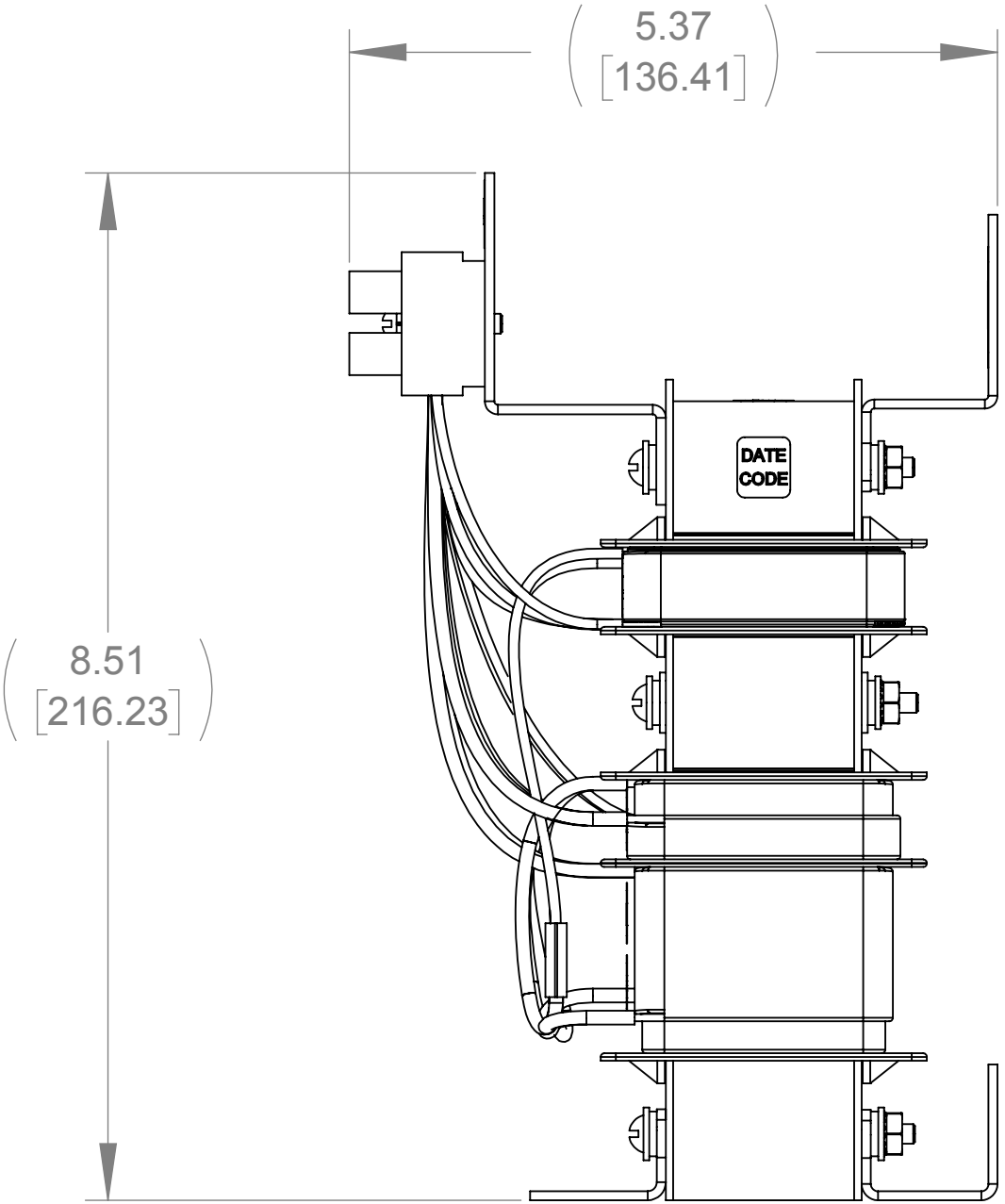
ECO No	DESCRIPTION	REV BY	DATE



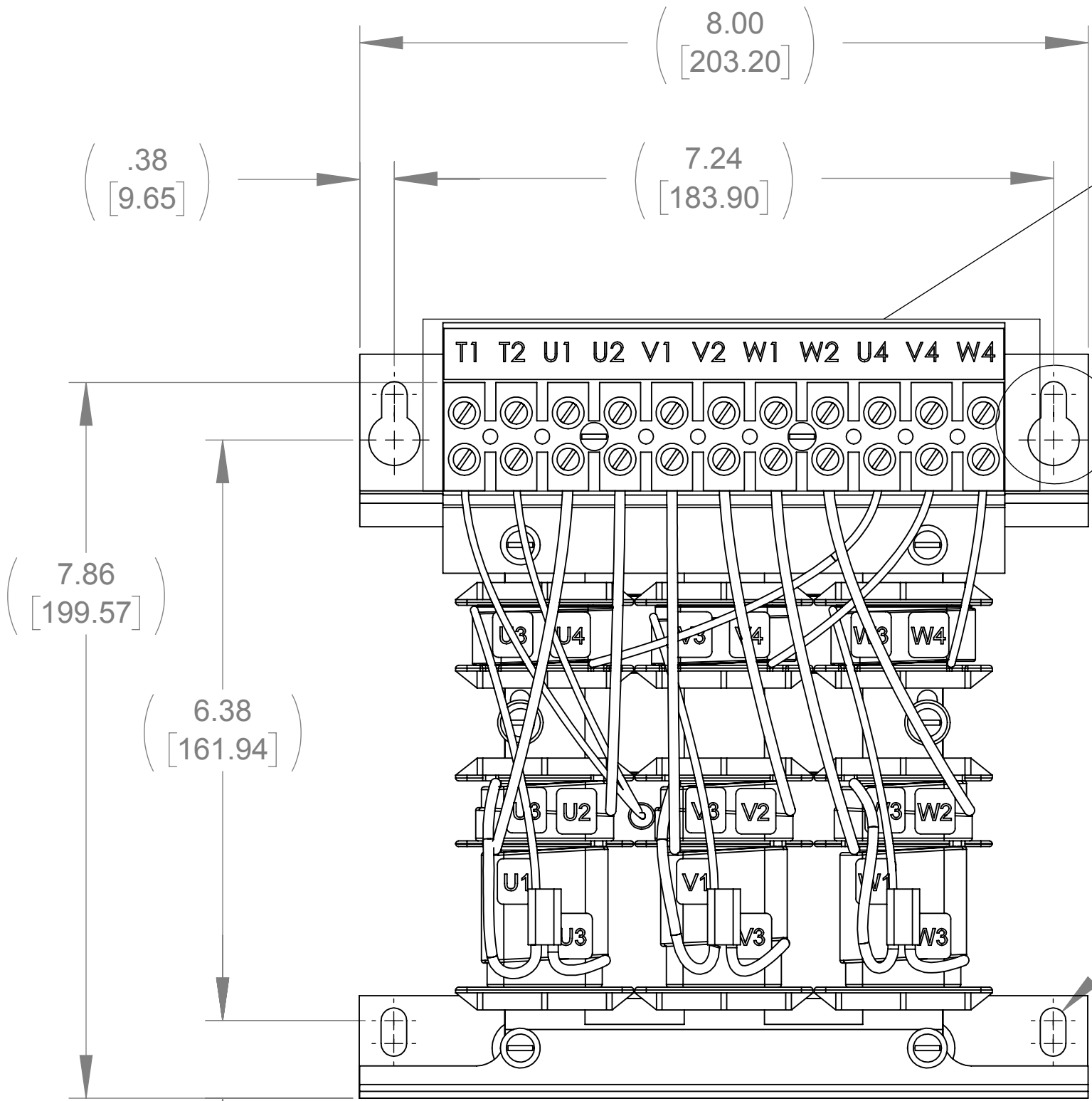
BOTTOM VIEW



**DETAIL C
(2 PLACES)**




DETAIL E
CUSTOMER CONNECTION
DETAIL VIEW



FRONT VIEW

SIDE VIEW

- NOTES:**
- 1. FILTER REQUIRES CAP-352TP (QTY. 1)**
 - 2. TERMINAL SCREW TIGHTENING TORQUE: 16 IN/LBS**
 - 3. WIRE RANGE: 4-14 AWG.**

THE COMPONENT, PART OR ASSEMBLY DESCRIBED IN THIS DOCUMENT MUST COMPLY WITH THE EU(EUROPEAN UNION) DIRECTIVE RoHS2		MATERIAL		CONFIDENTIAL AND PROPRIETARY INFORMATION THIS DOCUMENT CONTAINS CONFIDENTIAL AND PROPRIETARY INFORMATION OF MTE CORPORATION AND MAY NOT BE USED, COPIED OR DISCLOSED TO OTHERS EXCEPT WITH THE AUTHORIZED WRITTEN PERMISSION OF MTE CORPORATION			
CONTAINS <0.1% OF ANY SVHC BY WEIGHT PER REACH REGULATION				DESCRIPTION			
UNLESS OTHERWISE SPECIFIED DIMENSIONS ARE IN INCHES [MM] TOLERANCES ARE: ANGLES: $\pm 1^\circ$ 1 PLACE .X: $\pm .1$ [2.5] 2 PLACE .XX: $\pm .03$ [0.76] 3 PLACE .XXX: $\pm .010$ [0.254]				MATRIX AP 6A 240V 60Hz OPEN PANEL			
N83 W13330 Leon Road Menomonee Falls, WI 53051 USA 800.455-4683 262.253.8200		DRAWN KV	DATE 09/04/18				
		CHECKED KV	DATE 09/04/18				
		APPROVED AK	DATE 10/03/18	SIZE D	DWG No. CD MAPP0006A	REV 00	
				SCALE 2:3			SHEET 1 OF 1