

APPROX. WEIGHT (LBS)
952

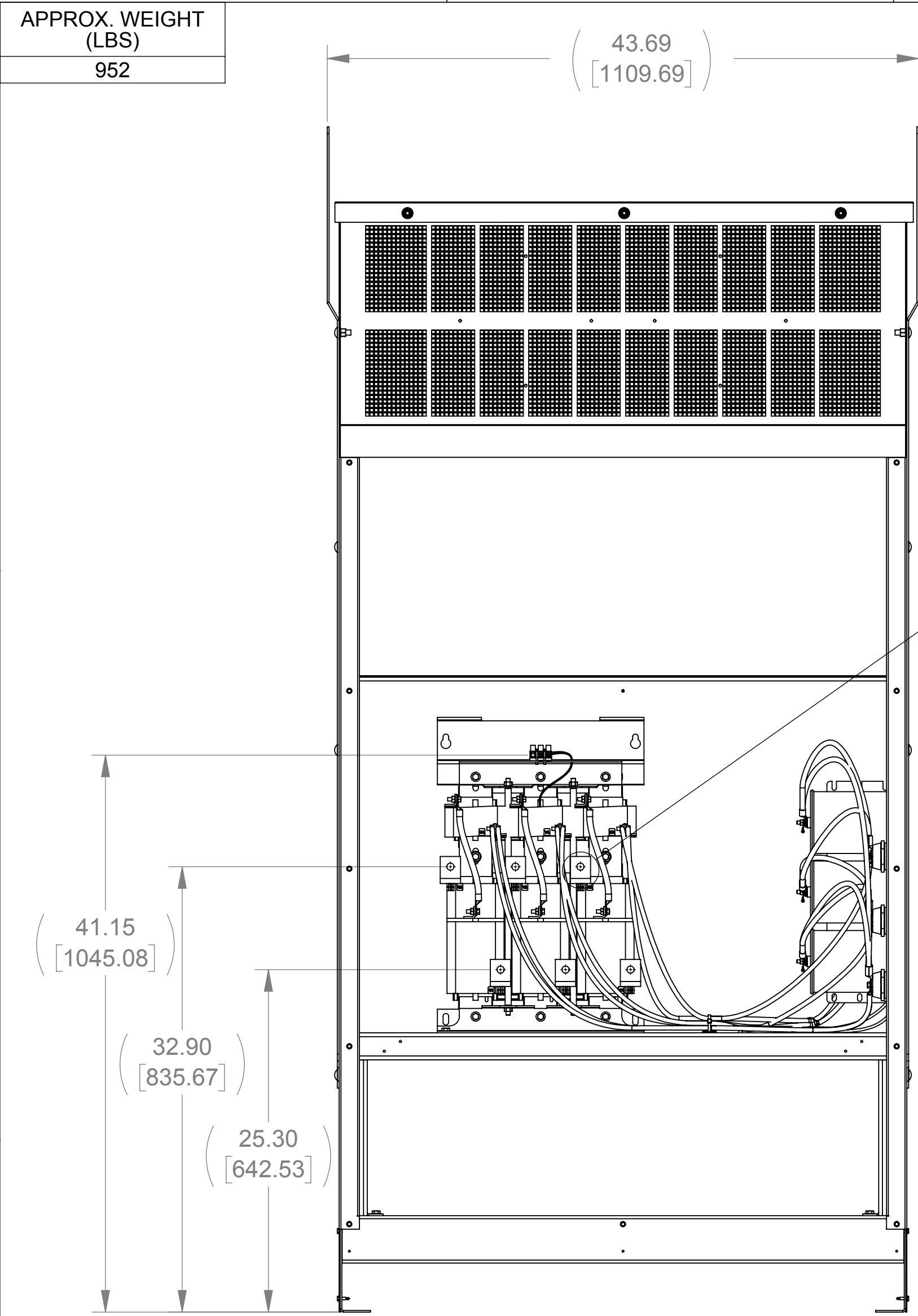
ECO No	DESCRIPTION	REV BY	DATE
M10032	UPDATED TITLE BLOCK AND DESCRIPTION	SL	02/20/17

D

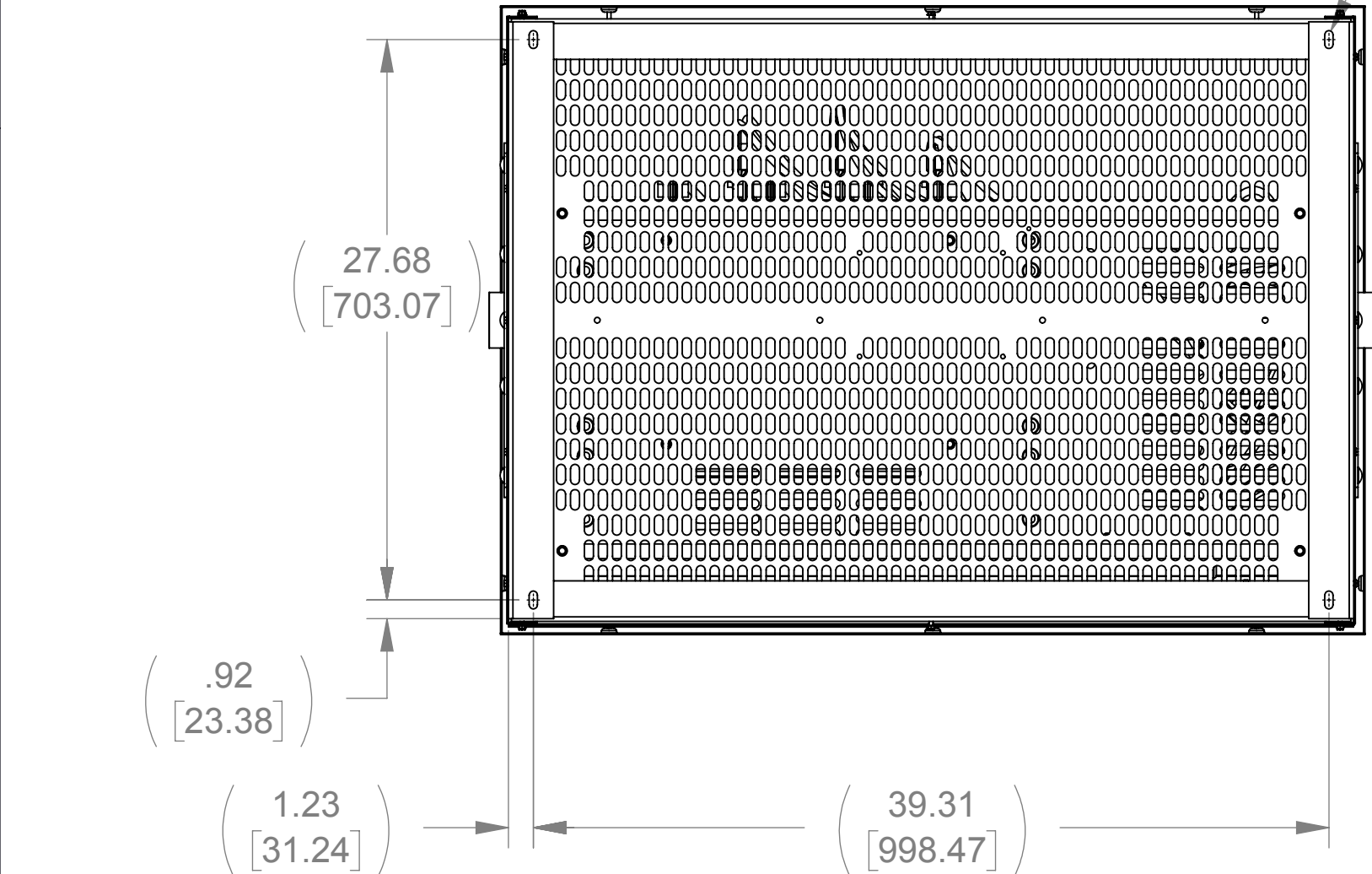
C

B

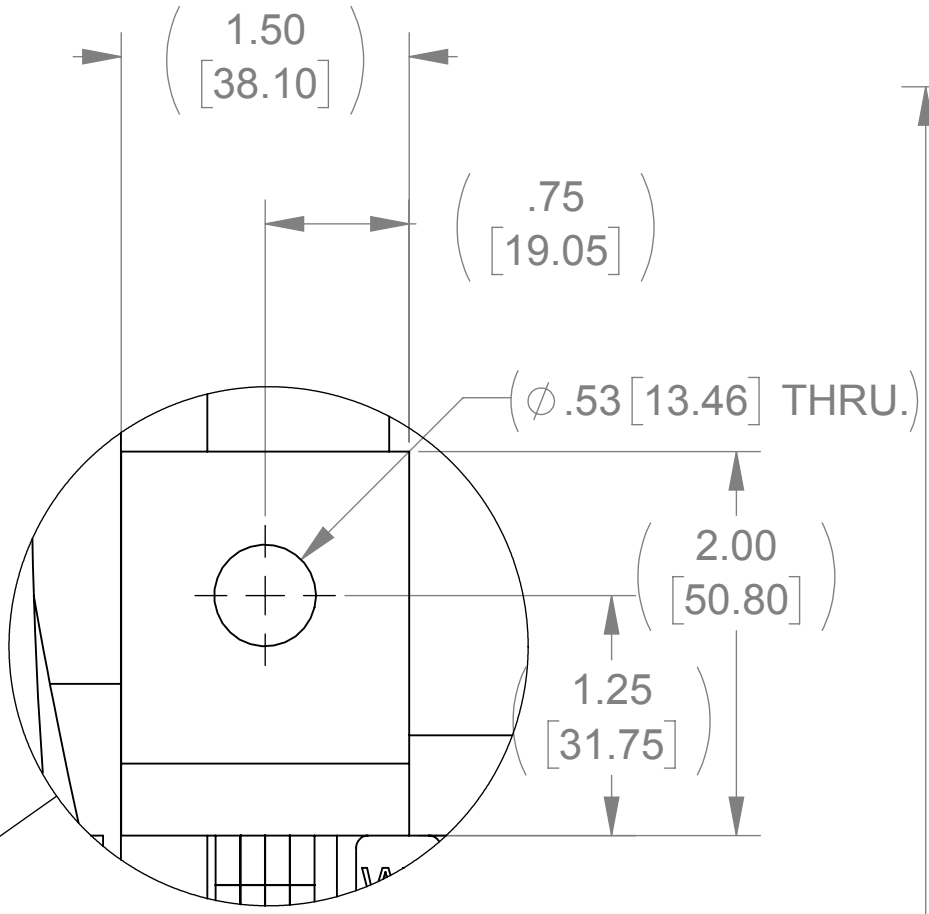
A



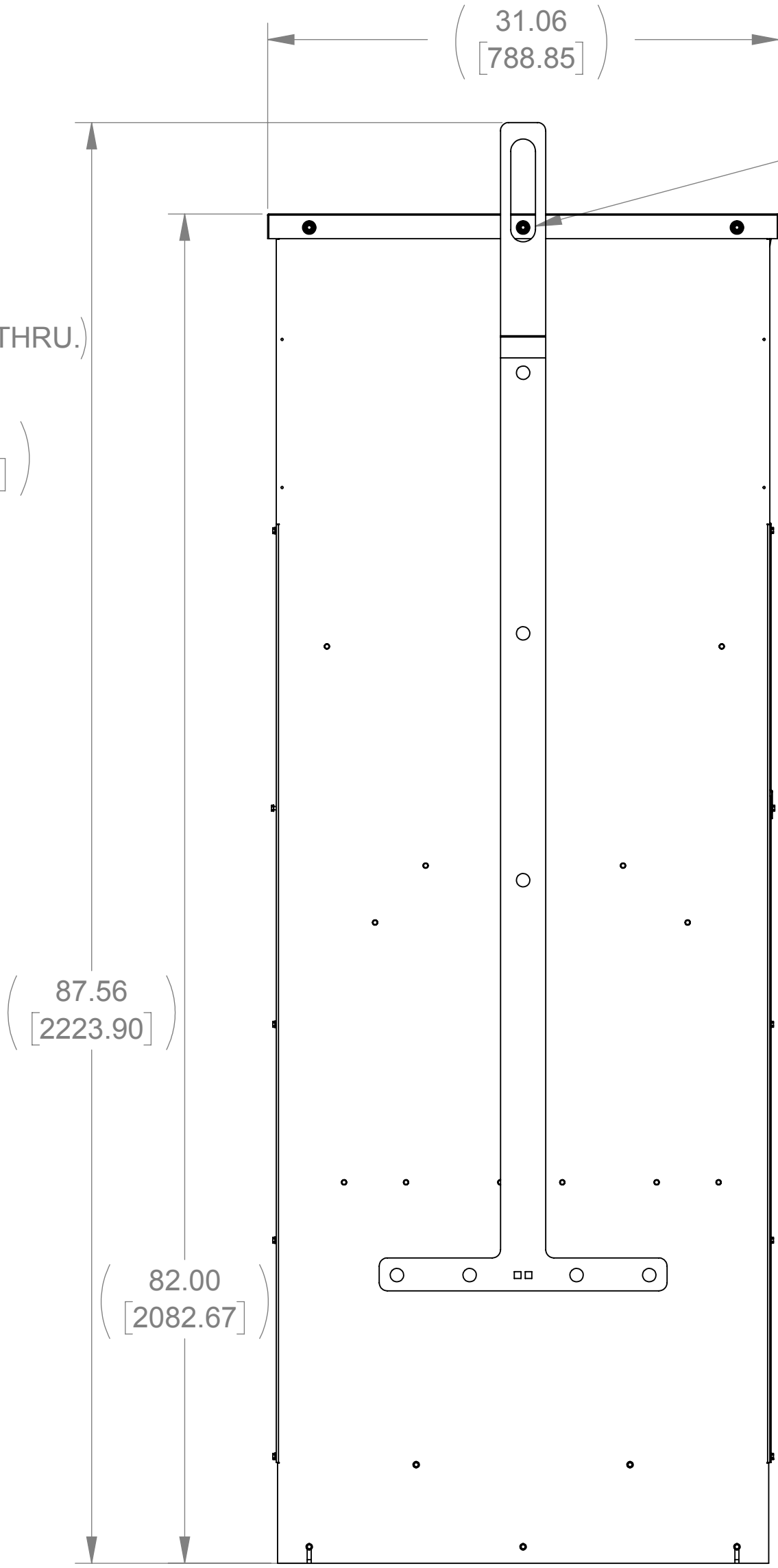
FRONT VIEW  
(PANELS REMOVED)



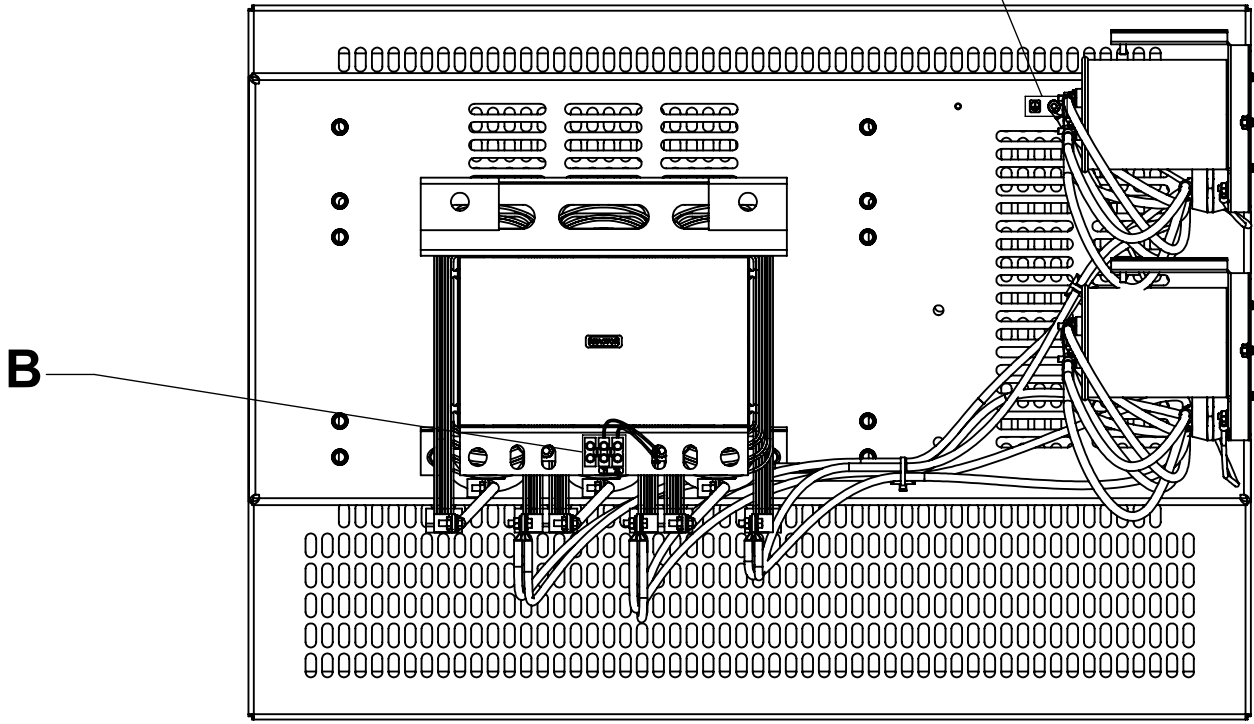
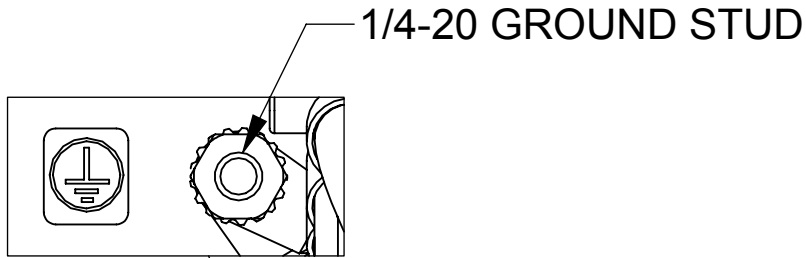
BOTTOM VIEW



DETAIL A  
(6 PLACES)

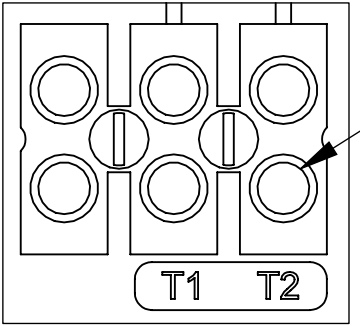


SIDE VIEW



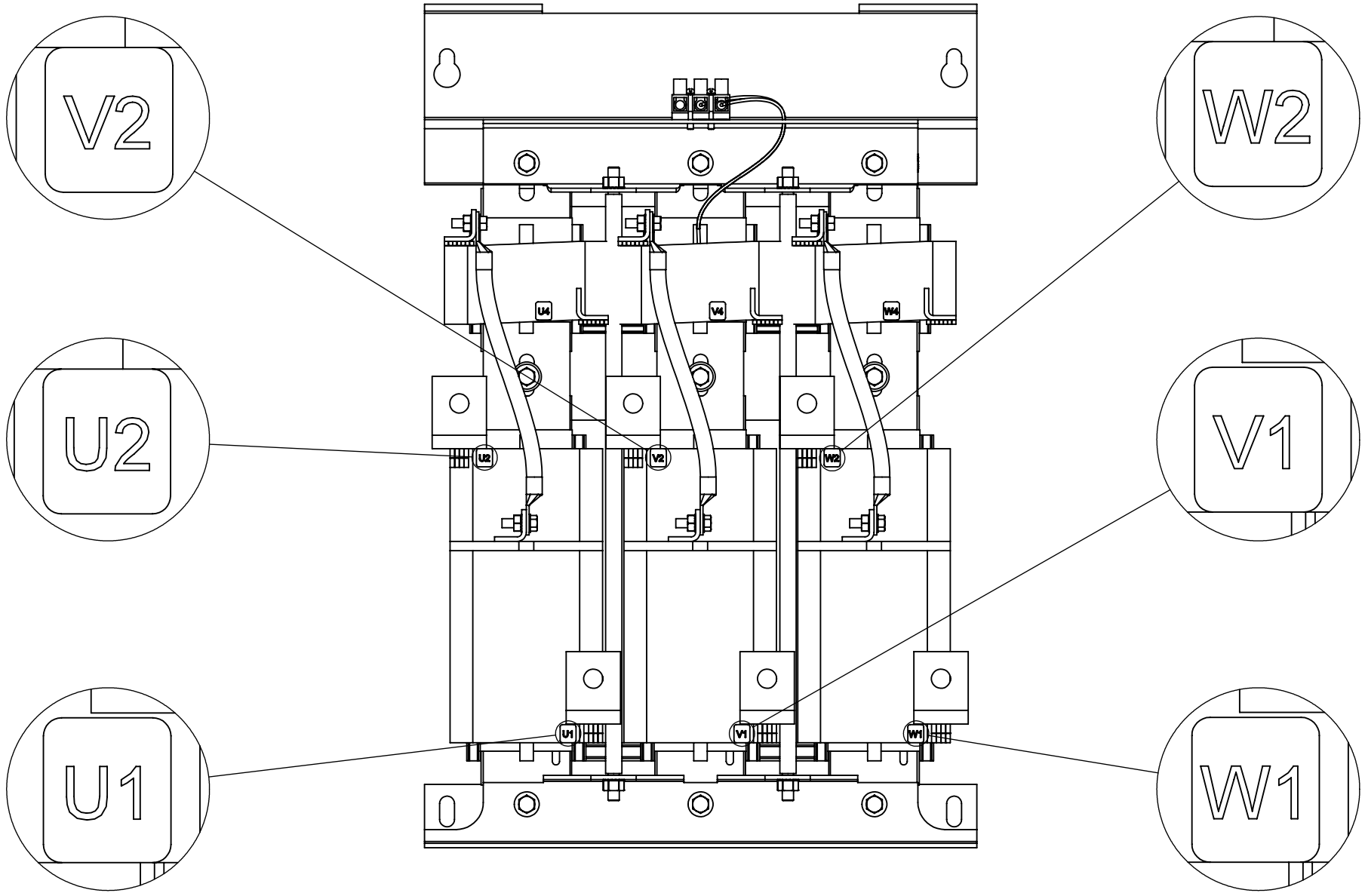
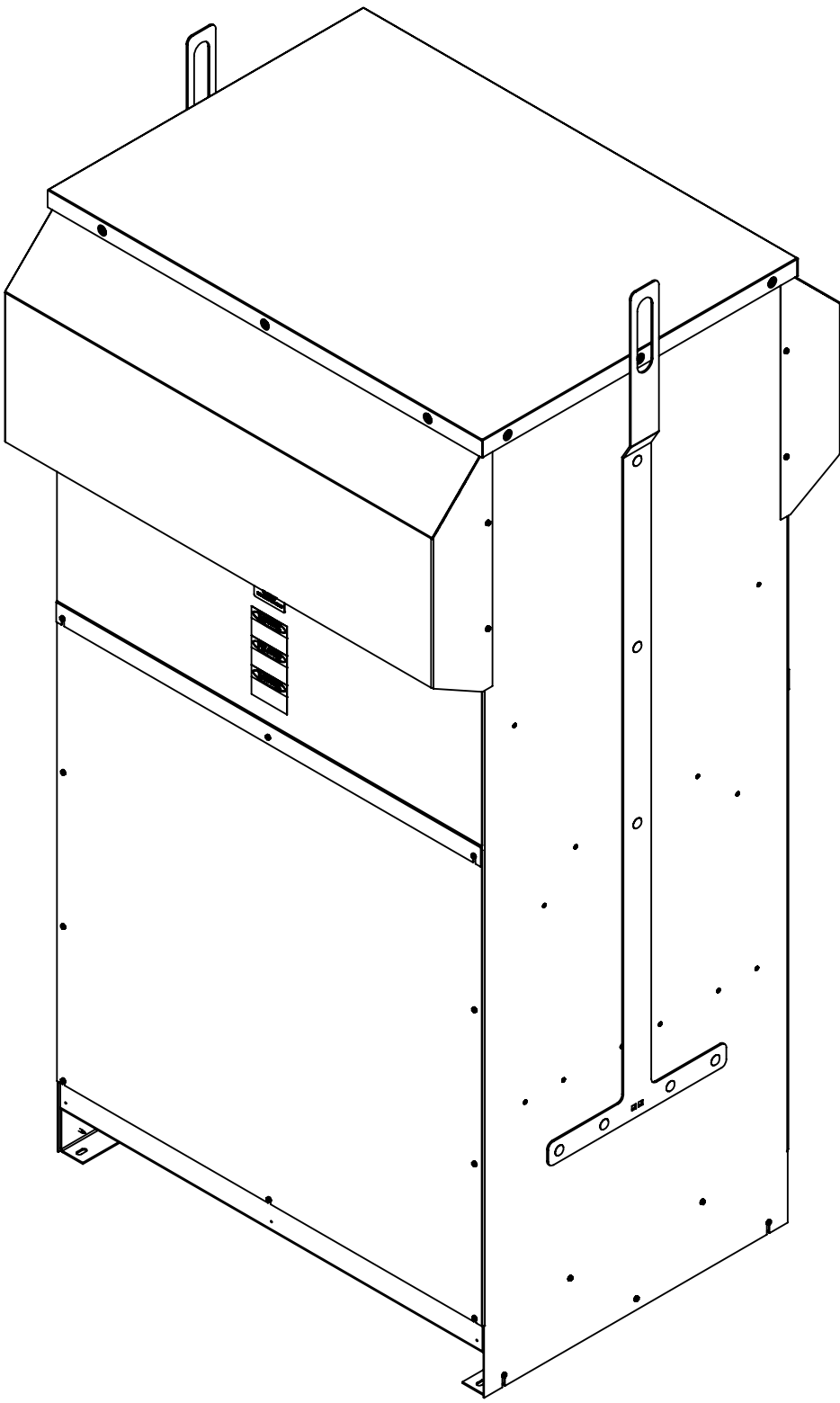
TOP VIEW  
(PANELS REMOVED)

Ø 1.50 [38.10] X 6.50 [165.10]  
SLOT, 2 PLACES



DETAIL B  
CUSTOMER CONNECTION  
DETAIL VIEW (THERMAL)


SEE NOTES 1 & 2



CUSTOMER CONNECTION  
DETAIL VIEW

**NOTES:**

1. TERMINAL SCREW TIGHTENING TORQUE: 16 IN/LBS.
2. WIRE RANGE: 4 - 14 AWG.

THE COMPONENT, PART OR ASSEMBLY DESCRIBED IN THIS DOCUMENT MUST COMPLY WITH THE EU(EUROPEAN UNION) DIRECTIVE RoHS2		MATERIAL		CONFIDENTIAL AND PROPRIETARY INFORMATION THIS DOCUMENT CONTAINS CONFIDENTIAL AND PROPRIETARY INFORMATION OF MTE CORPORATION AND MAY NOT BE USED, COPIED OR DISCLOSED TO OTHERS EXCEPT WITH THE AUTHORIZED WRITTEN PERMISSION OF MTE CORPORATION			
CONTAINS <0.1% OF ANY SVHC BY WEIGHT PER REACH REGULATION				DESCRIPTION			
<div>UNLESS OTHERWISE SPECIFIED DIMENSIONS ARE IN INCHES [MM] TOLERANCES ARE:</div> <div>ANGLES: ± 1 °</div> <div>1 PLACE .X: ± .1 [2.5]</div> <div>2 PLACE .XX: ± .03 [0.76]</div> <div>3 PLACE .XXX: ± .010 [0.254]</div>		<div></div> <div>N83 W13330 Leon Road Menomonee Falls, WI 53051 USA 800.455.4683 262.253.8200</div>		MATRIX AP 482A 400V 50HZ FILTER, NEMA 1/2 ENCL			
		DRAWN	DATE	SIZE	DWG No.	REV	
		MM	06/06/13				
		CHECKED	DATE	SCALE	1:8		
		RH	06/08/17				
		APPROVED	DATE	SHEET 1 OF 1			
		RH	06/08/17				
				CD MAPG0482C			