

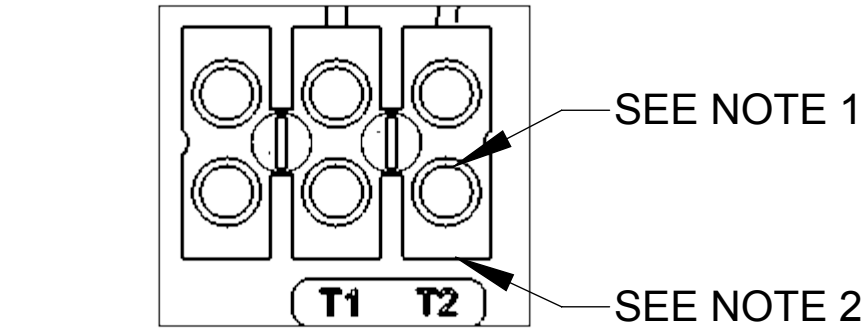
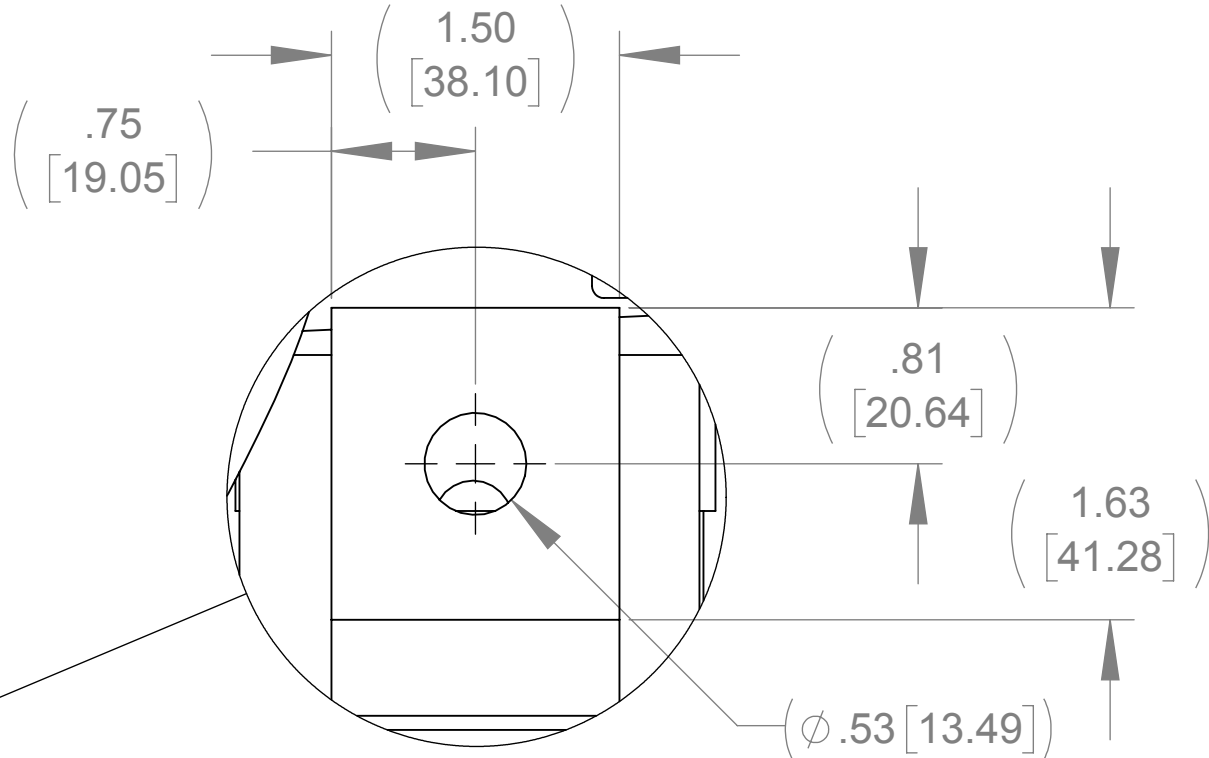
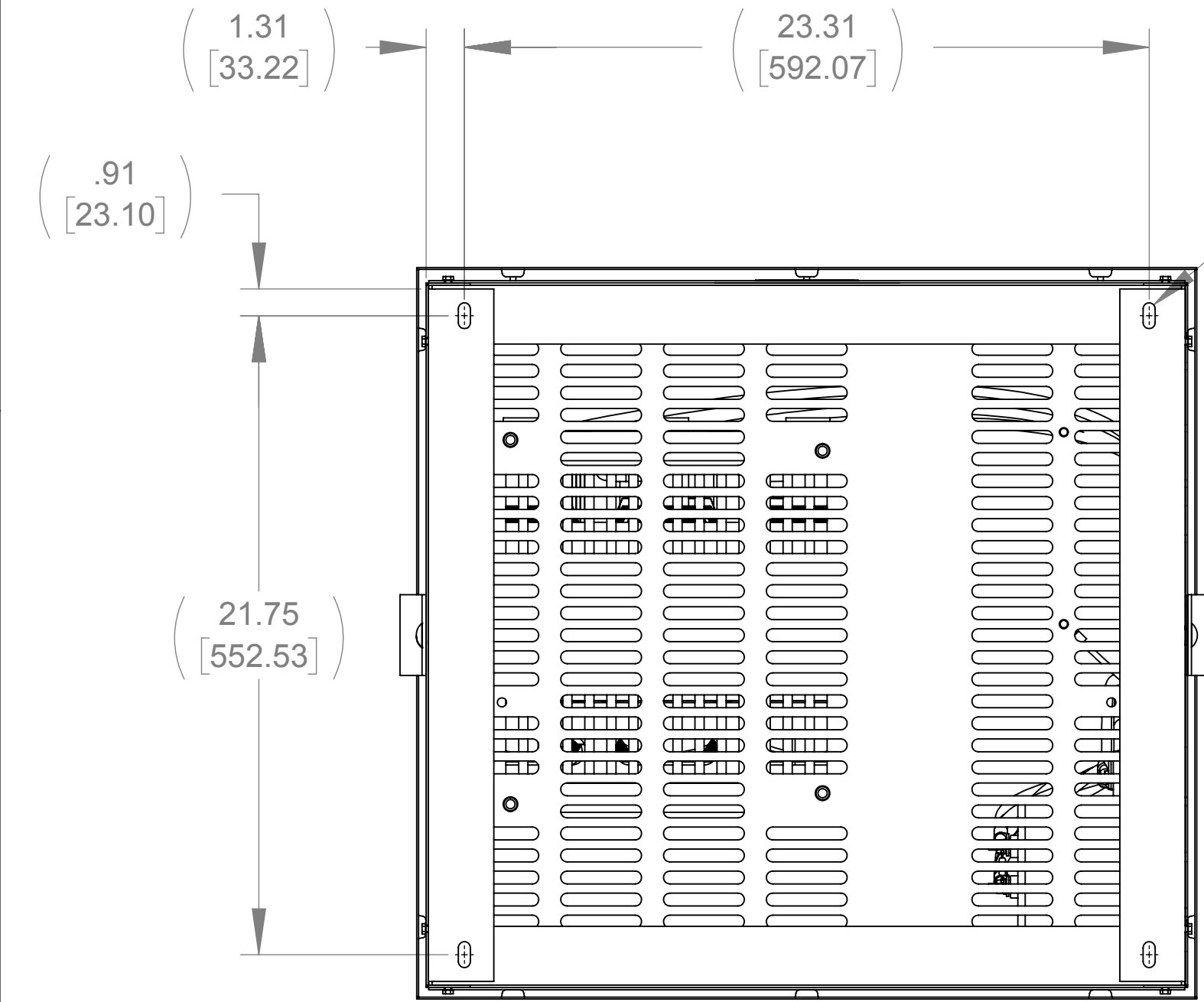
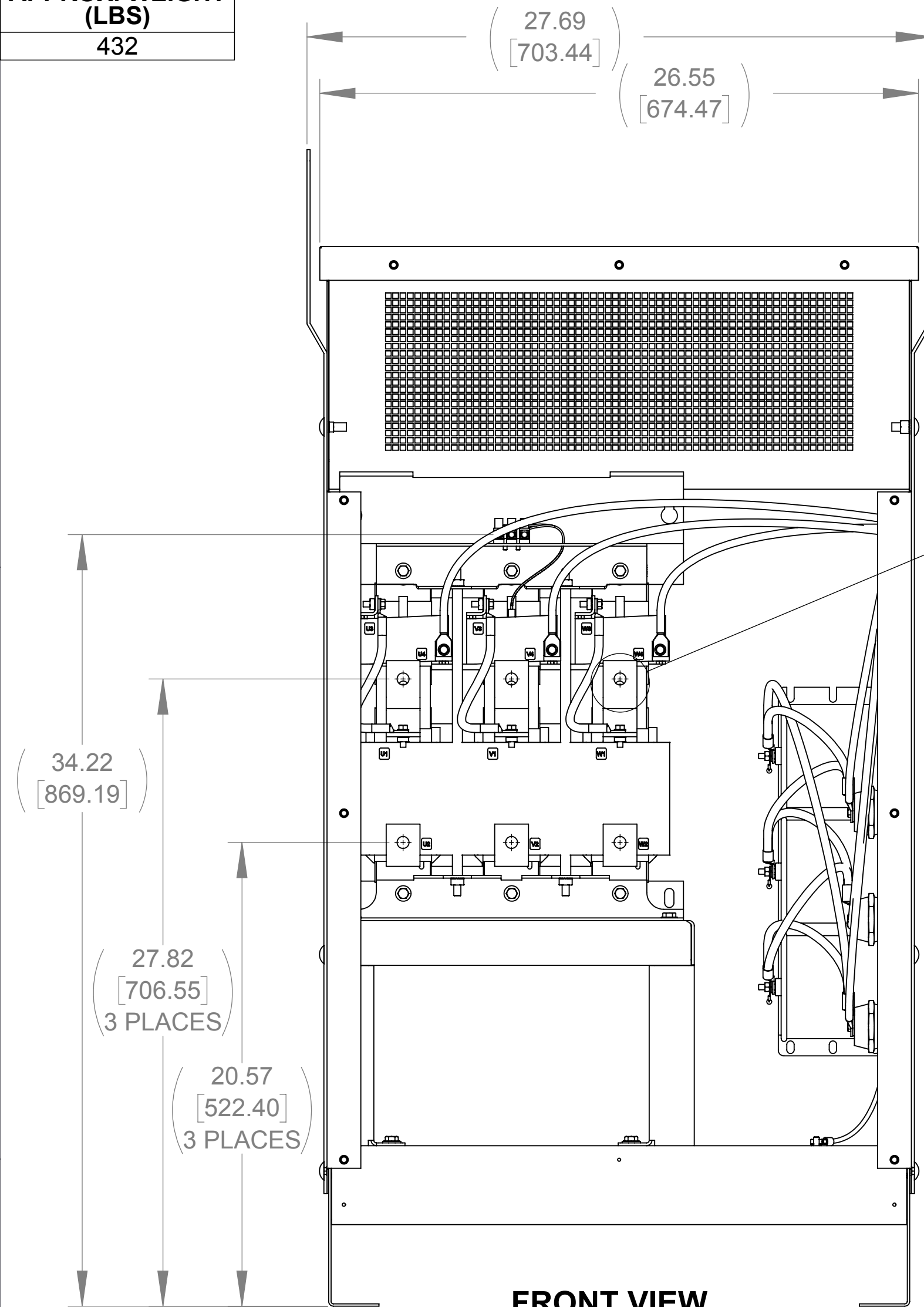
APPROX. WEIGHT  
(LBS)  
432

D

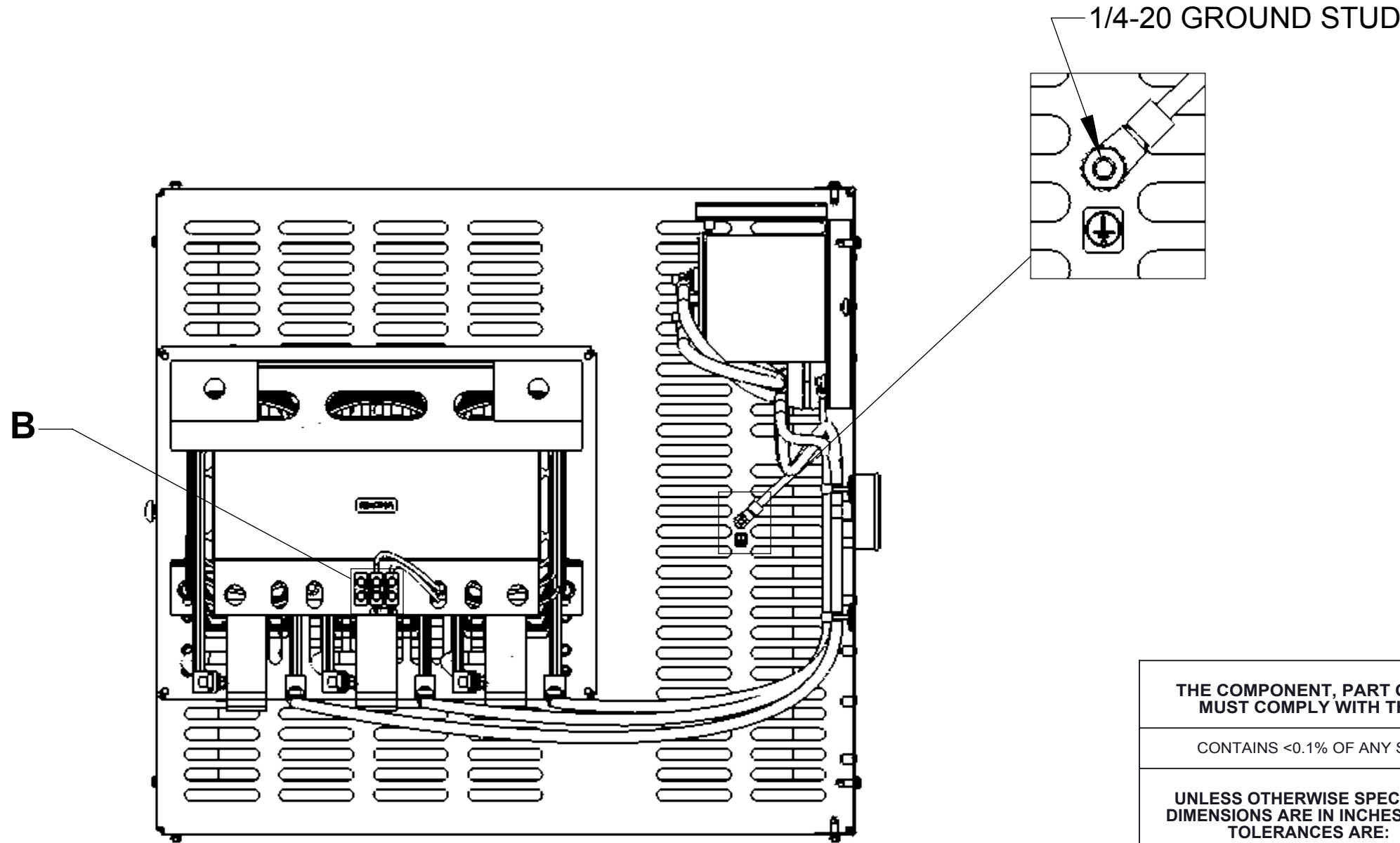
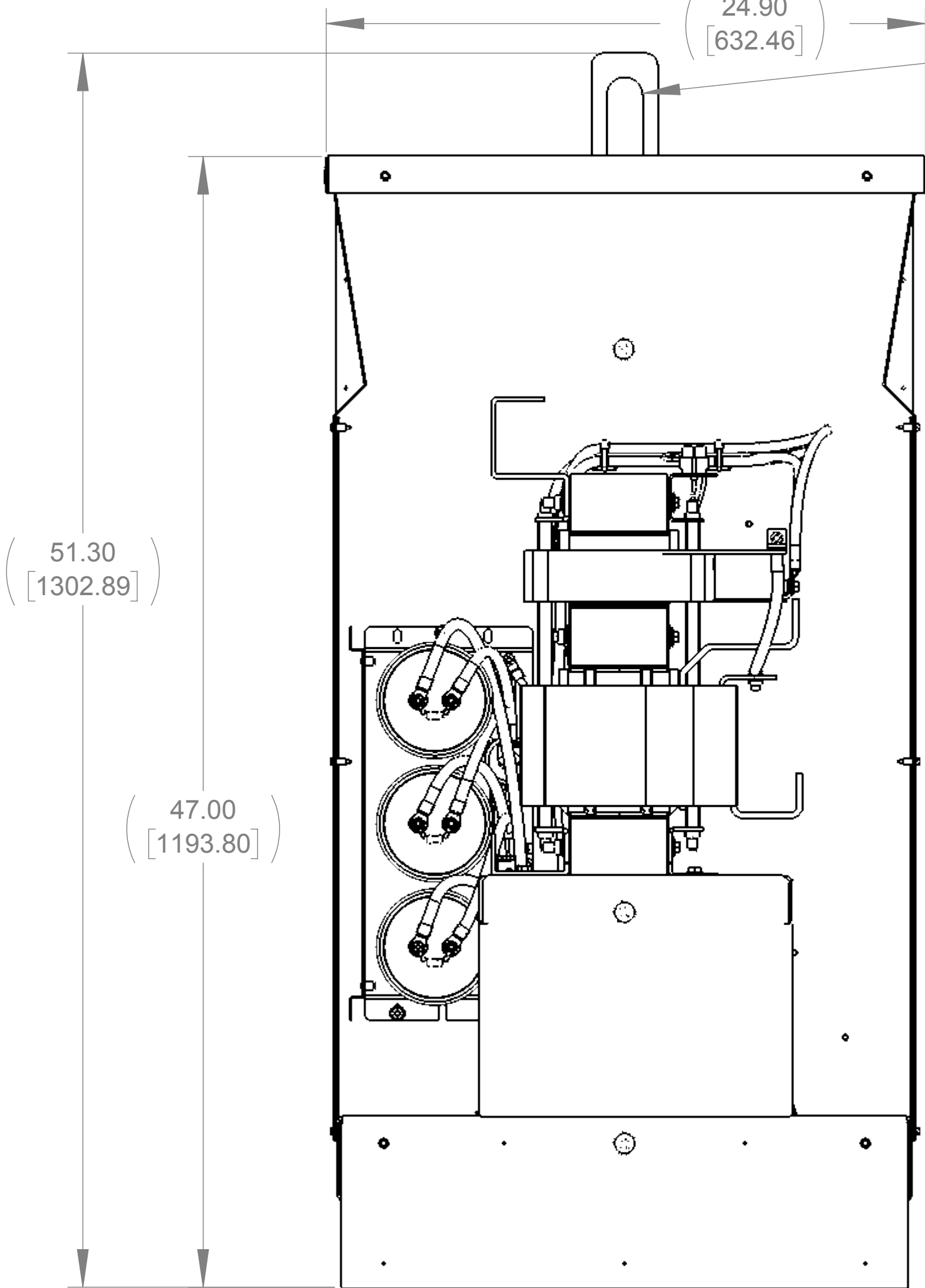
C

B

A

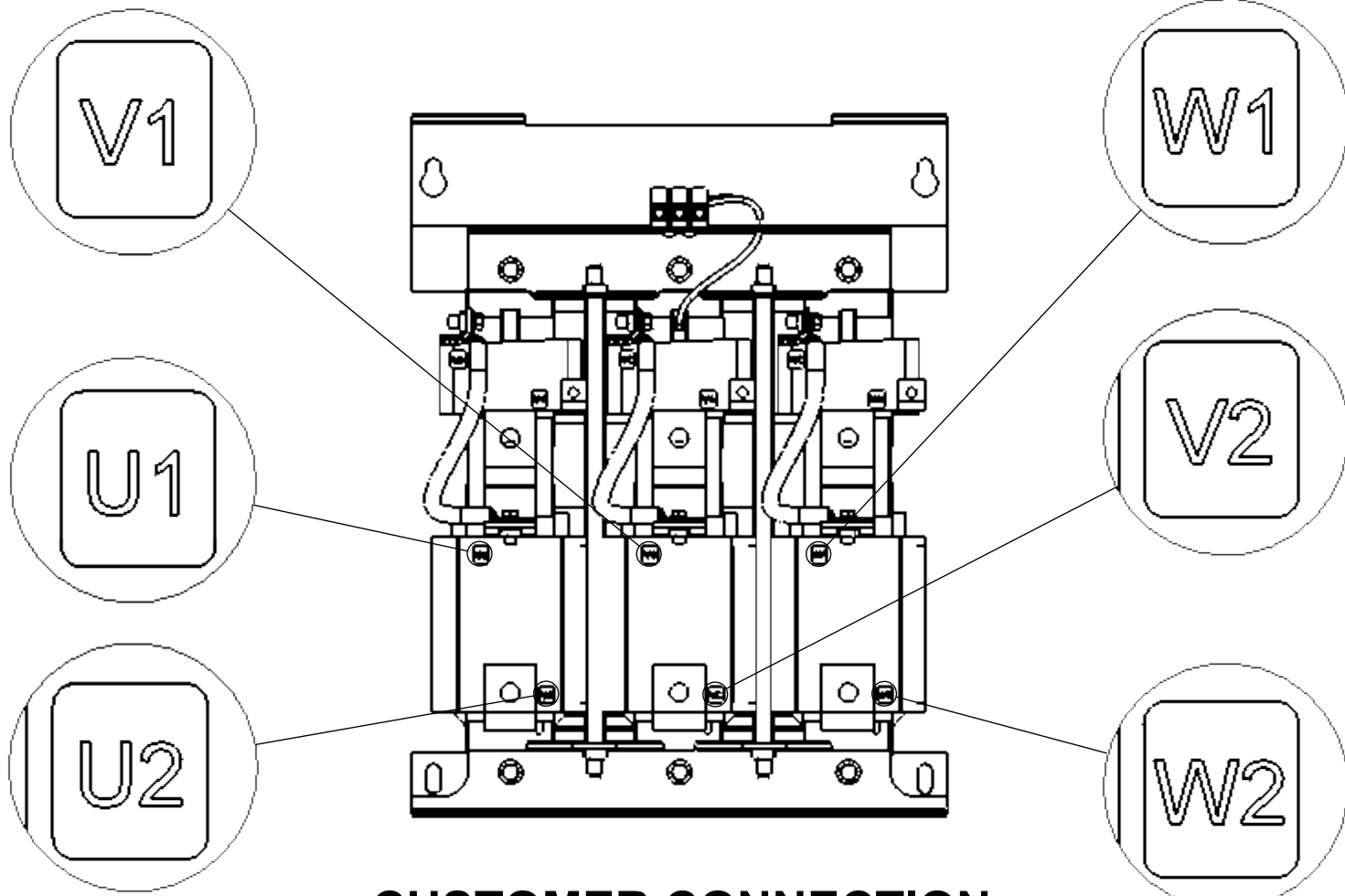


**DETAIL B  
CUSTOMER CONNECTION  
DETAIL VIEW (THERMAL)**




**TOP VIEW  
(TOP PANEL REMOVED)**

$\phi 1.50 [38.10] \times 4.50 [114.30]$   
SLOT, 2 PLACES



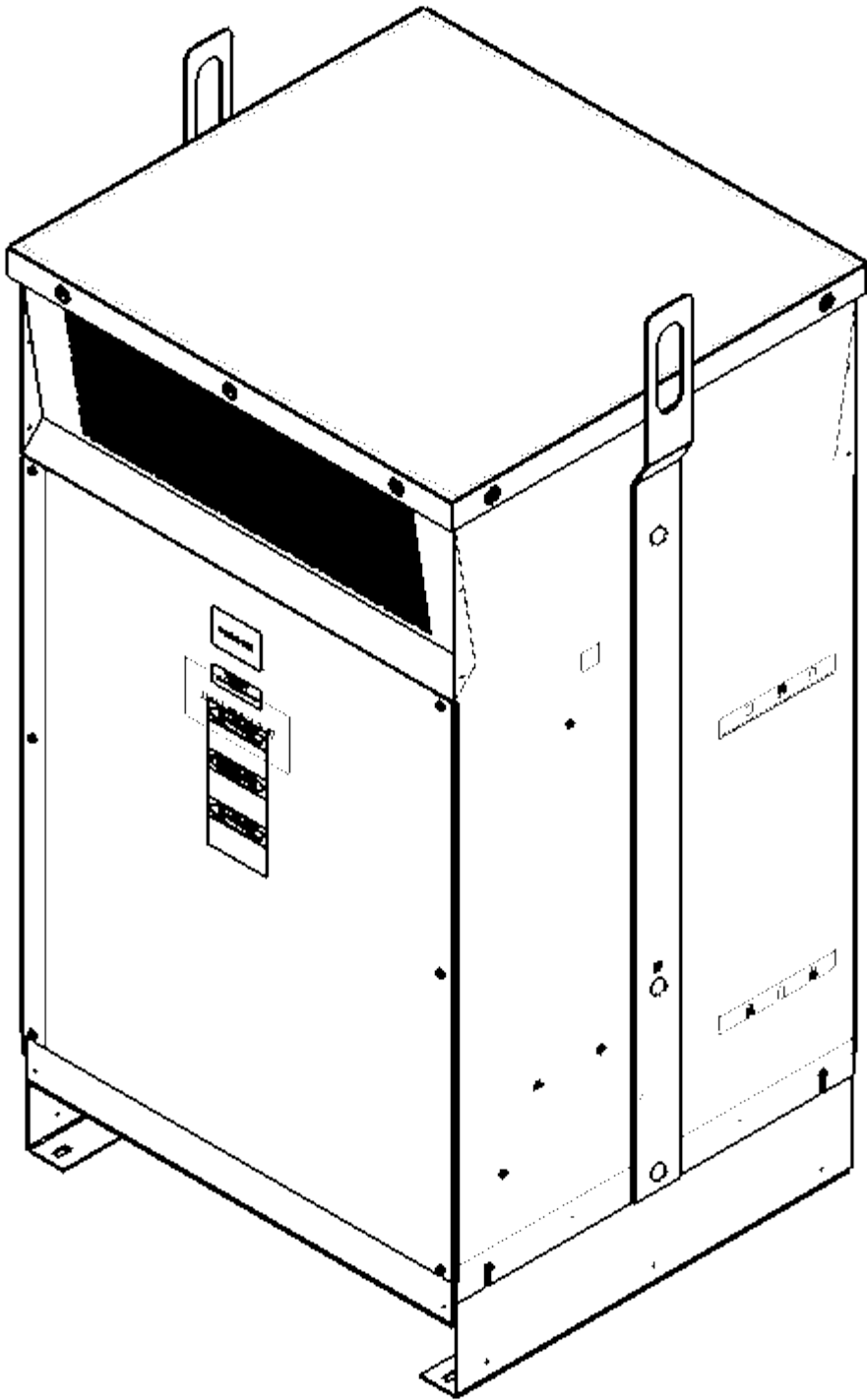
**NOTES:**

1. TERMINAL SCREW TIGHTENING TORQUE: 16 IN/LBS.
2. WIRE RANGE: 4-14 AWG.

|   |  |  |          |  |  |         |     |
|---|--|--|----------|--|--|---------|-----|
| THE COMPONENT, PART OR ASSEMBLY DESCRIBED IN THIS DOCUMENT MUST COMPLY WITH THE EU(EUROPEAN UNION) DIRECTIVE RoHS2  |  | MATERIAL   |          | CONFIDENTIAL AND PROPRIETARY INFORMATION<br>THIS DOCUMENT CONTAINS CONFIDENTIAL AND PROPRIETARY INFORMATION OF MTE CORPORATION AND MAY NOT BE USED, COPIED OR DISCLOSED TO OTHERS EXCEPT WITH THE AUTHORIZED WRITTEN PERMISSION OF MTE CORPORATION |  |         |     |
| CONTAINS <0.1% OF ANY SVHC BY WEIGHT PER REACH REGULATION   |  |  |          | DESCRIPTION  |  |         |     |
| <div>UNLESS OTHERWISE SPECIFIED DIMENSIONS ARE IN INCHES [MM] TOLERANCES ARE:</div> <div>ANGLES: ± 1 °</div> <div>1 PLACE .X: ± .1 [2.5]</div> <div>2 PLACE .XX: ± .03 [0.76]</div> <div>3 PLACE .XXX: ± .010 [0.254]</div> |  | <div></div> <div>N83 W13330 Leon Road<br/>Menomonee Falls, WI 53051 USA<br/>800.455-4683<br/>262.253.8200</div> |          | MATRIX AP 320A 240V 60Hz<br>FILTER, NEMA 1/2 ENCL  |  |         |     |
|   |  | DRAWN  | DATE     | SIZE   |  | DWG No. | REV |
|   |  | KV   | 09/04/18 | D  |  |         | 00  |
|   |  | CHECKED  | DATE     | SCALE  |  |         |     |
|   |  | KV   | 09/04/18 | 1:5  |  |         |     |
|   |  | APPROVED   | DATE     | SHEET 1 OF 1   |  |         |     |
|   |  | AK   | 10/04/18 |  |  |         |     |

**MTE**  
POWER QUALITY. SOLVED.

N83 W13330 Leon Road  
Menomonee Falls, WI 53051 USA  
800.455-4683  
262.253.8200



D

C

B

A