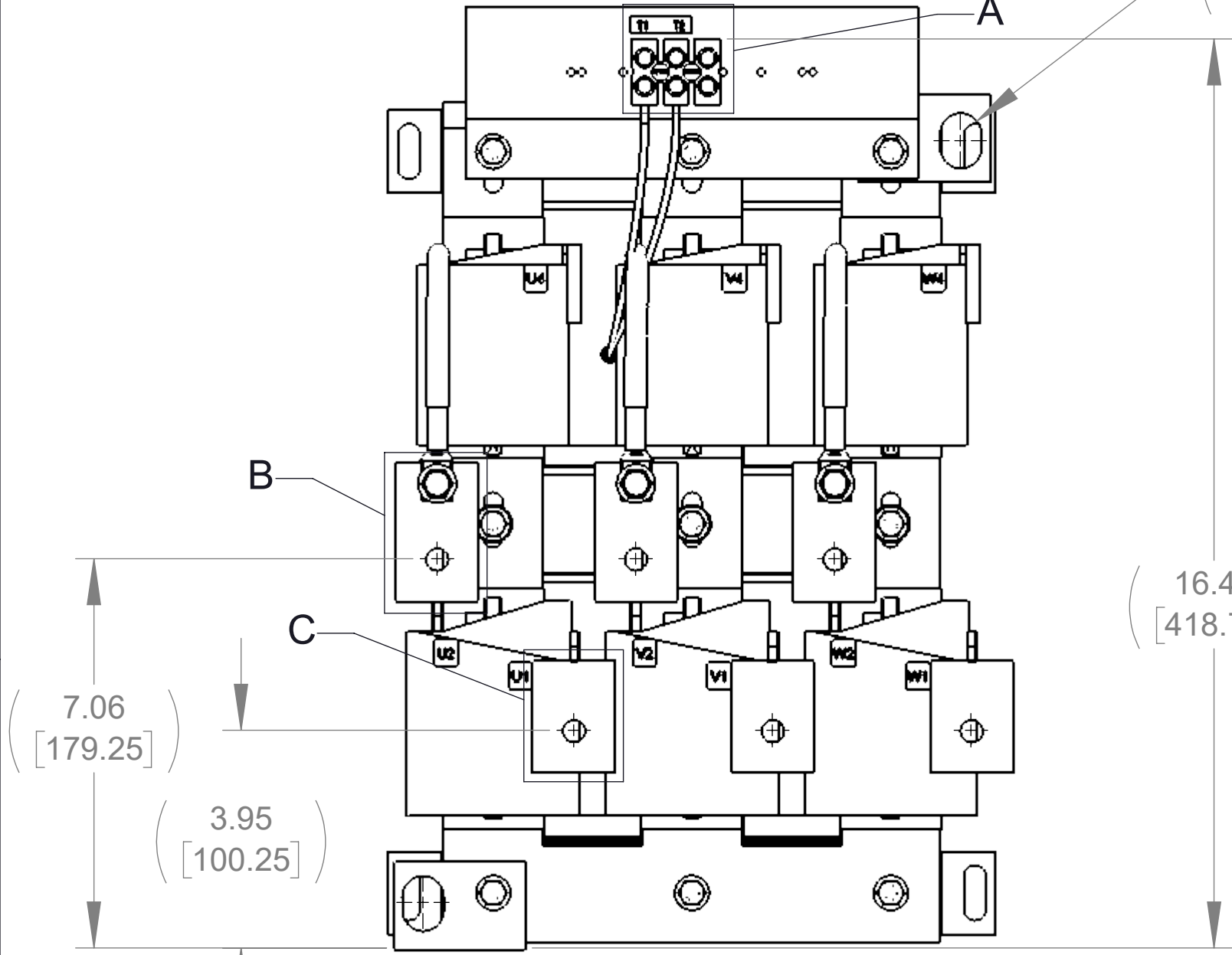
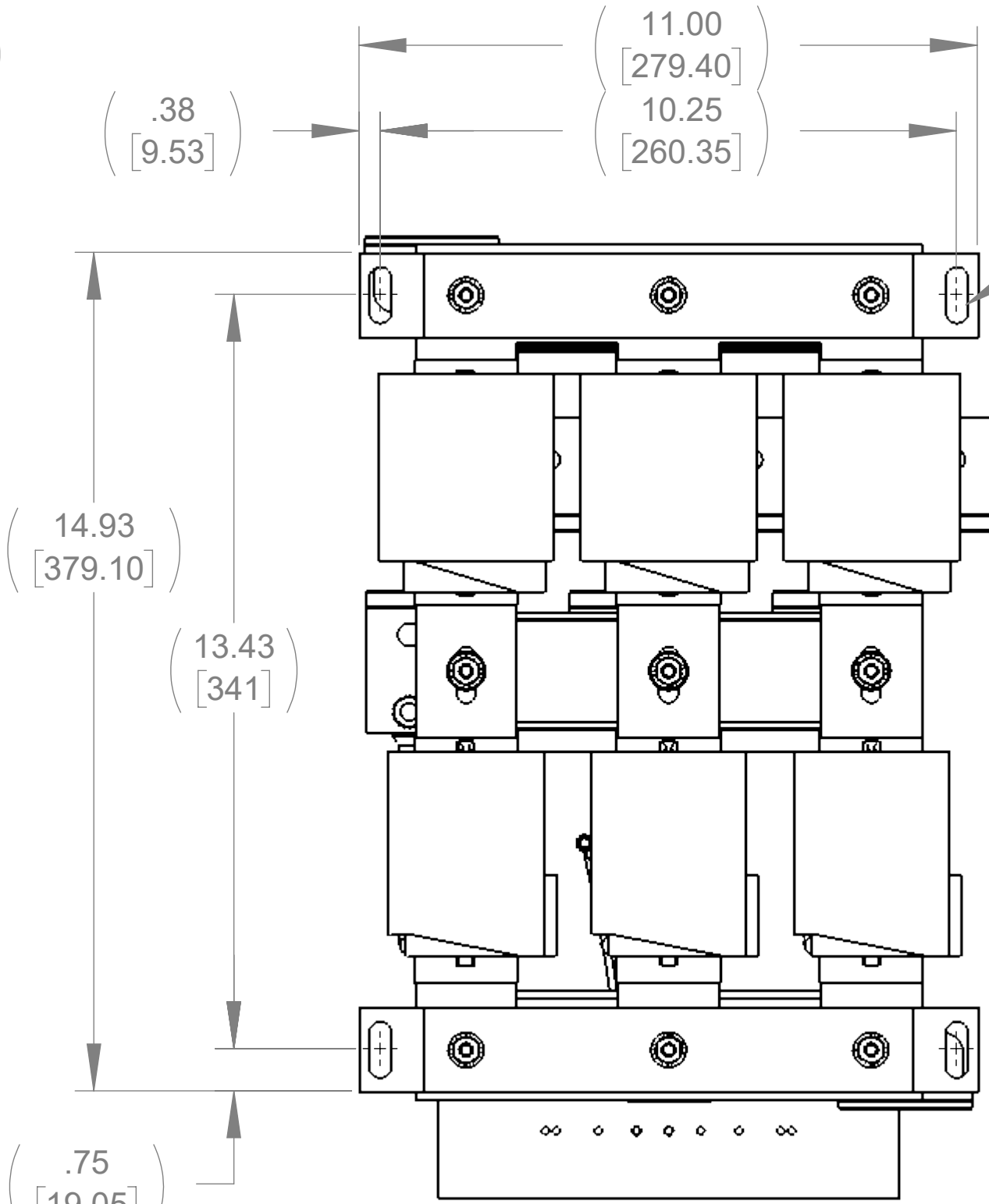


APPROX. WEIGHT
(LBS)
138

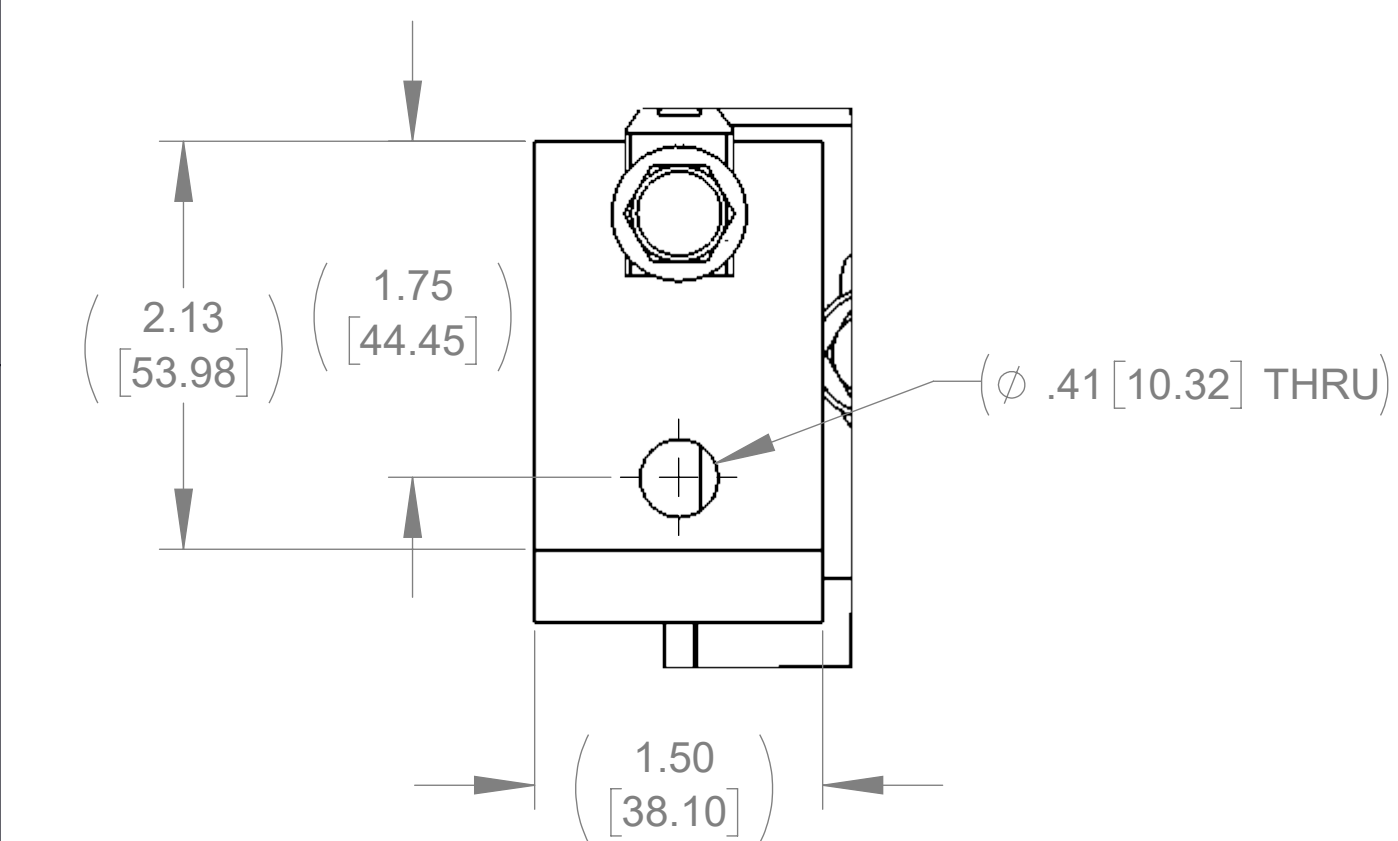
ECO No	DESCRIPTION	REV BY	DATE
M13157	UPDATE TO NEW TERMBLK	MN	10/19/20



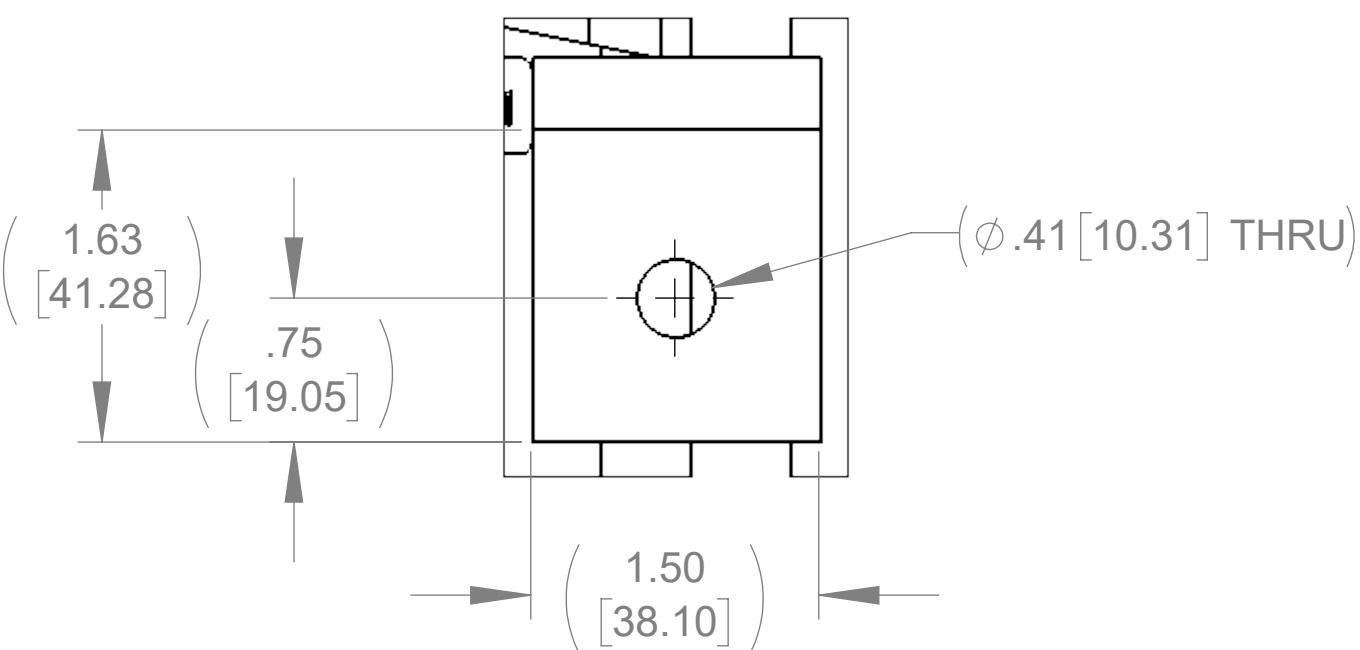
TOP VIEW



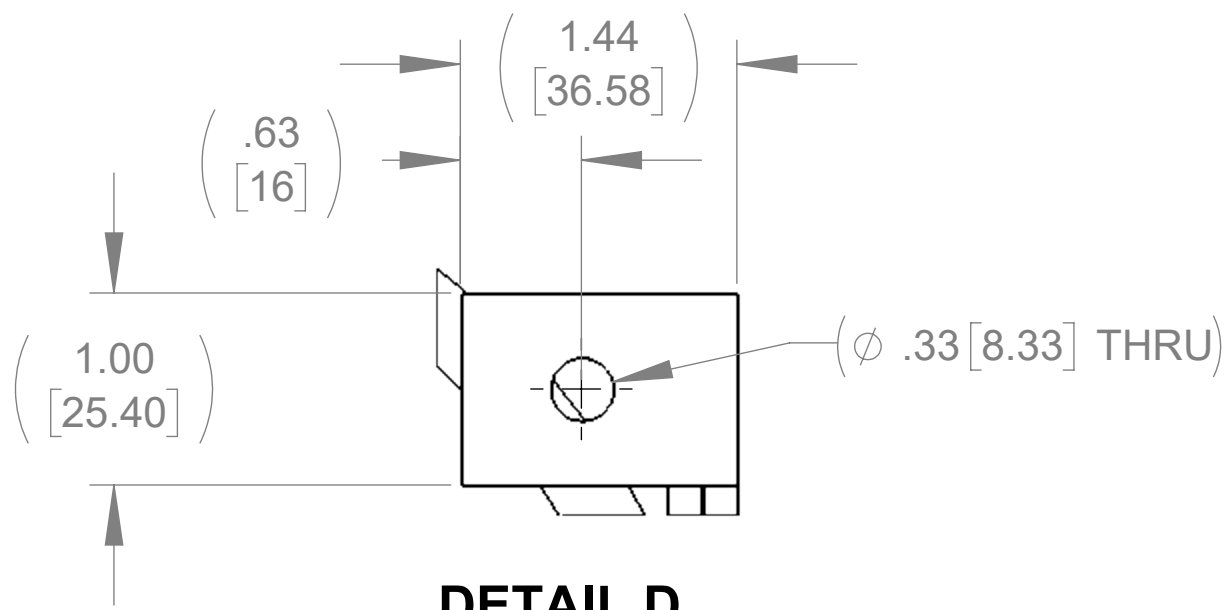
BOTTOM VIEW



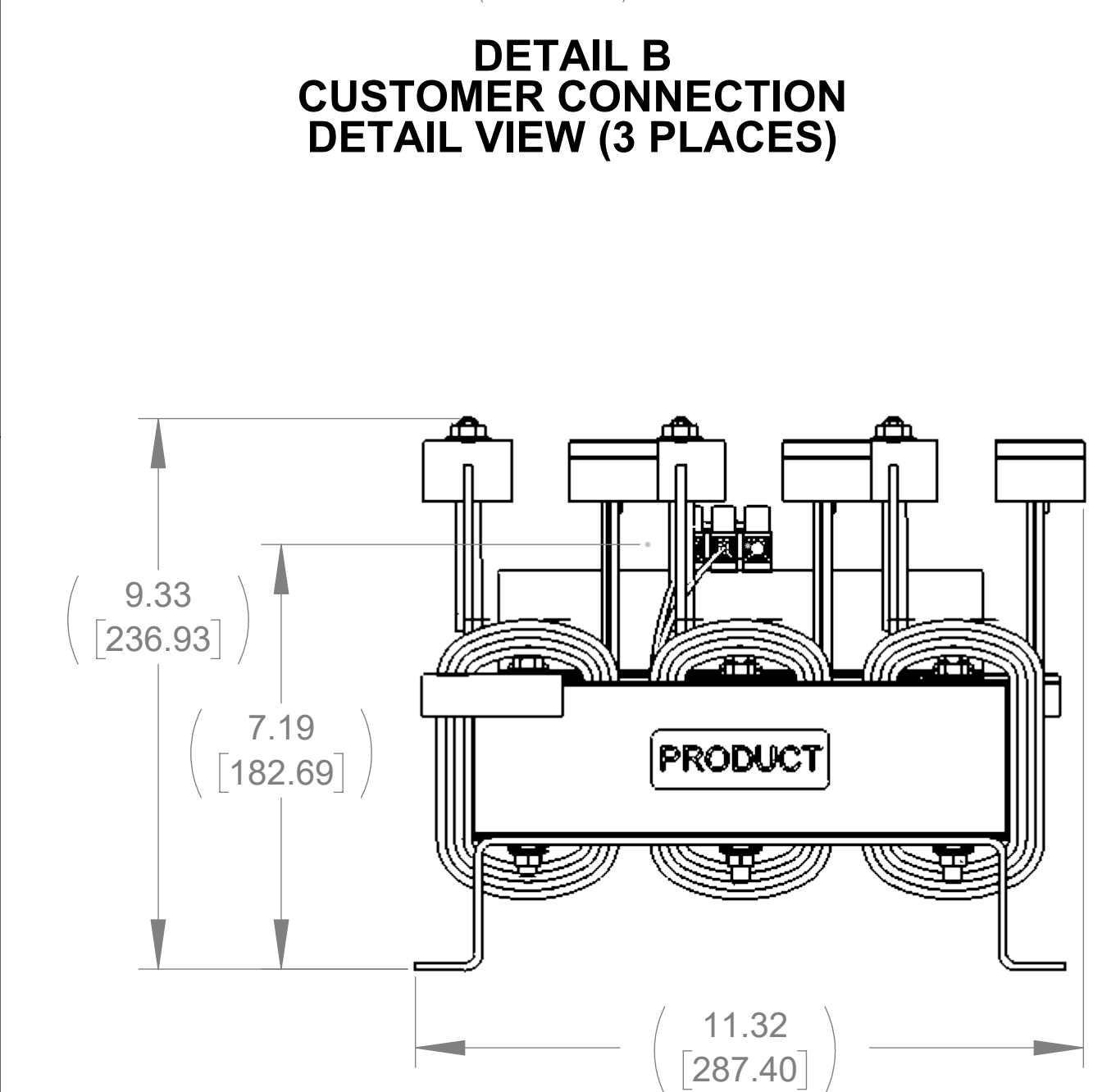
DETAIL B
CUSTOMER CONNECTION
DETAIL VIEW (3 PLACES)



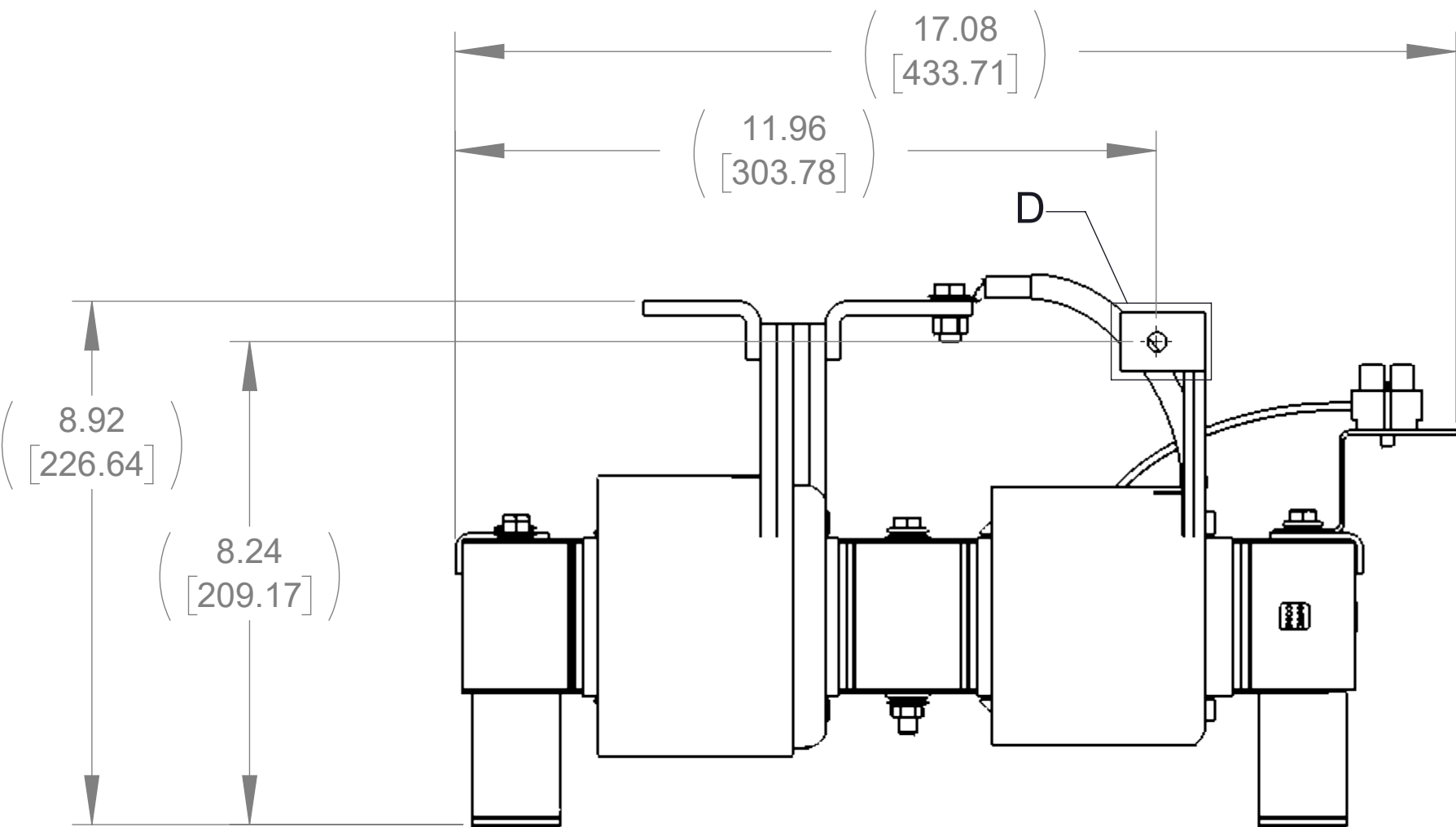
DETAIL C
CUSTOMER CONNECTION
DETAIL VIEW (3 PLACES)



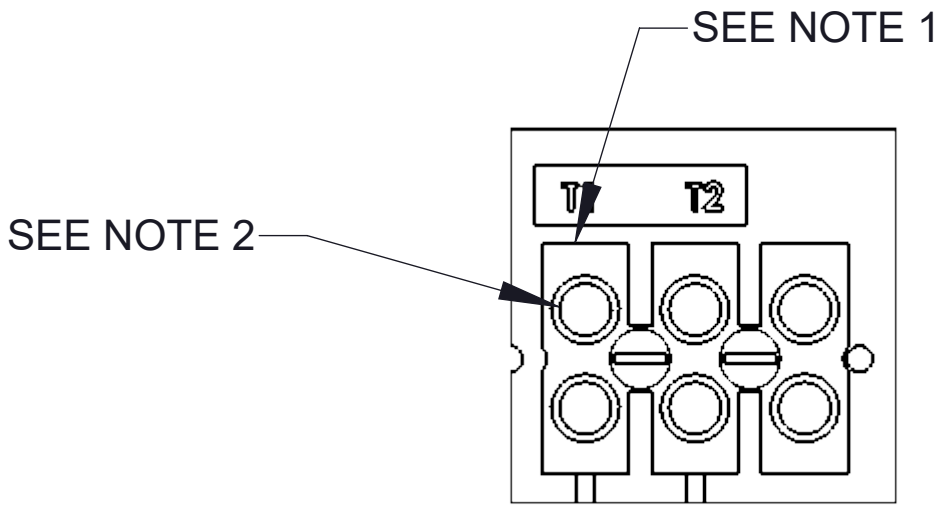
DETAIL D
CUSTOMER CONNECTION
DETAIL VIEW (3 PLACES)



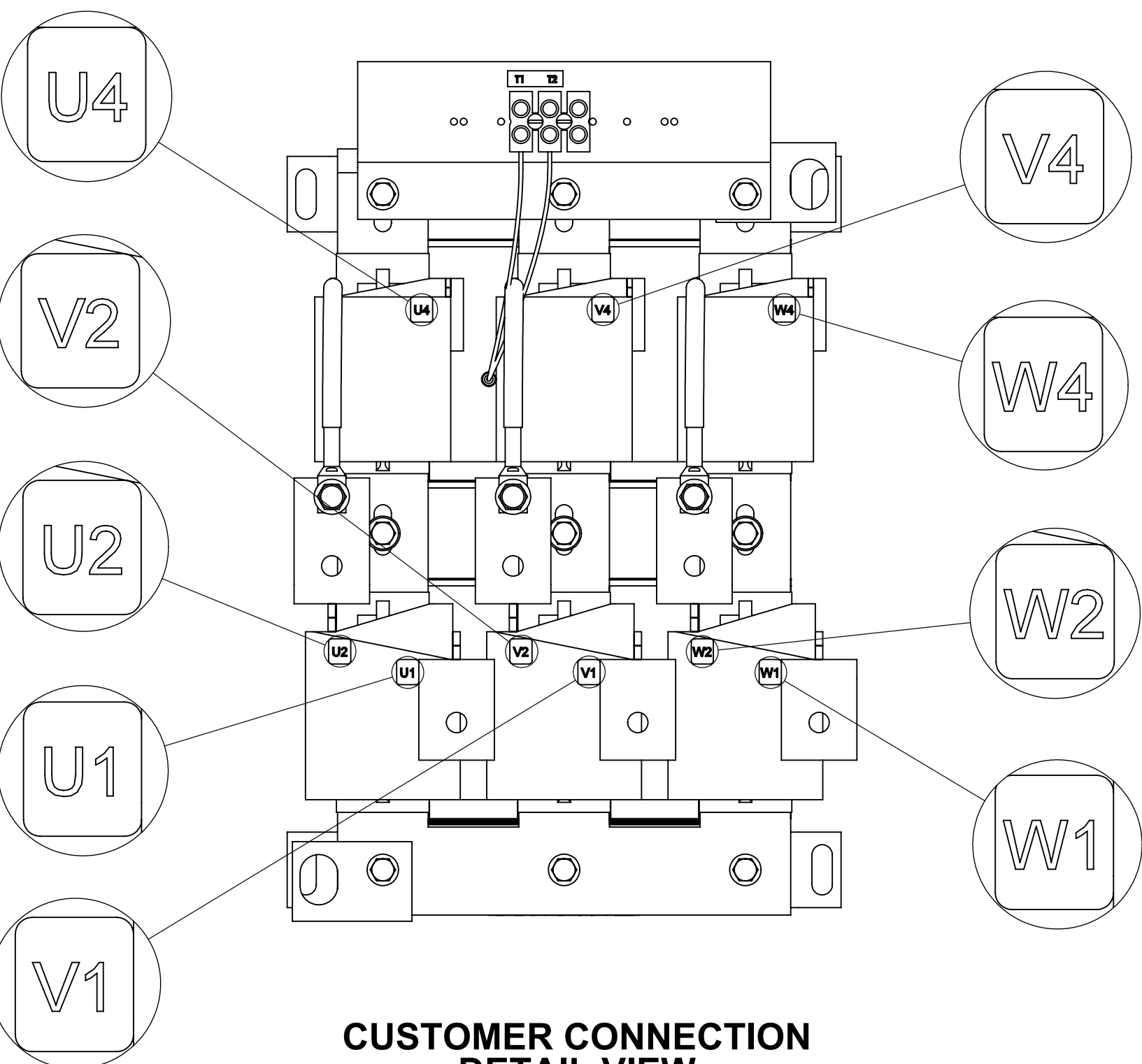
FRONT VIEW



SIDE VIEW



DETAIL A
CUSTOMER CONNECTION
DETAIL VIEW



CUSTOMER CONNECTION
DETAIL VIEW

NOTES:

1. TERMINAL WIRE RANGE: 6-14 AWG.
2. TERMINAL SCREW TIGHTENING TORQUE: 16 IN.LBS.
3. REFER TO USER MANUAL FOR FURTHER INSTRUCTIONS.
4. FILTER INCLUDES: CAP-360TP(QTY. 2) & CAP-348TP(QTY. 1).
5. CUSTOMER MUST PROVIDE PROPER COOLING AIRFLOW. MUST BE A MINIMUM OF 400 LINEAR FT/MIN.

THE COMPONENT, PART OR ASSEMBLY DESCRIBED IN THIS DOCUMENT MUST COMPLY WITH THE EU(EUROPEAN UNION) DIRECTIVE RoHS2		MATERIAL		CONFIDENTIAL AND PROPRIETARY INFORMATION THIS DOCUMENT CONTAINS CONFIDENTIAL AND PROPRIETARY INFORMATION OF MTE CORPORATION AND MAY NOT BE USED, COPIED OR DISCLOSED TO OTHERS EXCEPT WITH THE AUTHORIZED WRITTEN PERMISSION OF MTE CORPORATION		
CONTAINS <0.1% OF ANY SVHC BY WEIGHT PER REACH REGULATION				DESCRIPTION		
UNLESS OTHERWISE SPECIFIED DIMENSIONS ARE IN INCHES [MM] TOLERANCES ARE: ANGLES: ± 1 ° 1 PLACE .X: ± .1 [2.5] 2 PLACE .XX: ± .03 [0.76] 3 PLACE .XXX: ± .010 [0.254]		MTE POWER QUALITY. SOLVED. A STEEL PARTNERS COMPANY N83 W13330 Leon Road Menomonee Falls, WI 53051 USA 800.455.4683 262.253.8200		MATRIX-E, 208A, 380-415V, 50Hz, OPEN PANEL		
		DRAWN MN DATE 07/02/20				
		CHECKED MN DATE 10/19/20				
		APPROVED JG DATE 10/20/20				
				SIZE D	DWG No. CD MAEP0208C	REV 01
				SCALE 3:8	SHEET 1 OF 1	