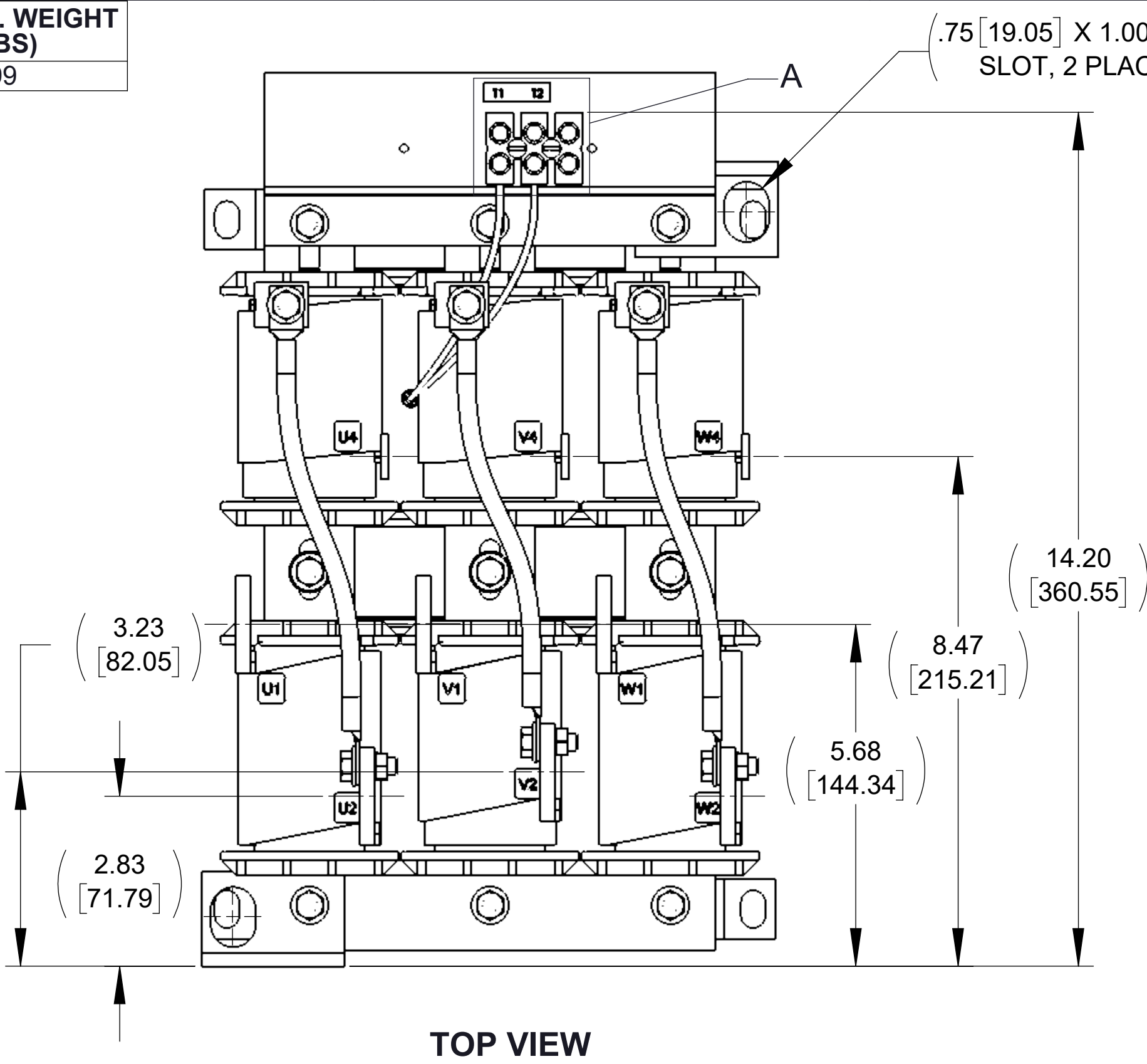
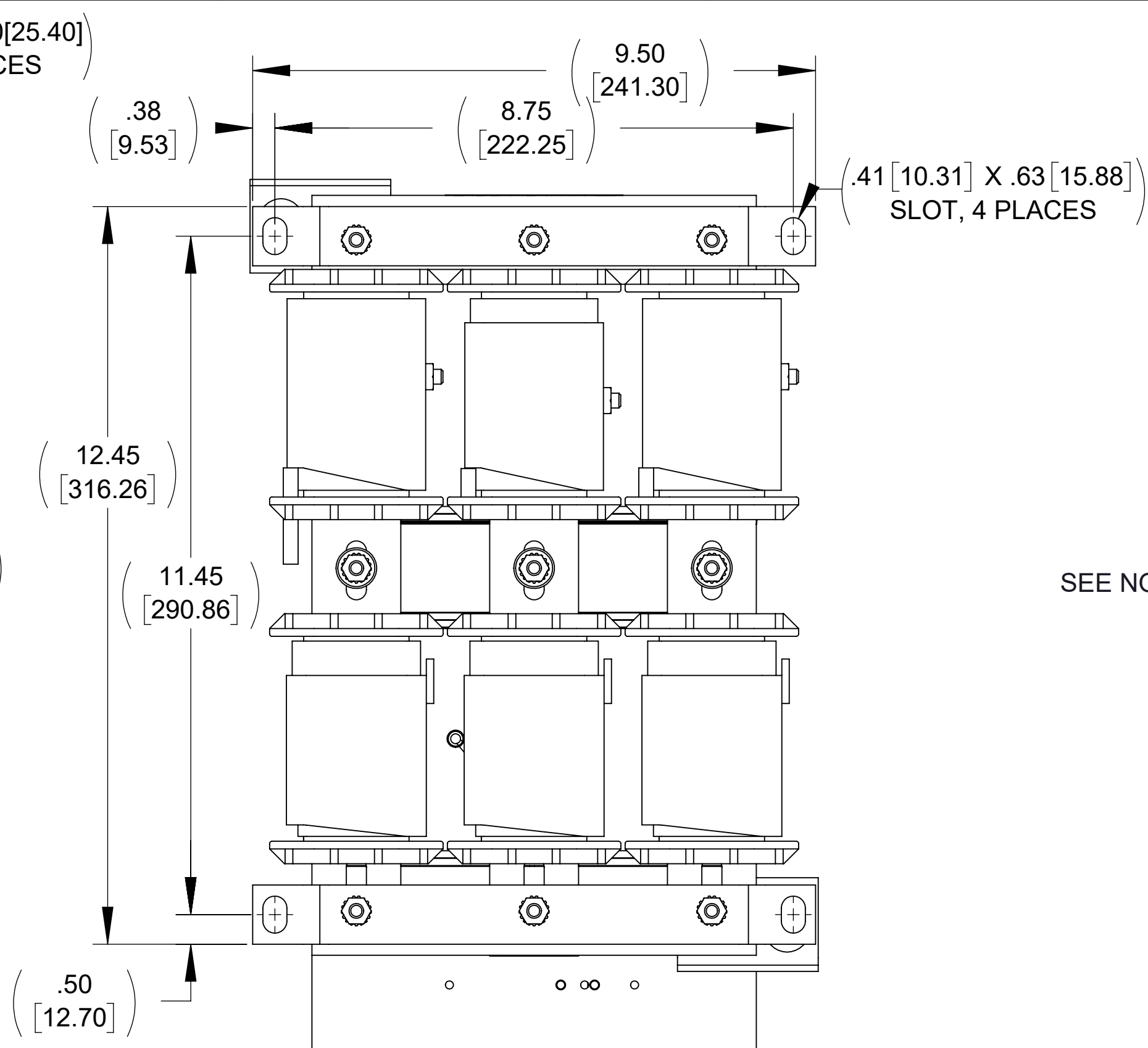


APPROX. WEIGHT
(LBS)
99

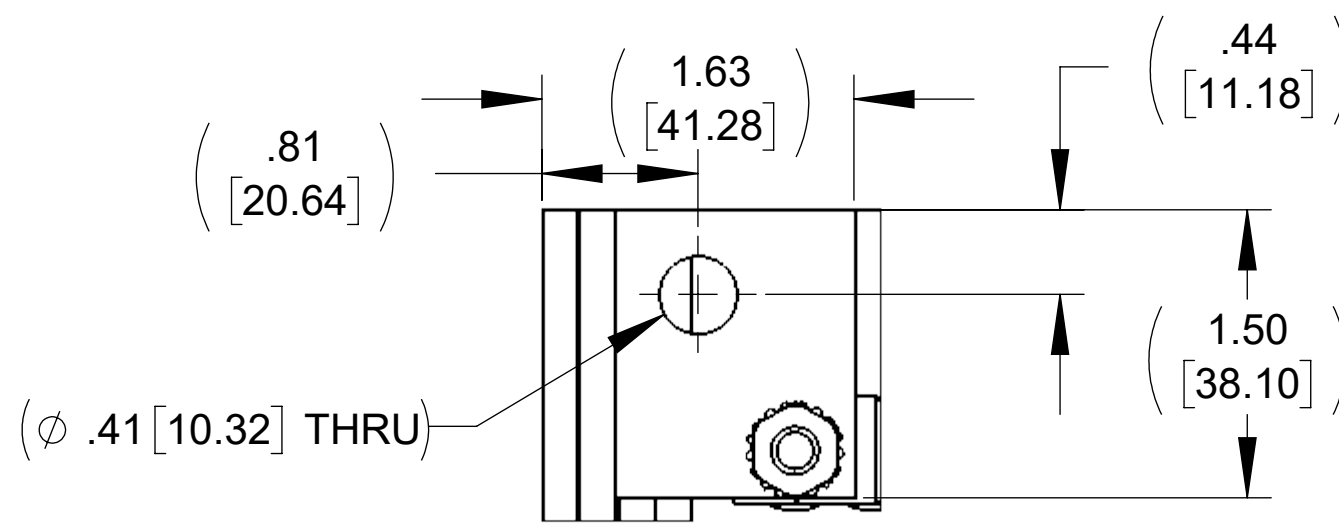
ECO No	DESCRIPTION	REV BY	DATE
M13157	UPDATE TO NEW TERMBLK	MN	10/19/20



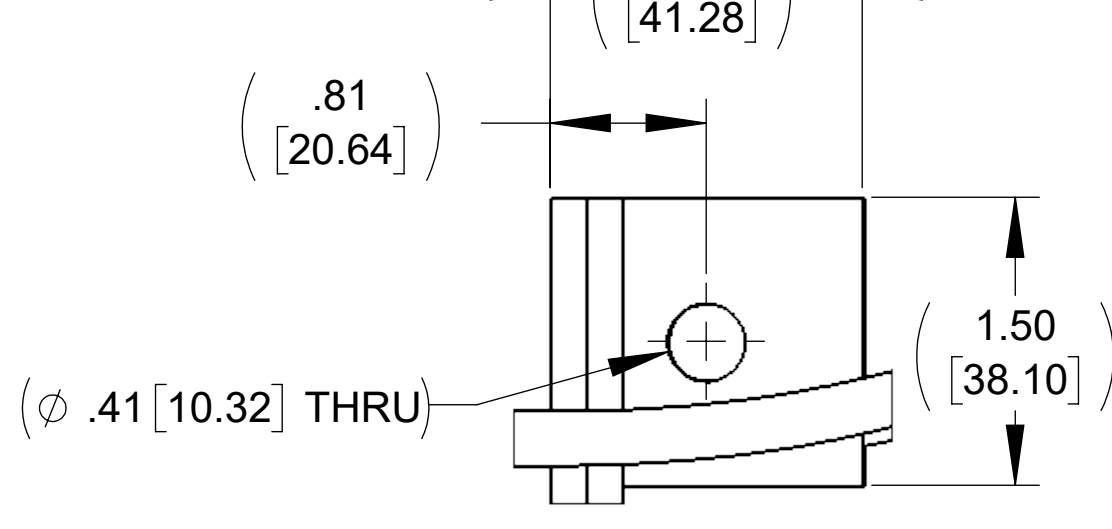
TOP VIEW



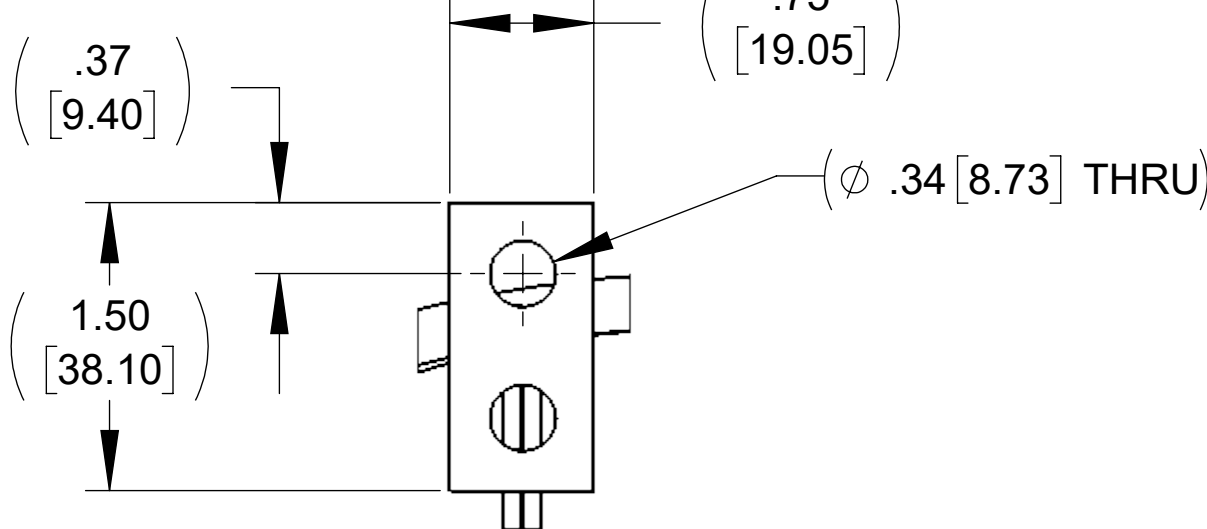
BOTTOM VIEW



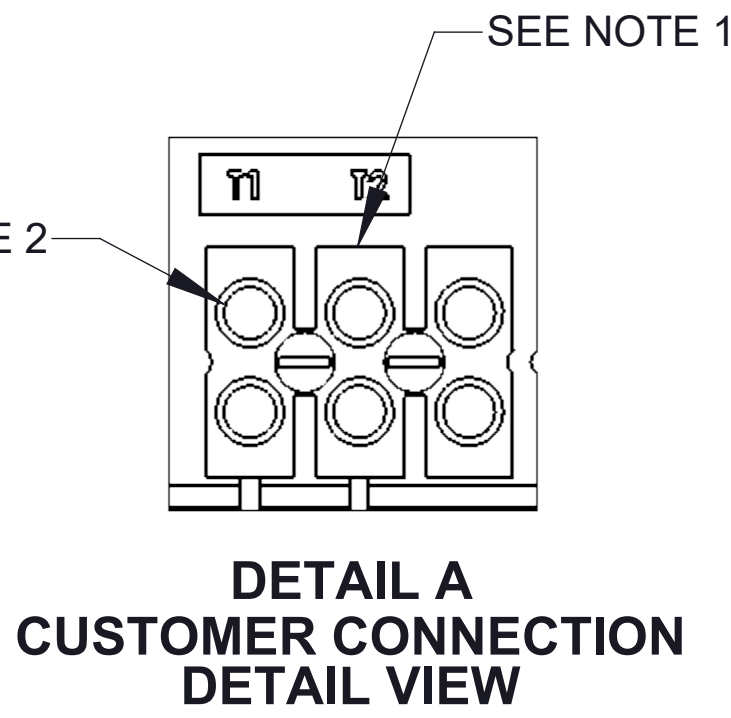
DETAIL B
CUSTOMER CONNECTION
DETAIL VIEW (3 PLACES)



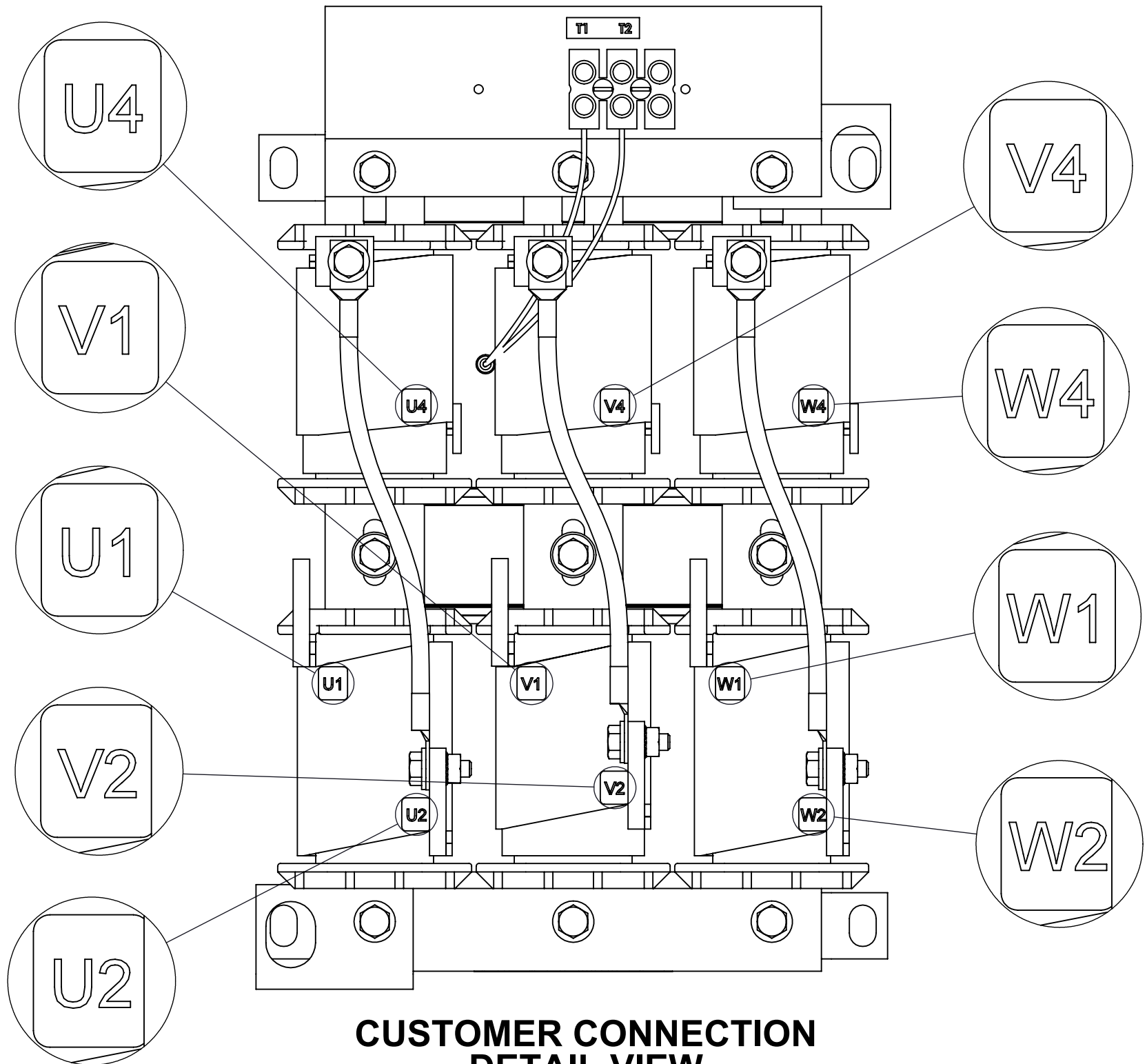
DETAIL C
CUSTOMER CONNECTION
DETAIL VIEW (3 PLACES)



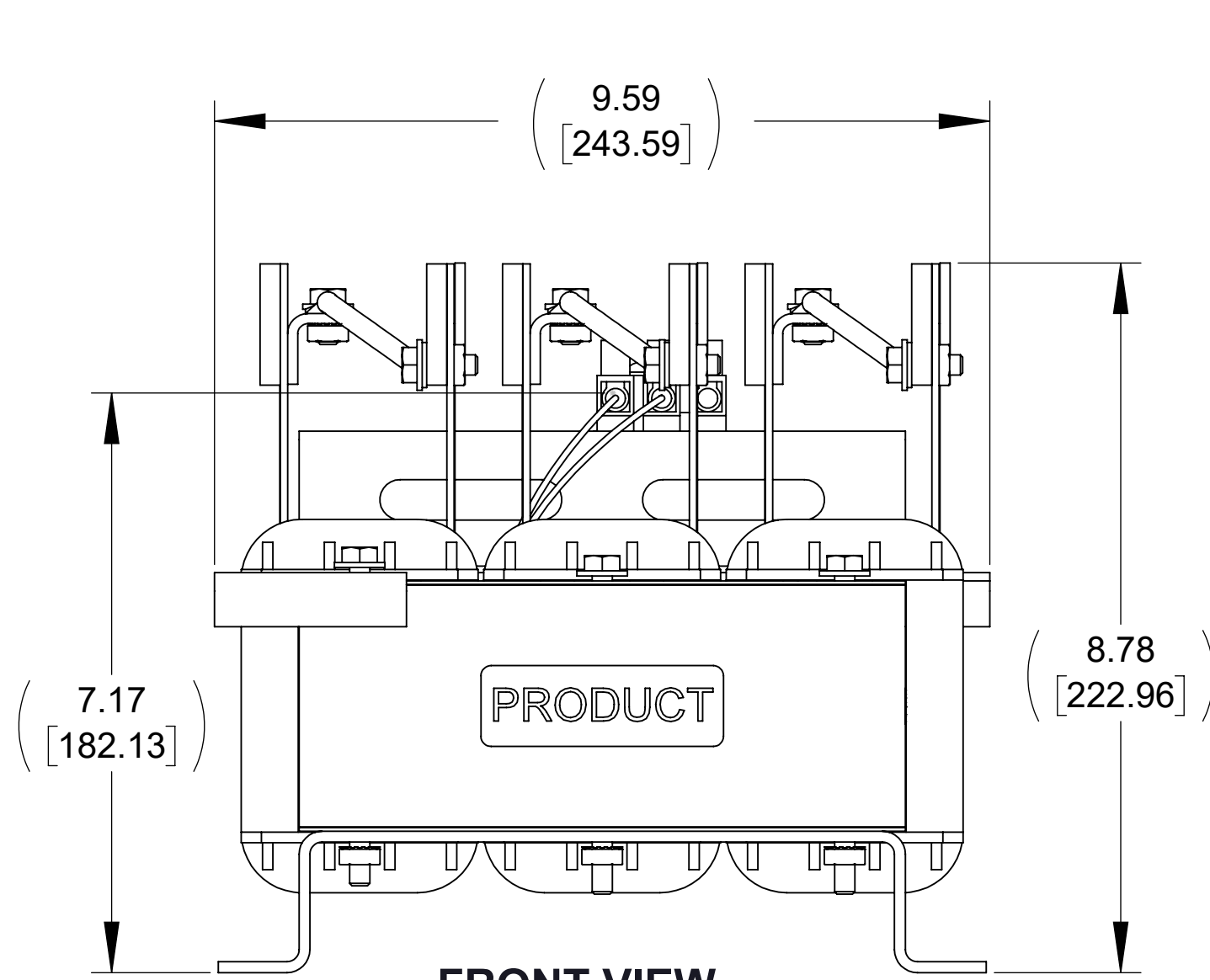
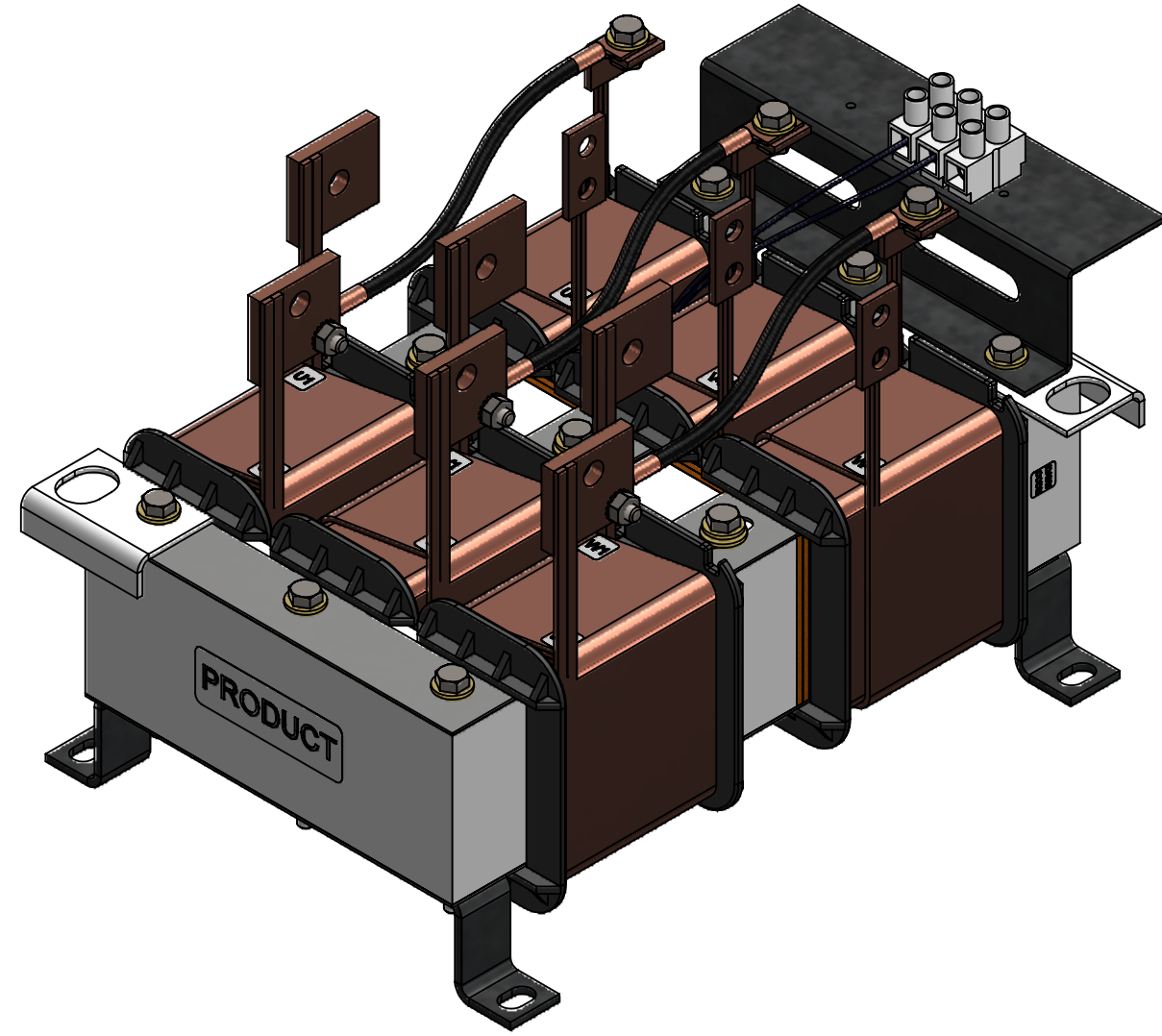
DETAIL D
CUSTOMER CONNECTION
DETAIL VIEW (3 PLACES)



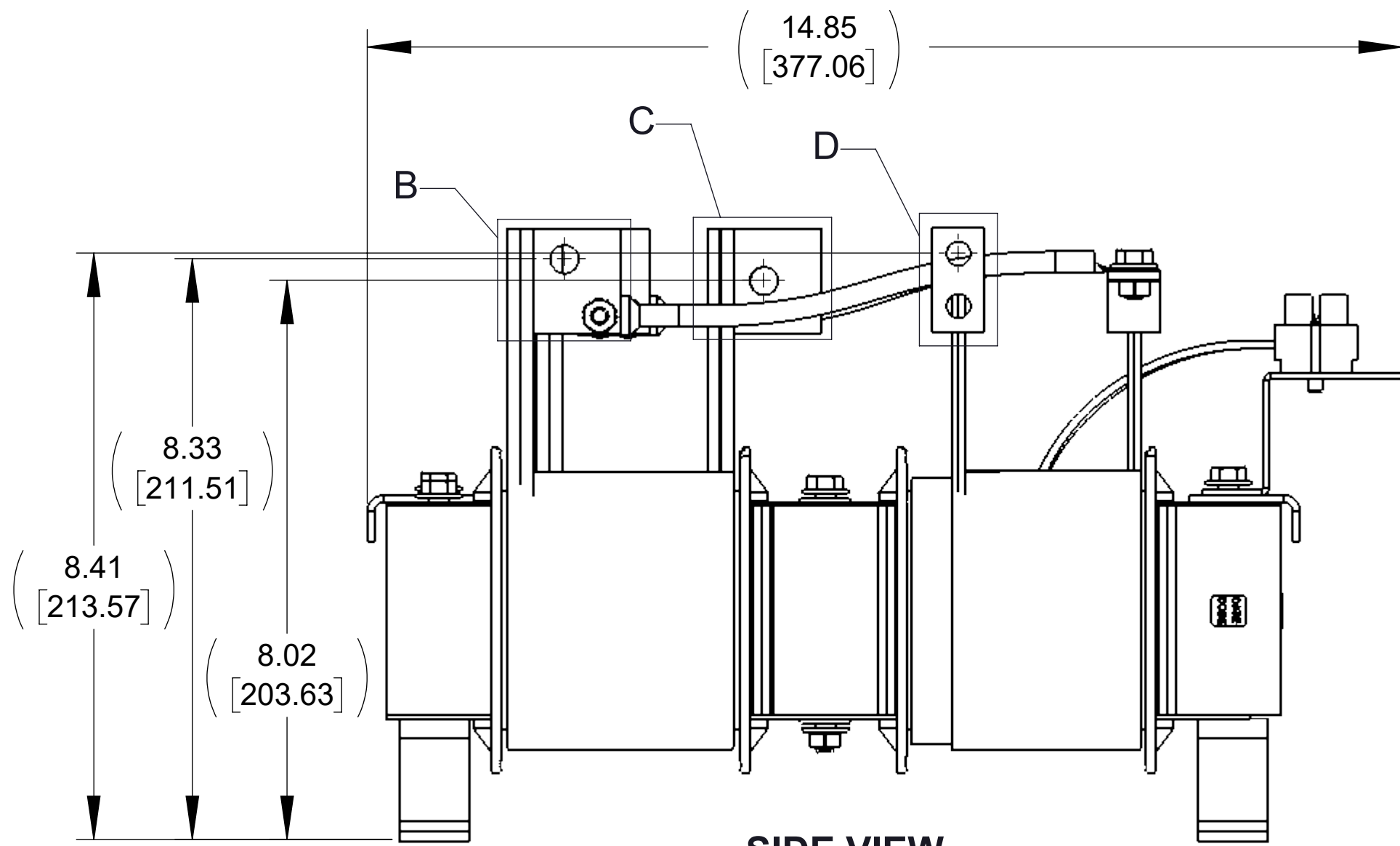
DETAIL A
CUSTOMER CONNECTION
DETAIL VIEW



CUSTOMER CONNECTION
DETAIL VIEW




FRONT VIEW



SIDE VIEW

NOTES:

1. TERMINAL WIRE RANGE: 6-14 AWG.
2. TERMINAL SCREW TIGHTENING TORQUE: 16 IN.LBS.
3. REFER TO USER MANUAL FOR FURTHER INSTRUCTIONS.
4. FILTER INCLUDES: CAP-347TP(QTY. 2).
5. CUSTOMER MUST PROVIDE PROPER COOLING AIRFLOW. MUST BE A MINIMUM OF 400 LINEAR FT/MIN.

THE COMPONENT, PART OR ASSEMBLY DESCRIBED IN THIS DOCUMENT MUST COMPLY WITH THE EU(EUROPEAN UNION) DIRECTIVE RoHS2		MATERIAL		CONFIDENTIAL AND PROPRIETARY INFORMATION THIS DOCUMENT CONTAINS CONFIDENTIAL AND PROPRIETARY INFORMATION OF MTE CORPORATION AND MAY NOT BE USED, COPIED OR DISCLOSED TO OTHERS EXCEPT WITH THE AUTHORIZED WRITTEN PERMISSION OF MTE CORPORATION			
CONTAINS <0.1% OF ANY SVHC BY WEIGHT PER REACH REGULATION							
UNLESS OTHERWISE SPECIFIED DIMENSIONS ARE IN INCHES [MM] TOLERANCES ARE: ANGLES: ± 1 ° 1 PLACE .X: ± .1 [2.5] 2 PLACE .XX: ± .03 [0.76] 3 PLACE .XXX: ± .010 [0.254]		 N83 W13330 Leon Road Menomonee Falls, WI 53051 USA 800.455-4683 262.253.8200		DESCRIPTION MATRIX-E, 128A, 480V, 60Hz, OPEN PANEL			
		DRAWN JD	DATE 07/06/20	SIZE D		DWG No. CD MAEP0128D	REV 01
		CHECKED MN	DATE 10/19/20	SCALE 1:2		SHEET 1 OF 1	
		APPROVED JG	DATE 10/20/20				