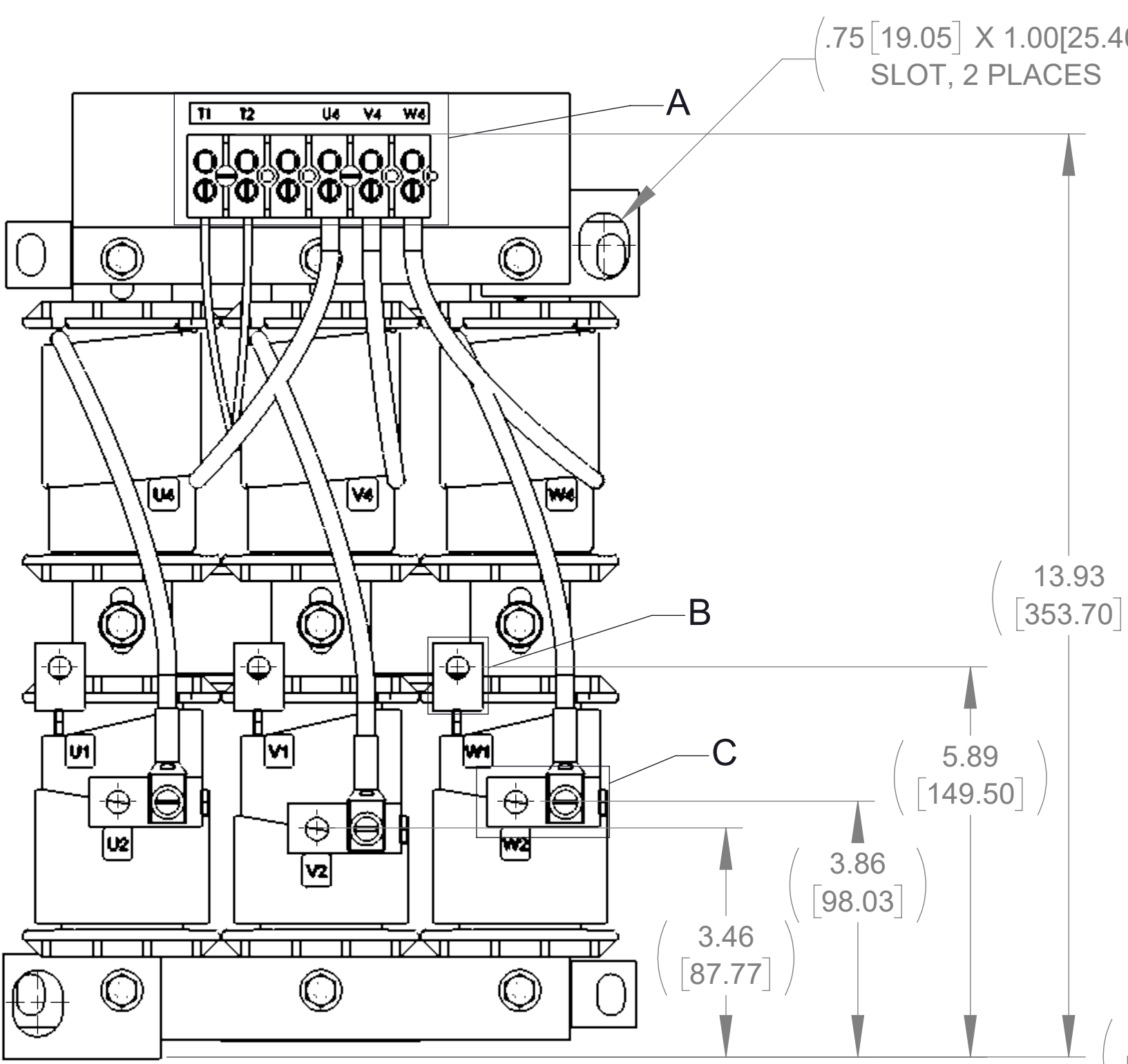
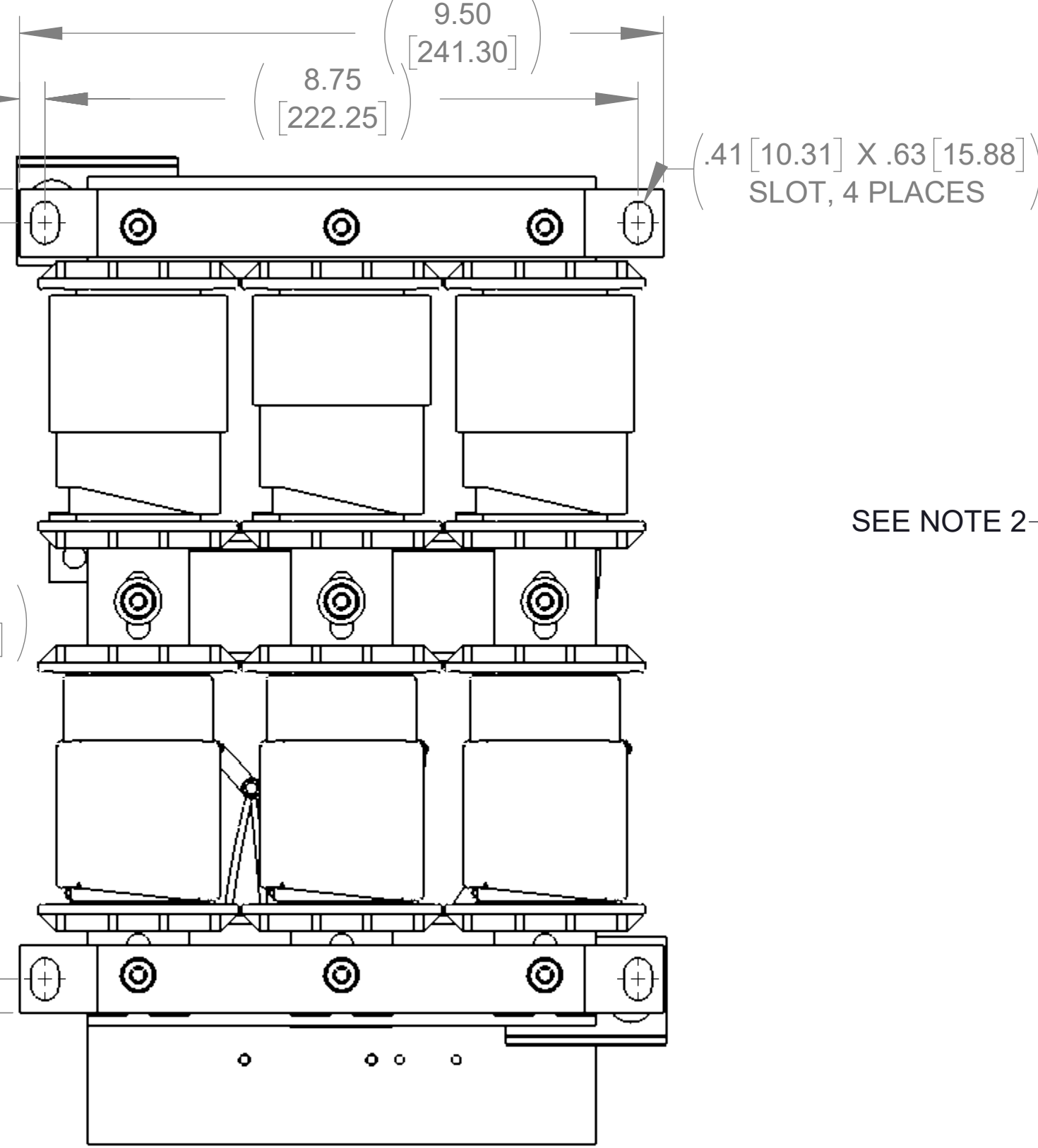


APPROX. WEIGHT  
(LBS)  
86

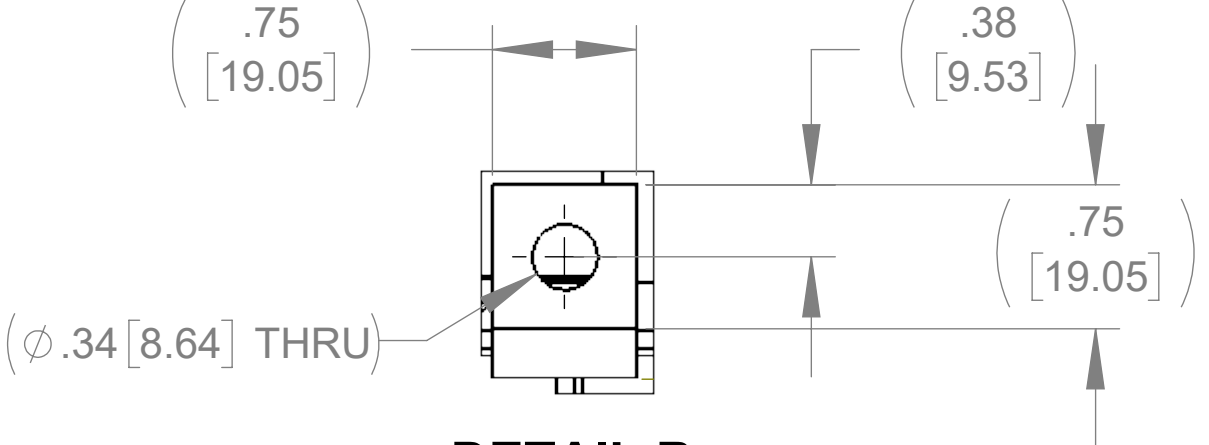
ECO No	DESCRIPTION	REV BY	DATE



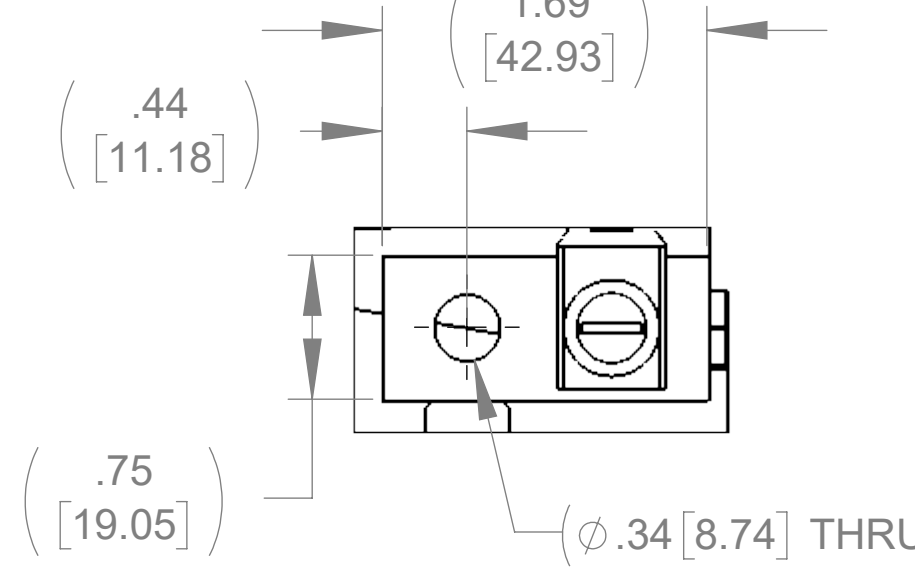
TOP VIEW



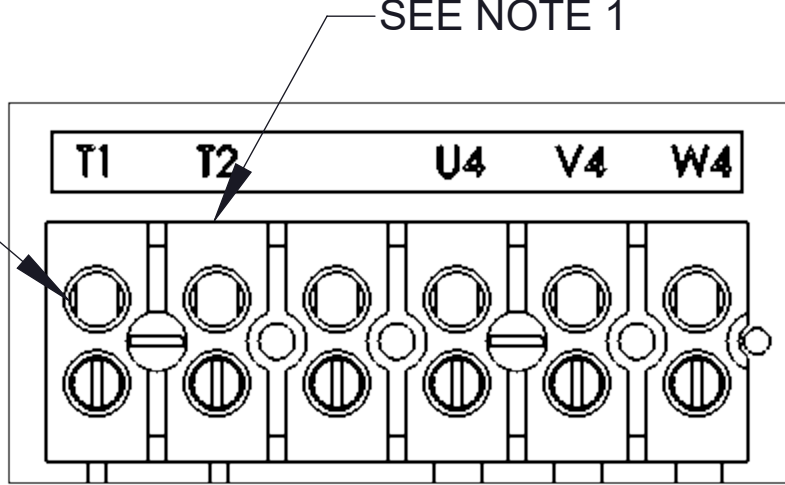
BOTTOM VIEW



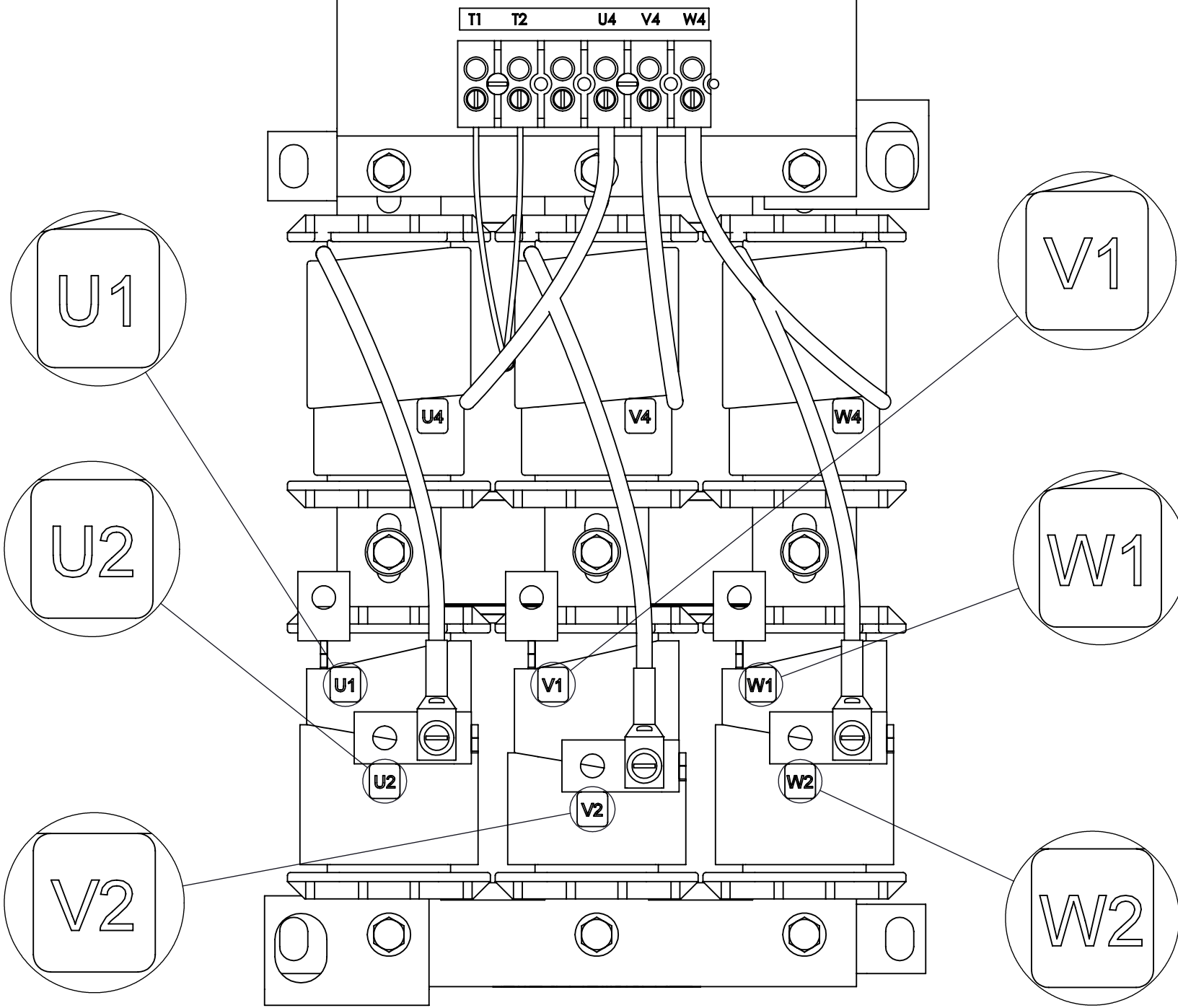
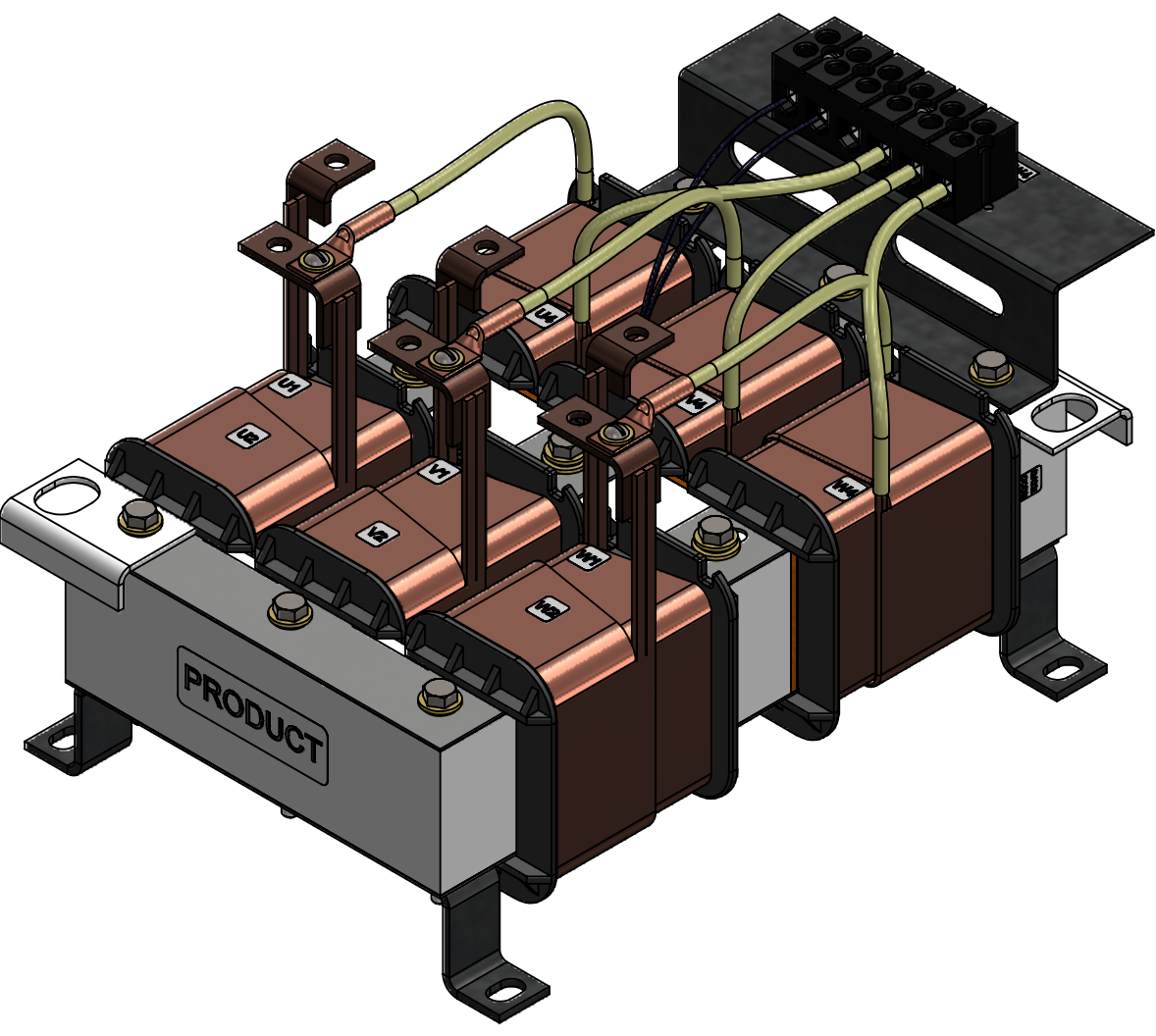
DETAIL B  
CUSTOMER CONNECTION  
DETAIL VIEW (3 PLACES)



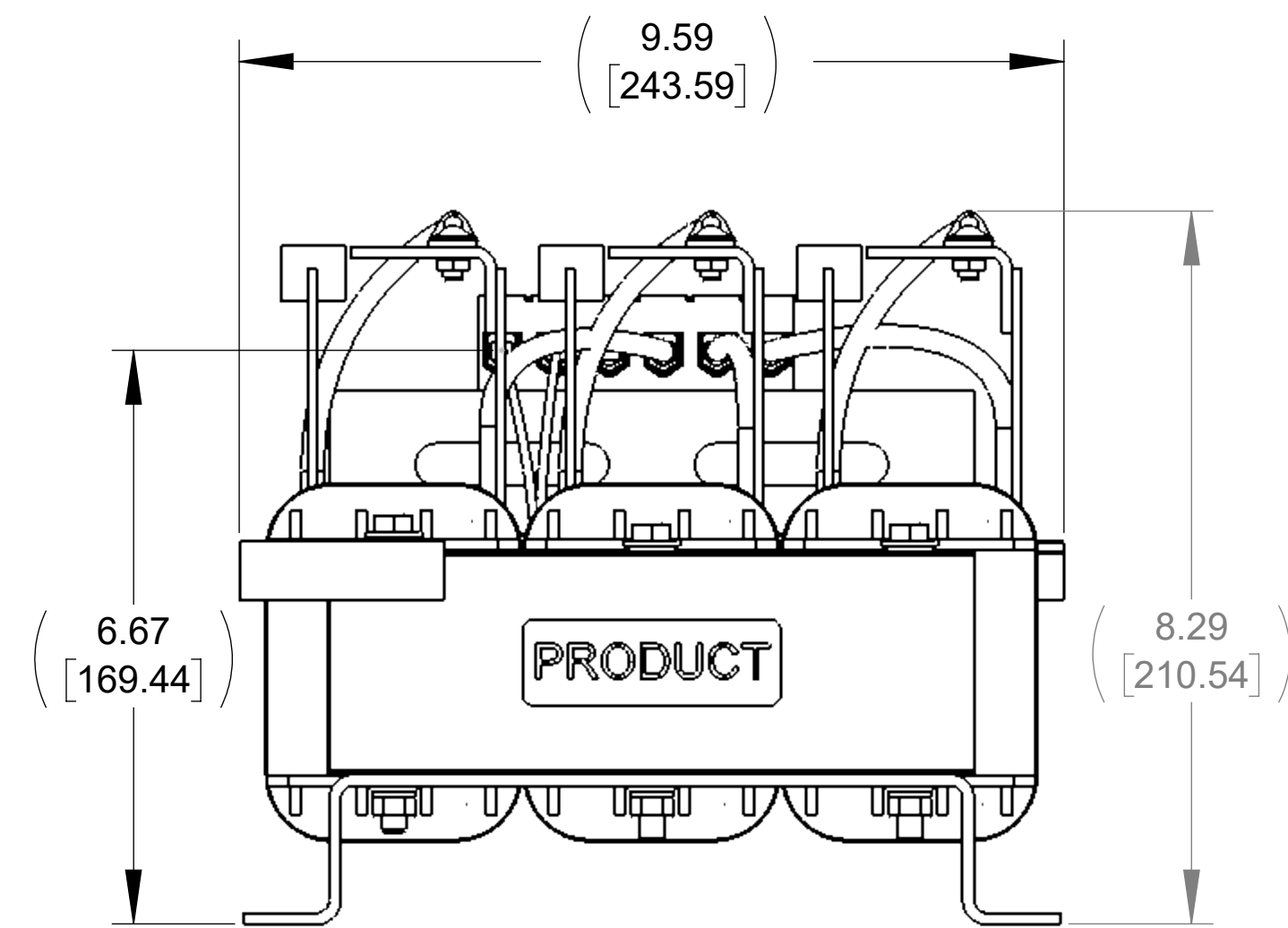
DETAIL C  
CUSTOMER CONNECTION  
DETAIL VIEW (3 PLACES)



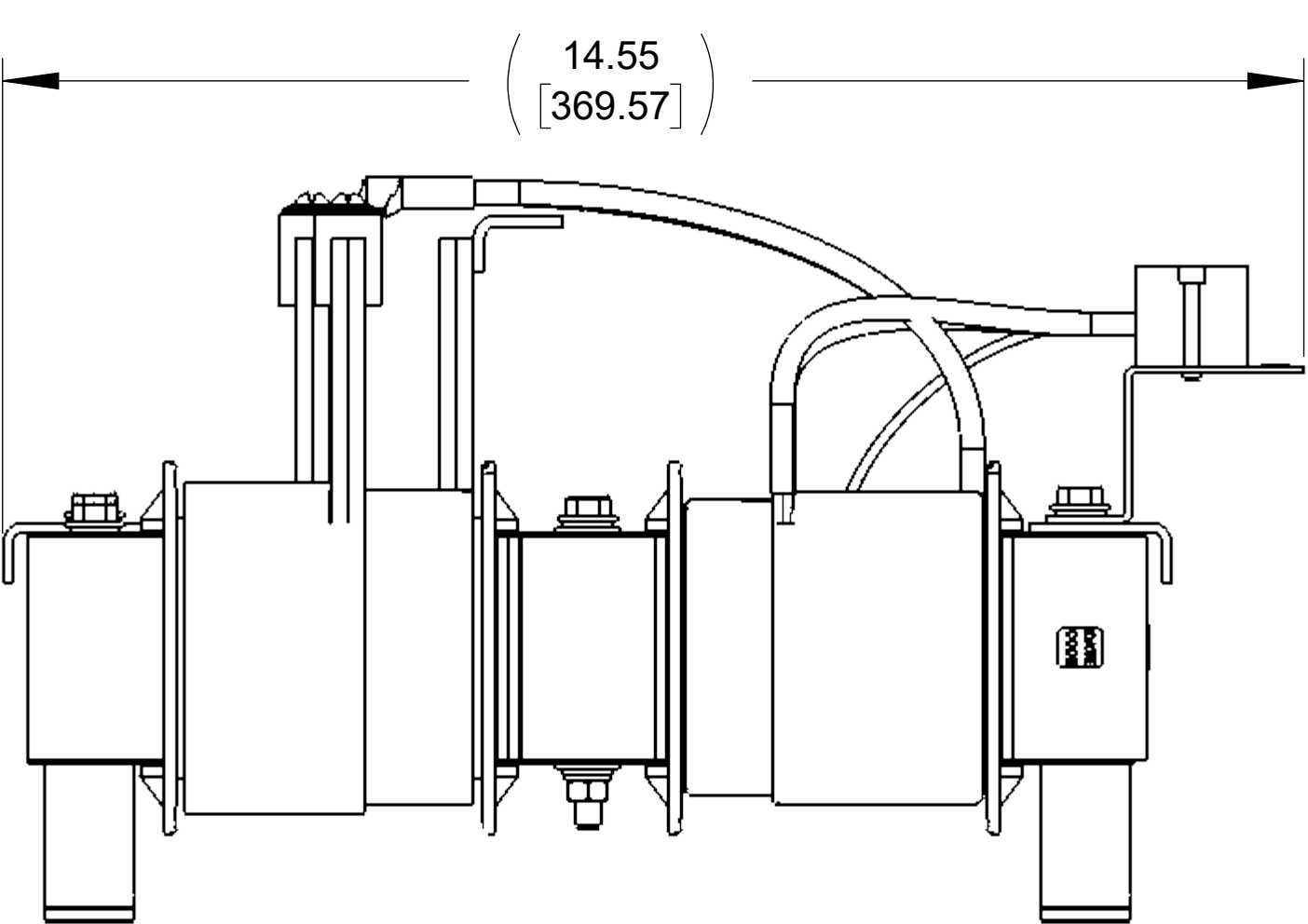
DETAIL A  
CUSTOMER CONNECTION  
DETAIL VIEW



CUSTOMER CONNECTION  
DETAIL VIEW



FRONT VIEW



SIDE VIEW

NOTES:

1. TERMINAL WIRE RANGE: 4-18 AWG.
2. TERMINAL SCREW TIGHTENING TORQUE: 16 IN.LBS.
3. REFER TO USER MANUAL FOR FURTHER INSTRUCTIONS.
4. FILTER INCLUDES: CAP-348TP(QTY. 2).
5. CUSTOMER MUST PROVIDE PROPER COOLING AIRFLOW. MUST BE A MINIMUM OF 400 LINEAR FT/MIN.

THE COMPONENT, PART OR ASSEMBLY DESCRIBED IN THIS DOCUMENT MUST COMPLY WITH THE EU(EUROPEAN UNION) DIRECTIVE RoHS2		MATERIAL		CONFIDENTIAL AND PROPRIETARY INFORMATION THIS DOCUMENT CONTAINS CONFIDENTIAL AND PROPRIETARY INFORMATION OF MTE CORPORATION AND MAY NOT BE USED, COPIED OR DISCLOSED TO OTHERS EXCEPT WITH THE AUTHORIZED WRITTEN PERMISSION OF MTE CORPORATION	
CONTAINS <0.1% OF ANY SVHC BY WEIGHT PER REACH REGULATION				DESCRIPTION	
UNLESS OTHERWISE SPECIFIED DIMENSIONS ARE IN INCHES [MM] TOLERANCES ARE: ANGLES: ± 1 ° 1 PLACE .X: ± .1 [2.5] 2 PLACE .XX: ± .03 [0.76] 3 PLACE .XXX: ± .010 [0.254]		<b>MTE</b> POWER QUALITY. SOLVED. A STEEL PARTNERS COMPANY N83 W13330 Leon Road Menomonee Falls, WI 53051 USA 800.455-4683 262.253.8200		MATRIX-E, 103A, 380-415V, 50Hz, OPEN PANEL	
DRAWN MN		DATE 07/01/20		SIZE D	
CHECKED MN		DATE 07/06/20		DWG No. CD MAEP0103C	
APPROVED JG		DATE 07/07/20		REV 00	
SCALE 1:2				SHEET 1 OF 1	