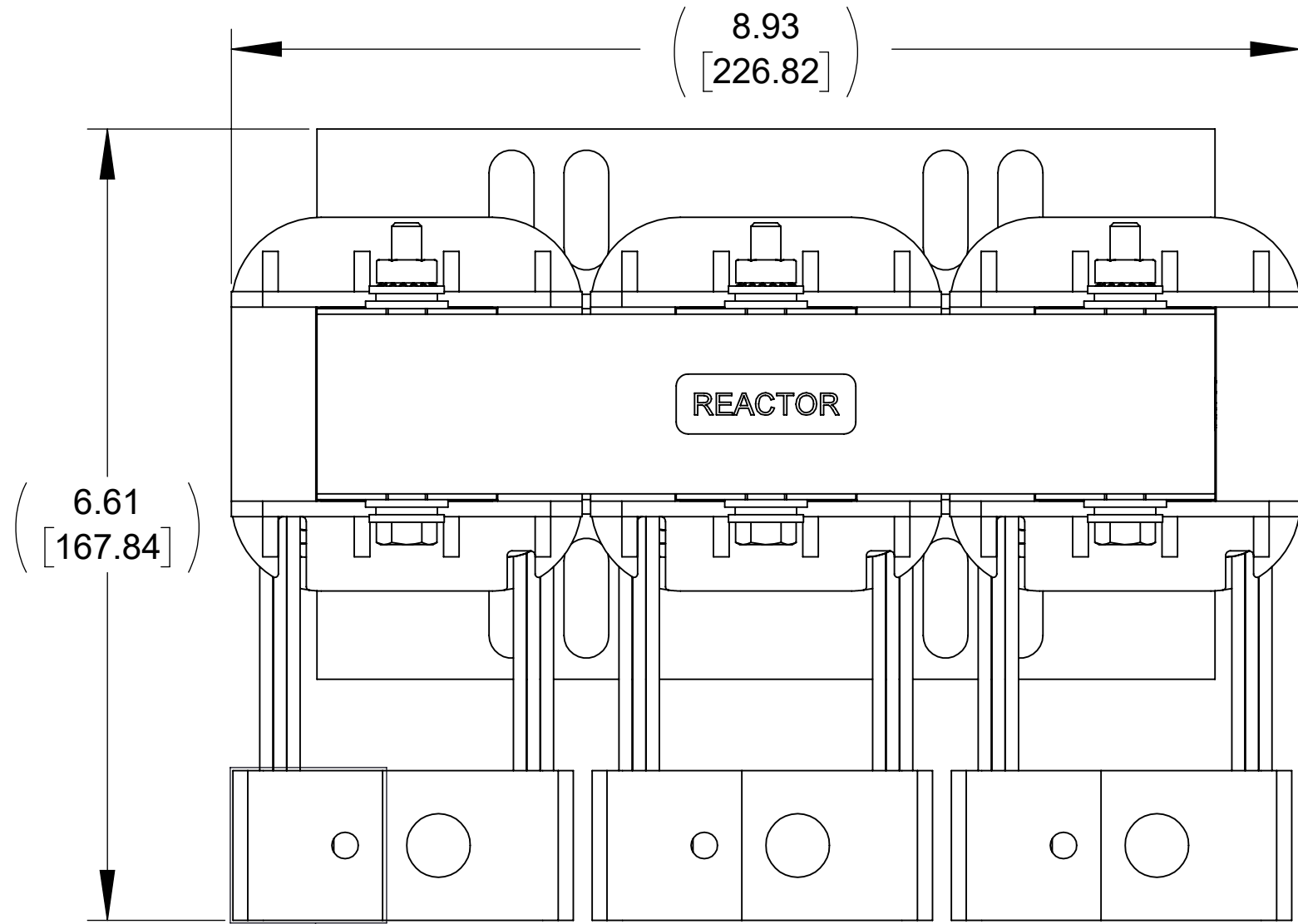
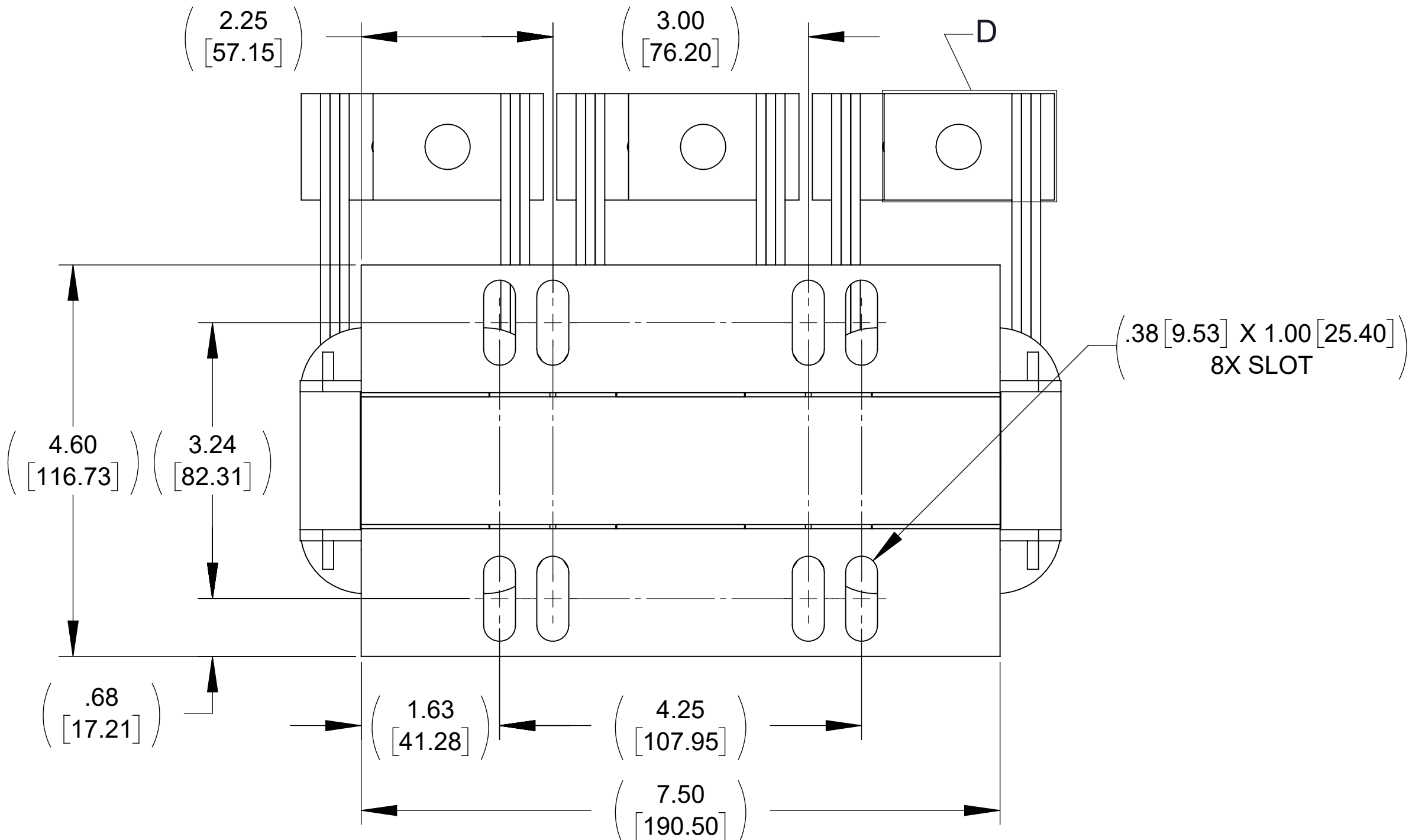


APPROX. WEIGHT  
(LBS)  
30

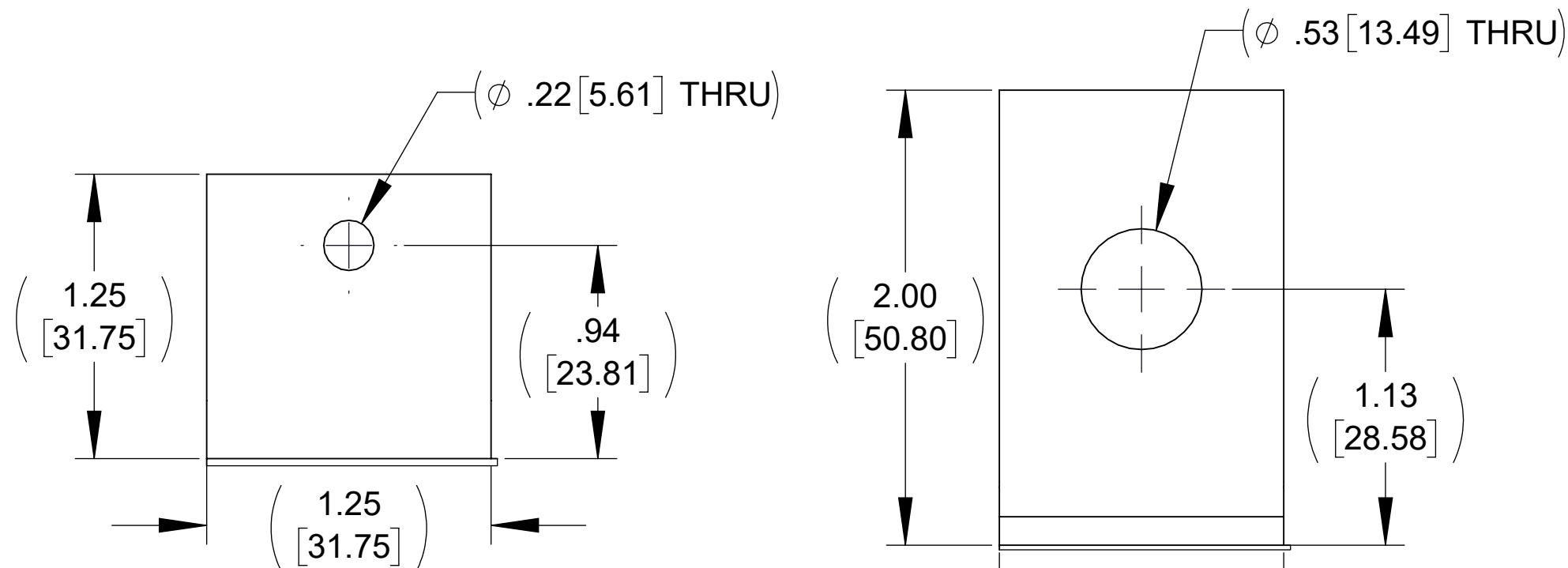
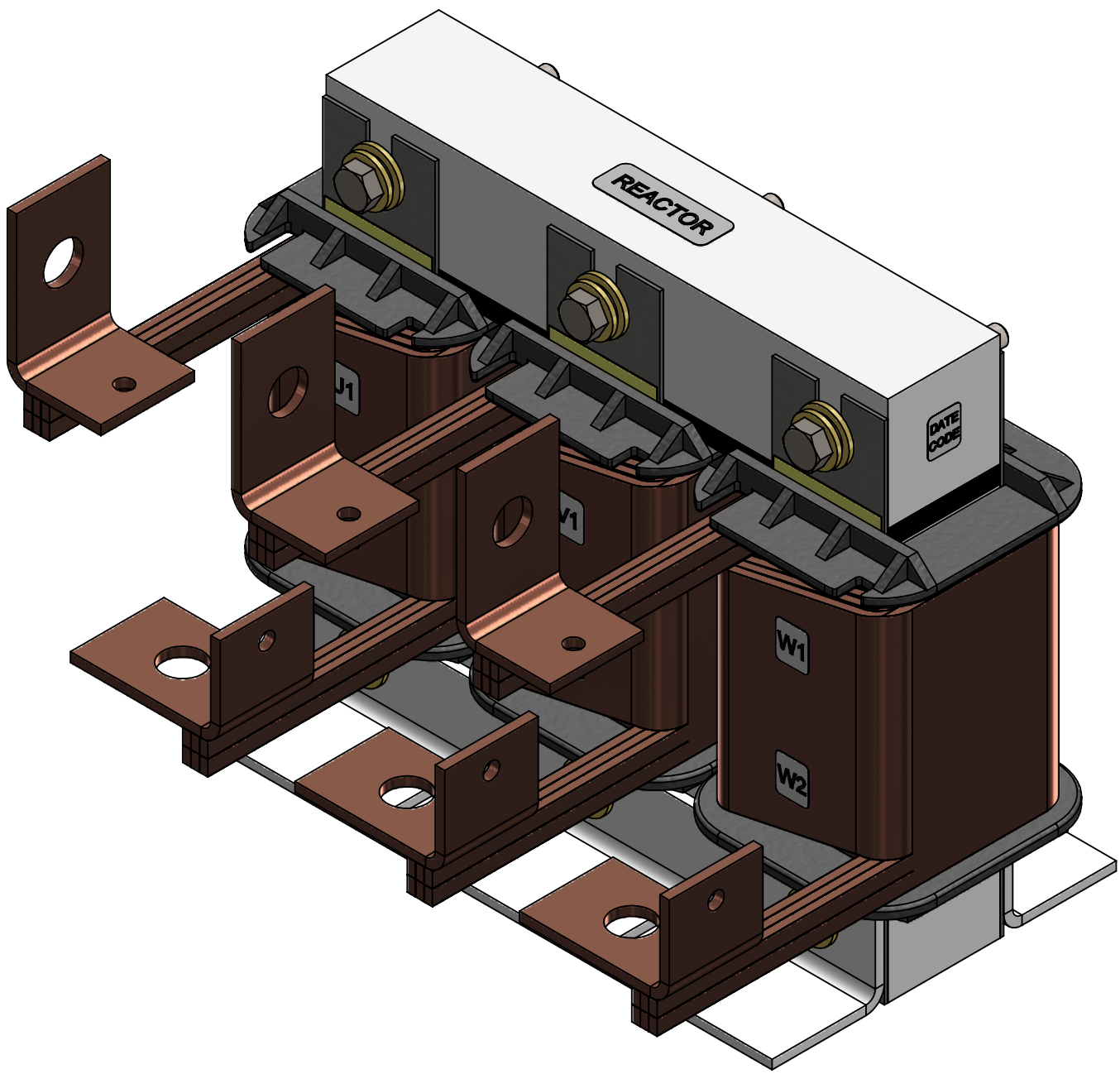
| ECO No | DESCRIPTION                   | REV BY | DATE     |
|--------|-------------------------------|--------|----------|
| M14114 | ADDED RESISTOR DETAIL SHEET 2 | CB     | 11/18/21 |



TOP VIEW

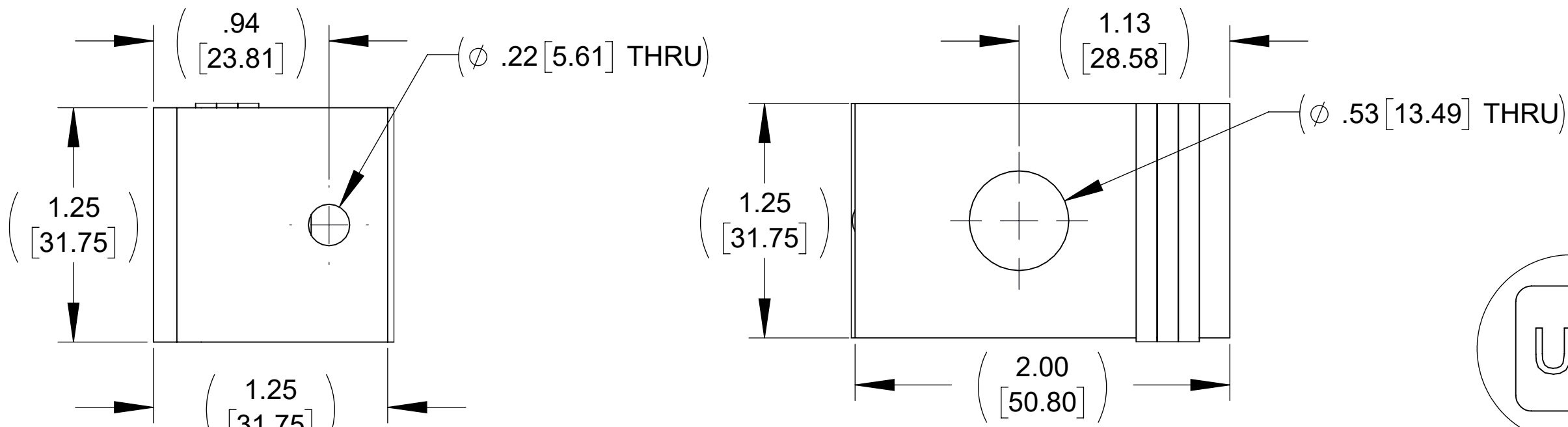


BOTTOM VIEW



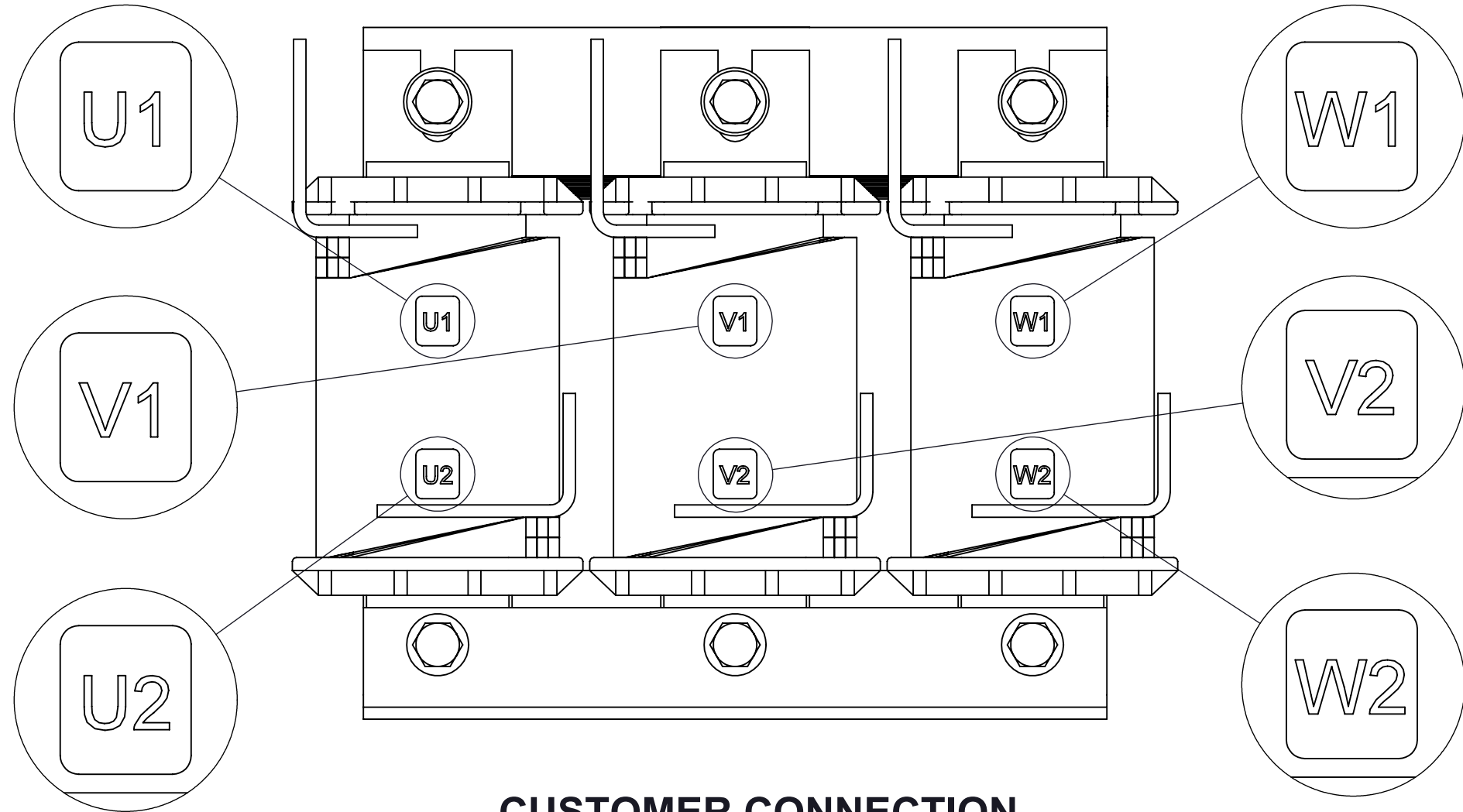
DETAIL A  
(3 PLACES)

DETAIL B  
(3 PLACES)

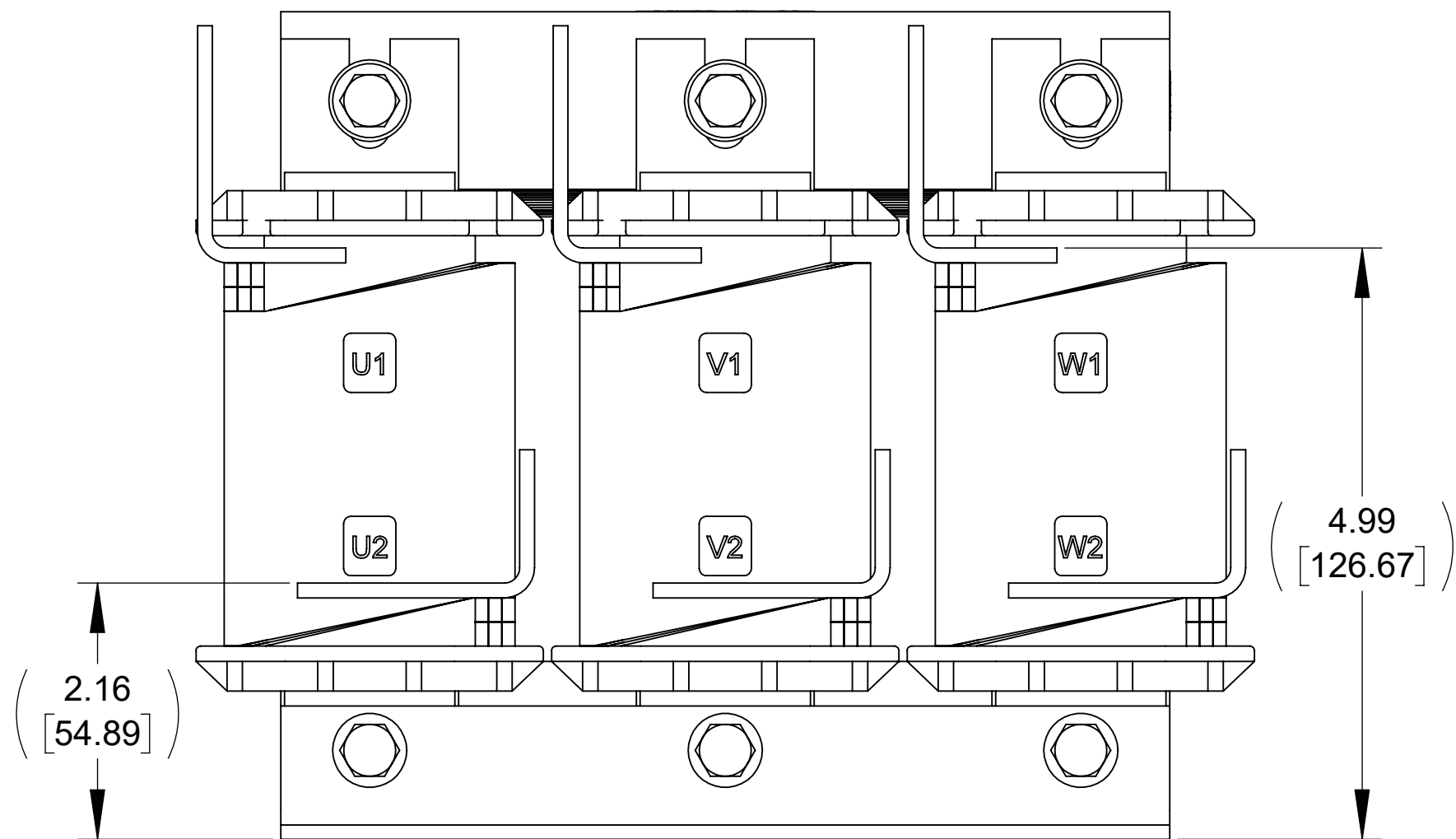


DETAIL C  
(3 PLACES)

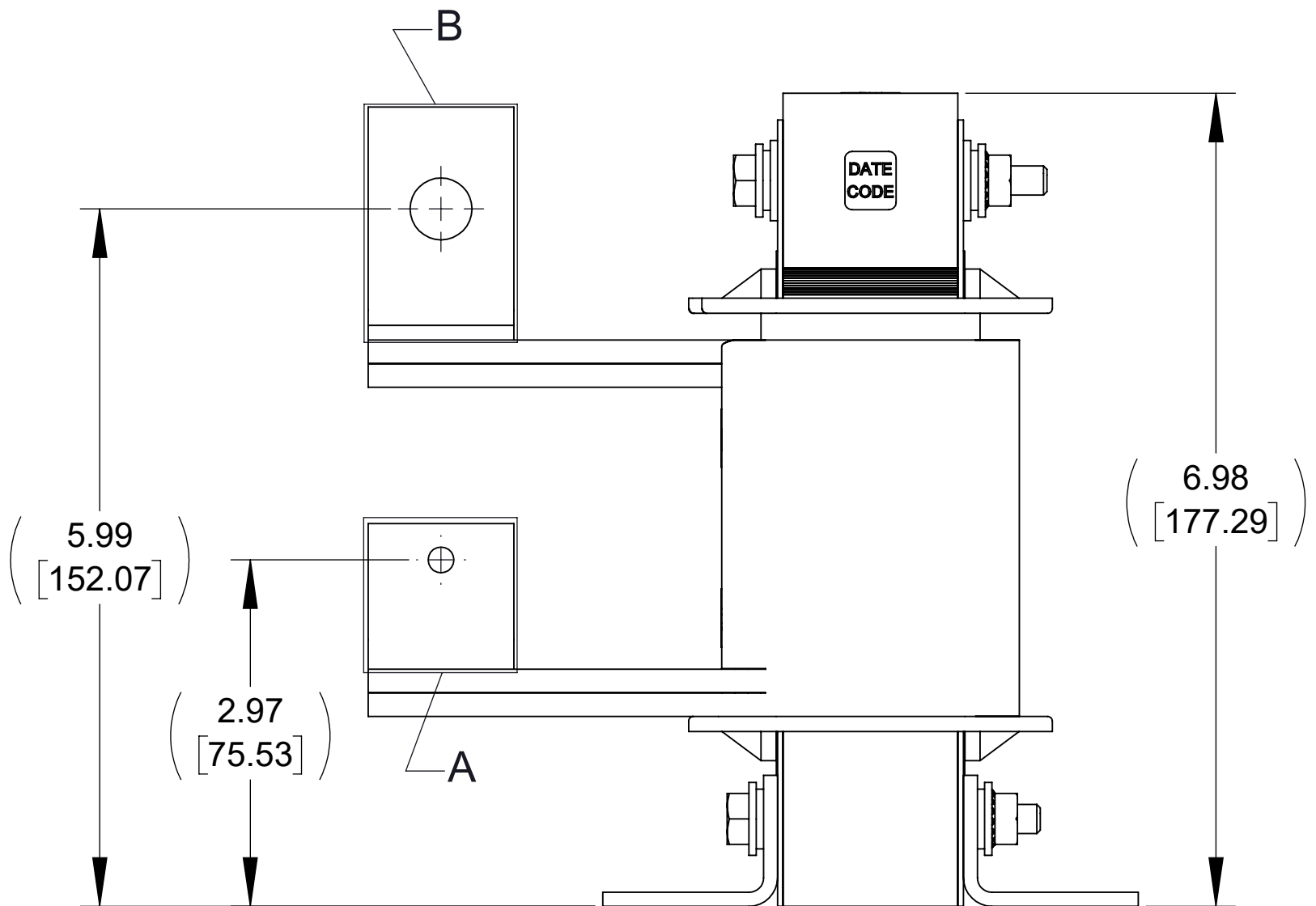
DETAIL D  
(3 PLACES)



CUSTOMER CONNECTION  
DETAIL VIEW



FRONT VIEW



SIDE VIEW

NOTES:

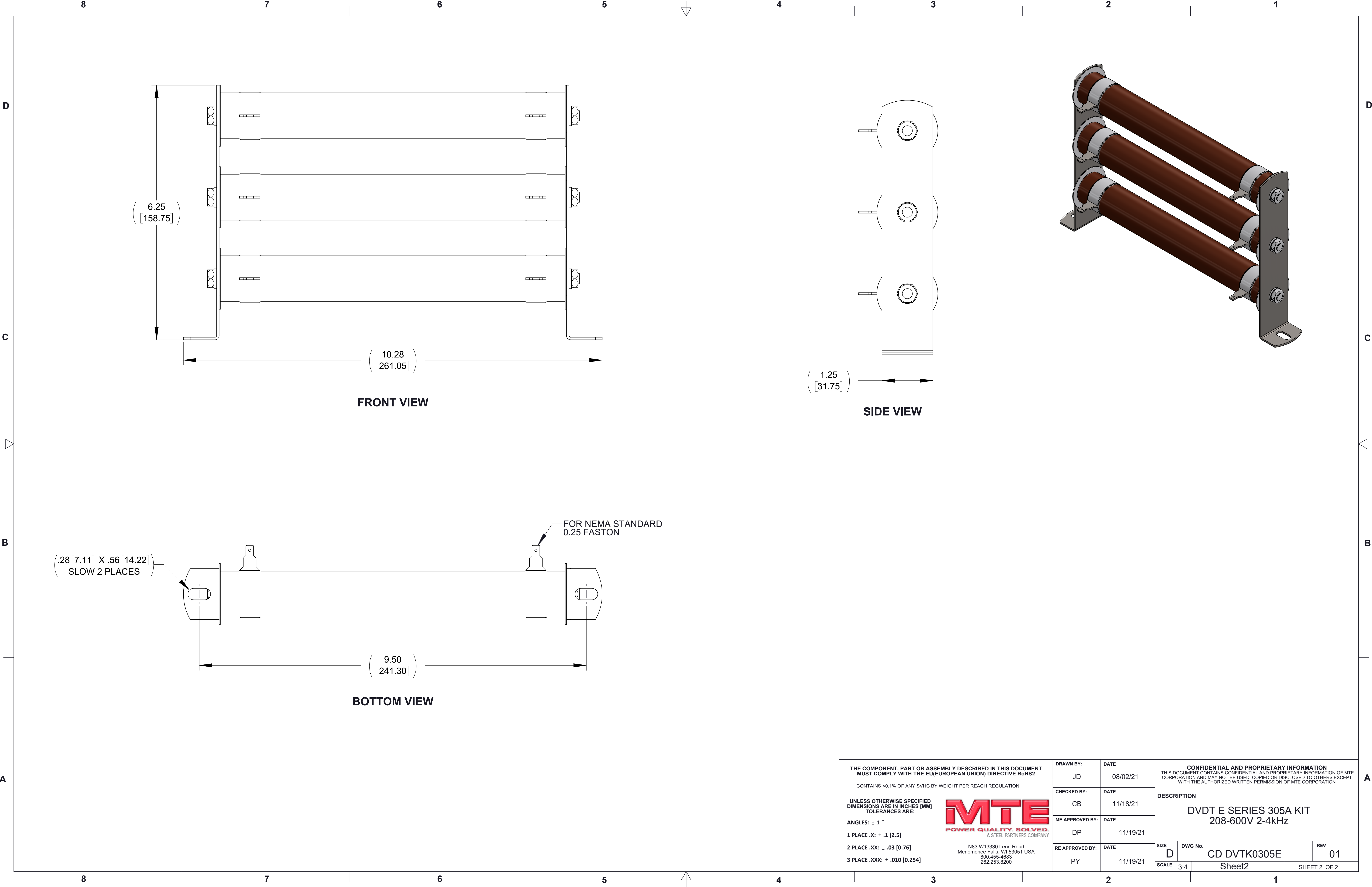
1. REFER TO USER MANUAL FOR COMPLETE INSTALLATION INSTRUCTIONS.
2. FILTER INCLUDES: RESISTOR-071 (QTY. 1).

|  |  |                       |                  |  |           |
|--|--|-----------------------|------------------|--|-----------|
| THE COMPONENT, PART OR ASSEMBLY DESCRIBED IN THIS DOCUMENT MUST COMPLY WITH THE EU(EUROPEAN UNION) DIRECTIVE RoHS2   |  | DRAWN BY:<br>JD       | DATE<br>08/02/21 | CONFIDENTIAL AND PROPRIETARY INFORMATION<br>THIS DOCUMENT CONTAINS CONFIDENTIAL AND PROPRIETARY INFORMATION OF MTE CORPORATION AND MAY NOT BE USED, COPIED OR DISCLOSED TO OTHERS EXCEPT WITH THE AUTHORIZED WRITTEN PERMISSION OF MTE CORPORATION |           |
| CONTAINS <0.1% OF ANY SVHC BY WEIGHT PER REACH REGULATION  |  | CHECKED BY:<br>CB     | DATE<br>11/18/21 | DESCRIPTION<br>DVD T E SERIES 305A KIT<br>208-600V 2-4kHz  |           |
| UNLESS OTHERWISE SPECIFIED DIMENSIONS ARE IN INCHES [MM] TOLERANCES ARE:<br>ANGLES: ± 1 °<br>1 PLACE .X: ± .1 [2.5]<br>2 PLACE .XX: ± .03 [0.76]<br>3 PLACE .XXX: ± .010 [0.254] |  | ME APPROVED BY:<br>DP | DATE<br>11/19/21 | SIZE<br>D  |           |
|  |  | RE APPROVED BY:<br>PY | DATE<br>11/19/21 | DWG No.<br>CD DVTK0305E  |           |
|  |  |                       |                  | SCALE<br>3:4   | REV<br>01 |



N83 W13330 Leon Road  
Menomonee Falls, WI 53051 USA  
800.455-4683  
262.253.8200

|              |                         |              |
|--------------|-------------------------|--------------|
| SIZE<br>D    | DWG No.<br>CD DVTK0305E | REV<br>01    |
| SCALE<br>3:4 | Sheet1                  | SHEET 1 OF 2 |



|  |  |                                   |          |  |  |
|--|--|-----------------------------------|----------|--|--|
| THE COMPONENT, PART OR ASSEMBLY DESCRIBED IN THIS DOCUMENT MUST COMPLY WITH THE EU(EUROPEAN UNION) DIRECTIVE RoHS2   |  | DRAWN BY:                         | DATE     | CONFIDENTIAL AND PROPRIETARY INFORMATION<br>THIS DOCUMENT CONTAINS CONFIDENTIAL AND PROPRIETARY INFORMATION OF MTE CORPORATION AND MAY NOT BE USED, COPIED OR DISCLOSED TO OTHERS EXCEPT WITH THE AUTHORIZED WRITTEN PERMISSION OF MTE CORPORATION |  |
|  |  | JD                                | 08/02/21 |  |  |
| CONTAINS <0.1% OF ANY SVHC BY WEIGHT PER REACH REGULATION  |  | CHECKED BY:                       | DATE     | DESCRIPTION  |  |
| UNLESS OTHERWISE SPECIFIED DIMENSIONS ARE IN INCHES [MM] TOLERANCES ARE:<br><br>ANGLES: ± 1 °<br><br>1 PLACE .X: ± .1 [2.5]<br><br>2 PLACE .XX: ± .03 [0.76]<br><br>3 PLACE .XXX: ± .010 [0.254] |  | CB                                | 11/18/21 |  |  |
|  |  | ME APPROVED BY:                   | DATE     |  |  |
|  |  | DP                                | 11/19/21 |  |  |
|  |  | RE APPROVED BY:                   | DATE     | SIZE<br>D<br>CD DVTK0305E<br>SCALE 3:4   |  |
|  |  | PY                                | 11/19/21 |  |  |
| <div><div>MTE</div><div>POWER QUALITY. SOLVED.</div><div>A STEEL PARTNERS COMPANY</div><div>N83 W13330 Leon Road<br/>Menomonee Falls, WI 53051 USA<br/>800.455-4683<br/>262.263.8200</div></div> |  | DWG No.<br>CD DVTK0305E<br>Sheet2 |          | REV<br>01<br>SHEET 2 OF 2  |  |
|  |  |                                   |          |  |  |