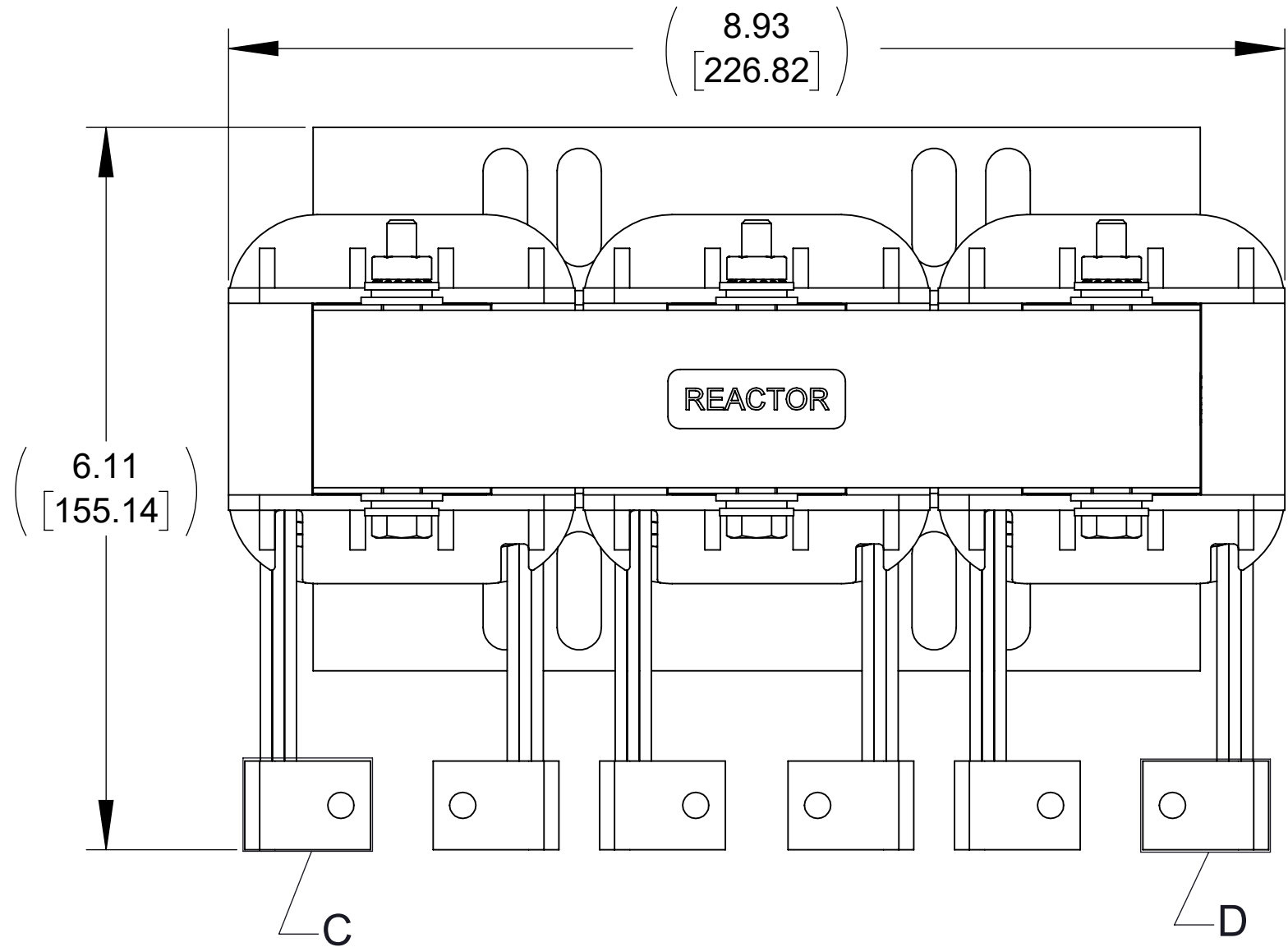
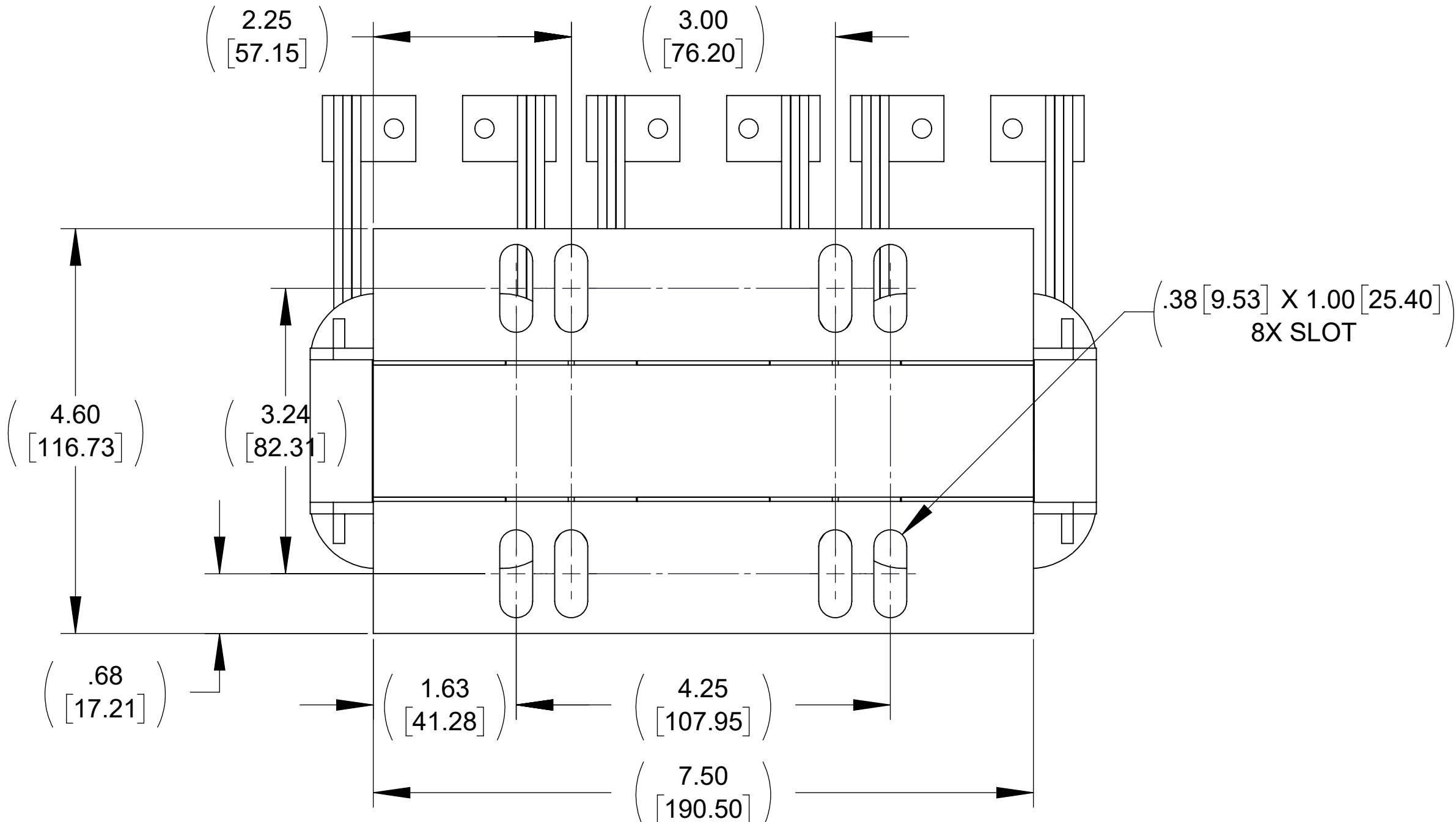


APPROX. WEIGHT
(LBS)
29

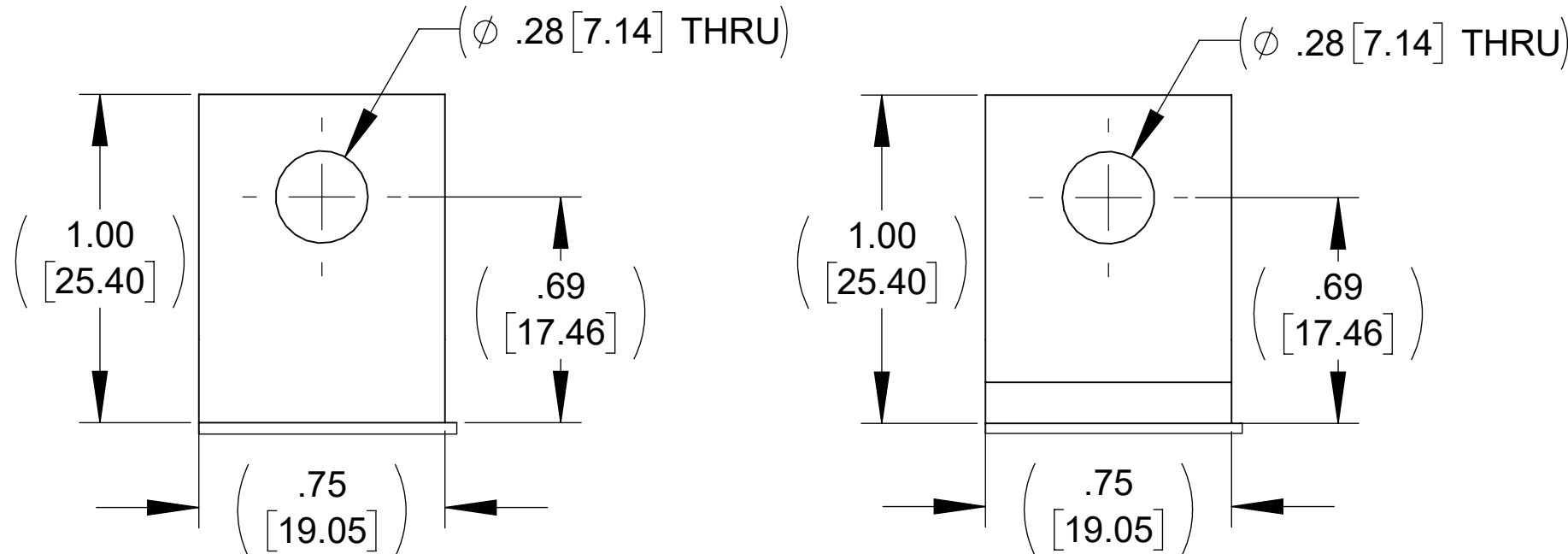
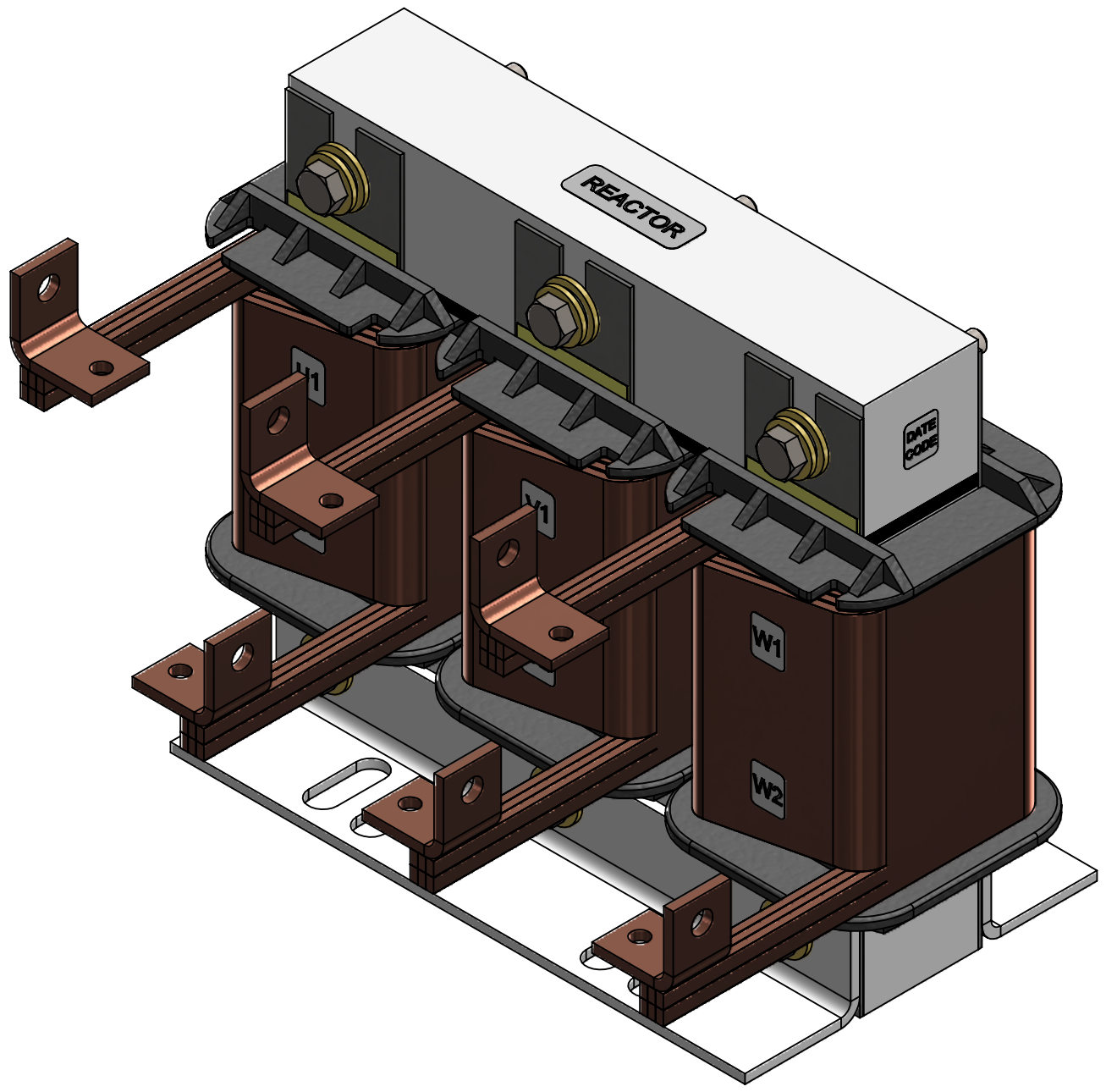
ECO No	DESCRIPTION	REV BY	DATE
M14114	ADDED RESISTOR DETAIL SHEET 2	CB	11/18/21



TOP VIEW

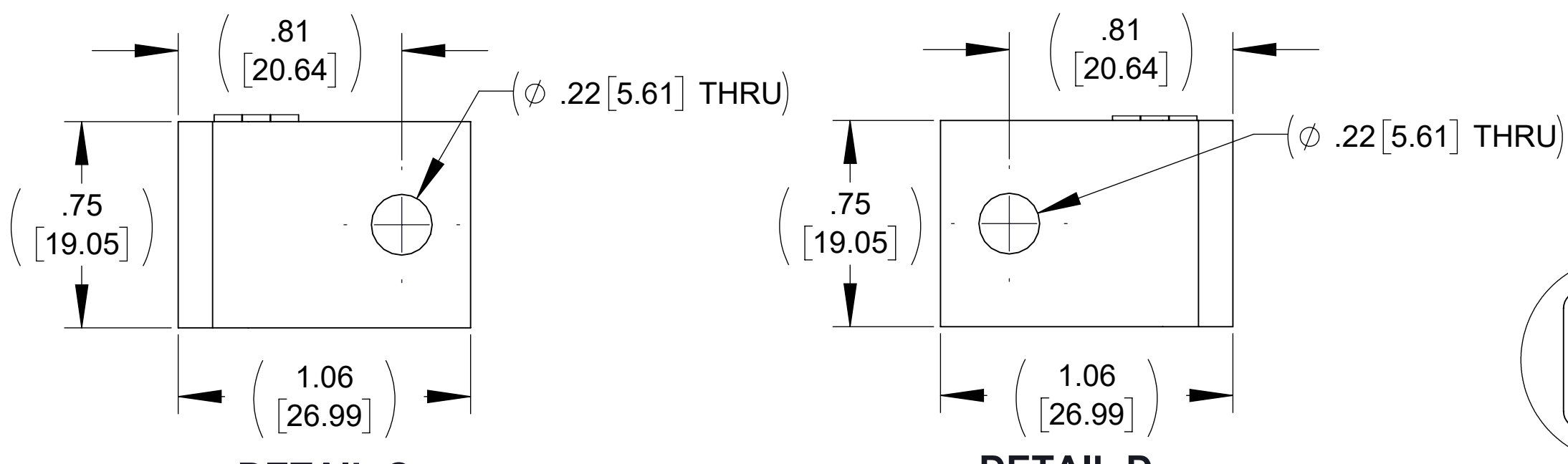


BOTTOM VIEW



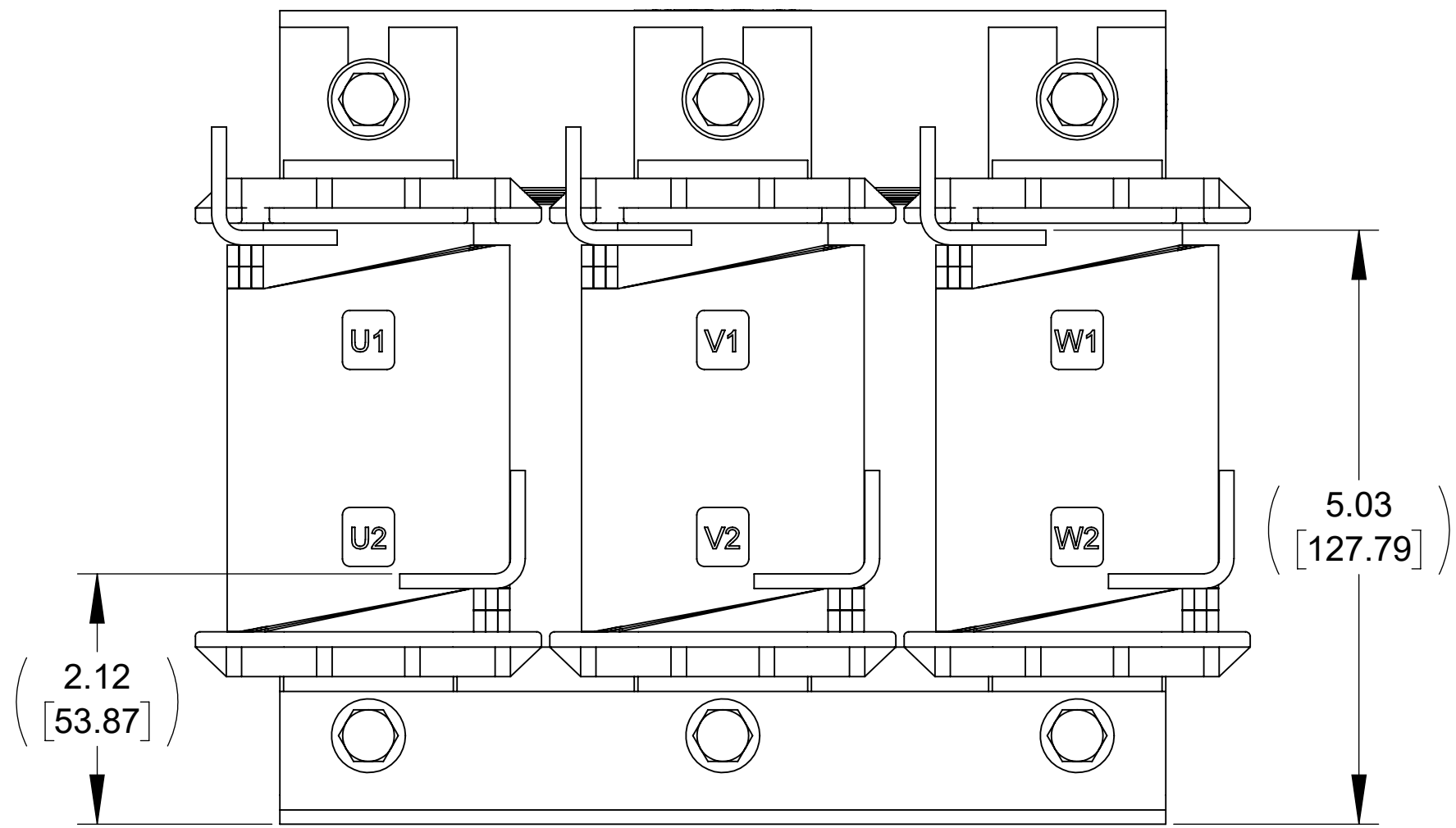
DETAIL A
(3 PLACES)

DETAIL B
(3 PLACES)

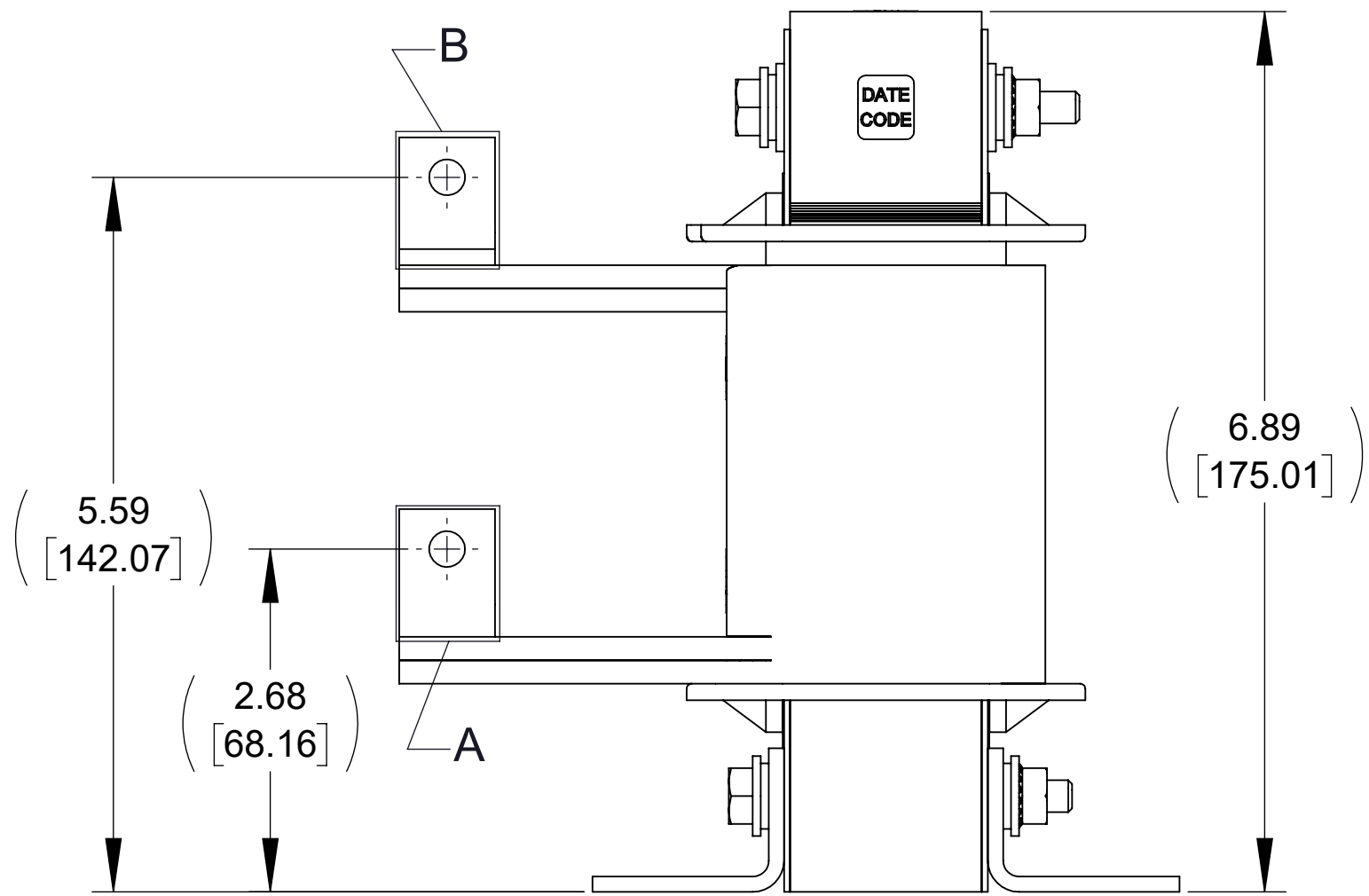


DETAIL C
(3 PLACES)

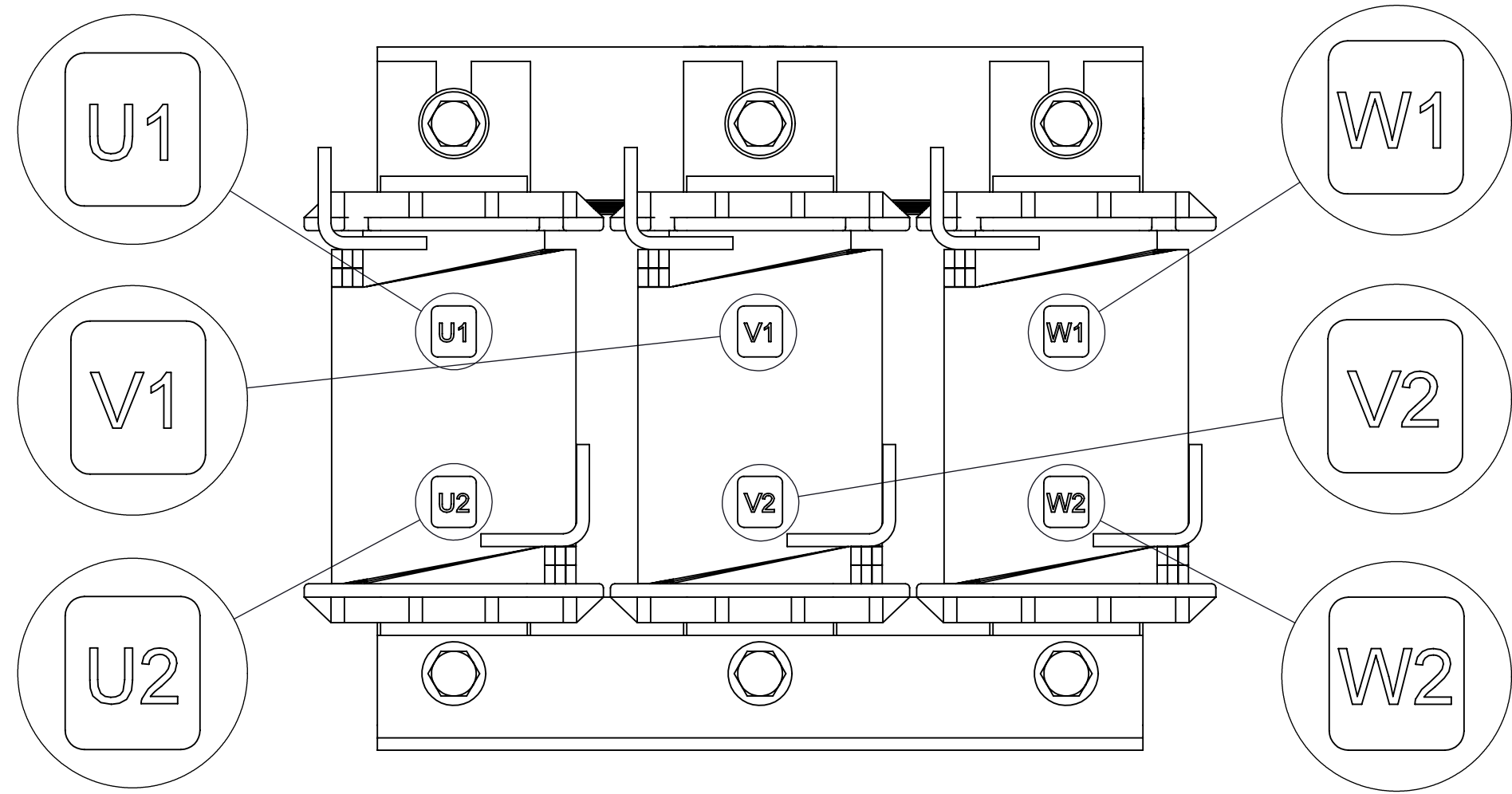
DETAIL D
(3 PLACES)



FRONT VIEW



SIDE VIEW



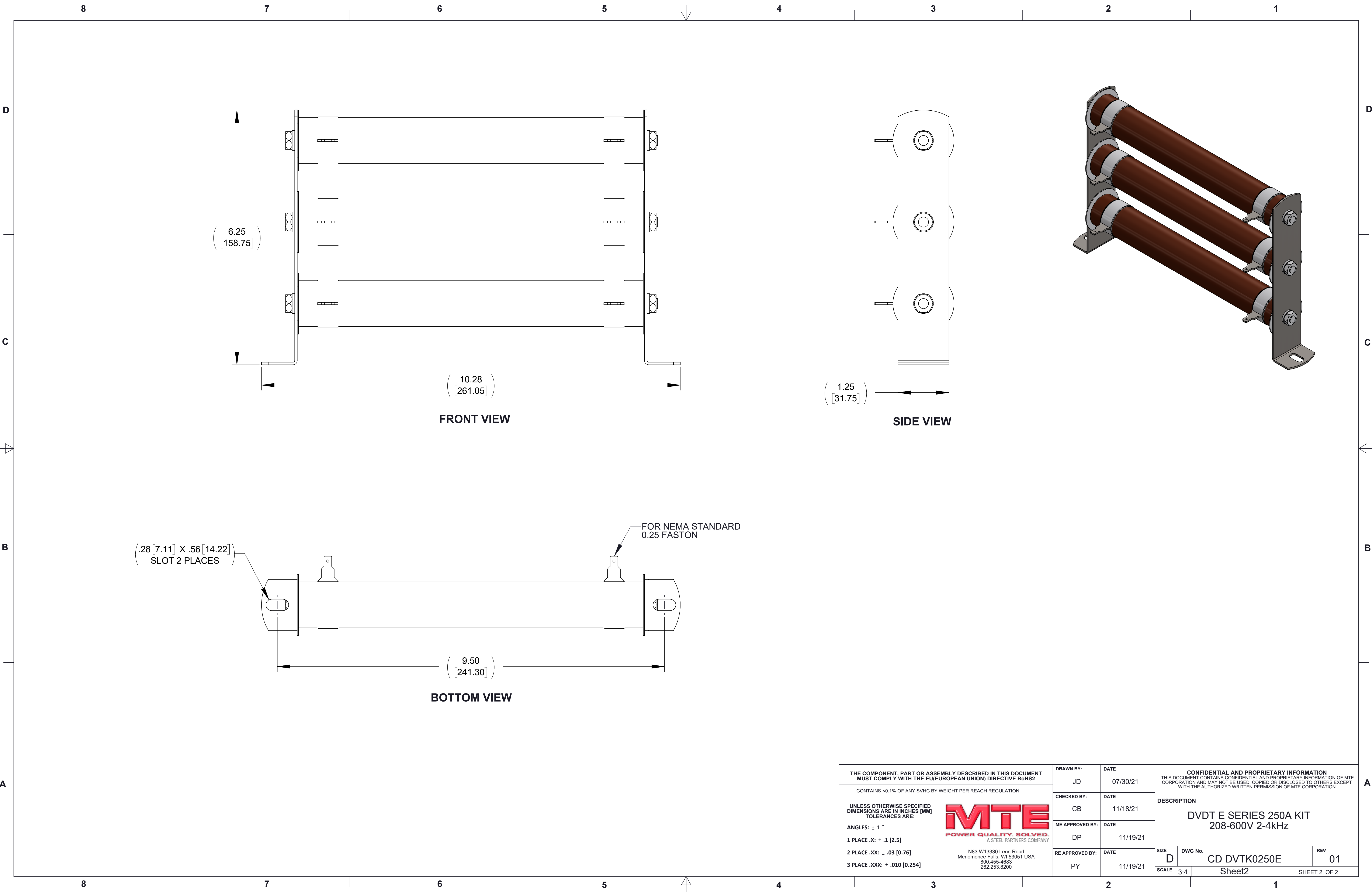
CUSTOMER CONNECTION
DETAIL VIEW


NOTES:

1. REFER TO USER MANUAL FOR COMPLETE INSTALLATION INSTRUCTIONS.
2. FILTER INCLUDES: RESISTOR-071 (QTY. 1).

THE COMPONENT, PART OR ASSEMBLY DESCRIBED IN THIS DOCUMENT MUST COMPLY WITH THE EU(EUROPEAN UNION) DIRECTIVE RoHS2		DRAWN BY: JD	DATE 07/30/21	CONFIDENTIAL AND PROPRIETARY INFORMATION THIS DOCUMENT CONTAINS CONFIDENTIAL AND PROPRIETARY INFORMATION OF MTE CORPORATION AND MAY NOT BE USED, COPIED OR DISCLOSED TO OTHERS EXCEPT WITH THE AUTHORIZED WRITTEN PERMISSION OF MTE CORPORATION	
CONTAINS <0.1% OF ANY SVHC BY WEIGHT PER REACH REGULATION		CHECKED BY: CB	DATE 11/18/21	DESCRIPTION DVD T E SERIES 250A KIT 208-600V 2-4kHz	
UNLESS OTHERWISE SPECIFIED DIMENSIONS ARE IN INCHES [MM] TOLERANCES ARE: ANGLES: ± 1 ° 1 PLACE .X: ± .1 [2.5] 2 PLACE .XX: ± .03 [0.76] 3 PLACE .XXX: ± .010 [0.254]		ME APPROVED BY: DP	DATE 11/19/21		
		RE APPROVED BY: PY	DATE 11/19/21	SIZE D	DWG No. CD DVTK0250E
			SCALE 3:4	Sheet1	REV 01





THE COMPONENT, PART OR ASSEMBLY DESCRIBED IN THIS DOCUMENT MUST COMPLY WITH THE EU(EUROPEAN UNION) DIRECTIVE RoHS2		DRAWN BY: JD		DATE 07/30/21		CONFIDENTIAL AND PROPRIETARY INFORMATION THIS DOCUMENT CONTAINS CONFIDENTIAL AND PROPRIETARY INFORMATION OF MTE CORPORATION AND MAY NOT BE USED, COPIED OR DISCLOSED TO OTHERS EXCEPT WITH THE AUTHORIZED WRITTEN PERMISSION OF MTE CORPORATION			
CONTAINS <0.1% OF ANY SVHC BY WEIGHT PER REACH REGULATION		CHECKED BY: CB		DATE 11/18/21		DESCRIPTION DVDT E SERIES 250A KIT 208-600V 2-4kHz			
<div>UNLESS OTHERWISE SPECIFIED DIMENSIONS ARE IN INCHES [MM] TOLERANCES ARE: ANGLES: ± 1 ° 1 PLACE .X: ± .1 [2.5] 2 PLACE .XX: ± .03 [0.76] 3 PLACE .XXX: ± .010 [0.254]</div>	<div> N83 W13330 Leon Road Menomonee Falls, WI 53051 USA 800.455-4683 262.253.8200</div>		ME APPROVED BY: DATE		DATE				
			DP		11/19/21				
			RE APPROVED BY: DATE		DATE		SIZE	DWG No.	REV
			PY		11/19/21		D	CD DVTK0250E	01
				SCALE 3:4		Sheet2		SHEET 2 OF 2	