

APPROX. WEIGHT  
(LBS)  
249

ECO No	DESCRIPTION	REV BY	DATE
M14083	RELEASED TO PRODUCTION	JD	11/12/21

D

C

B

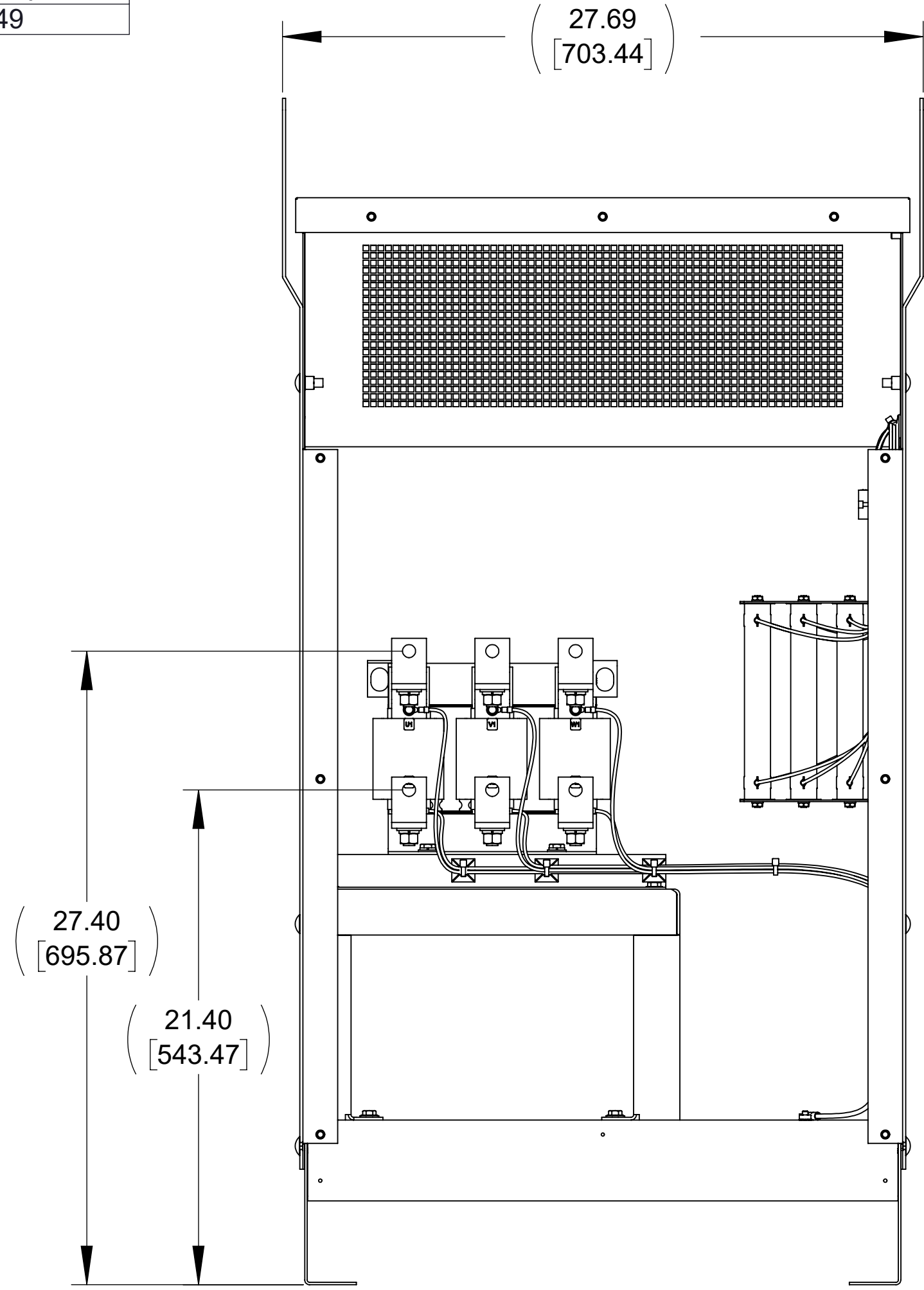
A

D

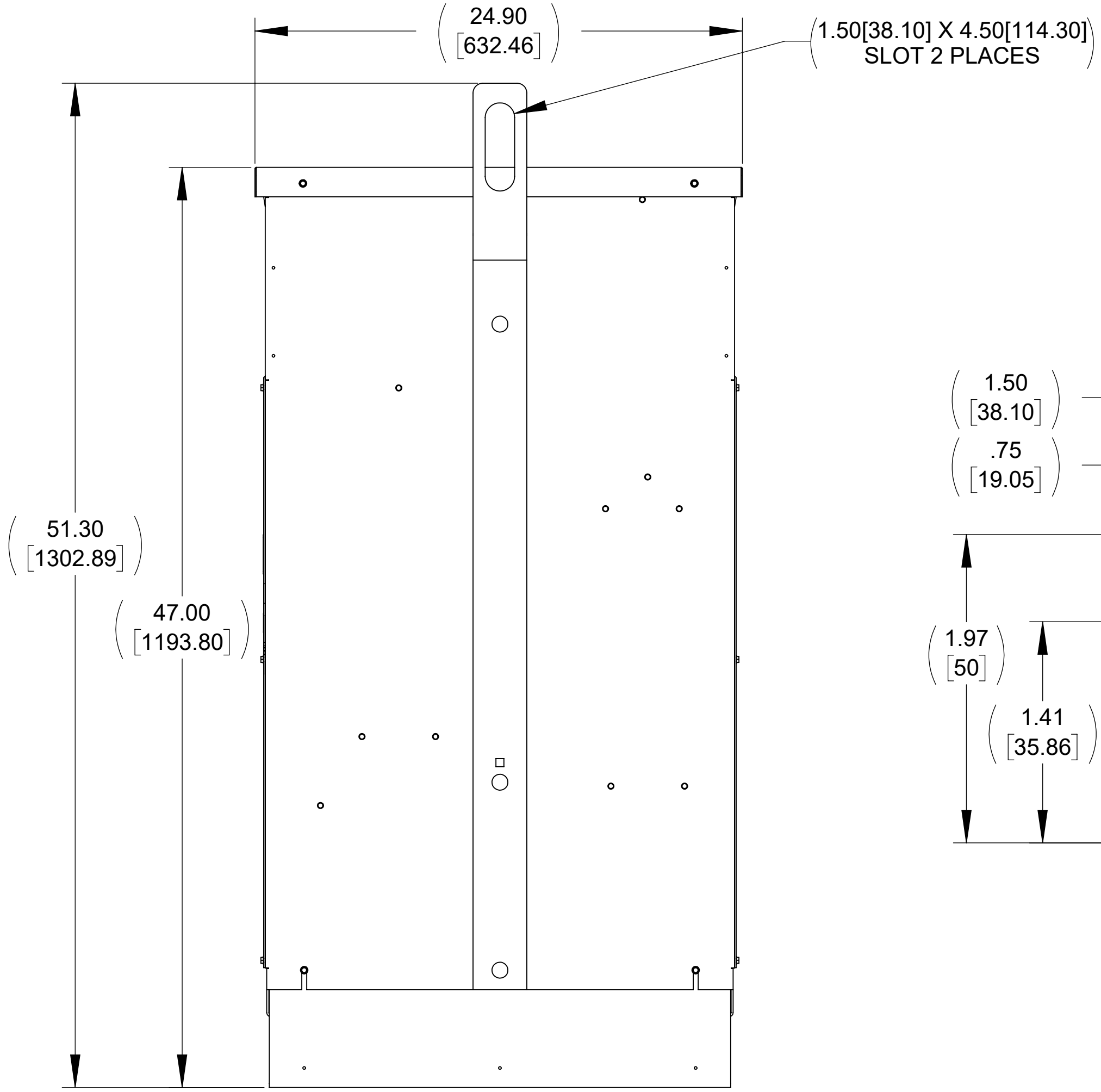
C

B

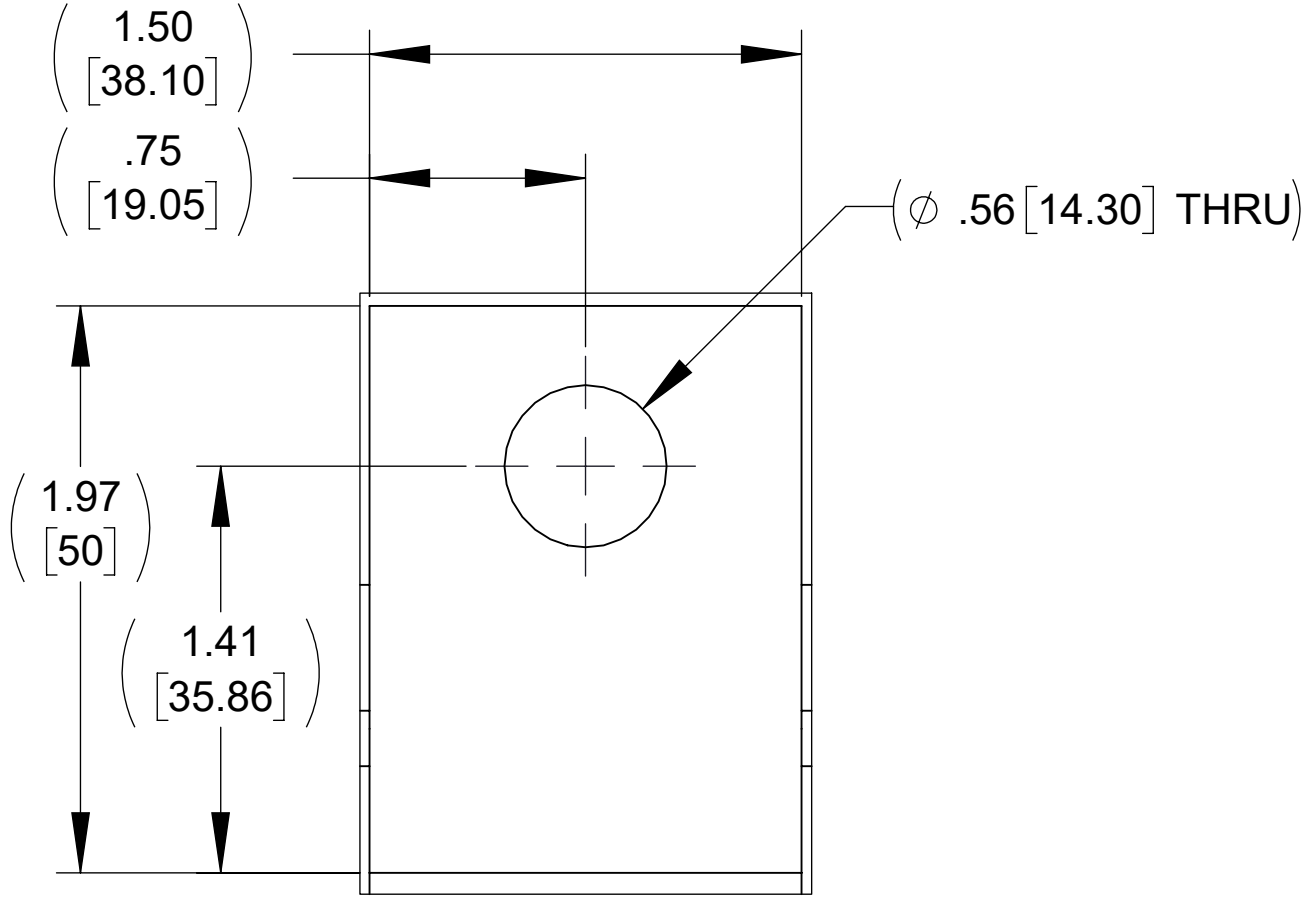
A



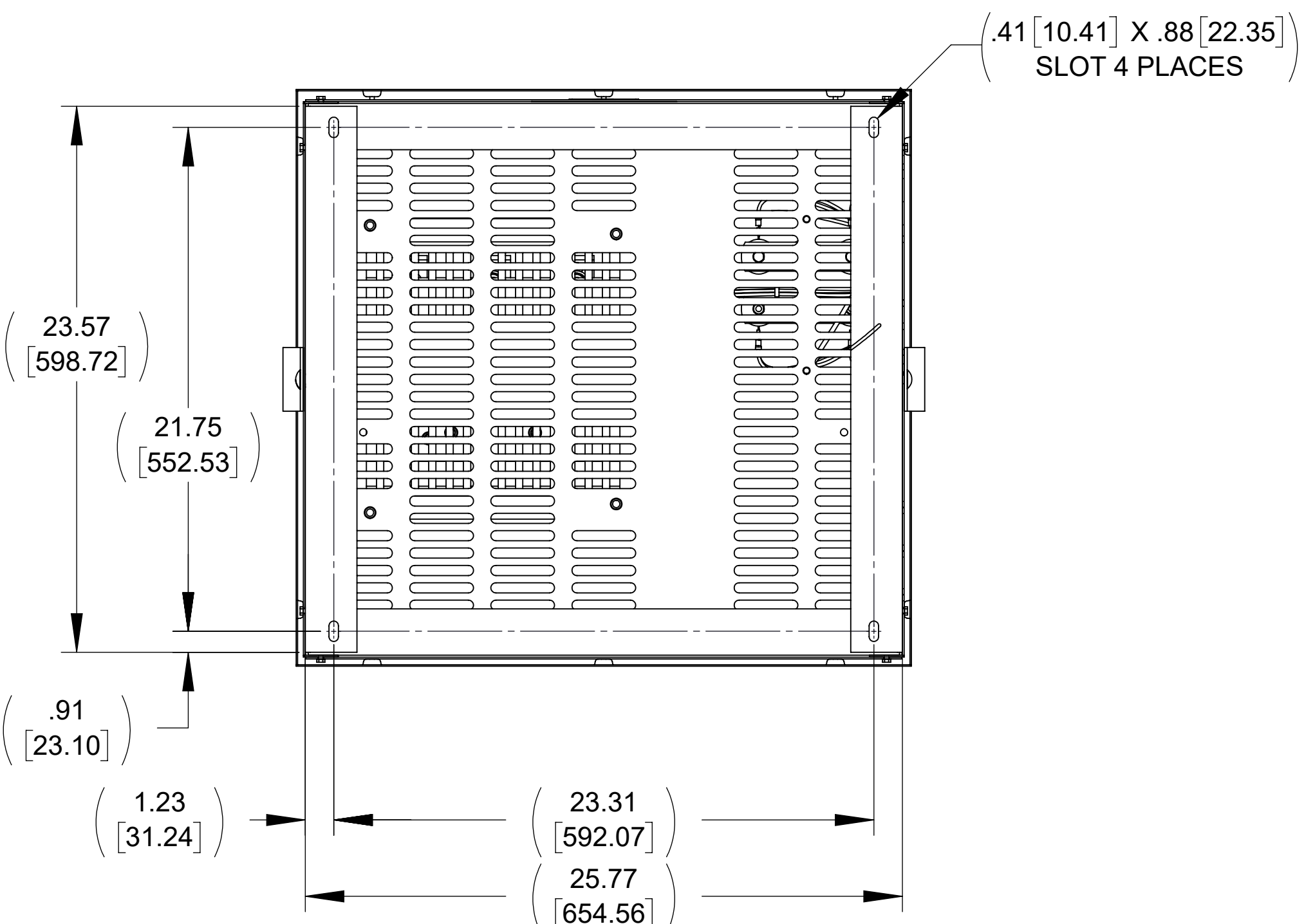
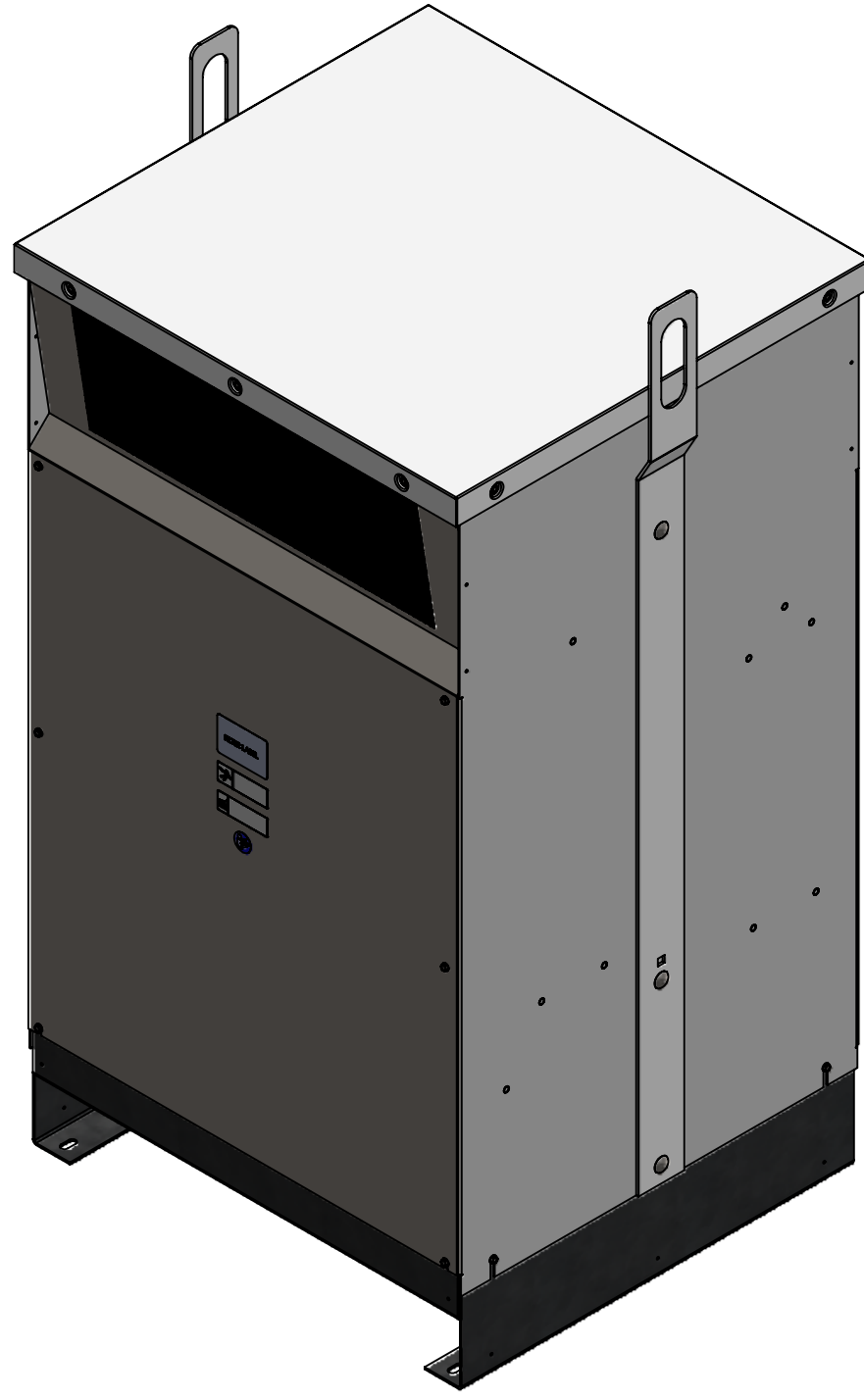
FRONT VIEW  
(PANELS REMOVED)



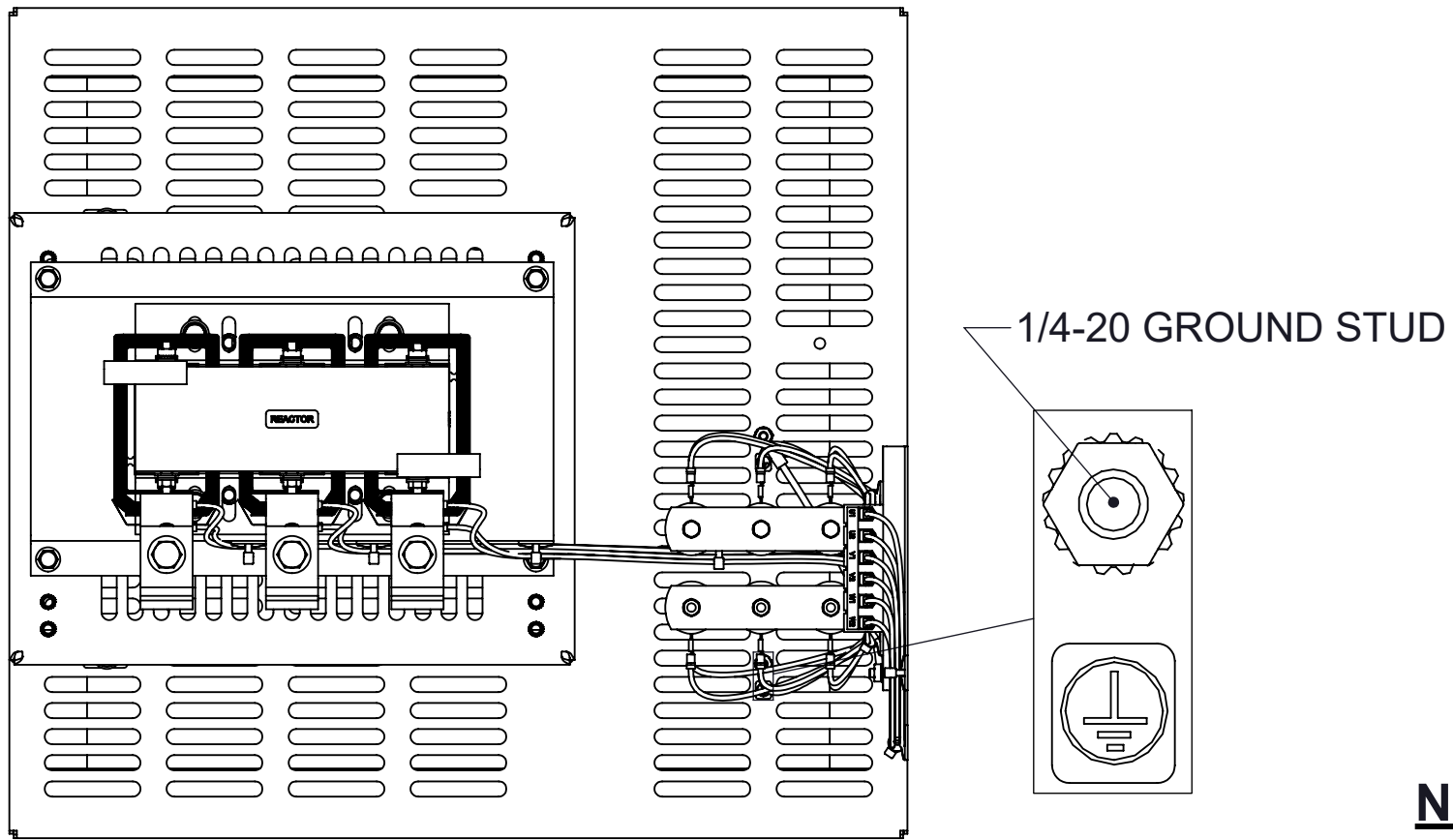
SIDE VIEW



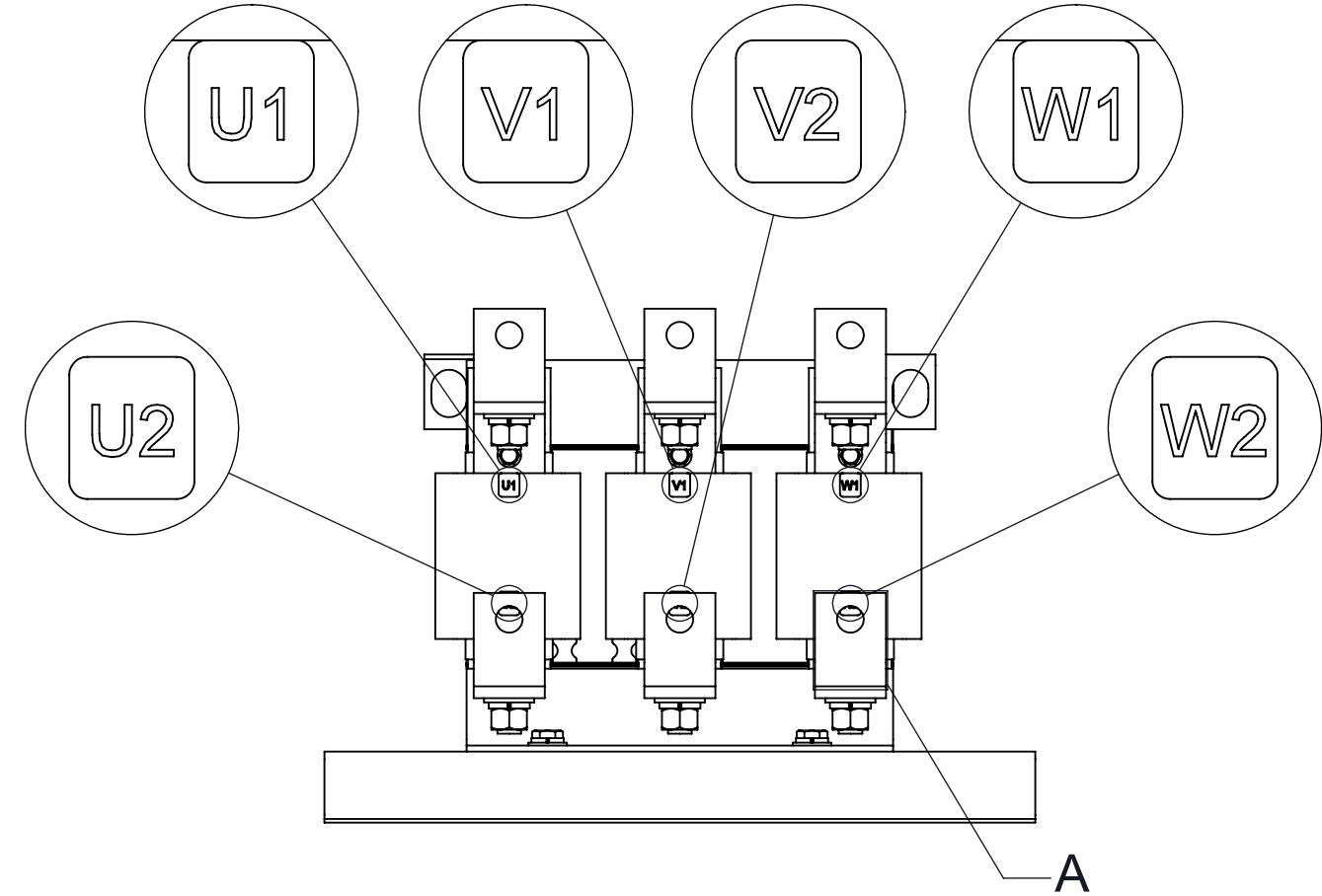
DETAIL A  
(6 PLACES)



BOTTOM VIEW



TOP VIEW  
(PANELS REMOVED)



CUSTOMER CONNECTION  
DETAIL VIEW

NOTES:

1. REFER TO USER MANUAL FOR COMPLETE INSTALLATION INSTRUCTIONS

THE COMPONENT, PART OR ASSEMBLY DESCRIBED IN THIS DOCUMENT MUST COMPLY WITH THE EU(EUROPEAN UNION) DIRECTIVE RoHS2		DRAWN BY: JD	DATE 08/25/21	CONFIDENTIAL AND PROPRIETARY INFORMATION THIS DOCUMENT CONTAINS CONFIDENTIAL AND PROPRIETARY INFORMATION OF MTE CORPORATION AND MAY NOT BE USED, COPIED OR DISCLOSED TO OTHERS EXCEPT WITH THE AUTHORIZED WRITTEN PERMISSION OF MTE CORPORATION	
CONTAINS <0.1% OF ANY SVHC BY WEIGHT PER REACH REGULATION		CHECKED BY: JD	DATE 11/12/21		
UNLESS OTHERWISE SPECIFIED DIMENSIONS ARE IN INCHES [MM] TOLERANCES ARE:  ANGLES: ± 1 °  1 PLACE .X: ± .1 [2.5]  2 PLACE .XX: ± .03 [0.76]  3 PLACE .XXX: ± .010 [0.254]		ME APPROVED BY: DP	DATE 11/12/21	DESCRIPTION  DVRT E SERIES 600A 208-600V 2-4kHz FILTER, NEMA 1/2	
		RE APPROVED BY: PY	DATE 11/15/21		
				SIZE D	DWG No. CD DVTG0600E
				SCALE 3:16	REV 01
				Sheet1	
				SHEET 1 OF 1	

