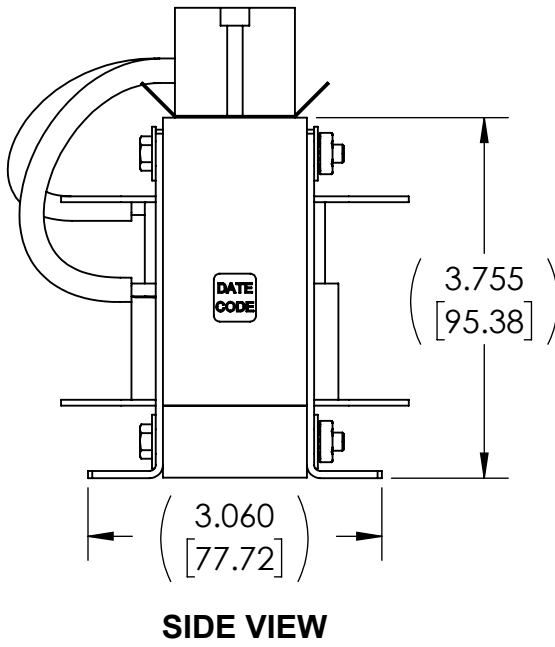
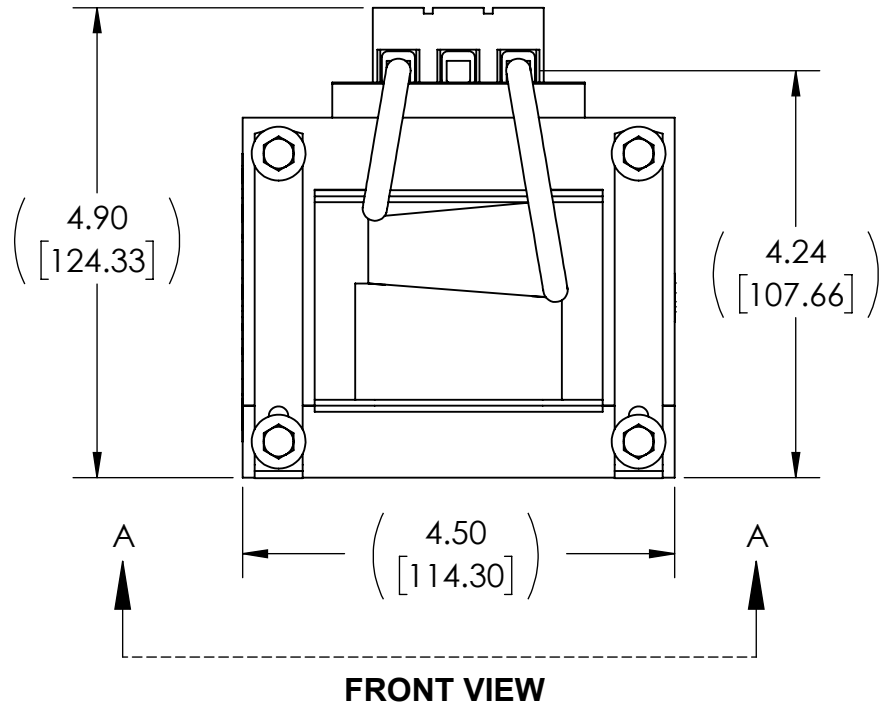
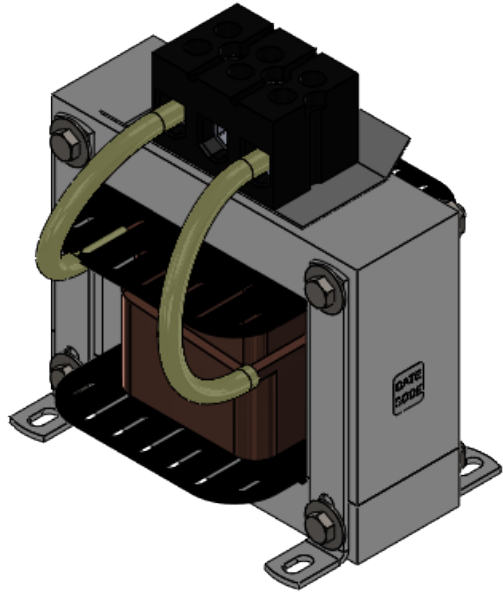
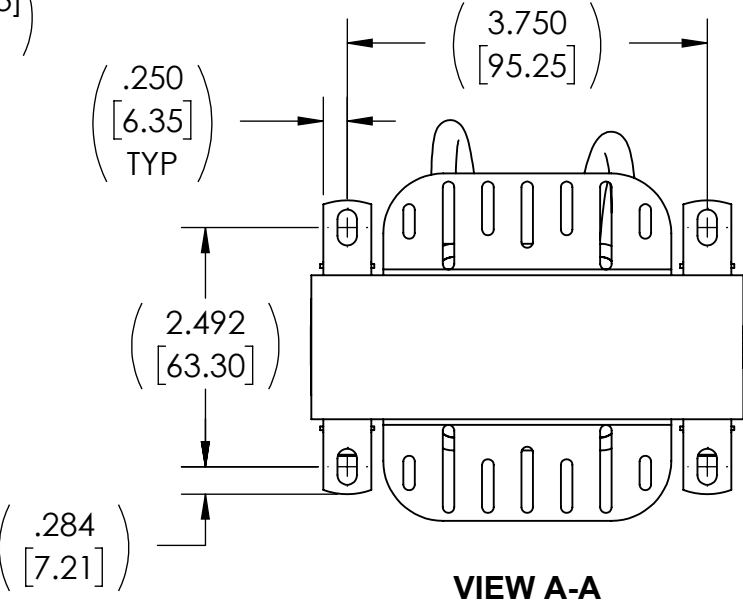
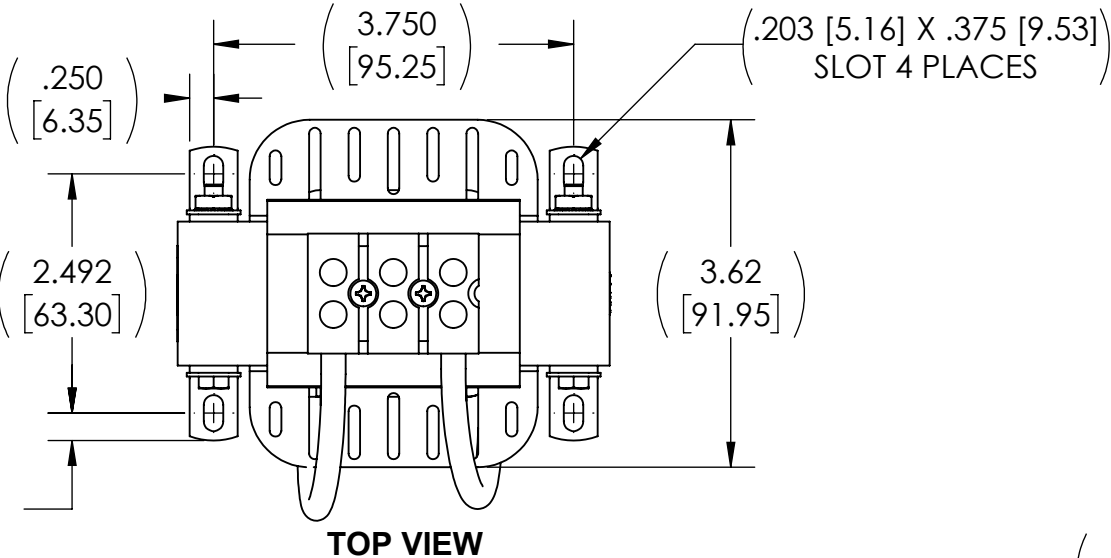



WEIGHT (LBS)	INDUCTANCE	LOSS (WATTS)
8	0.625 mH	18

ECO No	DESCRIPTION	REV BY	DATE
M12797	CHANGE SCREW-5 FOR SCREW-146 AND UPDATE TITLEBLOCK	WF	03/27/20



- NOTES:
1. TERMINAL SCREW TORQUE 16 IN-LBS
 2. WIRE RANGE 18-4 AWG

THE COMPONENT, PART OR ASSEMBLY DESCRIBED IN THIS DOCUMENT MUST COMPLY WITH THE EU(EUROPEAN UNION) DIRECTIVE RoHS2		MATERIAL		CONFIDENTIAL AND PROPRIETARY INFORMATION THIS DOCUMENT CONTAINS CONFIDENTIAL AND PROPRIETARY INFORMATION OF MTE CORPORATION AND MAY NOT BE USED, COPIED OR DISCLOSED TO OTHERS EXCEPT WITH THE AUTHORIZED WRITTEN PERMISSION OF MTE CORPORATION					
CONTAINS <0.1% OF ANY SVHC BY WEIGHT PER REACH REGULATION				DESCRIPTION					
<div>UNLESS OTHERWISE SPECIFIED DIMENSIONS ARE IN INCHES [MM] TOLERANCES ARE: ANGLES: ± 1 ° 1 PLACE .X: ± .1 [2.5] 2 PLACE .XX: ± .03 [0.76] 3 PLACE .XXX: ± .010 [0.254]</div>		<div> POWER QUALITY. SOLVED. N83 W13330 Leon Road Menomonee Falls, WI 53051 USA 800.455-4683 262.253.8200</div>		DRAWN AGK		DATE 6/28/05		DC CHOKE	
		CHECKED WF		DATE 03/27/20					
		APPROVED AK		DATE 03/27/20					
				SIZE B	DWG No. CD DCA005001			REV 05	
				SCALE 1:2				SHEET 1 OF 1	